

ALTON

ROEHAMPTON SW15

# ALTON NEWS

Spring 2024

Issue 37

[www.AltonEstateRegen.co.uk](http://www.AltonEstateRegen.co.uk)

Twitter (X): @AltonMasterplan

[www.wandsworth.gov.uk/Roehampton](http://www.wandsworth.gov.uk/Roehampton)



**ROEHAMPTON COMMUNITY  
BOX TURNS FOUR**

**MEET THE (ROEHAMPTON)  
BEAT**

**WANDSWORTH COST OF  
LIVING COMMISSION  
REPORT PUBLISHED**

**ALTON ARTS HUB  
RELAUNCHED**







# ALTON ESTATE REGENERATION

## Early Improvement Plan - UPDATE

Further to our update in the autumn newsletter, we are delighted to announce that a planning application is to be submitted in the next few weeks for the external space at the Alton Activity Centre and Downshire Field/Bull Green and play space.

Since before Christmas, we have had a huge focus on inclusivity and accessibility of the spaces and are excited to bring forward a package of improvements which can be enjoyed by everyone in the community. Many of you will have had the chance to comment on proposals and, with confidence, we can say that designs have been driven by your feedback, and that of service providers from across the council.

In addition, there has been a specific focus on the landscape around the Bull statue on Downshire Field, so that it will sit more prominently, with some subtle changes to the planting and improvements to the lighting.

We have completed both the Design Review and Pre-application process, so please keep an eye on our websites and Twitter (X) pages where we will confirm when the planning application has been submitted. We will share the submitted designs with you and you will also have the opportunity to comment on the application on the planning portal.

We will update you again in the next edition of Alton News on the expected timeframes for delivery, if the plans are consented.



## MEET THE REGENERATION TEAM!

We'd like you to get to know the Alton Regeneration team. In the last edition we featured our Community Engagement and Cultural Coordinator, Jo Baxter. This time we're shining a spotlight on the newest member of our team, our Regeneration Project Assistant, Ms Jessica Lee!



Jess joined Wandsworth Council in 2012 in the Business Support Team within the Chief Executive Department. She has also worked on the elections over many years and is very well known around Wandsworth Town Hall as someone who is approachable and helpful.

She joined the Alton Regeneration Team in February 2024 as the Project Assistant, so will be out and about on the estate and is looking forward to meeting everyone and being part of all the community events.

She enjoys creativity and getting involved with all kinds of activities, particularly crafting. She is a huge Disney fan and knows most of the words by heart! She also loves various kinds of music (her playlist is very vast!).

Jess is a very bubbly person and enjoys engaging with everyone, so please say "Hi", if you see her around the estate.



# FONTLEY WAY DEVELOPMENT UPDATE

The development known as Gerard House, situated on Fontley Way, provides fourteen new, contemporary homes across four floors.

This includes 12 standard homes which will house residents from the council's housing waiting lists. The remaining two homes are fully wheelchair accessible. The specialist facilities in these properties include adjustable-height worktops and sinks, an automated front entrance door, wet rooms and a through-floor lift.

All households enjoy their own private garden or balcony, and have access to on-site parking, bicycle storage, and a secure communal garden with play equipment for children under five years old living in the block. Each home has been fully decorated with floor coverings and blinds.

Leader of the council, Councillor Simon Hogg, said, "Our Homes for Wandsworth programme will deliver 1000 new homes for council rent - because a decent home is the foundation of a decent life.

The new development is named after one of the sons of the local area - English poet and writer Gerard Manley Hopkins who lived and studied in Manresa House.

"Gerard House gives families waiting for a home a chance to move into a place they can afford. I'd like to wish all these families a wonderful new start and much happiness in their new home."







## News from the Housing Development Team

### HOMES FOR WANDSWORTH PROGRAMME UPDATE

We recently submitted to Planning, proposals to develop land adjacent to Farnborough House, as part of the Homes for Wandsworth programme.

#### Proposals for land adjacent to Farnborough House

In late December 2023, a planning application was submitted to the Local Planning Authority and is currently under consultation, awaiting determination.

The submitted scheme will provide 38 much-needed, new council rent homes within a high-quality sustainable scheme, which will help to meet the needs of our residents now and for generations to come.

Our proposals also include exciting and significant landscape enhancements and improvements, including new play space, a woodland walk, and communal amenities for new and existing residents to enjoy on the estate.

The application is likely to be heard at the Planning Applications Committee on 19 March. The application can be found by using reference number **2023/4762** in the planning application search section: **Planning Application Search (wandsworth.gov.uk)**.



#### Next Steps

Should the scheme receive planning approval in spring 2024, we will then work towards appointing a main works contractor. We will ensure the chosen contractor arranges to meet local residents in person, well in advance of our anticipated start date of summer 2025.

Visit our consultation website to find out more about our plans and to sign-up to our mailing list for project updates: [www.bessboroughroad-farnboroughhouse.co.uk](http://www.bessboroughroad-farnboroughhouse.co.uk).

#### Proposals for land at Bessborough Road

The scheme will provide eight much-needed, specialist homes for adults with learning disabilities within a high-quality sustainable scheme, alongside high-quality new landscaping and a sensory garden, enhancements to the existing play space, and general access improvements around the site for wheelchair and pushchair access.

The planning application was determined at Planning Applications Committee on 24 October 2023 and received unanimous approval from voting members (planning reference number **2023/2779**).

We are currently working on the construction tender with the aim to find and appoint a very experienced and specialist main contractor to eventually undertake the building of the scheme.

**Homes for Wandsworth**



## Affordable Housing Awards Nominees!

The council's Housing Development Team were recently shortlisted for the award of Homebuilder of the Year (Housing Association/Local Authority) at the prestigious Affordable Housing Awards, hosted by Inside Housing Magazine.

The shortlisting recognised the great work the team has been doing across a range of activities over the past year, including the completion of 71 homes at Sphere Walk and 18 homes at Gideon Road, both in Battersea.

The submission also highlighted work supporting Black History Month and the naming of a block of flats at Patmore Street in honour of local community champion and former Ward Councillor, Sally-Ann Ephson.



Sphere Walk, Battersea

## A Well-Deserved Award

We want to wish huge congratulations to Vicky Pigott, who was presented with a prestigious Wandsworth Council Civic Award by the Mayor of Wandsworth at the annual award ceremony, for her selfless volunteering on the Alton estate.

Vicky is a well-known member of the Roehampton community, having served as a community health visitor for over 20 years. Since retiring, Vicky has continued to support the community in a volunteer capacity.



Roehampton Ward Councillor Jenny Yates, Tatiana Dobreva, Vicky Pigott, Jo Baxter from the Regeneration Team.



Vicky Pigott with the Mayor and Deputy Mayor of Wandsworth.

We were also delighted that Tatiana Dobreva received a Mayor's Pin badge in recognition of her swift action which saved the life of a local resident.



# MEANWHILE USE ON THE ALTON ESTATE



## Alton Arts Hub Relaunch

We were thrilled to welcome guests to the relaunch of the newly decorated Alton Arts Hub.

The former shop has been transformed into a vibrant hub for connection, creativity, and collaboration. With fresh coats of paint, inviting décor and new flooring, the space now exudes a welcoming atmosphere for everyone in the community to enjoy.



To celebrate, we hosted an open afternoon on 13 February where attendees learnt how to weave, upcycled empty bottles into decorative lamps and had their photos taken using thermal imaging. The photos will become part of a new collage that is being created by local resident, Symone Planner.

But that's not all – we've also lined up an exciting range of events, classes, workshops, and activities to bring the community together at the Arts Hub. There is something for everyone to engage with and enjoy. We can't wait to welcome you to our improved community space that has "the nicest toilet on the estate"!

If you would like to find out more about hosting a community activity\* in the Arts Hub, please contact [jo.baxter@richmondandwandsworth.gov.uk](mailto:jo.baxter@richmondandwandsworth.gov.uk)



Deacon Kathy, Reverend Claire and Councillor Tiller



Symone Planner

\* The Alton Arts Hub is not available to host personal parties and events or for political or religious activities.

# COMMUNITY ENGAGEMENT QUARTERLY ROUND UP

Over the past few months, the Alton Regeneration team has been involved with a full and varied programme of events and activities on the Alton estate, including:

## MARKING WHITE RIBBON DAY



In November, the SW15 Women's Network, with support from Wandsworth Council, held its third annual torch parade in recognition of 'White Ribbon Day', the global movement to end male violence against women and girls.

The event started with speeches from Fleur Anderson MP, Deputy Mayor Sana Jafri, and local ward councillor Graeme Henderson.

As darkness descended, torches were lit, and banners and placards were held high to signal the start of the parade, which began at the Rainbow Steps at the top of Danebury Avenue.



Attendees marched through the estate, calling for "no more violence against women and girls" to make sure the message reached everyone. Once the parade reached the Citizens Advice Office at Minstead Gardens, attendees heard inspiring speeches from the local community, which reinforced this year's theme of 'changing the story', by encouraging people to call out and challenge sexist and misogynistic attitudes and behaviours when they see or hear them.



Attendees marched through the estate, calling for "no more violence against women and girls" to make sure the message reached everyone. Once the parade reached the Citizens Advice Office at Minstead Gardens, attendees heard

inspiring speeches from the local community, which reinforced this year's theme of 'changing the story', by encouraging people to call out and challenge sexist and misogynistic attitudes and behaviours when they see or hear them.

In the UK, a woman is murdered every three days by her partner or ex-partner. The police receive a call regarding domestic abuse in the home every 30 seconds in the UK. If you are a victim of domestic abuse in Roehampton, the One Stop Shop, which provides support and practical help is open every Wednesday morning from 10am to 12.30pm at the Citizens Advice Office, Picasso Building, Mount Clare, Minstead Gardens, SW15 4EE. In an emergency, call the police on 999.





# COMMUNITY ENGAGEMENT QUARTERLY ROUND UP (CONTINUED)

## LET IT SNOW, LET IT SNOW, LET IT SNOW!

Danebury Avenue was a bustling hive of excitement as we prepared for the annual Christmas tree lighting ceremony.

The frosty air was a perfect accompaniment to our snow machine, which sprinkled 'snow' onto the hair of thrilled children. The atmosphere was filled with the sound of laughter and chatter as local schoolchildren paraded lit lanterns, and families and friends gathered around the towering evergreen, adorned with handmade ornaments and ribbons.

As dusk fell, the Mayor of Wandsworth shared heartfelt words about the spirit of goodwill that the holiday season symbolised.

Amidst the growing excitement, the Mayor initiated the countdown, and as it reached its pinnacle, the crowd joined in unison, chanting the final numbers. With a ceremonious flick of a switch, a collective gasp of wonder swept through the crowd as the tree sparkled to life. The crowd was then entertained by Claire Doran, a local opera singer, who led a festive sing-along of well-known Christmas classics.

## COUNTDOWN TO CHRISTMAS

The guests and staff arrived dressed to impress in their most festive attire.

Think sequined sweaters, Santa hats, and enough Christmas-themed accessories to stock a shop! DJ Decades played classic holiday tunes that made everyone in the Manresa Sheltered Housing Clubroom want to dance their way into the Christmas spirit. Our guests twisted and twirled to the eclectic sounds of

Bing Crosby, Wham, Chris Rea and Wizzard, to name a few.

The guests left our over 55's Christmas party with full bellies and a holiday spring in their step, knowing that they had started the countdown to Christmas in the most enjoyable way possible - with good food, a festive tippie or two, and great company.



## WHEN THE MARKET COMES TO TOWN

With just two weeks to go until the big day, Roehampton residents were invited to step into the enchanting world of our Christmas Market and Santa's grotto, at Portswood Place.

Residents could wander around the vibrant stalls brimming with unique gifts, handcrafted decorations, and festive treats. They could also join in the fun with gingerbread biscuit decorating and Christmas crafting hosted by Chantelle's Community Kitchen, have their faces turned into a snowman or snow queen by face painter extraordinaire, Orleen, or create a lasting memory with a family photo at Estate Art's Nativity scene photo board.

The highlight was, of course, Santa's jolly grotto! Children's eyes lit up as they stepped into the magical home of Santa Claus, and shared their Christmas wishes with the jolly man. Thank you once again to the Putney Rotary Club for providing the wrapped gifts, which brought so much joy to Santa's guests!



## CLASS OF '24

In collaboration with South Thames College, we launched an ESOL (English for Speakers of Other Languages) class at the Alton Arts Hub, in the new year.

Students were keen to embark on a thrilling linguistic adventure that could broaden their horizons and open up a world of opportunities.

We welcomed students who between them spoke 11 different languages including Syrian, Ukrainian and Urdu. Each one brought a unique perspective to the class, creating a vibrant community where everyone was valued and respected, and where learning was a collaborative, joyous experience and a fun adventure.

The students unraveled the idiosyncrasies of English grammar, vocabulary, and pronunciation with the guidance of the teachers. For instance, a picture taken with a camera is a photo but the art of taking photos is photography, not pronounced photo - graphy! After 9 weeks the students had newfound language skills that will help them unlock doors to new opportunities and enable them to connect with people from all walks of life with confidence.

Missed this course? Don't worry - following the success of the Class of '24, we will be running another from April to July! Keep an eye on our community noticeboards, websites and Twitter for more information.



# COMMUNITY ENGAGEMENT QUARTERLY ROUND UP (CONTINUED)



## A WOMEN'S WANDER

We joined our friends at Community Bluescapes (see Issue 36 of Alton News) to celebrate World Wetlands Day, with a 'Women Only Wetland Wander' on 2 February.

A group of 41 women, including many members of the SW15 Women's Network\*, and a couple of babies, set out on a leisurely walk from the Alton Arts Hub in Portswood Place to Beverley Brook, which cuts through Richmond Park.

The group paused now and then to admire the beauty and importance of the wetland ecosystems and the verdant surroundings.

The rich variety of birdlife that flourishes in the wetlands served as a reminder of the important role the brook and wetlands provide for sustenance and shelter. Ducks waddled along the water's edge, their quacking adding a delightful soundtrack to the scenery.

Conversations among the group centred on the importance of wetlands in maintaining ecological balance, regulating water flow, and providing crucial habitat for diverse flora and fauna.

Back at the Arts Hub, the group enjoyed a delicious home cooked lunch, provided by Chantelle's Community Kitchen, who were launching their new Brunch Cafe a couple of doors down that same day. We were all grateful to sit down to a warm meal!

\*The SW15 Women's Network meets every Wednesday between 10.30am and 12.30pm for coffee and crafting at the Alton Activity Centre, Ellisfield Drive, SW15 4DR, and holds a monthly online meeting. For further information contact [vicky.marie.pigott@gmail.com](mailto:vicky.marie.pigott@gmail.com)

## LOVE IS AL-TON AROUND



We welcomed over 60 children to our half term Valentine's Day crafting event, co-hosted with our friends at Roehampton Library.

Heartfelt cards were created for parents and best friends, inspiring messages were written for the 'Love Wall' located outside the library, and heart-shaped biscuits were decorated with colourful icing (most were eaten before the icing had time to dry!).

A celebration of affection, creativity, and delicious fun that left everyone feeling that love was truly al-ton around.



# UPCOMING EVENTS AND ACTIVITIES

Keep an eye on our community noticeboards, websites and Twitter page for information on upcoming events and activities, including:



### EGG-TASTIC EVENT

HOSTED BY THE ALTON REGENERATION TEAM & ROEHAMPTON LIBRARY

In Roehampton Library  
(2 Danebury Avenue, SW15 4HD)

WEDNESDAY 3RD APRIL 2024

JOIN US FOR CRAFTING & A SCAVENGER HUNT

3.00 - 4.00 PM UNDER 5'S  
4.00 - 5.00 PM OVER 5'S

IF YOU HAVE CHILDREN IN BOTH AGE GROUPS PLEASE ATTEND THE 3.00 - 4.00 PM SESSION

New From Chantelle's Community Kitchen

### Brunch Cafe

Join us every Friday between 11.00 am - 1.00 pm for a free\* light lunch at Portswood Space (4 Portswood Place, SW15 4ED)

\*Donations appreciated if you feel able

### Enjoy a hearty, cooked meal on us!

Every Saturday at 5pm

Roehampton Methodist Church  
Minstead Gardens  
Roehampton  
SW15 4EB

No need to book

[foodcycle.org.uk](http://foodcycle.org.uk) | 02077 292775  
Registered Charity Number 1134423

### METAL DETECTOR CLUB

Tuesday 9th April

Meet 2.30pm at Alton Arts Hub (6 Portswood Place, SW15 4ED)

Metal detectors and spades will be provided

Followed by refreshments

### Cash for 'Junk'

Every month, between March and November, Friends of Queen Mary's Hospital run a car boot sale in the hospital car park, SW15 5PN.

The cost is £5 for a blanket, £10 for a car and £15 for a van. No need to book. Just turn up and find a spot. Sale runs from 7.30am to 11.30am.

The dates for this year are 10 March, 14 April, 12 May, 9 June, 14 July, 11 August, 8 September, 13 October and 10 November.

For more information visit [www.friendsqmh.com/](http://www.friendsqmh.com/) car-boot-sale

### Over 60's Party

### GOING BACK TO MY YOUTH

Friday 26th April 2024 - 5pm to 8pm  
Manresa Clubroom, Fontley Way, SW15 4LY

DJ DECADES  
Plays music from 50's, 60's, 70's & 80's

Bring your own drinks  
Free Hot Dogs & Nibbles





Roehampton Gate Café

## THIS APRIL, COME AND FIND OUT ABOUT ROEHAMPTON RESTORED

The Royal Parks charity will be holding engagement days on the following three dates, to share plans for the new café at Roehampton Gate. We encourage local residents, communities and park visitors to come along, have a look at the exciting plans for the space, ask any questions and give feedback.



- 1-4pm, Thursday 4 April, Roehampton Café
- 10am-1pm, Saturday 6 April, Roehampton Café
- 11am-2pm, Friday 12 April, Pen Ponds

This will be a great opportunity for people to speak directly with members of the project team, including the Richmond Park team and The Royal Parks landscape team. There will also be the chance to join an email list to receive regular updates about the project.

The current facilities at Roehampton Gate are temporary structures put in place almost 20 years ago after a fire destroyed the original buildings. These facilities do not offer the capacity or modern amenities required to serve park visitors.

Roehampton Restored will regenerate this part of the park, by replacing the current

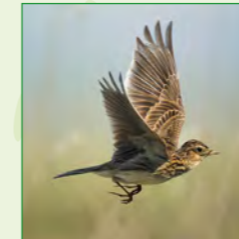
café with a new BREEAM-certified excellent café. BREEAM (Building Research Establishment Environmental Assessment Method) is a long-standing method of assessing, rating, and certifying the sustainability of buildings. A greater amount of indoor and outdoor seating will be provided, as well as more public toilets and catering storage; all of which will futureproof the facilities for visitors for many years to come. Vitally, the new buildings will sit within an improved landscape, designed to enhance the environment, and give biodiversity a boost.

We look forward to seeing you there!

## HELP US PROTECT RICHMOND PARK'S BREEDING SKYLARKS



The skylark is a small, streaked, brown bird, larger than a sparrow but smaller than a starling. These ground-nesting birds breed from March to September and advertise their territories by performing a spectacular song-flight.



Due to pressure from increasing visitor numbers, the skylark population within Richmond Park has sadly declined rapidly. To reduce the impact on ground-nesting birds such as the skylark, we require all dogs to be kept on a short lead and all visitors to stay on certain paths at all times when walking through the following areas:

- Lawn Field (by Pen Ponds)
- Crown Field (between the sports pitches and Bone Copse)
- The Bog (between Bog Gate and Sheen Gate)



Richmond Park is an important Site of Special Scientific Interest (SSSI) that supports a diverse range of habitats and a rich array of wildlife, including the skylark, which provides visitors with a unique opportunity to experience wildlife in London. These measures don't just help the skylark, but also other important wildlife species and, as a result, the increased level of protection will have a positive impact. Thank you for your help in protecting this important environment and the species that inhabit it.

## Free minibus service is returning to Richmond Park

The minibus will return to Richmond Park in April 2024, giving all park visitors better access to enjoy the natural environment of this large National Nature Reserve.

It will run between all the Richmond Park car parks, Ladderstile Gate, Richmond Gate, Pembroke Lodge, and Isabella Plantation.

The minibus is free, with a ramp and steps to aid access. Wheelchair users wishing to use the



service should contact [jmeays@royalparks.org.uk](mailto:jmeays@royalparks.org.uk) or [volunteering@royalparks.org.uk](mailto:volunteering@royalparks.org.uk).

For more information about when the service will begin and timetables, please keep an eye on our website: [www.royalparks.org.uk/visit/parks/richmond-park/free-minibus-service-richmond-park](http://www.royalparks.org.uk/visit/parks/richmond-park/free-minibus-service-richmond-park)



Visit us and get 15% off!

Special Spring Offer for  
Alton News Readers in  
SW15 3,4 & 5 Postcodes



Located at the Roehampton Gate car park, Parkcycle offers a wide range of high specification TREK mountain bikes to enable you to enjoy a unique day out riding the safe and traffic-free trails of Richmond Park.



King Henry's Mound Telescope



Protected view of St Paul's Cathedral

**All bikes hired are supplied with a helmet for your safety - free of charge!**

Parents are encouraged to bring their children as we have various child accessories for the younger ones, such as baby seats, children's trailers and tag-along's. There are also a full range of children-specific bikes in various sizes to choose from.

We have information about the park's attractions on our website [www.parkcycle.co.uk/route-planning/park-attractions](http://www.parkcycle.co.uk/route-planning/park-attractions).

To help plan your route, we also have a range of route options to take in the main sites of the park - all of which can be downloaded onto your phone from our website.

You may not know, there is a free telescope at the highest point in the park - on King Henry's mound - through which you can see St Paul's Cathedral along a protected sightline! According to the story from which the mound now gets its name, King Henry VIII climbed to the top of the high hill in 1536 to watch for a signal from the Tower of London that Anne Boleyn had lost her head, and that he was free to remarry. Regardless of whether King Henry ever stood at the summit of the mound, the view is a stunning "must see".

We are open on weekends all year round, and on weekdays too from April until the end of September. During the winter period our opening times are limited, so we recommend that you check the website and twitter [X] [@Parkcycle\\_RP](https://twitter.com/Parkcycle_RP).

Also, it is worth noting that prices vary by season, with special off-peak rates up to the end of April.

**Anyone living in the SW15 3, 4 & 5 areas can enjoy 15% off our normal prices.**

To claim the discount all you need to do is mention you are a resident and an *Alton News* reader when making the advance booking, and then bring proof of address to claim when hiring.

If you want to just turn up without an advance booking we will give you a 10% discount (with proof of address).

**The special offer for residents will run until the end of April (excluding Easter - 29th March to 1st April).**

You can make a reservation now on our website [www.parkcycle.co.uk](http://www.parkcycle.co.uk) - make sure to mention you want to claim the resident discount on your booking request!

# It's 'your time to move' with Regenerate



Roehampton-born Regenerate have expanded their offering at the Roehampton Recreation Centre, and you are invited to come and get involved too!

'Your time to move' multisport sessions now take place on Tuesday and Friday evenings, led by our youth worker and sports coach, Louis. These sessions are a welcoming and open space for any young people aged 10-18 to come down and get involved in different sports activities, from football, basketball, dodgeball, and everything in between! We also welcome your feedback about which sports you would like to play; this helps us shape the programme.



During school holidays, we offer trips out such as laser tag, paintballing, climbing and Chelsea stadium tours. All our trips are free but we encourage you to attend at least two multisport sessions before signing up.

At Regenerate, we believe that doing sports is not only a fun way to socialise, but it also helps with building key skills such as confidence, teamwork and respect.

All of the young people we asked said they get on better with other people since attending, and one young person said it has helped them massively with their self-management...

*"When I'm angry, I know I have to calm myself down, so I breathe in and out and use my words. I know to not make fun of others and not be rude to them."*

## Current programme:

**Tuesdays:** 4 - 6pm, Multisport, all ages

**Fridays:** 4 - 5pm, Multisport for year 6 - 8  
5 - 6pm, Multisport for year 9 - 12

## Where to find us:

**Roehampton Sports and Fitness Centre**  
Laverstoke Gardens, SW15 4JB

No pre-sign up needed, just turn up in comfortable clothes you can move in.







# The Council's Cleaner Borough Plan

We are working hard to improve the rubbish and recycling service you receive. Our Cleaner Borough Plan - delivered through a four-year waste contract - includes guaranteeing weekly rubbish collections, collection vehicles that run on Hydrotreated Vegetable Oil with improved in-cab technology, new banks to recycle electrical items, and the introduction of food waste collection by the end of 2024.

In 2023, we knocked on doors of all council managed properties to get your views on rubbish and recycling services, as well as handing out information to help you recycle the right things. This work will help shape the service you receive, so that we focus on your top priorities and concerns when it comes to rubbish, recycling and fly-tipping.



New recycling bins are being installed on the Alton estate

## Improved services on the Alton estate

We're also making improvements to your estate. We are replacing all damaged recycling bins with new ones, as well as looking at where we may need more bins.

We are encouraging all residents to do the right thing with their rubbish and recycling, based on feedback we have received.

Here are some of the things you can do to help if you use a communal recycling bin; otherwise please visit [wandsworth.gov.uk/recycling](http://wandsworth.gov.uk/recycling) for more information about household recycling:

Please fold down and flatten cardboard boxes before you put them in the recycling bins. If you don't, the bins get clogged up and there's not enough space for the recycling.

And make sure you put cardboard into the bin, not beside it.

Nappies don't go in the recycling bins, they go in the household rubbish bins, the black lidded ones.

No black bags in the recycling bins. You can put your recycling in loose, or in any clear, transparent bag.

## Recycle Right

Helping you do the right thing with your recycling



# WANDSWORTH COST OF LIVING COMMISSION



In November 2022, the council supported the establishment of an independent commission to look at the underlying causes of the cost-of-living crisis, and to make recommendations about what the council and its partners could do to address these.

The Commission was independent of the council, and made up of 15 commissioners, all of whom were subject matter experts with a local connection to Wandsworth.

They brought a range of expertise and perspectives to the Commission's work, from a mix of backgrounds including academia, business representation, the public sector, and local leaders.

Over the course of the year, the Commission considered how five themes contributed to cost-of-living pressures: Housing, Food, Energy, Transport, and cross-cutting system-wide issues. They heard from local residents, businesses and community organisations about their experiences; holding six-evidence gathering sessions across the borough, including one in Roehampton in the Alton Community Centre in February 2023, and conducting a borough-wide survey open to all residents.

The Commission has published its final report, in which it makes 35 recommendations directed to the council, the wider Wandsworth system, and regional & national government about actions it believes would help mitigate the cost-of-living crisis for residents. This includes specific recommendations relating to delivering joined-up action for Roehampton, recognising the particular impact of the cost of living on the area due to its specific characteristics.



Evidence gathering session at Alton Community Centre

The council has now considered the recommendations of the report and has outlined how it intends to take these forward, including those for the Alton Estate and wider Roehampton area. These plans were reported to Finance Committee on 27 February and work has already begun to deliver these.



To read more about the Commission and its final report, visit [wandsworth.gov.uk/cost-of-living-commission](http://wandsworth.gov.uk/cost-of-living-commission).





# MEET THE BEAT: Roehampton Safer Neighbourhood Team

**I wonder?** It's a question we all ponder from time to time. Maybe you've wondered about crime where you live and what the police are doing about it. This article, written by one of your local Bobbies, will hopefully give you a clearer idea about what your Roehampton police officers get up to and contribute in the local and London-wide effort against crime.



## **I wonder: who are you?**

We are Roehampton Safer Neighbourhood Team - SNT for short. We are a dedicated policing team who cover Roehampton. We are made up of one Sergeant, two Police Constables (PCs) and one Police Community Support Officer (PCSO), and are based in Putney.

## **I wonder: how do you operate?**

We are on our beat at varying times throughout the month. So we can get various tasks done depending on the time of day. For instance, during the daytime, we can progress our investigations as a part of a normal workday or conduct engagement events that people can drop in to. We also work later shifts, sometimes until midnight, which gives us the chance to tackle problems more prevalent in the evenings, like anti-social behaviour (ASB).



## **I wonder: what is it you do to fight crime?**

We have a lot of flexibility when it comes to tackling crime.

A big part of what we do is hands-on, old-fashioned enforcement. This means making use of our powers against offenders who commit crime or ASB. This can mean arresting wanted offenders, conducting stop and searches, issuing summonses for traffic offences, or handing out warnings and fines. We also have powers to tackle ASB with community protection warnings, closure orders and search warrants. These powers often require a lot of work behind the scenes, and we've listed two examples below.

**Warrants** - We execute search warrants at addresses where intelligence and analysis suggests illegal activity, such as drug dealing or storing stolen goods. In November, we assisted the Department for Work and Pensions by searching an address in Roehampton and arresting 2 suspects linked to a £5million fraud.

**Closure Orders** - Joint working with the council is an effective way of tackling repeat issues in an area. These orders are obtained from a court to close down an address where we have recurring offending. We recently managed to evict a trouble tenant, which has resulted in a noticeable decrease in drug-related ASB at that block.

The other half of our work is community engagement. We run regular 'Coffee with a Copper' mornings with councillors, so residents can drop in and get crime prevention advice, report crime or ASB to us, or just have a chat. We also regularly hold crime prevention events, such as Bike Marking, where you can have your bike registered for free on the national BikeRegister system. This really helps prevent theft, but also helps us to get your property back to you if it is stolen.



PC Quail, PCSO Russell, PC Gavin (from left to right)

## **I wonder: how can I get involved?**

There are a number of ways you can keep tabs on what we get up to. You can follow us on Twitter (X) to keep up to date with our local activity and events. You can also see our priorities and upcoming events on the Met's Website. We also regularly send out crime prevention information and information about our local events to our emailing list; to sign up just email [roehampton@met.police.uk](mailto:roehampton@met.police.uk) with your name, number and address (optional) - don't worry, we won't bombard you with emails!

We hold a Ward Panel meeting every quarter at the Alton Arts Hub in Portswood Place. This is to keep residents informed of what we've been up to, discuss our local priorities, and hear about what you would like to see from our team going forward. These are attended by councillors, the community safety team, and the council's dog team who can help with all dog-related matters.

You can also become a volunteer, helping with local events, leaflet drops, reassurance patrols and weapon sweeps, to name a few. Find out more by googling: 'Met Police Community Based Volunteers'.

## **I wonder: how can I contact you?**

You can find us on the Met Website:  
[www.met.police.uk/area/your-area/met/wandsworth/roehampton](http://www.met.police.uk/area/your-area/met/wandsworth/roehampton)

Follow us on Twitter (X):  
[Twitter.com/MPSRoehampton](https://twitter.com/MPSRoehampton)

Email us on (Not for crime reporting, not monitored 24/7): [Roehampton@met.police.uk](mailto:Roehampton@met.police.uk)

Call our office on (Not for crime reporting, not monitored 24/7): **020 8785 8874**

To report something anonymously, visit:  
[crimestoppers-uk.org](http://crimestoppers-uk.org)

To report a crime **call 101**, visit the Met's website [www.met.police.uk](http://www.met.police.uk) or your nearest police station. As always, **call 999** in an emergency.

# A warm welcome to those that remember the 60s



If you find yourself in the 60+ age group, you should consider yourself lucky! It means you can attend the 60+ Café that takes place every Thursday between 11am and 2pm in the Methodist Church at Minstead Gardens.

The Café offers a very reasonably priced selection of coffees, teas, hot chocolate, cold drinks, hot and cold lunches, sandwiches, and desserts. Their toasted sandwiches alone deserve a special mention!

As well as delicious food, the Café provides an opportunity to meet up with old friends and make new ones. Members' birthdays are celebrated with a cake which is cut and shared with everyone, and the Café puts on special events to celebrate occasions such as Easter and Christmas, often including a full roast dinner.

The 60+ Café was set up 13 years ago by Jean Vincett and Pam Harris as a nonprofit and volunteer-led hub of activity and companionship for anyone aged 60+.

New members are always made to feel welcome and carers are also welcome.



Pam (left) and Jean (right)

For more details, and to find out about forthcoming events, please contact **Pam** on **020 8788 5577** or **Jean** on **020 8397 8622**.





# THE ROEHAMPTON COMMUNITY BOX - 4 YEARS AND COUNTING!

A project to help young families during the pandemic has now provided over 26,000 boxes or grocery shops to the residents of Roehampton. As we celebrate the fourth anniversary of the Roehampton Community Box, it's not just about marking another year, it's a testament to the success of a community-driven project.



**The Roehampton Community Box is available to anyone that lives within the SW15 postcode or has children that attend a school within SW15.**

**We are open:**

Wednesday from 9.30am to 4pm and Thursday from 9.30am to 12.15pm.

You need to sign up every week for a specific time slot. If you would like support from the Roehampton Community Box, please email:

[communitybox@racketscubed.com](mailto:communitybox@racketscubed.com)

## A Community Working Together

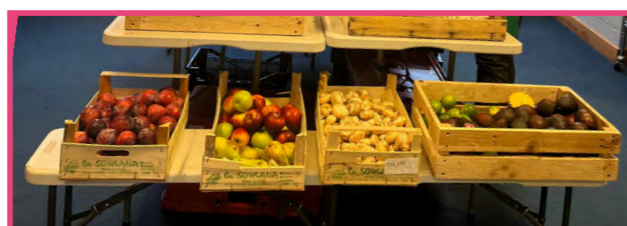
Back in 2020, Rackets Cubed, Regenerate and Heathmere Primary School - supported by FareShare - organised a team of volunteers to produce and deliver food boxes to families via a network of local primary schools.

As time has progressed, the format has changed; now the Roehampton Community Box is a social supermarket, staffed by volunteers, where a £4 donation gives you over £40 worth of groceries. The Roehampton Community Box offers high quality-groceries, including a selection of fresh fruit and vegetables for a small weekly contribution. Our customers can select their own products from the stock available and we operate a self-referral system.

## Partnerships that Matter

Our journey would not have been possible without the support of our incredible partners. We would like to take this opportunity to thank The Felix Project, City Harvest and the Dons for their continued support, Waitrose and The Ahmadiyya Community that regularly gives us food donations, The Wandsworth Hygiene bank that have provided us with toiletries over the years and the Blue Cross that have set us up as a pet food bank.

More recently, we have developed community partnerships with Citizens Advice, Wandsworth Council's Warm Spaces and Thinking Works to support the Roehampton community beyond the aisles of our supermarket, extending our support to individuals and families. We provide free tea and coffee on a Wednesday and Thursday morning and have regular visits from Citizens Advice and Thinking Works to provide advice and support. We have exciting plans for inviting more external speakers to our coffee mornings, so watch this space!



## Environmental Stewardship

Beyond addressing immediate food needs, our commitment to sustainability has been a driving force. A large percentage of the food we provide is supplied by surplus food providers, namely The Felix Project, City Harvest and the Dons. Every delivery we receive from these suppliers is reducing waste and is a step towards a healthier planet.

## Celebrating a success story

As we celebrate our fourth year, it's time to reflect on the numbers. We support approximately 200 families per week. We have a team of 25 local volunteers to run the social supermarket and to help with the 9 deliveries we get each week. To date we have handed out over 26,000 food parcels, which equates to approximately 260,000 meals.

## Looking Ahead

While reflecting on the past four years fills us with pride, our commitment to our community remains unwavering. As we look ahead, we envision the Roehampton Community Box evolving into an even more dynamic and impactful community resource. We will continue to innovate and adapt to the changing needs of the community, ensuring that the next four years are marked by even greater community collaboration.



*Four years ago, the Roehampton Community Box began as a quick-fix solution for an immediate need for food during the pandemic. As we celebrate this milestone, we express gratitude to everyone who has been part of this incredible journey. Together, we've proven that a social supermarket can be more than just a place to shop - it can be a force for positive change in the lives of individuals and the Roehampton community.*

**Here's to many more years of impact!**







# NIGHT TIME OUR TIME

A Night Time Strategy for Wandsworth



## ROEHAMPTON RESIDENTS AT WANDSWORTH'S NIGHT TIME STRATEGY LAUNCH

Wandsworth Council launched its 'Night Time, Our Time' Night Time Strategy in November last year, hosting speeches at the Town Hall by the Deputy Leader of the Council, London's Night Czar, the officer project team, consultants Publica who led on the Sounds of the Borough project, and Roehampton resident Tatiana Dobrev.



Amy Lamé and Cllr Kemi Akinola



The Sound Exhibition



Tatiana Dobrev

Tatiana, who had taken part in the sound project, told the audience how important it was for Roehampton to have been included in this crucial night-time work.

A sound exhibition was also part of the event, presenting all the voices recorded for the Sounds of the Borough creative project, including voice excerpts from Roehampton residents Basma and Asma (who featured in Issue 34 of Alton News). It was a wonderful way to showcase the range of experiences from across the borough. Work will now begin to put the recommendations into action, with the intention of improving the night-time for all in Wandsworth.

Deputy council leader, Councillor Kemi Akinola, said: "We spoke to hundreds of people before finalising our strategy because we know that how you experience the night time depends on who and where you are. We were particularly keen to make sure we got the views of people who may be vulnerable or less likely to get their voice heard, such as women, young people and low-income workers."

"Now we have set out our strategic vision, the work will begin in making sure that we can deliver the quick wins and long-term changes that will make a huge difference."

Amy Lamé, London's Night Czar, said: "I am delighted to see the launch of Wandsworth's new night-time strategy which will help local businesses to thrive, make neighbourhoods feel more welcoming and streets safer for everyone, particularly women and girls, after dark."

"Wandsworth is the first borough to publish their night-time strategy since the GLA's recommendation, and I hope this encourages other boroughs to follow their lead. The Mayor and I are committed to working in partnership with every borough to ensure our high streets, public spaces and workplaces are fair, safe, and inclusive at night as we build a better, more prosperous London for everyone."

To find out more about the Strategy, visit [wandsworth.gov.uk/business-and-licensing/town-centres/night-time-strategy](http://wandsworth.gov.uk/business-and-licensing/town-centres/night-time-strategy)



## Our Roehampton

The Roehampton Trust is now using a new name 'Our Roehampton'. And the charity is building a new organisation to support the whole of the Roehampton community.



Roehampton Community Weeks Celebration Event

The Trust has been producing the community magazine, Roehampton Voice, and providing small grants since 2011. Now, the Trust has welcomed local people involved in the Roehampton Capacity Building Project as Trustees, and there are ambitious plans for the future.

"Everything that Our Roehampton does will be aimed at improving the lives of local residents," says Angus Robertson, the new Chair of Trustees. "We want to connect people and groups in Roehampton and help them to work together to create a thriving community that develops solutions to local issues. We also want to help local groups to grow stronger and to speak up for the needs of Roehampton residents."

"Ultimately, Our Roehampton would like to develop a thriving new community centre to make it easier for local people to get support in one place and to run activities with and for residents", Robertson said.

The Roehampton Capacity Building Project started in 2020 and led to the COVID-19 Response Network and community collaborations, such as Roehampton Community Weeks, being launched. It also helped support the growth of several community projects, including the Roehampton Community Box. Last summer's Roehampton Community Weeks saw over 90 free events, for all ages, organised over the summer holidays – from fun days, to sports of all kinds and DIY skills. The Weeks culminated in a Celebration Event hosted at the Roehampton Club and attended by Fleur Anderson MP, which brought together over 40 residents, community groups and organisations who all played a part in making the programme such a success.

The new Our Roehampton Board of Trustees, mostly local residents, have developed an initial plan, and the next goal is to have a small staff team to help make the plan a reality. "We've just had some really good news about funding" says Angus. "Both the Wimbledon Foundation and the Roehampton Parish Trust have made significant grants for the next three years to Our Roehampton so we'll be advertising for the charity's new Director towards the end of March". There's more information about the plans at [www.roehamptonvoice.org/roehampton-trust](http://www.roehamptonvoice.org/roehampton-trust)

For now, Our Roehampton will produce the quarterly magazine, Roehampton Voice, and continue to host the monthly Roehampton Network, which shares information between residents, community groups, and statutory partners and sets up new collaborations. Roehampton Community Weeks will also be co-ordinated and funded. Planning for 2024 has started!

Finally, Angus says "Our Roehampton is seeking a new volunteer Treasurer. It would be great if a financial professional who lives in Roehampton, wanted to join Our Roehampton at this exciting time". Information about what's involved and how to apply is at: [roehamptoncommunit.wixsite.com/ourroehampton](http://roehamptoncommunit.wixsite.com/ourroehampton) and the deadline for applications is 10am on Wednesday 3rd April.

If you have questions about being the Treasurer or anything else about Our Roehampton, please email Julie Mallett, the interim Project Lead on [julie.mallett@cawandsworth.org](mailto:julie.mallett@cawandsworth.org) or call 07858 621 678.

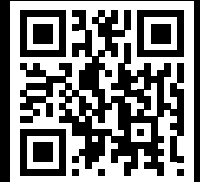




## You now need to show photo ID when voting in person at a polling station

If you don't have photo ID don't worry, you can apply now for a free **Voter Authority Certificate** for use at future elections.

More information on accepted photo IDs can be found at [wandsworth.gov.uk/voterid](http://wandsworth.gov.uk/voterid)



### Sign up to receive text alerts

Our text message distribution list will enable residents to receive news and event information relating to the Alton Regeneration quickly and directly.

If you are interested in signing up to receive our text alerts, please call or text **020 8871 6207** or email us at [roehampton@wandsworth.gov.uk](mailto:roehampton@wandsworth.gov.uk) with your name, address, mobile phone number and the phrase/subject line 'Alton text alerts', and we will add you to our SMS distribution list.

### Alton Newsletter have your say!

The Alton Regeneration Team try to put together news and articles that we think you'd like to read. Do you enjoy it? Is it relevant and of interest? What else would you like included?

We'd appreciate your feedback to help shape future editions.

Please send any complimentary comments or constructive criticism to our mailbox, [roehampton@wandsworth.gov.uk](mailto:roehampton@wandsworth.gov.uk) putting 'NEWSLETTER FEEDBACK' in the subject line.

Or call us on **020 8871 6207**.

We look forward to hearing from you.



### Roehampton Ward Councillors

Councillor Jenny Yates  
[cldr.j.yates@wandsworth.gov.uk](mailto:cldr.j.yates@wandsworth.gov.uk)

Councillor Matthew Tiller  
[cldr.m.tiller@wandsworth.gov.uk](mailto:cldr.m.tiller@wandsworth.gov.uk)

Councillor Graeme Henderson  
[cldr.g.henderson@wandsworth.gov.uk](mailto:cldr.g.henderson@wandsworth.gov.uk)

You can also contact the Cabinet Member for Housing:

Councillor Aydin Dikerdem  
[cldr.a.dikerdem@wandsworth.gov.uk](mailto:cldr.a.dikerdem@wandsworth.gov.uk)



### Regeneration Team

You can contact the Regeneration Team on **020 8871 6207** or [@AltonMasterplan](https://twitter.com/AltonMasterplan) or at [roehampton@wandsworth.gov.uk](mailto:roehampton@wandsworth.gov.uk)

If you would like to discuss anything in person with a member of the team, please contact us and an appointment can be arranged. You can also find us at the Information Stall outside the Base on Danebury Avenue each Friday, from 2pm-4pm.



Councillor advice sessions are held on the first Saturday of every month at Roehampton Library, 2 Danebury Avenue, from 11am - 12 noon.

