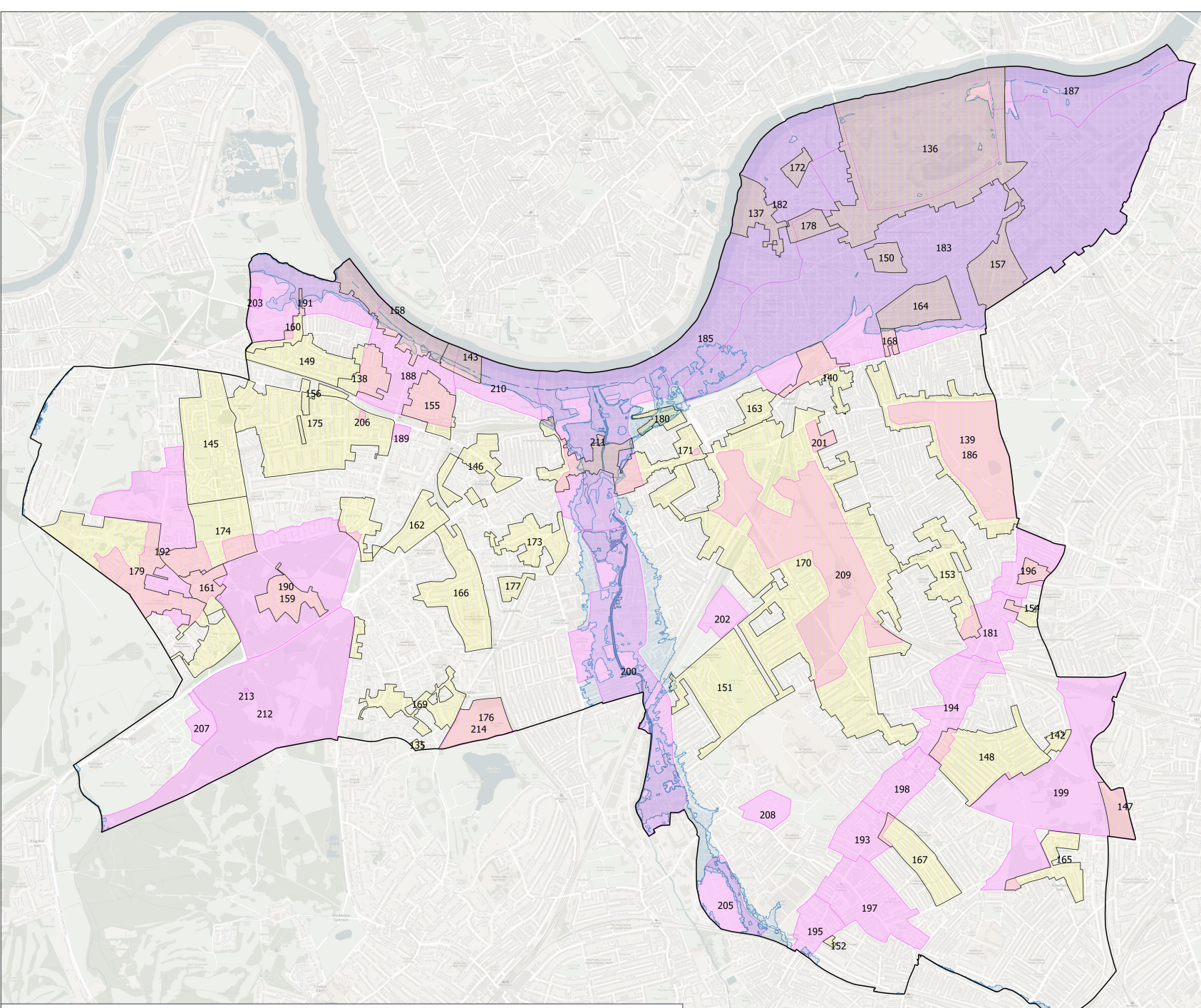


Proposals List

- Conservation Areas
- 135. Bathgate Road
- 136. Battersea Park
- 137. Battersea Square
- 138. Charkwood Road/Lifford Street
- 139. Clapham Common
- 140. Clapham Junction
- 141. Coalscroft Road
- 142. Culverden Road
- 143. Deodar Road
- 144. Dismore Road
- 145. Dover House Estate
- 146. East Putney
- 147. Garrads Road
- 148. Heaver Estate
- 149. Landford Road
- 150. Latchmere Estate
- 151. Magdalen Park
- 152. Melkon Road
- 153. Nightingale Lane
- 154. Old Devonshire Road
- 155. Oxford Road
- 156. Parkfields
- 157. Parktown Estate
- 158. Putney Embankment
- 159. Putney Heath
- 160. Putney Lower Common
- 161. Roehampton Village
- 162. Rusholme Road
- 163. St John's Hill Grove
- 164. Shaftesbury Park Estate
- 165. Streatham Park
- 166. Sutherland Grove
- 167. Totterdown Fields
- 168. Town Hall Road
- 169. Victoria Drive
- 170. Wandsworth Common
- 171. Wandsworth Town
- 172. Westbridge Road
- 173. West Hill Road
- 174. Westmead
- 175. West Putney
- 176. Wimbledon North
- 177. Wimbledon Park Road
- 178. Three Sisters
- 179. Alton
- 180. Old York Road

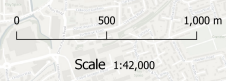
- Archaeological Priority Areas
- 181. Balham - Tier II
- 182. Battersea - Tier II
- 183. Battersea Channel - Tier III
- 184. Battersea Park - Tier II
- 185. Bridgecourt - Tier II
- 186. Clapham Common - Tier III
- 187. Nine Elms - Tier II
- 188. Putney - Tier II
- 189. Putney - Tier II
- 190. Putney Heath - Tier II
- 191. Putney Riverside and Putney Lower Common - Tier II
- 192. Roehampton - Tier II
- 193. Stane Street - Tier II
- 194. Stane Street - Tier II
- 195. Stane Street - Tier II
- 196. Stane Street - Tier II
- 197. Tooting - Tier II
- 198. Tooting Bec - Tier II
- 199. Tooting Common - Tier III
- 200. Wandale Valley Wandsworth - Tier II
- 201. Wandsworth Cemeteries - Tier II
- 202. Wandsworth Cemeteries - Tier II
- 203. Wandsworth Cemeteries - Tier II
- 204. Wandsworth Cemeteries - Tier II
- 205. Wandsworth Cemeteries - Tier II
- 206. Wandsworth Cemeteries - Tier II
- 207. Wandsworth Cemeteries - Tier II
- 208. Wandsworth Cemeteries - Tier II
- 209. Wandsworth Common - Tier III
- 210. Wandsworth Park - Tier II
- 211. Wandsworth Town - Tier II
- 212. Wimbledon Common - Tier II
- 213. Wimbledon Common Barrow - Tier I
- 214. Wimbledon Park - Tier II



KEY

- Borough Boundary
- Flood Zone 2
- Conservation Areas
- Flood Zone 3a
- Archaeological Priority Areas
- Flood Zone 3b

Flood Zones: These flood zones should be considered indicative. Further confirmation of current flood zones should be obtained from the Environment Agency.



This map is produced from Ordnance Survey material with permission of Her Majesty's Stationery Office. Crown copyright. Unauthorised reproduction infringes Crown copyright and may lead to prosecution or civil proceedings. Wandsworth Borough Council (License No. 100019270) 2022



**Wandsworth Local Plan
Publication Version
(Regulation 19)
Policies Map 3 / January 2022**

Environment and Community Services Directorate
Wandsworth Council
The Town Hall
Wandsworth High Street
London, SW18 2PU
www.wandsworth.gov.uk
planningpolicy@wandsworth.gov.uk