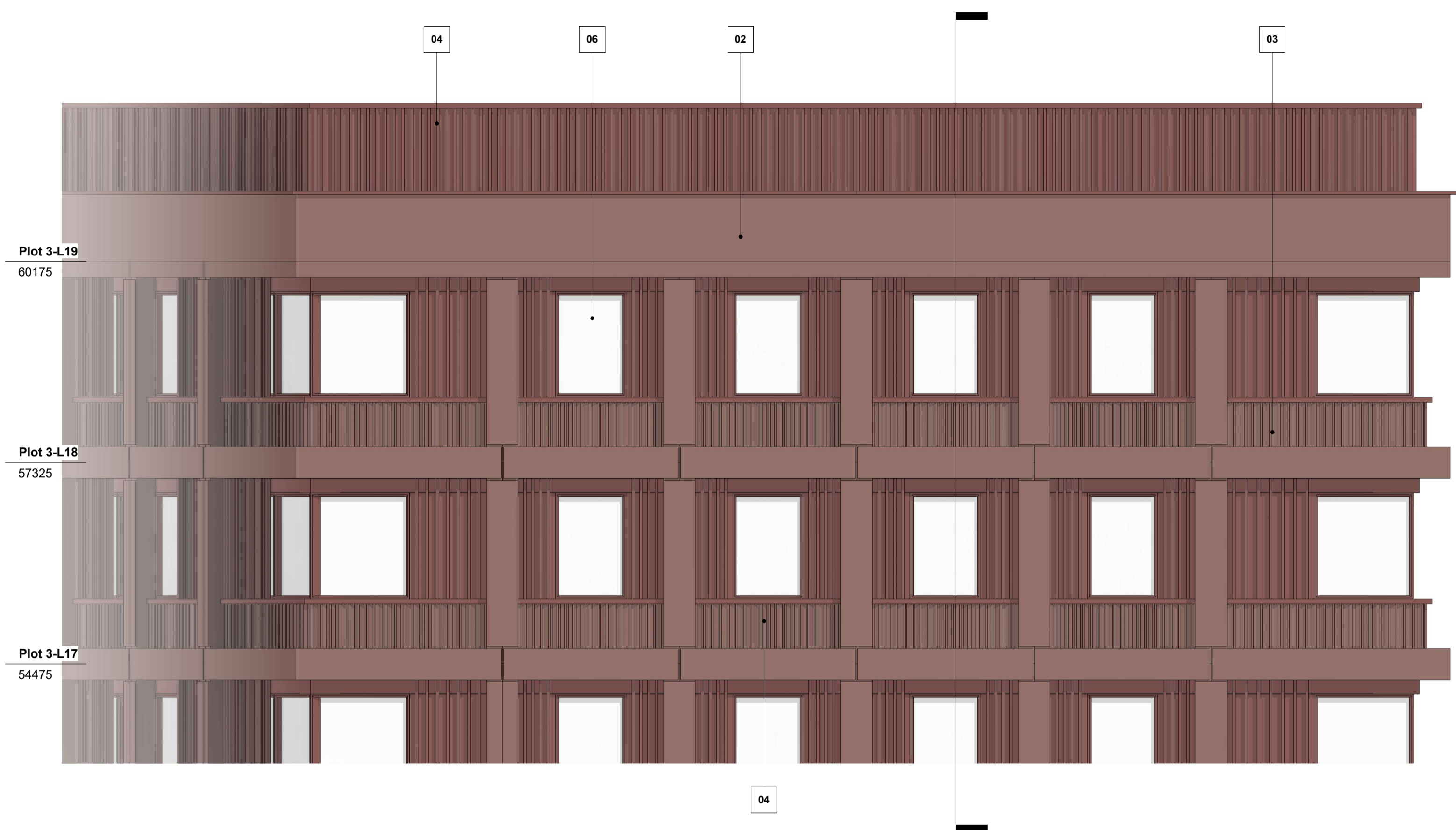
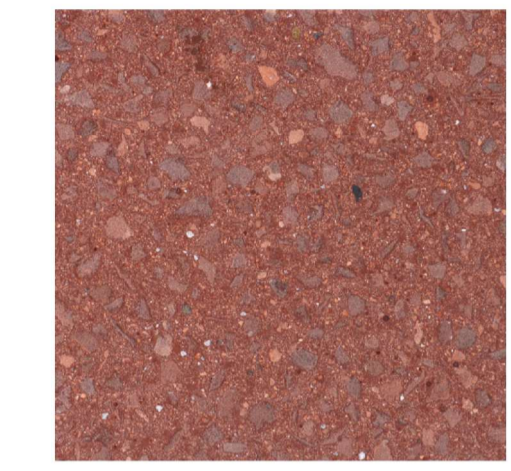
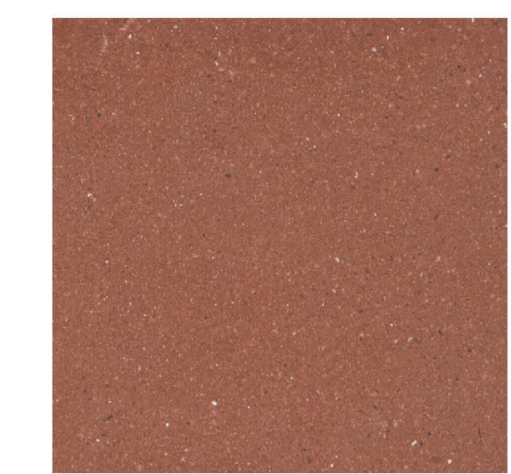


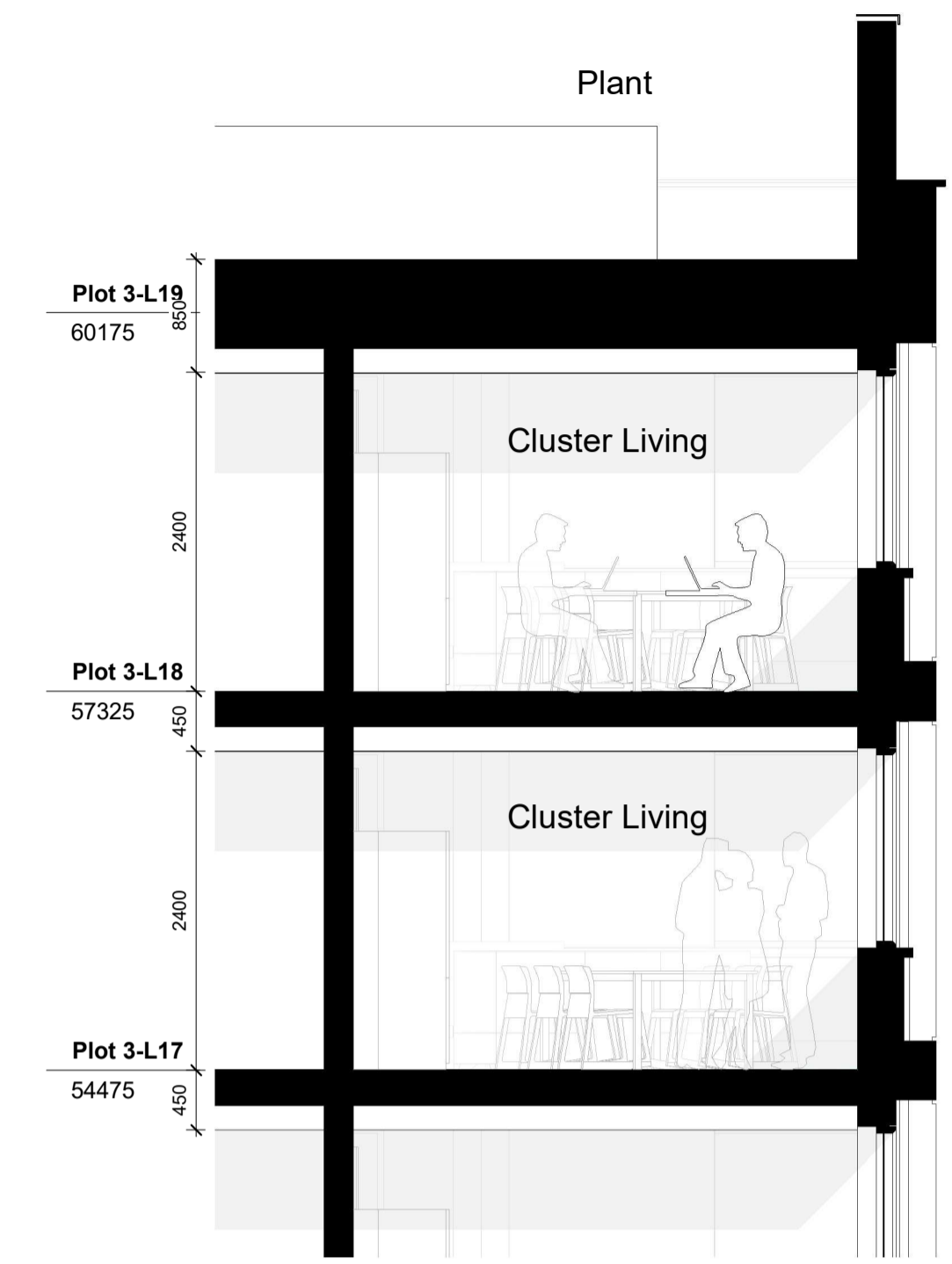
Dimensions are not to be scaled from on this document. Notify Howells of discrepancies affecting the information shown. This drawing is copyright of Howells, the trading name of Glenn Howells Architects Limited.

**MATERIAL KEY**

01	Dark Red Grit-Blasted Precast Concrete with Exposed Aggregates
02	Dark Red Acid-Etched Precast Concrete
03	Dark Red Acid Etched Precast Concrete Upstand with Vertical Texture
04	Oxide Red PPC Aluminium Plant Screen with Vertical Ribbed Texture
05	Oxide Red PPC Aluminium Door
06	Oxide Red PPC Aluminium Frame Fixed Window
07	Oxide Red PPC Aluminium Frame Fixed Window with Openable Side Vent Panel
08	Oxide Red PPC Aluminium Frame Projecting Window with Shadow Gap Reveal
09	Oxide Red PPC Aluminium Solid Panel with Vertical Fins



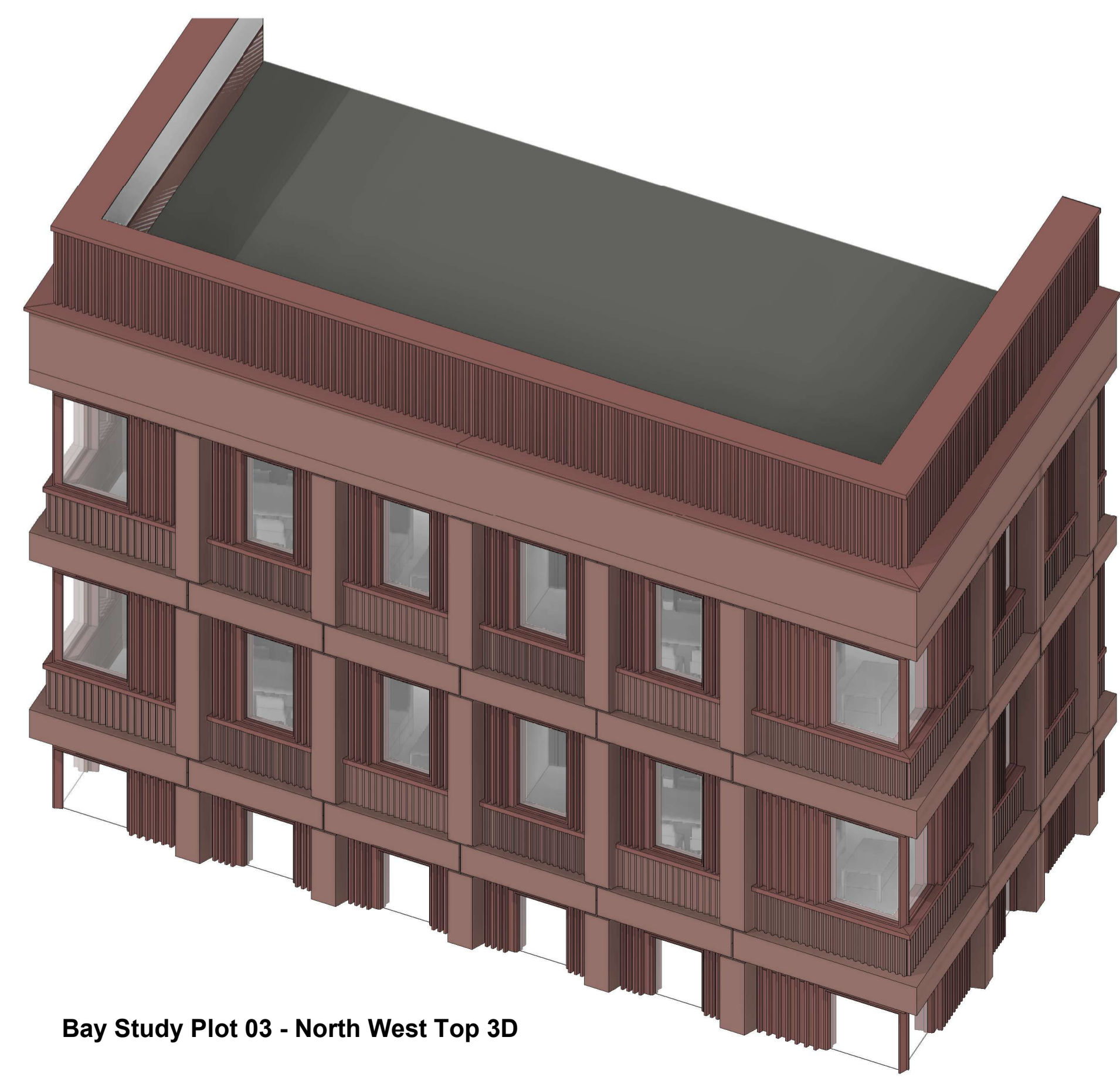
**Bay Study Plot 03 - North West Top Elevation**  
1 : 50



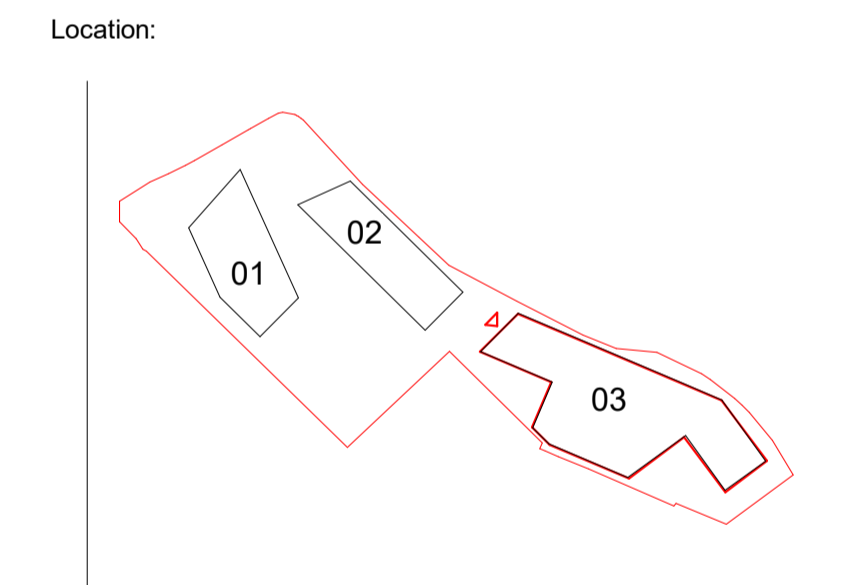
**Bay Study Plot 03 - North West Top Section**  
1 : 50



**Bay Study Plot 03 - North West Level 18 Plan**  
1 : 50



**Bay Study Plot 03 - North West Top 3D**



Location:

Status: **PLANNING**

Revision History:

P01	Issued for Planning	29/04/2022	JA
P02	Issued for Planning	18/04/2023	SI
P03	Issued for Planning	04/12/2024	AS

Checked: RK

Project & Client:  
41-59 Battersea Park Road working with Watkin Jones

File Title: Plot 03 - Bay Study (Sheet 2 of 4)

Scale: As indicated @A1

File ID: 2278-GHA-03-ZZ-DR-A-21111

Revision: P03