

The plan for Wandsworth



A fairer, compassionate more sustainable **Wandsworth**





We recommend the PDF viewer uses high-contrast colours by setting the 'replace document colours' in settings to 'use high-contrast colours'.

A fairer, compassionate more sustainable **Wandsworth**

Leader of the council, Simon Hogg

Wandsworth is a fantastic place to live. Our strong, diverse communities represent the best of modern Britain.

The new administration is committed to making Wandsworth fairer, more compassionate and more sustainable.

This Corporate Plan for 2022-2026 sets out the council's vision for what we will achieve over the next four years.



We've already hit the ground running with a whole range of ambitious policies including building a thousand new homes for council rent, the biggest Cost of Living support package in London and significant progress on our pledge to be a carbon neutral council by 2030.

As important as what we'll achieve is how we'll achieve it. Wandsworth will be a council that truly listens – to our residents, our businesses and our brilliant voluntary sector.

Many local families are struggling to make ends meet, so we remain committed to keep the same low council tax. We will do everything we can to support and protect residents across all our communities in these tough times.

This plan will help keep Wandsworth special – and make sure all residents can share the fantastic opportunities our borough provides.



A fairer Wandsworth

We will work towards ensuring all local people have a genuinely affordable place to call home.
We will support residents who are impacted by the cost of living crisis.

A more compassionate Wandsworth

We will be a compassionate Council that truly listens and is ambitious for all.
We will create safer neighbourhoods where communities feel confident and protected and victims and survivors are supported.

A more sustainable Wandsworth

We will tackle climate change by working together with our residents, businesses and communities and will be carbon neutral as a council by 2030.



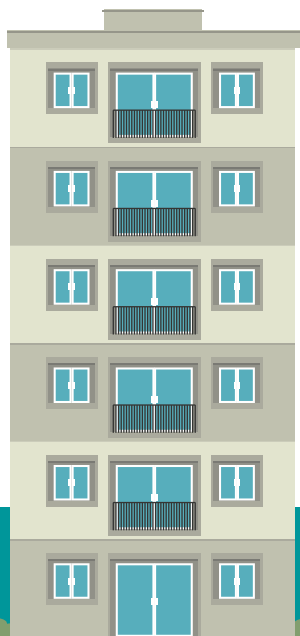
A fairer Wandsworth

We will work towards ensuring all local people have a genuinely affordable place to call home.



by...
2026

- There will be 1,000 new council homes – guaranteed for local people and their sons and daughters.
- Developers will be building homes which meet the needs of Wandsworth residents.
- 50% of housing on all new developments will be affordable.
- There will be a landlord licencing scheme meaning less rogue landlords and higher standards in the private sector rental market.



by...
**March
2026**

- There will be a Renters' Charter for the borough, an in-house service to make sure repairs get done and renters get their deposit back. All rented homes will meet the minimum energy efficiency standards.
- The Council will have a reputation for actively campaigning for London-wide rent controls so renters can save up for a place of their own.
- There will be accountability on the Council's Housing repairs and cleaning, and all will be done promptly and to a high standard.



by...
**March
2026**

- Affected residents will be balloted on all regeneration plans.
- Wandsworth Council will have a reputation for tackling homelessness and reducing the use of temporary accommodation, particularly for children.
- Residents will have the opportunity to be involved in what is built in their neighbourhood.



by...
**March
2026**

- Service standards for tenants and leaseholders will have been reviewed, including a review of existing consultation arrangements with leaseholders on major works and service charge billing. Standards that residents expect from the repairs service will be clear and delivered against.



We will support residents who are impacted by the cost of living crisis.

by...
**March
2026**

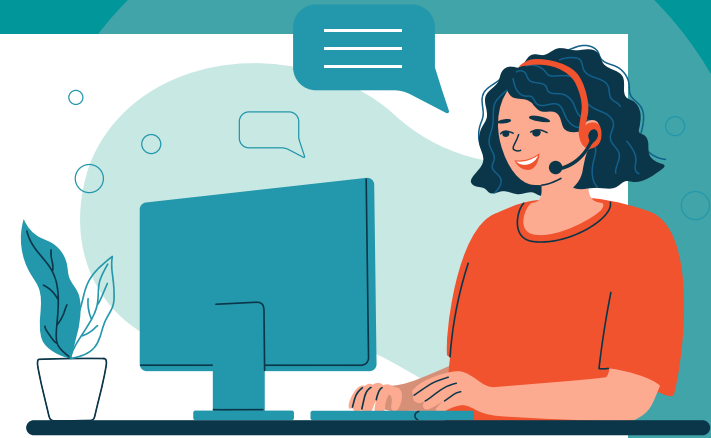
- Residents will pay the same, low council tax.
- Residents and businesses will have been supported through the Cost of Living Crisis.
- Funding will have been raised from levies on developers to fund support for Wandsworth residents.
- Where appropriate levies on property developers will be used to fund services such as more youth workers.

by...
**March
2026**

- All council workers whether employed by the Council or with a contractor will be paid the Living Wage and more employers in the borough will see the benefits of paying the Living Wage.
- Work even harder to address digital poverty with a particular focus on the most vulnerable.
- There will be more community activities on our commons and parks and costs related to renting our sports pitches across the borough will have been reduced so that everyone can afford to take part in sport and exercise can be free and community led.
- Widen participation in library activities.

by...
**March
2026**

- Wandsworth will have recovered from the impact of Covid, with more businesses located in Wandsworth and initiatives in place to support working from home.
- Work Match will be supporting local residents into employment, including at the Apple HQ at Battersea Power Station.
- There will be 1,000 new apprenticeships.
- The Council will continue to be run efficiently and effectively.
- Ensure that fair access to voting is enabled for all.



A more compassionate Wandsworth

We will be a compassionate council that truly listens and is ambitious for all.



by...
March
2026

Wandsworth will
be recognised
as a Borough of
Sanctuary.



by...
**March
2026**

- Wandsworth will be recognised as a Borough of Culture.
- Children's Services will be recognised by Ofsted as significantly improving outcomes for children and families, with Family Safeguarding embedded and the Council recognised as a compassionate Corporate Parent.



by...
**March
2026**

- Children, parents and carers will feel listened to and will have a seat at the table to decide what services are right for their area.
- Young people will have somewhere to go, something to do and someone to speak to.
- Early help services will be focussed on delivering more outreach services, mentors for at risk young people as well as more universally accessible play sessions for under-fives at local children's centres.

by...
**March
2026**

- Healthy sporting activities will be accessible by children right across the borough each day of the summer holidays.
- Schools will be supported in our collective ambition to deliver excellent education for all children.
- There will be equality and greater inclusion in our schools with inequalities addressed by developing, in partnership with local schools, a borough-wide 'no exclusions' vision and strategies to promote racial equality, LGBTQ+ rights and the safety of girls.
- All primary school children eligible for free school meals will have full access to food during the school term and holidays.



by...
**March
2026**

- Local support for children with special educational needs and disabilities (SEND) will have improved and there will be more SEND hub places in mainstream schools.

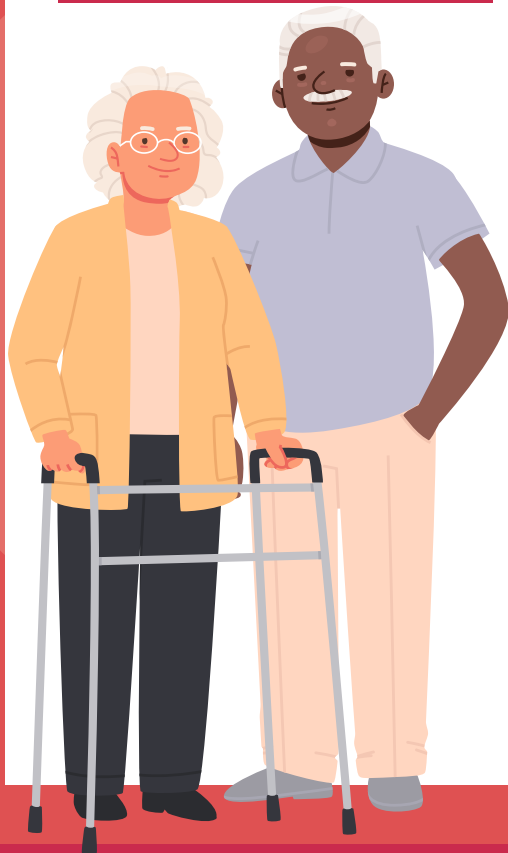


by...
**March
2026**



- By embedding services within our school communities, good mental health and well-being for all children will be promoted and students will be supported to resolve problems before they escalate.
- Adult Social Services will be recognised by CQC as providing residents with high standards of care and support.
- Action to narrow health inequalities will have been delivered, with a specific focus on prevention work.

March 2026



- The current crisis in mental health services, including waiting times for children's mental health services, will have been addressed by working with partners to effectively commission and deliver services.
- Older adults and isolated adults will be able to access services which reduce their isolation and feelings of loneliness.
- A vibrant voluntary sector will be at the heart of the community with Wandsworth being known as the best place in London to start and run a charity.
- There will be free and low-cost meeting spaces and support in place for organisations that involve volunteers.

We will create safer neighbourhoods where communities feel confident and protected and victims and survivors are supported.

by...
**March
2026**

- There will be more law enforcement officers on the streets through working in partnership with the Police.



by...
**March
2026**

- Wandsworth will be a safer space for women and girls where survivors get help when they need it and have access to specialist services. Support for victims of domestic violence will have doubled.
- There will be more CCTV.
- Trust between the police and local communities will have increased through joint work between the police, the council and young people.

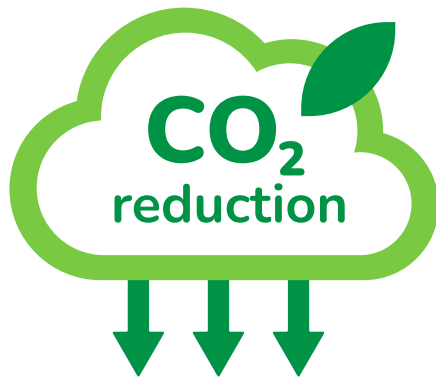


A more sustainable Wandsworth

We will tackle climate change by working together with our residents, businesses and communities and will be carbon neutral as a council by 2030.



by...
**March
2026**



- Emissions across Wandsworth will have decreased as a result of residents, businesses, partners and voluntary and community groups working together to reduce emissions.
- The Council will be on track to achieve its ambition to be carbon neutral by 2030.
- A Citizens' Assembly will have shaped the Council's approach to Air Quality with significant progress made on agreed actions.



by...
March
2026

- The Council will be on track to achieve a 60% reduction in the carbon footprint of the council's pension fund by 2030.
- Parks will be well maintained and well used by our residents. There will be more pocket parks and community gardens.
- The biodiversity of Wandsworth will be protected with more trees, flowers and plants across the borough.



by...
**March
2026**

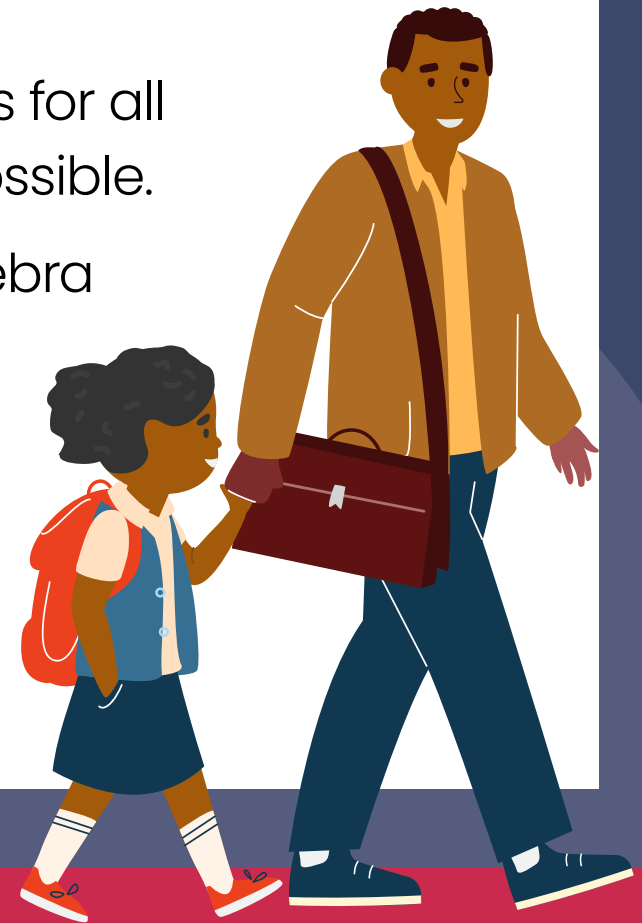
- Less plastic will be used in Wandsworth.
- Recycling rates will have improved and more residents will have access to food waste collections and weekly bin collections.
- “Mega Skips” will be held across the borough for bulky items.
- Streets will be cleaner with less incidents of fly tipping.



by...
**March
2026**

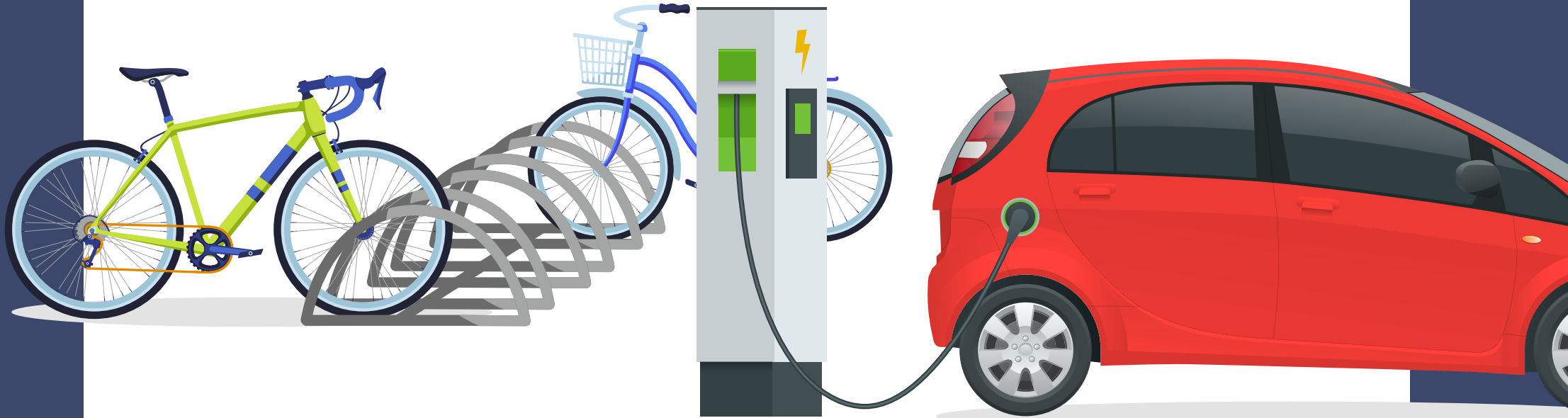


- Walking and cycling will be much easier and safer with more residents choosing to walk or cycle.
- There will be double the number of bike hangars in Wandsworth with all requests dealt with promptly.
- There will be School Streets for all primary schools, where possible.
- There will be convenient zebra crossings and safer junctions across Wandsworth which make for better journeys to school.



by...
**March
2026**

- There will be more EV charging points across all of Wandsworth with requests responded to in a timely manner.
- There will be fewer cars that idle and more zero emission buses.



by...
March
2026

- Where changes are proposed to roads all local residents are consulted and do not feel that one group of people is prioritised over another.
- The benefits of transport investment are experienced by all Wandsworth residents.
- It will be easier to report potholes and pavement defects and repair times will be shorter.



The plan for Wandsworth

A fairer, compassionate
more sustainable **Wandsworth**

Designed and produced by
Wandsworth Design & Print
wdp@wandsworth.gov.uk ·
TC2809(1.23)