

Brightside

Issue 202 December 2023

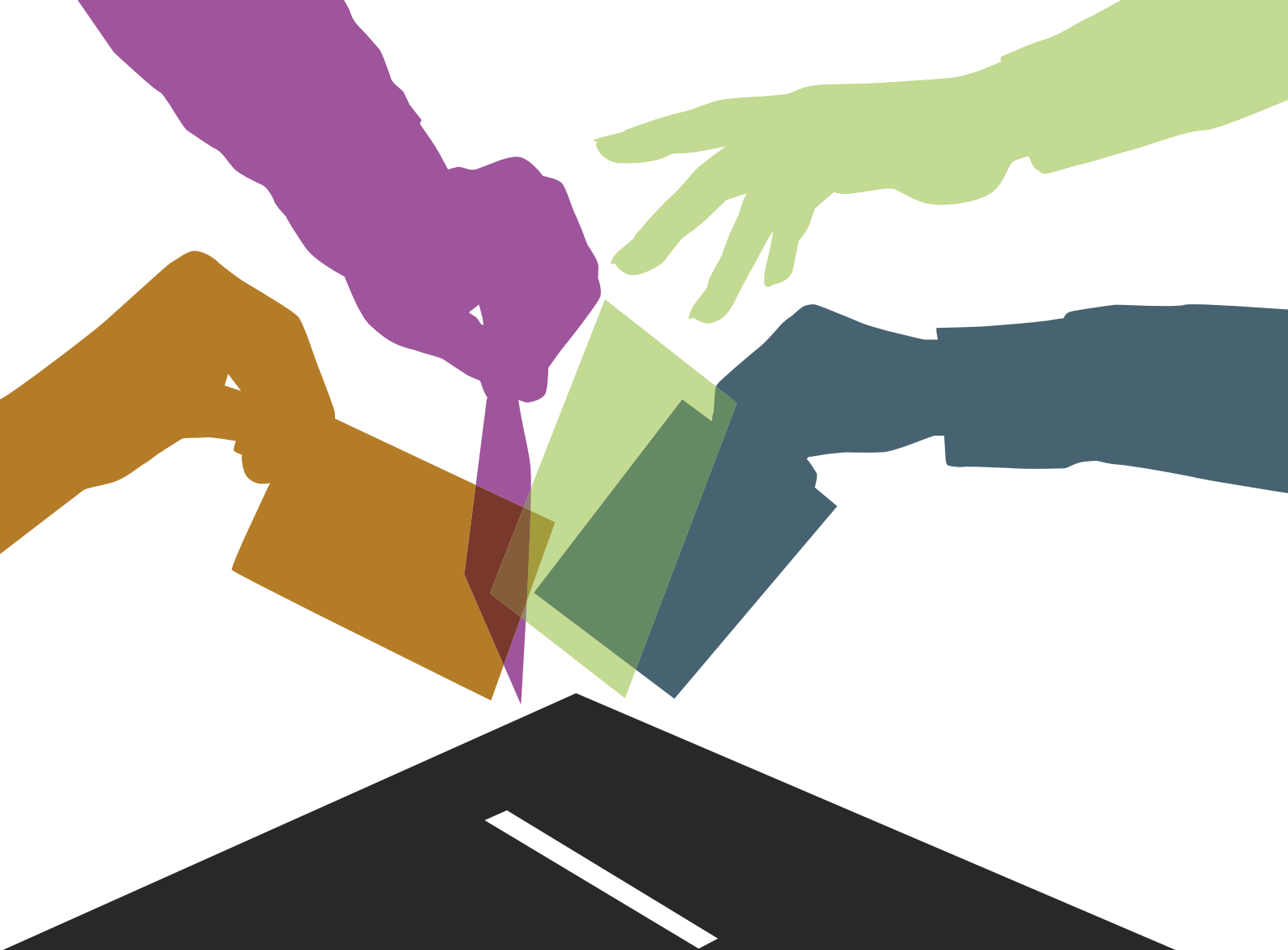
The magazine of Wandsworth Council



**New library for
Wandsworth Town** page 8

Delivered to 159,000 homes - Balham Battersea Earlsfield Furzedown Putney Roehampton Southfields Tooting Wandsworth





Keep your vote

You now need to show photo ID when voting in person at a polling station.

If you don't have photo ID don't worry, you can apply now for a free Voter Authority Certificate for use at future elections.

Visit voter-authority-certificate.service.gov.uk or call the helpline on 020 8871 6023



A list of accepted photo IDs can be found at gov.uk/voting-photo-id



12



Inside this issue

Cost of Living support pages 6-7

New library for Wandsworth Town pages 8-9

Streets fit for the future pages 10-11

Coffee with the Leader page 12

Borrow from our Library of Things page 13

Borough of Culture page 15

Your guide to waste and recycling pages 16-17

Celebrating Wandsworth's civic heroes page 18

Night Time Strategy launched page 19

Join your Neighbourhood Watch page 23

Commemorate notable people and places page 26

What's On pages 27-29

Useful Numbers page 31

12



18



Cover image: the new Wandsworth Town Library opening.

To obtain a copy of Brightside in large print please telephone (020) 8871 7266 or email brightside@wandsworth.gov.uk

OUR BRIGHTSIDE

Brightside is delivered to every home in the borough and pushed fully through the letterbox.

If you have any suggestions for articles or have a story you would like to tell us about please email: brightside@wandsworth.gov.uk or call:

Editorial (020) 8871 8902 Advertising (020) 8871 7266

We would love to hear from you.

Brightside is printed on environmentally friendly paper, please recycle.

£1,000 ULEZ vehicle grant



Have you recently changed to a ULEZ compliant vehicle?

You might be eligible for a £1,000 payment from Wandsworth Council.

For more information and to apply for the grant.



Scan the QR code or visit
[wandsworth.gov.uk/ulez-financial-assistance-scheme](https://www.wandsworth.gov.uk/ulez-financial-assistance-scheme)



Full marks for climate action

For the second year running, Wandsworth has achieved a prestigious A-grade for its work to mitigate climate change.



We are just one of 119 towns and cities worldwide to receive the top grade. Environmental impact non-profit CDP bases its A-rating on actions including being transparent about the climate change response, completing climate risk and vulnerability assessments, publishing a climate action plan and setting science-based climate targets.

Wandsworth's approach to mitigating climate change and improving air quality involves working closely with the local community and setting ambitious, achievable targets that can be met by the borough working together as a whole.

This year a Citizens' Assembly made up of randomly selected members of the public has made 53 recommendations to clean up the air, improve people's health and tackle climate change. And public sector partners, businesses and community groups

have been able to share knowledge with the council and each other through the Wandsworth Sustainability Partnership.

Other measures include a new Air Quality Action Plan, progress towards a net zero pension fund, work to encourage sustainable travel (see page 10), biodiversity projects, a new Library of Things to support the circular economy (see page 13) and measures to increase recycling (see page 16).

Cabinet member for Environment Judi Gasser said:

"Of course we are proud to receive an A-grade again this year, but we know we can't be complacent. The council is just part of the solution - we will continue to work with partners and, most importantly, listen closely to local people to ensure we are taking the bold action necessary to meet the climate change emergency."

An advertisement for the NHS Health Check. On the left, a purple box contains the text 'Get your FREE NHS Health Check from your GP'. Below this, a blue box lists eligibility criteria: 'You must be aged 40-74, have not been previously diagnosed with diabetes, kidney disease, heart disease or stroke and have not had an NHS Health check in the last five years.' Further down, another blue box provides the website 'wandsworth.gov.uk/healthchecks'. At the bottom left is the NHS Health Check logo, which includes a list of conditions: 'Helping you prevent diabetes, heart disease, kidney disease, stroke & dementia'. On the right, a man in a light blue t-shirt and jeans is painting a wooden door. The NHS logo is in the top right corner, and the Wandsworth logo is in the bottom right corner.

Get your FREE NHS Health Check from your GP

You must be aged 40-74, have not been previously diagnosed with diabetes, kidney disease, heart disease or stroke and have not had an NHS Health check in the last five years.

For more information visit - wandsworth.gov.uk/healthchecks

NHS HEALTH CHECK

Helping you prevent
diabetes
heart disease
kidney disease
stroke & dementia

NHS

THE BRIGHTER BOROUGH
Wandsworth

Helping you through the winter

Our £10m Cost of Living support package continues this winter.

Community Spaces are open at venues around the borough, including all libraries. They all offer free warm drinks and somewhere safe and welcoming to relax and meet other members of your community. Many also have activities and things for children to do.

More people will be able to enjoy **free gym and swim**. So far well over 1500 people have taken up the offer, currently open to people on free school meals, universal credit, asylum seekers, care leavers and foster carers. The scheme is to be extended to the end of March and people on other benefits including housing benefit and council tax support could be eligible.

More than 2,000 have used our **Entitled To calculator** to find out what benefits they may be eligible for.



The council teamed up with South West London Energy Advice Partnership to hand out **Warm Packs** to low income households with poor energy efficiency. These included energy-saving devices such as radiator reflector panels. Residents and businesses can also access advice on energy efficiency.

More money will be available for **crisis support**. The money provides food and fuel vouchers for households in emergency situations, and white goods and furniture to support vulnerable households to live independently.

Find out more at [wandsworth.gov.uk/hub](https://www.wandsworth.gov.uk/hub)





The Wandsworth Cost of Living Commission has delivered its final report.

The Commission was set up to make sure the council works with partners and local people on a long-term approach to supporting people through tough financial times. Recommendations aim to address the systemic causes of cost of living pressures, create real change and make Wandsworth fairer, more compassionate and more sustainable. Potential solutions in the areas of housing, food, energy and transport were reached after a year of intensive discussions, evidence gathering and a public survey. Now the council will look at the recommendations and report back in February on how they will be taken forward.

Read the final report and recommendations at wandsworth.gov.uk/cost-of-living-commission

Wandsworth
Council

Cost of Living support

- Help with grants, bills and benefits
- Support for families
- Where to turn in a crisis and more



visit: wandsworth.gov.uk/hub

call: 0808 175 3339



Welcome to your new library!

 The new Wandsworth Town Centre library has opened its doors.



It stocks more than 40,000 books, and you can use computers and hire meeting spaces.

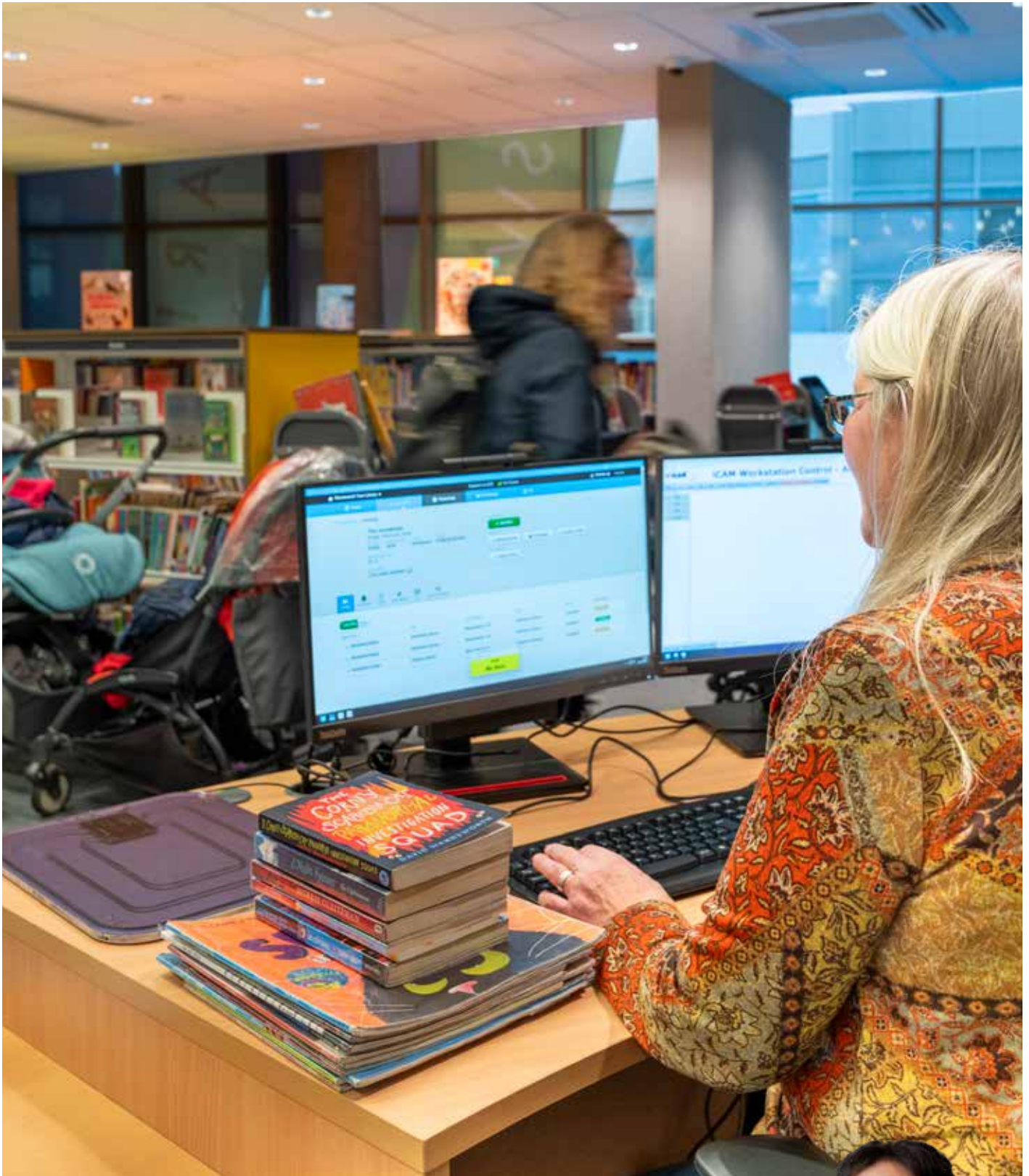
It also hosts a mini museum – part of the Wandsworth Heritage Collection. This displays items including costumes, portraits and even early household appliances. Future exhibits will be curated by Roehampton University students in collaboration with Wandsworth Council and the community.

Wandsworth has 11 libraries and a home delivery service, which are all managed on a day-to-day basis by charitable social enterprise GLL, the country's largest public libraries provider. Earlier this year a bigger and better Northcote Library opened its doors, leading to a 40 per cent increase in visitors. There has also been investment to upgrade the buildings at Putney, Tooting and York Gardens libraries.

Judi Gasser, Wandsworth Council's Cabinet Member for Environment said: "Wandsworth Town now has is a fully modernised library with a much larger children's section than was possible at the previous town centre library.



This investment in library services comes at a time when many councils in London and elsewhere are closing theirs to save money. This is absolutely not the case in Wandsworth."



“This investment in library services comes at a time when many councils in London and elsewhere are closing theirs to save money.”

Judi Gasser, Cabinet Member for Environment



Creating Future Streets

Future Streets, our plan to transform travel in Wandsworth, aims to make sure children aged 10-11 in the last year of primary school can safely walk or cycle to school. Here is an update on how we are getting on.

It is now a year since the new Walking and Cycling Strategy was agreed. **Progress so far includes**

- 26 new **bike hangars** on borough streets and 25 on housing estates, creating space to store a total of 306 bikes. There are currently 118 bike hangars in total with a further 110 locations providing space for 660 bikes are expected to be delivered by the end of 2024.
- The continued roll-out of **School Streets** to enable children to travel safely to school
- A standalone **Cycle Parking Strategy** including more cycle stands in put in better locations, and better maintenance of existing ones, bike hangars and lockers, designated bays for dockless bikes in busy areas and encouraging more use of cargo bikes and hire bikes.
- **Cargo bike** hire schemes for local businesses
- Setting up designated parking bays for **e-bikes** so they don't clutter pavements.
- The development of a **cycle route** network as well as 'quietway' cycle routes away from major roads.

A new protected cycle lane is now operating across Wandsworth Bridge.

The new 2m wide cycle lane with its protective wands has been delivered as part of the bridge's recent repair project which saw its critical weight bearing parts replaced to ensure the structure remains stable and safe to use over the coming decades.

The bridge's existing southbound cycle lane has also been retained making it safer for cyclists to travel over the bridge in both directions. A new northbound bus lane has also been introduced to improve bus journey times.

Plans for one of the borough's key walking and cycle routes in Burntwood Lane have been published, and closely reflect the wishes of local people following a public consultation.

There will be a protected cycle lane of the southern side between Beechcroft Road and Aboyne Road, while on the northern side a mandatory 2m cycle lane is planned, segregated where possible, between Tranmere Road and Sandgate Lane.

Other measure include extra crossings and raised 'Copenhagen crossings' across side roads. If you live locally look out for letters from our engineers setting out details and offering you a further chance to comment.



ROAD BRIDGE



Get your voice heard

We're getting out and about, meeting local people and finding out what really matters to the residents of Wandsworth.

It's all part of the council's pledge to get the whole borough involved in shaping the future of Wandsworth and making it fairer for everyone who lives here.

Recently Simon Hogg, leader of Wandsworth Council, held a coffee morning in the West Hill area.

As well as enjoying a cuppa and a chat with the leader, local councillors, police officers and their MP, residents spoke

face-to-face with council staff about issues including housing, street cleaning and areas needing improvement.

Simon Hogg
Leader of Wandsworth Council



More sessions are planned in the new year. Find out more at wandsworth.gov.uk/leaderscoffeemorning



Keep informed about all the ways you can get involved by signing up for our weekly newsletter, **Brightside Online**



“Instead of everyone buying expensive items they only use once or twice, we can share what we need. It saves money and waste and connects people with their community.”

Kemi Akinola , Deputy Council Leader

Borrow, don't buy

Need a drill, or a steam cleaner, or a sewing machine, but can't afford to buy one?

The council has teamed up with Library of Things for a low-cost, community-based hire scheme. For just a few pounds a day you can hire from a selection of household, DIY and gardening items. Reserve the item online, then collect it from a self-service locker in Southside Shopping Centre, Wandsworth Town Centre. You can sign up for membership, which will get you 25 per cent off.

You can also track how much waste you have saved by borrowing instead of buying and can take part in skill sharing sessions with your neighbours to learn practical skills like DIY and repairing.

It's part of the council's pledge to make Wandsworth more sustainable by supporting the 'Circular Economy'. It also helps prevent clutter in a city where space can be at a premium.

The Wandsworth branch joins 14 other Libraries of Things in London. Geoff, a member from Crystal Palace, said: "Borrowing makes sense because maybe you only want it for a day, or to use something every six months. It's so much easier and it's cost effective. If you were buying all these things and you only use them once or twice, it's really common sense that you could get a much better deal by having them hired."

Judi Gasser, Cabinet Member for Environment said: "Library of Things is a fast-growing movement and we're really pleased to be part of it. Instead of everyone buying expensive items they only use once or twice, we can share what we need. It saves money and waste and connects people with their community."



Find our more
participate.
[libraryofthings.co.uk/
wandsworth](http://libraryofthings.co.uk/wandsworth)



FREE

MEGA SKIP DAY

 **Our
Cleaner
Borough**

Working together for
a cleaner **Wandsworth**

Mega skip days are an opportunity for people to dispose of bulky items for free. Large skips are placed in neighbourhoods around the borough for all local residents to use.

We are running more mega skip days a year, instead of the previous 12, after figures showed they led to an **11% decrease in reported fly-tipping.**

Upcoming dates

Between 9am to 12noon
on the on these days

- Saturday 30 December 2023
- Saturday 27 January 2024
- Saturday 24 February 2024
- Saturday 30 March 2024

Residents can bring up to six items along with them to the mega skip for free, including some electrical equipment and household items like mattresses and sofas.

One bag of rubbish counts as one item, as does one sofa, one mattress, etc.



Visit our website for more details about Mega skip day – what items you can take, along with locations.





We've done it together!

After six months of listening to hundreds of community organisations, creative venues, businesses and residents of all ages, Wandsworth has entered its bid for London Borough of Culture 2025.

With an ambitious plan to improve access to culture for everyone across the borough, this is the first time Wandsworth has entered the London-wide competition.

As the first London borough to publicly announce its culture campaign in June, we have been able to consult thousands of local people and gather a wide range of views to help shape our bid.

Simon Hogg, Leader of Wandsworth Council, said: "We've heard how much people love Wandsworth but also about the challenges they are facing. I'd like to thank everyone who has shared their views and given their enthusiastic support to our bid. I really believe that whatever the outcome, we have already become a stronger and better-connected community during this participation process."

Wandsworth's bid aims to use the power of culture to drive positive change for local residents and organisations, connecting people and improving wellbeing.

The Mayor of London will announce the winning borough in March 2024 ahead of the year of culture beginning in April 2025.



Tell us what you love about Wandsworth and keep up to date with the latest news on our bid at [Wandsworth.gov.uk/culture](https://www.wandsworth.gov.uk/culture)



Wandsworth council has outlined plans to invest heavily in waste and recycling services through its Cleaner Borough Plan.

Guaranteed weekly rubbish and recycling collections, food waste collections for all by the end of 2024, more recycling points for electrical items and a new fleet of modern vehicles that can run on cooking oil are all part of plan.

Real Christmas tree recycling – from Mon 8 January

- **Homes with front gardens:** put your real Christmas tree out for collection next to your rubbish and recycling bags, on your usual collection day - not on the street.
- **No front garden?** put your tree just outside your front door on the pavement taking care not to block where people walk.
- **Trees out after 6.30pm please:** trees should be left out after 6.30pm on the day before the collection is due, not any earlier.
- **Blocks of flats:** residents who live in blocks of flats should leave their tree near to their rubbish or recycling bins store, making sure they do not block access to the bins.
- **Decorations and pots:** remove any decorations or pots first, as the trees are sent for composting.

wandsworth.gov.uk/christmas

“ We’ve listened to what residents have told us and are putting on extra Christmas tree collections this year so we can collect trees more quickly. ”

Judi Gasser, Cabinet Member for Environment

Christmas rubbish and recycling dates

Over Christmas and New Year, household rubbish and recycling collection dates will be a day later.

Normal Collection Day	Revised Collection Day
Monday 25 December	Tuesday 26 December
Tuesday 26 December	Wednesday 27 December
Wednesday 27 December	Thursday 28 December
Thursday 28 December	Friday 29 December
Friday 29 December	Saturday 30 December
Monday 1 January	Tuesday 2 January
Tuesday 2 January	Wednesday 3 January
Wednesday 3 January	Thursday 4 January
Thursday 4 January	Friday 5 January
Friday 5 January	Saturday 6 January
Return to normal	Monday 8 January

Real Christmas tree drop off points

To make it easier to dispose of your real Christmas tree as well as leaving it out for collection, you can take it to the following drop off points from Thursday 28 December.

Remove any pots or decorations first.

Tooting Common, Dr Johnson car park, SW17 8JU

Battersea Park, Albert Bridge car park, Albert Bridge Road, SW11 4NU

Battersea Park, Chelsea Gate, Carriage Drive North, SW11 4NJ



Recycle Right

■ Ahead of the festive period search for “Recycle locator tool” to visit Recycle Now’s recycling tool which gives you information about where and what you can recycle locally.

Wrapping paper – take the scrunch test

Wrapping paper which is laminated or is not made from paper (that is, made from plastic or aluminium) cannot be recycled.

If you can scrunch up your wrapping paper, it can go in your recycling, but if it bounces back, it goes in with your household rubbish.



Christmas crackers and card

A lot of traditional Christmas crackers contain packaging and plastic which cannot be recycled. If you have crackers with single-use plastic or glitter these cannot be recycled.

Card and paper Christmas cards can almost always be recycled, but look out for glitter, foil, sequins, jewels or musical cards which cannot be recycled.



Cardboard

Over Christmas you may end up with a lot more cardboard. If you live in house, flatten and cut down cardboard, place underneath your recycling bag. If you use a communal recycling bin, flatten and cut down cardboard and put inside the bin, not beside it.





Celebrating Local Heroes

Here are the winners of the 2023 Wandsworth Civic Awards – given by the council to people who go out of their way to help others and who make outstanding contributions to their local community.

Wandsworth Mayor Juliana Annan said: "The Wandsworth Civic Awards are the highest honour the council can award to truly outstanding citizens. It's an absolute honour to show them how much their efforts are appreciated by me, the council and the whole of Wandsworth."

Grace Salmon

Grace runs the charity Positive Network in Balham and works tirelessly for the local elderly Caribbean community.

Katherine Low Settlement (KLS)

KLS has welcomed thousands of refugees to Wandsworth. It runs free English classes for adults and children to build their confidence and help them integrate into British society.

Daren McCoy and JCT

Daren, fellow JCT (Just Come Together) directors Jonathon Mason and Errol Harrison and a team of volunteers work to keep young people out of the criminal justice system as well as providing other support such as food deliveries.

Ian Tattum

Ian is the Vicar at St Barnabas in Southfields and has turned the church into a hub for the whole community. He is also active in other areas of Southfields life including Green the Grid and as a Governor at Riversdale School.

Teresa Harris

Teresa started Learn to Love to Read in 2014 to help make every Wandsworth child a reader, no matter their background. Now 60 volunteers work in eight Wandsworth primary schools.

Nasiya Vorajee

Nasiya is a health and wellbeing councillor and runs the local Foodbank at Battersea Mosque. Nasiya also goes out of her way to support and provide guidance for women facing difficult situations at home.

Vicky Piggott

Vicky is a well-known member of the Roehampton community. She campaigns around Violence Against Women and Girls and leads on Roehampton's annual International Women's Day celebration.

Doddington Roof Garden

The roof garden hosts a range of programmes and events such as school summer holiday programmes, workshops with a horticulture therapist and school visits.



There were also two special awards:

Innovative, Inspirational Mental Health Initiatives -

Maisha Sumah

Maisha is a member of the Local Violence Against Women and Girls Forum, an award-winning mental health advocate, a mental health first aider and a youth mentor, as well as a volunteer at the Tooting Foodbank, where she speaks to people about their mental health.

Borough of Sanctuary Award -

Care for Calais

Carey Sedgwick and Seema Khan from Care4Calais provide essential support for refugees and asylum seekers making their home in Wandsworth.

Find out more at

[wandsworth.gov.uk/civicawards](https://www.wandsworth.gov.uk/civicawards)



Creating genuinely affordable homes

A bold new protocol sets out how the council will work with developers to maximise the creation of social homes for rent.

Councillors met with representatives from the development industry at the Wandsworth Town Hall to set out how best to build more social housing in the borough.

Council leader Simon Hogg said: "We understand that this is a two-way conversation, and it is important to strengthen relationships with property developers and be clear about how

we intend to work with them to deliver desperately needed affordable homes to local people, but also to understand their needs."

Darragh Hurley, Managing Director at Mount Anvil, said:

"We appreciate both the clarity of the developers' protocol and members willingness to engage directly and speak frankly about their priorities. We think this combination gives us the best chance of delivering new developments that work for local residents."

Have your say and read the protocol at [wandsworth.gov.uk/localplan](https://www.wandsworth.gov.uk/localplan)

The Night Time Strategy has been launched

The Strategy sets out recommendations on how to make the night time a better experience for everyone living, working and visiting Wandsworth. It covers issues around safety in public places, conditions for workers and public transport improvements at night. Working with partners we will strive to make the borough as inclusive, vibrant and safe as possible for all.

Read it at [wandsworth.gov.uk/night-time-strategy](https://www.wandsworth.gov.uk/night-time-strategy)



Empowering communities to help each other

The Wandsworth Grant Fund provides grants of up to £10,000 to Wandsworth-based community and voluntary sector groups to run projects that help local people.

As well as the main grant fund, new funding streams have been set up to help with the increased cost of living. This includes grants for groups to install kitchen equipment like cookers and fridges so they can provide hot food.

Here are just some of the groups that have benefited recently. To find out more about how to apply visit wandsworth.gov.uk/WGF

Plane Sight is a play based on real-life stories of people with learning disabilities. The grant fund supported the **Baked Bean Theatre Company** to run workshops and develop the play, performed at BAC last month. See more about Baked Bean at bakedbeancompany.com

Spencer Lynx has been named England Hockey Diversity and Inclusion Champion of the Year. The club was founded in 2019

with help from the Wandsworth Grant Fund and works to use the power of hockey and sport to engage with local young people, working closely with teachers to find out who would most benefit. **Find them on Instagram at @Spencerlynx.**

House of Love is a new mural at the **Katherine Low Settlement** in Battersea. Funded by the Wandsworth Grant Fund, it was painted by Adalberto Lonardi with the help of 47 volunteers over 147 hours and tells the story of the settlement and the people it has helped. Find out about their work at klsettlement.org.uk

A grant has enabled the **Work & Play Scrapstore** to partner with CREW Energy to deliver workshops and provide information about installing cheaper to run heating and lighting. Visit workandplayscrapstore.org.uk



Image: Sarah Elisabeth Photography, England Hockey



House of Love at the Katherine Low Settlement



Volunteers at the Work and Play Scrapstore



Age UK Wandsworth ran a Walk, Talk and Draw session, giving people a chance to get out and capture the colours of autumn.

Living their best life

Thanks to everyone who came to one of our Brighter Living Fair events in October.

Brighter Living is an annual festival of events held by organisations across Wandsworth for adults looking for care and support. Hundreds of people joined more than 150 events across the borough promoting healthy, safe and independent lifestyles.

Organisations interested in taking part next year can email brighterliving@wandsworth.gov.uk

Find out how to get care and support in Wandsworth at wandsworth.gov.uk/adult-social-care



St Paul's Community Centre helped older people get active, including 97-year-old Stephanie Norris who rediscovered her love of table tennis.



Silver Sunday included intergenerational workshops, crafting, movement and singing.

Help keep each other safe

Volunteers across the borough are helping to keep themselves and their neighbours safe by joining the Wandsworth Neighbourhood Watch Association.

There are 853 people signed up for neighbourhood watch in Wandsworth, run in partnership with Wandsworth Council, and 89 schemes with local volunteer coordinators.

Members get crime prevention information, and scheme coordinators can access the OurWatch Knowledge Hub and access resources provided by the council's Community Safety Team such as road signs and window stickers.

Jan Forbes has been elected chair of Neighbourhood Watch in Wandsworth. She said: "I've been a member of Neighbourhood Watch ever since I moved into Wandsworth many years ago. Through my membership I met my neighbours and was made to feel very welcome in my new home.

"Wandsworth's recent switch to supporting Neighbourhood Watch through ourwatch.org.uk has really brought the organisation up to date with a great online presence. The newly formed Association aims to introduce many more residents to the benefits of membership and to provide support for all the volunteer coordinators out there and the ones yet to be recruited."

To find out more

Visit ourwatch.org.uk/area/london-borough-wandsworth

Email abbie.ball@richmondandwandsworth.gov.uk or wandsworthnwassociation@gmail.com



l-r Jan Forbes, Cheryl Spruce from the National Neighbourhood Watch Network, Cabinet Member for Community Safety Graeme Henderson, vice-char Sylvie Chrzanoswka and Superintendent David Bannister.

Get the COVID-19 and flu vaccine

As we enter the Winter months it is important for us to take care of our health and wellbeing. Vaccines are our best protection against flu and COVID-19.

Over the last few years, they have kept tens of thousands of people out of hospital and helped to save countless lives. In winter, flu and COVID-19 spread more easily as we spend more time indoors. Getting these vaccines ahead of winter are two of the most important things you can do to keep yourself and others around you safe and 'get winter strong'.

Where to get the vaccines

You can visit an NHS walk-in clinic across the borough to get your vaccines this winter – search for "NHS Wandsworth flu and COVID-19 walk in". You can look out for the council's health bus which is going out to a number of locations this winter.

Health bus - Roehampton

Friday 8 December, 11.30am to 4pm

St Joseph's Church, 218 Roehampton Lane, SW15 4LE

COVID-19 and Autumn booster eligibility

- all adults aged 65 years and over
- adults under age 64 years in a clinical risk group.
- all frontline health and social care workers.
- adults under age 64 who are household contacts of people with immunosuppression,
- adults under age 64 who are carers, and staff working in care homes for older adults.

Flu vaccine eligibility

- all adults aged 65 years and over
- all adults under 65 years of age who have a medical condition
- all pregnant individuals
- people who receive a carer's allowance, or are the main carer for an older or disabled person
- all adults living with someone who has lowered immunity due to disease or treatment
- all frontline health and social care workers.



Image: Jolic

A group of friends from Mayfield School in the 1980s.



Help us remember our history

Nominations are open for the Wandsworth Green Plaque scheme, commemorating the borough's important and historic people, places, events and buildings.

Applications are particularly encouraged for commemorative plaques that highlight stories that have been historically overlooked, including the histories of LGBTQ, Black, Asian, female and working-class people and communities.

The Wandsworth scheme is designed to honour famous people or places in the borough that are not covered by the English Heritage Blue Plaque Scheme. Existing green plaques include tributes to war heroes, early cinemas, actors and writers, the recording studio used by The Who and even the site of the first modern football match.

Deputy council leader Kemi Akinola said: "As we bid to become London Borough of Culture 2025, it is more important than ever to remember the people and places who have helped make Wandsworth so culturally and historically rich and vibrant. We think there's still a lot of important untold stories out there, so please help us tell them."

The deadline to nominate is January 5.

Visit [wandsworth.gov.uk/the-green-plaque-scheme](https://www.wandsworth.gov.uk/the-green-plaque-scheme)

“We think there's still a lot of important untold stories out there, so please help us tell them.”

Kemi Akinola

Deputy council leader



A man dressed as Santa Claus is seated in a red sleigh. He has a full white beard, wears glasses, and is dressed in a red suit with a thick fur trim and a red hood. He is smiling slightly. The background is dark with some blurred lights.

WHAT'S ON?

Santa's Grotto

Weekends until Christmas Eve

- Meet the man himself.
- Book in advance.

Battersea Arts Centre bac.org.uk



Gig Band Christmas Concert

December 15

Young musicians perform solo, trio and ensemble performances of Christmas classics, led by the vocalist and guitarist Sian Kelly, and guitarist Scipio Mosley.

World Heart Beat Embassy Gardens
worldheartbeat.org/whats-on

Swim!

Until December 27

See works by local artist Clare Paterson celebrating Balham Leisure centre and the community that uses it.
Balham Leisure Centre



Roots to Change CIC: The Big Reshape Exhibition

Until December 9

Free pop-up installation featuring community artwork imagining a world where women and girls can live free from harm.

Battersea Library

Christmas Coffee morning and table top sale

December 9, 10.30am-noon

Enjoy a cuppa and browse for Christmas gifts. Free entry.

Earlsfield Baptist Church, Magdalen Road

My Fair Lady

December 13-22

The much-loved music comes to the state in Putney

Putney Arts Theatre

Putneyartstheatre.org.uk

Age UK Wandsworth Carol Concert

December 14, 6.30pm-8.30pm

Professional and singalong carols plus mulled wine and mince pies.

St Mary's Church, Battersea.

ageuk.org.uk/wandsworth

The Nutcracker

Until December 23

A very adult pantomime by Joshua Coley

The Turbine, Nine Elms

Theturbine.com

Mayor's Charity Christmas Variety Gala

December 19, 6.30pm

Enjoy performances from local schools and communities and help raise money for the Mayor of Wandsworth's charities – The Katherine Low Settlement, Black Minds Matter and Keeping Families Together.

Search for Mayor's Charity Christmas Variety Gala on Eventbrite

Christmas Day Lunch for the elderly

The Rotary Club of Battersea Park holds a Christmas Day lunch in a marquee in Battersea Park for older people who would be alone. It is completely free for guests, so donations are welcome.

rotarychristmasday.org





Christmas Tree Festival

Saturday December 8, 4pm-6.30pm

More than 25 trees sponsored and decorated by local organisations, clubs and families plus market stalls, mulled wine, minced pies, children's activities and even a visit from Santa. Tickets £2.

St Mary Magdalen Church,
Wandsworth Common

Black and Ethical Gift Market
December 16, 2pm-7pm

Handmade gifts from talented Wandsworth artists and makers
York Gardens Library

As part of the African Fashion & Textiles Experience

BLACK & ETHICAL GIFT MARKET

AN EXCLUSIVE CRAFT & AND MAKERS MARKET OFFERING A CURATED SELECTION OF HANDMADE WITH LOVE GIFTS FROM TALENTED WANDSWORTH-BASED BLACK-OWNED MAKERS, ARTISTS & BRANDS SUPPORTING LOCAL DEVELOPMENT IN AFRICA

DEC 16 2-7.30PM

YORK GARDENS LIBRARY

FMI AND STALLS ENQUIRY CONTACT: FEEUHSSI@GMAIL.COM

Organoke Christmas Extravaganza

December 13, 7.30pm

The mighty BAC organ will be cranked up to deliver a singalong parade of Christmas hits.

bac.org.uk/whats-on/organoke-christmas-extravaganza





**Nine Elms Arts Ministry presents
'Follow the Star' – A Community Christmas Art Studio**

Until January 5

Get creative alongside local artists at free festive workshops, art experiences and events at Battersea's very own 'Community Christmas Art Studio' at Art'otel – including creating a giant Christmas mural with artist Adalberto Lonardi.

nineelmsartsministry.org



Robin Hood and Babes in the Wood

January 19-28

Robin Hood and his merry men set out to defeat the Sheriff of Nottingham and rescue the Babes from a desperate fate. Pantomime fun from the New Stagers.

St Anne' Church Hall, SW18
newstagers.co.uk



All You Need is Peace, Love and Flower to the People Music Tour

December 15, 6pm-8.30pm

A special festive edition of the magical musical history tour of Planet Tooting.

Summerstown182.wordpress.com

Putney Music

Meets fortnightly from September to April

Founded in 1950, Putney Music is a society of music lovers where members and visitors can meet internationally-renowned musicians in an informal setting. Guests include producers, broadcasters, critics and writers as well as performers. New members are welcome.

Speakers in January include Paul Hughes, until recently Director of the BBC Symphony Orchestra and Chorus, and Andrew Nesthingha, Master of Ceremonies at Westminster Abbey.

putneymusic.org.uk

Celebrating Wandsworth's Sheroes

Ongoing

View portraits celebrating some of the borough's notable African-Caribbean women in the fields of business, community and sport. The exhibition will be shown alongside Windrush Elders - striking portraits and stories of migration and forging a new life in the UK.

Wandsworth Library



Date:
Every Wednesday 2pm-4pm

Location:
Community Lounge
Balham Baptist Church
21 Ramsden Road, Balham, SW12 8QX

Guests will need to arrange their own transportation.

To reserve your place please call:
07949874838
or email
kemi.browne@homeinstead.co.uk

Sunflower café

Every Wednesday, 2pm-4pm

The Sunflower Cafe is a free and friendly informal group for over 65s and their carers to enjoy tea, cakes and social activities. It is not limited to people with dementia, although they are welcome.

**Community Lounge,
Balham Baptist Church,
21 Ramsden Road.**

Call 07949 874838 or email kemi.browne@homeinstead.co.uk to reserve your place.

Join our
adventure
and book
here before
we sell out!



PETER PAN THE PANTO

December
16th – 23rd
Wandsworth Civic Suite

Tickets
available from
£11 + fees

Get in touch:
theatre@enablelc.org
whatsonwandsworth.com/peter-pan-the-panto



In partnership with

enable.

For happy, healthier communities.
Not for profit.

Doing it online

Using our website helps keep your council tax bills low

Report a waste problem

wandsworth.gov.uk/waste

Request a housing repair

wandsworth.gov.uk/housingonline

Search planning applications

wandsworth.gov.uk/planningregister

Report a street problem

wandsworth.gov.uk/streets

Apply for a school place

eadmissions.org.uk

Book an MOT

wandsworth.gov.uk/MOT

Report noise and nuisances

wandsworth.gov.uk/noise

Apply or renew a parking permit

wandsworth.gov.uk/parkingpermits

Report graffiti for removal

wandsworth.gov.uk/graffiti

Report an abandoned vehicle

wandsworth.gov.uk/abandonedvehicles

Tell us if you are moving in or out of Wandsworth

wandsworth.gov.uk/MIMO

Enquire about your housing options

wandsworth.gov.uk/housingoptions

Pay it online

It's now easier to pay online at wandsworth.gov.uk/payments

Pay your council tax

wandsworth.gov.uk/paycounciltax

Pay a parking fine

wandsworth.gov.uk/parking/payment

Pay your rent

wandsworth.gov.uk/rents

Pay for a marriage or civil partnership ceremony

wandsworth.gov.uk/ceremonypayment

Pay your business rates

wandsworth.gov.uk/paybusinessrates

Pay a waste or littering penalty

wandsworth.gov.uk/waste-enforcement

Talk to us online

weekly e-newsletter

wandsworth.gov.uk/enews



facebook.com/wandsworth.council



[@wandbc](https://twitter.com/wandbc)



instagram.com/wandsworth_council

My Account

Create an account and you will only have to sign in once to access the main council services.

wandsworth.gov.uk/myaccount

Other contacts at the council

Adult Social Services

(020) 8871 7707

Births, Deaths, Marriages and Voting Hotline

(020) 8871 6120

Early Years and Childcare Hotline including Family Information Service and After School and Holiday Play Centre bookings

(020) 8871 7899

Environmental Services

including noise, pest control, private housing and licensing
(020) 8871 6127

Finance Hotline including benefits, council tax, rents and business rates
(020) 8871 8081

Housing Hotline including housing management and repairs, service charges, home

ownership, homelessness and housing advice

(020) 8871 6161

Parking and Streets Hotline including concessionary travel, blue badges, MOTs, highways and skip licensing and bay suspensions

(020) 8871 8871

Planning and Building Control hotline including Community Infrastructure Levy (CIL), land searches and street naming and numbering

(020) 8871 7620

Schools and Admissions

(020) 8871 7316

Waste Hotline including rubbish, recycling and litter
(020) 8871 8558

180+ tonnes of trees composted
into natural fertiliser

Christmas tree collections from **Monday 8 January**

**Put your real Christmas
tree out for collection**
on your usual collection day from
Monday 8 January 2024

Your tree will be collected on the
same day as your rubbish and
recycling, but in a different vehicle.

Christmas & New Year collection dates

Don't forget your rubbish and recycling
collection day changes over Christmas due to
bank holidays. It will be a day later than normal.
Read more on page 16.

**Recycle
Right**

Helping you do the right
thing with your recycling



[wandsworth.gov.uk/christmas](https://www.wandsworth.gov.uk/christmas)

