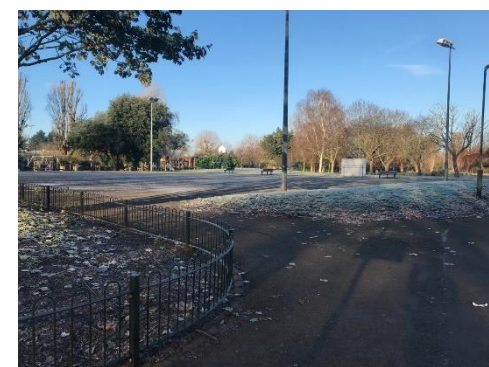


# Garratt Park Management Plan

**Garratt Park is a much-loved historical park providing local residents with a tremendous space for family playtime, community engagement, sports including basketball, football, cycling in addition to gentle exercise whilst also offering a tranquil space to enjoy and relax in nature away from the bustle of Earlsfield.**

This plan is intended to provide Garratt Park with its best chance to continue meeting the needs of the local community in addition to achieving the highest horticultural and environmental standards. Wandsworth has one of the highest numbers of council-owned greenspaces in inner London, culminating in over 300 hectares of public greenspace. Each greenspace has its own unique character, and each space provides the opportunity for a range of different activities for people and opportunities for biodiversity. The Green Flag Award scheme recognises and rewards well managed parks and greenspaces, setting the benchmark standard for the management of recreational outdoor spaces across the United Kingdom and the world. Wandsworth Borough Council wants each of the five big greenspaces to gain and keep their prestigious Green Flag Awards. Whilst Battersea Park, Wandsworth Park, King Georges Park, Wandsworth and Tooting Common have Green Flag status, the aim is, from 2032, each one of the borough's smaller greenspaces will be brought up to Green Flag level. This management plan for Garratt Park sets out proposed plans for this park over the next 10 years.



# Key Action points

**Park management and contractor activities** - Replace the existing surface with a new polymeric surface and include new basketball nets and retractable netball nets. Reposition table tennis facility and add another north. Install improved specific directional signage and wayfinding from closest point in Wandsworth to Wimbledon Stadium. Renovate existing and redesign new all-year round planting scheme in main entrance bed. Consider ways to make the pedestrian gate more prominent and welcoming. Add more benches / picnic benches at the far end of the pitch area to allow supporters to sit and watch if they want to.

**Biodiversity activities** - Define and improve decorative beds and shrubberies to offer increased opportunities for wildlife.

**Arboriculture activities** - Thin and lift canopy of field maples in central bed close to allotment gate to allow for wider scope of planting. Move table tennis facility or fallen tree to allow access for table tennis players.

**Community engagement activities** - Identify stakeholder groups; provide opportunities for volunteering; training and supporting local wildlife recorders; engagement activities to encourage stewardship, and environmental education programmes.

**Development and funding activities** - Explore options to widen use of cycle track areas, support cyclists in borough with further cycle facilities. Consider providing informal space for non-sports community events and social get-togethers

## Contents

### Action Plan

A Welcoming Place.....	3
Healthy, Safe and Secure .....	7
Well Maintained and Clean .....	9
Environmental Management.....	12
Biodiversity, Landscape and Heritage .....	14
Community Involvement.....	14
Marketing and Communication.....	16

Management Plan Details.....17  
 Site Details.....18  
 Site Maps and Photos .....25  
 Responsibilities.....29

## Action Plan

Green Flag Category		What we already have / do	What improvements are needed	Current plans to deliver improvements	Timescale / costs / partners
A Welcoming Place	Welcome	Ornamental gates at entrances give good views into the Park.  The path work network is well defined.	Gates are not of same design and so lack a sense of continuity at each approach.	Consider how to incorporate features that provide some continuity with Park entrances.	Ongoing Enable Parks Team Continental,  £x
	Siward Road Entrance	This is a decoratively designed pedestrian gate with an adjacent vehicular service	The access road leading to the vehicular gate is more prominent than the pedestrian gate. As the vehicular gates are kept locked when not in use, the	Consider ways to make the pedestrian gate more prominent and welcoming.  Main entrance shrub bed to be renovated	Ongoing Enable Parks Team,  £x

		<p>gate of similar design.</p> <p>An ornamental shrub bed gives a pleasant view into the Park, a substantial tree lined grassy field to the south and the basketball to the north.</p>	<p>pedestrian entrance to visitors is ambiguous.</p> <p>The shrub bed is lacking in interest and there are bare patches.</p>	<p>and redesigned to include new all-year round planting scheme and installation of knee-high railing to make the entrance more visually appealing.</p>	
	Maskell Road Entrance	<p>This is a pedestrian gate flanked with railings.</p> <p>There is a pleasant view across field along tree lined pathway</p>	<p>This gate is less decorative than the main entrance.</p>		<p>Ongoing Enable Parks Team Continental,</p> <p>£xx</p>
	Weybourne Road Entrance	<p>This is a pedestrian gate flanked by metal topped decorative columns.</p> <p>There is an enticing view of</p>	<p>The gate design is different to that of the main entrance on Seward Street and Maskell Road.</p>		<p>Ongoing Enable Continental, Parks Team,</p> <p>£xx</p>

		the cycle track facilities.			
	Good and safe access	<p>Access is easy for visitors via both gates.</p> <p>The egress at both entrances are maintained to ensure site is safe to users.</p>			<p>Ongoing Enable Parks Team Continental,,</p> <p>£xx</p>
	Signage, Interpretation and Waymarking	<p>There is effective, standard WBC welcome signage into Garratt Park at both entrances.</p>	<p>The welcome sign at site entrances are standard WBC signs that do not provide detail of heritage and biodiversity of the Park.</p> <p>There is limited waymarking in surrounding area to Garratt Park and between Garratt Park other local greenspaces.</p>	<p>Audit of signage to be carried out as a service plan topic followed by discussion with WBC to action improved signage across all sites.</p> <p>Undertake asset assessment to ensure the signs remain fit for purpose and informative.</p> <p>Improve directional signage in the surrounding</p>	<p>£xx Ad hoc weekly inspections Enable Parks Team, Wimbledon Stadium, WBC, Highways</p>

				<p>neighbourhood to the Park.</p> <p>Installation of improved specific directional signage and wayfinding from closest point in Wandsworth to Wimbledon Stadium is being delivered as part of current S106 funded project.</p>	
	Equal access for all	<p>Access into and around the Park is good for those with good mobility</p> <p>The free to use playground for toddlers and juniors, has recently been redesigned and refurbished to improve accessibility for all.</p>		<p>Carry out Accessibility Audit for site to ensure all points of the Park are currently accessible.</p>	<p>Ongoing Enable, WBC, £xxxx</p>

<p>Healthy, Safe and Secure</p>	<p>Appropriate Provision of Quality Facilities and Activities</p>	<p>Money has been allocated via S106 funding from Wimbledon Stadium to refurbishment of the ball court and installation of an outdoor gym.</p> <p>There is a table tennis facility adjacent to children's play area.</p>	<p>The surface of the existing ball court is rough and uneven with barely visible line markings.</p> <p>The outdoor gym needs to be located away from the ball court area to avoid conflict with balls. Proposed siting conflicts with the current position of table tennis.</p> <p>There are no public conveniences at Garratt Park.</p> <p>There is no cycle parking at Garratt Park</p>	<p>Replace the existing surface with a new polymeric surface and include new basketball nets and retractable netball nets.</p> <p>Reposition table tennis facility and add another north of new outdoor gym.</p> <p>Install an outdoor gym and safety surfacing to the area north of the playground where the table tennis table is currently located.</p> <p>Wandsworth Borough Council and Enable are leading on a project to convert the changing room building located at main entrance to an</p>	<p>£100,000</p> <p>Enable, WBC, Wimbledon Stadium</p>
---------------------------------	---	--	--	---	---

				accessible public toilet block Install cycle hoops	
Safe equipment and facilities	Regular routine inspections specifically address whether equipment, and facilities in Garratt Park are safe.  Playground facilities are visually inspected by Enable's Playground Officer biweekly for damage or vandalism. The playground is also independently inspected 3 times a year.				The last playground inspection found all equipment to be in good condition and areas reported as low risk.
Personal security	Reported issues from Parks and Events Police are regularly reviewed and acted upon  Issues that cause fear for different members of the community – for example, inclusivity, racism, drugs, bullying, vandalism, and vagrancy are regularly reviewed.				Ongoing Enable Parks Team Parks Police  £x
Control of dogs/ dog fouling	Responsible dog ownership is encouraged through Education, provision and maintenance and emptying of dog bins combined with active enforcement by Parks Police	This green space is regularly used by dog owners and is sometimes found to be fouled.		Extend 'Paw Patrol' pop up events schedule to Garratt Park More information can be found here: <a href="#">Dogs in Parks and Open Spaces Information</a>	Ongoing Enable Parks Team Parks Police  £x
Control of other "issues	Garratt Park is governed by Wandsworth Borough Council Parks Byelaws				Ongoing



		<a href="#">Wandsworth Council Parks Bye laws</a> More information can be found <a href="#">Public Spaces Protection Order leaflet (wandsworth.gov.uk)</a>			Enable Parks Team  Parks Police  £x	
Well Maintained and Clean	Litter and Waste Management		The litter bins in Garratt Park are emptied daily by 10am and are not permitted to remain full for more than 24 hours. Litter picking is also carried out across the gardens.			Ongoing Enable Parks Team  £x
	Horticultural Maintenance		General horticultural maintenance duties are carried out by contracted grounds people with members of the Parks Team qualified in recognised horticultural skills.			Ongoing Enable Parks Team  £x
		Decorative Beds	The traditionally laid out decorative beds that form the cycle track route are partially planted.	These beds have historically been affected by trampling and poor soil structure due to compaction and tree roots.	Installation of knee-high hoop fencing to protect plants.  A more balanced mix of resilient planting is planned.  Improve soil structure with the addition of mulch in the winter months.	Spring 2022-Autumn 2023  Enable Parks Team  £x
		Shrubberies and Borders	The shrubbery near the main	This shrubbery is unsightly and suffers from trampling by	Replant with sustainable planting of greater year-	Spring 2022-Autumn 2023

			entrance is partially planted.	children retrieving balls from the nearby ballcourt.  There are gaps in this shrubbery which become more prevalent under the trees.	round interest to include plants that prefer a shadier context.  Installation of knee-high railing will protect plants.	Enable Parks Team  £x
	Arboriculture Maintenance	The trees in Garratt Park are inspected by Enable's Tree Team every 3 years and works carried out according to instruction.  Tree cover is good.	2 x poplar trees fell onsite during 2022 storms, one causing damage to play features/ infrastructure and boundary fence line.  One tree is obstructing current access to table tennis facility.  Tree cover in central shrub bed has become heavy and is affecting planting underneath.	The timber from tree fells remains onsite to provide important opportunities for biodiversity.  There are also some tree works due to thin/ lift canopy of field maples in central bed close to allotment gate	Ongoing Enable Parks Team  £x	
	Building and Infrastructure Maintenance	Ad hoc weekly inspections by Enable Parks officers are	Fencing along the boundary line with Garratt Park Allotments is	Feasibility study currently in progress to improve site security with	Summer 2022 Enable Parks Team , WBC,	

		<p>carried out and vandalism damage reported with repairs actioned.</p> <p>Parks Maintenance Contractors inspect the site on a regular basis reporting defects and undertaking any minor repairs needed to facilitate safety and/or return the equipment or area to use or cordoning off area if necessary, as a temporary measure to ensure user safety and to discourage vandalism.</p>	<p>regularly broken through from the park side.</p> <p>There is a lack of seating in field area</p>	<p>repair / installation of new fence.</p> <p>Add more benches / picnic benches at the far end of the pitch area to allow supporters to sit and watch if they want to.</p>	<p>£xxx</p> <p>Summer 2022 Enable Parks Team ,</p> <p>£xx</p>
--	--	---	---	--	---

		<p>Paths are tarmac and in good condition.</p> <p>Metal fencing and gates are in good condition except for along west and north boundary with allotments.</p> <p>Gates are regularly checked to ensure they are kept in good working order.</p> <p>Fencing around playground is in good condition</p> <p>There is seating for 54 in Garratt Park.</p>			
Environmental Management	Managing Environmental Impact	<p>A suite of plans, policies and strategies guide our approach to managing our impact on the environment, including the <a href="#">Wandsworth Environment and Sustainability Strategy</a> Enable's sustainable planting plan, <a href="#">Wandsworth Biodiversity Strategy</a>. and <a href="#">Wandsworth Tree Strategy</a> More information can be found <a href="#">Together on nature - Wandsworth Borough Council</a></p>			<p>Ongoing Enable Parks Team</p> <p>£x</p>

		<p>Additionally, all appointed contractors have agreements in place to ensure that their processes are in accordance with these documents. We constantly review our delivery to ensure it meets these expectations.</p> <p>An organisation wide action plan has also been developed to ensure Enable's operations are in line with Paris Climate Commitments to Net Zero. Using One Planet Living principles developed by WWF and Bioregional, we have set targets, actions and indicators to reduce waste and energy use, improve water and resource efficiency, and work with local communities to reduce the impacts of travel to our sites.</p>	
	Waste Minimisation	All green waste generated on site is taken to Battersea Park Depot where Continental, process the green waste into mulch which is re-used on beds within parks and open spaces across the Borough.	Ongoing Enable Parks Team £x
	Chemical Usage	<p>Unless otherwise specified all weed removal will be performed by manual rather than chemical treatments, e.g., fungicides, herbicides and pesticides must be used strictly in accordance with the manufacturers and Authorised Officer's instructions, and only on specified areas</p> <p>As part of their commitment to safeguarding the environment, the Parks Team is seeking to reduce the number of chemical treatments used in horticultural operations and contractors will be expected to be sensitive to this aim. In general, no chemical treatments will be allowed in ecological areas.</p>	Ongoing Enable Parks Team Continental £x
	Peat Use	Horticultural waste is composted for use as a replacement for peat-based or commercial products when mulching.	Ongoing Enable Parks Team Continental

					£x
	Climate Change Adaption Strategies	Implementing planting schemes that support the objectives of the 2021 Wandsworth Biodiversity Strategy allow greenspaces to support an increased mix of habitats and species for the longer term and help contribute to the significant environmental challenges we currently face.			Ongoing ,Enable Parks Team, Continental £x
Biodiversity, Landscape and Heritage	Management of Natural Features, Wild Fauna and Flora	All new or replacement planting is designed to provide attractive and appropriate visual character, support biodiversity and be resilient to climate change in line with best practice and in accordance with <a href="#">Wandsworth Environment and Sustainability Strategy</a> Enable's sustainable planting plan, <a href="#">Wandsworth Biodiversity Strategy</a> . and <a href="#">Wandsworth Tree Strategy</a> More information can be found <a href="#">Together on nature - Wandsworth Borough Council</a> .			Ongoing Enable Parks Team, Continental £x
	Conservation of Landscape Features				Ongoing Enable Parks Team Continental £x
	Conservation of Buildings and Structures				Ongoing Enable Parks Team Continental £x
Community Involvement	Community Involvement in Management and Development	We collaborate with the community in a wide range of ways to ensure we are responsive to local needs. This includes regular work in partnership with identified stakeholder groups; providing opportunities for volunteering; training and			Ongoing Enable Parks Team, £x

		<p>supporting local wildlife recorders; engagement activities to encourage stewardship, and environmental education programmes.</p> <p>Identify stakeholder groups; provide opportunities for volunteering; training and supporting local wildlife recorders; engagement activities to encourage stewardship, and environmental education programmes.</p>	
	Appropriate Provision for Community	<p>Demographic data is analysed to ensure our provision is targeting the appropriate age ranges. Each total playground refurbishment is informed by site specific consultation process which allow us to understand the types of play experiences the community enjoy and wish to see provided the community to choose between different playground designs so that provision can meet local demand and expectation. The ball court area, table tennis and football pitch encourage good opportunity for social get togethers.</p> <p>We always seek to embed provision for children with disabilities (physical and mental) so that they can play with and alongside their peers. We are mindful that parents and carers have a wide range of ages and abilities and our seating within playgrounds seeks to address this too.</p> <p>Consider providing informal space for non-sports community events and social get-togethers</p>	<p>Ongoing Enable Parks Team, Continental</p> <p>£x</p>
Marketing and Communication	Marketing and Promotion	<p>Events, news, or activities in our greenspaces are publicised on social media platforms</p> <p>We also work with Wandsworth Council to publish information in the quarterly Borough wide newsletter <a href="#">Quarterly Brightside</a></p>	<p>Ongoing Enable Parks Team Continental</p> <p>£x</p>

In partnership with

		and weekly Borough E-Bulletin, <a href="#">Weekly Brightside</a> as well as ensuring that all relevant information is also advertised on their social platforms	
	Appropriate Information Channels	<p>We use (Twitter, Instagram, Facebook) with the handle “enableparks”</p> <p>This allows us to engage with the public, and community groups online and to share information that will engage a broader range of green space users.</p> <p>A range of articles and press releases providing more detailed information about any exciting projects in our green spaces can be found <a href="#">Enable News</a></p> <p>General information about the spaces is also available on Wandsworth Borough Council’s website: <a href="#">Wandsworth Borough Council Parks and Open Spaces</a></p>	<p>Ongoing Enable Parks Team Continental</p> <p>£x</p>
	Appropriate Educational and Interpretation Information		<p>Ongoing Enable Parks Team Continental</p> <p>£x</p>
Implementation of Management Plan		4 x full team review sessions are delivered each year and fed into an impact report at the end of each session.	<p>Ongoing Enable Parks Team Continental</p>



		<p>A community suggestion file is also kept on record and will be fed into the plan when appropriate.</p> <p>Annual Impact reports will be made available each year on our website with the first report due to be published December 2023.</p>	£x
--	--	---	----

## Management Plan Details

Site Name:	Garratt Park
Plan author and approver:	Alice Henry and Valerie Selby
Previous Plans:	<a href="#">Garratt Park Management Plan 2007 to 2012 (Wandsworth Borough Council)</a>
Plan Dates:	Duration of plan – Autumn 2022 – Autumn 2032
Consultation:	Where Wandsworth Borough Council capital has been invested, WBC processes will be followed. Where other capital is invested WBC processes will also be followed however it is likely amendments may be a requirement to meet individual funder needs.
Aims of the plan:	To guide and inform on reaching criteria on Green Flag and London in Bloom awards, To encourage clear communication with stakeholders, To guide maintenance priorities, To guide funding investment and site improvements
Plan review and Monitoring:	Greenspace management is a continuous process that takes account of issues that arise. This Management and Maintenance Plan is a “live document” which will be updated dynamically throughout the year. As the plan is actively implemented, updates will be

In partnership with

	<p>systematically reported by the Enable's Parks Team. By constantly reviewing and monitoring, the Parks Team will ensure green spaces remain relevant to users' needs and are cared for and respected by all. An Annual Actions Summary will be produced each year of the plan outlining key achievements in each year of the Plan.</p>
--	--

## Site Details

<p><b>Titles, Deeds, Legislations and Destinations:</b></p>	<p>This site is owned By Wandsworth Borough Council</p> <p>It is in the Wandsworth Common Ward. Elected members for this area until May 2026 are: Councillor Rosemary Birchall, Councillor Angela Graham and Councillor Peter Graham.</p> <p>Garratt Park is bounded to the northeast by the rear of Weybourne Street; to the east by Siward Road; to the south by the rear of Rosemary Road and to the west by Garratt Park Allotments. The grid reference of the bottom southwest corner of the site is TQ 258 721 and the area of the site totals 3.6Ha (7.5 acres)</p> <p>Designations: Park &amp; Open Space</p> <p>The council has adopted planning policies which aim to protect and enhance public and private open space and green infrastructure in the borough. These policies are the basis for promoting and controlling development in the borough. The adopted Local Development Plan comprises the Core Strategy (2016), the Development Management Policies Document (2016), the Site-Specific Allocations Document (2016), the Employment and Industry Document (2018), the Policies Map (2016) and the Policies Map Changes Document: Employment and Industry Review (2017).</p> <p>Garratt Park has no official current designation as a place of importance for wildlife however the Borough of Wandsworth is popular with several protected and priority</p>
---	--

	<p>species and all its greenspaces including Garratt Park offer the opportunity for increasing special habitats either for species to commute through or make their home.</p>
<p>Site Description:</p>	<p>Garratt Park is level and split into two distinct halves; one a more formal, traditional layout and the other an open grassed area. The space is wide and open whilst including a variety of spectacular trees including highly decorative <i>Betula Pendula</i> and a handsome line of established Poplars. Within the formal section there are a range of features including children's play equipment, table-tennis, cycle circulation paths and a floodlit multi-games area. These areas are interspersed with lawn areas and shrub beds. In the informal area there are scattered trees amongst mown amenity grass with a football pitch marked out during the winter season.</p> <p>The main entrance into the park is via a quiet side street, off the busy Garratt Lane. This entrance from Siward Road brings you into the park halfway down its length and provides the divide between the formal and informal areas. This gate is ornamental pedestrian gate with a twin vehicular service gate, flanked either side with a low brick wall. There is a second, also ornamental, pedestrian gate into the park from Weybourne Street. The park can also be accessed from Maskell Road via the housing development.</p> <p>The park is bordered to the west and north by Garratt Park Allotments. Iron railings topped with a chain link fence and a line of mature poplar trees demarcate this boundary. The east of the park is bordered by a public carparking area and properties on the eastern boundary, Siward Rd, Steerforth Street and Maskell Road have good views over the Park. The southern end of the park is neighboured by Garratt Business Park.</p> <p>Within Garratt Park, there is pedestrian gate, on the western boundary giving access to ploholders only into the Garratt Park Allotment site. There is also access from the eastern boundary of the park into a children's nursery.</p> <p>Garratt Park has one of the few traditionally laid out gardens with knee high hoop fenced shrub beds. This area has been designed and demarcated as a mini cycle route intended for cycle training for families with young children, with miniature versions of road signs.</p>

There is another unique off road cycling themed facility in the park. This takes the form of a purposely designed cycle track surfaced with compacted gravel, giving opportunity for further cycle practice and also by remote controlled toy car enthusiasts.

In addition to the cycle track shrub beds, there is a further central shrub bed on the approach into the park, this is also demarcated with knee high fencing.

Garratt Park was opened as a public park 'for children's recreation' in May 1906. It was laid out in the grounds of the former Garratt House, demolished in 1890. The village of Garratt was a hamlet in the southern part of the parish of Wandsworth and is mentioned in the records of Merton Priory as 'tenement of the Garrett, manor of Durnsford' in 1538.

How to find Garratt Park

By bus – The closest bus stop is on Garratt Lane, it takes 1 minute to walk from the bus stop to Garratt Park.

By tube- the closest tube station is Wimbledon Park Underground Station, it takes 27 minutes to walk from the station to Garratt Park.

By train – the closest train station is Earlsfield Station, it takes 9 minutes to walk from the station to Garratt Park.

By bicycle – the closest national cycle network route is the Wandle Trail, it takes 2 minutes to cycle from the Wandle Trail to Garratt Park. The closest TFL bike docking station is on Neville Gill Close, it takes 9 mins to cycle to Garratt Park.

By car -Garratt Park has no dedicated car parking on site, although there is limited pay and display parking available nearby.

Opening Times – Garratt Park is not locked at any time.

**If you have any issues gaining access or exiting, please call Parks Police on 07500969442**

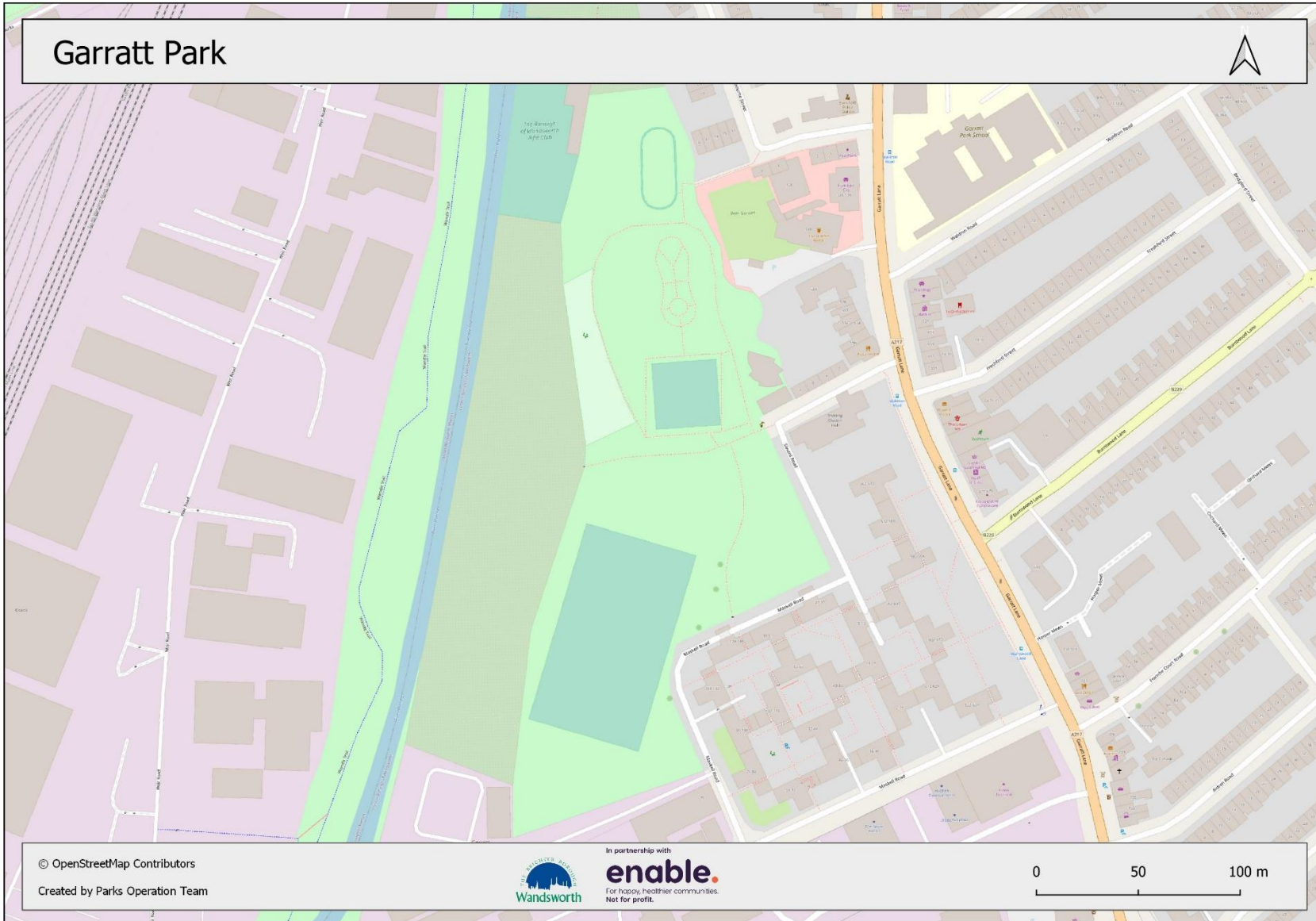
Current main uses and users:	Garratt Park is a popular park with local residents many of whom want to protect and improve the space for their use and those of the wider community. Over 100 allotment holders walk through the park regularly throughout the year to access their plots. Garratt Park is a popular destination for people using the Wandle Trail that runs close by.
Playground:	The free to use playground for toddlers and juniors in the west of the park has been recently developed in 2021 to include natural play features.
Grassy Area:	The grassy area in formal and winter football pitch in the less formal area are well used by dog walkers, picnicking and by various football teams for practice and games.
Multi-Use Games Area and Cycle track facilities	<p>The multi-use games area is well used, particularly by basketball and table tennis players. A culture of basketball has developed at the ball court over the last 30 years with young people coming from all over Wandsworth to play at the court. The hard surfaced games area is popular in the winter evenings on account of it being floodlit</p> <p>The cycle track features are used by young families and remote-control toy car enthusiasts</p>

## Site Photos and Maps

			
<p>Maskell Road Entrance</p>	<p>Children's Play Area</p>	<p>Tree felled and retained for biodiversity</p>	<p>View from Maskell Road Entrance</p>
			

View across field	Water Bottle filling Station		
-------------------	------------------------------	--	--

# Garratt Park



© OpenStreetMap Contributors  
Created by Parks Operation Team



In partnership with  
**enable.**  
For happy, healthier communities.  
Not for profit.

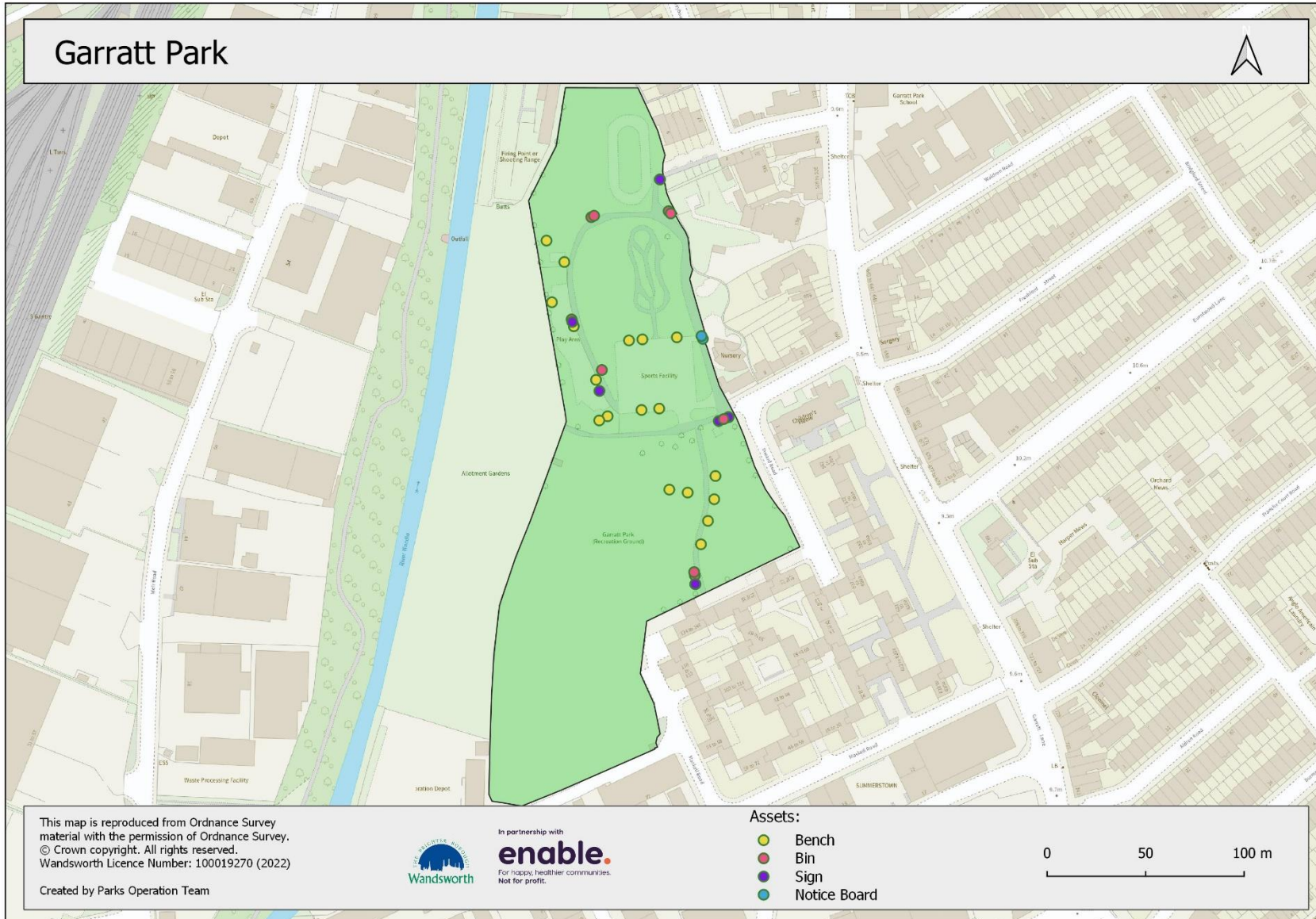
0 50 100 m



**enable.**  
For happy, healthier communities.  
Not for profit.



# Garratt Park



This map is reproduced from Ordnance Survey material with the permission of Ordnance Survey. © Crown copyright. All rights reserved. Wandsworth Licence Number: 100019270 (2022)

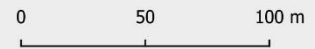
Created by Parks Operation Team



In partnership with  
**enable.**  
For happy, healthier communities.  
Not for profit.

### Assets:

- Bench
- Bin
- Sign
- Notice Board



# Responsibilities

Who is involved with looking after this place?

The Enable Parks team is a passionate group of people, who work together to maintain and improve Wandsworth Council's parks, commons, playgrounds, allotments and other greenspaces. Broadly split into three specialist teams: the trees team, the operations team and the parks development team, we work to deliver sustainable planting and urban greening, following both the borough's Biodiversity Strategy and Tree Policy. We are keen to recognise, value, manage and enhance the biodiversity and plant heritage of our landscapes - through these measures, we are contributing to a healthy planet and the wellbeing of our communities.

**Enable: look after all Wandsworth's public green spaces including Garratt Park by ensuring the horticultural fabric, heritage, biodiversity and infrastructure of each site are maintained and improved.**

The Parks Operations Team look after over 32 public green spaces in Wandsworth. Each greenspace, including Coronation Gardens, is managed according to the action plan within this document and in addition is checked regularly by Enable's Park Officers who report and act upon anything urgent in a timely manner. Please help them by reporting any concerns or suggestions regarding the upkeep of these places including Garratt Park by emailing [parks@enablelc.org](mailto:parks@enablelc.org) or by calling The Enable Parks Office 0203 959 0060

The Parks Team process all enquires relating to Wandsworth's greenspaces monitoring the grounds maintenance, sports pitches and arboriculture contracts, providing advice to Wandsworth Council on its responsibilities, with respect to legislation relating to biodiversity, and on best practice in ecological maintenance.

The Parks team work also collaboratively with Enable's other areas including Health and Wellbeing, Sports and Leisure, Bereavement, Events, Filming, Putney School of Art and Public Halls.

**The Parks Enable Parks Team have partnered with:**

[Continental Landscapes](#) who are contracted and instructed by Enable to undertake horticultural maintenance, a sports pitch booking service, maintenance of buildings furniture, fixtures and fittings, indoor building cleaning duties, litter picking, outside sweeping and clearance duties, ecological maintenance tasks, grounds maintenance and provision of sports facilities, hard surfaces, weed control, care of paths and surfaces, event preparation and staging. They oversee installation of temporary fencing where it may be required for health and safety reasons or when required to protect/recover certain areas from excessive footfall. They also install new planting and restoration schemes managed by the Parks Team.

Please only contact Continental Landscapes for information enquiries regarding sports pitch and sports facilities. 0208 767 830 [Wandsworthsports@continental-landscapes.co.uk](mailto:Wandsworthsports@continental-landscapes.co.uk)

All general parks and greenspaces enquiries and feedback is best directed to the Enable Parks.

**Enable: looks after all and are responsible for the care and wellbeing of all trees in Wandsworth's public greenspaces including Garratt Park.**

The Enable Tree team look after more than 60,000 trees in its parks, commons and public green spaces. Each Greenspace, including Garratt Park, has a dedicated and experienced arboriculture officer who looks after the trees here and makes inspections on a three-year cycle which ensures that all trees are inspected regularly. The officer can assess a tree and identify whether works are of an urgent or non-urgent type. General tree health is considered as well as the condition and colour of the leaves, branches, upper crown and the trunk. Once all this information has been gathered a schedule of work is produced and any remedial works are actioned. Enable's Tree Team also runs an out-of-hour service for

dealing with all dangerous or hazardous trees in addition to monitoring and managing any outbreaks of tree pests and diseases. Please help them by reporting problems, such as vandalism or damage to trees in Garratt Park by emailing [trees@enablelc.org](mailto:trees@enablelc.org) or by calling 0203 959 0070.

**The Enable Tree Team have partnered with:**

[KPS](#) who carry out all tree maintenance works in Garratt Park as instructed by Enable's Tree Team.

**Enable: look after Wandsworth's public greenspaces by supporting and working closely with local stakeholders, volunteers and 'Friends of' groups who share the same aims of providing and making improvements to high quality, well managed and inclusive greenspaces.**

**Enable: look after all Wandsworth's public green spaces including Garratt Park by ensuring they remain safe and welcoming places for everyone to visit.**

Enable's Parks Operation Teams and Grounds Maintenance teams make regular visits to this place checking acting on any site infrastructure issues and anti – social behaviour. The Parks Team respond to enquiries to do with any aspect regarding over 50 public greenspaces in Wandsworth and can be reached by emailing [parks@enablelc.org](mailto:parks@enablelc.org) or calling the Enable Parks Office on 0203 959 0060. The Parks office is open 9am –5pm weekdays.

**Enable's Parks Team have partnered with:**

[The Parks Police](#) whose team routinely patrol these green spaces, enforcing byelaws and overseeing dog control, public spaces protection orders and policing events. The Parks Police provide a service 365 days a year and officers are trained in legal and enforcement processes, conflict resolution, personal safety training and first aid. In total The Parks Police look after over 50 public green spaces in Wandsworth. Please help them by reporting any anti- social behaviour including dog related incidents in Garratt Park by

emailing [parkspolice@richmondandwandsworth.gov.uk](mailto:parkspolice@richmondandwandsworth.gov.uk) or by calling 020 8871 7532, their mobile patrol unit can also be reached by calling 07500 959442.

Call 999 if:

**A serious offence is in progress or has just been committed**

**Someone is in immediate danger or harm**

**Property is in danger of being damaged**

**A serious disruption to the public is likely**

**Other Partnerships** All work that does not fall under these contracts or within the remit of any official 'Friend's of' group is managed by Enable in partnership with Wandsworth Council and carried out under additional works programmes, by order, with the main outside contractors depending on the scope of the work entailed.



## Continental Landscapes



In partnership with  
**enable.**  
For happy, healthier communities.  
Not for profit.