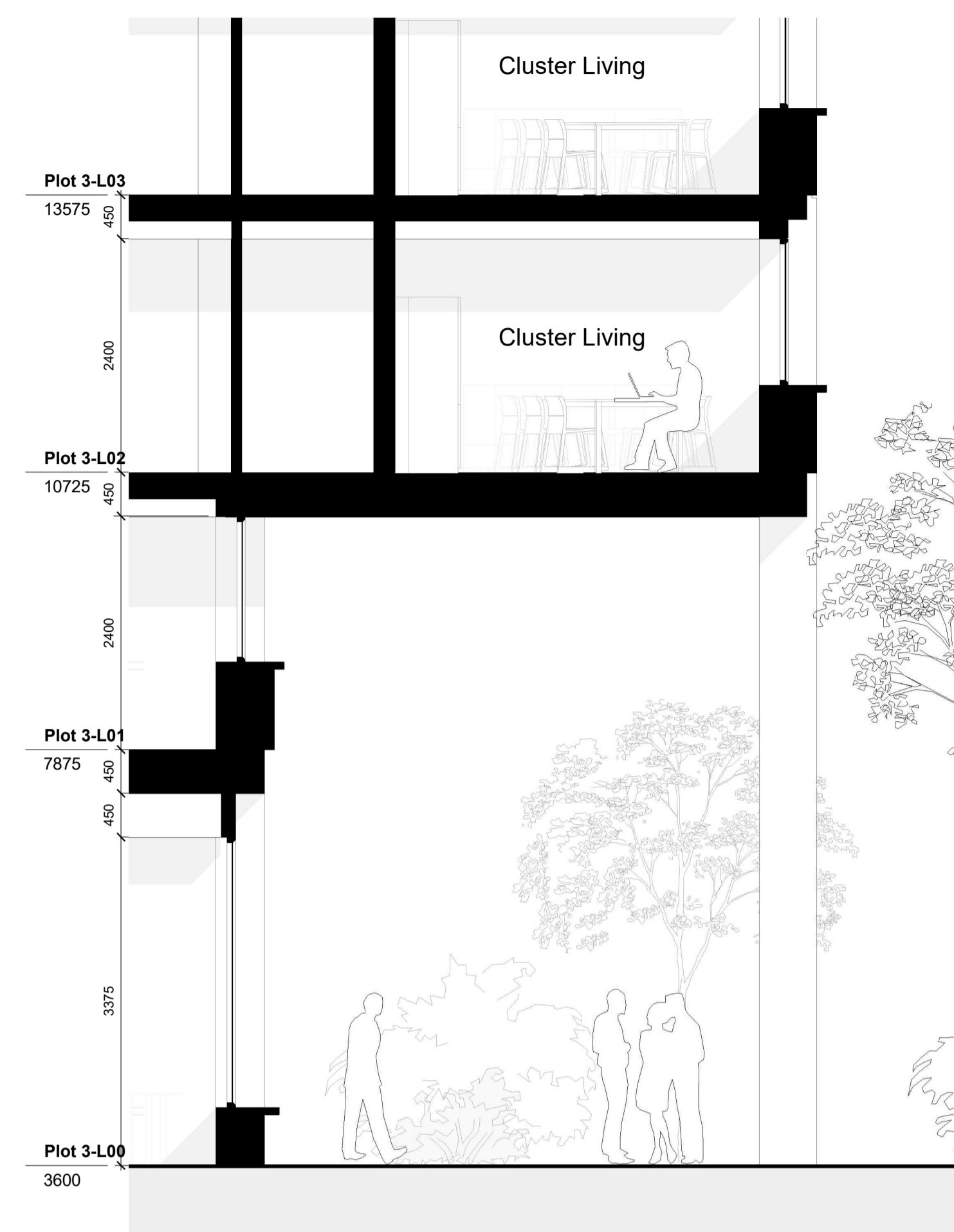


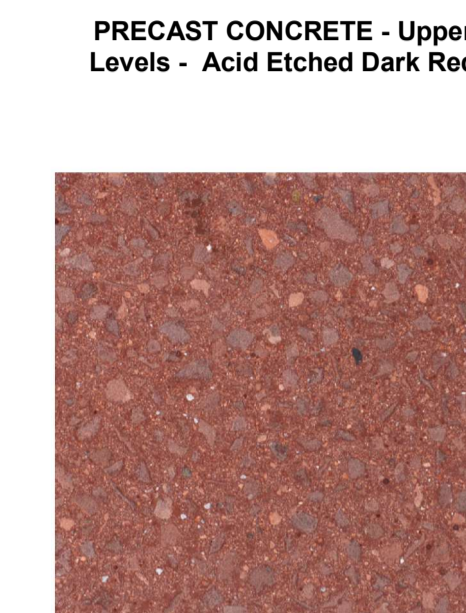
Dimensions are not to be scaled from on this document. Notify Howells of discrepancies affecting the information shown. This drawing is copyright of Howells, the trading name of Glenn Howells Architects Limited.



Bay Study Plot 03 - North West Entrance Elevation
1 : 50



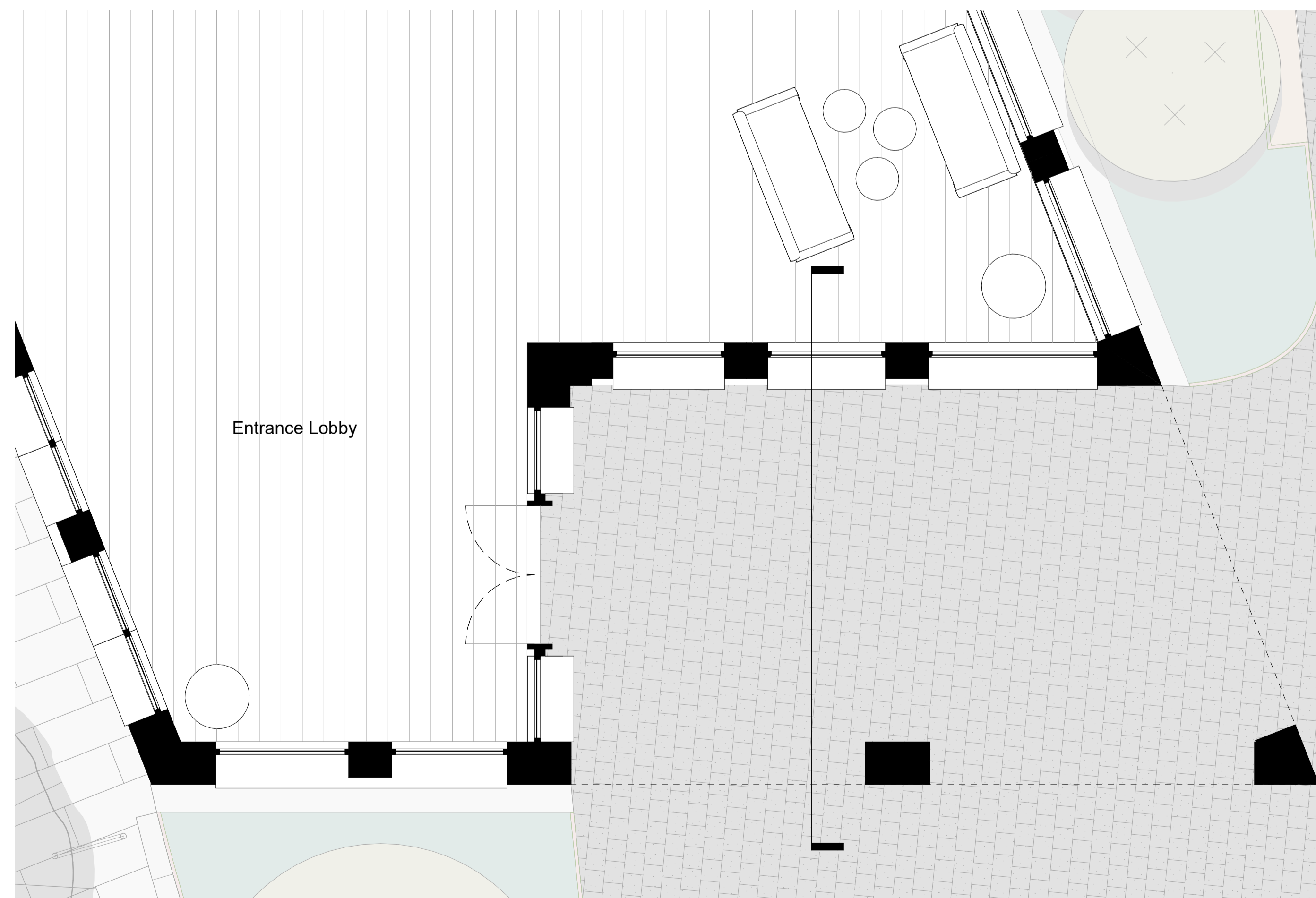
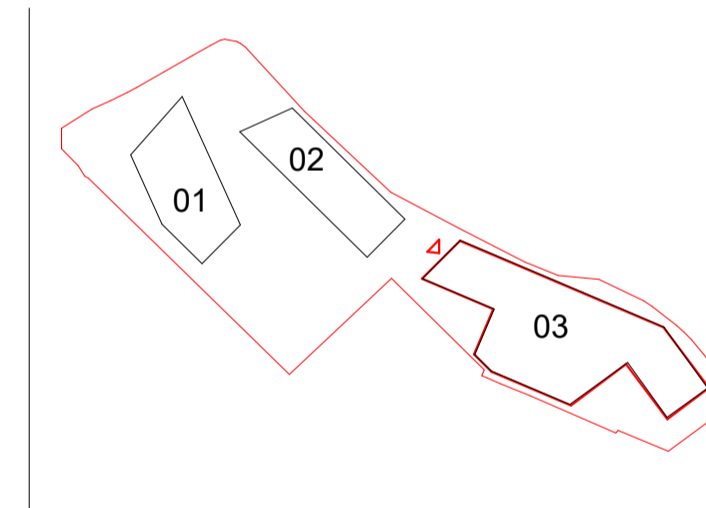
Bay Study Plot 03 - North West Entrance Section
1 : 50



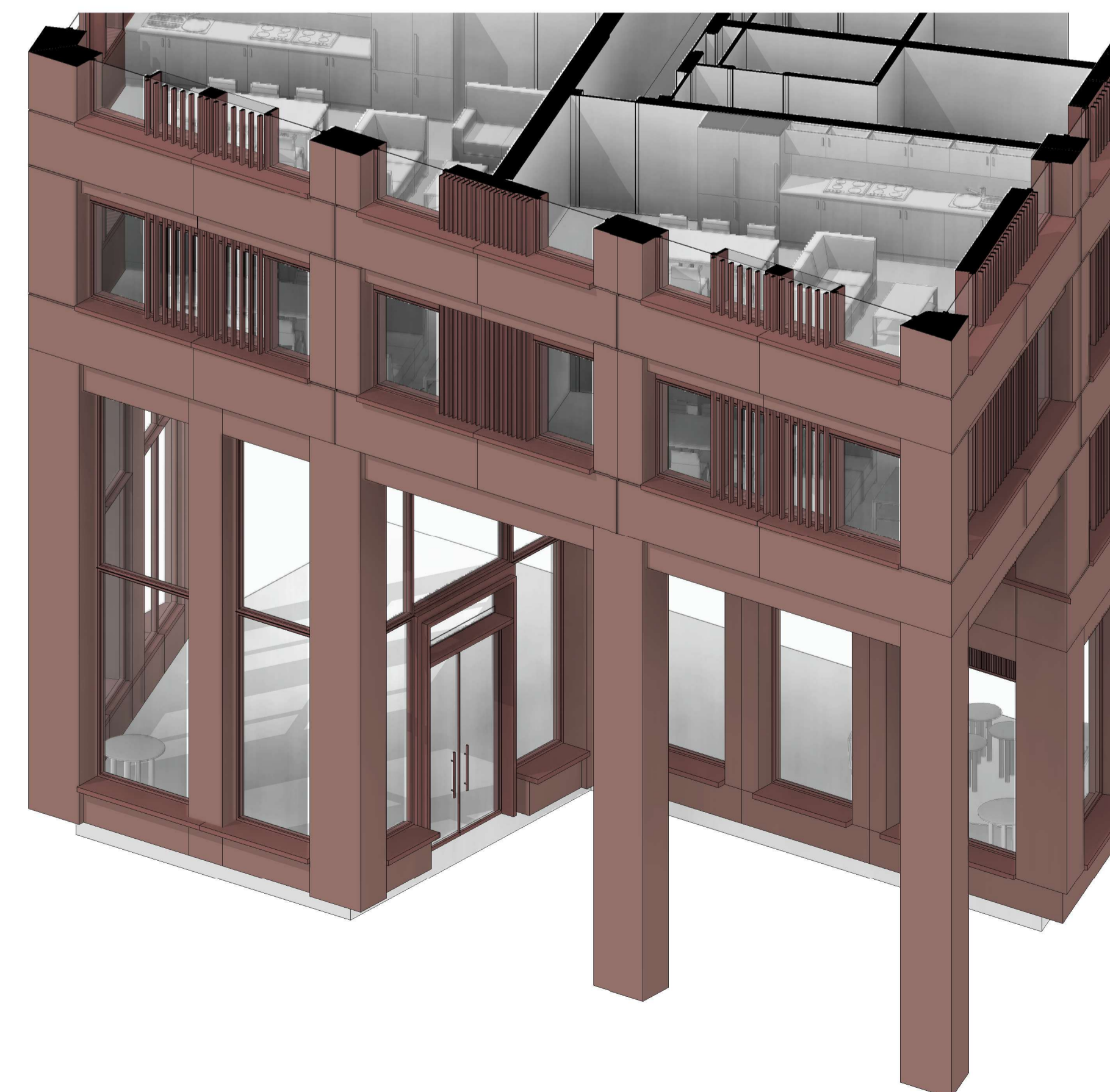
MATERIAL KEY

- 01 Dark Red Grit-Blasted Precast Concrete with Exposed Aggregates
- 02 Dark Red Acid-Etched Precast Concrete
- 03 Dark Red Acid Etched Precast Concrete Upstand with Vertical Ribbed Texture
- 04 Oxide Red PPC Aluminium Plant Screen with Vertical Ribbed Texture
- 05 Oxide Red PPC Aluminium Door
- 06 Oxide Red PPC Aluminium Frame Fixed Window
- 07 Oxide Red PPC Aluminium Frame Fixed Window with Operable Side Vent Panel
- 08 Oxide Red PPC Aluminium Frame Projecting Window with Shadow Gap Reveal
- 09 Oxide Red PPC Aluminium Solid Panel with Vertical Fins

Location:



Bay Study Plot 03 - North West Entrance Plan
1 : 50



Bay Study Plot 03 - North West Entrance 3D

Status:

PLANNING

Revision History:

- P01 Issued for Planning
- P02 Issued for Planning
- P03 Issued for Planning

Checked: RK

- 29/04/2022 JA
- 18/04/2023 SI
- 04/12/2024 AS

Project & Client:

41-59 Battersea Park Road working with Watkin Jones

File Title:

Plot 03 - Bay Study (Sheet 1 of 4)

Scale: As indicated @A1

File ID:

2278-GHA-03-ZZ-DR-A-21110

Revision:

P03