

Brightside

Issue 201 October 2023

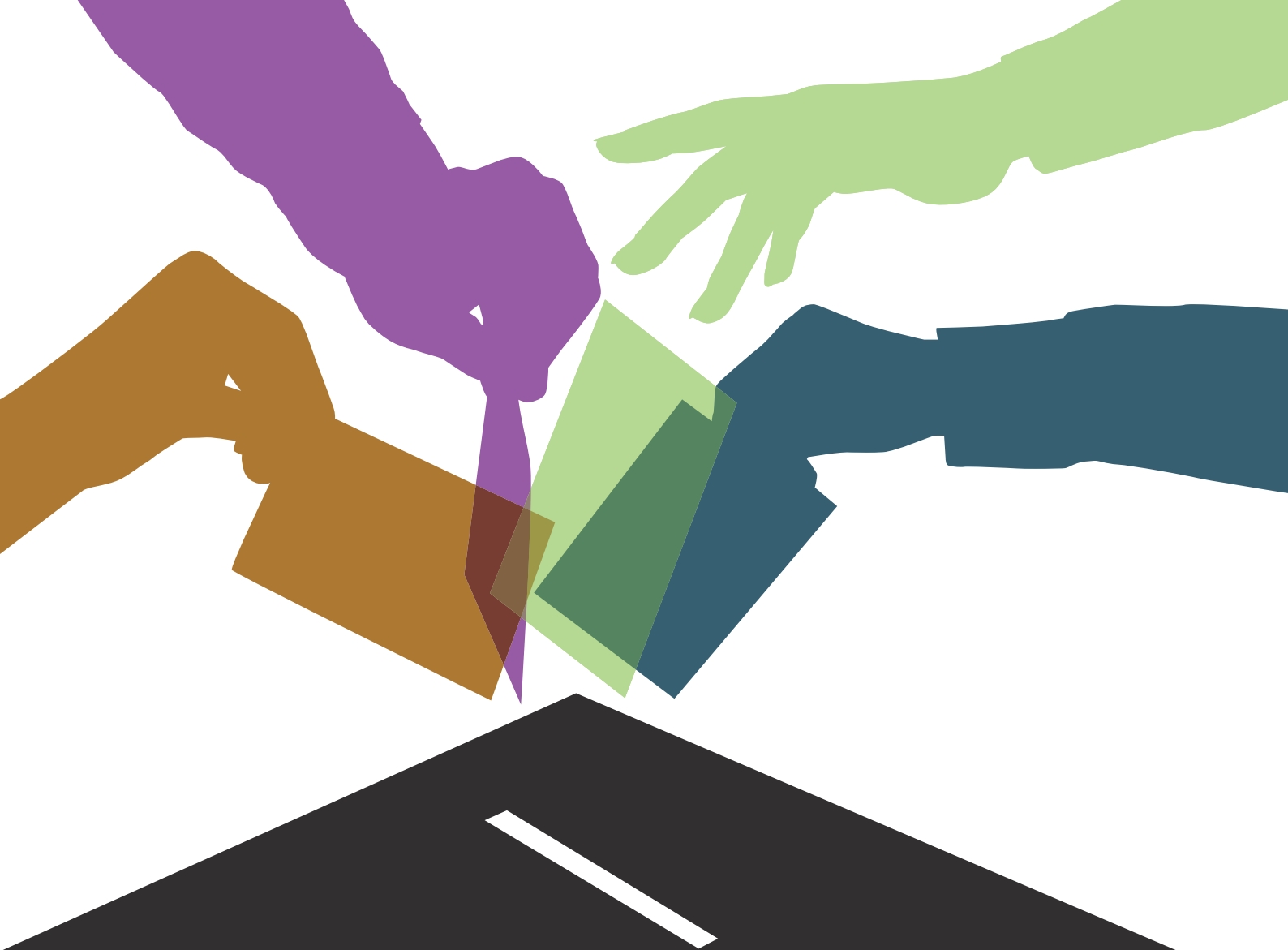
The magazine of Wandsworth Council



New Park for Wandsworth page 18
Getting winter-ready pages 6-7

Delivered to 159,000 homes - Balham Battersea Earlsfield Furzedown Putney Roehampton Southfields Tooting Wandsworth



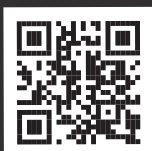


Keep your vote

You now need to show photo ID when voting in person at a polling station.

If you don't have photo ID don't worry, you can apply now for a free Voter Authority Certificate for use at future elections.

Visit voter-authority-certificate.service.gov.uk or call the helpline on 020 8871 6023



A list of accepted photo IDs can be found at gov.uk/voting-photo-id



Inside this issue



Cash help to become ULEZ compliant **page 4**

Cost of Living support **pages 6-7**

Celebrating Black culture **page 8**

Bid to be London Borough of Culture **page 9**

More social homes for families **page 10**

Creating a cleaner borough **pages 12-14**

Fight to save kids' cancer care **page 15**

Cleaning up the air **page 16**

Making Wandsworth safer **pages 22-23**

Celebrating Providence House **page 24**

What's on **pages 26-29**

Useful numbers **page 31**



Cover image: Springfield Park

To obtain a copy of Brightside in large print please telephone (020) 8871 7266 or email brightside@wandsworth.gov.uk

OUR BRIGHTSIDE

Brightside is delivered to every home in the borough and pushed fully through the letterbox.

If you have any suggestions for articles or have a story you would like to tell us about please email: brightside@wandsworth.gov.uk or call: **Editorial (020) 8871 8902 Advertising (020) 8871 7266**

We would love to hear from you.

Brightside is printed on environmentally friendly paper, please recycle.



Image: Koh Sze Kiat

Cash help to become ULEZ-compliant

Motorists on lower incomes can get £1000 from the council to switch to a less polluting car.

The whole of the borough is now within the ULEZ charging zone, so Wandsworth Council has set up the ULEZ cash support scheme to help drivers struggling to afford a new vehicle.

It's set aside £1m for the scheme, which is in addition to the Mayor of London's ULEZ scrappage scheme.

Simon Hogg, council leader, said "Our new ULEZ cash support scheme is targeting help to local people struggling with their everyday finances, along with those who are

dedicated, hardworking local carers. The council's scheme can help them make the switch from high polluting vehicles to cleaner and greener forms of travel."

The scheme is part of the council's package of support to help people through the Cost of Living crisis. To be eligible you must live in Wandsworth, be eligible for qualifying benefits or be registered as a carer and be able to prove the vehicle has been sold or disposed of since January 2023.

To find out if you're eligible and to register visit [wandsworth.gov.uk/ulez-financial-assistance-scheme/](https://www.wandsworth.gov.uk/ulez-financial-assistance-scheme/)

For more information email ulez@wandsworth.gov.uk

Looking to the future – together

■ Getting winter-ready and supporting you through tough times.

Wandsworth is a fantastic place to live with strong, thriving communities. As we bid to become London Borough of Culture, we're looking forward to the future with a new sense of purpose.

In this Brightside you can read about some of the things we're doing to make Wandsworth a fairer, compassionate, more sustainable borough.

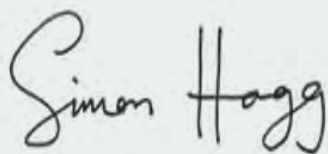
We're investing heavily to improve waste and recycling services, bringing in cleaner vehicles that reduce carbon emissions by 90 per cent and we will introduce food waste boroughwide next year. There are also updates on our work to improve air quality and encourage cleaner and greener transport.

Our council home building programme, Homes for Wandsworth, is building 1,000 much-needed council homes for local families and we are protecting private renters in the borough by introducing new landlord licensing.

And we will continue to do all we can help families who are struggling with the Cost of Living. We know that our household bills will go up this winter, which is why we have the biggest Cost of Living support package of help in London.

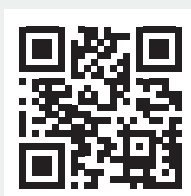
Our measures include community spaces, hardship funds, free school uniforms and much more. Visit [wandsworth.gov.uk/hub](https://www.wandsworth.gov.uk/hub) or scan the QR code below for more information and eligibility. There's also a handy guide to the main schemes on the back that you can tear off and keep.

We know times are tough right now. We are at our best when we come together as a community to support each other. Thank you for everything you do to help make Wandsworth such a fantastic place to live.



Simon Hogg

Leader of Wandsworth Council





We welcome the Mayor of London's free school meals scheme for key stage 2 children. We have also launched our own Schools Food Strategy to ensure children can access hot, healthy, sustainable food, including free breakfasts in some schools.

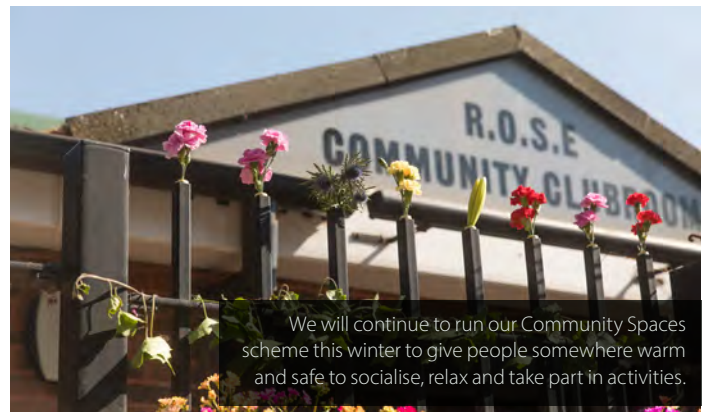
More Cost of Living help

This year our Council Tax Reduction Scheme reduced bills to zero for 10,500 vulnerable households, including pensioners.

Now we're looking at bringing in longer-term changes to make the scheme simpler and more generous and to minimise the impact of income fluctuations in earnings and Universal Credit.

We'll be asking local people about these proposed changes before we make a decision later this year. Find out more and have your say at haveyoursay.citizenspace.com/wandsworth/ctr-23

We've also set up a new grant for community and voluntary groups to fund projects that help Wandsworth residents over the winter months, including community spaces and access to affordable nutritious food. The next deadline to apply is December 4. Visit wandsworth.gov.uk/cost-of-living-grant-fund. It's all part of our ongoing Cost of Living support package – the largest and most generous in London.



We will continue to run our Community Spaces scheme this winter to give people somewhere warm and safe to socialise, relax and take part in activities.

Last winter the council reacted rapidly to get people the help they needed. Now, following feedback from our Cost of Living Commission, we're taking longer-term action – as a council and with our partners in the community.

Find out if there is a scheme that helps you on our handy guide on the back of this magazine.

Visit our Cost of Living Hub at wandsworth.gov.uk/hub

What we have achieved so far

£1.3m directed to the Voluntary Sector

EntitledTo calculator completed **1,215 times**



27,000 hot meals given out at council spaces



172,000 flyers distributed across the borough

Libraries open for an **extra 224 hours** each month over winter 2022/2023



£414,666 brought into **126 households** via Pension Credit Campaign



193 boiler and handy person visits to help people lower their heating bills



55 community spaces open over winter 2022/2023



Children from lower-income families can enjoy free activities during the school holidays, including a free lunch. Highlights this summer included The Big Play Out in Battersea Park.

Wandsworth
Council

Cost of Living support

- Help with grants, bills and benefits
- Support for families
- Where to turn in a crisis and more



visit: [wandsworth.gov.uk/hub](https://www.wandsworth.gov.uk/hub)

call: 0808 175 3339



Wandsworth has been celebrating Black history and culture during Black History Month.

Highlights have included a book signing by boxer Frank Bruno, an interactive poetry performance with local schoolchildren by Children's Poet Laureate Joseph Coelho and events throughout the month in borough libraries.

And a new plaque – the first ever to a woman of colour in Battersea - has been put up to mark the former Barnard Road home of ground-breaking singer and performer Evelyn Dove.

Born in 1902, Evelyn studied music and singing at the Royal Academy of Music before embarking on a successful international jazz and cabaret career and becoming the first woman of African heritage to be broadcast on BBC Radio, three years after its launch in 1925.

The month is almost over, but there's still time to see the Sheroes exhibition featuring portraits of a selection of female founders and prominent local Black women. You can see them in the Marble Hall at Wandsworth Town Hall until the end of the month.

Local libraries will be running events until November 4, including a chance to learn about the Ashanti royal family in Ghana, sessions on how to trace UK Black ancestry, storytimes and crafts for children and a Black health workshop.

Find out about celebrating Black culture throughout the year in Wandsworth at wandsworth.gov.uk/bhm



Members of the Battersea Society, Deputy Council Leader Kemi Akinola, the family of Evelyn Dove, writers and Marsha de Cordova MP gather at 25a Barnard Road.



Some of the borough's teachers join Children's Poet Laureate Joseph Coelho to show their support for the bid.

Let's celebrate everything we love about our home

Wandsworth's campaign to win London Borough of Culture 2025 has been given the thumbs up by thousands of residents including Children's Laureate Joseph Coelho and former boxer Frank Bruno who both grew up in the borough.

Over the summer hundreds of families and young people shared their creative ideas with the council which will help us to put together an exciting programme of events for 2025.

We've also been making new connections and listening to businesses, arts organisations, community partners and voluntary groups on what would make a successful year of culture right across the borough, from Battersea to Roehampton and Tooting to Putney. So many people have told us how much they love living or working here - and they've also told us about the changes they want to see.

Being London Borough of Culture in 2025 would provide a moment for everyone to come together to celebrate the creativity, contrasts, rich culture and diverse neighbourhoods that shape Wandsworth now and into the future.

Wandsworth's bid for London Borough of Culture will be sent to the Mayor of London at the end of November, ahead of the decision in March 2024.

We want your support, so let's do this together! Sign our quick online pledge of support for Wandsworth as London Borough of Culture or tell us about your favourite part of the borough - visit wandsworth.gov.uk/culture



Simon Hogg talks to local groups about why Wandsworth is bidding for London Borough of Culture.

“ Being London Borough of Culture would be a real catalyst for change and a statement about where we're going as a vibrant, forward-looking, innovative borough – a place where every single person has access to all the amazing and unique things Wandsworth has to offer.

Simon Hogg, Leader of Wandsworth Council,



Frank Bruno, who grew up in Wandsworth, backs the bid.

Aydin Dikerdem inspects progress on the Colson Way Estate.



More social homes for families

■ Wandsworth has set out how it will create more genuinely affordable homes and cut waiting lists.

It's reviewing the Local Plan – a legal document setting out the council's long-term planning policy – and will look to developers to deliver more secure and affordable homes for local people.

As part of the review, residents will be asked for their views – part of the council's commitment to really listening to what local people think and want.

Historically in Wandsworth, property developers have only had to provide 35 per cent affordable homes when they built in the

borough. We want to increase this to half of new homes being affordable with a greater number of those being for social rent.

These proposed new policies will apply to all property developments in the borough, not just large developments.

Simon Hogg, Leader of the Council, said: "We are already building 1,000 new council homes on our own land through our Homes for Wandsworth plan – and introducing landlord licensing to protect renters. Now we are seeking to ensure property developers contribute towards our vision of a fairer borough for all."

Aydin Dikerdem, Cabinet Member for Housing, said: "Thousands of children in Wandsworth grow up in temporary accommodation and that is why we are urgently seeking social rented homes that give them security for the long-term. We could comfortably fix this crisis in a decade if every third home built took another family off the council's waiting list."

Have your say at
[wandsworth.gov.uk/localplan](https://www.wandsworth.gov.uk/localplan)

Aydin Dikerdem,
Cabinet Member for Housing



Driving out rogue landlords

■ We're consulting on proposals to draw up extra licensing rules to drive up standards and crack down on rogue landlords.

Wandsworth wants to introduce additional licensing for homes

shared by more than three residents from different households.

Aydin Dikerdem, Cabinet Member for Housing, said: "Having a good home is the foundation for a good life. The schemes we are proposing would mean that the council is able to take more robust action on sub-standard homes and increase the support available to tenants – improving standards in the private rental market and creating a fairer borough for everyone."

A 12-week consultation on the proposed schemes will start in the coming months.



Get on your **electric** bike or scooter

Wandsworth has joined the London e-scooter trial.

Riding an e-scooter as part of the London trial is the only lawful way to ride an e-scooter on the public highway in London. The use of private e-scooters on the public highway remains illegal.

Geo-fence technology will stop an e-scooter operating outside a designated zone and unlike e-bikes, they cannot operate manually without power.

E-scooters can only be parked within a designated parking bay in any part of the borough and the ride cannot end if a rider attempts to leave an e-scooter outside of a bay.

The trial has been approved by the Department for Transport until May 2024. Wandsworth hopes to reach final agreements with Transport for London to join in the new year.

Joining the pilot scheme will help determine if the e-scooter scheme is sustainable long-term and offer insight into likely future demand and growth.



Wandsworth Council is taking action to stop dockless hire bikes blocking pavements and creating hazards for pedestrians.

The council is setting up designated parking bays where hire bikes can be left by riders at the end of their journeys. Riders will have to use these spaces or risk being banned from hiring bikes.

Jenny Yates, Wandsworth's Cabinet Member for Transport said: "We'll work in partnership with the bike hire companies to ensure their bikes are parked in mandatory bays in town centres and busy areas. We've already identified more than 100 locations where hire bikes could be parked without causing obstruction. The use of these spaces will now be the subject of local consultation."

A e-scooter trial and responsible e-bike hire are part of the Future Streets transport campaign. Read more at [wandsworth.gov.uk/future-streets-strategy](https://www.wandsworth.gov.uk/future-streets-strategy)

Our Cleaner Borough

Working together for a cleaner Wandsworth

Cleaner Borough Plan

Wandsworth Council is stepping up the quality of waste collection services in the borough, introducing a new food waste collection service and ensuring missed collections and messy spillages are tackled swiftly.

These bold ambitions – delivered through a refreshed 4-year waste contract – include:

- Guaranteed weekly rubbish and recycling collections
- Introduce food waste collections for all in 2024
- Better services for housing estates, including new bins and signs
- Recycling points for electricals across the whole borough
- New fleet of modern, cleaner vehicles that can run on cooking oil which can reduce carbon emissions by 90 per cent
- New in-cab technology and we will tackle missed collections



Food waste trials have been introduced in Southfields and Bedford Hill and on the Andrew Reed House and Balham Hill East and West Estates, prior to a borough-wide roll-out by the end of 2024.



Mega Skip days

We increased the number of mega skip days from 12 to 18 days this year - which has already reduced fly-tipping by 11 per cent.

Mega Skip Days are an opportunity for people to dispose of bulky items for free. Large skips are placed in neighbourhoods around the borough for all local residents to use.

Mega skips days are held between 9am to noon, on the following dates,

- Saturday 28 October 2023
- Saturday 25 November 2023
- Saturday 30 December 2023
- Saturday 27 January 2024
- Saturday 24 February 2024
- Saturday 30 March 2024

Visit [wandsworth.gov.uk/megaskipdays](https://www.wandsworth.gov.uk/megaskipdays) for locations and further details about what you can bring. The mega skips are open to residents of the London Borough of Wandsworth only. Proof of address may be required on the day.



Making it easier to recycle

Our Cleaner Borough Plan will also make it easier and simpler to recycle – and help towards the council’s aim to build a more sustainable borough – with the help of all residents. We are making sure that residents are aware of what they can and can’t

recycle by getting clearer information out across the borough. For example, did you know many residents think you can recycle nappies, tissues, wet wipes and polystyrene but you can’t, they actually go in with your household rubbish.



To find out what you can and can’t recycle, along with where you can recycle search for “Recycle Now tool” online or scan the QR code.

“We want everyone to take pride in their local neighbourhood. With the help of residents, our Cleaner Borough Plan will mean clean and tidy streets and improve recycling rates as a borough so that we’re doing our part to build a sustainable future for all.”



Help prevent battery fires

Never dispose of any sort of battery in with your rubbish or recycling, as it can cause a serious and dangerous fire.

Lithium-ion batteries, loose batteries, e-scooter and vape batteries can all cause fires.

We are reminding Wandsworth residents of the dangers of disposing of Lithium-ion and normal batteries in with your rubbish and recycling, following a number of fires this year.

Fortunately they have been contained quickly by the Fire Brigade, working with Serco and our waste team.

Batteries from your e-scooter or bike, loose batteries and the batteries hidden in our electricals can all cause fires. In fact, any battery can cause a fire.

Batteries can get crushed or punctured and release chemicals



which can cause a serious and dangerous fire when they come into the contact with the air.

Always dispose of batteries separately from your other rubbish and recycling, never in with you household rubbish.

Search online for "Recycle your electricals" and pop in your postcode.

SOUTH THAMES ADULT EDUCATION

Learn something new with one of our exciting Adult Education courses, whether you want to get back into education, enhance your skills for work, start your own business or improve your wellbeing.

Our part time courses fit around your lifestyle, running either in the daytime, evening or on Saturdays. Courses are delivered using a variety of methods, including face-to-face and online classes.

ART, CRAFT & DESIGN • BAKING, CAKE DECORATING & COOKING • CHILDCARE & EARLY YEARS • DIGITAL SKILLS • DISTANCE LEARNING COURSES • ESOL • ENGLISH & MATHS • HEALTH & SOCIAL CARE • HORTICULTURE • LANGUAGES • INTERPRETING MUSIC • PILATES & YOGA • TEACHING ASSISTANT ...

Enrol by visiting our website or telephoning us:

020 8918 7777 • stcg.ac.uk/south-thames-college/adult-education



Apple boss comes to Wandsworth

Apple CEO Tim Cook paid a visit to the borough to find out how the partnership between Apple and Wandsworth schools is getting on. Two schools – St Mary’s and Sacred Heart primaries in Battersea - are learning coding and tech skills thanks to a link-up between Wandsworth Council and the tech giant, which moved into its new Battersea home in February. The partnership project will now be rolled out across nine Wandsworth schools.

Join the fight to save kids’ cancer care

Wandsworth Council leader Simon Hogg has been campaigning for months to save children’s cancer care at St George’s Hospital in Tooting.

Now local people can have their say by taking part in an NHS consultation.

NHS England are choosing between two options for the new children’s cancer Principal Treatment Centre: St George’s, and the Evelina Hospital in central London. NHS England have said that the Evelina is their preferred choice. This would mean that the children’s cancer service at St George’s would close.

Simon Hogg said: “Now is the time to make our voices heard. We’ve been very concerned to learn that parents feel they have not been sufficiently listened to in the NHS process so far.



“I urge residents to respond to the consultation, and write to the Health Secretary, to share their views on this vital issue, and make sure government is paying attention.”

Find out more and follow links to the consultation at wandsworth.gov.uk/stgeorges



Cleaning up the air

■ We're working together as a borough to reduce air pollution.

The new Air Quality Action Plan sets ambitious new targets based on World Health Organisation definitions of dangerous levels of air pollution- which are more challenging than the UK targets currently used.

The plan takes on board the recommendations of the Citizens' Assembly – a group of 50 people chosen at random to represent the views of local residents.

It also reflects the increased urgency to respond to the climate emergency and the need to protect the health of local people – with emphasis on protecting the most vulnerable, including children.

Specific actions include rolling out an awareness campaign, creating a core cycle network across the borough, and supporting businesses with cargo bike deliveries.

“Climate change and poor air quality affect us all, and we all need to be involved in finding solutions,” said Judi Gasser, Cabinet Member for Environment.

“The Assembly told us that we need to be leaders and take the whole borough with us on this journey. We listened and have set more ambitious targets, come up with a wide range of actions and will continue to work in an open, democratic way with the people who live and work in Wandsworth.”


wandsworth.gov.uk/air_quality_action_plan.pdf



“Climate change and poor air quality affect us all, and we all need to be involved in finding solutions.”

Judi Gasser, Cabinet Member for Environment

Do you have a wood burning stove?

 If you have a real fire or wood burning stove, please check the fuel is certified 'Ready to Burn'.

You can find the Ready to Burn mark on the packaging – it shows whether the fuel can be used in smoke control areas such as Wandsworth.

Better still, think about not burning, as it causes dangerous air pollution, can upset neighbours and can damage health.

The most dangerous tiny particles in smoke, referred to as PM2.5 and PM1, are too small to see but once inhaled they can get deep into the lungs and into the bloodstream affecting all major organs of the body.

These fine particles contain known carcinogens and can also cause asthma, heart disease and have been linked to many cognitive disorders such as dementia and various cancers.

Reasons for concern

Individuals such as children, the elderly, those who are pregnant or have existing breathing or heart conditions are particularly vulnerable.

Current evidence suggests there is no safe level of PM2.5, and both short-term and long-term exposure to PM2.5 increases the risk of early deaths from respiratory and cardiovascular diseases.

One study by Kings College London and NPL found wood burning accounts for between 23 and 31 per cent of urban derived PM2.5 in London - the second largest source after road transport.

Another recent study of indoor air quality in homes with Defra-exempt stoves found that indoor PM2.5 levels were three times higher on days when stoves were used compared to non-use days.

Some residents still consider fires cosy and eco-friendly but all fireplaces, pits and stoves that burn wood, coal and briquettes will contribute towards Climate Change due to the carbon dioxide emissions that are released into the atmosphere.





Springfield Park opens its gates

London's biggest park in over a decade has opened in Tooting.

The first phase of the 32-acre Springfield Park is now being enjoyed by local families. Other phases will follow.

When it's fully open the park will have a pavilion café, amphitheatre, gardens, children's playgrounds, ponds, a new footbridge and a youth shelter. There will also be areas for sports activities that are accessible to all.

It's been delivered and will be maintained through a partnership including South West London and St. George's Mental Health NHS trust. This means Wandsworth residents can enjoy the park without any additional burden on council tax payers.

Simon Hogg, Leader of Wandsworth Council said: "Springfield Park is great news for the community and great news for Wandsworth – a place local families are already starting to enjoy.

"This strong partnership approach means we all benefit from a beautiful new park without paying an open-ended maintenance bill. This is exactly the right result for residents. We'll deliver great new facilities - while keeping your council tax bill low to help in this cost-of-living crisis.

"The new park adds to the 32 parks, 27 playgrounds and 40 sports pitches the council manages and maintains – one of the many reasons Wandsworth such a great place to live, work and visit".





Counting our prickly friends

We're counting hedgehogs to see how healthy the local population is, and we'd like your help.

Enable, who manage Wandsworth's parks on behalf of the council, have put special tunnels at allotment sites that use non-toxic ink that enable biodiversity officers to count pawprints.

But they want as much data as possible to draw up a full picture of where hedgehogs are living. They are asking residents to keep an eye out in gardens and parks near them. Please submit your findings to gigl.org.uk

It's all part of our ongoing work with Enable to record, protect and increase Wandsworth's biodiversity. We'd also like local people to get involved with our monthly Habitat Management Workshop so they can help keep habitats on Tooting and Wandsworth Commons healthy. It's a chance to get involved with your local green spaces as well as socialise, get fit and have fun.

Email parksvolunteers@enablelc.org to get involved.



MARKING FRIENDSHIP

The US Ambassador has unveiled a plaque marking friendship between the US Embassy and the residents of Wandsworth.

The plaque is at the Doddington and Rolle Community Garden. Ambassador Jane Hartley said: "As Ambassador to the United Kingdom and your friendly 'neighbour,' I am immensely proud to be a part of this community."

BLOOMING MARVELLOUS

Four Wandsworth green spaces were successful in this year's London in Bloom awards. Wandsworth Common and Tooting Common both received gold awards, Wandsworth Park received a silver gilt award and St Mary's won a silver.

London in Bloom judges criteria including maintenance, conservation, facilities and the welfare of park users.

COMMON CONSULTATION

The popular lakeside playground on Tooting Common is being upgraded. Please share your ideas on what improvements you would like to see. The deadline to comment is November 14. Visit haveyoursay.citizenspace.com/wandsworthecs/tootingplay-23

PREVENT DIABETES

The Diabetes Prevention Decathlon is a ten-week face-to-face programme to prevent people developing preventable long-term health conditions and includes holistic wellbeing and physical activities. On average participants lose 3kg. It's run by Enable, the council, the NHS and the Health Innovation Network. Visit southwestlondonics.org.uk/our-work/personalised-care/long-term-conditions/prevention-decathlon/

MENOPAUSE SUPPORT

MPower offers personalised one-to-one Menopause Health Coaching alongside supportive peer group sessions. Read more details at mpowermenopause.org. If you want to take part, email mpower@enablelc.org.

SAFETY FORUM

The Wandsworth Violence Against Women and Girls (VAWG) Community Forum is made up of people who work in charities and independent organisations to tackle VAWG and support survivors. The Forum is a place to catch up, network, share ideas and learn. The next meeting is in December. If you are interested in joining, email Kira.Evans@Richmondandwandsworth.gov.uk

Be kind to your kidneys

Protecting the health of your kidneys is an important part of looking after your overall health and wellbeing.

By preventing or managing health conditions that can cause kidney damage, such as high blood pressure and diabetes, you can reduce the risk of Chronic Kidney Disease (CKD).

Chronic Kidney Disease is a common, long-term, condition and is often associated with getting older. The damage happens slowly over a long period of time; the kidneys do not work as well as they should and do not filter blood properly. It can affect anyone, but it's more common in people who are black or of South Asian origin.

CKD often has no symptoms until the disease is at a more advanced stage. You can make changes to your lifestyle that will help protect your kidneys including, stopping smoking, eating a healthy diet, limiting alcohol intake and exercising regularly.

Did you know?

- Around 10 per cent of people in the UK have Chronic Kidney Disease.
- The most common causes of CKD are: Diabetes, high blood pressure and long-term, regular use of some medicines.
- Chronic Kidney Disease often has no symptoms until the disease is at a more advanced stage.
- If left untreated, CKD can make you very unwell.

Top tips to protect your kidney health

Help to protect your kidneys by making changes to your lifestyle including:

- stopping smoking
- eating a healthy diet
- limiting alcohol intake
- exercising regularly

Find out more at
wandsworth.gov.uk/healthyliving

Get your FREE NHS Health Check from your GP

You must be aged 40-74, have not been previously diagnosed with diabetes, kidney disease, heart disease or stroke and have not had an NHS Health check in the last five years.

For more information visit -
[wandsworth.gov.uk/
healthchecks](http://wandsworth.gov.uk/healthchecks)

**NHS
HEALTH
CHECK**

Helping you prevent
diabetes
heart disease
kidney disease
stroke & dementia

NHS

THE BRIGHTER BOROUGH
Wandsworth



A Silver Sunday event at the Wandsworth Civic Suite.

Silver month

Thanks to everyone who came along to events hosted by the council, Enable and community groups all over the borough this month to mark Silver Sunday and the Brighter Living Fair.

Brighter Living is a festival of events, workshops and taster sessions for adults looking for care and support services in Wandsworth that promote healthy, safe and independent lifestyles. There are still a few events left – **visit [wandsworth.gov.uk/brighter-living-fair](https://www.wandsworth.gov.uk/brighter-living-fair)**

Get help to prevent falls

A lot of people worry about falling as they get older. It can knock people's confidence and make them worry about going out.

Falls are more common as people get older, especially if they have a long-term health condition, and the consequences can be more serious for older people. According to the NHS around a third of people over 65, and half of over 80s, will have a fall each year.

Some falls can be prevented with the right advice and guidance. You can get information and support on factors that can increase your risk and how you can reduce them, and services and activities in Wandsworth to help keep you strong, active and independent.

Visit [wandsworth.gov.uk/preventing-falls](https://www.wandsworth.gov.uk/preventing-falls)



Mums can book themselves on a free ten-week Breathe Melodies for Mums course, which uses singing to help with symptoms of postnatal depression. It's funded by the council's Arts for Health and Wellbeing Fund and run by the NHS and Enable. Visit [breathemelodies.org](https://www.breathemelodies.org) and click on the singing link.



Simon Hogg in the Joint Control Centre.

Making your borough safer

We've made a major investment to tackle crime and anti-social behaviour and better support people affected by domestic violence and abuse.

More staff: There will be three additional Community Safety Officers to work with communities and victims of crime in areas prone to crime and anti-social behaviour and an extra analyst to help us better understand crime trends and prevent future crime.

Better CCTV: There will be more people monitoring cameras in our state-of-the-art Joint Control Centre at Wandsworth Town Hall. There are more than 1000 CCTV cameras recording 24/7, 365 days a year.

Preventing domestic abuse: We've already doubled support for victims of Violence Against Women and Girls (VAWG). Our new Independent Domestic Violence Advocacy service will boost the level of support and make sure it continues when Government grant funding proves unstable.

Working with businesses: As part of the Wandsworth Community Safety Partnership, we've relaunched the Business Against Crime scheme. Shops, bars and other town centre businesses can become part of a network sharing information on crime and community safety with each other, the police and the council. If you want to join it, [email communitysafety@richmondandwandsworth.gov.uk](mailto:communitysafety@richmondandwandsworth.gov.uk).

Town centre Safe Spaces: The Community Safety Partnership has a 'Safe Space' outside Starbucks at Clapham Junction station provide a place for people to go if they feel vulnerable. It's there every Friday night from 9pm-1am.

Help for young people: We've teamed up with Crimestoppers so young people can anonymously report crime. This will help track trends and enable targeted action. [Visit fearless.org](http://fearless.org).



Sign up for Business Against Crime.



A BOROUGH
SAFER
FOR ALL

“ Keeping Wandsworth safe is a whole community effort – it’s everyone’s business. As a council - supporting the safety and wellbeing of residents across Wandsworth is at the heart of what we stand for. ”

Simon Hogg Leader of the Council

■ See local services and sources of support at [wandsworth.gov.uk/community-safety](https://www.wandsworth.gov.uk/community-safety)



Celebrating Providence House

Robert Musgrave MBE dedicated 50 years of his life to Providence House, the legendary Battersea youth club that has seen thousands of children pass through its doors.

Now, recently retired from his role as Director of Providence House, Robert has published a book about his experiences in youth and community work in Battersea called *One Year is Not Enough*.

Robert has helped generations of families in north Battersea. People who came to the club 30 or 40 years ago still thank him for what he and the club did for them. One of the more recent attendees was West Ham striker Michail Antonio who played for the Providence House Saturday team.

He said: "When I came through these doors at age 11 there was gangs and stuff like that, but once you came into Providence House all the gang members, they were in here but there was not really much trouble here because they had the respect of the place.

"It's somewhere you always felt safe, you always felt comfortable. They gave us opportunities and tried to keep us off the streets."

Robert Musgrave told Brightside: "It was on a Tuesday evening in July 1973, that a young man began hesitantly at a Christian mission working among young people in south London. A hesitancy that turned into a constancy and into a vocation. I came for one year, but one thing is certain – that one year was never enough."

One Year Is Not Enough by Robert Musgrave is available price £10 from Amazon and other booksellers



NEW
ACRES
WANDS
WORTH



Intermediate rent
apartments available, right
next door to Wandsworth
Town station.



We're excited to offer 1 and 2 bedroom
apartments available for intermediate
rent, which come with a range of incredible
amenities including a 25m lido and
residents' gym.

To be eligible, you must be registered
via Wandsworth Borough Council.

To find out more visit:

NEWACRESWANDSWORTH.COM/INTERMEDIATERENT

NEWACRESWANDSWORTH.COM

@NEWACRESWANDSWORTH

Homes for rent by



Please be advised that the apartments are near to a Waste & Recycling Facility. Issues relating to air quality, odour, noise and access to the Waste and Recycling Facilities were considered as part of determination of the Planning Application to build these apartments. Wandsworth Borough Council will consider the agent of change principle in relation to any nuisance complaints made by occupiers against the Waste and Recycling Facilities (without fettering its discretion to investigate statutory nuisances under the Environmental Protection Act 1990 or other related environmental legislation).



WHAT'S ON?

Battersea Park Fireworks

November 4-5

■ The Saturday Night show will be delivered by Titanium Fireworks who provide notable displays to events such as The Mayor of London's New Year's Eve Celebrations and the 2022 Commonwealth Games. There will also be the traditional bonfire and food and drinks stalls.

November 5 will be a family-oriented Sunday night show with an earlier start time and children's activities.

Book tickets now at [batterseaparkfireworks.com](https://www.batterseaparkfireworks.com)

Liminal

Until October 31

An exhibition of works by the members of the Woodfield Pavilion, including paintings, photographs, etchings and prints.

thewoodfield.org

Childminder briefing sessions

November 7, December 5, 10am-noon

Find out if being a childminder is for you and start the registration process. No need to book – just turn up

7 Ram Street, SW18 1TJ

childminderservice@wandsworth.gov.uk

Dr Bike

Get a check-up from Dr Bike and make sure your bike is safe and in good working order. Hospital staff and the general public all welcome.

October 23, 8.30am-3pm:

Rear Car Park, Queen Mary's Hospital Roehampton

October 24, 8.30am-3pm:

Outside Trinity and Shaftesbury Building,
Springfield Hospital, Tooting

November 6, 7.30am-3pm:

St George's Hospital, Tooting

Summerstown182 History Walks

Find out more about Tooting and its history.

October 28: Planet Tooting –
stories of a migrant population and its contribution to Tooting

October 31: Spooking Tooting –
take a deep-dive into Tooting's spooky past.

Summerstown182.wordpress.com

ShakeltUP: The Improvised Shakespeare Show

October 31-November 4

Using suggestions from the audience, a brand-new play that Shakespeare never wrote is created live on stage.

Turbine theatre, Battersea

theturbinetheatre.com

The Making of Pinocchio

November 1-10

A story of love and transition told through the story of Pinocchio. Set in a fictional film studio, you are invited to go behind the scenes of Cade & MacAskill's creative process and their relationship, and question what it takes to tell your truth.

bac.org.uk/whats-on/the-making-of-pinocchio-2023/

Race and Climate Justice

November 2, 6pm

This panel discussion is an opportunity to hear from guest speakers on how to better involve underrepresented groups in the fight to protect the planet and also to shed light on how marginalised communities are impacted by the climate crisis and how the council can support diverse groups in climate solutions.

Nine Elms Studio, Ponton Road, SW11

Search Eventbrite Race and Climate Justice

St Margaret's Black Tie Fundraising Ball

November 7, 7pm

Enjoy music from Suspiciously Elvis, dinner from Gazette and a grand auction. Money raised will help create a new parish centre for the benefit of the whole community.

St Margaret's Church, Putney

Email sallystrahan@outlook.com

Jazz at World Heart Beat

November 10-19

World Heart Beat is one of the host venues for the EFG London Jazz Festival with a choice of seven different jazz concerts:

Elaine Correa's Cuban Septet

Julian Joseph Trio with
Harriet Mackenzie

Ava and the SoundCrew

Christine Tobin: Returning Weather

Josiah Wade and Sam C-Sé

May Inoue

Rebecca Nash: Redefining Element 78

World Heart Beat, Embassy Gardens, SW11
worldheartbeat.org/whats-on

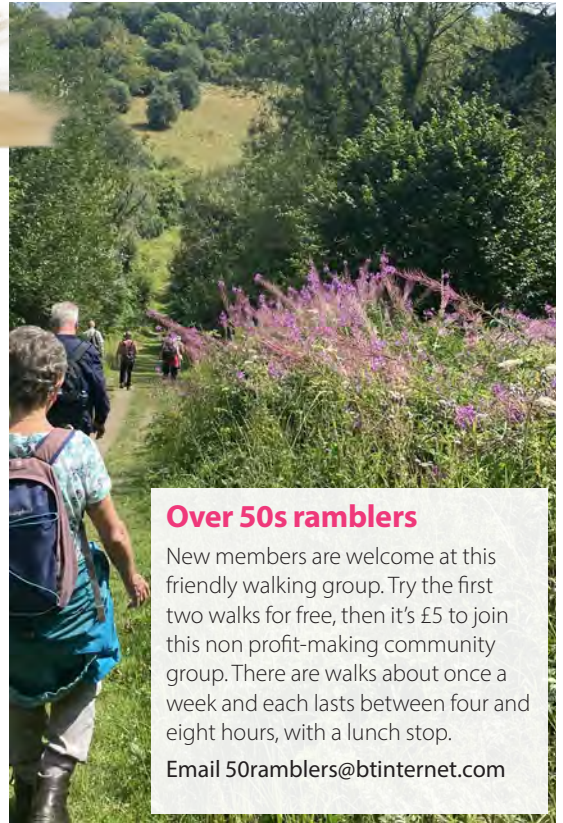




Take part in Wandsworth Arts Fringe 2024

Wandsworth Arts Fringe returns next June, and artists and creatives can express their interest in taking part now. We pride ourselves on being a testing ground for bold, experimental work, and we're looking for professional and emerging artists who want to present their work to new audiences.

Find out more at wandsworthfringe.com/get-involved/expressions-of-interest



Over 50s ramblers

New members are welcome at this friendly walking group. Try the first two walks for free, then it's £5 to join this non profit-making community group. There are walks about once a week and each lasts between four and eight hours, with a lunch stop.

Email 50ramblers@btinternet.com

Royal Trinity Hospice Christmas Fair

November 14-15

More than 40 stalls selling jewellery, gifts, toys gadgets, cards, decoration, books, food and more.

St Luke's Church, Ramsden Road, Balham
royaltrinityhospicechristmasfair.org

Festive town centres

The Christmas shopping season kicks off soon in a town centre near you. Enjoy Christmas light switch-on ceremonies and more.

November 24

Light ceremonies in Putney, Clapham Junction and Northcote Road

November 25

Putney Ice Sculpture Trail and Wandsworth Town Christmas Festival and light ceremony.

November 26

Northcote Road Christmas Market

December 1

Furzedown light ceremony

December 2

Small Business Saturday. Support your local shops by getting your gifts in neighbourhood stores.

December 4

Balham light ceremony

December 5

Battersea Square light ceremony

December 7

Tooting light ceremony



St Luke's Christmas Market

December 2, 11am-3pm

New and pre-loved, high-quality gifts, homemade goodies, mulled wine, cafe for snacks and lunches, lucky dip, bottle tombola and more. £2per adult. Children free.

Entry through Community Hall at 194 Ramsden Road, Balham



Precursing

Oct 13-November 5

A new installation and performance work by Nina Davies includes sculpture alongside a video and sound installation and an ambitious continuous dance performance.

Matt's Gallery, Nine Elms

mattsgallery.org/exhibitions/precursing



Mondays at the ROSE

Pop into the ROSE community space on a Monday for free social activities, free meal and after school club.

Open to all from 9am to 7pm, with art club 10am-12noon, board games from 12-3pm and after school club 3-7pm with a free meal available to everyone from 4pm. No need to book, just come along.

Join in the Christmas spirit on Monday 4 December with mince pies and Santa's grotto.

ROSE community clubroom, Ascalon Street, Battersea SW8 4DL

Power to Connect Digital Drop Ins

Free, friendly and relaxed drop-in support.

- Battersea Library: Every Monday 10am-noon
 - Roehampton Library: Every Monday 2pm-4pm
 - Putney Library: Every Friday 10am-noon
 - Tooting Library: Every Friday 1.30pm-3.30pm
- powertoconnect.co.uk

My Fair Lady

December 13-22

The much-loved musical comes to the stage in Putney

Putney Arts Theate

putneyartstheatre.org.uk

Rotary Club Christmas Day lunch

Rotary Club of Battersea Park has been holding a Christmas Day Lunch for elderly since 1962 catering for up to 450 elderly people, who would otherwise be alone on Christmas Day.

The event is run by Rotary members and the support of more than 250 volunteers. It is completely free for guests, so donations towards running costs are welcome.

rotarychristmasday.org Info@rotarychristmasday.org



Join our
adventure
and book
here before
we sell out!



PETER PAN THE PANTO

December
16th – 23rd
Wandsworth Civic Suite

Tickets
available from
£11 + fees

Get in touch:
theatre@enablelc.org
whatsonwandsworth.com/peter-pan-the-panto



In partnership with

enable.

For happy, healthier communities.
Not for profit.

Doing it online

Using our website helps keep your council tax bills low

Report a waste problem

wandsworth.gov.uk/waste

Request a housing repair

wandsworth.gov.uk/housingonline

Search planning applications

wandsworth.gov.uk/planningregister

Report a street problem

wandsworth.gov.uk/streets

Apply for a school place

eadmissions.org.uk

Book an MOT

wandsworth.gov.uk/MOT

Report noise and nuisances

wandsworth.gov.uk/noise

Apply or renew a parking permit

wandsworth.gov.uk/parkingpermits

Report graffiti for removal

wandsworth.gov.uk/graffiti

Report an abandoned vehicle

wandsworth.gov.uk/abandonedvehicles

Tell us if you are moving in or out of Wandsworth

wandsworth.gov.uk/MIMO

Enquire about your housing options

wandsworth.gov.uk/housingoptions

Pay it online

It's now easier to pay online at wandsworth.gov.uk/payments

Pay your council tax

wandsworth.gov.uk/paycounciltax

Pay a parking fine

wandsworth.gov.uk/parking/payment

Pay your rent

wandsworth.gov.uk/rents

Pay for a marriage or civil partnership

ceremony

wandsworth.gov.uk/ceremonypayment

Pay your business rates

wandsworth.gov.uk/paybusinessrates

Pay a waste or littering penalty

wandsworth.gov.uk/waste-enforcement

Talk to us online

weekly e-newsletter

wandsworth.gov.uk/enews



facebook.com/wandsworth.council



[@wandbc](https://twitter.com/wandbc)



instagram.com/wandsworth_council

My Account

Create an account and you will only have to sign in once to access the main council services.

wandsworth.gov.uk/myaccount

Other contacts at the council

Adult Social Services

(020) 8871 7707

Births, Deaths, Marriages and Voting Hotline

(020) 8871 6120

Early Years and Childcare

Hotline including Family

Information Service and After

School and Holiday Play Centre bookings

(020) 8871 7899

Environmental Services

including noise, pest control, private housing and licensing
(020) 8871 6127

Finance Hotline including benefits, council tax, rents and business rates
(020) 8871 8081

Housing Hotline including housing management and repairs, service charges, home

ownership, homelessness and housing advice

(020) 8871 6161

Parking and Streets Hotline including concessionary travel, blue badges, MOTs, highways and skip licensing and bay suspensions
(020) 8871 8871

Planning and Building Control hotline including Community Infrastructure Levy (CIL), land searches and street naming and numbering
(020) 8871 7620

Schools and Admissions
(020) 8871 7316

Waste Hotline including rubbish, recycling and litter
(020) 8871 8558

Get winter-ready

Your guide to
help and advice



Money advice

Find out what benefits you are entitled to with our free online calculator, plus find out about schemes like fuel grants, winter fuel payments, rent and council tax support, support for pensioners and people with disabilities, crisis assistance and more.



Community Spaces

There's a network of places run by the council and community groups, including libraries, community centres and children's centres. You can go to any Community Space for free to keep warm, relax, enjoy a hot drink and chat with neighbours. Some locations also have snacks and children's activities.



Keep your home warm

Free specialist advice is available on ways to cut energy bills. You can get a home visit or telephone advice and may be eligible for practical help such as grants, referrals or energy-saving items like insulation, LED bulbs or radiator panels.



Help with food

Find out about free school meals, the NHS Healthy Start scheme, the Wandsworth Foodbank and other organisations offering support.



Get advice

The council funds Citizens Advice Wandsworth to provide Cost of Living advice. Find out about that and other groups offering free advice on money and other issues.



Free gym and Swim

You may be eligible for free off-peak swimming and junior gym sessions in Wandsworth leisure centres if you are in receipt of Universal Credit or free school meals or if you are a foster carer, care leaver or asylum seeker.



To get details of all the help on offer, visit the Cost of Living Support Hub
[wandsworth.gov.uk/hub](https://www.wandsworth.gov.uk/hub)
call: 0808 175 3339