



Wandsworth Council

Housing & Regeneration Department
Town Hall, Wandsworth High Street
London, SW18 2PU

Please ask for/reply to:
*Mark Eastmond
Phone: **(020) 8871 6000**
Direct line **(020) 8871 7574**

Email: developmentteam
@richmondandwandsworth.gov.uk

Web: **www.wandsworth.gov.uk**

Date: 24th January 2024

Dear Resident,

Update on Council development site: Eastwood North (Aubyn Square) & Eastwood South (Toland Square)

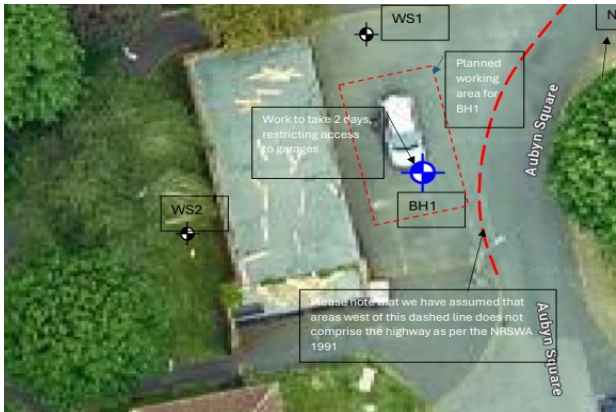
We are writing to update you on the progress and status of the proposed development on Eastwood North & South estates. We have commissioned a highly experienced and skilled team of architects, landscape designers and consultants to assess the feasibility for the redevelopment of previously non-residential areas into much-needed new council rent homes. We are also exploring opportunities to improve landscaping and play space.

As part of the early feasibility and design stages, we have appointed RSK Geoscience to undertake Phase 2 site investigations of the land. This would involve exploratory drilling of shallow/deep boreholes to enable scanning for services and sampling.

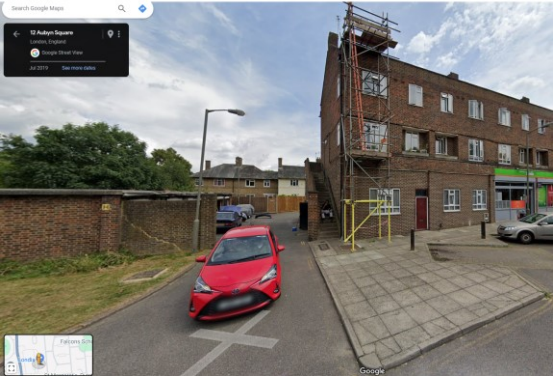
Site investigations commence 1st February 2024 and completes 12 February 2024. Areas to be investigated include the frontage of garages we are proposing to develop; please avoid parking vehicles in these areas during the works as it would be disruptive. These areas are noted as blue and white dots in red hatched areas. Also, some of the investigative work will be undertaken on green areas marked by black and white dots. Please find below a map and photos of the sites for ease of identification.

Eastwood North (Aubyn Square)

N1 Location



N7 Location



Eastwood South (Toland Square)

S1 Location



S2 Location



S3 Location



We are aware these investigations will be inconveniencing but we would appreciate your usual co-operation.

If you have any queries about work whilst RSK Geosciences are on site, please do not hesitate to contact us at developmentteam@richmondandwandsworth.gov.uk. Please visit the dedicated website: [Where we are building homes - Wandsworth Borough Council](#) (Design feasibility/Pre-planning – Eastwood North & South)

Yours Faithfully

A handwritten signature in black ink, appearing to read 'M Eastmond', on a light-colored background.

Mark Eastmond
Development Project Manager
Housing Strategy and Development