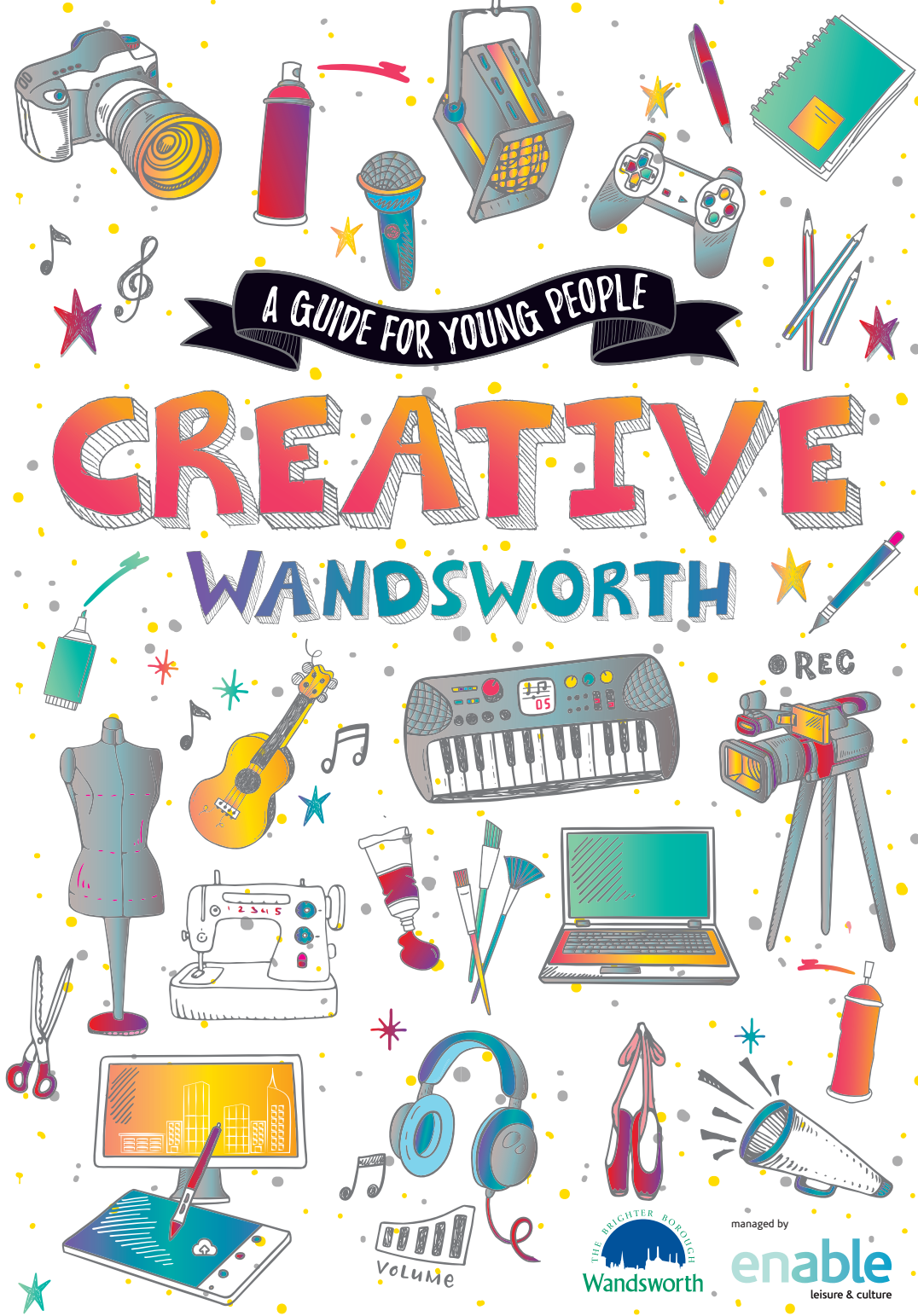


A GUIDE FOR YOUNG PEOPLE

CREATIVE WANDSWORTH



THE BRIGHTER BORDERS
Wandsworth

managed by
enable
leisure & culture

Cultivate

Cultivate is Enable Leisure and Culture's arts education programme working with primary and secondary schools to inspire, involve and educate young people about the creative opportunities in Wandsworth, including creative careers and future skills.




THE CULTIVATE PROGRAMME STARTED IN 2015 AND SINCE ITS INCEPTION HAS WORKED WITH OVER 2,600 YOUNG PEOPLE

It commissions and delivers a range of creative projects including Cultivate Routes, a creative careers workshop series in which creative practitioners, freelancers or representatives of creative businesses visit schools to deliver hands on inspiration sessions for students.

FOR MORE INFO VISIT

 CULTIVATE.LONDON

 [@CULTIVATE_LDN](https://twitter.com/CULTIVATE_LDN)

 Picture caption info to go here please. **Above**, blah blah blah. **Below**, blah blah



THIS GUIDE IS FUNDED BY:



A PARTNERSHIP BETWEEN



Creative Wandsworth is brought to you by Enable Leisure & Culture on behalf of Wandsworth Council, with support from Wandsworth Ambitions Careers Cluster and A New Direction.

Start your creative journey... 

GET STARTED

CREATE

Your Future

Did You Know?

1 IN 6 JOBS IN LONDON ARE IN THE CREATIVE INDUSTRIES

1



3

INTERESTED IN A CREATIVE CAREER?

Here are some great ways to get started:

WORK EXPERIENCE

Try your hand at a creative job and get to know the skills involved before deciding your next steps. Many of the creative organisations in this guide offer work experience placements – contact them to find out more.

APPRENTICESHIPS

An apprenticeship gives you hands-on experience, a salary and the opportunity to train while you work. After successfully completing your apprenticeship, you'll have gained the confidence and skills needed to progress in your chosen career. Apprenticeships are available across a variety of organisations in the creative sector.

VOLUNTEERING

Volunteering is a fantastic way to gain experience and see what it's like to be part

of a creative team as well as contributing to your local community. Whilst unpaid, volunteering can look great on your CV and will help you gather valuable skills which can be used to take the next step towards your future career.

FURTHER STUDY

Wandsworth is home to many colleges and universities where you can study creative subjects. If you are interested in finding out more speak to your school careers advisor who can point you in the right direction.

Inside Job: STAGE MANAGER

A stage manager has overall responsibility for the smooth running of a theatre production, managing rehearsals, actors, technicians, props and costume fittings, and liaising with front-of-house staff and the director.

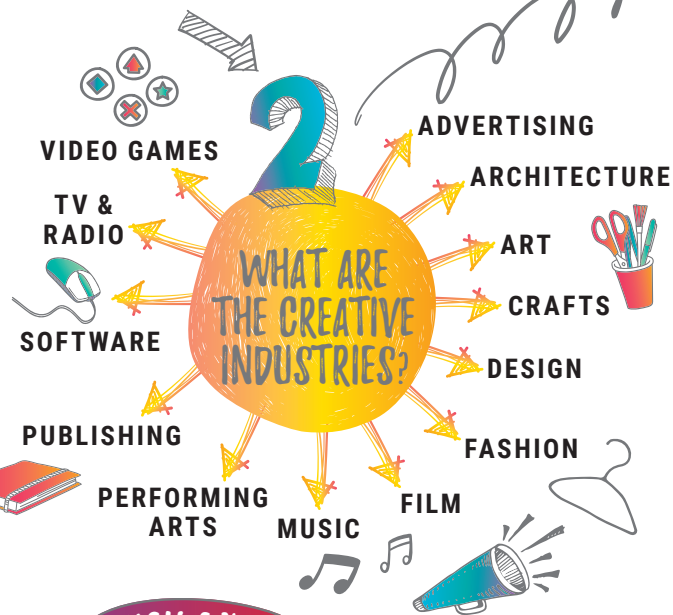
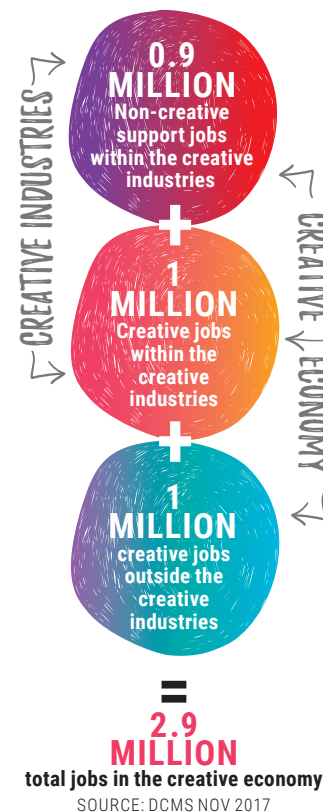


True or False?

YOU HAVE TO BE ARTISTIC TO WORK IN THE CREATIVE SECTOR

TRUE **FALSE**

There are many skills and roles that the creative industry needs. Employment in the UK creative economy:



QUICK GUIDE

Read through the directory section of this guide and look for the organisations that appeal to you. You can use the key on page six to help you find the things you're into e.g. if you're a film geek look for the icon.

Keep track of your creative journey on page 16 of this guide. It will help you achieve your goals.

Look out for the icon to find out about places offering work, training or volunteering opportunities enabling you to gain valuable industry experience.



THE DIRECTORY

Our guide to what's happening near you...



KEY LOOK FOR THESE ICONS TO FIND THE ACTIVITIES THAT YOU WANT TO DO

WHAT ARE YOU INTO...

- Combined arts
- Dance
- Film
- Music
- Theatre
- Visual Arts
- Radio or podcasts
- Craft

WHICH AGE RANGE IS IT FOR

- All school ages
- ALL AGES
- 11 to 18 years-old
- AGES 11-18
- 16-18 years-old
- AGES 16-18

WHAT'S ON OFFER...

- Visit us
- Volunteering, work or training opportunities
- One off workshops or events
- Supports or runs Arts Award
- Ongoing courses or clubs

Wheelchair accessible

Accessible toilet

Hearing loop

Inside Job: CURATOR

A curator's job is to create spaces for things to happen. Curators have to find the best space for ideas to be expressed and work with lots of different people to bring ideas together, artists, audiences, musicians, writers or anyone who has an interesting idea.



ALL AGES

ARTLACUNA

48 Falcon Road, SW11 2LR
* artlacuna.org * 07845 328125

ArtLacuna is an artist's meeting place, run by artists, which brings together local creative people across disciplines to share their work and ideas. They provide studio and exhibition space, visiting resident artists, exhibitions, and hold workshops, screenings and talks to help younger people access the visual arts. Located in an old coroner's office near Clapham Junction, it accommodates artist studios, a residency and research programme, as well as project and exhibition space. They also make all their research freely available online to make their work accessible to all.



BAKED BEAN COMPANY

108 Battersea High Street, SW11 3HP
* bakedbeancompany.com * 020 8944 0024

Baked Bean runs a wide range of theatre, drama and arts projects and groups for young people and adults with learning disabilities to help build confidence and skills, and promote social inclusion. Their youth group, for young people aged 12-19, offers drama and dance classes (participants can do drama, dance, or both!). Their youth service work towards performances in local theatres, such as Wimbledon Theatre and the TARA arts centre. They also organise clubs during the school break, which are aimed specifically at young people. Adult classes (18+) run during the week.



AGES 11-18



"THE WORST ENEMY TO CREATIVITY IS SELF-DOUBT."
SYLVIA PLATH



ALL AGES

BATTERSEA ARTS CENTRE

Lavender Hill, SW11 5TN
* bac.org.uk * 020 7223 2223

Battersea Arts Centre (BAC) has something for all the family, including an imaginative indoor play-space for under 5s and free creative activities during monthly Family Saturdays. BAC also runs The Time Keeper's Club – a series of workshops supporting the primary curriculum and programmes for people aged 12-29 who want to be creative and learn new skills. Their Homegrown Company offers the chance to work with professional directors and artists; young signers musicians and rappers can be part of an exciting collective through the Beatbox Academy. Young people can also join the Young Producers scheme and gain experience of producing original events.



ALL AGES

BLACKSHAW THEATRE COMPANY

* blackshawonline.com

Blackshaw are a theatre company who offer workshops and work experience opportunities for young people, giving the chance to work with friendly, creative professionals who have developed a theatre company from scratch. By taking part, young people can develop experience of producing, stage management, technical skills, playwriting, radio production, directing and performance alongside learning about the realities of building your own theatre company and staging your own work. They also host a regular arts podcast, broadcast on Wandsworth Radio and available online.



AGES 11-18

YOUR NOTES
I WANT TO FIND OUT MORE ABOUT...

THERE'S MORE SPACE FOR YOUR IDEAS ON PAGE 16



ALL AGES

CHOCOLATE FILMS

5 **G7 Battersea Studios 1, 80 Silverthorne Road, SW8 3HE** * chocolatefilmsworkshops.co.uk * 020 7793 4287

Chocolate Films is an award-winning digital media production and workshops social enterprise. They offer hands-on creative digital media workshops for all ages, including GoPro skills, documentary making, fiction film, stop motion animation, plus many more. This can all be done using their professional filmmaking equipment, or all on your phone so that students can continue to make films long after the workshop has finished. They also offer AQA Unit Award Scheme and Bronze and Silver Arts Award to help young people progress to the next level of their learning or career.



ALL AGES

ENABLE ARTS

6 **Staff Yard, Battersea Park, SW11 4NJ** * enablec.org/arts-about/

The Enable Arts team animates the borough throughout the year with exciting cultural programmes such as Wandsworth Arts Fringe and Wandsworth Artists' Open House. All their projects are creative, community focussed and invite Wandsworth residents of all ages to get involved, either as passionate participants or enthralled audiences.



CHOCOLATE FILMS PHOTOGRAPHY: © CHOCOLATE FILMS

G64 THEATRE FOR YOUNG PEOPLE

7 **Putney Arts Theatre, Ravenna Rd, SW15 6AW** * g64.org.uk * 020 8788 6935

G64 Theatre is an inclusive young people's theatre company in Putney. They run weekly drama and musical theatre classes for ages 4-19, holiday projects, professional masterclasses and opportunities to be involved in performance, directing, technical and backstage theatre. During the summer holidays they also run theatre making residential trips and have taken shows to the Edinburgh Fringe Festival. All classes and workshops take place on the stage at Putney Arts Theatre, and they offer a free taster session. They can offer assisted places and extra support in classes and shows.



ALL AGES

LIGHTBOX THEATRE

8 **c/o Katherine Low Settlement, 108 Battersea High St, SW11 3HP** * lightboxtheatre.co.uk * 07966 613367

Lightbox Theatre is a critically acclaimed theatre company that discovers untold or overlooked stories to create exciting new shows, often staged in unconventional spaces, produced for and by local people. Lightbox's engagement programme offers creative drama workshops for young people in school holidays and opportunities for emerging artists to gain experience working in professional theatre by shadowing their creative and backstage teams. Free or subsidised tickets to their shows are available for young people living in SW11.



AGES 11-18

NATIONAL OPERA STUDIO

9 **2 Chapel Yard, Wandsworth High Street, SW18 4HZ** * nationaloperastudio.org.uk * 020 8874 8811

The National Opera Studio is the UK's leading opera training organisation. Every year, the Studio collaborates with a local school to put on a large free performance as part of Wandsworth Arts Fringe. It also provides a range of work experience opportunities for those interested in working in the arts, and offers discounted tickets for students and under-16s to other NOS events taking place around London. The National Opera Studio also hosts free lunchtime concerts every month in Wandsworth featuring Young Artists of the National Opera Studio, which are open to all.



ALL AGES



THE DIRECTORY

OILY CART

10 Smallwood School Annexe, Smallwood Road, SW17 0TW * oilycart.org.uk * 020 8672 6329

Oily Cart create innovative, multi-sensory and interactive productions for babies and young children, and for young people with profound and multiple learning disabilities, an autism spectrum condition, or who are deafblind. Their productions tour throughout London, so young people working at different levels of Arts Award can experience and review an Oily Cart show. They offer work experience opportunities for young people aged 16+ at their Tooting base, a chance to join the production team in the workshops to learn about set and costume construction in the run up to a show.



ALL AGES



OMNIBUS THEATRE

11 1 Clapham Common Northside, SW4 0QW * omnibus-clapham.org * 020 7498 4699

Omnibus Theatre is a home of storytelling – a small place to encounter big ideas. Omnibus Theatre offers practical opportunities for young people to develop creativity, confidence and teamwork. These include Saturday morning drama for 5–16 year olds (bursaries available), Summer Workshops for under 11s, and drama workshops in local primary schools. Omnibus also offer theatre for under 11s, internships for university students, and have usher volunteering opportunities for the 18+.



ALL AGES



7 IN 6
45 CHARACTERS
LONDON
JOBS ARE IN
A CREATIVE

PUMP HOUSE GALLERY

12 Battersea Park, SW11 4NJ * pumphousegallery.org.uk * 020 8871 7572

Pump House Gallery provides a welcoming space to see, experience and participate in contemporary art. They deliver exciting exhibitions and artistic activities that challenge expectations and encourage all visitors to engage with contemporary art. Their InHouse projects run alongside each exhibition and include fortnightly family workshops. Open to all ages, these sessions are led by an artist and present fun, thought-provoking and creative ways for people to explore the exhibition.



ALL AGES



Inside Job:

CHOREOGRAPHER

Choreographers work with Directors, Producers, Designers and other members of the production team to plan, create and bring to life the dance or movement. They design sequences of steps and movements, usually accompanied by music, for dancers and other artists to perform.

"YOU CAN'T USE UP CREATIVITY. THE MORE YOU USE, THE MORE YOU HAVE."
MAYA ANGELOU

PUTNEY SCHOOL OF ART AND DESIGN

13 Oxford Road, SW15 2LQ * enablelc.org/psad * 020 8788 9145

Putney School of Art and Design has six studios specifically for painting, printmaking, drawing, ceramics & digital photography and offers over 100 courses each term. They offer life drawing and portfolio building to help with GCSE, A Level and Foundation courses. They run a range of half term and summer school intensive courses such as 'Make your Own Comic', 'Fashion Photography' and 'Art and Design for Young People'. They also offer work experience and volunteering for young people age 14–17, and each year they employ an apprentice in business administration and digital marketing.



AGES 11-18



ALL AGES

R.O.C.K.S! INTERNATIONAL ARTS LTD

14 Alton Activity Centre, Ellisfield Drive, SW15 4DR * 07492 501791

After-School R.O.C.K.S! and Camp R.O.C.K.S! are creative arts and play programmes that connect children to the arts and the arts to life. They provide a safe place to create, explore, and invent new ways of doing things for children in Roehampton aged 4+, run by professional artist-educators. There are also volunteer opportunities for Camp Buddies, where young people serve as role models on their programmes throughout the year. They are looking for young people aged 11+ who are energetic, have experience with creative arts, and the outdoors who are willing to try new things.





AGES 11-18

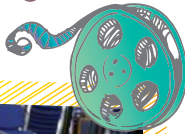
ROYAL COLLEGE OF ART

16 1 Hester Road, SW11 4AN * rca.ac.uk
The Royal College of Art (RCA) runs an annual programme of Studio Days, which gives young people the chance to make powerful connections between their own creative experiences and the work happening in RCA studios. Each Studio Day is an opportunity for a school group to engage with an RCA practitioner and visit their working environments. The RCA also run a programme of summer schools and Saturday workshops for 16+ young people. Young artists are also encouraged to visit the annual RCA graduate Show, which is open to all, where they can speak to the artists and designers behind the work.



£10.5 MILLION
THE AMOUNT CREATIVE INDUSTRIES ARE WORTH AN HOUR IN THE UK

SOURCE: DCMS NOV 2017



ROYAL ACADEMY OF DANCE

15 36 Battersea Square, SW11 3RA
* rad.org.uk * 020 7326 8000

The Royal Academy of Dance is one of the world's most influential dance education and examining organisations. The prestigious Dance School offers extra-curricular dance classes, for fun and fitness or to develop dance technique and skills. The RAD also runs summer schools and Boys Only! workshops, which are fun, high-energy classes full of creativity. The RAD offers GCSE and A Level Dance courses to help develop technical and expressive skills in young dancers, as well as nurturing knowledge and understanding of dance through performance, choreography and critical thinking.



ALL AGES



ROSE COMMUNITY CENTRE

17 22 Ascalon Street, SW8 4DL
* ninelemlondon.com * 07789 944508

The ROSE Community Centre in Nine Elms is a cultural hub on the Savona Estate run by Wandsworth Borough Council. It offers a range of different activities for local residents and those from further afield. Every Wednesday evening the ROSE runs free arts workshops for all ages. Currently, these workshops alternate weekly; one week the ROSE hosts animation and filmmaking classes run by Chocolate Films, and on the other artist Alex Parry runs Art Club at the ROSE, where anyone can come to learn new skills and develop their creative ideas. No booking necessary.



ALL AGES



AGES 16-18

SPECTACLE

18 Unit 25, 99-109 Lavender Hill, SW11 5QL
* spectacle.co.uk * 020 7223 6677

Spectacle is an independent production company who produce high quality, award-winning TV documentaries, short films and powerful campaigning videos with a special focus on social justice and urbanism. They run short and affordable training courses in video and documentary making from their Lavender Hill workshop. Spectacle also supports young creatives through its 20 day work experience programme to get hands-on practice in documentary production. Spectacle's former interns have often built on this experience to kickstart successful careers in the media industry.



"NEED A QUOTE TO GO HERE PLEASE DV NMXCV MXCV XCNV."

NAME NAME <!--



TARA THEATRE

19 Tara Arts, 356 Garratt Lane, Earlsfield, SW18 4ES * tara-arts.com * 0208 3334457

Tara Theatre is a multicultural, multi-purpose venue in Earlsfield. Their modern and fully-equipped venue is home to a world of stories, from the classic to the new. Tara is committed to enabling formal and informal education: they offer special rates to school groups, along with education packs, post-show talks, workshops and other resources to help make Tara Theatre as accessible as possible. There are also various volunteering opportunities available, from ushering shows to spreading the word in the local area, and they offer work experience and internship placements.



AGES 11-18

TAVAZIVA

20 Tavaziva c/o bbodance, Ensign House, Battersea Reach, Juniper Drive, SW18 1TA
* tavazivadance.com * 020 8237 7010

Tavaziva are a professional dance company who fuse ballet, contemporary and traditional African dance styles. They run projects with schools and community centres, and workshops for young people that create curtain-raiser performances at the opening of their shows. Their ZIVA Youth project inspires young men aged 12+ to dance and to work towards a career in dance. They also work with local youth groups to create unique projects showcasing African contemporary dance. Tavaziva encourage young people to visit to learn about the company, meet the dancers and watch rehearsals.



THEATRE503

21 503 Battersea Park Road, SW11 3BW
* theatre503.com * 0207 978 7040

Theatre503 stages the work of more debut and emerging writers than any other theatre in the country. They offer young people discounted tickets to their productions, and they welcome 16+ year olds who are interested in writing for theatre to get in touch about development opportunities. Theatre503 offer an annual course for young people aged 16+ who are not in education, employment or training, which introduces them to a career in theatre. There are various front of house opportunities for young people 16+. They also stage a Christmas show every December for ages 4+.



AGES 16-18

TRANSITION TOWN TOOTING

* transitiontowntooting.blogspot.co.uk

Transition Tooting Town (TTT) engages and connects people through festivals, carnivals, film screenings, craft workshops, food growing, talks and more. They offer fun volunteering opportunities alongside experienced facilitators. Volunteers work as part of a team to conceive, design, organise and facilitate events. TTT match volunteers' interests and professional development needs with suitable roles – for example, if you want to learn to use social media as a marketing tool you would work on that aspect of the event supported by a TTT team member with experience in the area.



AGES 16-18



AGES 16-18

WANDSWORTH SCHOOLS' MUSIC

22 The Professional Centre, Franciscan Road, Tooting, SW17 8HE * wandsworth.gov.uk/musicservices * 020 8871 8703

Wandsworth Schools' Music teach over 7000 children to play instruments and sing. They run the flagship Wandsworth Music Academy, a centre of musical excellence for more than 350 young musicians on Saturdays and Wednesday evenings. The academy is home to the borough's leading ensembles including 3 symphony orchestras, 2 jazz orchestras, steel pans, djembe, pop and rock bands and choirs. Musicians participate in a number of high profile events each year including performances at Royal Festival Hall, Royal Albert Hall, Wimbledon Tennis, Hideaway Jazz and concert tours abroad.



ALL AGES

Inside Job:

PLAYWRIGHT

Playwrights write the script of a play. Writing for theatre requires you to create the essentials of the play: the narrative, the characters, the language, and the tone. Plays can be a work of fiction, but there are also stage productions based on real events.

YOUR NOTES

I WANT TO FIND OUT MORE ABOUT...

THERE'S MORE SPACE FOR YOUR IDEAS ON PAGE 16



ALL AGES

WORK AND PLAY SCRAPSTORE

23 Hazelhurst Estate, 13 Blackshaw Road, SW17 0DA * workandplayscrapstore.org.uk * 020 8682 4216

Work and Play Scrapstore are a re-use charity providing art, craft, design and play materials for schools, students, artists, community organisations and families, all donated by eco-friendly businesses as surplus or waste. Young people can attend small workshops to learn an artistic activity, or participate in workshops run at their nursery, school, college or at local community events, such as their 'Dress A Teddy' workshops in nurseries and their Origami workshops at the Scrapstore. Young people 16+ can join Scrapstore to collect materials for their own projects.



WORLD HEART BEAT MUSIC ACADEMY

24 58 Kimber Road, Wandsworth, SW18 4PP
* worldheartbeat.org * 020 8870 3042

World Heart Beat Music Academy is an after school and weekend music academy that provides high-quality music tuition and exciting personal development opportunities to young people. They teach a rich music programme from grassroots to early-career level in all instruments including Tabla, Celtic fiddle and Gypsy violin. World Heart Beat has a specialist Jazz programme, 51st State Band, Orchestra, and several ensembles, classes in grade 5 theory, radio production, composition, song-writing, film music and an accredited Arts Awards programme (Bronze, Silver and Gold).



ALL AGES



THE LOWDOWN

THIS JOURNAL BELONGS TO:

INSERT NAME HERE

MY CREATIVE JOURNEY

THIS MONTH'S MINI GOALS

THINGS I REALLY ENJOYED

NAILING IT what I've done well...

Contacts...

SEEK OUT FEEDBACK ASK SOMEONE YOU RESPECT ABOUT HOW YOU ARE GOING

GOALS FOR THIS YEAR

NEXT STEPS

1

2

3

4 THINGS I'VE LEARNT...

1











2


3



4

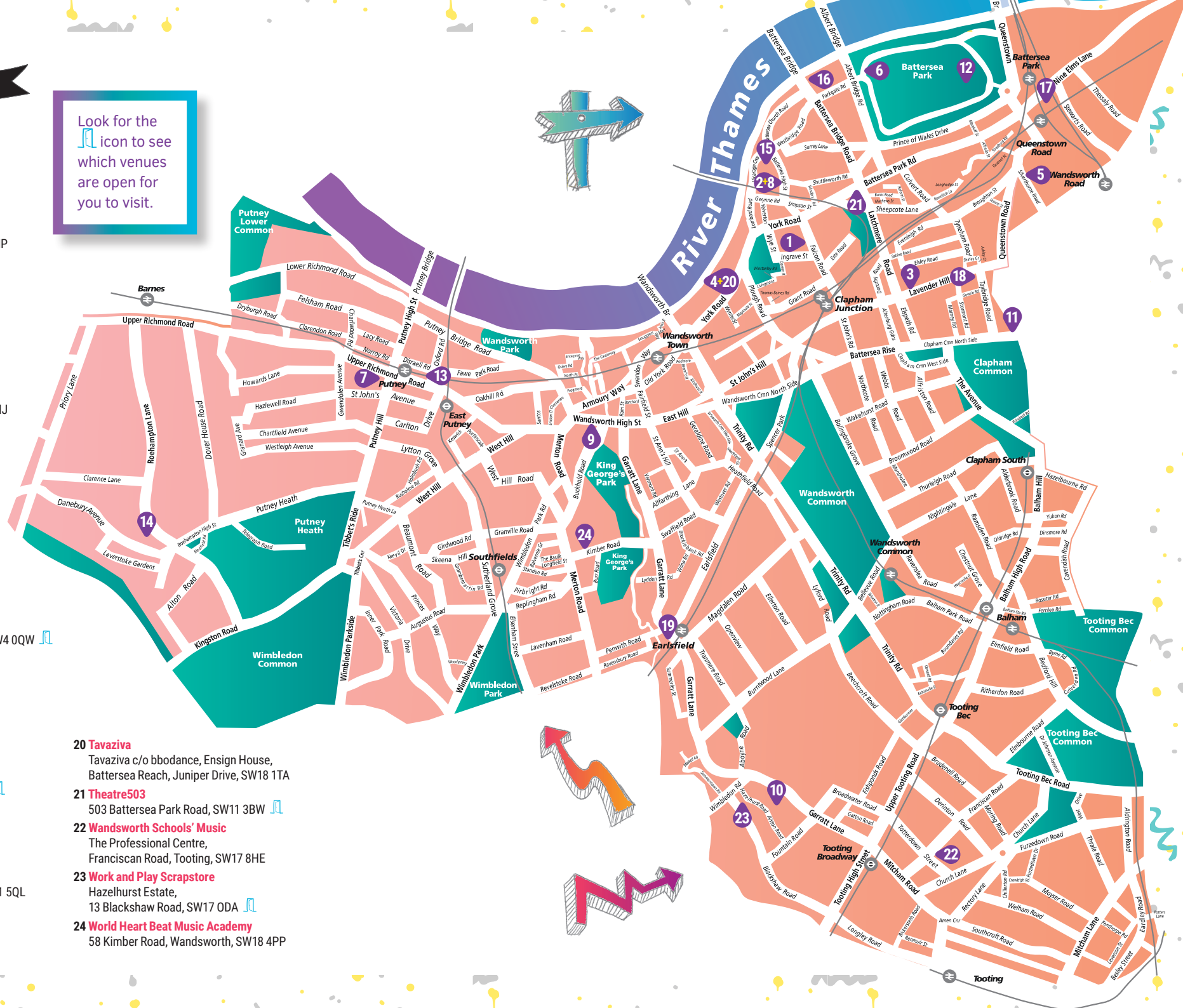
FIND US...

THE VENUES...

- 1 ArtLacuna**
48 Falcon Road, SW11 2LR
- 2 Baked Bean Company**
108 Battersea High Street, SW11 3HP
- 3 Battersea Arts Centre**
Lavender Hill, SW11 5TN 
- 4 bbodance**
Ensign House, Battersea Reach, Juniper Drive, SW18 1TA 
- 5 Chocolate Films**
G7 Battersea Studios 1, 80 Silverthorne Road, SW8 3HE
- 6 Enable Arts**
Staff Yard, Battersea Park, SW11 4NJ
- 7 G64 Theatre for Young People**
Putney Arts Theatre, Ravenna Rd, SW15 6AW
- 8 Lightbox Theatre**
c/o Katherine Low Settlement, 1108 Battersea High St, SW11 3HP
- 9 National Opera Studio**
2 Chapel Yard, Wandsworth High Street, SW18 4HZ 
- 10 Oily Cart**
Smallwood School Annexe, Smallwood Road, SW17 0TW
- 11 Omnibus Theatre**
1 Clapham Common Northside, SW4 0QW 
- 12 Pump House Gallery**
Battersea Park, SW11 4NJ 
- 13 Putney School of Art and Design**
Oxford Road, SW15 2LQ 
- 14 R.O.C.K.S! International Arts Ltd**
Alton Activity Centre, Ellisfield Drive, SW15 4DR 
- 15 Royal Academy of Dance**
36 Battersea Square, SW11 3RA 
- 16 Royal College of Art**
1 Hester Road, SW11 4AN 
- 17 ROSE Community Centre**
22 Ascalon Street, SW8 4DL
- 18 Spectacle**
Unit 25, 99-109 Lavender Hill, SW11 5QL
- 19 Tara Theatre**
Tara Arts, 356 Garratt Lane, Earlsfield, SW18 4ES 

Look for the  icon to see which venues are open for you to visit.

- 20 Tavaziva**
Tavaziva c/o bbodance, Ensign House, Battersea Reach, Juniper Drive, SW18 1TA
- 21 Theatre503**
503 Battersea Park Road, SW11 3BW 
- 22 Wandsworth Schools' Music**
The Professional Centre, Franciscan Road, Tooting, SW17 8HE
- 23 Work and Play Scrapstore**
Hazelhurst Estate, 13 Blackshaw Road, SW17 0DA 
- 24 World Heart Beat Music Academy**
58 Kimber Road, Wandsworth, SW18 4PP



**BATTERSEA
ARTS CENTRE**



bbodance



**TAVA
ZIVA**

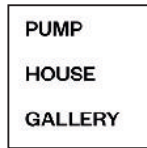


managed by

enable
Putney school of
art & design



Nine Elms
On the South Bank



managed by

enable
leisure & culture