

# Brightside

Issue 193 March 2021

The magazine of Wandsworth Council

Find out about  
vaccinations

Page 7

Council tax freeze

Page 4







Love giving them a home

#lovetofoster

Call us now on (020) 8871 6666



# Inside

March 2021

Cover: A vaccination session at The Junction Health Centre, Clapham Junction

## Council tax freeze

PAGE 4

## Get your job

PAGE 7

## How safe is the vaccine?

PAGE 8

## Winstanley and York Road regeneration update

PAGES 12 - 13

## Tackling climate change

PAGES 16 - 17

## Town centre improvements

PAGE 19

## Arts and culture past and future

PAGES 26 - 27

## What's On

PAGES 28 - 29



To obtain a copy of Brightside in large print please telephone (020) 8871 7266 or email [brightside @ wandsworth.gov.uk](mailto:brightside@wandsworth.gov.uk)

### YOUR BRIGHTSIDE

Your Brightside is distributed by Lbox Communications. We expect all copies of Brightside to be delivered to every home in the borough and pushed fully through the letterbox.

It is produced by the council's corporate communications team. It is the only publication delivered to every household in the borough. We would like to thank all our advertisers for their support. Brightside will consider display advertisements from non-council bodies (excluding recruitment) and reserves the right to decline advertisements. The council neither accepts responsibility for the content of nor endorses any non-council advertisements.

• Editorial (020) 8871 8902. • Advertising (020) 8871 7266

If you have a comment about the magazine please telephone: (020) 8871 8902/6173 or email: [brightside@wandsworth.gov.uk](mailto:brightside@wandsworth.gov.uk).

Brightside is printed on environmentally friendly paper, please recycle.

# Council tax freeze

Wandsworth Council is leading the way in London by freezing its general element of the council tax, with Wandsworth residents again benefiting from one of the lowest council tax bills in the country.

Cllr Ravi Govindia, Leader of the council, said that helping residents during the Covid pandemic, particularly financially, was its top priority: "Years of hard work and prudent financial management have allowed us to do this and I'm now delighted to say that because of the strong building blocks we have in place, Wandsworth is in the position to be able to do the best for its residents by freezing its share of the general council tax charge for the next financial year."

The council is also planning to set up a new charitable trust to take donations from higher band council tax payers and others, should they want to contribute a little bit more to help those who may be financially worse off.

There will be a three per cent increase in the part of the bill used to fund social care. The Mayor of London, Sadiq Khan, is proposing to increase his share of council tax by 9.5 per cent, meaning his precept will rise by £31.59 a year. This takes Wandsworth's overall average Band D council tax bill for the entire year to £845.44 - of which £363.66 is payable to the Mayor.

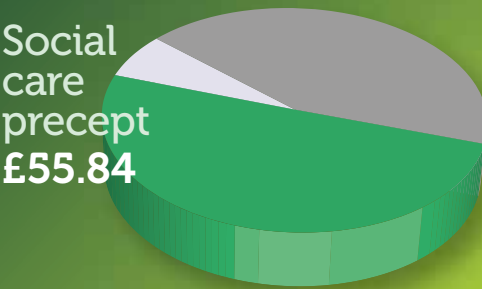
Wandsworth Council Tax  
(Band D)

**£845.44**

Contribution to the  
Mayor of London

**£363.66**

Social  
care  
precept  
**£55.84**



Wandsworth Council  
general expenditure

**£425.94**



## Switch to Direct Debit and win £200!

Pay your adult social care invoices by Direct Debit for a chance to win £200 in our quarterly price draw.

- Set up a Direct Debit with your bank and payments are made automatically. You stay in control - it can be cancelled at any time.
- Everything is protected by the Direct Debit Guarantee - you'll get a full refund from your bank if there's a mistake by the council or the banking system.
- You can trust Direct Debit to be secure - it takes away the hassle of paying bills - queuing at the bank and filling out cheques.

Simply complete the enclosed Direct Debit mandate and return it to us. We will do the rest.

As a thank you for paying by Direct Debit we will be starting a free draw where you can win £200. The draw will take place in April, July and October.

To be entered into the draw in April 2021 all you must do is pay your adult social care invoices by Direct Debit - it's that easy!

**Sign up to the direct debit scheme now!**







“

It is hard to believe that it has been a year since the Covid-19 pandemic hit us.

During these painful times, lives have been disrupted and livelihoods lost but the saddest of all has been the loss of lives. It is with much hope that we look to better days coming over the horizon.

Many of us have reached out to support our neighbours and others in our community less able to cope with the challenges. Across the borough community groups, faith groups and neighbourhoods have shown how strong and caring our community is.

So at the council – understanding the difficulties that many face in our unprecedented times - we have decided to ease the financial burden on residents by freezing our share of the council tax. How are we able to do this is? I am proud to say that this has been possible because of years of careful financial management - saving when we could - and preparing for the ‘rainy day’.

The council tax freeze will not affect our ability to continue to provide the services upon which residents rely.

Throughout last year we have maintained weekly bin collections, kept the borough’s streets clean and ensured our parks and commons remain open and welcoming. The borough’s open spaces have helped tremendously in maintaining good mental health and general wellbeing.

The council has prioritised supporting schools to remain open safely with the with the aim of minimising the damage to children’s education. Where this has not been possible, we have provided thousands of laptops and other devices to enable home learning. During school closures and holidays we have ensured that

children entitled to free school meals continue to have this support. The library service has played its part in helping parents with online events like children’s songs and stories.

We are fortunate in Wandsworth to have a thriving business sector, and our Economic Development Office has worked tirelessly to distribute £71.7m of grants to almost eight thousand local businesses to help them weather this storm. We have pledged to continue our work with the Chamber of Commerce and the Business Improvement Districts as current restrictions ease.

Throughout it all, council staff have been carrying on, doing their jobs – social workers, librarians, teachers, housing estate managers, road maintenance teams, gardeners – all unsung heroes serving the people of Wandsworth. I’d especially like to thank our refuse collectors and road sweepers who day after day were on the front line keeping this borough clean. Many of you have shown your appreciation to them directly – I know this has meant a lot to them these past few months.

As the vaccination roll-out gathers pace and restrictions ease, let’s remain careful and responsible to avoid a return to another lockdown.

Please stay safe and help keep others safe too.

”



Cllr Ravi Govindia Leader, Wandsworth Council



# Help to get vaccinated

People who are unable to make it to their vaccination appointment can get help from Wandsworth Community Transport.

Mr Khonboker was helped by the service to get to appointments for both his jabs. He said: "I don't know how I would have got there if it wasn't for Wandsworth Community Transport, they were brilliant."

WCT is also doing home shopping for people who are self isolating and, now that virtually all their regular passengers have been vaccinated, hopes to start taking them out to do their shopping again soon. Call **020 8675 7460** to find out more.



“ I don't know how I would have got there if it wasn't for Wandsworth Community Transport, they were brilliant ”

## Get tested

One in three people who have Coronavirus don't show any symptoms but can still pass on the virus.

People without symptoms can get fast, free Lateral Flow tests at centres in Wandsworth. Results are available within minutes and you are encouraged to get frequent tests if you go out to work, are out and about or just want to be sure that you are not silently spreading the virus.

For people who do have symptoms, you can get a 'PCR' test at a centre or can send off for a test you can do yourself at home. For more information visit [wandsworth.gov.uk/testing](https://www.wandsworth.gov.uk/testing)

## Financial support

If you are struggling financially, the council has various schemes that can help, including the Discretionary Social Fund which provides help with fuel and food costs to the most vulnerable households in crisis. **Between April and December 2020, the council made more than 2500 awards.**

There are also Discretionary Housing Payments for people receiving housing benefit or universal credit who need help with housing costs and the Discretionary Social Fund for people who have had their income reduced because of Covid and are now reliant on universal credit.

Visit [wandsworth.gov.uk/housing/benefits-and-support/discretionary-support-grants](https://www.wandsworth.gov.uk/housing/benefits-and-support/discretionary-support-grants). If you do not have access to the internet, call Citizens Advice Wandsworth for help on **020 4529 0674** between 10am and 12 noon, Monday to Friday.





# Get your free Covid jab

As Brightside went to press, around 60,000 Wandsworth residents and more than 250,000 people across south west London have had their Covid-19 vaccination – with many more jabs being done every day.

Vaccinations were offered first to the people in most need, so if you haven't had been called yet, don't worry, your turn will come. But if you are over 65, clinically extremely vulnerable, a health and care worker or you live in a care home, contact the NHS to book an appointment now:

- Visit [nhs.uk/conditions/coronavirus-covid-19/](https://www.nhs.uk/conditions/coronavirus-covid-19/)
- Call 119 free of charge anytime between 7am - 11pm seven days a week
- If a suitable slot is not available, call your GP practice.

The vaccine is one of our main ways for protecting people and reducing the impact of the virus on people's health and on healthcare services, so everyone offered a jab is encouraged to get one.

Remember: The vaccines have been proved to be safe and effective; they do not contain anything of foetal or animal origin; and they have been approved by the British Islamic Medical Association.

For detailed answers to common questions about the vaccines, and guides in other languages, visit [wandsworth.gov.uk/covid-19-vaccine](https://www.wandsworth.gov.uk/covid-19-vaccine).





# How safe is the COVID-19 vaccine?

As with any medicine, vaccines are highly regulated products. Any vaccine - including the coronavirus vaccine - must go through strict clinical trials and safety checks before it is licensed.

The Medicines and Healthcare Products Regulatory Agency (MHRA), the official UK regulator, has said that both of the coronavirus vaccines have excellent safety profiles and offer a high level of protection.

## **Should people expect any side effects from the vaccine?**

This is something the MHRA always considers when assessing potential vaccines. Independent data has confirmed that the vast majority of reported side effects are mild and short-lasting, including a sore arm and fatigue – in other words, a normal immune response to a vaccine.

## **Can Muslims have the vaccine under Islamic law?**

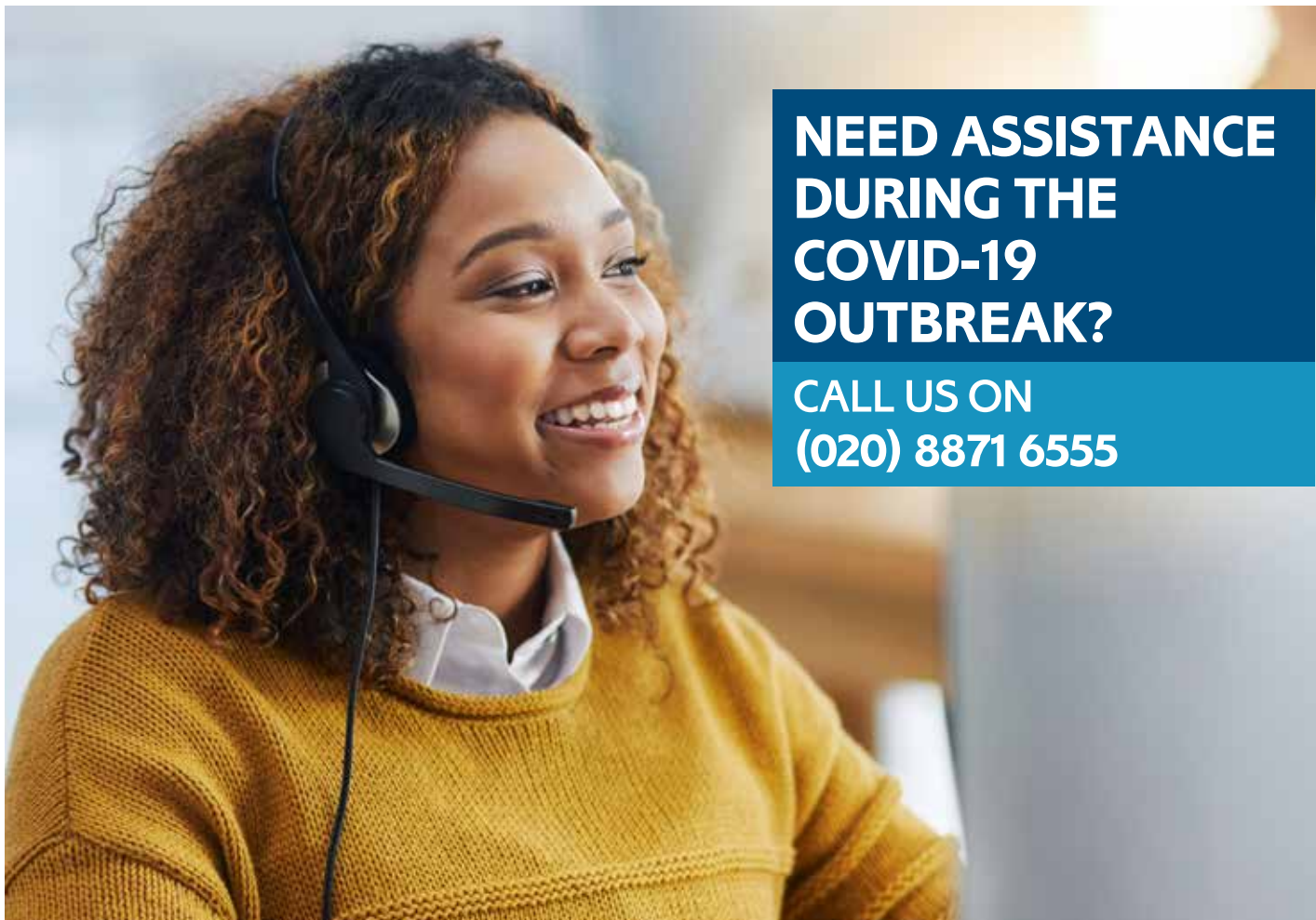
Yes, after discussion with experts, the British Islamic Medical Association encourages Muslims to have the Covid vaccine, as advised by their medical practitioner.

## **Could the vaccine be less effective for black people and other ethnic groups?**

No, there is no evidence that either of the vaccines will work differently among different ethnic groups. Around ten per cent of the Pfizer and Oxford/AstraZeneca vaccine trial participants were black or African.

## **Does the vaccine include any animal products?**

There is no material of foetal or animal origin in either vaccine. All ingredients are published on the MHRA's website. Search for MHRA on Google.



**NEED ASSISTANCE  
DURING THE  
COVID-19  
OUTBREAK?**

**CALL US ON  
(020) 8871 6555**





# Dedicated to supporting small businesses in Wandsworth



[wandsworthenterprisehub.com](https://wandsworthenterprisehub.com)

A one-stop portal designed to help you **Start, Reset & Grow** your Wandsworth business during difficult times.

Free business support programmes, workshops, webinars, 1-1 advice surgeries, Brexit support and more...

wandsworth  
enterprise **hub**





# Wandsworth gets connected

Wandsworth residents struggling to work, run businesses and learn from home have been helped by access to some of the fastest full-fibre broadband in the UK.

Over the past three years the council has worked with a number of broadband providers to ensure residents have good access to online services.

Super-fast broadband provider Community Fibre has linked more than 30,000 homes in Wandsworth to its full fibre network, including more than 70 per cent of Wandsworth's council homes.

Meanwhile G.Network is installing a new, state-of-the-art, contiguous full fibre broadband infrastructure that will guarantee ultrafast download and upload speeds to more than 100,000 homes and businesses in Wandsworth.

And Openreach has also connected thousands of local homes and businesses to its ultrafast network. Consumers can check what infrastructure they have on the Openreach fibre checker and then take a service with the provider of their choice.

Council leader Cllr Ravi Govindia said: "Lockdown has shown just how important it is for residents and businesses to have fast, reliable and affordable internet access. I'm delighted that from the start of lockdown our many tens of thousands of residents have been able to benefit from some of the best internet services in the country."

Community Fibre is providing a free full-fibre internet connection to vulnerable households in Wandsworth to ensure children's education does not suffer as a result of poor connectivity. The free service will be provided for 12 months after installation.

At the end of the free period households can either pay to keep the service or cancel it by returning the router. There are no strings attached.

To find out if you are eligible contact your landlord or estate manager.

“ Lockdown has shown just how important it is for residents and businesses to have fast, reliable and affordable internet access. ”



# Laptops help people learn

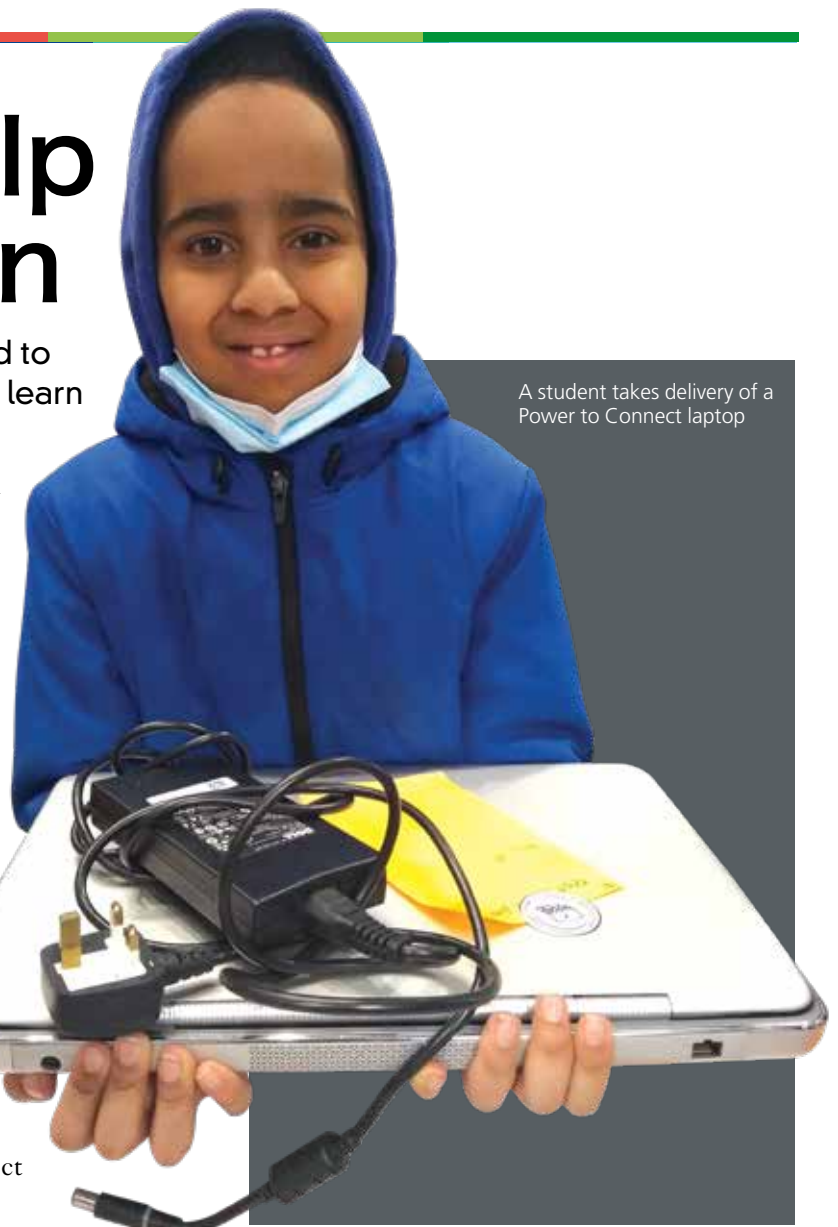
Hundreds of laptops have been donated to local families to help ensure children can learn from home.

The council set up Power to Connect last April in partnership with Battersea Power Station and so far the scheme has donated more than 1,000 devices to families that need them. In total almost 5,000 laptops have been distributed to Wandsworth families during the pandemic through various schemes, including direct donations from the council. During the Christmas holidays the council ran an online scheme to enable vulnerable children to learn new skills, access tuition and take part in fun activities to help prevent them becoming isolated.

Families with children who receive free school meals have been provided with supermarket vouchers during term time and school holidays.

Mental health support services have been set up in schools to support young people and schools have been supported to reopen safely when they are able to, including testing arrangements.

Find out how you can support the Power To Connect Scheme at [powertoconnect.co.uk](http://powertoconnect.co.uk)



A student takes delivery of a Power to Connect laptop



Some of the borough's most vulnerable adults have also been provided with laptops so they can access adult learning courses including English language classes, digital skills and maths.

200 devices, funded by the GLA, have been distributed by the council with the help of local community groups.

The council's Lifelong Learning service has moved many of its classes online, with a focus on helping adults to learn skills that will gain them employment.

Find out about courses on offer at [wandsworthlifelonglearning.org.uk](http://wandsworthlifelonglearning.org.uk)

Fran Jukes from the Katherine Low Settlement said the donation of ten laptops will mean all its maths students can access classes on a computer, instead of struggling to learn using a smartphone, or giving up classes completely.



# Winstanley and York Road Regeneration

**CLLR KIM CADDY, CABINET MEMBER FOR HOUSING VISITED THE FIRST BLOCK OF NEW HOUSES COMPLETED AS PART OF THE WINSTANLEY ESTATE REGENERATION.**

Mitchell House, in Plough Road, has eight floors of 21 two-bedroom homes and 25 one-bedroom homes.

Six of the 46 flats have been specially adapted to accommodate residents who may need wheelchair access now or in the future, including moveable worktops, wide corridors and adaptable bathrooms.

Speaking after touring the homes, Cllr Caddy said: "I'm delighted with the building and the residents should be moving in soon..

"Six of the flats are wheelchair accessible, so there is extra space in the hallways and there are moveable worktops in the kitchen.

"The 46 flats have been built to new, modern standards with improved safety features and energy efficiency standards.

"It is important to us that we listen to residents and one of the things residents have told us is really important is outside space. All of these flats have balconies or private external space.

"I'm so impressed with the standard of the flats and the quality of the build."

The properties have been allocated to existing estate residents who are moving from buildings being redeveloped as part of the regeneration scheme. They include Scholey House, Kiloh Court and Jackson House.



Read more at [wandsworth.gov.uk/winstanleyyorkroad](https://www.wandsworth.gov.uk/winstanleyyorkroad)





The council's plans to build 2,550 new homes on the Winstanley and York Road Estates in Battersea have received a huge boost after planning permission was granted.

The news comes after the Greater London Authority gave the regeneration scheme the green light just before Christmas.

It is expected to create 88 permanent jobs for local people, 3,360 temporary construction jobs and an overall boost to the local economy of £207.6m.

Built by Winstanley & York Road Regeneration Partnership, a joint venture between Taylor Wimpey and Wandsworth Council, the development will provide 35 per cent of the homes for social rent, London affordable rent or shared ownership, while the rest are for private sale or rent.

The regeneration programme includes building a state-of-the-art leisure centre, a community centre, a library, a children's



Mitchell House

centre and nursery, a new local office for Workmatch which helps people into jobs, a health centre and a new 2.49 hectare public park.

The plans for the estate were drawn up following a huge consultation with estate residents and neighbours over a six year period. Every secure council tenant will be offered a council home in the scheme to meet their individual housing needs, eliminating over-crowding. All resident council leaseholders will be offered an affordable opportunity to buy a home on the estate.

Leader of the council Cllr Ravi Govindia said: "We have made a commitment to every secure council tenant and resident leaseholder that they will have the right to a new, improved property and I am confident that having the opportunity to live in better, higher quality, sustainable homes will genuinely improve people's lives."



# DOMESTIC ABUSE AND COVID-19

**Are you isolated at home  
and feeling unsafe?**

**Are you frightened of your partner  
or a family member?**

**Are you worried that someone you know  
is experiencing abuse?**

**National and local services are still here for you:**

**National Domestic Violence Helpline 24/7**  
0808 2000 247

**Safety Net Independent Domestic Violence Advisors**  
Monday to Friday 9am-5pm  
020 7801 1777

**Metropolitan Police**  
If in an immediate danger call 999  
For non-emergencies, dial 101

**Crimestoppers - Anonymous line**  
0800 555 111

**During lockdown  
you can leave if  
you're at risk!**



**METROPOLITAN  
POLICE**





# Have you received your census letter?

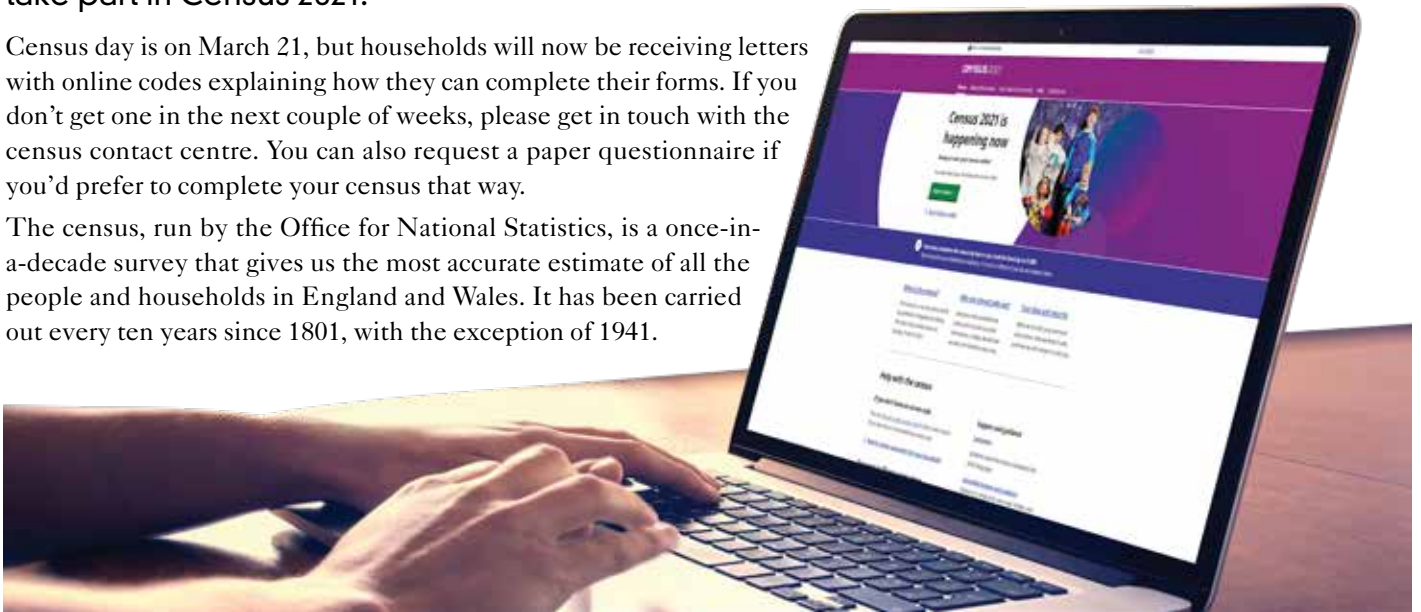
**census**  
2021

For more information, and to find out how to get help, visit [census.gov.uk](https://www.census.gov.uk) or call the census contact centre on 0800 141 2021.

Households across Wandsworth are being asked to take part in Census 2021.

Census day is on March 21, but households will now be receiving letters with online codes explaining how they can complete their forms. If you don't get one in the next couple of weeks, please get in touch with the census contact centre. You can also request a paper questionnaire if you'd prefer to complete your census that way.

The census, run by the Office for National Statistics, is a once-in-a-decade survey that gives us the most accurate estimate of all the people and households in England and Wales. It has been carried out every ten years since 1801, with the exception of 1941.



## The Mayor of London and London Assembly elections will be held on Thursday 6 May 2021

Many areas of London life are affected by the work of the Mayor of London and the London Assembly, such as policing, transport, housing, planning and the environment.

If you want to vote you must make sure you're registered. If you're not registered (e.g. if you have moved recently), you can do so at [gov.uk/register-to-vote](https://www.gov.uk/register-to-vote)

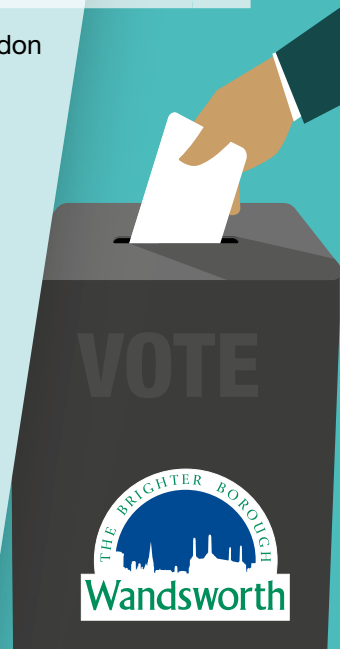
We'll be working tirelessly to ensure that these elections will be delivered safely. However, expect voting to look different this year. You will need to **wear a mask** and **socially distance**. You should also **bring your own pen or pencil**.



If you'd rather not vote in person during this time, you can apply for a postal vote by completing an application form (if you're not a postal voter already). The form can be downloaded at [wandsworth.gov.uk/postalvote](https://www.wandsworth.gov.uk/postalvote) or call us on **020 8871 6023** if you'd like one posted to you.

Voting by post is a convenient and secure way of voting. If you plan to vote by post at these elections, please apply as early as possible.

Visit [wandsworth.gov.uk/vote](https://www.wandsworth.gov.uk/vote) for more information.



# Climate change – how are we doing?

THE COUNCIL HAS ASSESSED THE IMPACT SO FAR OF ITS WANDSWORTH ENVIRONMENT AND SUSTAINABILITY STRATEGY AND COME UP WITH NEW ACTIONS, INCLUDING:

- Developing a decarbonization strategy that will target the highest emitting buildings in the borough
- Switching all council vehicles to zero emissions options
- Developing a new walking and cycling strategy
- Releasing its first biodiversity strategy to protect and maintain the borough's biodiversity
- An extensive tree planting programme with a further 600 trees planted by April 2022 as well as 1000 new street trees. 750 tree gators have been installed to help the new trees grow

Find out more about what the council is doing to tackle climate change in Wandsworth and read more about the Biodiversity and Walking and Cycling Strategies at [wandsworth.gov.uk/climatechange](https://www.wandsworth.gov.uk/climatechange)

What we have achieved in the past 12 months

- Switched all council electricity to 100 per cent zero carbon electricity
- Hosted the first annual Climate Summit attended by over 650 residents
- Secured £1m to support home improvements to homes with poor energy efficiency
- Expanded the School Streets scheme to 19 schools

## Wandsworth Biodiversity Strategy



Wandsworth is home to 3,149 different individual species and 24 different biodiversity habitats, including nationally important heathland on Wimbledon Common and Putney Heath, rivers and lakes, woodlands, grasslands and, of course, private gardens.

The strategy identifies five key principles which will guide future actions

**1 Better:** improving the quality of existing priority habitats and landscapes

**2 Bigger:** expanding the areas of priority habitats and landscapes

**3 More:** creating new areas of habitat or new landscapes

**4 Joined-up:** improving links and connectivity between habitats at the landscape scale

**5 Promote:** informing local individuals and communities about how they can understand and appreciate priority habitats and landscapes and crucially the role they have in delivering measures to nurture wildlife on their doorstep





## Wandsworth's Walking and Cycling Strategy

This will help increase the amount of people who chose walking and cycling as their preferred methods of transport, making them safer and normalising cycling as an everyday method of getting about

Key actions include;

- Auditing the current cycling routes in Wandsworth and using data and feedback to optimise and expand on current cycle routes
- Improving signage and assessing routes to ensure they are accessible to a wide range of users, including those with limited mobility
- Improving the quality of public spaces and paths in the borough's town centres, high streets and shopping parades
- Expanding work with third-party operators including Southwestern Railway and Transport for London. This will include cycle hire such as Santander Cycles and dockless bikes like Uber's Jump bikes, and e-scooters as well as the links with public transport

### Support with solar and grants for green homes

Wandsworth Council has partnered with Solar Together to help Wandsworth residents switch to renewable energy through a group-buying scheme for solar panels and battery storage. Registration for the scheme is now open and residents can register their interest by visiting [solartogether.co.uk/wandsworth](https://solartogether.co.uk/wandsworth)

You could also be eligible to apply for a Green Home Grant to cover two thirds of the cost of energy efficiency or low carbon heating home-improvements. Find out more at [wandsworth.gov.uk/green-homes-grant](https://wandsworth.gov.uk/green-homes-grant)



# Wandsworth tops EV league

Department for Transport figures show that at 591, Wandsworth has the highest number of electric vehicle charging points than any other single UK local authority.

Another 200 lamp column chargers will be installed this spring. The annual number of plug-in vehicles registered in the borough has grown from 252 in 2012 to more than 5,000 today – with numbers rising by more than ten per cent every three months.

Wandsworth has embraced electric vehicle technology as one strand of its efforts to tackle climate change and improve local air quality. Most of the borough's charging sockets have been fitted to lampposts to reduce pavement clutter and keep footpaths free for pedestrians. The power supply for these chargers, which have been installed in partnership with ubitricity, plus those installed by Source London, comes only from renewable sources of energy.

Find out more at [wandsworth.gov.uk/electric-vehicles](http://wandsworth.gov.uk/electric-vehicles)



# Settlement support

All European nationals who wish to secure their right to live, work, study and receive benefits and services must apply to the EU Settlement Scheme before June 30.

The council works in partnership with Citizens Advice Wandsworth to provide information and support. Contact the free EU Project advice service on 0203 559 2019, email [euadvice@cawandsworth.org](mailto:euadvice@cawandsworth.org) or visit [www.cawandsworth.org/eu](http://www.cawandsworth.org/eu)

**Are you or someone in your family from a European country?**  
If you arrived in the UK before 31 December 2020, you must apply to the EU Settlement Scheme by **30 June 2021** to secure your rights and to continue living in the UK.

It is based on **how long you have lived in the UK** and employment or income do not count.

<p><b>✓ You need to apply if you are an adult or a child and:</b></p> <ul style="list-style-type: none"> <li>• are an EU, EEA, or a Swiss National, OR</li> <li>• are the non-EU family member of an EU national</li> </ul>	<p><b>✗ You don't need to apply if you:</b></p> <ul style="list-style-type: none"> <li>• are Irish</li> <li>• have Indefinite Leave to Remain</li> <li>• are British</li> </ul>	<p><b>✓ You need to apply even if you:</b></p> <ul style="list-style-type: none"> <li>• are married to a British national</li> <li>• have children who grew up in the UK</li> <li>• have Permanent Residence</li> <li>• have been living in the UK for a long time were born in the UK (unless you are British)</li> </ul>
---	---	--

**You can apply by using a smartphone\*:**

- Download the EU Exit ID Check App
- Use the app to verify your documents
- Complete the application on any device (smartphone, tablet or laptop)
- Submit your application and wait to hear what status you have been given
- Receive your status by email – always check you were given the correct status in accordance with the length of your UK residence and documents provided

**What do you need to apply\*:**

- a valid passport, ID card or biometric residence card
- proof that you live in the UK
- declare any criminal convictions

The EU Settlement Scheme is free and it's worth applying now: [www.gov.uk/eusetledstatus](http://www.gov.uk/eusetledstatus).

## Nadeem's story

Nadeem is originally from Pakistan and also holds Italian nationality. He knew that he needed to apply for him and his family for a new type of immigration status, but he was unable to pay for advice from a solicitor. He contacted the EU Project and, with the help of an Italian speaking adviser, successfully submitted applications for himself and his family.

He said: "My Settled Status helps me consider pursuing a career in social care - something I wanted to do for a long time as I like to help people in my community. I advise everyone who is a dual national like myself or is not European but has a family member who is to contact Citizens Advice and get help applying."



# Town centre improvements

WORK TO FUTURE-PROOF THE BOROUGH'S TOWN CENTRES CONTINUES, WITH WORK PROGRESSING WELL IN PUTNEY AND PLANS TO REIMAGINE WANDSWORTH TOWN IN THE PIPELINE.

Phase one of improvements to Putney High Street are on course to be finished by May, with a second phase expected to get underway soon after.

The first phase has already delivered improvements including pavement repaving and widening, safer 'Copenhagen Crossings' at side streets, a loading bay outside Tesco to prevent delivery vehicles blocking the road, a 20mph speed limit, new 'parklets', upgraded street lights, uplighting St Mary's church and Putney Bridge, more cycle parking and contraflows, decluttering and more street trees, including a pollution guzzling 'city tree'.

The next phase of works which are set to get underway later this year and which have been part funded by a new £1.058m Government grant will include:

- Redesigning the Lower Richmond Road junction to make the crossing simpler and easier to navigate, including improvements for cyclists
- Connect the High Street to the River Thames more directly and enhancing existing waterfront areas
- Relocating the taxi rank from outside the railway station to reduce congestion
- Lobbying TfL to simplify the busy junction of Putney High Street/Upper Richmond Road to make it safer



New paving on Putney High Street

## Wandsworth residents are being asked to comment on a plan to guide development in the Wandle Delta area.

The 'Supplementary Planning Document' will explore how best to manage the comprehensive redevelopment of a number of sites between Armoury Way and the river. The aim is to revitalise the area, create more public open space and enable the creation of new homes and jobs.

It will also look at better connecting the riverside area with the rest of the town, including the station, the town hall, the town centre and the Ram Brewery quarter.

Key sites will be Causeway Island, land around the gasholder site in Armoury Way, Dormay Street, Osiers Road, Feathers Wharf and Frogmore. It will also look at the area around Wandsworth Bridge roundabout, including McDonalds, Smugglers Way and the Wandsworth Bus Garage.



A public consultation on the Wandle Delta document is open until March 21. Find out more, and have your say, at [Wandsworth.gov.uk/wandledeltaSPD](http://Wandsworth.gov.uk/wandledeltaSPD)

# Libraries continue to flourish

During the pandemic, Wandsworth libraries have continued to serve borough residents – even during lockdowns.

The borough has 11 libraries and a home library service and is managed on behalf of the council by GLL

Wandsworth's libraries are popular and well-used. In 2019-2020, for the third year in a row, Wandsworth Libraries issued the highest number of books in London.

Before the pandemic the service was already offering a comprehensive list of online resources, including e-books, music, newspapers and magazines, research tools including encyclopaedias and directories, and history and ancestry resources, including free access to the popular Ancestry site.

The busy programme of events has been largely moved online, including baby rhyme time, children's song, craft and story times and events such as quizzes and opportunities to meet authors.

Visit [facebook.com/wandsworthlibrarians](https://facebook.com/wandsworthlibrarians) to find out more and join in.

The service is exploring new ways to ensure that libraries serve the specific needs of each community in Wandsworth. This will be initially piloted at two libraries – Putney and Wandsworth Town – with a view to rolling the principle out borough-wide if it is successful. Plans could include affordable work hubs and more flexible use of space.

The service is exploring how to strengthen connections with local schools, as well as offering pop up council services. There will be public engagement on these new ideas in the upcoming months.



Take part in Bobby Seagull's online family quiz.

The new Wandsworth Town library.



At a time when many councils are closing libraries, Wandsworth is investing in them. The council has committed investment to improve library buildings at the Battersea, Earlsfield, Tooting and York Gardens branches.

Councillors have also approved plans for a new Northcote Library while estate regeneration schemes will deliver major improvements at York Gardens and Roehampton. Work is also continuing for a brand-new Wandsworth Town library as part of a partnership regeneration scheme with South Thames College.

[#gettoknowyourlibrary](https://twitter.com/gettoknowyourlibrary)

Visit the library service website at [better.org.uk/library/london/wandsworth](https://better.org.uk/library/london/wandsworth)





# Tunnel visions for Arch 42

A bold design has been chosen to decorate the 'gateways' to Arch 42 - a 150-year-old railway arch which will become a new pedestrian and cycle route through Nine Elms later this year.

The new connection between both sides of the railway line will help people get more quickly and directly from the new Northern Line extension to New Covent Garden Market, Nine Elms Lane and the River Thames.

Tunnel Visions, by Projects Office, won the competition organised by London Festival of Architecture, thanks to its deliverable and imaginative design which will also be robust for long term maintenance. The area's railway heritage is reflected in the 'daggerboards' used at Victorian railway stations. They can be sustainably constructed and will last for up to 20 years.

Almost 700 people logged on to an online exhibition in December 2020 to have their say on the six shortlisted design proposals before an expert panel selected the winning design.

Wandsworth Council's Cabinet Member for Community Services and Open Spaces, Councillor Steffi Sutters, said: "Projects Office have brought innovative thinking to this Victorian railway arch with a bright design that taps into our local transport heritage while connecting communities on both sides of the railway line.

"We were delighted that so many people sent in their views during the design competition that we ran with London Festival of Architecture. People who live and work in the area have welcomed the news that this new route is being created and I know that our local schools and residents are really looking forward to getting involved."

More pictures and video at [www.nineelmslondon.com/Arch42](http://www.nineelmslondon.com/Arch42)

## Stroll to work with Nine Elms jobs

More jobs are available this year in Nine Elms and Battersea as the area continues to develop and new Northern Line Extension stations are due to open in the autumn.

Wandsworth Council's Work Match jobs service has already got around 900 local people into work or apprenticeships at construction sites and in the commercial sector in Nine Elms including retail, healthcare, leisure, hospitality, facilities and estates management and transport.

Local resident Gabriel Bright got a job near home in the site canteen of the Northern Line Extension feeding

the construction and engineering workers building the new Tube line.

Gabriel said: "It is interesting to be part of the project because this place has a big history. The job is suitable because I am a father and the role is flexible enough for me to take care of my child, especially because I have a very short commute! Thank you to everyone who helped me get this job."



Visit [wandsworthworkmatch.org](http://wandsworthworkmatch.org)

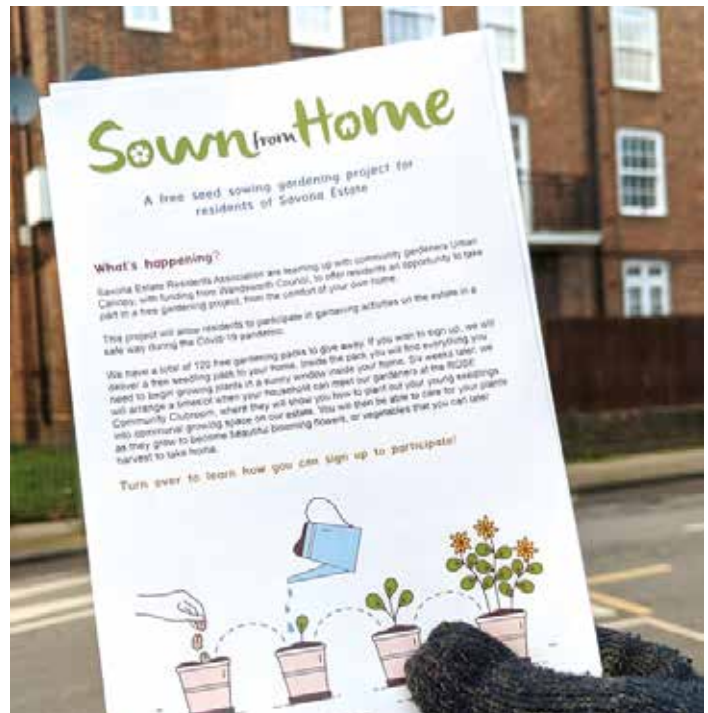
# Grants for communities

Community groups, charities and good causes across the borough shared funding worth nearly £100,000 in the latest round of projects supported by the Wandsworth Grant Fund (WGF).

This latest round of grants brings the total amount paid to local good causes this year by the WGF to just under £340,000. The fund has also been boosted this year by a series of special Covid-19 grants to local voluntary groups, churches and charities that carried out vital community support work during the pandemic, including delivering food parcels and medicines and befriending those living alone who have been forced into shielding.

Grants committee chairman Cllr Paul Ellis said: "We have made applying simple, swift and efficient so that we can get the funds out quickly to those good causes that need it most."

The next application deadline is April 12. Find out more and how to apply at [wandsworth.gov.uk/WGF](http://wandsworth.gov.uk/WGF)



Residents of the Savona Estate in Nine Elms have been awarded a grant from the Wandsworth Grant Fund for their 'Sown from Home' project.

They have been provided with materials and the knowledge to grow plants and vegetables at home, which will then be planted out this spring in public locations across the Savona Estate under the guidance of knowledgeable members of staff.

## Would you like to join the Board of Trustees at WCA?

Wandsworth Care Alliance (WCA) is a well-established and highly-regarded charity. It specialises in organising projects that enable people to express their views about local health and social care services and to influence the development of these services.

This involves working with diverse groups, including people who often find it difficult to make their voices heard in the public arena. In recent years, WCA has been awarded two major, continuing contracts: one for setting up and running Healthwatch Wandsworth (HWW), the other for establishing and leading the Voluntary Sector Coordination Service (VSCS). As the VSCS we deliver a range of services to support the local voluntary sector infrastructure and to promote more effective collaboration between the Borough's diverse third sector organisations, and to build a more productive partnership between them and the statutory organisations.

The WCA Board of Trustees are seeking to recruit new members to replace those whose terms of office will end during 2021. Previous Board or Trustee experience is not essential but we are also especially interested

to hear from candidates who are prepared to serve as Chair Designate, with a view to taking on a Chairing role in the near future. This is an excellent opportunity to engage with the work of a successful voluntary organisation that is committed to working with the community to achieve positive change.

More information about WCA is available at: [wandsworthcarealliance.org.uk](http://wandsworthcarealliance.org.uk)

We encourage those interested in applying for these positions to request further details by phoning 020 8516 7716 or by emailing [admin@wandcareall.org.uk](mailto:admin@wandcareall.org.uk).





# Wanted – loving families



Scott, Amy and their children

## THE PANDEMIC HAS AFFECTED US ALL AND CREATED CHALLENGES MOST OF US COULD NEVER HAVE IMAGINED 18 MONTHS AGO.

The impact has been particularly profound for some families and Wandsworth urgently needs safe, loving foster homes for children and young people.

In Wandsworth we believe that every child deserves the best start in life and should have a safe home. Some children need a foster home for a short while and others, forever. Our foster carers are important. We value them and will do our best to support them in caring for some of the most vulnerable in our society.

We particularly need homes for older teenagers who need to be supported through the last few years of education; we need foster carers who can look after more than one child so we can keep sibling groups together, and we need homes for unaccompanied asylum-seeking children and young people who will need tailored support.

Being a foster carer can be one of the most purposeful, rewarding, lifechanging things you could do, but it is mostly about providing a calm loving environment, caring routines and supporting them to achieve in life. It is a real opportunity to change the lives of others and give a child the very best start in life

## Scott and Amy's fostering story

"Amy and I started our fostering journey for real in September 2020 when we took our first placement, a young asylum seeker with no possessions to his name. Over the next month, we provided a stable and loving home for our new foster family member. We ate meals together, helped develop the life skills he would need in later life, supported his emotional needs and frequently enjoyed family football in the garden. My nine-year-old son's face, when he saw his new housemate had genuine football skills, was a picture!

"We are now three months into looking after our second young person, a teenage girl preparing to move onto independent adult life. As with our first placement, it's not all plain sailing. Every day seems to throw up new challenges which can seem more intense when you are dealing with them in your own home. Fortunately, we have always had the support we needed from Wandsworth social services. Regular calls with our supervisory social worker have made us feel like we are not in it alone, and a few times I have called on our experienced foster carer mentor for some urgent advice.

"Our early experiences have captured the essence of why, as a family, we chose to be foster carers in the first place - to support vulnerable young people who were in need of a stable, loving home. So far, the rewards have been immense, and have only had a positive effect on our family life. With Covid now putting so many families under enormous pressure, it feels more important than ever to do what we can to help each other out."

Every child is special, they deserve the best care in a secure and loving environment and to be treated with dignity. If you think you can make a positive impact on a child's life and are considering fostering, please:

**Visit:** [fostering.wandsworth.gov.uk](https://fostering.wandsworth.gov.uk)

**Call (020) 8871 6666**

**Email [fosteringrecruitment@wandsworth.gov.uk](mailto:fosteringrecruitment@wandsworth.gov.uk)**

# Exploring Wandsworth's past

This year's theme is Wandsworth's homes and housing.

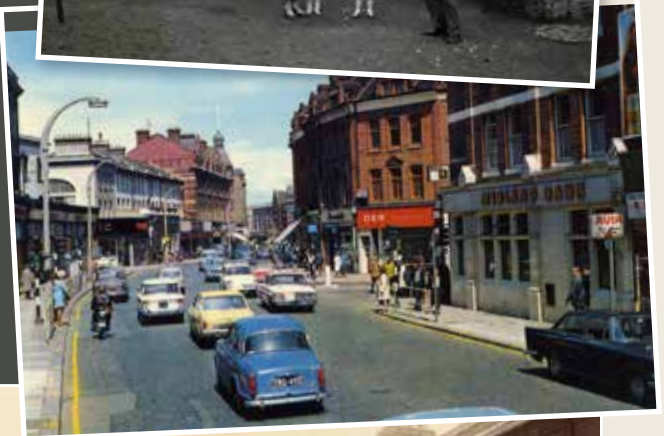
Some events may take place in person, others will be digital. There will be a wide variety of events including talks, poetry readings and walks.

The festival comes together each year thanks to the willingness of its contributors to share their enthusiasm, knowledge, and time. Follow **@Better\_WHS** on twitter for updates.

The theme will also be reflected in this year's Wandsworth Council/ GLL Heritage Award for Schools. Entries should be about Your Home, which could also include your local park or open space. You might want to look at who lived in your house or street before you or how the land your house or street on has changed.

There are five prizes of £100 Amazon vouchers up for grabs, and you can also win a trampoline or ice-skating session for you and your classmates. For more information (and for help tracking down source materials) contact **Heritage@gll.org**.

Clockwise from top right  
An area designated for slum clearance  
1960s Balham  
Chivalry Road  
The library home delivery service, 1967  
Northcote Road, 1986  
Stormont Road, 1968  
Huguenot Place, 1902  
Stewarts Lane, 1930





# Help us to keep your street clean

The vast majority of residents do the right thing with their rubbish and recycling, keeping the borough looking at its best.

Sadly, on bin day, a small minority of residents leave their rubbish or recycling sacks on the pavement which looks messy, get in the way and can cause litter.



Here's what you can do to help:

- Keep your rubbish in a dustbin to help prevent litter. Litter on the streets causes a health hazard. We cannot empty wheelie bins
- Have all rubbish and recycling ready for collection by 6:30am on the right day
- Leave your rubbish and recycling inside your front garden, by the entrance. Never put it on the pavement
- If your front door opens on to the street, you will have to put your rubbish and recycling on the pavement for collection. Leave it by your front door only, no earlier than 6:30pm on the day before collection is due
- Your rubbish and recycling will be collected on the same day each week (except over Christmas and New Year when changes will be advertised)
- Use the provided recycling sacks for the correct items only
- Never dump your rubbish on the street. Collection of rubbish too big or too heavy for an ordinary dustbin can be arranged. Contact us with a full list of items and we will tell you the cost

Contact: (020) 8871 8558 or visit: [wandsworth.gov.uk/waste](http://wandsworth.gov.uk/waste)



**Wandsworth's 'Outstanding' provider of quality care in your own home.**



**Rated 'Outstanding' by CQC**  
Our caregivers deliver high quality care services you can trust.

#### Our services include

- Dementia care
- Live in care
- Home help
- Companionship
- Personal care
- Overnight & 24 hour care
- Respite care





The Junction Cinema, Lavender Hill

# Wandsworth Past and Future – arts and culture

**LOCAL PEOPLE ARE INVITED TO COMMENT ON A NEW CULTURAL STRATEGY TO SUPPORT ARTS AND CULTURAL ORGANISATIONS THROUGH AND BEYOND THE PANDEMIC, AND TO PUT ART AND CULTURE AT THE HEART OF LOCAL COMMUNITIES.**

Wandsworth is blessed with a rich cultural scene and a look back at the cultural history of Wandsworth shows that it has always boasted plenty of theatres, cinemas and live music venues.

The Grand theatre in Clapham Junction opened on Nov 26, 1900 with a music hall bill including singers, acrobats, a banjo player and performing mules and ponies. Like many similar venues, the Grand went on to become a cinema and bingo hall. In the 1990s it narrowly avoided becoming a Wetherspoons and now hosts live music.

The Balham Varieties Music Hall, Balham High Road eventually became The Gaumont Cinema and was demolished in 1974, while the Royal Duchess Theatre on Balham Hill was badly damaged by wartime bombs and was eventually demolished to make way for the Balham Hill Estate.

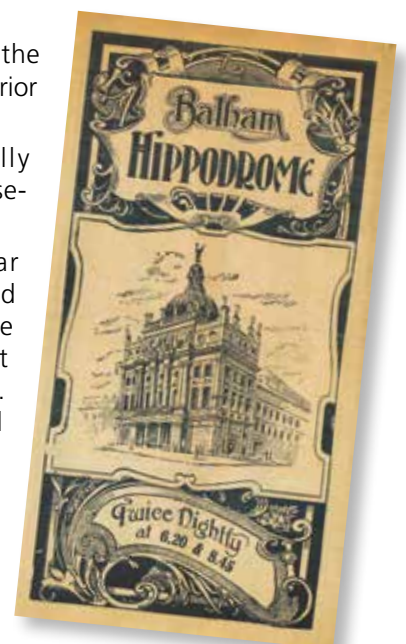
The Granada Theatre in Tooting was huge and lavish, seating nearly 4,000 people. In 1963 The Beatles

performed there and today it is the Gala Bingo Hall – the stunning interior protected by a grade 1 listing.

Many cinemas were originally theatres, but others were purpose-built, including four in Putney.

The Odeon and The ABC near Putney Bridge were demolished in 1972 to make way for the current cinema – one of the first multi-screen cinemas in Britain. In Wandsworth Town a council green plaque can be seen on the site of the old Biograph Cinema – London’s first licensed cinema.

Eventually Wandsworth Council took more of a leadership role in shaping the borough’s artistic and cultural scene, realising







The Shakespeare Theatre



Music hall stars Harry Tate, Tom Tweedy and Tom Tweedy Jnr

their importance in creating happy residents, vibrant town centres and strong communities – especially in rapidly developing communities such as Nine Elms.

The role of individual artists was recognised and artists' studios set up. Local theatres flourished, including the UK's first South Asian theatre company Tara Arts, which has made the borough its home for more than 40 years. Battersea Arts Centre leases the old Battersea Town Hall for a peppercorn rent from the council, which also commissions community projects and helped Battersea Arts Centre recover from a devastating fire in 2015.

The council organised the Wandsworth Arts Festival and other events, and art, music and performance was encouraged in schools. Over time the Wandsworth Arts Festival morphed into the Wandsworth Arts Fringe, inviting anyone with a creative project or idea to take part.

In 2019 the Wandsworth Council arts team was embedded into the council department responsible for developing the local economy and strengthening communities.

It works closely with the council's public health, economic development, housing and planning departments and the teams working on the regeneration of Nine Elms and the Alton and Winstanley and York Road Estates. It also works with the local artistic community and with schools to help young people discover their creativity and navigate pathways into employment in the creative sector.

During the pandemic it has been working to support the creative sector and provide outlets for artists' work, including an online arts fringe, art in town centres and the Wandsworth Arts website.



Putney's cinemas

**The public is being asked to comment on a proposed new ten-year Cultural Strategy.**  
**You can read the strategy and have your say at [haveyoursay.citizenspace.com/wandsworthecs/arts-21](https://haveyoursay.citizenspace.com/wandsworthecs/arts-21)**

# what's on?

Find out more at [wandsworthartsfringe.co.uk](http://wandsworthartsfringe.co.uk)

EVENTS FOR MARCH  
TO MAY 2021



## WANDSWORTH ARTS FRINGE

The popular festival returns from June 25-July 11, and will be a mixture of live and online events. WAF has announced which projects have received grants to take part in the festival. The WAF Grants are funded directly by Wandsworth Council, primarily through the Wandsworth Grant Fund, which sets £20,000 aside to support WAF activity each year, with a maximum award of £2,000 per project.

**My Battersea** - A photography competition and exhibition run by the Battersea Society in partnership with the Royal College of Art.

**Sunday morning** - A recorded digital theatre performance from Anna Skalova combining acting and live animation.

**Trees at the Woodfield** - An arts and physical activity weekend from The Woodfield Pavilion.

**Finding Strength in Small Things** - A series of photography and art workshops with artists from Sound Minds .

**Homeless Project** - A film about a homeless actor, set in Wandsworth, created by Weave Stories.

**People's Show 141: SHOP** in the Putney Exchange Shopping Centre with a group of 25 students from the University of Roehampton.

**(Re)focus: Exploring Unheard Voices A** documentary exploring how Covid-19 has impacted people with learning disabilities from the Baked Bean Theatre Company.

**Dance Digital Take Over** – a blend of online and live digital dance film screenings, events, dance workshops, interactive virtual reality installations, and Virtual Reality dance shows from CoDa Dance.

**The Adventures of S.U.S.A.N.N. the Robot** - A live art experience from Cat and Mouse Theatre.

**The Great Pebble Dash** - An outdoor game for all ages from KP Projects.

**John Archer** - An interactive event from Black Heroes Foundation celebrating Battersea's first Black Mayor, John Richard Archer.

**Congrego** - A celebration of Latin American music and dance from the World Heart Beat Music Academy.

**Citizens of the Climate** - A collection of stories about climate change from WHABB Studios.

**YES music performance** - A multi-disciplinary and multi-generational creative arts show with Providence House.

**Big Sculpture Get Together**, presented by Wild City. Create big towers, tunnels and boulders then roll, topple and scramble through at this unique live event.

**Calvin's Destiny** - presented by Simmy King, this British urban short film series tells the story of love, courage and the desire to be accepted.

**Every Soul** is a series of low-cost workshops with Ballet Soul Artistic Director Ben Love.



## Move More Wandsworth

Move More Wandsworth is a service designed to help people living with and beyond cancer become more physically active, at a level that is right for them. The service is suitable for people at any stage of cancer – whether still in treatment or on the road to recovery.

Although originally offered face-to-face, Macmillan Move More Wandsworth has continued to operate virtually throughout 2020 and into 2021, by phone or video call. The team hopes to return to face-to-face sessions as soon as it becomes safe to do so.

Macmillan Move More Wandsworth is delivered by Enable Leisure and Culture, in partnership with Macmillan Cancer Support and NHS South West London CCG. The service has helped more than 300 people since its launch in 2016 and has recently secured funding to continue supporting people with cancer until at least March 2022.

If you or anyone you know would benefit from the service, contact Marguerite Larvin, Macmillan Move More Advisor for Wandsworth on **0203 959 0039** or email [swlccg.movemorewandsworth@nhs.net](mailto:swlccg.movemorewandsworth@nhs.net).

## 'For the Struggle' Concert Tuesday 30th March, 7pm

World Heart Beat is proud to present its virtual live-streamed 'For the Struggle' concert, featuring a combination of live and pre-recorded performances from World Heart Beat musicians. The concert will showcase a mix of influential protest music produced during the American Civil Rights Movement to challenge racial injustice and discrimination, through to modern-day classics showcasing the struggle of black people over the last 400 years.

**Ticket price: £2 per person**  
visit [ticketsource.co.uk/whb](https://ticketsource.co.uk/whb)

## Children's songs and stories

Wandsworth Libraries present daily online songs, stories and craft sessions for children, plus baby rhyme time sessions.

**Search for Wandsworth Libraries on Facebook**

## Bags of Taste

If you want to eat better food on a tight budget, join this free virtual cooking course and learn to cook delicious, healthy £1 a portion meals. Qualifying participants will get a free bag of ingredients and you will be guided on how to cook them. Call **07491 646 418**.

## Support for carers

Sessions from the Wandsworth Carers Centre including stress management, relaxations, yoga and bingo plus find out about respite help.

[carerswandsworth.org.uk](https://carerswandsworth.org.uk)

## Words of Wandsworth

Local writers, poets and artists are invited to submit creative pieces for a new anthology celebrating the people and places of the borough, created in partnership with Wandsworth Libraries & Heritage Service.

We're looking for short stories, poetry, photography, illustration and other forms of visual art suitable for print. Your piece simply needs to contain some mention of Wandsworth, but the rest is entirely up to you. We encourage everyone to submit whether they are a lifelong writer or artist, or are just beginning your creative journey.

Submissions are limited to one per person, you must be a Wandsworth resident and short stories should be 3000 words max, poems 20 lines max. Email your submission to [wordsofwandsworth@gmail.com](mailto:wordsofwandsworth@gmail.com) by May 1 2021.

## Disability Sports and Physical Activity

Sessions offered online by Enable Leisure and Culture include DancAbility, Sprit of Cricket and Multisports. There is also a weekly At Home Challenge for the whole family. Find out how to book and get links to the At Home Challenges at [enablelc.org/disability-sport](https://enablelc.org/disability-sport) or contact Kaity Hall on [khall@enablelc.org](mailto:khall@enablelc.org)

## Unlocking Furzedown

This ten minute film is a celebration of Furzedown bringing together of thoughts, ideas, music and images from Spring 2020. It was created from photos, videos, sound clips, poetry and music submitted by local people. Watch online at [vimeo.com/495254816](https://vimeo.com/495254816)

## Classes at the Royal Academy of Dance

\*Online Silver Swan online classes for the over 55s are held on Fridays. Wandsworth residents are eligible for a discounted rate of £8 per class

[royalacademyofdance.org/rad-at-home/silver-swans-classes-online/](https://royalacademyofdance.org/rad-at-home/silver-swans-classes-online/)

\*Dance with RADiate

Subsidised dance classes to children on the autism spectrum, including children with moderate to severe and complex learning difficulties, and those who are non-verbal. RADiate sessions develop children's personal strengths, boost their self-esteem, and encourage relaxation and fun. Classes are delivered by a small team of highly-experienced teachers at primary schools in London. The Royal Academy of Dance also offers a RADiate class at its headquarters in Battersea on Wednesday afternoons.

[www.royalacademyofdance.org](https://www.royalacademyofdance.org)



## History walks

### March 25 Marc Bolan's Teenage Dream

Zoom session open 6:45pm for 7pm start

Mark Feld came to Summerstown in the early sixties. Find out more about journey from busking outside the Prince of Wales pub to the world's biggest pop star!

### April 14 Tooting Magical Musical History Tour

Zoom session open 6:45pm for 7pm start

Marc Bolan, The Beatles, Sadie Crawford, M.I.A., Mud, Bob Marley, Girlschool, Harry Lauder, Mad Professor, Sandie Thom, The Strawbs...

the walk covers key locations associated with this area's rich musical heritage, soon to be celebrated with plaques at the TMC recording studio in Mitcham Lane and Marc Bolan in Summerstown.

### Saluting Streatham Cemetery guided walk May 8 starts 2pm from cemetery entrance, Garratt Lane, Tooting

A gentle guide through this magnificent cemetery, pointing out some of its notable residents and their stories, outstanding nature and the good works and future plans of the Friends of Streatham Cemetery. Find out how to join at [summerstown182.wordpress.com](https://summerstown182.wordpress.com). All walk dates are subject to change, cancellation or restriction on numbers so check the website or follow @summerstown182 on twitter for updates.





### Guys get active

Guys Get Active is designed specifically to support men who want to lose weight and get active. The programme offers weekly exercise sessions led by a qualified level 3 exercise instructor, nutritional advice from a qualified nutritionist and regular 1:1 phone call support to help you achieve your health and fitness goals. To be part of this programme you need to be male, 18+, live, work or be registered with a GP in the Wandsworth borough and have a BMI of 27 or more, or a diagnosis of Type Two Diabetes. [enablelc.org/guysgetactive](http://enablelc.org/guysgetactive) email [activelifestyles@enablelc.org](mailto:activelifestyles@enablelc.org) call 020 3959 0039.

### Free family yoga and bootcamp sessions

Online sessions for residents of the Doddington & Rollo Estate as part of The Foundation.

- Bootcamp Wednesdays 9:30 – 10:15
- Yoga Thursdays 10:30 – 11:30

The programme is growing this year to involve more residents and deliver more activities. Keep up to date on Instagram or Facebook [@thefoundationlb](https://www.instagram.com/thefoundationlb).



## A CHANCE TO TALK

All chit chat and tall tales welcome!

### WANDSWORTH LIBRARIES

If you, or anyone you know, are feeling isolated or alone and would enjoy a good chat to boost your well-being, Wandsworth Libraries are launching a new scheme to help. One of our trained team will ring you at a prearranged time and will be able to chat with you about a topic of your choosing. We're quite good on books, but also happy to talk about current affairs, sport, gardening or anything else that you're interested in! To find out more about the programme please email [Patrick.malone@gll.org](mailto:Patrick.malone@gll.org) call Southfields Library on 020 8780 1945 or ask at your local Wandsworth library.



### Friends of Wandsworth Common 150th anniversary

The Friends of Wandsworth Common are planning a number of projects and events to mark this year's 150th Anniversary of the signing of the Wandsworth Common Act in 1871, which saved the Common as you see it today for future generations. Fundraising to plant at least 150 trees across the Common started in November and planting is now almost complete, to include a new 'mini-forest' to encourage biodiversity. In May The Wandsworth Common Story will be published celebrating some of the places, events and people that make the Common's last 150 years so fascinating, including a famous female racing driver, the Wright Brothers and Beatrix Potter. Several heritage walks on the Common are planned alongside nature focussed 'walks and talks' and in July, government guidance permitting, the Friends hope to have a big celebration on the Common. To find out more and how you can get involved, visit [wandsworthcommon.org](http://wandsworthcommon.org) or e-mail [info@wandsworthcommon.org](mailto:info@wandsworthcommon.org).



### My Battersea Photography Award

The Battersea Society, in partnership with the Royal College of Art, is launching the My Battersea Photography Award and Exhibition to celebrate and explore what Battersea means to those who live and work here as well as promoting a sense of pride in the area. The competition will run from mid-March through to the end of May and winning and shortlisted entries will be included in an exhibition as part of the Wandsworth Arts Festival in July. [www.batterseasociety.org.uk](http://www.batterseasociety.org.uk)

### Community meetings in Nine Elms

Everyone living in Nine Elms is welcome to join quarterly engagement meetings to hear about the latest opportunities and developments in the local area and ask questions. The next online meeting is Wed 24 March at 5.30pm. Find out how to join in at [nineelmslondon.com/CEAG](http://nineelmslondon.com/CEAG)

### Business support

To help guide Wandsworth businesses through some of the challenges presented by COVID-19, the council is funding a series of bespoke support programmes.

#### Re:Create 2021 March - June 2021

A free business support programme for artists, makers and creative businesses. [wandsworthenterprisehub.com/recreate](http://wandsworthenterprisehub.com/recreate)

#### 1-1 PR Business Advice Surgery March 25, 9:30am – 4:30pm

Pick the brain of a business expert and raise the profile of your business.

#### Wandsworth Digital March 29 - April 2

A free programme designed to help small businesses in Wandsworth to start selling online.

#### Ready, Steady, Grow April 2021

A free programme to support entrepreneurs wanting to kick start their business idea or scale up their existing start up. For more information on the above programmes and additional business support including: Brexit advice, 1-1 monthly advice sessions, webinars and information on funding, visit [wandsworthenterprisehub.com](http://wandsworthenterprisehub.com)

### Putney School of Art and Design Online Classes

The PSAD's popular art classes are now online and students of all levels are welcome. You can also see an online exhibition of student's work during lockdown. [enablelc.org/psad/specialist-holiday-courses](http://enablelc.org/psad/specialist-holiday-courses)

### How to be listed

Send details (including access for people with disabilities) to: [whatson@wandsworth.gov.uk](mailto:whatson@wandsworth.gov.uk) We cannot guarantee that your entry will be inserted. This is a free service. The information in this guide has been provided by the advertisers themselves. Wandsworth Council accept no responsibility for the accuracy of the information or for any event not organised by the council.



# Doing it online

Using our website helps keep your council tax bills low

## Report a waste problem

[wandsworth.gov.uk/waste](http://wandsworth.gov.uk/waste)

## Request a housing repair

[wandsworth.gov.uk/housingonline](http://wandsworth.gov.uk/housingonline)

## Search planning applications

[wandsworth.gov.uk/planningregister](http://wandsworth.gov.uk/planningregister)

## Report a street problem

[wandsworth.gov.uk/streets](http://wandsworth.gov.uk/streets)

## Apply for a school place

[eadmissions.org.uk](http://eadmissions.org.uk)

## Book an MOT

[wandsworth.gov.uk/MOT](http://wandsworth.gov.uk/MOT)

## Report noise and nuisances

[wandsworth.gov.uk/noise](http://wandsworth.gov.uk/noise)

## Apply or renew a parking permit

[wandsworth.gov.uk/parkingpermits](http://wandsworth.gov.uk/parkingpermits)

## Report graffiti for removal

[wandsworth.gov.uk/graffiti](http://wandsworth.gov.uk/graffiti)

## Report an abandoned vehicle

[wandsworth.gov.uk/abandonedvehicles](http://wandsworth.gov.uk/abandonedvehicles)

## Tell us if you are moving in or out of Wandsworth

[wandsworth.gov.uk/MIMO](http://wandsworth.gov.uk/MIMO)

## Enquire about your housing options

[wandsworth.gov.uk/housingoptions](http://wandsworth.gov.uk/housingoptions)

# Pay it online

It's now easier to pay online at [wandsworth.gov.uk/payments](http://wandsworth.gov.uk/payments)

## Pay your council tax

[wandsworth.gov.uk/paycounciltax](http://wandsworth.gov.uk/paycounciltax)

## Pay a parking fine

[wandsworth.gov.uk/parking/payment](http://wandsworth.gov.uk/parking/payment)

## Pay your rent

[wandsworth.gov.uk/rents](http://wandsworth.gov.uk/rents)

## Pay for a marriage or civil partnership

## ceremony

[wandsworth.gov.uk/ceremonypayment](http://wandsworth.gov.uk/ceremonypayment)

## Pay your business rates

[wandsworth.gov.uk/paybusinessrates](http://wandsworth.gov.uk/paybusinessrates)

## Pay a waste or littering penalty

[wandsworth.gov.uk/waste-enforcement](http://wandsworth.gov.uk/waste-enforcement)

# Talk to us online

## weekly e-newsletter

[wandsworth.gov.uk/enews](http://wandsworth.gov.uk/enews)



[facebook.com/wandsworth.council](https://facebook.com/wandsworth.council)



[twitter.com/wandbc](https://twitter.com/wandbc)



[instagram.com/wandsworth\\_council](https://instagram.com/wandsworth_council)

# My Account

Create an account and you will only have to sign in once to access the main council services.

[wandsworth.gov.uk/myaccount](http://wandsworth.gov.uk/myaccount)

# Report It app



**Wandsworth Report It** makes it easier for anyone to report problems like flytipping, graffiti and other environmental issues. Search for the Wandsworth Report It app on the Apple, Android or Windows app store.

# Other contacts at the council

## Adult Social Services

(020) 8871 7707

## Births, Deaths, Marriages and Voting Hotline

(020) 8871 6120

## Early Years and Childcare Hotline including Family Information Service and After School and Holiday Play

Centre bookings

(020) 8871 7899

## Environmental Services

including noise, pest control, private housing and licensing  
(020) 8871 6127

**Finance Hotline including benefits, council tax, rents and business rates**  
(020) 8871 8081

**Housing Hotline including housing management and repairs, service charges, home**

## ownership, homelessness and housing advice

(020) 8871 6161

**Parking and Streets Hotline including concessionary travel, blue badges, MOTs, highways and skip licensing and bay suspensions**

(020) 8871 8871

## Planning and Building Control

hotline including Community Infrastructure Levy (CIL), land searches and street naming and numbering  
(020) 8871 7620

**Schools and Admissions**  
(020) 8871 7316

**Waste Hotline including rubbish, recycling and litter**  
(020) 8871 8558

# BOOK AHEAD

**From Monday 22nd March 2021**

You must book a slot to visit the Smugglers Way Household Waste and Recycling Centre 'the tip'.

Bookings can be made from **15th March**

The Booking System is being introduced to make the service more efficient and to help reduce queues at peak times.

To find out more  
visit [www.wrwa.gov.uk](http://www.wrwa.gov.uk)

During your visit - Please observe social distancing guidelines.

