

# Lot 1a SHUTTLEWORTH ROAD

## PROJECT NEWSLETTER

December 2020

ISSUE NUMBER 13

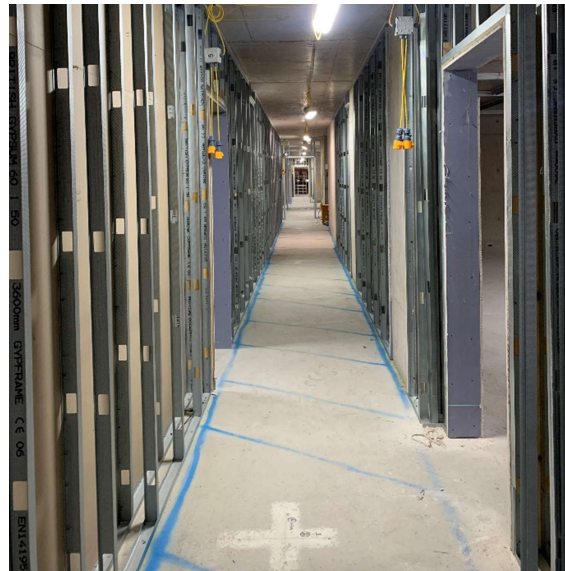
Wates Residential is proud to say that despite the ongoing pandemic we have managed to maintain progress on the delivery of this much needed affordable housing by implementing a number of new measures in line with the latest Government and PHE guidance regarding Covid-19.

### Christmas Site Hours

We will be closing the site at lunch time on Christmas Eve, Thursday 24<sup>th</sup> and reopening on Monday 4<sup>th</sup> January.

### Our progress to date

- The Network Rail retaining wall has been completed and the final boundary fencing is being installed.
- The Roof slab is being cast on level 7, and the concrete frame contractor will be completing their works before Christmas.
- Windows installed up to level 2.
- Internal walls being installed to form the apartments on level 1 and level 2.
- Brickwork has started and is being built from ground floor up to level 1.



*Internal Corridor Level 2*

### Our upcoming works

- Complete scaffolding to wrap the whole building.
- Continue with window installation to level 3 and then internal walls.
- Install materials hoist.
- Continue building brickwork from level 1 to level 2.
- UKPN connection of substation.

### How you can reach us

**Contact details:**

Tom Hooper-Smith  
(Project Manager)  
07719 082 033

**Emergency contact details:**

Stuart Hamilton  
07547 572 365

### Our working hours

**Monday to Friday:**

**08:00 to 18:00**

**Saturday:**

**08:00 to 13:00**

