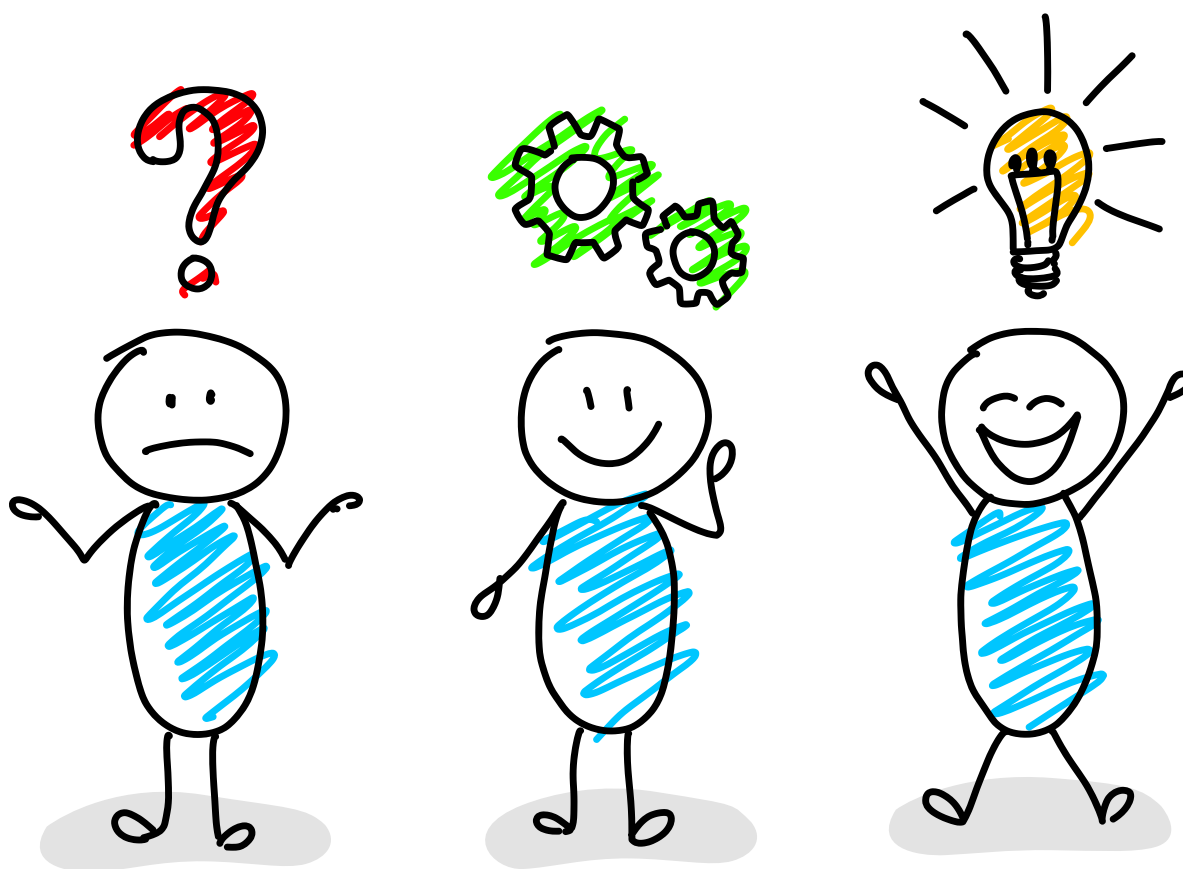




## Wandsworth's Puzzle, Quiz and local information Booklet.



Which London street was the first to be lit by electricity ?  
(Ans. on back page)



A woman with long brown hair, wearing a red top, is sitting at an outdoor cafe table. On the table is a potted plant with yellow flowers and a glass jar filled with white and brown treats. In the background, other people are seated at tables under a canopy of trees.

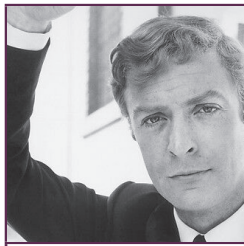
# London quiz questions

1. What is hidden underneath Cleopatra's Needle?
2. What narcotic used to be sold at Harrods until the early 20th century?
3. Pentonville and Holloway prisons are located in which London borough?
4. The City of London building 20 Fenchurch Street is better known by which nickname?
5. Which London rail station is named after a former priory?
6. Which City of London church inspired the tiered wedding cake design?
7. Name the architect who designed both the Battersea Power Station and the Tate Modern's building.
8. What decade did the last execution at the Tower of London take place in? A) 1960s B) 1910s or C) 1940s?
9. Which London tube station is closest to Little Venice?
10. How many people died in the Great Fire of London? A) Six B) 112 or C) 25?
11. Boudica, who led a revolt on Roman London in AD60 or 61, was the Queen of which Celtic tribe?
12. In which London neighbourhood can you find 'Little Portugal'?
13. Before establishing The Globe on Bankside, William Shakespeare used to tread the boards in which East End district?
14. The lions at the bottom of Nelson's Column are identical – true or false?
15. Which London park is home to a pet cemetery?
16. Which mythical figure represents the City of London?
17. In which London neighbourhood can you find Charles Dickens' former home and now museum?
18. In what U.S. state can you find the old London Bridge, which was sold by the City of London in the 1960s?
19. What the original use of the building which now houses the Imperial War Museum?
20. EastEnders' fictional neighbourhood Walford shares the same E20 postcode as which east London area?

# Film star picture quiz



1.



2.



3.



4.



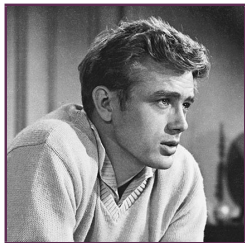
5.



6.



7.



8.



9.



10.



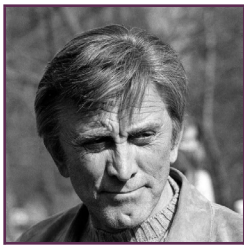
11.



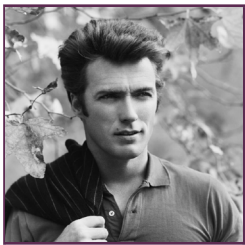
12.



13.



14.



15.



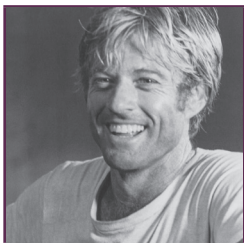
16.



17.



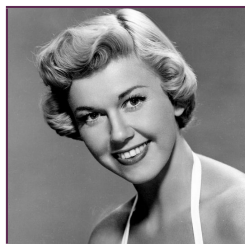
18.



19.



20.



21.



22.



23.



24.



25.

# Anagrams & codebreaker puzzle

Clue. They can all been seen on page 13

Marshy Otter	Whoa Jenny	Two Lot Candies	Try Eel Perms
1.	2.	3.	4.
Pointy I Desire	Afar Stark Inn	Mr Loony Airmen	Dory Said
5.	6.	7.	8.
Dalmation Run	Made Jeans	Debt Ford Error	Germany
9.	10.	11.	12.
Held Spicy Herb	Matinee Varies	Inhaler Oops	On Deaf Jan
13.	14.	15.	16.

## Code breaker

Each number on the grid equates to a letter, complete the puzzle by breaking the code.

	9		9		9		23		8		4		6	
18	11	24	11	5	16		26	1	5	4	25	26	12	5
	22		21		19		21		10		11		11	
10	26	21	2	25	11	6	8		17	25	12	6	7	8
	12		5		21		25		10				14	
21	11	12	16	13	2	5	21		5	23	20	16	19	13
	13		20				12		6		26			
25	21	7	13	25	12	8		26	6	7	16	11	20	5
			15		16		6				20		13	
26	24	26	10	5	26		25	21	10	5	26	16	21	12
	5				18		20		11		16		8	
6	17	13	21	2	5		3	5	12	12	11	6	13	21
	8		13		6		5		26		26		23	
8	19	17	21	13	12	11	7		21	25	21	7	11	13
	16		5		19		12		19		6		5	

Notes:

---



---



---



---



---



---



---



---



---



---

ABCDEFGHIJKLM  
NOPQRSTUVWXYZ

1	2	3	4	5	6	7	8	9	10	11	12	13
14	15	16	17	18	19	20	21	22	23	24	25	26

# Beatles wordsearch & number pathway

**68** Go from start to finish adding up the numbers on your pathway to a total of **68**

12	3	8	1	7	9	1
32	8	7	1	3	2	1
14	4	17	4	7	2	4
5	8	2	5	9	5	7
9	3	1	4	2	1	3

2	3	1	2	3	9	1
13	21	19	1	5	8	9
7	15	13	8	8	11	24
4	8	7	8	7	3	13
2	9	6	9	2	2	1

P	A	P	E	R	B	A	C	K	W	R	I	T	E	R	K	E	X	A
S	Q	Y	I	D	G	O	D	F	M	F	V	O	I	7	R	J	M	N
E	E	M	Q	R	N	K	N	Q	Q	I	O	R	E	T	Y	M	N	N
D	N	I	E	Y	I	U	I	F	E	E	L	F	I	N	E	S	G	O
I	Y	I	O	S	H	O	A	B	Z	O	W	T	H	C	Z	A	M	D
R	Y	I	R	G	T	E	Y	E	S	T	E	R	D	A	Y	E	H	A
O	B	B	H	A	E	R	X	Y	H	L	I	L	L	D	P	N	E	M
T	G	X	E	V	M	A	E	P	L	N	P	Z	C	A	R	A	L	Y
T	I	I	Y	L	O	B	F	H	M	S	I	L	V	Y	J	L	L	D
E	R	N	J	U	S	L	U	Y	T	H	H	S	A	T	F	Y	O	A
K	R	T	U	J	E	Q	L	S	S	E	Z	Z	U	R	E	N	G	L
C	O	Z	D	F	U	I	E	I	W	L	G	H	H	I	Y	N	O	F
I	N	Q	E	Q	F	R	D	H	D	O	V	O	W	P	K	E	O	C
T	A	R	V	E	Q	W	S	F	C	V	L	A	T	P	X	P	D	W
G	E	T	B	A	C	K	P	K	A	E	N	L	C	E	T	S	B	D
Y	L	W	P	M	E	P	Z	S	J	S	Q	Y	E	R	M	D	Y	A
D	E	M	S	Q	W	J	U	R	A	Y	X	U	A	Y	B	O	E	M
V	F	H	P	R	R	G	N	I	V	O	L	Y	M	L	L	A	C	C
E	V	O	L	S	I	D	E	E	N	U	O	Y	L	L	A	G	H	L

- |                      |               |                  |                  |
|----------------------|---------------|------------------|------------------|
| ALL MY LOVING        | GET BACK      | LADY MADONNA     | SHE LOVES YOU    |
| ALL YOU NEED IS LOVE | HELLO GOODBYE | LET IT BE        | SOMETHING        |
| COME TOGETHER        | HEY JUDE      | LOVE ME DO       | TICKET TO RIDE   |
| DAY TRIPPER          | I FEEL FINE   | PAPERBACK WRITER | YELLOW SUBMARINE |
| ELEANOR RIGBY        | IN MY LIFE    | PENNY LANE       | YESTERDAY        |




# Riddles

I speak without a mouth  
and hear without ears.  
I have no body, but come  
alive with wind.

What am I ?

What word in the English  
language does all of the  
following: the first two  
letters signify a male, the  
third three letters signify  
a female, the first four  
letters signify something  
great and the six letters  
something terrible. The  
whole word signifies a  
great woman.

What is the word?

A girl has as many brothers  
as sisters, but each  
brother has only half as  
many brothers as sisters.  
How many brothers and  
sisters are there in the  
family?

A woman shoots her  
husband, then holds him  
underwater for 5 minutes  
before hanging him. Then  
they enjoy a lovely dinner.

What is her job?

How can you physically  
stand behind your father  
while he is standing  
behind you?

You measure my life in  
hours and I serve you by  
expiring. I'm quick when  
I'm thin and slow when  
I'm fat. The wind is my  
enemy.

What am I?

Which word in the English  
Dictionary is always spelt  
Incorrectly?

What are the next three  
letters in this  
sequence?

OTTFSS?

Which word is unique in  
having three consecutive  
double letters?

What disappears as soon  
as you say its name?

I have cities but no hous-  
es, I have mountains but  
no trees, I have water but  
no fish.

What am I?

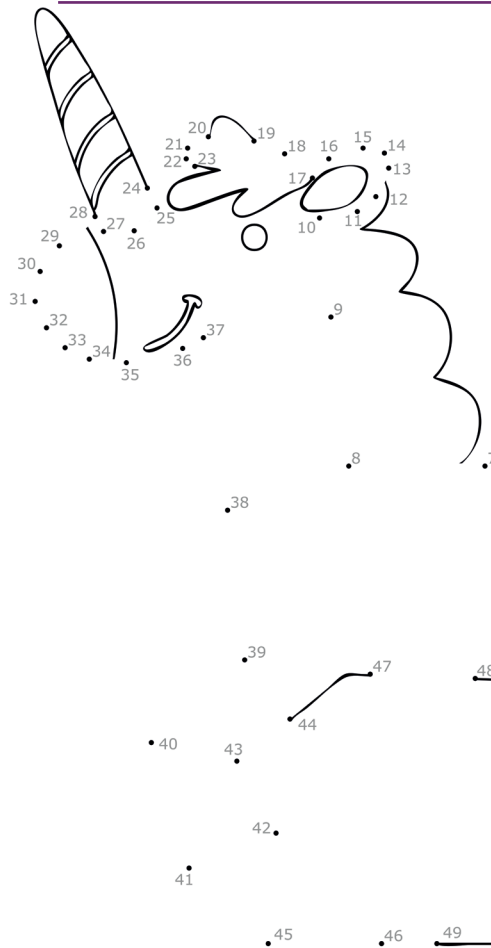
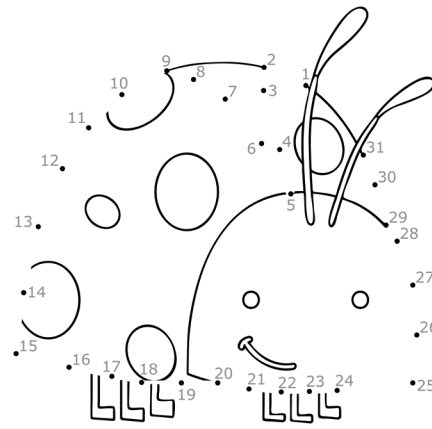
How is 7 different from  
the rest of numbers from  
1-10?



# Dot to dot puzzles



ladybird












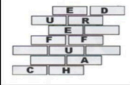


unicorn



# Some **terrible** jokes, some **dingbats** & a memory **game**

## DINGBATS

 01	 02	 03	 04
 05	 06	 07	 08
 09	 10	 11	 12

## SOME BAD JOKES

- What's blue and smells like red paint?  
Blue paint
- Why do you never see elephants hiding in trees?  
Because they are so good at it
- What's invisible and smells like bananas?  
Monkey Burps
- What's orange and sounds like a parrot?  
A carrot
- What colour socks do bears wear?  
They don't wear socks, because they have bear feet

## SOME EVEN WORSE JOKES

- What do you call a man with a seagull on his head? - Cliff
- What do you call a man with a number plate on his head? - Reg
- What do you call a man with a shovel on his head? - Doug
- What do you call a woman sitting on a slice of bread? - Marge
- Why do bees hum? - Because they don't know the words
- What shivers and shakes at the bottom of the ocean? - A nervous wreck
- What do you call a bossy potato? - A dic-tater
- What did the pirate say on his 80th Birthday? - Aye Matey

## MEMORY GAME

Spend 1 minute learning these items, then turn to page 14 and list as many as possible in 60 seconds.



## SOME TRULY TERRIBLE JOKES

- My Neighbour knocked on my door at 2.30 a.m this morning, can you believe that 2.30a.m !!  
Lucky for him I was still up playing my bagpipes.
- A cheese sandwich walks into the pub and orders a pint of lager. 'Sorry mate' says the barman 'we don't serve food in here'
- What do you call a canine magician? A Labracadabrador
- I got a rescue dog that used to belong to a Blacksmith, as soon as I got him home he made a bolt for the door.
- Being in Lockdown I ordered some food from Germany over the internet, the Sauerkraut has arrived but the Wurst is yet to come.
- A farmer stood in his field and counted 197 cows. When he rounded them up he had 200
- A man goes to the doctor because he thinks he's going deaf. "What are the symptoms?" the doctor asks him. "They're that yellow family that live in Springfield"

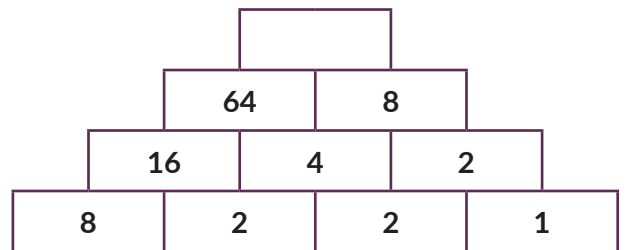
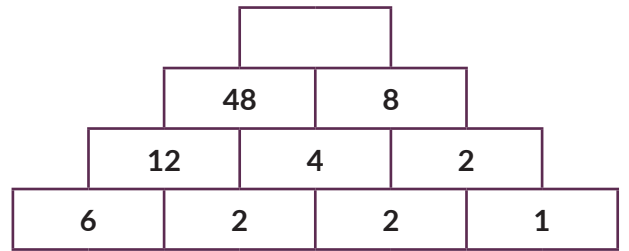
# Sudoku & maze fun

Fill in the puzzle so that each row across, each column down and each 3 x 3 box contains the numbers 1-9

6	5	9		1		2	8	
1				5			3	
2			8				1	
			1	3	5		7	
8			9					2
		3		7	8	6	4	
3		2			9			4
					1	8		
		8	7	6				

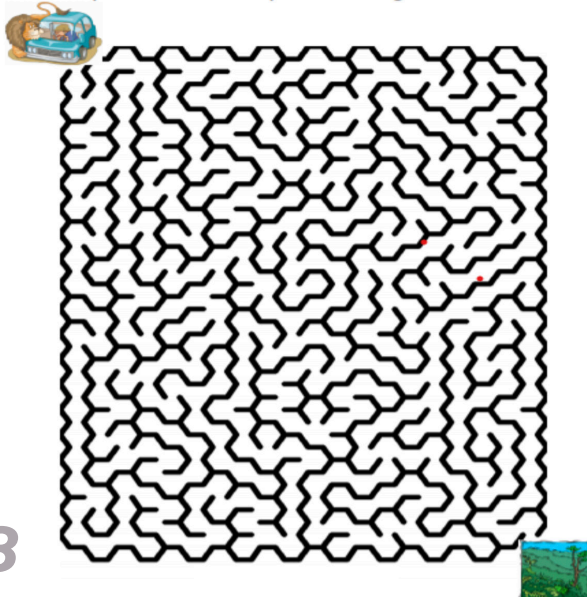
## NUMBER PYRAMID

What number fills the top box of the pyramid?

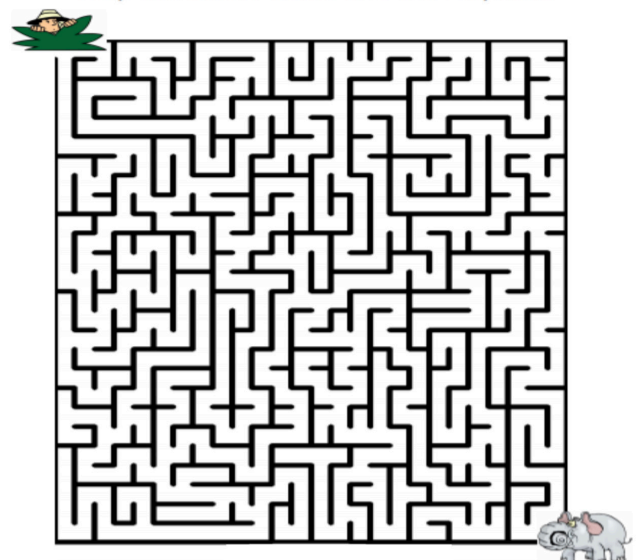


< Each Row follows a different pattern - fill in the next step. > The numbers in each square follow a pattern. Try to figure out which number comes in the middle. For the first square analyse the square and the diamond >

Help the man escape the dangerous Lion



Help the Safari Guide find the Elephant



# Home Instead word search

Find the words hidden within the grid.

P	A	G	N	I	K	O	O	C	I	I	G	P	S
M	A	H	M	L	C	H	O	I	C	E	N	O	N
P	N	O	H	F	A	M	I	L	Y	N	I	V	E
G	C	M	A	Q	U	A	L	I	T	Y	R	G	V
N	N	E	R	E	L	I	A	B	L	E	A	T	I
I	H	I	P	U	N	C	T	U	A	L	C	D	T
N	E	N	G	E	G	N	I	P	P	O	H	S	C
A	A	S	I	N	S	P	I	R	I	N	G	R	E
E	L	T	D	E	V	L	O	V	N	I	N	I	T
L	T	E	K	I	C	H	E	L	P	I	N	G	O
C	H	A	L	T	D	E	N	I	A	R	T	M	R
D	D	D	P	N	O	I	N	A	P	M	O	C	P
A	P	P	O	I	N	T	M	E	N	T	S	E	R
T	G	N	I	E	B	L	L	E	W	T	F	T	N

- INVOLVED
- WELLBEING
- CHOICE
- HOMEINSTEAD
- TRAINED
- CARING
- HELPING
- COOKING
- APPOINTMENTS
- PROTECTIVE
- CLEANING
- SHOPPING
- HEALTH
- RELIABLE
- COMPANION
- INSPIRING
- PUNCTUAL
- QUALITY
- FAMILY

## Daily quick crossword

1		2		3			4	5		6		7
8							9					
10								11				
		12		13						14		
15												16
17		18					19		20			
21									22			
23								24				

### Across

- 1 Loose from moorings (6)
- 4 Academy awards (6)
- 8 Brownish tint used in photography (5)
- 9 Frankness (7)
- 10 Oriental (7)
- 11 Choose to participate (3,2)
- 12 Morning snack (9)
- 17 Supermarket section (5)
- 19 Welsh port (7)
- 21 Exceed (7)
- 22 Intense sorrow (5)
- 23 Diatribe (6)
- 24 Story in instalments (6)

### Down

- 1 Solution (6)
- 2 Quick sharp reply (7)
- 3 Distress signal (5)
- 5 Wavy, winding (7)
- 6 Approximately (5)
- 7 Pilgrim's destination (6)
- 9 General agreement (9)
- 13 Green gem (7)
- 14 Japanese dish of thinly sliced raw fish (7)
- 15 Short-legged hound (6)
- 16 Legal (6)
- 18 More certain (5)
- 20 Bicker (5)

# Answers & solutions

## Page 1 London quiz questions

- A1) A time capsule was buried when the Needle was erected by the Thames in 1878. It includes children's toys, a razor, copies of the bible, a Bradshaw Railway Guide, and 12 portraits of 'pretty ladies' of the day.
- A2) Cocaine - along with morphine - was available for sale in Harrods in the 1910s.
- A3) Islington.
- A4) The Walkie Talkie.
- A5) Blackfriars.
- A6) St Bride's Fleet Street. A baker living on Ludgate Hill found inspiration from the tiered steeple while designing a cake for his own wedding day.
- A7) Giles Gilbert Scott.
- A8) 1940s. German spy Josef Jakobs was shot by firing squad at the Tower in August 1941.
- A9) Warwick Avenue.
- A10) Six.
- A11) Icen.
- A12) Stockwell is home to a large Portuguese community, with many Portuguese businesses located in the area.
- A13) Shoreditch. Shakespeare performed at both The Theatre and The Curtain Theatre.
- A14) False, the four lions are slightly different.
- A15) Hyde Park.
- A16) Dragons.
- A17) Bloomsbury.
- A18) Arizona. Robert P McCulloch spent just over £1million on the Georgian bridge.
- A19) Psychiatric hospital. Bethlem/Bedlam moved from Moorfields in 1815.
- A20) Stratford.

## Page 3, 13 Film Star

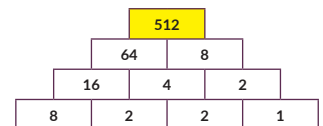
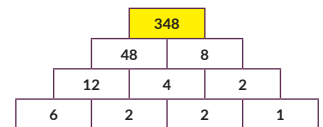
### Picture quiz Anagrams

- 1. Jane Seymour
- 2. Michael Caine 18
- 3. Debbie Reynolds
- 4. Terry Thomas 1
- 5. Meryl Streep 4
- 6. Sidney Poitier 5
- 7. Jane Fonda 19
- 8. James Dean 12
- 9. James
- 10. Glenda Jackson 8
- 11. John Wayne 2
- 12. Grace Kelly
- 13. Sophia Loren 20
- 14. Kirk Douglas 9
- 15. Clint Eastwood 3
- 16. Tony Curtis 17
- 17. Meg Ryan 14
- 18. Martin Landau 11
- 19. Robert Redford 13
- 20. Cybil Shepherd 15
- 21. Doris Day 10
- 22. Natalie Wood
- 23. Eve Marie Saint 16
- 24. Marilyn Monroe 7
- 25. Frank Sinatra 6

## Page 7, Dingbats

Bury the hatchet  
Green with envy  
I only have eyes for you  
Losing your marbles  
A pair of pants  
A face like thunder  
A fly in the ointment  
Man of the moment  
Good for nothing  
A cut above the rest  
Time On your hands  
Driven up the wall

## Page 9 Sudoku



## Page 5 Riddles

- 1. An Echo 2. Photographer 3. ENT (Eight Nine Ten) 4. Heroine
- 5. Standing Back To Back 6. Bookkeeper 7. 3 Brothers 4 Sisters 8. A candle.
- 9. Silence 10. Incorrectly 11. A map 12. It has 2 syllables.

## Page 3 Code breaker

	9	F		9	F		9	F		23	M		8	H		4	Q		6	S										
18	V	11	I	24	Z	11	I	5	E	16	R		26	A	1	D	5	E	4	Q	25	U	26	A	12	5	E			
		22	X			21	N		19	Y		21	N		10	L		11		11	I									
10	L	26	A	21	N	2	G	25	U	11	I	6	S	8	H		17	P	25	U	12	6	S	7	C	8	H			
		12	T			5	E		21	N		25	U		10	L												14	K	
21	11	I	12	16	R	13	O	2	G	5	E	21	N		5	E	23	M	20	B	16	R	19	Y	13	O				
		13	O		20	B				12	T			6	S		26	A												
25	U	21	N	7	C	13	O	25	U	12	T	8	H		26	A	6	S	7	C	16	R	11	20	B	5	E			
				15	W		16	R						6	S							20	B		13	O				
26	A	24	Z	26	A	10	L	5	E	26	A		25	U	21	N	10	L	5	E	26	A	16	R	21	12	T			
		5	E					18	V		20	B		11	I		16	R		8	H									
6	S	17	P	13	O	21	N	2	G	5	E		3	J	5	E	12	T	12	11	6	S	13	O	21	N				
		8	H		13	O		6	S		5	E					26	A		26	A		23	M						
8	H	19	Y	17	P	21	N	13	O	12	T	11	I	7	C		21	N	25	U	21	N	7	C	11	I	13	O		
	16	R		5	E		19	Y		12	T					19	Y		6	S		5	E							

## Page 12 Word search

P	A	G	N	I	K	O	O	C	I	I	G	P	S
M	A	H	M	L	C	H	O	I	C	E	N	O	N
P	N	O	H	F	A	M	I	L	Y	N	I	V	E
G	C	M	A	Q	U	A	L	I	T	Y	R	G	V
N	N	E	R	E	L	I	A	B	L	E	A	T	I
I	H	I	P	U	N	C	T	U	A	L	C	D	T
N	E	N	G	E	G	N	I	P	P	O	H	S	C
A	A	S	I	N	S	P	I	R	I	N	G	R	E
E	L	T	D	E	V	L	O	V	N	I	N	I	T
L	T	E	K	I	C	H	E	L	P	I	N	G	O
C	H	A	L	T	D	E	N	I	A	R	T	M	R
D	D	D	P	N	O	I	N	A	P	M	O	C	P
A	P	P	O	I	N	T	M	E	N	T	S	E	R
T	G	N	I	E	B	L	L	E	W	T	F	T	N

- INVOLVED
- WELLBEING
- CHOICE
- HOMEINSTEAD
- TRAINED
- CARING
- HELPING
- COOKING
- APPOINTMENTS
- PROTECTIVE
- CLEANING
- SHOPPING
- HEALTH
- RELIABLE
- COMPANION
- INSPIRING
- PUNCTUAL
- QUALITY
- FAMILY

# Answers & solutions

Page 4 Beatles wordsearch  
& number pathway



12	3	8	1	7	9	1
32	8	7	1	3	2	1
14	4	17	4	7	2	4
5	8	2	5	9	5	7
9	3	1	4	2	1	3

2	3	1	2	3	9	1
13	21	19	1	5	8	9
7	15	13	8	8	11	24
4	8	7	8	7	3	13
2	9	6	9	2	2	1

Page 9 Sudoku

6	5	9	3	1	4	2	8	7
1	8	7	6	5	2	4	3	9
2	3	4	8	9	7	5	1	6
4	2	6	1	3	5	9	7	8
8	7	1	9	4	6	3	5	2
5	9	3	2	7	8	6	4	1
3	1	2	5	8	9	7	6	4
7	6	5	4	2	1	8	9	3
9	4	8	7	6	3	1	2	5

Page 12 Daily quick crossword

1	A	D	R	I	F	T	4	O	S	C	A	R	S			
	N		I		L			I		B		H				
8	S	E	P	I	A		9	C	A	N	D	O	U	R		
	W		O		R		O		U		U		I			
10	E	A	S	T	E	R	N		11	O	P	T	I	N		
	R		T					S		U				E		
			12	E	L	13	E	V	E	N	S	E	14	S		
15	B					M		N				A		16	L	
17	A	I	18	S	L	E		19	S	W	20	A	N	S	E	A
	S		U		R		U			R		H			W	
21	S	U	R	P	A	S	S		22	G	R	I	E	F		
	E		E		L					U		M			U	
23	T	I	R	A	D	E		24	S	E	R	I	A	L		

# Staying safe and well at home

The outbreak of COVID-19 presents the country's most significant challenge in years. We understand this is an extremely worrying time for everyone, not least for the older and more vulnerable members of society and their loved ones.

We have strict measures in place to ensure the safety of both clients and CAREGivers. This includes the correct use and disposal of suitable Personal Protection Equipment (PPE) and robust infection control training and hygiene

measures which our CAREGivers are carefully following. We also continue to follow direction provided by the UK's Public Health Authorities and World Health Organisation and keep providing updates to Caregivers and to clients and families.



**Everything we do is always with the wellbeing of our clients and CAREGivers foremost in our minds at this difficult time. We join their families in doing everything we can to keep them safe.**

Our CAREGivers are here to deliver essential care to clients, whether that be live in care or hourly care and also offer support such as advice to stay physically and mentally active and well at home, nutrition and exercise. They can also support with shopping and picking up medication and helping older people to stay connected with family and friends remotely through technology. We are following the Governments guidance on delivering safe and effective At Home Care during this time to ensure that we are minimising the risk of spreading the illness whilst still providing our vital service to clients so that they can stay safe and well with- in their own home.

**Call us anytime on 020 8022 5237**

or visit our website

**[www.homeinstead.co.uk/wandsworth](http://www.homeinstead.co.uk/wandsworth)**

# Useful numbers

## In Wandsworth

Parkinson's UK	0808 800 0303
Diabetes UK	0345 123 2399
British Heart Foundation	0300 330 3311
Admiral Nursing	0300 304 0028
Wandsworth Learning Difficulties & Learning Disabilities Network	020 8516 7764
National Careline	0800 063 3784
Carers UK Information and Support	0808 808 7777
Wandsworth Carers Centre	0208 877 1200
St George's Hospital	0208 672 1255
Queen Mary Hospital	020 8487 6000
Wandsworth Council Adult Social Services	02088717707
Healthwatch Wandsworth	0208 5167 767
Wandsworth Community Safety	0208 8716 567
LFB Free Smoke Alarm Service	0800 028 4428
Action Fraud	0300 123 2040
Victim Support	0808 1689 111
Citizens Advice	0345 4040 506
Office of the Public Guardian	0300 456 0300
Solicitors for the Elderly	0844 567 6173
Will Aid	0300 0309 558
Cruse Bereavement Care	0808 808 7777
Pearl Pharmacy, 31 Clapham High Street, SW4 7TR	020 7622 3147
Wandsworth Pharmacy, 96 Garratt Lane, Wandsworth, SW18 4DH	020 8874 1723
Lords Pharmacy, 98 Tooting High Street, Tooting, SW17 0RR	0208 672 5537
Westbury's, 84-92 Streatham High Road, SW16 1BS	020 87691919
Lloyds Pharmacy 80 Dog Kennel Hill, SE22 8BB	020 77336195

Home  
Instead

SENIOR CARE®

*To us, it's personal.*

**WANDSWORTH**

---

T. 020 8022 5237

---

A122 Riverside Business Centre  
Bendon Valley, London SW18 4UQ  
[www.homeinstead.co.uk/wandsworth](http://www.homeinstead.co.uk/wandsworth)

## Wandsworth's "Outstanding" CQC rated care provider

(Ans) Electric Avenue, Brixton

