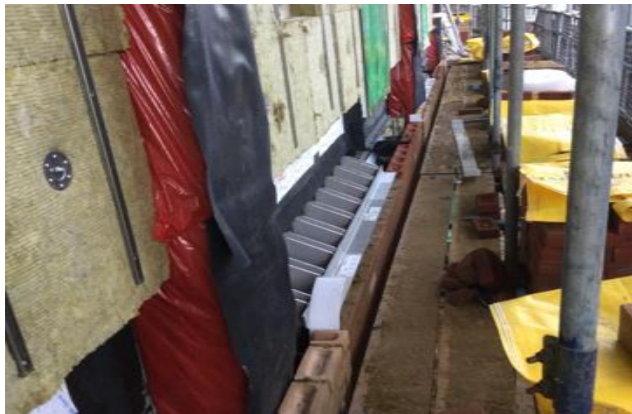


Date: October 2020

THE LATEST NEWS AND UPDATES FOR OCTOBER

WORK IN PROGRESS

Level 1 – masonry support system



South Elevation – brickwork progress



Level 2 decking – SFS, insulation, brick channels complete, all windows fitted



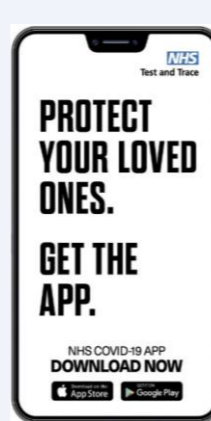
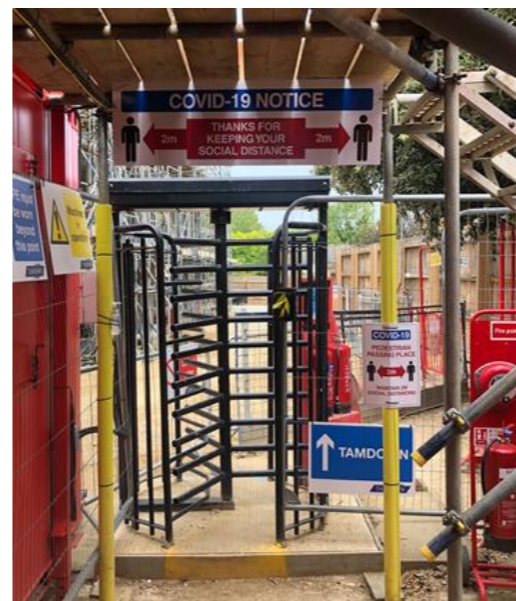
COVID-19 MEASURES



Canteen – reduced seating



Sanitising Station & Sign-in Area



NHS Covid-19 App posters are displayed on site. We encourage our colleagues and operatives to download the app where use it where necessary to check in to venues to help track the virus. The app has a number of features:

- Trace: find out when you've been near other app users who have tested positive.
- Alert: lets you know the level of coronavirus risk in your postcode district.
- Check-in: get alerted if you've visited a venue where you may have come into contact with coronavirus, using a simple QR code scanner.
- Symptoms: check if you have coronavirus symptoms & see if you need to order a test.
- Test: helps you order a test if you need to.
- Isolate: keep track of your self-isolation countdown and access relevant advice.

MEET THE TEAM



Ian Winsor
Senior Project Manager

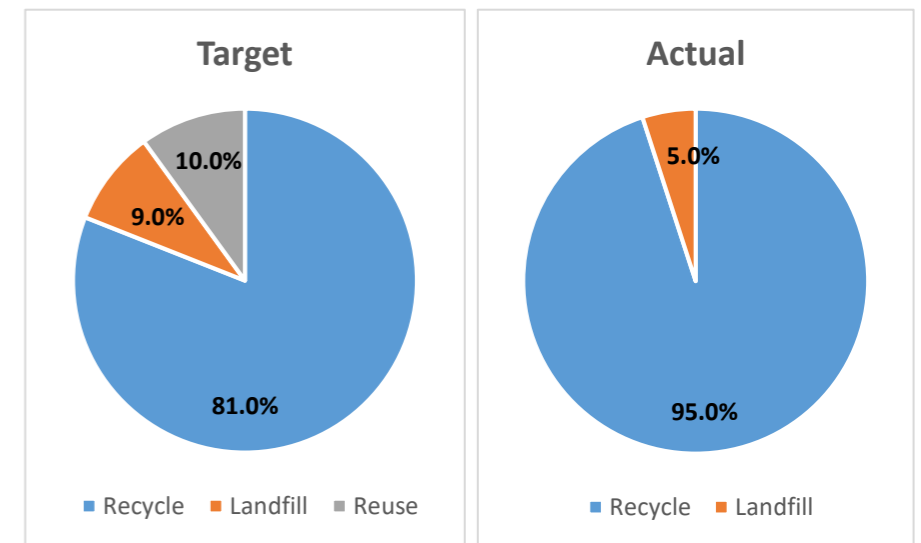


Ayda Yedekcioglu
Trainee Site Assistant
Covid-19 Supervisor

HEALTH, SAFETY & ENVIRONMENTAL NEWS

- Bessborough Rd. recorded an average of 22 workers onsite in October.
- The Health and Safety audit average score = **100%**
- Covid-19 Site audit score = **100%**
- Our reuse / recycling score = **95.0%**

Site Waste Chart



Percentage by Waste Stream

