

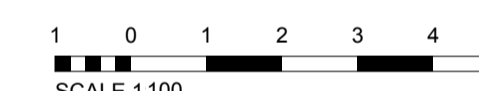
**Elevation - north**

1 : 100



**Ground Floor Area 2**

1 : 100



**Elevation - south**

1 : 100

Scale 1 : 100 @ A1 and 1 : 1000 @ A1

**Key**

**Housing Type**

- 2 bed 4 person 91 to 92m<sup>2</sup>
- 4 bed 6 person 125 to 135m<sup>2</sup>
- Entrance to individual flats

**Area 2:**

Number of units provided : 4

**Housing mix:**

- 2 x 2b 4p flats
- 2 x 4b 6p flats

The floor area differs slightly from flat to flat because of the position of the existing columns.

Area 2 Total GEA (Units 3 to 6): 156m<sup>2</sup>

Area 2 Total GIA: (units 3 to 6): 143m<sup>2</sup>

- Unit 3 GIA 91m<sup>2</sup>
- Unit 4 GIA 124m<sup>2</sup>
- Unit 5 GIA 134m<sup>2</sup>
- Unit 6 GIA 93m<sup>2</sup>

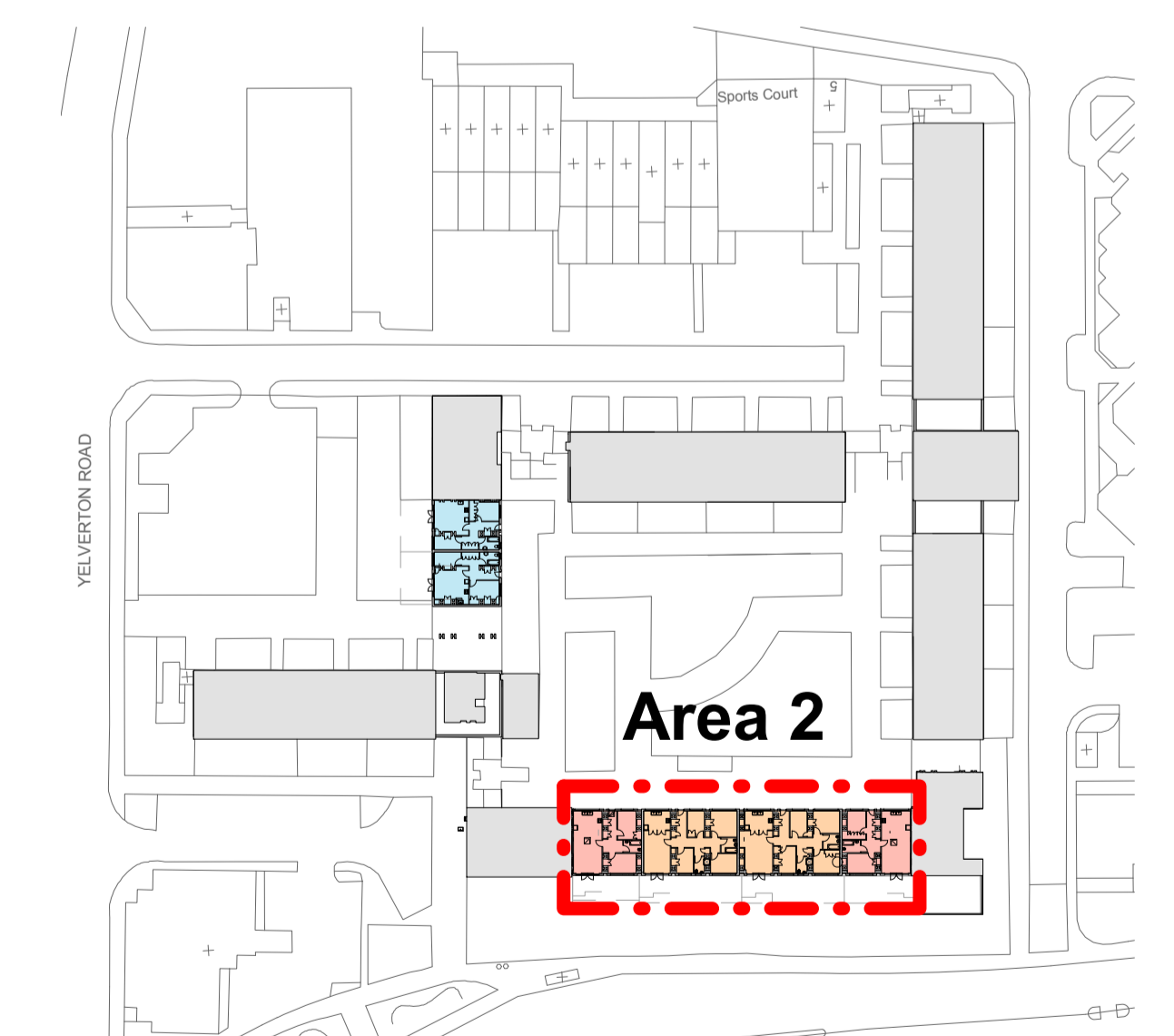
**Accommodation Schedule**

**Unit 3 and 6 - 2b 4p flats**

- K/D/L 40m<sup>2</sup>
- Bedroom 1 incl st 14m<sup>2</sup>
- Bedroom 2 incl st 13m<sup>2</sup>
- Bathroom 6m<sup>2</sup>
- Circulation 11m<sup>2</sup>
- Storage 3m<sup>2</sup>
- Outdoor amenity 38 - 44m<sup>2</sup>

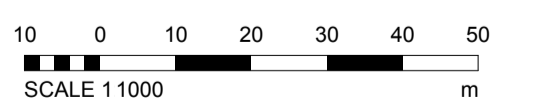
**Unit 4 and 5 - 4b 6p flats**

- Kitchen 11m<sup>2</sup>
- Dining/Living 25 - 28m<sup>2</sup>
- Bedroom 1 incl st 14 - 17m<sup>2</sup>
- Bedroom 2 incl st 11 - 13m<sup>2</sup>
- Bedroom 3 incl st 10m<sup>2</sup>
- Bedroom 4 incl st 10m<sup>2</sup>
- Bathroom 1 5m<sup>2</sup>
- Bathroom 2 4m<sup>2</sup>
- Circulation 18 - 19m<sup>2</sup>
- Storage 4m<sup>2</sup>
- Outdoor amenity 54 - 58m<sup>2</sup>



**Key Plan**

1 : 1000



**Richmond and Wandsworth SSA**

**Design Service**

Hussein El-Bahrawy, RIBA Head of Design Service  
The Town Hall, Wandsworth High Street, London SW18 2PU  
Tel. 020 8871 6000

