

# Brightside

Issue 190 January 2020

The magazine of Wandsworth Council



Happy  
New Year  
2020







# CAN YOU FOSTER?



**Be there** for a child in Wandsworth...  
...and we'll **be there** for you

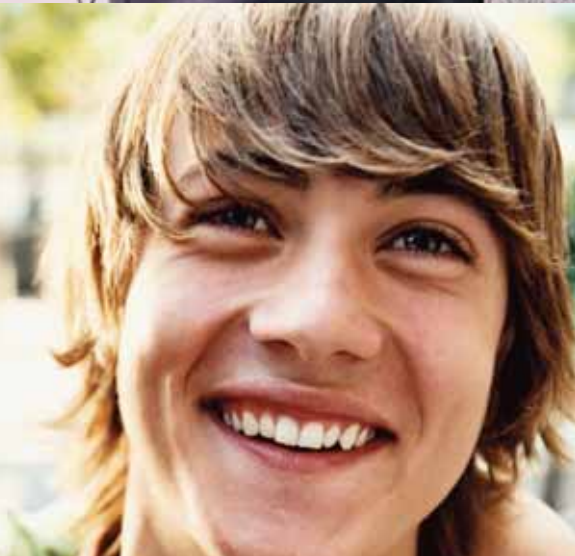
**Come to one of three events  
taking place on the dates below  
(10am - 12noon or 2pm - 4pm or 6pm - 8pm)**

**Thursday 16 January 2020  
Thursday 20 February 2020  
Thursday 19 March 2020**



**Call us now on (020) 8871 6666**

Read about our foster carers' experiences at  
[www.wandsworth.gov.uk/carer\\_experiences](http://www.wandsworth.gov.uk/carer_experiences)



To find out more:

 [wandsworth.gov.uk/fostering](http://www.wandsworth.gov.uk/fostering)

 [carerrecruitment@richmondand](mailto:carerrecruitment@richmondandwandsworth.gov.uk)

 [wandsworth.gov.uk](http://www.wandsworth.gov.uk)

# Inside

## January 2020

Cover: Credit Neil McCaleer



### History comes back to life

Huguenot burial ground becomes a park **PAGE 5**

### How to request a bike hangar

Register your interest for new bike parking. **PAGE 6**

### Bridge refurbishment

Upgrade for Wandsworth Bridge. **PAGE 7**

### Climate change action

Tackling emissions in 2020. **PAGE 8**

### Nabbing flytippers

Offenders caught on film. **PAGE 11**

### Civic Award winners

Shining the spotlight on unsung stars. **PAGES 13-14**

### Get involved in your local park

Meeting local Friends' Groups. **PAGES 18-19**

### What's On

Events around the borough. **PAGES 27-29**



To obtain a copy of Brightside in large print please telephone (020) 8871 7266 or email [brightside@wandsworth.gov.uk](mailto:brightside@wandsworth.gov.uk)

#### YOUR BRIGHTSIDE

Your Brightside is distributed by London Letterbox Marketing. We expect all copies of Brightside to be delivered to every home in the borough and pushed fully through the letterbox.

It is produced by the council's corporate communications team. It is the only publication delivered to every household in the borough. We would like to thank all our advertisers for their support. Brightside will consider display advertisements from non-council bodies (excluding recruitment) and reserves the right to decline advertisements. The council neither accepts responsibility for the content of nor endorses any non-council advertisements.

• Editorial (020) 8871 8902. • Advertising (020) 8871 7266

If you have a comment about the magazine please telephone: (020) 8871 8902/6173 or email: [brightside@wandsworth.gov.uk](mailto:brightside@wandsworth.gov.uk).

Brightside is printed on environmentally friendly paper, please recycle.

# Secure your status

A free drop-in information session for EU nationals who want to apply for settled status will be held at the town hall in Wandsworth High Street this month.

EU citizens can secure their rights to live in the UK after Brexit by applying for settled status. You can find out more at the event on January 23 from 10am-2pm.

There is no need to book, but please take along your passport and national insurance number if you have one.

The EU Settlement Scheme is free and is now open to EU citizens and their non-EU family members. To make a successful application you just need to prove your identity, prove that you live in the UK and declare any criminal convictions. You must apply before December 31 2020. For more information visit [gov.uk/eu-settled-status](http://gov.uk/eu-settled-status)

In partnership with Wandsworth Council, Citizens Advice Wandsworth can help vulnerable residents to apply. For more information contact the CA Wandsworth EU Project team at [cuadvice@cawandsworth.org](mailto:cuadvice@cawandsworth.org) or visit [www.cawandsworth.org/eu](http://www.cawandsworth.org/eu).



## HOME-START WANDSWORTH NEEDS YOU!

Home-Start Wandsworth is looking for people to join their network of volunteers helping families struggling with post-natal depression, isolation, financial hardship or disability. Families are offered two to four hours of support a week in their own homes. Home-Start Wandsworth have 77 trained volunteers in their network supporting 77 families and helping 132 children thrive. The next volunteer training course will run from the February 26 to March 25. Visit [homestartwandsworth.org.uk](http://homestartwandsworth.org.uk).

## BANK YOUR BRA

Wandsworth Council has teamed up with Against Breast Cancer to put a collection point in the Customer Services Centre at the town hall in Wandsworth High Street. Find it between the two sets of automatic sliding doors as you enter the building.

The collected garments will be sorted by the charity and wearable bras will be sent to developing countries where bras remain too expensive to produce locally. Bras that aren't wearable any more will be recycled for their fabric.

For every tonne of bras collected, Against Breast Cancer receives £700 to fund research.



## WARD CHANGE PROPOSALS

The independent Local Government Boundary Commission for England is asking local people to comment on its draft proposals for new Wandsworth Council ward boundaries.

The commission's draft recommendations propose that Wandsworth should have 58 councillors in future, two fewer than now, representing 14 three-councillor wards and eight two-councillor wards across the council.

The public consultation will end on February 17. See full details consultation.lgbce.org.uk and [www.lgbce.org.uk](http://www.lgbce.org.uk).

## ONE TRUST

One Trust, which works with people with profound and multiple learning disabilities and their family carers, is looking for independent trustee board members.

People with experience of being a trustee and those with an accountancy background are especially welcome. Please apply by January 31. Visit [onetrust.co.uk](http://onetrust.co.uk) for details.

# Get your child vaccinated

Wandsworth is in the grip of a measles outbreak, with more than 80 cases reported in the last three months of 2019.

Most of the cases are in school children and teenagers aged 10-19 who have not had two doses of the measles, mumps and rubella vaccine (MMR).

Dr Rebecca Cordery, immunisations lead at PHE's South London Health Protection Team, said: "Measles is a highly infectious viral illness that can lead to serious complications and while it is circulating in Wandsworth we are urging parents to get their children vaccinated. The best protection against measles is having had two doses of the MMR vaccination but too many children and teenagers in London are either unvaccinated or partially vaccinated. Wandsworth families should attend a local immunisation clinic or contact their GP to make an appointment.

"The symptoms of measles to look out for include cold-like symptoms, sore red eyes, a high temperature and a rash. If you experience these symptoms seek medical attention, but phone ahead before visiting a doctor so arrangements can be made to prevent others from being infected."

Measles, Mumps and Rubella (MMR) vaccine is given via two doses. Children usually have their first dose at one year and their second dose from 18 months or pre-school. Some children miss out on the second dose for various reasons. Your child will not be fully immunised against measles if they have not received both doses.

Cabinet member for health and social care Cllr Melanie Hampton said: "Measles isn't a harmless childhood disease and some people go on to develop very serious complications so please make sure you and your children are fully immunised."

The Wandsworth School Age Immunisation Team are also able to offer the MMR vaccine. Email [hrch.immunisationteam@nhs.net](mailto:hrch.immunisationteam@nhs.net) or call (020) 3903 3374. For further information on Measles and the MMR vaccine visit [nhs.uk/conditions/measles](http://nhs.uk/conditions/measles)





# History comes back to life

A SMALL BUT HISTORICALLY IMPORTANT PIECE OF OPEN SPACE THAT PLAYS A PROMINENT ROLE IN THE STORY OF WANDSWORTH IS BEING TURNED INTO A LOCAL PARK.

The Huguenot burial ground at the top of East Hill which is home to a number of listed tombs and graves is undergoing a £300,000 restoration and landscaping project.

The walled burial ground, covering just under half an acre and also known as Mount Nod, was created towards the end of the 17th Century as a burial ground for Huguenot refugees – people who fled religious persecution in France after embracing the Protestant faith.

Many of these refugees settled in Wandsworth, attracted by the cloth and textile mills which lined the banks of the River Wandle. Their skills as hat and dress-makers helped

establish 17th and 18th Century Wandsworth as a famed centre of fashion and clothes making.

Today's Wandsworth borough coat of arms features the tears of the Huguenots – representing the tears of joy they shed at finding sanctuary in this part of London.

The burial ground contains a number of historic tombs dating as far back as 1687 while a 1911 memorial refers to the Huguenots and their contribution to the life of the borough.

**The Wandsworth Society is hosting a talk on the Huguenots on February 13. See page 29.**





# How to request a bike hangar

Residents who own bicycles but struggle to store them inside their homes can request a bike hangar for their street.

The hangars can safely and securely store up to six bikes and are accessed by people who have signed up to the scheme, paid a membership fee and been given a key.

Wandsworth is already home to nearly three dozen hangars on local estates. In addition, providing safe and secure bike storage for residents is a key planning condition on all new housing developments.

Cabinet member for transport Cllr Paul Ellis said: “Making it easier for local people to switch to two-wheeled transport is a key element of our environmental and sustainability strategy



which will be at the heart of town hall policies between now and 2030.” For more on cycling in Wandsworth and a link to the online form to register your interest in a hanger, visit [wandsworth.gov.uk/cycle](http://wandsworth.gov.uk/cycle)



## Don't stop in bike boxes

Motorists are reminded that it's an offence to drive into Advanced Stop Lines (ASLs), also known as 'bike boxes', when traffic lights are red.

They were brought in to make traffic lights safer for cyclists by giving them a clear place to wait ahead of other traffic. But many motorists and motorcyclists don't realise they must stop at the first white line and not pull into the box when lights are red or the junction ahead is blocked. Failure to comply can lead to a fine and points on your licence.

Visit [wandsworth.gov.uk/cycle](http://wandsworth.gov.uk/cycle) for information on cycle parking, maintenance, safety and training, cycle hire, cycle routes and to read the council's cycling strategy.

Photo: Whitemay

# Bridge refurbishment



Major refurbishment work to Wandsworth Bridge will be carried out this year.

The works are expected to begin in February and last for around ten months as part of a project costing around £6m.

But to ensure traffic is kept moving, at least two of the bridge's four lanes will remain open at all times, allowing vehicles, buses and bikes to cross the river in both directions. The bridge will also remain open at all times to pedestrians.

The works will include a series of detailed structural repairs, carriageway resurfacing, waterproofing and corrosion protection. The bridge will also be repainted to significantly improve its appearance and protect its steel structure. Eco-friendly low energy LED floodlights will be installed underneath its arches so they can be lit at night – making it more of a landmark feature on

the Thames, in a scheme similar to the one recently carried out upstream at Putney Bridge.

And its existing street lamps will be replaced with Victorian-style architectural lights, further enhancing the appearance of this strategic river crossing. Funding for the project is coming from the strategic community infrastructure levy (SCIL) which is money levied on property developers in the borough to help pay for important infrastructure projects. Cabinet member for Transport Cllr Paul Ellis said: "We take our responsibilities for maintaining our bits of London's vital transport infrastructure very seriously indeed which is why we have been planning the refurbishment for some time and why we set aside the funds to pay for it in June 2018. It will ensure the bridge is in excellent condition long into the future."

Source: Public Health Annual Report 2016 - Diabetes in Wandsworth

Every week 15 people in Wandsworth are told they have diabetes



15,000 residents are living with the condition...



...and another 25,000 are on the verge of getting it.



TC2489 Becka 2.181



## TYPE 2 DIABETES KNOW YOUR RISK

Finding your risk of Type 2 diabetes only takes a few minutes. It could be the most important thing you do today...

Check your risk online at  
[nhsdpp.diabetes.org.uk/c/wandsworth](http://nhsdpp.diabetes.org.uk/c/wandsworth)





# Climate change action

Our Pledge to be:

**Carbon neutral by 2030** | **Zero Carbon by 2050**



“ Last year, Wandsworth Council declared a climate emergency. We have set a goal of becoming the greenest inner London borough by 2030 and we pledge to become a carbon neutral organisation by 2030 and zero carbon by 2050.

To achieve these goals the council has committed to a strategy that will address all areas of concern including transport, air quality, water, waste, energy, green areas and development. We're also going to work on lowering the carbon emissions of the borough as a whole and will work with the community and its residents on how they can lower their carbon emissions.

Our goals are ambitious because they must be and to reach them we will need to work together. Collectively, we can achieve a healthy and sustainable environment for everyone, particularly our children.

This is the start of our journey on climate change and while we don't have all the answers, we do have a deep commitment to fighting climate change and enabling our community to join us in this fight.



Leader of Wandsworth Council,  
Cllr Ravi Govindia

## Progress so far includes:

- All major development schemes must now include transport improvements and the council is working with Transport for London and transport providers to improve public transport. Low traffic neighbourhood schemes and school streets are being developed, further electric car charging points are being installed and cycling infrastructure is being improved.
- The council has agreed to lobby TfL for cleaner buses and reduced queues at traffic lights and a new Air Quality Action Plan is being developed.
- A plan will be drawn up to make council buildings work towards becoming as close to zero-emission as possible. Work is underway to improve enable homeowners and private housing providers to improve energy efficiency.
- An environment and sustainability action plan has been developed in conjunction with Enable, which manages borough parks. More trees are being planted. New approaches have been developed to manage green spaces to encourage resilience and biodiversity.
- A plan is being delivered to reduce water use across council sites and water fountains have been installed.
- Standards around CO2 emission reductions in planning applications are being rigorously applied.

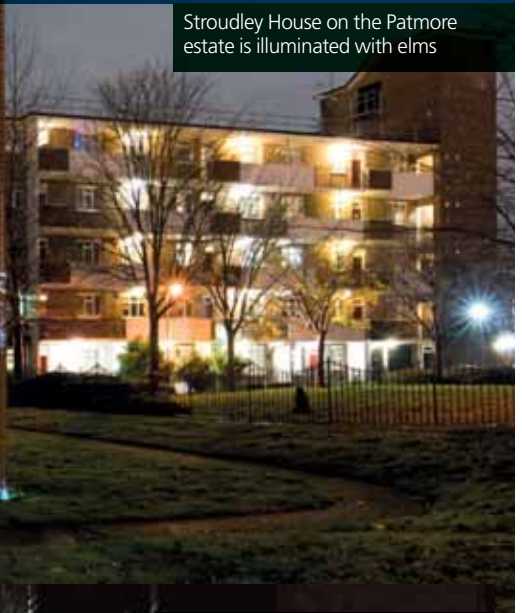
The full plan will be published this month and we will keep you updated on progress in every issue of Brightside this year.



# Stunning tree projections light up Nine Elms



Stroudley House on the Patmore estate is illuminated with elms



Hundreds of visitors and residents came out to see projections of moving elm trees in December during nine nights of the Light Up Nine Elms event.

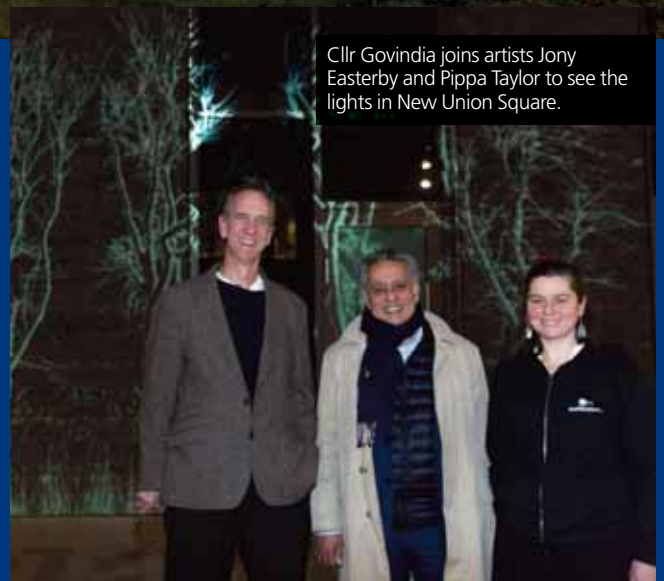
Artists Jony Easterby and Pippa Taylor beamed the lights onto buildings at nine locations including the Patmore estate's Stroudley House (pictured), Elm Quay Court, New Union Square near the US Embassy (pictured) and the R&F construction site on Nine Elms Lane.

The large-scale installations were specially commissioned by Wandsworth Council, using drawings of the real elm trees growing on Nine Elms Lane to celebrate the long history of the area's trees.

Rooted in the local community, these elm trees have been a landmark for generations. The Nine Elms place name has been traced back to the 17th century and nine elm trees were known to be standing on Nine Elms Lane in the 1840s. The row of elms are thought to have been replanted several times since then. In January 2019, the Nine Elms community re-planted the last two elm trees which had been missing since one tree was blown down in a storm and one was felled due to disease.

Wandsworth Council leader Cllr Ravi Govindia said: "This celebration of our nine elm trees is a wonderful way of drawing together communities through a shared local history. After helping to plant the two missing elm trees last January, I'm delighted that these projections are brightening up the area this winter for everyone to enjoy."

Find out what's on in Nine Elms at [nineelmslondon.com](http://nineelmslondon.com)



Cllr Govindia joins artists Jony Easterby and Pippa Taylor to see the lights in New Union Square.



Celebrated: The trees that gave Nine Elms Lane its name stand opposite the US Embassy.

# MyWandsworth campaign

one year on



It's been a year since Wandsworth Council launched the #MyWandsworth campaign to keep the area looking at its best. With help from residents across the borough and the council's dedicated street cleaning teams a great deal has been achieved, but there's always more to do.

## Here are a few of the highlights

- Eye-catching pink bins have been placed around Clapham Junction railway station and Tooting Broadway tube station, as part of a trial to encourage people to put their gum in the bin rather than drop it on the pavement. So far, the trial has made a big difference and the council will keep monitoring progress. This along with SMART bins is one of the many ways the council is using new technology to tackle littering.
- Nearly 250 children between the ages of 4 and 11 took part in a poster competition celebrating what's great about the local area highlighting that any littering, even if it's dropping a sweet wrapper, is unacceptable. Congratulations go to all the winners from Honeywell, Trinity St Mary's, Swaffield, Falconbrook, and West Hill primary schools.
- A hundred volunteers turned out for Plogolution's largest ever plog in King George's Park. Plogging is the new workout trend from Sweden. Rather than jogging on by the rubbish littered on the street or in a park, ploggers pick it up and dispose of it correctly instead. This year Wandsworth schools are invited to have their own plog. Visit Plogolution website for further details [plogolution.com](http://plogolution.com)

The council spends **£4 million a year** keeping the borough clean and tidy

**17,300+** littering and fly-tipping fines issued since April 2017

**250 primary-aged children** entered the #MyWandsworth poster competition.

**100+** people joined Wandsworth's largest plog



# MyWandsworth campaign **coming up**

To keep up the momentum in the fight against litter, the council has lots planned as part of the #MyWandsworth campaign this year.

## Here are just a few of the things coming up

No one likes a fly-tipper, which is why Wandsworth council will be launching a CCTV appeal to catch litter louts in the act.

Litter blights our streets, parks and town centres. It's not acceptable, and residents have told us that tackling this is a key priority for them. To address this head on, the council will be clamping down on the irresponsible few who think they can get away with this illegal behaviour.

CCTV footage of people illegally dumping mattresses, sofas and other rubbish will be published on Wandsworth's YouTube channel, asking local residents to give the council any information they have about the fly-tippers in the videos.

Keep an eye out for the videos on the council's website [wandsworth.gov.uk/mywandsworth](http://wandsworth.gov.uk/mywandsworth)



## Report fly-tip offenders

Remember you don't need to see the videos to report fly-tip offenders. You can also report an incident by telling us what you saw, or sending a picture in.

Tell us,

- The circumstances, e.g. if you saw the fly-tipping, the date and time it took place and a description of any vehicles involved, plus registration number.
- Take a picture of the incident, making sure you don't put yourself or others at risk to do this.
- Location: side of the road, back alleyway, railway embankment, in a river, and whether it was on private or council land.
- The amount and type of waste, eg a few bags of rubbish, a fridge, a sofa.

Get in touch by email

[flytipwitness@richmondandwandsworth.gov.uk](mailto:flytipwitness@richmondandwandsworth.gov.uk)

call us 020 8871 8558 or via our Report It app which is available on iPhone, Android and Windows smartphones.

## Get fit in the new year

Wandsworth Council is also partnering with Plogolution to bring a monthly plog to the borough this year.

People of all ages, and fitness abilities, will be welcome to join a litter pick - either 2k walk or a 5k run on Saturday February 1, 11am in King George's Park. It's free to sign up and good for the environment. Go online to find out more and sign up, [wandsworth.gov.uk/mywandsworth](http://wandsworth.gov.uk/mywandsworth)



**£400**  
fine for  
fly-tipping

We will also be doing more to target fly-tipping hotspots, where people dump rubbish illegally.

# Building 1,000 Homes for Wandsworth People

## More homes and greater housing choice

Across London a shortage of homes and rising property prices is making it more difficult for people to find a home that is affordable to rent or buy. Wandsworth council is responding to this through

- Our housing for all programme - the council is building 1,000 homes for Wandsworth residents and workers to rent or buy with at least 600 of these available at substantially below market prices.
- Two major estate regenerations delivering a mixture of social housing and privately owned homes on the Winstanley and York Estates and the Alton Estate to build new communities and deliver vibrant neighbourhoods.
- To diversify the housing offer so all sectors of our communities can benefit from the opportunities that we will deliver.



In July 2019, Housing Minister Esther McVey met housing estate residents in Battersea during a visit to a new council home building development on the Savona Estate, which is providing 57 new homes aimed at Wandsworth residents on lower incomes. Edward Foster Court in Nine Elms (pictured above) will provide two disabled units and 19 general used units, with priority being given to those living local to the scheme and those with an urgent need to move.

Here is a snapshot of our major council housebuilding programme so far:

**99** new homes are either complete or due to complete by April 2020.



A further **176** homes are either currently on site or have planning approval.

Over **350** homes are currently in design feasibility stages.



We spoke to Miss Jacqueline Heeks who received the keys to her new home just before Christmas.

“I’m very happy that Wandsworth Council has housed me. I now have a beautiful three bedroom apartment with a wet room that the council has built.



I was previously living in an infested home that was overcrowded. I’ve been lucky to move into my new home before Christmas and my Birthday was on 14 December, so it was a nice birthday present for me. I hope I will be living here with my two sons for the rest of my life.”





## Housing for All - Extending the Offer

There are several ways local people who either work or live in the borough can benefit, depending on circumstances. This is the range of support that is available.

### Shared Ownership

- Shared Ownership allows people to buy a share of a home with rent paid on the remainder. The share of the property that you own can increase over time.

### Intermediate rent

- Intermediate rent offers people the opportunity to rent a home at less than the market rate. These homes are particularly targeted at households in employment who are, for instance, looking to move on from private rented housing. The rent is subsidised, normally at around 20%-40% lower than what you would expect to pay if you were renting on the private market.

## Housing for All - Offers to Council tenants

### House Purchase Grants

- These are grants offered to council tenants to help them purchase a home on the private market in or outside the borough. Grants of up to £100,000 can be made subject to a financial eligibility test. The benefit of the scheme is that once a rented home is released that home can then be re-let to someone from the council's waiting list.

### Right to buy and Right to Part Buy

- Right to Buy and Right to Part Buy allows council tenants who lived in their property for at least three years to purchase their home at a discounted rate which varies according to the length of the tenancy.

# Housing for all

Wandsworth Council opening the door to Home Ownership

## The Regeneration programme

Our regeneration projects aim to improve existing areas of Wandsworth to cultivate better housing, transport, leisure and business opportunities in the borough, where people are proud to work, live and visit.

“ The overall aim of our regeneration and council build programme is to provide many more opportunities for Wandsworth citizens to own and buy. The programme recognises the need to provide not just low cost homes to rent but to provide homes that are targeted to and prioritised for Wandsworth workers and residents. ”

**Cllr Kim Caddy,**  
cabinet member for housing



## Winstanley and York Road Regeneration programme

The Winstanley and York Road Joint Venture partnership with Taylor Wimpey aims to provide more social and affordable housing and a new park will be used by the whole community. The regeneration will deliver new commercial and community facilities, jobs, education and training opportunities.

## Alton Regeneration programme

Alton Green will deliver well-designed homes for existing and new residents, two new community centres with fantastic facilities, public realm improvements and a better-connected estate with improved links and pedestrian and cycle routes.

- Planning application for the regeneration of the Alton Estate submitted in **June 2019**.
- Winstanley and York Gardens will deliver **938** new affordable homes for local people, including **530** new council rent homes.

The Alton Regeneration programme will deliver over **1,100** affordable and private new homes.



# Meet the 2019 Civic Awards winners

The annual Wandsworth Civic Awards shines a light on people of all ages that make fantastic contributions to day-to-day life in Wandsworth.

Nine awards were given to people and teams from across the borough, recognising the commitment they have made to helping others and improving our community.

Find out how to nominate someone for a 2020 award at [wandsworth.gov.uk/civicawards](http://wandsworth.gov.uk/civicawards)



Mitzi Hassani



Good Guys Decorating



Marlene Irons

■ **Marlene Irons** works tirelessly for the Battersea Crime Prevention Panel, including running the annual fundraising Battersea Ball and fundraising for the Battersea Summer Scheme for young people. She is also a dedicated Neighbourhood Watch co-ordinator.

■ **Mitzi Hassani** runs the charity shop Embrace which has become a local hub for those in need. All the money raised is used to support local people and projects in Battersea. The shop is a kind of 'drop-in centre' for people to have a chat and get advice, and Mitzi also runs events to help people get together, including a Christmas lunch.

■ **Good Guys Decorating** is a community-focused painting and decorating business. It uses part of the profits of decorating work to paint the bedrooms of children living in poverty or those suffering with mental health issues free of charge.

It was set up by Cyle Carth and Nick Lynch who, with the help of Carney's Community, overcame major challenges in their own lives and now want to give something back to the local community.





Ron Elam



Karen Horsford



Royal Airforce Air Cadets



S.T.O.R.M.

■ **Ron Elam** Before he retired this summer, Ron Elam served as a school governor in several Wandsworth schools for 50 years. In addition he has sat on and chaired independent admissions and exclusions appeal panels in Wandsworth and has participated in some 300 Ofsted inspections.

■ **Flt Lt Charlotte Fishman** was recognised for the positive impact she has made to life in Wandsworth over the past ten years working with the borough's three squadrons of the Royal Airforce Air Cadets and helping young people from all walks of life access the opportunities the cadets offer.

■ **Karen Horsford** won an award for the work she has done with Putney and Roehampton Boxing Club, which is making a real difference to the lives of young people from across the borough. The Boxing Club mentors young boxers on the dangers of carrying knives, as well as undertaking healthy eating and well-being programmes.

■ **S.T.O.R.M.** won a group award for empowering single mums, young people and adults to re-build their confidence and help them back into employment and education. It also runs a thriving youth club, including trips out and homework support. In the last 15 years it has helped thousands of people.

This year two new awards were given out to support the council's commitment to tackle climate change and become inner London's greener borough.

■ **The Wandsworth Tree Wardens**, an independent group of volunteers, won the new Environmental Category for their efforts to conserve, protect and improve the environment through the planting, care, nurture and cultivation of trees across Wandsworth.

■ **Glyn Goodwin** was granted a special award by the Mayor recognising his outstanding contribution to tackling climate change. Glyn spearheaded the petition to urge Wandsworth to declare a climate emergency.



The Wandsworth Tree Wardens



# World AIDS Day

The Mayor of Wandsworth, Cllr Jane Cooper, had an HIV test as part of the council's support of last month's World AIDS Day.

Testing for HIV is now as simple as a quick finger prick test, and early diagnosis means a person can access effective treatment, allowing them to manage their HIV as you would any long term chronic health condition, such as diabetes, and prevent onward transmission of the virus.

The Mayor had her test at the town hall as part of a day-long event organised with the council's partner Spectra.

Spectra holds regular HIV testing events across the borough. Visit [spectra-london.org.uk/all-events/](http://spectra-london.org.uk/all-events/) Free and confidential HIV testing is available in a range of health settings including GP surgeries. Symptomatic patients (those with specific symptoms) are encouraged to attend the Falcon Road integrated sexual health centre near Clapham Junction Station for testing and treatment. To find out more visit [www.shswl.nhs.uk](http://www.shswl.nhs.uk) or telephone 0333 300 2100 (Monday to Friday 8am-8pm).

If you'd rather take the test in the comfort of your own home, and you have no obvious symptoms of HIV, you can order a free postal test at [test.hiv](http://test.hiv)

The council's partner METRO also provides free advice and support services for Wandsworth residents with HIV locally - [metrocharity.org.uk/hiv/hiv-support-wandsworth](http://metrocharity.org.uk/hiv/hiv-support-wandsworth)



**Wandsworth**  
Lifelong Learning **W**  
Worth it.

THE BRIGHTER BOROUGH  
**Wandsworth**

**Worth enquiring.**

Ashley Redman - 07966 218591  
email: [apps@wandsworth.gov.uk](mailto:apps@wandsworth.gov.uk)  
[www.wandsworthlifelonglearning.org.uk](http://www.wandsworthlifelonglearning.org.uk)



**Worth its weight.**

**Apprenticeships at all levels in:**

Management, Business Admin, Customer Service, Child Care, Support Teaching & Learning.

**Funded short courses in:**

Team Leading, Customer Service, Conflict Management, Understanding Employment, Business and Enterprise, Financial Management, Social Media - The Basics

For the full range of courses contact us for further options

**Empower your Employees**



# TREE PLANTING

## In Private Gardens A Step By Step Guide

### WHY SHOULD WE PLANT TREES?

Trees are attractive in their own right and provide oxygen and shade, filter noise and dirt and provide a haven for wildlife. Planting one now should provide pleasure for generations to come.

### WHERE TO PLANT

Almost any garden can accommodate a tree. However, you need to pick the site carefully so that the tree does not cause problems to you or your neighbours as it grows, for example, the roots growing into the foundations of the house or by casting excessive shade to the house or garden. Pick a tree of appropriate size. Don't plant near pipes or cables.

### WHEN TO PLANT

November through to February is ideal but avoid times when the ground is frozen or waterlogged. If you buy a tree grown in a container you can plant it at any time but the height of summer is best avoided.

### DIGGING

Dig a hole wide and deep enough to accommodate your tree's roots without bending or breaking them. Dig it a couple of inches wider to allow for initial growth.

### STAKING

The tree only needs supporting so that it remains steady at the base. This prevents the roots moving when the tree sways in the wind and allows them to establish a firm grip.

### PLANTING

Plant the tree at the right depth - look for the nursery mark at the base of the stem. Back fill the hole until the tree can stand at the right depth. Stand the tree in the hole and cover the roots with the finest soil you dug out. Gently shake the tree up and down to sift the soil into the spaces between the roots. Add more soil and gently firm

### FINALLY

Remember to:

- Water the tree regularly
- Keep the base free from weeds
- Check the tie and adjust if necessary
- Remove stake after a couple of years

### A CORRECTLY PLANTED TREE

Buy a stout, straight stake from wherever you bought your tree. Orient the tree and stake so that the stake is on the 'up-wind' side of the tree. The tree and stake should both be upright and about 1.5 inches apart. The top of the stake only needs to be about 3ft in height for a tree about 8ft tall. Use the same ratio for trees of other sizes.

### A SELECTION OF TREES FOR GARDENS:

Snowy Mespil	Snake-Bark
Birches	Maple
May trees	Mountain Ash
Crab Apples	Whitebeam
Flowering	Judas Tree
Cherries	Conifers

To view these trees online visit:  
[wandsworth.gov.uk/leisure-and-culture/parks-and-open-spaces](http://wandsworth.gov.uk/leisure-and-culture/parks-and-open-spaces)

### SECURING

You should only need one tie with a short stake. Occasionally a second is needed if there is risk of the stem chafing against the stake. Buy a manufactured tie and spacer from wherever you bought your tree. The tie should be at the top of the stake.



# Get involved in your local park

FRIENDS OF GREENSPACES GROUPS WORK WITH THE COUNCIL TO A CONNECT LOCAL PEOPLE TO THEIR LOCAL GREEN SPACE, RUN EVENTS AND HELP SHAPE IMPROVEMENTS.

Wandsworth has proportionally the largest amount public green space in inner London - not just flagship parks, but also the smaller and less obvious green spaces too.

Two new Friends groups were formed in 2019. The **Friends of Coronation Gardens** support the Edwardian green space in Southfields between Merton Road, Pirbright Road and Standen Road.

The **Friends of Christchurch Gardens** came out of the War Comes Home project celebrating life in Battersea during World War II and raising awareness for Battersea's own Grade II listed memorial to civilians in Christchurch Gardens.

Last year the **Friends of Wandsworth Park** were involved in opening the new Riverside Terrace, creating a new public space in a formerly disused part of the popular park. They also played a vital role in securing Wandsworth Park's first Green Flag.

Battersea Park also celebrated receiving a Green Flag for another year. **The Friends of Battersea Park** have had a busy year, holding a number of events in the park including annual BBQ and dog show.

The **Friends of Furzedown** celebrated the inauguration of the refurbished Furzedown Pavilion in 2019. Largely inaccessible to the public for 30 years, it's now available for the community to use

**The Woodfield Project** celebrated the Woodfield Pavilion reopening as a community hub. The Woodfield Project is keen to hear from schools or community groups who want to get involved.

**The Friends of Tooting Common** hold a variety of different events and activities, including the annual Fun Dog Show in June.

**The Friends of Wandsworth Common** was launched in 2018, as an offshoot of the Wandsworth Common Management Advisory Committee, to reach out to users and local residents who share an interest in the common. The Friends have held a number of events, including inviting experts to speak on a number of topics relating to biodiversity on the common.

**Bramford Community Garden volunteers** meet up every Sunday from 12.30pm to 2pm all year round (followed by a cup of tea) to maintain the diverse 'garden within a garden'.

In addition to all these groups, there are two Management Advisory Committees (MAC) in Wandsworth: Wandsworth Common MAC and Tooting Common MAC.

A MAC is an elected group of volunteers, initially set up by Wandsworth Council, to monitor and advise the council and its contractors on the management of a greenspace on behalf of its users.



The new Wandsworth Park Riverside Terrace



The Woodfield Pavilion above, when it originally opened and how it looks now







In recognition of their passion and commitment each Friends Group and MAC were awarded a plaque and a tree by cabinet member for open spaces Cllr Steffi Sutters.



The council's Love Parks summer campaign included events such as this fun run. It will be working with Friends Groups to deliver another Love Parks campaign in 2020.

- Find out more**
- Friends of Battersea Park  
[friendsofbatterseapark.org](http://friendsofbatterseapark.org)
  - Friends of Christchurch Gardens  
[facebook.com/ChristchurchFriendsGroup](https://facebook.com/ChristchurchFriendsGroup)
  - Friends of Coronation Gardens  
[focoronationgardens.co.uk](http://focoronationgardens.co.uk)
  - Friends of Furzedown Rec  
[twitter.com/furzedownfofr](https://twitter.com/furzedownfofr)
  - Friends of Tooting Common  
[friendsoftootingcommon.uk](http://friendsoftootingcommon.uk)
  - Friends of Wandsworth Common  
[wandsworthcommon.org](http://wandsworthcommon.org)
  - Friends of Wandsworth Park  
[wandsworthpark.weebly.com](http://wandsworthpark.weebly.com)
  - Bramford Community Garden  
[ttwandsworth.wordpress.com/community-garden](http://ttwandsworth.wordpress.com/community-garden)
  - The Woodfield Project  
[thewoodfieldproject.org.uk](http://thewoodfieldproject.org.uk)



# Dancing the day away

More than 250 people danced the afternoon away at the Silver Sunday tea dance.

The event was completely free, with tea, coffee and cake to enjoy as well as music from the 40s, 50s and 60s played by local tea dance legend Mr Wonderful. The dance was Wandsworth's contribution to Silver Sunday – a national day in celebration of the over 60s.

Local residents Terry and Denise said it was a “great facility for the community that brought together so many different cultures in such a happy environment. The big smiles, all round, reflected the natural pleasure of everyone present, not only those that were ‘strutting their stuff’, but equally as important the wonderful collection of senior citizens who loved watching and listening to the great music which undoubtedly brought back lovely memories to them.”

According to Age UK, more than a million older people say they go for over a month without speaking to a friend, neighbour or family member.

Wandsworth Council has appointed Professor Rusi Jaspal to advise on how to tackle social isolation and encourage people to live more active and healthy lives. The Pro Vice-Chancellor (Research) at De Montfort University, who lives in Wandsworth, has now started work advising on how services can be strengthened across the borough.

Prof Jaspal said: “Combating loneliness and developing a sense of community among our residents is so important because we know that a sense of community means that people enjoy better mental health and better physical health outcomes. We also need to give people a sense of autonomy, resilience and independence to make the decisions that are really going to enhance their own wellbeing and the wellbeing of others in their communities.”

The Silver Sunday tea dance was also the venue for the launch of the Wandsworth Health and Care Plan - a joint plan by the council, local NHS and the voluntary sector to work together to improve the health of Wandsworth people, including better joined-up care for older people. Read it at [wandsworth.gov.uk/wandsworth-health-and-care-plan](http://wandsworth.gov.uk/wandsworth-health-and-care-plan)



Cllrs Melanie Hampton and Steffi Sutters enjoy a dance. The two cabinet members jointly hosted the event.







## Brighter Living

Around 250 residents went along to the Brighter Living Fair at the Wandsworth Civic Suite to find out about local services for people with care and support needs

Representatives of more than 50 local organisations ran stalls giving out information and advice and holding taster sessions in art, dance and more. The Baked Bean Company and the Tenovus Cancer Care choir entertained and there was food available all day in the free café.

If you were unable to come along to the event, find out about the support on offer from Wandsworth at [wandsworth.gov.uk/adultsocialcare](http://wandsworth.gov.uk/adultsocialcare)

## Support for carers

If you look after someone who needs support because of an illness or disability, you could be a carer.

Any carer has the right to an assessment to see if they are eligible for support from the council. A carer's assessment is simply a conversation that can help you understand the impact caring is having on your life and what help you may need, including financial concerns, your own health and practical help in the home.

Even if you are not eligible there are a range of services in the borough you can access free of charge. To find out more, contact the Wandsworth Carers Centre on (020) 8877 1200, [info@wandsworthcarers.org.uk](mailto:info@wandsworthcarers.org.uk) or visit [carerswandsworth.org.uk](http://carerswandsworth.org.uk)

## Help shape social care

Would you like to be involved in shaping the way adult social care services are provided in Wandsworth?

The council's looking for new members for its Coproduction and Partnership group. This meets quarterly with key people in the council's adult social care and public health department to discuss, support and provide feedback to officers in developing policies, strategies and services. The next meeting is on January 21 and will include opportunity to speak with Professor Rusi Jaspal who has been appointed by Wandsworth Council as an advisor to help tackle social isolation and loneliness.

If you would like to be involved or have any questions email Fiona at [acis@richmondandwandsworth.gov.uk](mailto:acis@richmondandwandsworth.gov.uk) or call 0208 871 7200.



Professor Rusi Jaspal advises the council on tackling social isolation and loneliness.

## Get involved with Healthwatch

People want health and care that works for them and Healthwatch's job is to help make this happen, but they need to hear from you to understand what matters.

If you have just a few minutes take one of their surveys or sign up to become a member for free and keep up to date with local health and social care. If you have more time become a volunteer and help gather views from local people to influence those who run services.

You can also invite Healthwatch to talk to your community group or go along to one of the regular Healthwatch Assemblies, where you can find out more about health and social care and give your views. Visit [healthwatchwandsworth.co.uk/get-involved](http://healthwatchwandsworth.co.uk/get-involved)

## Keeping warm

During spells of cold weather, the Wandsworth and Richmond Assessment Point (WRAP) offers a free one-stop support service for vulnerable residents offering advice on using heating systems efficiently, support to access discounts and grants, installation of free energy and water saving measures and referrals to local support services. To check if you are eligible, call 0800 118 2327. Get advice on keeping warm at [wandsworth.gov.uk/keeping-warm-in-winter](http://wandsworth.gov.uk/keeping-warm-in-winter)

Outreach workers will be keeping a close eye on rough sleepers and street drinkers during cold weather, but anyone concerned about a homeless person can contact Streetlink. Visit [streetlink.org.uk](http://streetlink.org.uk)

# Take control of your health in 2020

People in their 40s and older can access free council help to get healthier this year. Making better choices in mid life can help prevent conditions like diabetes, cancer, dementia or heart disease.

Go to the One You page on the council's website [wandsworth.gov.uk/oneyou](http://wandsworth.gov.uk/oneyou) for links to support and advice on how to eat better, get moving, manage stress and drink less.

You can also find out how to take a quick five-minute test on your health, and find out how to get a free health MOT with the NHS Health Checks scheme, visit [wandsworth.gov.uk/healthchecks](http://wandsworth.gov.uk/healthchecks)

One of the best things you can do to improve your health this year is to give up smoking.

People who use stop smoking aids and who get face-to-face support from their local stop smoking service are up to four times more likely to quit successfully.

## Yvonne's story

Yvonne Heath smoked 20 a day for 50 years before finally deciding to stop. She did a six-week course at the stop smoking clinic at St George's. She told Brightside: 'The care I got there was unbelievable and I couldn't have done it without their help. They took the time to talk to me, listened to me and encouraged me – they were brilliant. When I think of the effect smoking had on my health and the money I spent – I might as well have burnt it – I really regret it, but the beautiful ladies at St George's told me not to regret the past but to look forward.

'Smoking has an impact on all areas of your life, but I didn't even realise it at the time because I was walking around in a cloud of smoke. I feel so much better now and my grandchildren tell me how much fresher my house smells.'

Visit [wandsworth.gov.uk/stop-smoking](http://wandsworth.gov.uk/stop-smoking) to find out about free face-to-face help or call 0800 389 7921.



BECAUSE THERE'S ONLY  
**ONE YOU**

# Time to Quit!



“ The care I got there was unbelievable and I couldn't have done it without their help ”



# Know someone who smokes?

**There are nearly 1 million adult smokers who live in London, and many would like to kick the habit this year. Do you know one of them?**

Stop Smoking London helps people who are thinking about quitting find the best way for them - their website is a great place to start a quit journey.

Smokers tell us they are more motivated to quit when they feel encouraged by friends and loved ones, but they don't like to feel nagged! So here's something you can share with them to support them. Cut this out and give this to someone you care about:



## Share this!



**Stop Smoking London want to help more Londoners quit smoking in 2020. I'm sharing this with you because I know you'd like to quit this year.**

Visit the Stop Smoking London website and:

- See how much money you could save when you quit
- Learn more about your smoking "triggers" - the situations and feelings that make you reach for a cigarette - and how you can beat them
- Look at the various tools to help you overcome your nicotine cravings
- Find the latest advice on using e-cigs as an aid to quit smoking
- Find out what extra help may be offered by your local stop smoking support service
- Get motivated to find out what amazing things will happen for you when you quit smoking in 2020!

[www.stopsmokinglondon.com](http://www.stopsmokinglondon.com)



# Nnena's work on show

Wandsworth artist Nnena Kalu will have a major exhibition in Mayfair next year.

For the past 20 years Nnena has been supported by ActionSpace, a charity which helps artists with learning disabilities and works to make a professional career in the arts a

realistic option for talented individuals with disabilities.

It received funding from the council to support its work – part of a range of arts organisations the council helps to promote and fund. This includes other organisations that support artists with disabilities, such as Oily Cart which works with severely disabled young people, work in the borough's special schools and supporting disabled artists to take part in the annual Wandsworth Arts Fringe. Nnena, who has complex autism, a severe learning disability and is functionally non-verbal has built up a reputation as a prolific artist with a strong track record of exhibiting. Please see her full list of exhibitions here: [actionspace.org/artists/nnena-kalu/](http://actionspace.org/artists/nnena-kalu/)



Get your **FREE** NHS Health Check from your GP.

You must be aged 40-74, have not been previously diagnosed with diabetes, kidney disease, heart disease or stroke and have not had an NHS Health Check in the last five years.

For more information call the council's public health team on (020) 8871 5026, or visit [www.wandsworth.gov.uk/healthchecks](http://www.wandsworth.gov.uk/healthchecks)

**NHS HEALTH CHECK**

Helping you prevent  
 diabetes  
 heart disease  
 kidney disease  
 stroke & dementia





# Jobs for local people

The council's jobs brokerage Work Match has been working with Ram Quarter to find jobs for Wandsworth residents.

2020 looks set to be a key year for the Wandsworth town centre development with new restaurants and cafes, Sambrook's brewery, a nursery and the brewery heritage centre all set to open. "Our vision is to work with existing shopping areas, like Southside and Old York Road, not against them, by bringing in a different kind of offering and attracting people in the evenings and at weekends," said Chris Daly, deputy director of Ram Quarter owners Greenland.

"We're aiming for independent local businesses who know the area. So, for example, Story Coffee in St John's Hill will be opening a branch here. We could have had a chain, or a coffee shop based in north London, but we wanted a local business. It's the same with Sambrook's."

Wandsworth Work Match was set up by the council to help find jobs, traineeships and apprenticeships for local people looking for work, or who want to work in the borough closer to home. The aim is to ensure jobs created in regeneration areas, like Nine Elms and Wandsworth Town, go to Wandsworth residents. It helps match people up with jobs and will work with them on applications, CVs, interviews and pre-job training and support.

Just as importantly, it works closely with local businesses to help them fill vacancies. Businesses are urged to get in touch with its specialist recruitment team who will help them recruit for free. Visit [wandsworthworkmatch.org](http://wandsworthworkmatch.org).



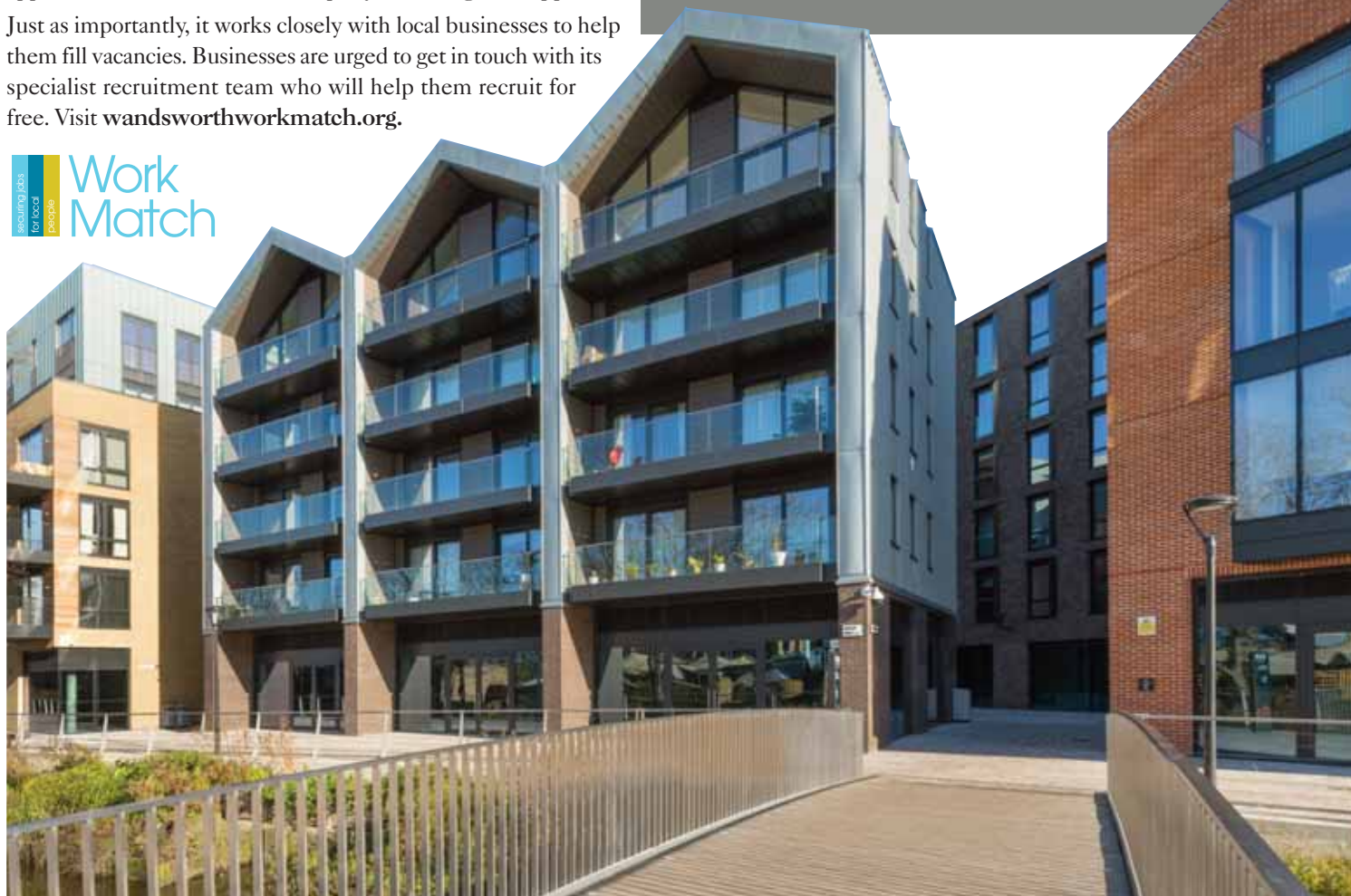
Asia had been looking for work for a while, but had found it difficult to find a job that had the right hours and pay and wasn't too far away from her home.

“ I visited one of their offices where I signed up quickly and easily. I told them more about my interests and my career background and they looked over my CV.

“They were able to tell me of available jobs straight away and very soon I was put forward for an interview with Backyard Cinema in Wandsworth's Ram Quarter. I'm now employed and thankful that I joined Work Match.”

securing jobs  
for local  
people

## Work Match



# Get involved in the arts

Creative Wandsworth is the borough's new Cultural Educational Partnership, bringing together different arts organisations to give local residents, especially young people, the opportunity to create art.

It's led by the council, with other key partners including Battersea Arts Centre and the Royal College of Art (RCA).

The RCA is midway through the construction of its new campus, due to open to students in 2021. Students and the public will be able to gather for talks, performances, screenings and exhibitions in a double-height hanger space and a walkway through the campus will be open to the public during the day, referencing the original Victorian street grid.

Alongside this, the RCA is continuing to develop its work creating opportunities for local people to engage in creative arts and design.



Photo: Shaun James Cox

Highlights in 2019 included work co-designing sculptures with students from Burntwood School, workshops with schools and youth clubs, free tours for residents, volunteer work with local community groups, co-creating a programme of film screenings, talks and exhibitions with the Battersea Society and offering bursaries to young artists as part of the council's Artists' Open House event.

In partnership with the council it also co-programmed StudioRCA – an exhibition space in Riverlight, Nine Elms, welcoming more than 1700 visitors to eight exhibitions.

Visit the RCA's Work-in-progress Show in Battersea between January 31 and February 2 (12pm–6pm) to see students from the School of Arts & Humanities present a selection of work in progress within their studios, workshops and seminar rooms. See the artists and designers of the future as their newest creations take shape.

In May the RCA will again be taking part in Wandsworth Arts Fringe hosting an exhibition in partnership with The Battersea Society as well as continuing to work with local schools. And it will again be offering bursaries to take part in Wandsworth Artists' Open House, with a group exhibition in the Dyson Gallery in October.

To find out how you can get involved with the RCA's work in the community, email [community@rca.ac.uk](mailto:community@rca.ac.uk)



Photo: Piers Allardice



# what's on?

EVENTS FOR JANUARY  
TO MARCH 2020



**From March 5**

## **SPINE 2020: Our World**

Wandsworth Libraries celebrate young people's power to change the future of our planet in a special arts festival this Spring. SPINE 2020: Our World, funded by arts organisation Apples and Snakes, will offer children from local schools the chance to get creative in an exciting, free programme of events.

The festival launches on World Book Day – Thursday 5 March – and runs for ten days at Balham Library. Children will meet and work with spoken word and visual artists and create a legacy artefact.

For updates follow @Batter\_Balham or @wandsworthlibs on twitter.

### **How to be listed**

Send details (including access for people with disabilities) by February 15, 2020 to: [whatson@enablelc.org](mailto:whatson@enablelc.org). We cannot guarantee that your entry will be inserted.

This is a free service. The information in this guide has been provided by the advertisers themselves. Wandsworth Council and Enable accept no responsibility for the accuracy of the information or for any event not organised by the council or Enable.

What's On is compiled by Enable Leisure and Culture, a registered charity.

**January 9, 7.45pm**

### **Guerilla Gardening**

A presentation by Nina Kowalska to spread the word about Southfields' Green the Grid, an initiative to make local streets visually greener, more friendly to wildlife, with improved air quality and helping to reduce flooding. Free, wheelchair accessible. Wandsworth Society.

West Side Church Hall (corner of Melody Road and Allfarthing Lane)

Contact [jennyafmassey@aol.com](mailto:jennyafmassey@aol.com)

**January 11**

### **Ultimate Beatles**

Tribute act at the Half Moon, Putney. [tickets.halfmoon.co.uk](http://tickets.halfmoon.co.uk)

**January 15-26, times vary**

### **The Actual Reality Arcade**

Try out a life-sized interactive zone for all ages, inspired by 10 classic arcade games such as Tetris walls and Pac-Man where you play for real. Former Royal Mail Delivery Office, Malthouse Rd, Nine Elms SW8 5BB [nineelmslondon.com](http://nineelmslondon.com)

**January 15-26, times vary**

### **Of All The People in the World**

During the Mayflower's 400-year anniversary, this art installation by Stan's Cafe offers a grain of truth about our world: every grain of rice represents someone, somewhere. Abstract statistics from the

US and UK are brought to life as the artists build mounds of rice. Former Royal Mail

Delivery Office, Malthouse Rd, Nine Elms SW8 5BB [nineelmslondon.com](http://nineelmslondon.com)



**January 17-19**

### **Little Red Riding Hood**

A modern take on the old favourite from Petite Pantos mixing social and political commentary, classic panto fun and musical theatre renditions of well-known songs. Suitable for all ages, but the matinee is most appropriate for young audience members. Tickets from £10.

Balham Bowls Club, Ramsden Road [balhambowlsclub.com/whats-on](http://balhambowlsclub.com/whats-on)

**enable**  
leisure & culture

# what's on?

EVENTS FOR JANUARY  
TO MARCH 2020



January 15-18

## American Nightmare

Intellectual thriller by Matthew Bulgo dissecting the battle lines that exist within the American Dream. Theatre503, 503 Battersea Park Road. Theatre503.com



February 2020

## MTFestUK

A celebration of new musical theatre from around the world, MTFestUK is back in 2020, this time at the new Turbine Theatre in Battersea. At the centre of the festival is a Taster Menu series of new musicals, each presented as a semi-staged sharing. Alongside the Taster Menu, the festival will also feature a selection of talks, performances and one-off events. [theturbine theatre.com](http://theturbine theatre.com)

WANDSWORTH CONSTRUCTION RECRUITMENT EVENT • JOBS AND TRAINING • FREE ENTRY

# CONSTRUCT WANDSWORTH 2020

Thursday 30 January  
1.30 - 4.30pm

Over 5000 jobs being created in Wandsworth.

Do you want to work on a construction site close to home?

We currently have lots of construction opportunities on development sites within Wandsworth and on the Nine Elms regeneration area.



January 30, 1.30pm-4.30pm

## Construct Wandsworth

Careers and recruitment fair for residents of Wandsworth and Lambeth from Wandsworth Work Match. Developers, contractors and partners currently operating throughout Wandsworth and the Nine Elms regeneration area will be available on the day promoting live opportunities including free construction-related training, live job vacancies, apprenticeship roles and information, advice & guidance. Free. South Thames College, Wandsworth High Street. [constructwandsworth2020.eventbrite.co.uk](http://constructwandsworth2020.eventbrite.co.uk)

## Keep learning

Wandsworth University of the Third Age (U3A) is seeking new members.

U3A is an international promoting learning for its own sake amongst older people. Wandsworth U3A has just under 400 members and includes 40 groups studying subject including the arts, sciences and history and there is a monthly general meeting with guest speakers. Anyone can join if they are retired or nearing retirement. [u3asites.org.uk/wandsworth/contact](http://u3asites.org.uk/wandsworth/contact)



The French Conversation Group

January 21-25, 7.45pm

## Tribes by Nina Raine

Billy is deaf, born into a hearing family who talk, and argue, a lot. When he meets Sylvia, she shows him how to use British Sign Language and he is part of a new tribe now. Billy's life is changing, but is anyone ready to see what he has to say? Putney Arts Theatre. [Putneyartstheatre.org.uk](http://Putneyartstheatre.org.uk)

January 30

## The Seasons Art Class

The Seasons Art Class Streatham, Balham and Tooting is running a new 14-week, part-time course at St Alban's Church Hall, Streatham. Three hours once a week, mornings or afternoons. Absolute beginners to improvers. Meet new friends, learn new skills. Open to adults of all ages. Call (020) 3561 0639.

From February 3

## Going Global

This spring the Battersea Arts Centre is throwing open its doors to pioneering international theatre makers, UK artists and communities exploring global themes. From





youth activism to the way digital technology is transforming lives, these innovative productions explore the urgent issues that impact us all. Visit the website for details of the productions on offer. [Bac.org.uk](http://Bac.org.uk)

**February 4, 6-8pm  
Wandsworth Diabetes Group**

Meet and share experiences. St Mary Magdalene Church Hall, 96 Wandsworth Common Northside. email: [Paul\\_dc15@yahoo.co.uk](mailto:Paul_dc15@yahoo.co.uk)

**Until Feb 9, 2pm-5pm  
Toy & Gift Swap Shop @ Optivo**

Do your children have any unwanted Christmas gifts or toys or books they haven't played with for a while, or never touched? Bring along up to five items in good condition your children have outgrown, get a token for every item you bring and

use a token to get an item someone else has brought along. John Morris House Community Centre. 164 St John's Hill, Battersea, London SW11 1SW.

**February 13, 8 - 9.30 pm.  
The Huguenots and Wandsworth**

A speaker from the Huguenot Society will talk about who the Huguenots were and why they came, their persecution, emigration and assimilation. Hear about the Huguenots that lived in Wandsworth, the skills they brought and the way that Wandsworth's heavily industrialised past is reflected in today's town. Free. West Side Church, Melody Road, London, SW18 2QQ. [wandsworthsociety.org/events](http://wandsworthsociety.org/events)

**Feb 19-22**

**Richard III**  
Shakespeare's tale of the king we love to hate performed by the Southside Players. Chestnut Grove Academy, Balham [Southsideplayers.co.uk](http://Southsideplayers.co.uk)

**March 6, 11am - 12.30pm.**

**Women's World Day of Prayer**

A global movement that celebrates prayer through an international service organised, arranged and led by women from around the world - this year prepared by the women of Zimbabwe. In 2020, the service will be held at Holy Trinity, Ponsonby Road, SW15 4LA with refreshments served afterwards. Free. Disabled access. For more information email: [admin@holymtrinity-roehampton.org](mailto:admin@holymtrinity-roehampton.org)

**March 3, 10, 17 and 24  
Bags of Taste Wandsworth cooking class**

These free classes help people learn how to save money on their food budgets by cooking delicious recipes that all cost less than £1 a portion. Southfields at St. Michael & All Angels Church [bagsoftaste.org](http://bagsoftaste.org)



**BREW**

This course is for women aged 50+ who want to start or grow their own business. BREW, run by Wandsworth Council's Lifelong Learning Team, stands for Building Enterprise and Resilience in Women and develops entrepreneurial and digital skills underpinned by coaching in resilience, confidence building and motivation. Places are fully-funded and free. For more information call (020) 8871 8055 or email [edlifelong@richmondandwandsworth.gov.uk](mailto:edlifelong@richmondandwandsworth.gov.uk)



**January 21-February 11, 9.15am-1pm**

**ReLaunch Workshops**

These workshops support women who want to return to work after a career break. The four-part course is held at the Battersea Arts Centre and gives women the opportunity to re-evaluate their strengths, build confidence, clarify professional goals and create an action plan, with the support of experienced ReLaunch coaches. For more information, email [relaunch@linkuplondon.org](mailto:relaunch@linkuplondon.org) or visit [linkuplondon.org/what-is-relaunch](http://linkuplondon.org/what-is-relaunch)



**Putney Music**

This society of classical music enthusiasts meets fortnightly at the Dryburgh Hall, Putney Leisure Centre. The 2019-20 season runs until April, and guests include David Nettle, Richard Markham, Carolyn Sampson, Ian Partridge, Nicola Benedetti, Lesley Garret, Chi-chi Nwanoku, Marc-Andre Hamelin, Brett Dean, Heather Betts, David Pickard (Director of the Proms), Oliver Soden, David Mellor, Stephen Walsh, Martin Neary, Andrew Keener and Peter Avis talking about their careers and experiences, interspersed with recorded musical excerpts. Annual fee is £35. Visit [putneymusic.org.uk](http://putneymusic.org.uk) or follow Putney Music on Facebook or twitter.

## Doing it online

Using our website helps keep your council tax bills low

### Report a waste problem

[wandsworth.gov.uk/waste](http://wandsworth.gov.uk/waste)

### Request a housing repair

[wandsworth.gov.uk/housingonline](http://wandsworth.gov.uk/housingonline)

### Search planning applications

[wandsworth.gov.uk/planningregister](http://wandsworth.gov.uk/planningregister)

### Report a street problem

[wandsworth.gov.uk/streets](http://wandsworth.gov.uk/streets)

### Apply for a school place

[eadmissions.org.uk](http://eadmissions.org.uk)

### Book an MOT

[wandsworth.gov.uk/MOT](http://wandsworth.gov.uk/MOT)

### Report noise and nuisances

[wandsworth.gov.uk/noise](http://wandsworth.gov.uk/noise)

### Apply or renew a parking permit

[wandsworth.gov.uk/parkingpermits](http://wandsworth.gov.uk/parkingpermits)

### Report graffiti for removal

[wandsworth.gov.uk/graffiti](http://wandsworth.gov.uk/graffiti)

### Report an abandoned vehicle

[wandsworth.gov.uk/abandonedvehicles](http://wandsworth.gov.uk/abandonedvehicles)

### Tell us if you are moving in or out of Wandsworth

[wandsworth.gov.uk/MIMO](http://wandsworth.gov.uk/MIMO)

### Enquire about your housing options

[wandsworth.gov.uk/housingoptions](http://wandsworth.gov.uk/housingoptions)

## Pay it online

It's now easier to pay online at [wandsworth.gov.uk/payments](http://wandsworth.gov.uk/payments)

### Pay your council tax

[wandsworth.gov.uk/paycounciltax](http://wandsworth.gov.uk/paycounciltax)

### Pay a parking fine

[wandsworth.gov.uk/parking/payment](http://wandsworth.gov.uk/parking/payment)

### Pay your rent

[wandsworth.gov.uk/rents](http://wandsworth.gov.uk/rents)

### Pay for a marriage or civil partnership ceremony

[wandsworth.gov.uk/ceremonypayment](http://wandsworth.gov.uk/ceremonypayment)

### Pay your business rates

[wandsworth.gov.uk/paybusinessrates](http://wandsworth.gov.uk/paybusinessrates)

### Pay a waste or littering penalty

[wandsworth.gov.uk/waste-enforcement](http://wandsworth.gov.uk/waste-enforcement)

## Talk to us online

weekly e-newsletter

[wandsworth.gov.uk/enews](http://wandsworth.gov.uk/enews)



[facebook.com/wandsworth.council](https://facebook.com/wandsworth.council)



[twitter.com/wandbc](https://twitter.com/wandbc)



[instagram.com/wandsworth\\_council](https://instagram.com/wandsworth_council)

## My Account

Create an account and you will only have to sign in once to access the main council services.

[wandsworth.gov.uk/myaccount](http://wandsworth.gov.uk/myaccount)

## Report It app



**Wandsworth Report It** makes it easier for anyone to report problems like flytipping, graffiti and other environmental issues. Search for the Wandsworth Report It app on the Apple, Android or Windows app store.

## Other contacts at the council

### Adult Social Services

(020) 8871 7707

### Births, Deaths, Marriages and Voting Hotline

(020) 8871 6120

### Early Years and Childcare Hotline including Family Information Service and After School and Holiday Play Centre bookings

(020) 8871 7899

### Environmental Services including noise, pest control, private housing and licensing

(020) 8871 6127

### Finance Hotline including benefits, council tax, rents and business rates

(020) 8871 8081

### Housing Hotline including housing management and repairs, service charges, home

### ownership, homelessness and housing advice

(020) 8871 6161

### Parking and Streets Hotline including concessionary travel, blue badges, MOTs, highways and skip licensing and bay suspensions

(020) 8871 8871

### Planning and Building Control hotline including Community Infrastructure Levy (CIL), land searches and street naming and numbering

(020) 8871 7620

### Schools and Admissions

(020) 8871 7316

### Waste Hotline including rubbish, recycling and litter

(020) 8871 8558



**New Year Special**  
£500 towards your new home\*

# Windsor Apartments

AT PRINCE OF WALES DRIVE



Windsor Apartments show home

Overlooking Battersea Park, Windsor Apartments is an impressive collection of one and two bedroom homes available for Shared Ownership.

Benefit from high quality finishes, spacious private balconies and all that this amazing city has to offer.

## A fresh start for the New Year

The number of first time buyers is at an all-time high\* and Wandsworth is one of the top-five boroughs for first-time home owners. Have you considered Shared Ownership as a route to finding your dream home?

### READY FOR OCCUPATION

Ten homes in Huntington House at Prince of Wales Drive are now ready to occupy. A further 22 apartments are launching soon in Regents House.

## Eligibility



Shared ownership at Windsor Apartments is only available to people living or working in the Borough of Wandsworth.

Applicants must register with Wandsworth Borough Council. Please visit:  
→ [WindsorApartments-SW11.co.uk/contact-us](https://WindsorApartments-SW11.co.uk/contact-us)

\*Homes&Property 15th Oct, 2019

\*The sum of £500 will be deducted, on completion, for a reservation that exchanges within 28 days of the Memorandum of Sale (MOS) being issued. Terms & Conditions apply. Speak to Clarion Housing's sales agent for details.

Call 0300 100 0309

Visit [WindsorApartments-SW11.co.uk](https://WindsorApartments-SW11.co.uk)

[shared.ownership@myclarionhousing.com](mailto:shared.ownership@myclarionhousing.com)  
[myclarionhousing.com/sharedownership](https://myclarionhousing.com/sharedownership)



**CLARION**  
HOUSING



**It really does**

**get recycled!**

**Everything you put out for recycling gets recycled.**

Cans are recycled into parts for cars, bikes, planes or anything else made from steel or aluminium including new cans.

But, to do this, we need the right things put in the right bins.

Putting the right stuff in the right recycling bag or bin is important, it means your recyclable items have an opportunity to become something new.

Let's all work together and get recycling right.

**Find out more at:**  
[wandsworth.gov.uk/recycling](http://wandsworth.gov.uk/recycling)