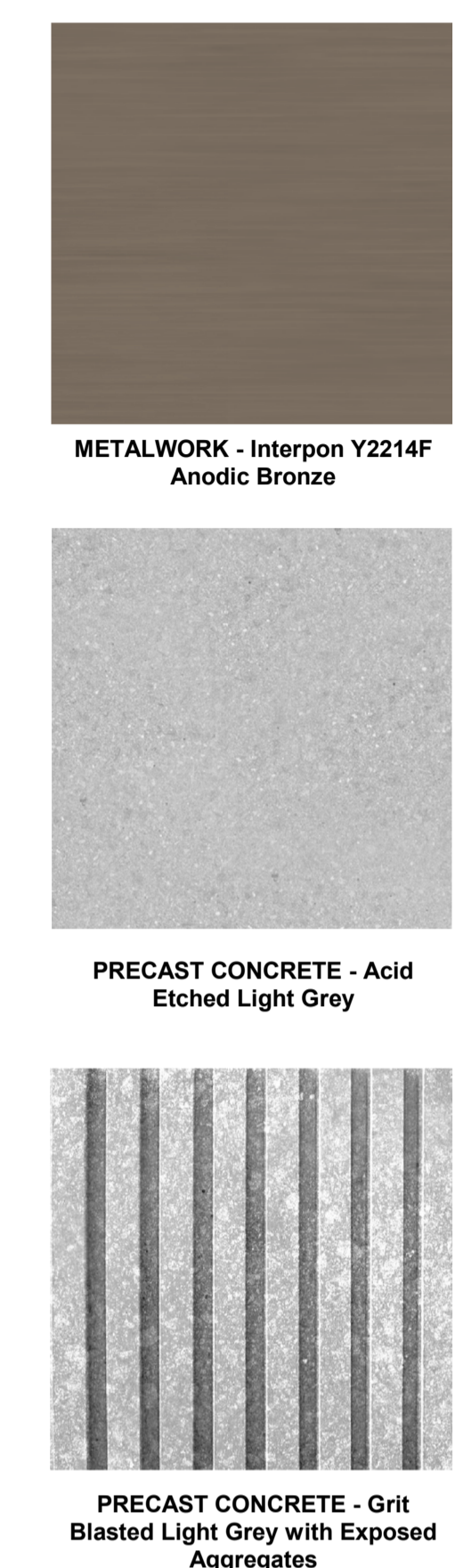
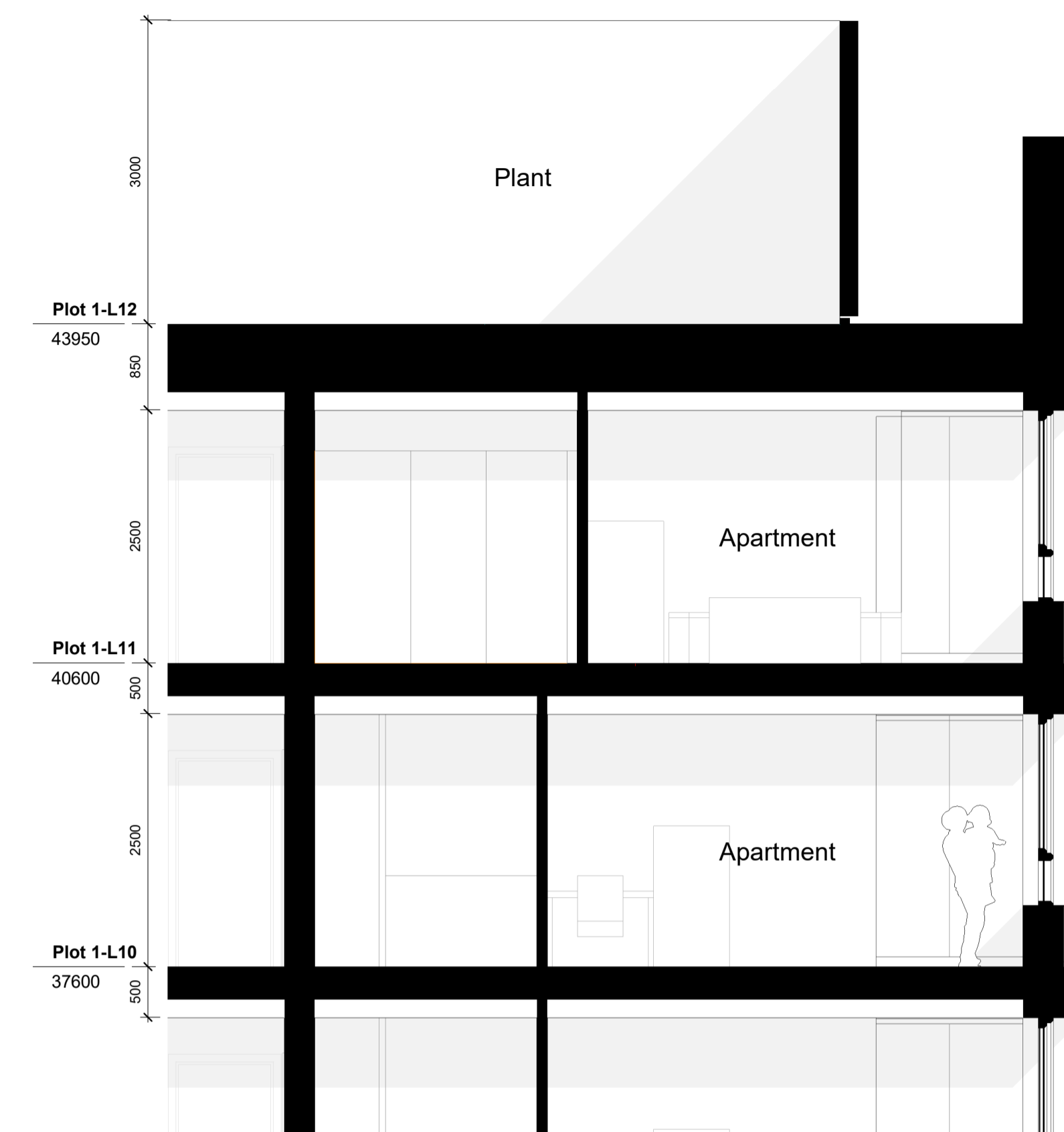


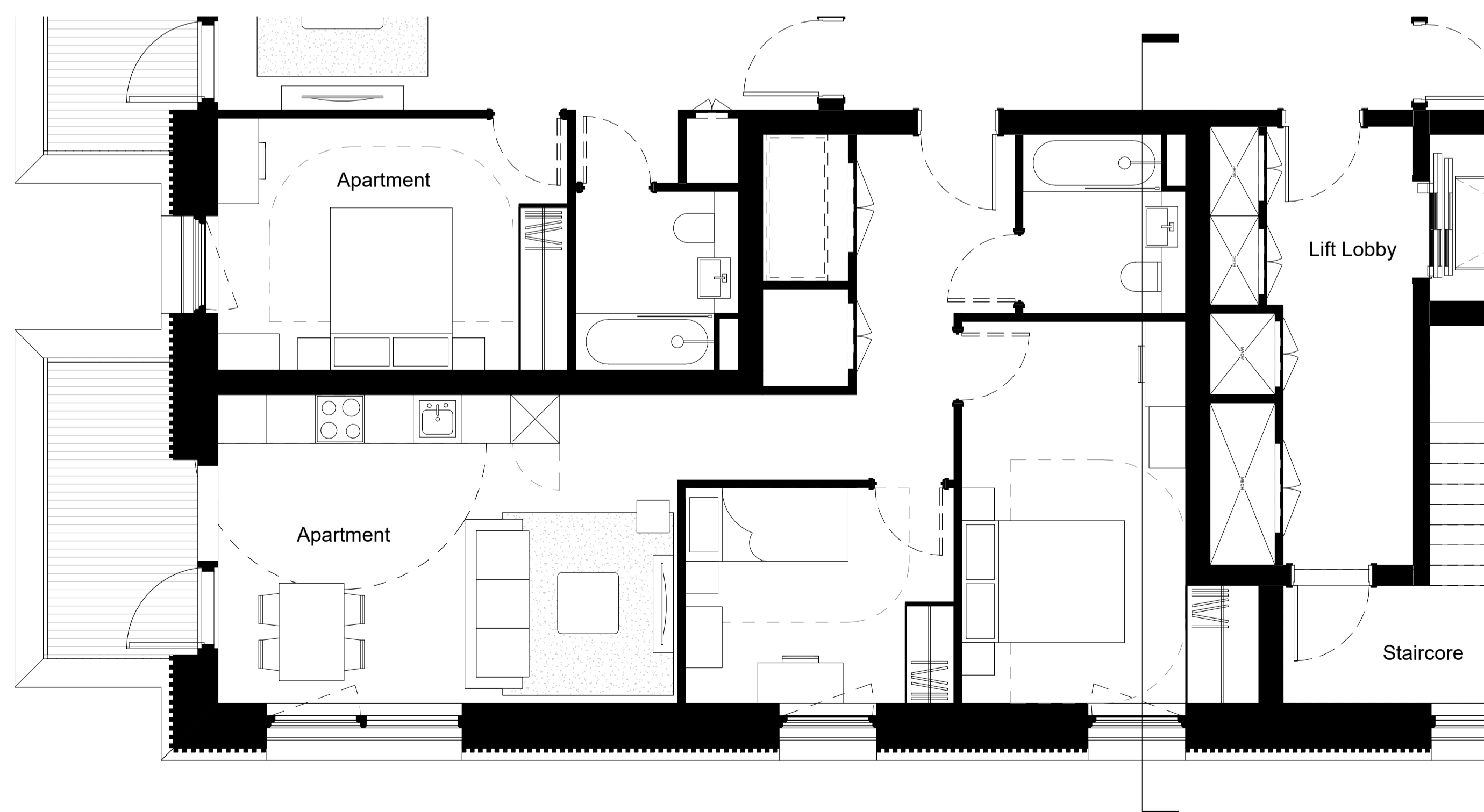
Dimensions are not to be scaled from on this document. Notify Howells of discrepancies affecting the information shown. This drawing is copyright of Howells, the trading name of Glenn Howells Architects Limited.



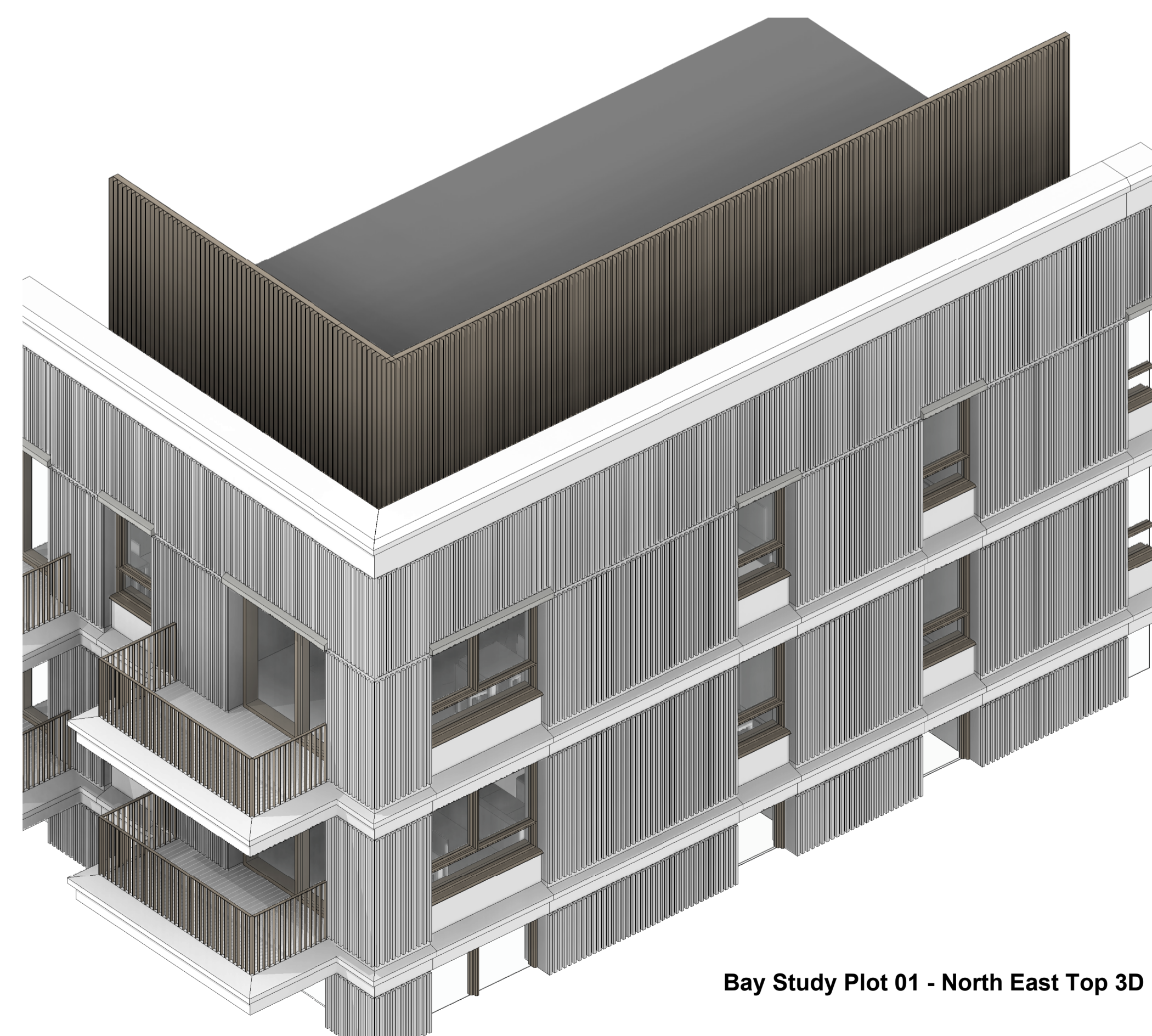
- MATERIAL KEY**
- 01 Light Grey Grit Blasted Precast Concrete Panel with 50x50mm Ribbed Vertical Texture
 - 02 Light Grey Grit Blasted Precast Concrete Panel with 100 x 100mm Vertical Texture
 - 03 Light Grey Horizontal Acid Etched Precast Concrete Band
 - 04 Light Grey Acid Etched Precast Concrete Upstand & Cill
 - 05 Bronze Coloured Aluminium Frame Window
 - 06 Outward Opening Glass Door with Side Panel in Bronze Coloured Aluminium Frame
 - 07 Main Entrance Glass Door in Bronze Coloured Aluminium Frame with Integrated Signage Zone
 - 08 Bronze Coloured Aluminium Louvre Door
 - 09 Inset Balcony with Bronze PPC Finish to Steel Flats Balustrade
 - 10 Projecting Balcony with Acid Etched Precast Concrete Profile & Bronze PPC Finish to Steel Flats Balustrade
 - 11 Commercial Unit Window in Bronze Aluminium Frame with Integrated Louvre and Signage Zone
 - 12 Bronze Coloured Aluminium Plant Screen with 50x50mm Vertical Texture
 - 13 Polished Grey Precast Concrete Base Plinth

Bay Study Plot 01 - North East Top Elevation
1:50

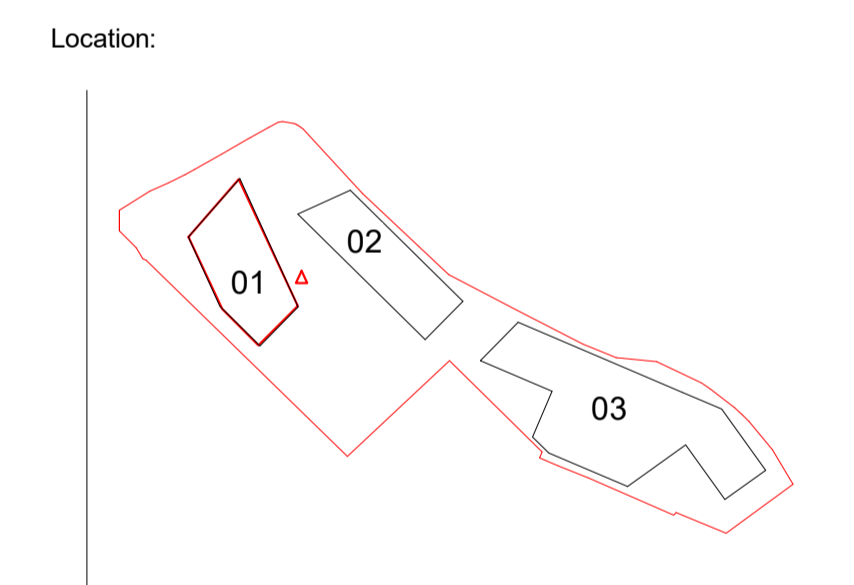
Bay Study Plot 1 - North East Top Section
1:50



Bay Study Plot 01 - North East Level 10 Plan
1:50



Bay Study Plot 01 - North East Top 3D



Location:

Status:
PLANNING

Revision History: Checked: RK

P01 Issued for Planning	29/04/2022	JA
P02 Issued for Planning	18/04/2023	SI

Project & Client:
41-59 Battersea Park Road working with Watkin Jones

File Title: Scale: As indicated @A1
Plot 01 - Bay Study (Sheet 2 of 2)

File ID: Revision:
2278-GHA-01-ZZ-DR-A-21101 P02