

Brightside



New flightpaths threat

See page 4

Tooting bangs the drum

See page 12-13

Owning your first home

See page 20-21



Don't have a doctor?

Don't worry. Call 111 for expert medical advice.



**CALL
111**

Phone 111 before you leave home!

There are doctors available in Wandsworth,
evenings, weekends and bank holidays.

**Visit www.wandsworthccg.nhs.uk/urgent
for more information.**



@NHSWandsworth



NHSWandsworthCCG

Inside

October 2015

news

New flightpaths threat	4
Good news for cyclists	6
Tooting on the fast track	12-13
Community food growing awards	14
Wandsworth Gets Results annual report	16-17
Estate regeneration	18
Owning your first home	20-21
Helping people into work	23
50 years of the mobile library service.	26

regulars

What's On	27
Useful numbers	31

Cover: Outside Arts in Tooting, see pages 12-13.



To obtain a copy of Brightside in large print or audio version please telephone (020) 8871 7266 or email brightside@wandsworth.gov.uk

YOUR BRIGHTSIDE

Your Brightside is distributed by London Letterbox Marketing. We expect all copies of Brightside to be delivered to every home in the borough and pushed fully through the letterbox. This issue of Brightside is being delivered from **September 7 to September 11**.

Your next Brightside will be delivered in **November**.

If you don't receive your copy call us on (020) 8871 7520. Brightside is the civic magazine of Wandsworth Council.

It is produced by the council's corporate communications unit. It is the only publication delivered to every household in the borough.

We would like to thank all our advertisers for their support. Brightside will consider display advertisements from non-council bodies (excluding recruitment) and reserves the right to decline advertisements.

The council neither accepts responsibility for the content of nor endorses any non-council advertisements.

- Editorial (020) 8871 8902
- Advertising (020) 8871 7266

If you have a comment about the magazine please telephone: (020) 8871 8902/6173 or email: brightside@wandsworth.gov.uk.

Brightside is printed on environmentally friendly paper, please recycle.

Protecting pubs

The council is on course to give an extra layer of protection to more than 100 local pubs in recognition of their historic, architectural or community value.

Town hall planners are now preparing to publish 'Article 4 Directions' to cover a total of 121 pubs which, if finally confirmed, means owners would need to apply for permission before knocking them down or changing them into something else like a supermarket or estate agent. Wandsworth is set to be the first council in the country to protect its local pub network on this scale.

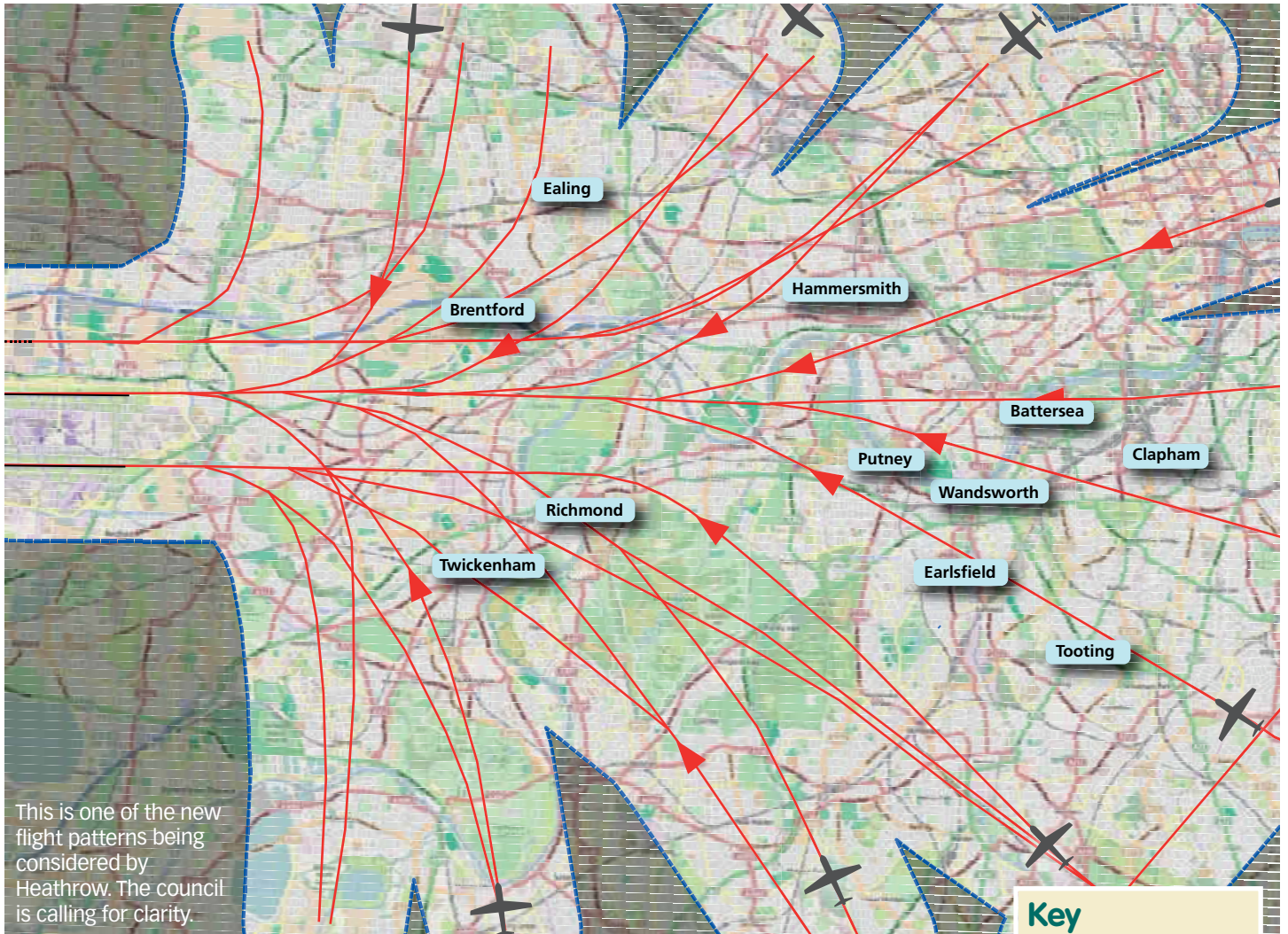
Pubs in line for this extra layer of protection include The Alma, The Ship and The Cat's Back in Wandsworth, The Bricklayers Arms, Arab Boy and Railway in Putney, The Beehive in Battersea, The Trafalgar Arms, The Wheatsheaf and The Selkirk in Tooting and The Grove and The Regent in Balham.

Pub owners have been informed about the proposed change to their planning rights and they now have a chance to respond. The extra protection could come into force in September 2016.

Deputy council leader Cllr Jonathan Cook, said: "Wandsworth residents love their pubs but sadly we've lost some popular, thriving locals in recent years. Frustratingly the council has not had the real powers needed to stop this from happening.

"We've set out to change that and with the help of CAMRA and many local residents we're now close to achieving our goal. Our pubs are vital community assets and our planning system should recognise their special value and significance."

New flightpaths threat



Council leader Ravi Govindia updates residents on the airport expansion debate:

“The UK Airports Commission has published its final report which recommends that Heathrow is given permission to build a new runway. The council wants to make sure Wandsworth residents understand how this project could affect them before the Government makes the final decision.

Heathrow’s proposal involves building a third runway and creating a series of new flightpaths which fan out across London. They include low flying arrival routes over parts of Wandsworth which have never been affected by aircraft noise before. We can’t tell you with certainty where the planes will fly as this vital information is being withheld. Instead only indicative routes (pictured above) have been published which show flights coming in over Roehampton, Putney, Earlsfield,

Battersea, Wandsworth Town, Wandsworth Common and Tooting.

We do know that noise impacts will be compounded by the withdrawal of the half-day break from flights which is not part of the proposed three runway operation. We also know that the airport and the airlines are reluctant to ban night flights so we have to expect planes will continue to land from 4.30am each morning if the expansion plan goes ahead.

It’s deeply frustrating that we cannot provide you with a more accurate picture of how Wandsworth will be affected by a three runway Heathrow. The Airports Commission has been studying the plan for more than two years but failed to pin down the critical issues of flightpaths and flight patterns.

The council is calling on the Government to reject the commission’s deeply biased assessment and to insist that detailed flightpaths are published before a decision is made on which airport to expand.”

To join our campaign sign up at www.wandsworth.gov.uk/aviation

Key

- Area potentially affected by aircraft noise
- Area not affected by noise
- Flight paths

A small circular inset map showing a portion of the main map. It highlights a blue dashed area for 'Area potentially affected by aircraft noise' and a solid blue area for 'Area not affected by noise'. A red arrow points to a flight path.

Festival fun



People in Roehampton and Battersea were treated to the SW11 and the Feel Good festivals this summer.

The council partnered with Big Local SW11 and Regenerate to deliver the festivals featuring family activities including a smoothie bike, food stalls, face painting, sports and dance taster sessions, live performances and music, plus health advice and information on what's happening locally.

See page 18 for more information about estate regeneration in both areas.



Honouring unsung heroes

WANDSWORTH
CIVIC AWARDS

Do you know an unsung local hero? You could nominate them for a 2015 Wandsworth Civic Award.

The awards are run by the Mayor of Wandsworth as a way of saying thank you to local people who have volunteered their services over a long period of time to help others, including charity workers, community activists or just someone who acts as a helping hand to friends or neighbours - anyone whose tireless work has made a difference to the area.

How to nominate

Your nomination must include the nominee's name, phone number and email address, plus your name and contact details, and details of why they deserve an award. Deadline for entries is October 10.

- Complete our online form
- Email pbattista@wandsworth.gov.uk.
- Send your entries by post to Wandsworth Civic Awards, Room 144, Wandsworth Town Hall, Wandsworth High Street, London SW18 2PU

Finalists chosen from the nominations will be invited to attend a special award ceremony at the town hall in November.

For more information visit www.wandsworth.gov.uk/civicawards.

Hurry
nominations close on
October 10

AQUAMAX
services.com

Where performance counts

Bathroom Specialists, with over 23 years' experience, we have BRONZE, SILVER or GOLD Installations providing full bathroom renovation. Contact us now for a free quotation.

M. 07946 420 055
T/F. 020 8788 8063
E. info@aquamaxservices.com
W. www.aquamaxservices.com



www.thameschristiancollege.org.uk

thames
Christian College

For full list of open mornings, enrolment and fee details contact 020 7228 3933
Thames Christian College,
Wye Street, London SW11 2HB.

Five minutes' walk from Clapham Junction.

Smaller school.
Bigger opportunities.
Personal attention. Great results. Affordable.
Scholarships available

OPEN MORNING
SATURDAY 3rd OCTOBER
10.00-13.00

Good news for cyclists

There's loads going on in the brighter borough to make cycling easier and safer

A new draft cycling strategy has been published, which proposes 22 targets for action, including

- A review of the borough cycle route network
- Improving the amount, type and location of cycle parking
- Free cycle training
- Working with the police and others to improve road user behaviour
- Reducing conflict between cyclists and HGVs

There is still time to comment on the draft plan. Visit www.wandsworth.gov.uk/cycling

A new cycle-friendly roundabout is now in use at Queens Circus in north Battersea.

This includes segregated lanes and separate traffic signals which keep cyclists apart from the main traffic flow at busy exits. Vehicles turning left to exit the roundabout are held while bikes are allowed to continue straight-on, reducing the danger of a collision.

Wandsworth Council and Transport for London have worked together on the project which is thought to be the first of its kind in London.



Wandsworth Council is running a design competition for a new pedestrian and cycle bridge to span the Thames between Nine Elms and Pimlico.

This is thought to be the first bridge in the centre of a major world city designed around the needs of cyclists and pedestrians. The images show the final four proposals, with the winner due to be announced later this year.

Find out more at www.nepbridgecompetition.co.uk.



Ove Arup & Partners Ltd with AL_A, Gross Max, Equals Consulting and Movement Strategies

Another eleven 20mph zones have been introduced across the borough to improve safety for cyclists and pedestrians.

Councillors approved the zones after they were given the thumbs up by local people. Large areas of Wandsworth will be covered, including the Toastrack, the Southfields Grid, much of Nightingale Ward and the whole of Thamesfield Ward.



Buro Happold Ltd with Marks Barfield Architects, J&L Gibbons Landscape Architects, Gardiner and Theobald



Ove Arup & Partners Ltd with Hopkins Architects and Grant Associates



Bystrup Architecture Design and Engineering with Robin Snell & Partners, Sven Ole Hansen ApS, Aarsleff and AF Lighting



Park is one of capital's best



Battersea Park has successfully retained its coveted Green Flag award.

Described as “the jewel in the crown of London's parks”, the award from leading environmental charity Keep Britain Tidy recognises and rewards the best parks and green spaces across the country.

A Green Flag is a sign to visitors that Battersea Park “boasts the highest possible standards, is beautifully maintained and has excellent facilities”.

The awards are judged by open space experts, who volunteer their time to assess candidates against eight strict criteria, including horticultural standards, cleanliness, sustainability and community involvement.

Battersea Park's numerous attractions include a boating lake, sports courts, an Olympic-quality running track, bike hire, a popular children's zoo, lakeside restaurant, Victorian bandstand, tennis courts, all-weather floodlit sports pitches and an impressive peace pagoda - a unique London landmark complete with gold-coloured Buddhas overlooking the River Thames.

▶▶ **For more information about the park and its attractions visit www.wandsworth.gov.uk/batterseapark**



Reflecting the Wandle

Amateur photographers are invited to enter a competition to capture an aspect of the River Wandle. The winning images will be used on the new Wandsworth Valley Regional Park website.

There are four categories: Natural Wandle, Urban Wandle, Wandle Folk and Working Wandle. The closing date is October 16. Find out more at www.wandlephoto.com

Health volunteers needed

Health watchdog Healthwatch Wandsworth needs volunteers for its visiting services. Part of its job is to visit publicly-funded health and social care services premises and report its findings to service providers and commissioners.

If you have a background in health or social care and are organised, good with people, able to take clear and coherent notes and can travel within the borough email enquiries@healthwatchwandsworth.co.uk for an application pack, or call 020 8516 7767 for more information.

Design prize

Local people and community groups are being asked to nominate their favourite new buildings for the Wandsworth Design Awards.

Nominations can be made for all types of development, including access for people with disabilities, residential extensions, restoration or conversion projects, new or restored offices and shopfronts, new buildings, public spaces, landscape projects and sustainability.

Visit www.wandsworth.gov.uk/designawards. Deadline for entries is September 30.

By Your Side

A new woman's charity is being launched in Balham.

By Your Side will be working with the charities Ella's Home, Mazi Mas and Young Women's Trust to give women the tools they need to tackle issues such as domestic abuse, self esteem issues and the glass ceiling.

By Your Side is launched on Saturday September 19 at 7pm at Balham Baptist Church (21 Ramsden Road, Balham, London, SW12 8QX). The event is free and light refreshments will be provided. Read more at www.primetimepr.co.uk/byourside



Staff sharing plan moves forward

The creation of a single staff structure for Wandsworth and Richmond councils continues to progress smoothly.

The two councils have agreed a new smaller and leaner senior management team that will be jointly employed by both councils and managed by a single chief executive. This 30 per cent reduction in senior management is expected to deliver savings of around £1.5m a year.

The creation of a single workforce will give greater opportunities for reducing overheads, save back office costs and lead to better deals from suppliers. When it is fully operational from April 2017 it is expected to save taxpayers in each of the two boroughs up to £10m a year.

Both councils will continue to be separate sovereign bodies with their own elected councillors, cabinets and leaders. They will each maintain their own distinct identities and retain the ability to develop policies and priorities that matter to their residents and businesses.

The Leader of Wandsworth Council, Ravi Govindia, said: "The fact that we're delivering so much with Richmond in such a short period of time is testament to the strong relationship we've developed. It paves the way for us to continue protecting and delivering the important frontline services that our residents rely on by cutting back office costs, reducing overheads and saving public money."

Staff mutuals start work

Two new staff mutuals will be taking over the running of some town hall services from October 1.

More than 100 directly employed town hall staff along with more than 200 part-time and seasonal staff will form the new staff mutual Enable Leisure and Culture, taking over day-to-day responsibility for services like Putney School of Art, the Tooting Bec Common athletics track, the annual fireworks display in Battersea Park, the arts service, the events and filming team and the leisure and sport team. The company is applying for charitable status.

Meanwhile the council's Adult Learning Disability Day Service is becoming an independent charity called One Trust. Nearly 100 staff based at five locations round the borough will transfer across to the new staff mutual.

It promises a more responsive, flexible service while delivering savings to council-tax payers. Extra services are planned by One Trust, including weekend and evening respite for adults with learning disabilities and their carers.

The staff mutual model sees staff take over the management of services and run them in a leaner, more efficient and innovative way. Both contracts will last for four years.



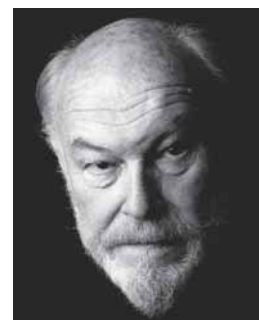
Get away

As part of its council-funded summer programme of free summer trips for Wandsworth's older residents, Wandsworth Community Transport is offering a free introductory outing for any local pensioner who has not already been on one of the trips this year.

Call (020) 8675 7460 for more details.

Remembering the war

Actor Timothy West will be one of the people taking part in an evening of words and music at the Civic Suite in November commemorating Wandsworth's involvement in World War One.



The Woods Cry Out will be presented by Putney Music in aid of the SSAFA which helps members of the armed forces, veterans and their families. Tickets are £12, and £7.50 for people aged 18 and under. Visit <http://tara-arts.com/touring> or call (020) 8333 4457.

Riverbus boost for Battersea

A brand new Thames riverbus passenger pier has been built at Plantation Wharf, north Battersea.

Thames Clippers services are expected to start stopping here in the coming weeks, providing more Battersea residents with a new route into central London. New boats are also being brought into service to increase overall capacity on the Putney to Blackfriars route. The council approved plans for the new pier back in 2012. Find out more at www.tfl.gov.uk/river



MAKE THE RIVERSIDE YOUR HOME



BATTERSEA REACH

PHASE 4 LAUNCHING SEPTEMBER 2015

1 & 2 BEDROOM SHARED
OWNERSHIP APARTMENTS

PRICES FROM
£108,750*
FOR A
25% SHARE

LIMITED SPACES - REGISTER NOW

020 3740 4659

WWW.NHHG.ORG.UK/BR

*Prices correct at time of going to print and subject to availability. Eligibility criteria applies. Speak to a member of the sales team for further details. Priority for a Shared Ownership home at Battersea Reach will be given to first time buyers who live or work in the borough of Wandsworth. You will also need to be registered with Wandsworth council's Home Ownership Team - 020 8871 6016. Computer generated image of Trafalgar House, indicative only.



SUPPORTED BY
MAYOR OF LONDON



Pub must be rebuilt

A developer who demolished a Victorian public house in Battersea without permission will be required to rebuild it brick by brick.

The Alchemist pub in St John's Hill was built in 1854 and was originally known as the Fishmongers' Arms. The developer took down the building without planning permission. He had not sought any consent to do this even though he was required to do so under planning rules because the building was located in a conservation area.

The council responded to this unlawful demolition by launching enforcement action. A subsequent attempt to obtaining retrospective permission has been rejected.

The developer will now be required to start work on rebuilding the pub and restoring it to its original condition.

See page 3 for other ways the council is protecting the borough's pubs.



Wandsworth's first compact starter homes approved

The council has approved plans for 63 compact starter homes which will be built on Mapleton Road in Wandsworth Town centre.

The new development is by innovative home builder Pocket. It will offer intelligently designed flats which make the best use of space, including floor-to-ceiling windows, under floor heating and built-in storage. Priority will go to local Wandsworth residents who can't afford to buy on the open market.

Council planning chairman Sarah McDermott said: "This will be the first development of this type in Wandsworth and we want more to follow. The new homes will be sold at 20 per cent below the market value and in some cases the discount will be even higher. I'm sure they will be a popular choice with local first-time-buyers."

►► Find out more at www.pocketliving.com. Find out how to register for affordable housing options on pages 20-21.

How do you stay active?

The council is keen to find out how its residents aged 55 and over stay active.

Whether it's gardening, taking a leisure walk, joining a keep fit class or just doing the housework, the council wants to know what staying active means to you, the type of activities you would like available locally and any barriers that make it difficult for you to stay active. Take the survey online at www.wandsworth.gov.uk/stayingactive, or, if you would like a paper form, call 07590 598 816 or email rob@pressred.co.uk.

Help care

The Wandsworth Carers Centre is searching for volunteers to help people who have health conditions, Alzheimer's, a learning disability or mental health condition.

Volunteers would keep the person company and see to their needs so that their carer can have a break. You would need to help on a regular basis, support the person with activities they enjoy, such as board games, going out for a walk or shopping, and prompt them to eat or drink as necessary.

You will receive full training and expenses and gain experience in social care. Call (020) 8675 0811 or 020 8877 1200, email philippa@wandsworthcarers.org.uk or visit www.wandsworthcarers.org.uk.

WANDSWORTH LEISURE CENTRES REDEVELOPMENTS



Wandsworth's Leisure Centres have benefited from £3.5 million of refurbishments works since the start of 2015. Balham, Latchmere and Tooting Leisure Centre are now completed with Putney Leisure Centre and Wandle Recreation Centre due to be finished in September 2015. The centres are owned by the council and managed by Places for People. We took a closer look at 3 of these centres.



Balham Leisure Centre

From January to June 2015 Balham Leisure Centre underwent a transformation. This Grade 2 listed building celebrated its 100th birthday in 2014, therefore restoring its character and charm was always part of the plan.

The swimming pool surround was retiled and new poolside sauna and steam cabins were built. A brand new dance studio was built along with two new treatment and therapy rooms. The existing dance studio was extended and the gym gained the latest fitness equipment. All the centres changing rooms were completely redeveloped and all finished to a high specification.

 "@BalhamLC Great swim in refurbished pool #ILoveSW #LoveBalham"

 "The best leisure centre I have ever been to. Friendly and family feel certainly adds to why I have been a member for many many years. Recently refurbished studio room is fantastic."



Latchmere Leisure Centre

Latchmere Leisure Centre's great beach effect leisure pool opened to the public this Easter complete with a brand new changing village. As well as a complete refurbishment, the space has been reorganised to include additional group changing rooms and poolside screens to improve bather comfort. In short the whole changing experience at Latchmere has been improved tremendously.

The gym was extended and gained the latest cardiovascular equipment along with a great range of strength and functional training equipment. Latchmere also introduced a state-of-the-art fingerprint entry system for gym users to gain quick and easy access on each visit.

Lastly the male and female sports changing rooms received a complete refurbishment, as well as refurbishments to communal areas and circulation corridors.

 "Great morning swim at refurbished @latchmerelc #thisgirlcan"

 "Loving the new changing rooms!"

Tooting Leisure Centre

Refurbishments at Tooting Leisure Centre began in the gym during December 2014. The gym benefited from new flooring and redecorations as well as new strength and functional training equipment. The indoor cycling studio received a makeover and new treatment rooms and office spaces were built. During the first half of 2015 the changing village and the male and female sports changing rooms were completely redeveloped. The transformation was complete when new steam and sauna cabins were added to the poolside.

 "Loving the new steam and sauna at @tootinglc, a very welcome addition"

 "Liking the refurb of the gym @tootinglc! More kit & more workout space! #tooting"



Balham: 020 8772 9577 • Latchmere: 020 7207 8004 • Tooting: 020 8333 7555

www.placesforpeopleleisure.org

**Gym • Swimming classes • Kids activities
Courts • Halls • 3G pitches**



Tooting bangs on the drum

Tooting is buzzing with anticipation this month as major transport upgrades draw closer and a new wave of arts events and foodie festivals add more spice to the town centre.

Here are just some of the highlights in store for this fast up-and-coming part of the borough:

Foodies paradise

Tooting is full of even more flavour after new eateries joined the town centre's famous culinary scene. Look out for

Kaspa's Desserts at 250 Upper Tooting Road,

Mud café at 141 Mitcham Road

Tangia kitchen and bar at 108 Mitcham Road

The Little Taperia at 143 Tooting High Street and

The Coffee Company of Tooting at 4 Tooting High Street

Pedestrian makeover

The busy junction outside Tooting Broadway Station is set for a pedestrian-friendly transformation.

Transport for London and the council will be commissioning specialist transport and urban planning consultants to prepare some designs which will be presented to local people later this year.



CrossRail 2

Looking much further ahead, Tooting Broadway is on the 'safeguarded route' for the CrossRail 2 tube line. This proposed new underground route could be built by 2030 and would run north into central London via Clapham Junction.

Foodie festivals

The all new outdoor Tootopia food festival takes place September 25 -27 and will see the town centre's award winning eateries take to the streets to showcase their delicious offerings. Food lovers should also look out for Foodival on September 12 – a celebration of home grown food at the Samaj Hall.

Pub life

The council took action to protect town centre pubs from the threat of redevelopment – see page 3.

In addition, the newly-refurbished Kings Head and Trafalgar Arms now offer Tooting's beer lovers even greater choice.



Staff at the Kings Head

Night Tubes

Night tubes will soon start running on the Northern line. This means trains will run into the early hours of Saturday and Sunday morning.

This is great news for local people trying to get home late and will be a major boost for the areas superb night-time economy.



Outside arts

A new two year arts programme – titled The Streets – kicked off in late July with Australian percussion star Ben Walsh performing on the roof of Tooting Broadway Station.

It was the first of many exciting outdoor arts events coming to the town centre. Check www.thestreets.london for updates.

Keep up to date with Tooting news at wandsworth.gov.uk/tooting or follow @tootingtown

Recycle your way to £5k

Look out for your 'golden tickets' coming through your door soon – they could help you win £5,000.

Wandsworth people who recycle properly can enter a prize draw for a cash prize, plus the chance to nominate a community group to receive a £2,500 reward for their recycling efforts*.

The Western Riverside Waste Authority (WRWA) processes the waste and recycling for four London boroughs, including Wandsworth, at Smugglers Way. It has been awarded a government grant to give people a bit of extra motivation to recycle correctly. Wandsworth has welcomed the Golden Ticket prize draw, because every extra item recycled saves council tax payers' money.

You'll get a book of golden tickets through your door in the next few days. Just put your contact details on one of the tickets and pop it in with your clean and dry recyclables in a clear recycling sack or orange-lidded recycling bank. You can pick up extra tickets at your local library, leisure centre or the town hall.

Tickets found by staff at the Smugglers Way recycling plant will be put into a prize draw. The first draw is on October 30, with three further draws in December, February and March.

* Terms and conditions apply. To be eligible for nomination, community groups must register in advance and confirm that they encourage their members, supporters and/or other local residents to recycle correctly.

▶▶ Visit www.wrwa.gov.uk/goldenticket or call (020) 8871 2788 for full details, terms and conditions, to register community groups and for details on how to recycle correctly.

Visit [wrwa.gov.uk](http://www.wrwa.gov.uk)

WIN
£5,000

RECYCLE RIGHT
GOLDEN TICKET

in the
Golden Ticket
Recycling Prize Draw

Awards for community food growers

People who grow and cook food to benefit their community are invited to enter the inaugural Mayor of Wandsworth's Grow Wandsworth Awards.



The awards have been set up by the mayor, Nicola Nardelli, to recognise projects that bring people together to produce healthy, fresh, local food. They are open to individuals and to community groups.

"I believe it's important to realise the connection between growing and cooking, and that growing food for yourself and your community can be simple, fun and enormously rewarding. You don't necessarily need a lot of space and you will gain a much greater understanding of how to cook and eat healthy food," said Cllr Nardelli.

There will be four categories:

- **Creative Spaces Awards** – searching for creative ways of using our urban landscape for community growing.
- **Sunshine Awards** – celebrating the ways people have brought a bit of sunshine into the lives of others through community growing.
- **Young and Old Awards** – celebrating food growing which brings together people from different generations.
- **From Patch to Plate Awards** – celebrating projects which grow food and go on to make it into something special for sharing with others.

You can either enter yourself or your organisation, or you can nominate another person or group who you think has contributed to community food growing in the borough.

All entries must include visual evidence and written explanations. The closing date for entries is September 30.

► For full details of how to enter, visit www.wandsworth.gov.uk/growwandsworth, email pbattista@wandsworth.gov.uk or call (020) 8871 6044



New way to pay

Paying for parking in Wandsworth has become easier with the introduction of new machines that accept credit and debit cards.

The council has replaced 140 coin-operated pay and display machines with new ones that accept cards only. More machines will be replaced from this month and when this phase is completed a quarter of the borough's machines will be cashless.

The machines have large colour screens with step-by-step instruction diagrams, and if you don't have a card on you there will still be coin-operated machines nearby.

As well as making it easier to pay, the new machines will mean fewer machines are vandalised.

Regular users may want to join Parkmobile, which means you can pay via your mobile phone without needing to use a machine at all. To find out more and register visit www.parkmobile.co.uk or call (020) 3003 2523.



Launching Round 2 of the Wandsworth Grant Fund

Investing in the Brighter Borough



The second round of the Wandsworth Grant Fund is open for applications from September 2.

The Wandsworth Grant Fund replaced Wandsworth's Big Society Fund, various arts grants, the Youth Service Community Grant, the Children and Young People's Plan Small Grant and the Wandsworth ECO Fund.

People can now apply to just one council team, rather than across several council departments, so cutting down on red tape.

Round 2 will open for applications on 2 September with a deadline of 2 November. Applications are invited under one or more of the following themes:

- Arts and Culture
- Environment and Attractive Neighbourhoods
- Children and Young People
- Citizenship and Civic Engagement
- Achieving Aspirations and Potential
- Health and Well being

Ward councillor acknowledgment of each application is required and specialist council officers evaluate each application. Applicants will find out on January 26 2016 if they have been recommended for a grant award.

Read more and sign up for regular updates at

www.wandsworth.gov.uk/wgf

Email: wgf@wandsworth.gov.uk

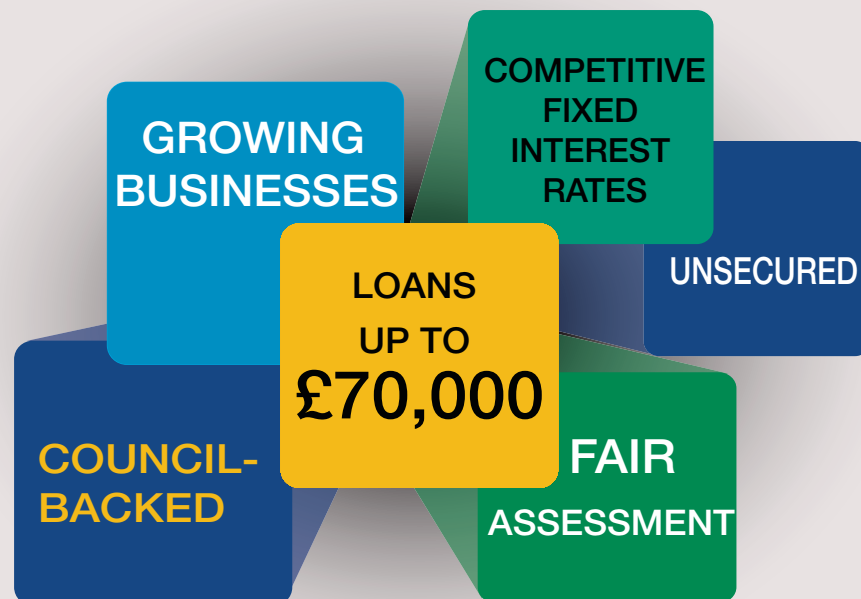
Get Wandsworth Grant Fund updates on [twitter - @grantswandbc](https://twitter.com/grantswandbc)

There will be a series of Meet the Funder and Bidding workshops in September and October. To find out more and to book please go to www.wandsworth.gov.uk/wgf.



Wandsworth Business Loan Fund

Contact us: 0845 603 2820, wandsworthloans@gle.co.uk, Visit glebusinessloans.co.uk or bit.ly/wandsworthloans



Provided by:



Supported by the Regional Growth Fund

Wandsworth Gets Results

Wandsworth is committed to being an Open Council, making it easy for residents to find out how we spend your money and how good we are at delivering services. Every year in this Scorecard we let you know how we are performing on a selection of key indicators which matter most to local people. In 2013 84% of residents were satisfied with the way the council runs its services.

We are one of the few councils in London to show you how we perform compared with all other London councils – visit www.wandsworth.gov.uk/opencouncil to see for yourself and give us feedback on how we are doing.

HOW WELL DO WE DELIVER HIGH QUALITY, VALUE FOR MONEY SERVICES?

Are we building a prosperous, vibrant and cohesive community?

Indicator	2013-14	2014-15	Improved?	Comment?
Number of job outcomes secured through Wandsworth Work Match since it launched in September 2013	<i>new for 14-15</i>	272	-	Work Match continues to be at the forefront of the council's work to help Wandsworth residents secure employment with employers across the borough.
Number of shared ownership sales completed	148	199	✓	
The percentage of major planning applications processed within 13 weeks	72%	85%	✓	
The gap between percentage of people claiming out of work benefits in Wandsworth compared with London as a whole	2.8%	2.6%	✗	Wandsworth has the fifth lowest rate of people claiming an out of work benefit in London – 2.4% better than the London average in 2014/15. The number of claimants in Wandsworth continues to fall but given the already low numbers, Wandsworth position relative to London has narrowed slightly as the London percentage has decreased at a faster rate.

Have we improved opportunities for children and young people?

Troubled Families turned around	265	660	✓	Almost all families (94%) that have received support from this team now have children that regularly attend school, commit much less or no crime and no longer subject their neighbours to antisocial behaviour. Of the families in which an adult has started work, this figure rises to 100%.
Progression by 2 levels in writing between KS1 and KS2	96%	96%	-	Wandsworth's result is above the national average and in line with the London average. Wandsworth is ranked equal 4th nationally.
Progression by 2 levels in Maths between KS1 and KS2	94%	93%	✗	Wandsworth's result is above the national average, London average, and is ranked equal 3rd nationally.
Percentage children reaching a good level of development under Early Years Foundation Scheme	54%	64%	✓	
Average time taken in days for a child to move in with their adoptive family after entering care.	566	512	✓	
Secondary school persistent absence rate	5.40%	3.8%	✓	
Primary school persistent absence rate	3.40%	2.2%	✓	
Rate of permanent exclusions from school	0.11%	0.13%	✗	Result is only slightly below last year and remains above the national average.
Under 18 conception rate	25.5	21.4	✓	

How well do we deliver high quality, value for money services?

Indicator	2013-14	2013-14	Improved?	Comment?
The percentage of council tax which the council collected during the year	98.3%	98.4%	✓	
The percentage of business rates which the council collected during the year	98.9%	99.5%	✓	

Are we making Wandsworth an attractive, safe, sustainable and healthy place?

Serious acquisitive crime rate per 1,000 population (includes residential burglary, motor vehicle crime and robbery)	19.43	16.27	✓	
Number of Anti-Social Behaviour-related calls to the police per 1000 population	39.19	28.91	✓	
Violence with injury per 1,000 population	4.90	6.56	✗	This recent increase in crime is mirrored across all London boroughs and is widely acknowledged to be due to a change in crime recording techniques. However, despite the increase, Wandsworth is still below the London average in terms of number of offences, and the 4th lowest in Inner London. Wandsworth also remains the safest inner London borough for overall crime.
Household waste recycled, composted or reused	20.4%	19.6%	✗	Nationally levels of recycling have slowed. A new, externally funded, Charlie & the Chocolate Factory style "Golden Ticket" recycling incentive scheme has been launched. The viability of providing a garden waste composting service at no cost to the Council will also be re-examined along with options for a food waste service.

Are we promoting health and wellbeing for all adults with personalised and preventative care and support for adults in need?

Job Seekers Allowance claimant rate	2.5%	1.8%	✓	
Number of problem drug users leaving treatment having completed treatment	74	51	✗	Although this figure has declined, this is in line with a fall in the number of drug users who meet the criteria. Wandsworth continues to work to reduce the number of drug users in the borough.
The percentage of eligible people offered an NHS Health Check in Wandsworth	24%	30.6%	✓	Every year we aim to deliver NHS Health Checks to at least 15% of those eligible. This year the number of people eligible in Wandsworth increased slightly, but we still exceeded our 15% target by inviting almost 20,000 people for their Check and delivering nearly 10,500 Checks – an uptake rate of 53%.
Percentage eligible people who have received an NHS Health Check	18%	16%	✗	This is another good year for the Health Checks service – we've met our targets for all of the past six years and we've been recognised nationally as being one of the top performers in the country. We are above the London and national averages on all counts – invitations, delivery and uptake rate.
Number of people quit who quit smoking through the smoking cessation service	1,530	1,570	✓	
Percentage of clients who receive Direct Payments to help them pay for and manage care services themselves	17.3%	21.0%	✓	
Rate of admission of older people (65+) into residential and nursing care per 100,000 population	521.6	464.6	✓	
Average length of stay in bed and breakfast accommodation (weeks)	11	15	✗	The increase in 2014/15 was due to higher levels of homelessness and admissions into temporary accommodation during the year.
Number of private sector dwellings made decent	253	261	✓	

Estate upgrade plans on track

The council is moving ahead with plans to rebuild parts of the Winstanley and York Road estates in Battersea, and the Alton estate in Roehampton.

The projects involve replacing hundreds of outdated post-war properties with high quality new homes, built to modern design standards. Every council tenant and owner occupier living in the outdated blocks is being offered one of the brand new homes.

Hundreds of additional properties will also be built on the estates, including more social rent and affordable homes for local families on lower incomes. Improved parks, community centres, libraries and sports facilities are also part of the plans.

►► To keep up to date sign up for e-news alerts at wandsworth.gov.uk/winstanleyyorkroad and wandsworth.gov.uk/roehampton



Artist's impression of the new look Danebury Avenue in Roehampton



Artist's impression of the new leisure centre on York Road, Battersea

Sign up for

WANDSWORTH

24

seven

wandsworth.gov.uk/24seven

Weekly news straight to your inbox

Time to quit?

You can get stop smoking support without needing an appointment:

- Pop into any pharmacy in your area
- Get in touch for up to date times and locations of our drop-in clinics

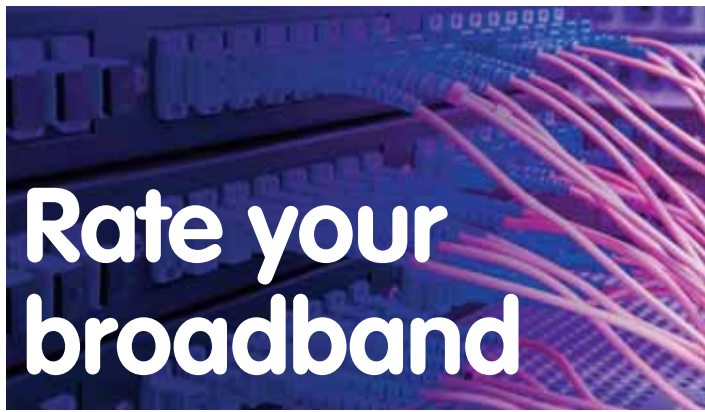
Get in touch...

Freephone: 0800 389 7921

Email: stopsmoking.team@wandsworth.gov.uk

www.stopsmokingwandsworth.co.uk

TC.1908(S.14)



The council wants local people to rate the speed and quality of home broadband services across the borough.

Recent research has revealed inconsistencies in local internet speeds and significant 'not spots' where no high speed fibre is available. The results of the survey could be used to lobby for new investment in Wandsworth's broadband infrastructure and to secure a better deal for local consumers.

Ravi Govindia, council leader, said: "The council has an important role to play in pinpointing the weak spots, demonstrating local demand and convincing the industry to prioritise investment in our borough."

The survey asks residents to rate their current internet service in terms of speed, reliability and value for money. A separate survey for businesses is also underway.

►► **Take the survey at**
www.wandsworth.gov.uk/broadbandsurvey.

Pop-up business support

A roving pop-up is visiting five Wandsworth libraries in September offering free advice, workshops and networking to help Wandsworth businesses grow.

The week-long pop-up is a collaboration between Wandsworth Council, small business network Enterprise Nation and business insurance provider Simply Business.

It will be giving face-to-face guidance and support from experts to micro businesses, small firms and sole traders looking to take their business to the next level.

Different workshops will be offered every day and there will be a bookable lunchtime 'power hour' offering more detailed one-to-one advice.

- September 21 Wandsworth Library – Access to finance and Networking Techniques
- September 22 Balham Library – Digital workshop and Business Growth Techniques
- September 23 Tooting Library – Sales and Marketing and Social Media for Business session
- September 24 Battersea Library – Techniques on Leadership and Management and Access to Finance
- September 25 York Gardens Library – Learn How to Recruit a Team

►► **Visit** www.enterprisenation.com/popups or www.wandsworth.gov.uk/business, or call (020) 8871 7807.

Do you want a reliable trader?

For safety and security visit the Age UK Business Directory today

- Large selection of trustworthy traders and businesses
- Checked by Age UK London staff



Call us free on
0800 334 5056
 or visit us online



www.aubdlondon.co.uk

Traders interested in becoming a member company on the directory, please contact the team on businessdirectory@ageuklondon.org.uk or phone 020 7091 2591

Registered Charity Number 1092198

care4me

YOUR COMMUNITY DIRECTORY



- Need support?
- Looking for care services?
- Find advice centres nearby
- Join a self help group
- Multi-lingual search facility
- Miedzynarodowa wyszukiwarka
- بحث باستخدام لغات مختلفة ومتعددة

Search for healthcare, community services, GPs, dentists, pharmacies and more in Wandsworth.

A charity-led directory
 "enabling people
 to achieve"

www.care4me.org.uk



Owning your first home

Hundreds of new affordable homes are being built in Wandsworth and many are available right now.

If you're a council tenant or a first-time-buyer who can't afford to buy on the open market then our dedicated home ownership team could help you get a foot on the ladder.

The best way to find out about your options is to come along to the Affordable Housing Day on Thursday 22 October at the town hall. There will be free information and expert advice on the different schemes available, like Shared Ownership and Right to Buy. You can also get a sneak preview of the new homes being built across Wandsworth and get your application started.

If you can't make our open day then these pages offer a quick guide to some of the help available and the affordable homes now on sale. If you want more information about any of the schemes listed below visit www.wandsworth.gov.uk/homeownership or contact the homeownership team at housesales@wandsworth.gov.uk or (020) 8871 6016.

Help for first-time-buyers

Shared Ownership

If you can't afford to buy your first home on the open market then Shared Ownership could be the way to get your foot on the ladder.

This scheme enables you to buy a share of a new property that you can afford, typically using your savings as a deposit and a conventional mortgage. You then pay rent on the share of the property you don't own. This means you can buy with a relatively small deposit and mortgage. You can also gradually buy-up more of your home if you can afford it, so you end up owning the whole property and paying zero rent.

To see if you qualify for Shared Ownership in Wandsworth fill out the online form at www.wandsworth.gov.uk/homeownership

Maria's Shared Ownership story

Local resident Maria Golasowska bought a share of her apartment at Battersea Reach from Notting Hill Housing last year. She said:

"Notting Hill Housing has provided me with an opportunity to find a beautifully designed flat at an affordable price so I am really thankful. With only a short walk to Wandsworth High Street and Battersea Park, you are never short of something to do."



Help for council tenants

Your Right to Buy

Qualifying council tenants have the right to buy their own home with a maximum discount of £103,900 off the market price. The funds raised through Right to Buy sales will continue to be used to pay for new affordable housing options for other local people.

Read our full information booklet at:

www.wandsworth.gov.uk/homeownership

or contact the team at email

housesales@wandsworth.gov.uk or call (020) 8871 6016

Right to Buy Mobility Grant

This scheme gives grants of up to £30,000 to eligible tenants who qualify for Right to Buy but are unable to purchase their council property. This grant must be used towards buying a home on the open market and can be used to top-up our successful Home Purchase Grant Scheme (see below).

House Purchase Grant

This scheme gives council tenants a grant to help them buy a home of their own anywhere in the UK or European Union if they give up their current property so another local household can move in. The grant can also be used to adapt an existing UK property or as a deposit towards a Shared Ownership property.

Tenants who give up a one-bed council home could be eligible for up to £50,000. The maximum grant for a two-bed or larger is £80,000.

Shared Ownership homes available now

Here's our guide to some of the shared ownership developments you can now apply for across Wandsworth:

Battersea Reach - Notting Hill Housing

The latest phase of Shared Ownership comprises one and two bedroom apartments. Onsite amenities include Young's waterfront bar, a health and beauty salon, nursery, coffee shop and boutique French patisserie, Cake Boy, grocery stores, a fitness suite and a 24-hour concierge service.

020 8357 4444
sales@nhhg.org.uk
www.nottinghillhousing.org.uk

Westfield House, SW18 - Thames Valley Housing

Thirty three brand new shared ownership apartments with a mix of one, two & three bed homes, will be available shortly in the heart of Wandsworth.

(020) 8607 0550
sales@tvha.co.uk
www.tvhsales.co.uk

Butler Court SW11 - Thames Valley Housing

Eleven modern one-bed apartments will be available to view in Battersea from around December onwards.

(020) 8607 0550
sales@tvha.co.uk
www.tvhsales.co.uk

Chancery Building SW8 - Peabody

Dozens of new shared ownership homes are now available at this stunning new development in Nine Elms, Battersea.

(020) 7021 4842
enquiries@peabodysales.co.uk
www.peabodysales.co.uk

Putney Plaza SW15 - Octavia Living

A new scheme of 11 one-beds, 15 two-beds and as many as eight family-sized homes in Putney.

(020) 8854 5500
sales@octavia.org.uk
www.octavialiving.org.uk



Open the door

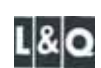
Affordable housing open day

22 October 2015, 2-8pm

*Open
the door
to your
first home!*



The Civic Suite, Town Hall
Wandsworth High Street SW18 2PU
For more information call (020) 8871 6016





Can you stop this October? – Take the 28 days challenge

People who stop smoking for 28 days are 5 times more likely to stop smoking for good.

Giving up smoking will improve your wealth and health and help prevent serious illnesses. Your Local Stop Smoking Service can advise you on the right products to use and offer you regular support and information.

Get free* support from your local Wandsworth GP or Pharmacy.

Drop-in Services are also available at St Georges and Queen Mary's Hospital

Call (Freephone): **0800 389 7921**

Email: stopsmoking.team@wandsworth.gov.uk

Or visit www.stopsmokingwandsworth.co.uk

If you are aged 40 –74 and would like to know more about your health*, whether you smoke or not, **get a Free NHS Health Check today**

*Conditions apply

Five self-help tips to stop smoking

- 1 Think positive: you may have failed in the past but this time you can succeed.
- 2 Make a promise, set a date and stick to it.
- 3 Watch what you drink. Studies show that fizzy drinks, alcohol, cola, tea and coffee all make cigarettes taste better, so avoid them.
- 4 Identify the times and situations when you crave cigarettes and try and distract yourself.
- 5 Make a list of reasons to quit. Keep reminding yourself why you gave up.



Get your **FREE** NHS Health Check from your GP or selected Wandsworth pharmacies

You must be aged 40-74, have not been previously diagnosed with diabetes, kidney disease, heart disease or stroke and have not had an NHS Health Check in the last five years.

For more information call the council's public health team on (020) 8871 5026, or visit www.wandsworth.gov.uk/healthchecks



Helping you prevent
 diabetes
 heart disease
 kidney disease
 stroke & dementia



Work Match



“We’re delighted over 300 people have taken advantage of their superb service so far”

300 local jobs and counting

The council’s Work Match local recruitment team has now helped over 300 unemployed Wandsworth residents begin a new career.

The team is currently on the look out for new starters in retail, construction, childcare, hospitality and many other industries. They can provide pre-employment training to get candidates ready for work and specialist courses to provide vital entry qualifications.

They also offer support to create winning CVs and provide interview coaching.

Ravi Govindia, council leader, said: “The local jobs market is in great shape but we want to ensure it’s our residents who secure the valuable new starter roles local businesses create. That is where our superb Work Match team comes in. They link local people to local opportunities, giving Wandsworth candidates a vital edge.

“We’re delighted over 300 people have taken advantage of their superb service so far and that so many businesses are now using Work Match to help them find the staff they need to grow and prosper. If you’re looking for a job, or new staff, get in touch with the team today.”

► Visit www.wandsworthworkmatch.org or email: wandsworthworkmatch@wandsworth.gov.uk or call (020) 8871 5191



More school choice for parents

A brand-new primary school, Floreat, opens its doors this month.

Floreat Wandsworth will open in Garratt Lane, Earlsfield, providing an extra 420 places to children of all backgrounds and abilities in this part of the borough.

Meanwhile Mosaic School is moving into its new building in Roehampton Lane, with space for another reception class. The school, previously housed in temporary accommodation in Wimbledon, has been judged outstanding following its first ever Ofsted inspection. The inspector praised the school's leaders and governors in 'establishing a school community in which pupils of different faiths and cultures embrace their differences.'

Extra secondary places are also available at Harris Academy, Battersea, which is increasing to six forms of entry, and Saint John Bosco College, which is moving to its brand-new home in Parkham Street, Battersea at the end of September and will increase to seven forms of entry.

Many borough schools will be holding open days to prospective parents over the coming few weeks.

► Find out more at www.wandsworth.gov.uk/admissions.



Head of school at Floreat Matthew Custance



Mosaic head teacher Kate Baum and students admire a model of the new school.



Beautiful Burntwood

The £40m rebuild of Tooting's Burntwood School has been shortlisted for this year's RIBA Stirling Prize.

The school will find out next month if it has won in the competition to find the building that's judged to have

"made the greatest contribution to the evolution of architecture over the past year".

The school has already won two major design awards. In March it won a coveted Civic Trust Award while earlier this month it followed that up with a top prize in the 2015 New London Architecture (NLA) Awards

Facing up to your feelings

Often men grow up believing “big boys don’t cry”. But how unhealthy is it to bottle up emotions?

Men are three times more likely to die by suicide than women, yet we know they are far less likely to use mental health services freely available to them here in Wandsworth. Stress, loneliness, major life events and drink and drug misuse can all contribute.

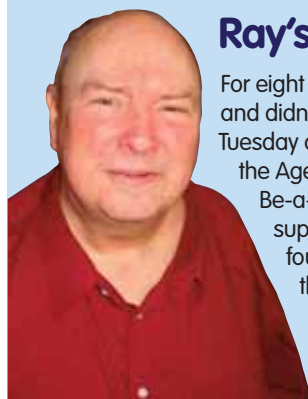
Nearly all men will need some help during their life to keep their mental health on the right track - sometimes chatting to a friend, a partner or even your GP can be enough to stop things spiralling.

Where to get help

Organise an appointment with your GP. They can provide you with the help and guidance needed to get you back on the right path or refer you on for further support.

Big White Wall is a safe anonymous online community of people who are anxious, down or not coping, who support and help each other by sharing what’s troubling them, guided by trained professionals. www.wandsworthiapt.nhs.uk/partner/big-white-wall

Cognitive behavioural therapy (CBT) is a talking therapy that can help you manage your problems by changing the way you think and behave. If you think you could benefit, you can refer yourself to this programme at www.wandsworthiapt.nhs.uk/about-us



Ray’s story

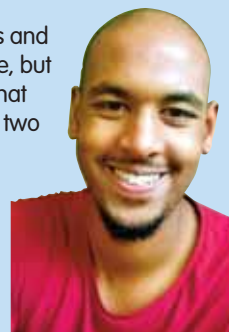
For eight years Ray rarely left the house and didn’t know whether it was Monday, Tuesday or Christmas Day. He contacted the Age UK Wandsworth

Be-a-friend service which provides support and companionship and found a reason to get out of bed in the morning. Visit

www.ageuk.org.uk/wandsworth/our-services/be-a-friend-service

Nassir’s story

Nassir experienced bullying, racist attacks and saw his family break apart at a young age, but it was injuries during his sporting career that led to a battle with depression that lasted two years. Through the support of friends and community leaders, Nassir overcame his depression and the experience gave him a passion for psychotherapy. He has passed a family therapy course and wants to help other Wandsworth people.



Get a **MAN MOT**

**Men - got a niggling health worry
but don't want to visit your doctor?**

**Have a *CONFIDENTIAL* online chat with a GP
chat for free 24/7 www.wandsworthman.net**

Wandsworth **MAN**
be good
to yourself

THE BRIGHTER BOROUGH
Wandsworth

Stay protected this winter – Get a FREE flu jab

Anyone can catch the flu and it can be a really serious illness for some. Even those who had a flu jab last winter need another one this year to stay protected.

People living in Wandsworth who are vulnerable and at increased risk of complications from flu are being urged to protect themselves and their family with a free flu jab.

The flu vaccination will be offered FREE of charge to people aged 65 years and over, people under 65 who have long term medical conditions, people living in long stay care facilities, pregnant women, children aged 2 to 4 and those in school years 1 and 2 and carers of an older or disabled person.

You can arrange for your vaccination through your GP or local pharmacy; it's free because you need it.

Frontline health and social care workers are also encouraged to get a free jab to protect themselves and those they work with.

Wandsworth Council is working with the NHS and local pharmacies to make sure people at most risk from flu get the free jab. For more information on flu and the flu vaccine check out: www.nhs.uk/flu



GOLDEN YEAR FOR LIBRARY SERVICE

This year the borough's mobile library service is celebrating half a century of helping the borough's housebound.

From 1965 the service made fortnightly visits to all 'known incapacitated people' reported by the Welfare Service, plus old people's homes and the prison.

All this was with just one van and one librarian, although the borough librarian's annual report for that year warned that if the service became any more popular, 'it will be necessary to add another van and librarian'. The van, and the first librarian, Don Wheeler, are picture here, along with users of the service in 1967.

The service is still going strong, and the team is happy to visit older or disabled people or carers, and can visit on a temporary basis to people recovering from an operation or an accident.

There is no charge for the service. To find out more call 020 8877 1742 (choose option two) or email hdls@gll.org



What's on?

WELCOME TO WHAT'S ON IN WANDSWORTH
YOUR GUIDE TO ART EXHIBITIONS,
THEATRE PERFORMANCES,
CHILDREN'S EVENTS AND
SOCIETY MEETINGS

Children's
events are
shaded
yellow

EVENTS FOR SEPTEMBER, OCTOBER AND NOVEMBER 2015



August 27 - 1 November (Wednesday-Sunday and Bank Holidays 11am-5pm)

Exhibition: What do I need to do to make it okay?

An investigation into damage and repair, disease and medicine, and the healing and restoration of landscapes, bodies, minds and objects through stitch and other media. Free. Pump House Gallery Battersea Park SW11. Call 8871 7572. www.pumphousegallery.org.uk

How to be listed

Send details (including access for people with disabilities) by 12 October to:

whatson@wandsworth.gov.uk

We cannot guarantee that your entry will be inserted. This is a free service. The information in this guide has been provided by the advertisers themselves.

Wandsworth Council accepts no responsibility for the accuracy of the information or for any event not organised by the council.

Free entry
Wheelchair access
Hearing loop

Saturday September 5 10.30am - 12.30pm

Family fun at the Museum

Drop in sessions for kids.

Free.

Wandsworth Museum at Earlsfield Library, Magdalen Road SW18. www.wandsworthmuseum.co.uk

Tuesday September 8 9.30-10.30am and 6-7pm

Free Trial Body Alignment & Posture Classes

Based on the Ehrenfried Method. Relieve pain from bad posture and habits at work, regain mobility, flexibility and balance. Please bring a mat. 9.30am class at: Heaver Studio, 239 Balham High Road SW17 (entrance is on the right side of

Streathbourne Road, second door); 6pm class at: St Mary's Church, Putney High Street SW15, enter through Pantry Café, first floor. Must book in advance. Call 0800 756 3547, email info@ehrenfriedmethod.co.uk. www.ehrenfriedmethod.co.uk

Thursday September 10 3-5pm

Vibes and Buttons

Self-help group every Thursday. Plus Saturday group in Putney. Penfold Centre, 1 Neville Gill Close SW18. See website for full details www.vbselfhelp.co.uk

Saturday - Sunday 12-13 September

Tooting Foodival

The Foodival returns for its eighth year, promising to celebrate the diversity of tasty dishes that can be grown, cooked and enjoyed in Tooting. Get latest updates from the blog: <http://tootingfoodival.blogs.pot.co.uk/>

Monday September 14 8pm

Masterworks of C20 Photography

Visitors £7. South West London Decorative and Fine Arts Society at Dryburgh Hall, Putney Leisure Centre, Dryburgh Road SW15 **Disabled access: there is a lift to hall level but no ramp from the car park.**

Thursday September 17 7.45 for 8pm

Local Planning Forum

Free. Wandsworth Society at West Side Church Melody Road, SW18 www.wandsworthsociety.org.uk **Wheelchair**

Thursday September 17 8pm

Lecture: Henry Smith - his life and legacy

By historian Lucy Lethbridge, author of the recent book on Henry Smith, the Wandsworth born philanthropist who founded one of the UK's largest charitable trusts when he died in 1628. **Free** All Saints Church Wandsworth High Street SW18

What's on?

SEPTEMBER, OCTOBER AND NOVEMBER

Thursday September 17 4pm

Life drawing class

Part of a monthly art educational programme. For artists and anyone else in the borough interested. Wimbledon Art Studios, Riverside Road, SW17 www.wimbledonartstudios.co.uk

Thursday September 17 doors open at 12:15 until 2:30pm

Wandsworth Lunch Club

New lunch club - meet new people and enjoy a delicious 2 course meal. **Pay £20 for membership and pay £3 per week for a meal. Meals are £8.50 for non-members.** Penfold Centre, Neville Gill Close, SW18. Call Rachel 07538 713409.

Saturday September 19 12-4pm

St Mary's Fair

BBQ, gifts, books, cakes, bouncy castle, church tour and have a go at bell-ringing. Dog show, raffle. St Mary's Church, Battersea Church Road SW11. www.stmarysfair.co.uk



Saturday September 12 10am - 5pm

Totally Thames Putney Funday

Watch the Great River race, travelling past Putney from about midday; Radio Jackie roadshow; art, craft and gift stalls; pavement painting facilitated by girl guides, Giant games, mini funfair, Punch & Judy, health zone, street food, live music, dance workshops. Embankment and in Church Square, Putney SW15.

Saturday September 19 9am-4pm (kids fun run 12-2pm)

Charity Open Day and Kids Fun Run

Taster treatments and classes all in aid of charity, including back checks, massage, reflexology, one to one coaching, meditation and Pilates. Fun run: under 8s will run 300 metres, 9-12s will run 1 km (1 lap of the park). All participants receive a medal and goodie bag. Entry by donation to Small Steps, who work to support children with disabilities and their families. Putney's Live Free Clinic and Wandsworth Park, both Putney Bridge Road SW15. Space limited so contact 8780 0898 or info@livefreewellness.co.uk to reserve your space for either event. **wheelchair**

Saturday - Sunday September 19-20

Open House London

Revealing great architecture for free. Across London - Wandsworth venues

Thursday November 12-Sunday November 15 (Thurs 2 - 10pm; Fri 12 3pm - 10pm; Sat, Sun 11am-6pm)

Winter Open Studios

Around 150 resident artists will be opening the doors to their creative spaces and sharing what they do with visiting art lovers. Free entry. Wimbledon Art Studios, 10 Riverside Yard, Riverside Road SW17. www.wimbledonartstudios.co.uk



Matt Kemp

include Graveney School SW17, Spiral House SW12, Gala Bingo Hall SW17 and Pump House Gallery SW11. www.openhouselondon.org.uk

Sunday September 20 11am-5pm

Bellevue Summer Fair

Family fun, games, music, raffle and dog show. Bellevue Road Wandsworth Common SW17 www.bellevuevillage.co.uk

Monday September 21 7.30pm

Talk by a puppeteer

Join us for a talk by a female puppeteer who used to work on such shows as Thunderbirds. Star and Garter, 4 Lower Richmond Road SW15. putneywi.wordpress.com or email putneywi@outlook.com

Friday September 25 8pm

Talk: Meet the Huguenots

With speaker Charlie de Wet, Chair of the Huguenots of Spitalfields. Wandsworth Historical Society, Friends Meeting House, 59 Wandsworth High Street, SW18. Call 8874 6341. Email ngrobson@tiscali.co.uk www.wandsworthhistory.org.uk

Friday-Sunday September 25 -27

Get set for Tootopia

New outdoor food festival will see the town centre's award-winning eateries take to the streets to showcase their delicious offerings.

Tooting SW17. <http://tootopia.co.uk/>

Saturday September 26 12-3pm

Southfields Harvest

Back by popular demand. An afternoon of good food and drink, and a display of Southfields' best culinary talents (prizes for show-stopping cakes, jam and chutney). Children's scarecrow and vegetable monster competitions. Local craft beer and produce, BBQ, apple juicing and cake sale.

Free entry.

St Barnabas Church, Lavenham Road, SW18. www.southfieldsharvest.co.uk

30 September 6-9pm

Caius House first anniversary

Celebrating its first anniversary in its new

building. Come and join in the fun! Music, live performances, dance, food and drink. **Free entry-donations welcome.** 2 Holman Road, Battersea SW11. Call 3818 6210 or email kristine.dejesus@caiushouse.org **Wheelchair**



Sunday September 27 - Sunday October 4

Balham Food Festival

Showcasing the extraordinary diversity and international flavour of Balham's restaurants, cafés, pubs and delicatessens, kicking off with the



October 3-4 and 10-11 11am-6pm

Wandsworth Artists' Open House

Over 100 artists will show their work in their homes and studios. Visitors can take in an impressive diversity of art in 10 categories including paintings, drawings, photographs, prints, sculpture, jewellery and ceramics. Prices range from £20 up to £10,000, with most under £350. Entry is **free.** wandsworthart.com

Barnes RFC

Keen to attract players of all ages. We are a thriving and rapidly developing community rugby club and we have rugby for all ages and all standards Barn Elms, Barnes (administered by Wandsworth). www.barnesrfc.org

Balham Banquet, from 11am on 27/9, with food and drink stalls, cookery demonstrations by professional chefs, live music and kids activities. Contact: Twitter @balhamfoodfest Balhamfoodfestival.com. Local businesses wishing to take part should contact info@balhamfoodfestival.com or 8432 3441.

**October 5 and 7
4.30-5.30pm**

Fencing class for kids
For beginners aged 7-12 years. **£8 per session** including the use of all equipment with half price concessionary rates available for local estate

dweller. Classes every Monday and Wednesday. Ethelburga Community Centre, SW11. Email: londonunifencing@hotmail.com or www.thefencingschool.com

Thursday October 8 7.45 for 8pm

Buying, Growing, Eating Locally

Find out why local food is important, how 'buying local' is good and where to get tasty, healthy, local food in Wandsworth. Hear about the possibilities from EcoLocal - more details www.ecolocal.org.uk. Wandsworth Society at West Side Church Melody Road, SW18.

Free Wheelchair

Saturday October 10 7.30pm

Benjamin Grosvenor (piano)
Full-blooded programme of romantic music by composers ranging from Mendelssohn to Cesar Franck, Ravel and Liszt, all regarded as piano virtuosos of their age, and tonight performed by a 21st century piano virtuoso. **Tickets £18, concessions £14.**

St. Luke's Music Society, St. Luke's Church, Thurleigh Road SW12. Box office 07951 791619. Book online www.slms.org.uk

Monday October 12 8pm

William de Morgan and the Arts and Crafts Movement
Visitors £7.

SWLDFAS at Dryburgh Hall, Putney Leisure Centre, Dryburgh Road SW15
Disabled access: There is a lift to hall level but no ramp from the car park.

Monday October 19

Wandsworth University of the Third Age
Are you semi retired? Looking to learn



Wednesday September 23 to Thursday 3 December

Gregoire Pont – Cinesthetics

Exhibition of limited-edition prints.
Maestro Arts, 1 Eastfields Avenue SW18. www.maestroarts.com

something new or develop an old interest? We have monthly meetings with a speaker and many small learning groups including history, science and art. Call 8878 5783, email wandsworthu3a@hotmail.com www.wandsworthu3a.org.uk

Wednesday 28 to Saturday 31 October 7.45pm Wed-Fri; Sat 5pm.

William Shakespeare's Land of the Dead
John Heimbuch's hilarious zombies-meet-Shakespeare epic. **Tickets £10, concessions £7.50**
Wednesday and Saturday. Chestnut Grove School Theatre, Boundaries Road SW12. Box office: 07914 657524 or book online www.southsideplayers.org.uk

Tuesday November 17 (6.30-9.30pm) and Wednesday November 18 (8.30am-3.30pm)

Wandsworth Friends of Trinity Hospice's Christmas Fair
Over 40 stalls, helping to raise money for Trinity Hospice. St Luke's Church, Ramsden Road SW12.

Thursday 19 November, 7.45 for 8pm

Municipal Dreams
Social historian John Boughton will give an illustrated talk on the reforming efforts and achievements of local authorities, with particular reference to council housing schemes in the Wandsworth area. **Free.** Wandsworth Society at West Side Church, Melody Road SW18. www.wandsworthsociety.org Read his blog <https://municipaldreams.wordpress.com/>

Saturday November 21 11.30am - 3pm
St Paul's Christmas Fair

Admission: 50p.
St Paul's Community Centre, 23 Inner Park Road SW19.
wheelchair

Monday November 23 10am

The Putney Village Network for Seniors
Weekly coffee morning for older people living in/around Putney. Members can call the Network coordinator for all kinds of help and also make new friends at our social events. BB's Muffins, Putney Exchange, Putney High Street SW15. Call 8144 3460, visit www.putneyvillage.org.uk



Saturday November 7 7.30pm bonfire, 8pm fireworks

Fireworks

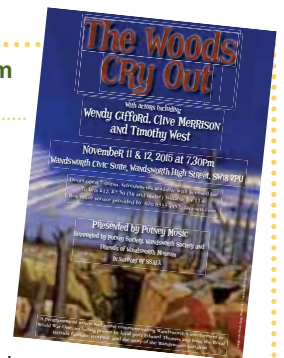
Spectacular display set to music. For tickets and more information visit www.wandsworth.gov.uk/fireworks

November 11-12 7.30pm (doors 7pm)

The Woods Cry Out

A reflection, in words and music, on the Great War and the part played by Wandsworth and its Battalion during the four years of conflict. Including performances by Timothy West and Wendy Gifford. Refreshments and licensed bar.

Tickets £12, £7.50 (18 and under). Suitable for children 11+. Putney Music at Wandsworth Civic Suite, Wandsworth High Street SW18. Box office 8333 4457 or tara-arts.com



Be a mould-buster

As autumn approaches Wandsworth's public health director Houda Al-Sharifi is advising residents on the simple steps we can all take to avoid mould at home.

She said: "In the vast majority of cases mould is caused by the build up of condensation which is entirely preventable. I would urge people to follow these simple steps to nip any potential problems in the bud."

- Ensure air can circulate throughout your home and can escape to the outside – open windows if necessary
- Do not block vents or chimneys
- Always allow steam generated in your bathroom or kitchen to escape outside - open windows or use extractors
- While steam is being created close internal doors to prevent it spreading to other rooms
- When cooking cover pans and do not leave kettles boiling
- If possible dry washing outdoors, or in a bathroom with the door closed and window open
- Keep your home well heated. If you can't afford a suitable heating system or insulation a grant may be available. Visit <https://climateenergy.co.uk> or call 0800 358 6668.

If you already have mould, there are ways to treat it.

- Wipe down walls and window frames with a fungicidal wash
- After treatment, redecorate using a good quality anti-fungal paint to help prevent mould from recurring.

If you still have a mould or damp problem after following these steps, contact the council's private housing team on www.wandsworth.gov.uk/privatehousing/dampandmould or if you're a council tenant, contact your estate manager.



Don't be rushed, don't be hushed, stop scams

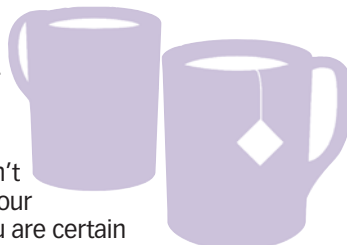
Nearly half of people in the UK have been the target of a scam. That means up to 150,000 people in Wandsworth have lost hundreds, sometimes thousands, even hundreds of thousands of pounds. The truth is – with reporting levels as low as five per cent for some types of scams – we don't really know.

At Citizens Advice Wandsworth we want local people to expose scams and help stop more people from falling prey to clever cons.

Scams come in every form, from doorstep double glazing sales to online investment and pensions offers. People may be targeted with 'vishing' calls where a fraudster impersonates their bank to collect their bank details, or by bogus companies offering computer services. Online scams include dodgy job adverts and offers for goods and services, while mail scams may ask victims to pay a fee in order to claim their winnings from a prize draw they haven't entered. Our advice is that if an offer sounds too good to be true, it probably is.

Scams thrive on silence. Fraudsters know that victims are often too ashamed to share what happened to them, meaning that scams can continue to spread unchecked. We're urging people to lift the lid on scams and start talking about suspicious email, junk mail, online ads or door-to-door sellers operating in their area.

When you receive an unsolicited approach or when looking for goods or services: don't be rushed and don't be hushed. If you're contacted out of the blue be on your guard, and never give your bank details out unless you are certain



you know who the person is, and that you can trust them. Take your time to make a decision and get your facts together before parting with your money or personal information, and speak out when you think you've spotted a scam

If you think you have been scammed:

CHECK with a trusted friend, relative or neighbour.

GET ADVICE and report it to Trading Standards through the Citizens Advice consumer service 08454 04 05 06, online www.adviceguide.org.uk or at one of our centres in Roehampton, Battersea and Tooting (see www.wandsworthadvice.org.uk for details)

REPORT scams to Action Fraud 0300 123 2040 www.actionfraud.police.uk.

TELL family, friends, neighbours so that they can avoid scams

>> WANDSWORTH CONNECTED >>

Talk to us online



weekly e-newsletter
www.wandsworth.gov.uk/24seven



www.twitter.com/wandbc



www.facebook.com/wandsworth.council



www.youtube.com/WandsworthBC

Doing it online

Using our website helps keep your council tax bills low

Pay your council tax

www.wandsworth.gov.uk/counciltax

Pay a parking fine

www.wandsworth.gov.uk/parking/payment

Apply for a parking permit/parking

www.wandsworth.gov.uk/parking/permits

Join the e-library

www.wandsworth.gov.uk/libraries

Search planning applications

www.wandsworth.gov.uk/planningregister

Check your refuse collection day

www.wandsworth.gov.uk/collectionday

Request a housing repair

www.wandsworth.gov.uk/housingonline

Check local roadworks

www.wandsworth.gov.uk/roadworks

Report a pothole

www.wandsworth.gov.uk/potholes

Pay your rent

www.wandsworth.gov.uk/rents

Other contacts at the council

Adult Care Information Service (020) 8871 7707

accessteam@wandsworth.gov.uk
www.wandsworth.gov.uk/acis

Benefits Service (020) 8871 8080

benefits@wandsworth.gov.uk

Carers information and support Wandsworth Carers Centre (020) 8877 1200

info@wandsworthcarers.org.uk

Children's Social Work Service (020) 8871 6622

cssduty@wandsworth.gov.uk

Consumer Protection (020) 8871 7720

esd@wandsworth.gov.uk

Community Care Services (020) 8871 7707

accessteam@wandsworth.gov.uk

Council Tax

(020) 8871 8081
counciltax@wandsworth.gov.uk

Education

(020) 8871 8013
edadmin@wandsworth.gov.uk

Electoral Services

(020) 8871 6023
electoral@wandsworth.gov.uk

Environmental Services

(020) 8871 6127
esd@wandsworth.gov.uk

Family Information Service

- including Nurseries
(020) 8871 7899
fis@wandsworth.gov.uk

Food Hygiene

(020) 8871 6139
esd@wandsworth.gov.uk

Fraud Hotline

0800 783 2263 (freephone)
fraudhotline@wandsworth.gov.uk

Graffiti Removal

(020) 8871 7049
graffiti@wandsworth.gov.uk

Home Ownership

(020) 8871 6016
housesales@wandsworth.gov.uk

Housing Advice

(020) 8871 6840
housingadvice@wandsworth.gov.uk

Housing Repairs and Tenancy Call your area team or management organisation

hms@wandsworth.gov.uk

Leisure Centres & sports facilities

(020) 8871 8154
sportsservices@wandsworth.gov.uk

Libraries

wandsworth.libraries@gll.org

Neighbourhood Watch

(020) 8871 7696
watchlinkmanager@wandsworth.gov.uk

Noise Complaints - council properties

(020) 8871 7490
hms@wandsworth.gov.uk

Private properties

(020) 8871 7869
esd@wandsworth.gov.uk

Parking

(020) 8871 8871
parking@wandsworth.gov.uk

Parks

(020) 8871 7530
parks@wandsworth.gov.uk

Rent collection Service

(020) 8871 8987
rents@wandsworth.gov.uk

Rubbish, Recycling and Litter (020) 8871 8558

wasteservices@wandsworth.gov.uk

Births, Deaths, Weddings and Civil Partnerships

(020) 8871 6121
registeroffice@wandsworth.gov.uk

Youth Clubs

(020) 8871 7553
youthservice@wandsworth.gov.uk

Tell us what you think

You can post comments on all our news stories www.wandsworth.gov.uk/news

Make a complaint or comment on a council service

www.wandsworth.gov.uk/commentsandcomplaints

Come to a Let's Talk meeting www.wandsworth.gov.uk/letstalk

Contact your local councillor www.wandsworth.gov.uk/councillors

YOUR CHANCE TO WIN £5,000

when you Recycle Right

IN THE Golden Ticket Recycling Prize Draw



To enter the **£5,000 Golden Ticket** prize draw, just fill out a Golden Ticket and pop it in your clear recycling sack or bank along with the clean and dry items listed opposite.

You can submit a Golden Ticket each time you fill a clear sack or use your recycling bank. But remember, only tickets found with the correct recycling items at the recycling plant will be entered into a draw. So the more you recycle the correct materials, the more chance you have of winning. The winner will also be invited to nominate a local community group* to receive a £2,500 cash prize.

A book of golden tickets will be coming through your door in the next few days and you can collect more from your local library, leisure centre or the Town Hall reception or visit wrwa.gov.uk/GoldenTicket to print your own.

The first draw will take place on 30th October 2015 with further draws taking place up until March 2016.

Good Luck!

*To be eligible community groups must meet the competition criteria including a clear commitment to encouraging recycling. Each £2,500 community reward prize can be divided between more than one local group.



For more details visit
wrwa.gov.uk/GoldenTicket

