

# Brightside

The magazine of Wandsworth Council

Issue 174 November 2015

## Burntwood School wins design prize



[Big changes in Wandsworth Town](#) p3

[Register to vote](#) p10

[Remembering the Balham Bomb](#) p22



Delivered to 140,000 homes - Balham Battersea Earlsfield  
Furzedown Putney Roehampton Southfields Tooting Wandsworth



Public Health  
England

**NHS**

# Got a child in year 1 or 2 at school?

---

Flu can be serious  
for young children.

Help protect them from  
flu with one simple  
nasal spray. It's free,  
fast and painless.

This year all children in school years 1 and 2  
are being offered the free flu vaccination.

---

**STAY WELL  
THIS WINTER**

[nhs.uk/staywell](https://nhs.uk/staywell)



Melissa Dalton, Nurse



How the Old Burial Ground will look

# Something's brewing in Wandsworth Town

**A new-look Wandsworth Town Centre is starting to take shape including hundreds of new homes, two new public squares, a better library, a new department store and a micro brewery.**

Recent highlights from the area's fast moving regeneration programme include the creation of 300 jobs at the new Debenhams at Southside Shopping Centre and a Saturday Fine Food Market setting up on Old York Road.

The new Light Bulb business hub has also opened its doors at providing a home for dozens of small businesses and a café which is open to the public.

New walking routes have been created through the neighbouring Filaments site linking the high street with King George's Park.

Even bigger changes are on the horizon with work now underway on transforming the long derelict Ram Brewery site into a new pedestrian quarter complete with a micro brewery, brewing museum, shops, bars, restaurants and hundreds more homes.

Work is also set to start on three neighbouring sites next to the old burial ground on Garratt Lane. This project will see a series of 1960s office blocks

replaced with 200 homes, a new state-of-the-art library, public square with seating and a play space for under fives. A quarter of the new homes will be offered to eligible local residents to rent or buy at a discounted rate.

A complete redesign of the Wandsworth One Way system is being developed which will vastly reduce traffic on the high street and make the entire town centre more pedestrian friendly. New plans will be published later this month.

For the latest town centre news sign up for e-news alerts at

[wandsworth.gov.uk/e-news](http://www.wandsworth.gov.uk/e-news)

## Inside November 2015

[www.wandsworth.gov.uk](http://www.wandsworth.gov.uk)

Cover: Burntwood School, curriculum building. Photograph, Rob Parrish

Concern over Crossrail 2	6	Direct payments go electric	19
Airport report	8	Town centre Christmas round-up	20
Junior Citizen	10	Remembering the Balham bomb	22
Burntwood wins top prize	12	Get ready for winter	23
Videos lift the lid on burglary	14	HIV, Get checked out	24
New look leisure centres	15	What's On	27
Heritage photos for Christmas	16	Useful numbers	30





THE  
SCHOOLYARD  
WANDSWORTH



Buy now, move in by Christmas.  
Stunning new 1, 2 and 3 bedroom  
apartments in the heart of vibrant  
SW18 with London on your doorstep



To book a viewing at our marketing  
suite call **0844 406 9288** or visit  
**[www.theschoolyardsw18.com](http://www.theschoolyardsw18.com)**

A development by **L&O**

# Keeping standards high



**This month my fellow councillors and I will be discussing the residents' survey.**

For over 20 years we've been asking local people what they think about the services they receive, and this year's results are encouraging.

The vast majority of you – 87 per cent – are satisfied with the way the council is running Wandsworth – this compares with an average of 67 per cent for other UK councils. In addition 82 per cent of you think the council provides value for money, and nine out of ten think their neighbourhood is a good place to live. You are especially happy with the borough's parks and rubbish collection – 88 per cent and 84 per cent respectively think they are good. We have the challenge

of maintaining high standards at a time when our budgets are being cut. We have tried to save money in the way we are structured rather than reducing our front-line services, and the survey shows 61 per cent of you have not noticed any adverse effect.

In this issue of Brightside you can read about improvements to schools and leisure centres, town centre regeneration and additional homes and jobs.

We are working hard to encourage inward investment and help local people directly benefit from it. We think Wandsworth is a great place to live, and I'm glad so many of you agree.

**Cllr Ravi Govindia**  
Leader of the Council



## Have you applied for a **NURSERY PLACE** in a school?

**CLOSING DATE FOR APPLICATIONS IS 12 FEBRUARY 2016**

Contact the Family Information Service for more information on (020) 8871 7899 or email [fis@wandsworth.gov.uk](mailto:fis@wandsworth.gov.uk)



For more information visit [www.wandsworth.gov.uk/fis](http://www.wandsworth.gov.uk/fis)





# Concern over Crossrail 2 route

Wandsworth's transport spokesman Cllr Jonathan Cook has repeated the council's strongly-held view that Crossrail 2 should come to Tooting Broadway.

The new line will link south west and north east London and bring the tube network to Clapham Junction for the very first time. Until recently it incorporated plans for a new underground station at Tooting Broadway.

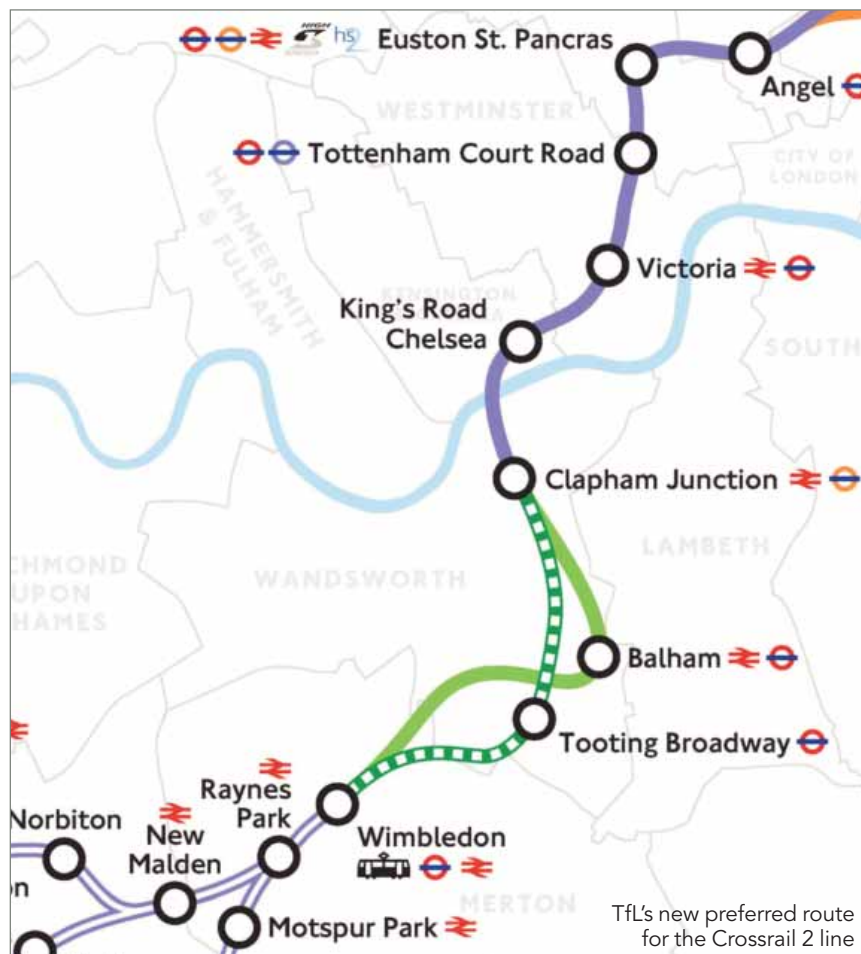
But Transport for London (TfL) is now considering an alternative route for the line – diverting it via Balham instead where it would still provide an interchange with the Northern Line. Its engineers say that geological conditions at the site currently earmarked for a new Tooting Broadway station are more complex than first anticipated. Whilst the Tooting option is still on the table, construction is likely to be more expensive and take considerably longer than originally thought.

Cllr Cook said the council will continue to push for the Tooting link, and if Balham is on the cards, will ensure residents and businesses get the information they need about how the scheme will impact on the town centre.

He said: "We remain convinced that the economic and social benefits of sticking to the original route are strong enough to outweigh and overcome any engineering challenges." Work is expected to start in 2020 and last ten years.

A public consultation on the revised route has now been launched by TfL.

[www.crossrail2.co.uk](http://www.crossrail2.co.uk)



## Have your say on transport

The Wandsworth Mobility Forum provides an opportunity for elderly and disabled people to talk about their experiences with transport in Wandsworth, and to meet transport providers and operators.

It will be in the town hall on December 3 at 1.30pm.

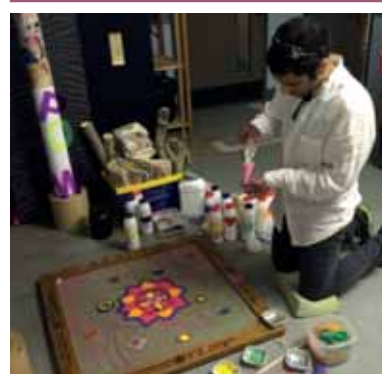
[020 8871 6293](tel:02088716293)

[jslaughter@wandsworth.gov.uk](mailto:jslaughter@wandsworth.gov.uk)

## Banham comes to Earlsfield

Leading security company Banham Group has opened its headquarters on a vacant brownfield site in Earlsfield.

The company's new offices, where 300 employees will be based, were officially opened by the Secretary of State for Work and Pensions, Iain Duncan Smith. The move to Earlsfield is expected to offer a major employment boost to young people in the area with the opening of a Banham Academy in January providing training within the security industry.



## Help out at Scrapstore

Tooting's Work and Play Scrapstore is looking for more volunteers.

The Scrapstore supplies donated clean and re-useable surplus waste materials to groups such as schools, charities and community groups that can use them for art projects. Items include fabric, card, buttons, wallpaper, carpet samples and much more.

[workandplayscrapstore.org.uk](http://workandplayscrapstore.org.uk)

To obtain a copy of Brightside in large print or audio version please telephone (020) 8871 7266 or email [brightside@wandsworth.gov.uk](mailto:brightside@wandsworth.gov.uk)

**Your Brightside**

Your Brightside is distributed by London Letterbox Marketing. We expect all copies of Brightside to be delivered to every home in the borough and pushed fully through the letterbox. It is produced by the council's corporate communications team. It is the only publication delivered to every household in the borough. We would like to thank all our advertisers for their support. Brightside will consider display advertisements from non-council bodies (excluding recruitment) and reserves the right to decline advertisements. The council neither accepts responsibility for the content of nor endorses any non-council advertisements.

- Editorial (020) 8871 8902
- Advertising (020) 8871 7266

If you have a comment about the magazine please telephone: (020) 8871 8902/6173 or email: [brightside@wandsworth.gov.uk](mailto:brightside@wandsworth.gov.uk). Brightside is printed on environmentally friendly paper, please recycle.



Volunteers at last year's event

## Make someone's Christmas Day

**More than 450 older people are expected to go to the Rotary Club of Battersea's Christmas Day lunch – now in its 53rd year.**

They are brought to and from a fully heated marquee in Battersea Park in a fleet of mini-buses and then enjoy a traditional Christmas lunch followed by entertainment, helped by more than 200 volunteers. If you are 65 or over,

live in Wandsworth and would like to come call (020) 8696 6540 or apply online at [rotarychristmasday.org.uk](http://rotarychristmasday.org.uk).

The day is free and depends on the generosity of local people and businesses. Send donations to [justgiving.com/RotaryChristmasDay](http://justgiving.com/RotaryChristmasDay) or send a cheque made out to The Rotary Club of Battersea Park to 61a Abbotswood Road, London SW16 1AL.

**SILVER BLOOMS**  
FRIENDSHIP, SUPPORT & PEACE OF MIND

- Fun social events
- Help from a club coordinator
- Vetted service providers
- Care planning
- Dementia therapy

**Join your club now!**  
Battersea, Balham, Clapham, Earlsfield, Putney, Southfields & Wandsworth Town  
0208 144 3460 [info@silverblooms.co.uk](mailto:info@silverblooms.co.uk) [www.silverblooms.co.uk](http://www.silverblooms.co.uk)

**OAKHILL PARK**  
PUTNEY

ONE AND TWO BEDROOM APARTMENTS AVAILABLE TO BUY THROUGH SHARED OWNERSHIP. THE AFFORDABLE WAY TO OWN

REGISTER YOUR INTEREST WITH US TODAY:  
☎ 020 3535 2533 • ✉ [mhsales@metropolitan.org.uk](mailto:mhsales@metropolitan.org.uk) • 🌐 [www.mhs.co.uk](http://www.mhs.co.uk) • 📱 @flythefirst

Logos for hm HOMEOWNERS, FIRST STEPS Home Ownership Foundation, Wandsworth, and Metropolitan Housing & Regeneration.



# Airport report 'flawed'

Hillingdon, Richmond, Wandsworth, and Windsor and Maidenhead councils have published a detailed assessment of the Airports Commission's final report, exposing a series of flaws and persistent bias.

The commission's report recommends expanding Heathrow. The Government is expected to respond by the end of the year. The local councils highlight the inflated economic case used to justify Heathrow expansion and the clear legal and environmental barriers to the project which are either misunderstood or underplayed.

Ravi Govindia, Leader of Wandsworth Council, said: " Heathrow is simply in the wrong place and there is no realistic prospect of overcoming the complex physical, legal and environmental factors that will always constrain its growth."

The council's full technical assessment and a high level summary booklet have been handed to all MPs ahead of a possible commons vote in the weeks ahead.

Read the reports online and sign up to the council's campaign:

[wandsworth.gov.uk/airports](http://wandsworth.gov.uk/airports)



## Landlords

### Looking for trouble-free letting?

- Guaranteed rent for the duration of the lease
- Rent paid direct to your bank account
- No management fees or commission
- Free professional management service
- Property leased for 3½ years

**We are looking for properties in the borough of Wandsworth and surrounding areas.**

For further information on this scheme and other letting opportunities, call us on (020) 8871 7333 or email [privatelandlords@wandsworth.gov.uk](mailto:privatelandlords@wandsworth.gov.uk)



AD1947 (9/15)





These local people got jobs through Work Match

# Getting Wandsworth people into work

**This month the council's Work Match team is offering training opportunities in construction, retail, hospitality and catering.**

The bespoke training courses are linked to the many jobs being created across the borough as rapid regeneration continues.

Several new high street retailers have moved into Wandsworth recently, and Work Match is currently recruiting for Debenhams, Decathlon, Sky, RUSH, Pandora and more.

Work Match is a dedicated council team matching local people with job opportunities, apprenticeships and training. So far it has helped more than 300 people out of unemployment and into new careers.

Wandsworth businesses can also use the free service to recruit a locally-based workforce. Getting help is easy – all you have to do is visit the website, send an email or give them a call, and a member of the team will talk you through the process.

[www.wandsworthworkmatch.org](http://www.wandsworthworkmatch.org)

[wandsworthworkmatch@wandsworth.gov.uk](mailto:wandsworthworkmatch@wandsworth.gov.uk)

(020) 8871 5191



securing jobs  
for local  
people

# Work Match



Sellincourt primary pupils quiz the commissioner

# Top cop visits Junior Citizen

**Met Police commissioner Sir Bernard Hogan-Howe paid a visit to the council's Junior Citizen scheme.**

The commissioner answered questions and chatted to the youngsters taking part in the programme, which is run twice a year and is offered to all the borough's Year 5 children.

Now in its 27th year, Junior Citizen has taught thousands of children how to cope with dangerous situations in

everyday life by making them act out different scenarios, including keeping safe in the kitchen, dealing with strangers, making a 999 call, avoiding live railway tracks, how to escape a fire, keeping safe around water and online safety. Junior Citizen is run by the council as part of an ongoing collaboration with the Metropolitan Police, London Fire Brigade, St John Ambulance, and British Transport Police.

[wandsworth.gov.uk/juniorcitizen](http://wandsworth.gov.uk/juniorcitizen)

## Want to vote for London's Mayor?

**Mayoral and London Assembly Elections are on 5 May 2016, and the EU referendum could also take place next year.**

If you want to vote in either, you must be registered. Households who have not responded to their annual voter canvass form must do so to guarantee their vote and avoid a £1000 fine.

Those who have recently moved, anyone renting their property and young

people are the least likely to be on the register. Using other council services does not automatically register you to vote.

**If you are not on the register, visit [gov.uk/register-to-vote](http://gov.uk/register-to-vote) straight away.**

British, Irish, Commonwealth and European Union citizens are all eligible to vote. Registering can also be beneficial to your credit rating.

To check if you are registered, contact the team:

**T** (020) 8871 6023

**E** [electoral@wandsworth.gov.uk](mailto:electoral@wandsworth.gov.uk)

**W** [wandsworth.gov.uk/vote](http://wandsworth.gov.uk/vote)

## Alton revival moves forward

The regeneration of the Alton area in Roehampton has moved a step closer after Wandsworth councillors unanimously backed new planning guidance for this part of the borough. The guidance, called a supplementary planning document, is based on the Alton Area Masterplan, which has been developed in close consultation with local residents, businesses and other organisations. All council tenants and owner occupiers who are directly affected by the regeneration scheme will have the opportunity to move to a new home in the development.

[wandsworth.gov.uk/roehampton](http://wandsworth.gov.uk/roehampton)

## Keeping people safe

Local Safeguarding Boards were established with the purpose of ensuring that agencies are keeping local children, young people and vulnerable adults safe. Read their annual reports and find out more at:

[wscb.org.uk](http://wscb.org.uk)

[wandsworth.gov.uk/safeguardingadults](http://wandsworth.gov.uk/safeguardingadults)

## Control your smoke

If you are planning to burn solid fuel, such as wood or coal in your fire-place, don't break the Smoke Control Order set up to prevent air pollution. You will need to ensure that it is an 'authorised fuel', commonly called a 'smokeless fuel', or that it is being burned in an appropriate 'exempt fireplace'. There are many exempt fireplaces available to buy. The council's website has more information about exempted fireplaces and authorised fuels.

[wandsworth.gov.uk/smokecontrol](http://wandsworth.gov.uk/smokecontrol)



# Sign up for new online service portal

You can now sign up for a brand new online services portal to view and manage your council tax accounts.

More online services are moving across to the new user-friendly 'My Account' portal in the months ahead so local people will also be able to manage their parking and benefits accounts all in one place.

Residents will just need to sign in to the new page for all the services, rather than having different logins for each one.

On the new site you can currently access the following council tax services:

- View your account and payments
- See your payment schedule
- View your council tax bill
- Register for online eBilling
- Apply for some discounts



Sign up for  
**WANDSWORTH**  
**24**  
**seven**  
[www.wandsworth.gov.uk/24seven](http://www.wandsworth.gov.uk/24seven)  
  
Weekly news straight to your inbox

## Council Tax Reduction HAVE YOUR SAY

The council is seeking your views on changes to its Council Tax Reduction scheme for 2016/17. The proposed changes went out to consultation on 19 October 2015.

Full details of the consultation are available on the council website at [www.wandsworth.gov.uk/ctsconsultation](http://www.wandsworth.gov.uk/ctsconsultation)

This includes a summary of the scheme and background information.

The consultation closes at midnight on the 12 December 2015, so please complete the online survey available from the link above. If you do not have online access, please call 020 8871 6700 for a paper survey.



# School wins top architecture prize



## **Burntwood School in Tooting has won the 2015 RIBA Stirling Prize.**

The Stirling Prize is awarded to the building that's judged to have "made the greatest contribution to the evolution of architecture over the past year". The school was extensively remodelled and rebuilt last year as part of a £40m improvement scheme.

Speaking at the awards ceremony, RIBA President Jane Duncan said:

"Burntwood School shows us how superb school design can be at the heart of raising our children's educational enjoyment and achievement."

The building works were carried out by construction firm Lend Lease with the design work led by Allford Hall Monaghan Morris (AHMM), whose website showcases the scheme.

The project was managed and overseen by Wandsworth Council.

This year Burntwood has also won a coveted Civic Trust Award and a top prize in the 2015 New London Architecture (NLA) Awards.

Principal Helen Dorfman said: "Staff and students have said on many occasions that the new buildings have greatly improved the quality of their day-to-day experiences at the school and students comment that their commitment to learning has been enhanced."



**Swaffield Primary School**  
Is a big school with a big heart; a place where children, staff, parents and governors work in harmonious partnership to develop a life-long love of learning in each child.



**Open Morning: Thursday 19<sup>th</sup> November at 9.15am**



**Swaffield Primary School, St. Ann's Hill,  
Wandsworth, London, SW18 2SA  
T: 020 8874 2825  
E: [swaffield@swaffield.wandsworth.sch.uk](mailto:swaffield@swaffield.wandsworth.sch.uk)  
[www.swaffield.wandsworth.sch.uk](http://www.swaffield.wandsworth.sch.uk)**

\* Pencil drawing by former pupil Michael Ockenden



Burntwood's new look library

© Tim Scar



# Recycle your way to £5k

The next Golden Ticket prize draw will be on December 18, so make sure you are in it for a chance to win the £5k jackpot.

Wandsworth people who recycle properly can enter a prize draw for a cash prize, plus the chance to nominate a community group to receive a £2,500 reward for their recycling efforts\*.

The Western Riverside Waste Authority (WRWA) processes the waste and recycling for four London boroughs, including Wandsworth, at Smugglers Way. It has been awarded a government grant to give people a bit of extra motivation to recycle correctly. Wandsworth has welcomed the Golden Ticket prize

draw, because every extra item recycled saves council tax payers' money.

You should have received a book of golden tickets through your door. All you have to do is fill in your details and pop one in with your clean and dry recyclables in a clear recycling sack or orange-lidded recycling bank. You can pick up extra tickets at your local library, leisure centre or the town hall.

Tickets found by staff at the Smugglers Way recycling plant will be put into a prize draw.

The first draw was in October, with three more draws in December, February and March.



\* Terms and conditions apply. To be eligible for nomination, community groups must register in advance and confirm that they encourage their members, supporters and/or other local residents to recycle correctly.

[wrwa.gov.uk/goldenticket](http://wrwa.gov.uk/goldenticket)

(020) 8871 2788

## WANDSWORTH Wellbeing Hub

**NHS**  
Wandsworth  
Clinical Commissioning Group

### Not sure where to go for help?

The Wellbeing Hub can put you in touch with organisations, self-help groups and activities available in the local community.

- Local services run by charities and community groups in Wandsworth
- Self-help groups
- Lifestyle services to help you with exercise, your weight or to stop smoking
- Self-management courses run by The Wandsworth Self-Management Service
- Educational courses to help manage your long-term conditions
- Psychological counselling for conditions such as stress, anxiety and depression

Find out more by calling **020 8812 6700** or visit [www.wandsworthccg.nhs.uk/hub](http://www.wandsworthccg.nhs.uk/hub)

Wandsworth PPI-Team    @NHSWandsworth



# Videos show both sides of burglary

**A former burglar and burglary victims have been speaking out to help stop others becoming victims of the crime.**

In what's believed to be the first project of its kind, Wandsworth Council's community safety team commissioned two films to tell both sides of the burglary story.

The films will be used to help householders learn potential pitfalls, and will be shown to potential burglars to help them understand how devastating the crime can be.

Stuart, a former burglar, explains how he would choose homes to target, and what tricks he would use to get into them. He has turned his back on crime and now wants to help make amends by showing people where the dangers lie so they can avoid them.

His tips include keeping car keys out of sight, fitting a good alarm and having secure windows and doors - burglars will avoid well-protected homes because they want to be in and out with as little risk as possible. He says a burglar will target a home with sash windows because they are much easier to break into than double glazing.

Hedges can also be a problem: "People put hedges up to hide their house, but it just helped me hide from someone across the road when I smashed a window to gain entry to a house," he said. In the other video three victims explain what happened to them, and describe their subsequent feelings of vulnerability, loss and anger.

[www.wandsworth.gov.uk/burglaryvideos](http://www.wandsworth.gov.uk/burglaryvideos)



**Stuart's story:** I got into burglary mostly because of my drug use. I didn't care what I was doing - I didn't have any emotions towards the people I was doing things to...and that hurts me a lot now."

**Anna's story:** Anna lost the computer she used to run her charity supporting people with cancer. "I wanted to take part in the video to show any potential burglars that burglary doesn't just affect the victim but has a wider ripple effect. By 2020 they estimate one in two of us will have cancer, so it could be their mum, sister or daughter who could no longer get support from me because my computer was stolen."



# New look for leisure centres

A re-opening ceremony has marked the £3.5m refurbishment of five of the borough's leisure centres.

**Latchmere's** fitness suite has been extended and the reception and changing rooms fully refurbished.

At **Putney** the village changing area has been modernised and a new sauna installed in the health suite.

**Balham leisure centre** has an improved reception area, a bigger dance studio, new poolside sauna and steam rooms, improvements to the weights room and changing room refurbishment.

**Tooting Leisure Centre's** village changing area has been fully refurbished, the health suite, sauna and steam rooms improved, changing rooms refurbished and the fitness suite and "spin studio" upgraded.

And **the Wandle** has been remodelled with upgraded male and female and accessible changing rooms.

The improvements were carried out as part of a new five year management



**Matthew Obilor** is a fitness manager and personal trainer at Latchmere. He said: "The customer feedback has been great. There is now more space and it feels really clean in here which people do appreciate."

contract awarded by the council to People for Places (PFP).

The council's leisure and culture spokesman Cllr Jonathan Cook said the £3.5m spent on improvements show the council's commitment to giving resi-

dents the best possible facilities:

"PFP Leisure have shown tremendous commitment to improving the council's leisure centres by investing money in equipping and improved facilities. All these upgrades have been delivered on time and on budget."

"This investment is having the desired result. Wandsworth's facilities are amongst the best used in the country with over 3.4 million visits per year."

An independent review has recently graded Roehampton, Wandle, Tooting and Balham Leisure Centres as 'good', while Latchmere and Putney have been upgraded to 'excellent', which puts them amongst the top scoring sites in the UK. The review was carried out by Quest, which sets performance benchmarks for the leisure industry.

[www.wandsworth.gov.uk/leisurecentres](http://www.wandsworth.gov.uk/leisurecentres)



**Rebecca Asling** and daughter **Evie** live in Balham. She said: "I am really impressed with the new flooring in the swimming pool changing rooms. We have a swim first, then we come up here for lunch and some fun. I think this is the best this centre has ever looked."

## Carers' AGM

The Wandsworth Carers' Centre annual general meeting will be on November 18 at Earlsfield Library and will include a talk on dementia awareness. ☎ (020) 8877 1200

## Alf Jessiman

Councillors have paid tribute to former Mayor of Wandsworth Alf Jessiman who has passed away. Mr Jessiman served on the council from 1978 to 1994, representing the Conservative party in Furzedown Ward. He was Mayor of Wandsworth from 1986 to 1987 and Deputy Mayor from 1982 to 1983.

## Talk to regeneration team

A new office at 10 Lavender Road will make it easier for people living on the Winstanley and York Road Estates to talk to the regeneration team about plans for the area. Contact them to make an appointment at:

☎ (020) 8871 6802

✉ [winstanleyorkroad](mailto:winstanleyorkroad@wandsworth.gov.uk)

@wandsworth.gov.uk



## Putt in the park

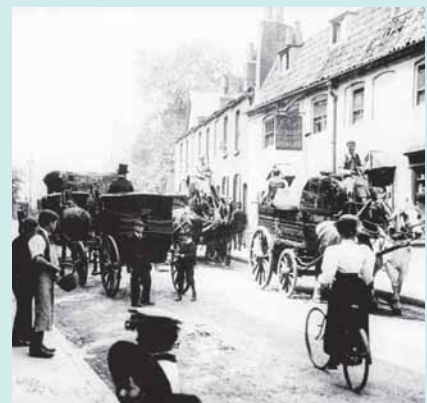
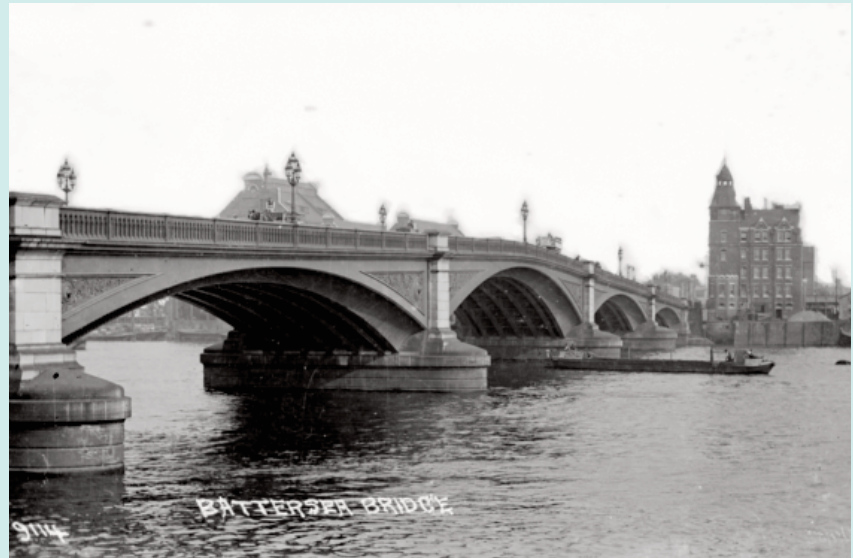
Families can now enjoy a fun-packed round of mini-golf right in the heart of Battersea Park. The new 12 hole "Putt in the Park" features a dozen landscaped putting greens complete with, water features and other obstacles to provide a challenging round of mini golf. There is also a newly refurbished café with a wood-fired pizzeria (pictured above).

🌐 [puttinthepark.com](http://puttinthepark.com).

# Give a piece of history

Looking for an unusual Christmas present? The borough's Heritage Service, provided by the council's contractors GLL, has launched a new online sales site where you can search for old pictures of the borough and order your own high-quality print.

🌐 [boroughphotos.org/wandsworth](http://boroughphotos.org/wandsworth)







## UP! Tileman House, Putney, SW15

(Launching Autumn 2015)

1 & 2 Bedroom Apartments  
Prices: TBC

Ideally located on Upper Richmond Road in Putney, within walking distance of Putney National Rail & East Putney Tube, and moments away from the bars, shops and restaurants of Putney High Street.

## Arcadia at Riverside Quarter

(Launching Autumn 2015)

1 & 2 Bedroom Apartments  
Prices: TBC

On the bank of the River Thames, within walking distance of both Putney & Wandsworth Town Centres.

## Aura House, Balham, SW12

(Launching Early 2016)

1, 2 & 3 Bedroom Apartments  
Prices: TBC

Located on Balham Hill, within minutes of Balham town centre, with its wide range of independent bars, coffee shops and restaurants. 10 minutes from Clapham South underground station.

## Riverlight, Nine Elms, Battersea

(Launching Early 2016)

1 & 2 Bedroom Apartments  
Prices: TBC

Part of London's largest regeneration at Nine Elms, Riverlight is ideally located to take advantage of the proposed shops, restaurants, bars and parks and the Northern Line extension due 2017.

All development images above are computer generated images.

For more information and to register your interest contact our sales team:

**0800 012 1442**

[sales@viridianhousing.org.uk](mailto:sales@viridianhousing.org.uk)  
[www.wandsworthsharedownership.co.uk](http://www.wandsworthsharedownership.co.uk)

**FIRSTSTEPS**  
to home ownership in London

THE BRIGHTER BOROUGH  
**Wandsworth**

# Share a social life

People with learning disabilities can make the most of what London has to offer with a new scheme that supports them to have an active social life.

Share Community is a charity that provides training and employment support for adults with disabilities and mental health needs. Its work includes a training and therapy garden in Battersea Park.

Share Go Anywhere, Do Anything is a new project in which volunteer social buddies support people to explore theatres, nightclubs, museums, bars and restaurants – or any aspect of London's social life that takes their fancy.

People can be referred by their parents, carers or social and health care professionals – or you can refer yourself. The only criteria is that you have learning disabilities.

[sharecommunity.org.uk/independent-living-wellbeing/go-anywhere-do-anything](http://sharecommunity.org.uk/independent-living-wellbeing/go-anywhere-do-anything)



Harish and his buddy Chloe



## Protecting Tooting buildings

The council has taken the first steps towards the compulsory purchase of Grade II listed Gardener's Lodge in Tooting Bec Road after the owner failed to carry out urgent repairs. The lodge dates back to the early 19th century.

Members of the planning committee have also refused to grant planning permission for a revised development scheme that would have seen The Tooting Constitutional Club (pictured above) at 111-113 Tooting High Street replaced with homes and offices. The building itself was built in around 1730 and is one of only a few which date back to the time when Tooting was still a small Surrey village.

The Royal Hospital for Neuro-disability (RHN) is a non-profit medical charity, based in Putney, South West London. We provide short and long-term services (assessment, rehabilitation, and disability management) for adults with profound or complex disabilities resulting from damage to the brain or nervous system. Through these services, we seek to enable people with profound neuro-disability to enjoy the best possible quality of life.



## Develop your career in Neuro-rehabilitation at RHN and you will gain valuable skills and experience

We are currently recruiting **Registered Nurses** for a number of exciting opportunities across our range of services and we would welcome your application.

We are also recruiting **Bank Staff Nurses**. If you are a registered nurse and you are looking for flexible working hours please apply today.

In addition, we offer a good work-life balance and a number of benefits including - optional private health-care scheme, access to a number of health & well-being services including physiotherapy, counselling, on-site yoga, free on-site parking, on-site accommodation, a subsidised staff restaurant, café and coffee shop, a professional library, child-care voucher scheme, free eye-sight tests, and a generous staff pension scheme.

Please visit our website for more information on our hospital and the roles we have available [www.rhn.org.uk](http://www.rhn.org.uk). Alternatively please contact Marta Cieslak on **0208 780 4500 Ext. 5003** or by emailing [recruitment@rhn.org.uk](mailto:recruitment@rhn.org.uk) for an application pack.



# Having their say

**Disabled people have helped shape the services that could be on offer to them in the future.**

Around 200 people with physical disabilities and visual or hearing impairments were asked about their experience of living in Wandsworth, what is important to them and what improvements they would like. Their feedback has fed into a new strategy produced by Wandsworth Council and Wandsworth Clinical Commissioning Group (CCG) called *My Way: My Say* setting out a vision and objectives for 2020. It covers six areas:

- Getting the best start in life;
- Making choices and being in control;
- Living healthy and independent lives;
- Living in an inclusive community;
- Obtaining financial and non-financial benefits.



**My Way: My Say** is a framework within which the council and CCG can plan services going forward. It covers children, adults of working age and older people who have physical disabilities or visual and hearing impairments.

It was launched at this month's Your Day: Your Say conference, which focused on one area of the strategy – increasing choice, control and independence through taking direct payments and employing a personal assistant to meet care needs.

[www.wandsworth.gov.uk/acis](http://www.wandsworth.gov.uk/acis)

## New card makes Direct Payments easier

**The new Direct Payment prepaid card is now available.**

Direct Payments enable people to have a greater say in the social care they receive by giving them access to their own personal budget.

The prepaid electronic card is provided free of charge by Wandsworth Council and Prepaid Financial Services Limited (PFS) and will help to simplify people's direct payment service.

Prepaid cards are loaded with the agreed direct payment funds and the card acts like a debit card to buy goods and services detailed within an agreed support plan. People will be able to pay for goods and services up to the value that is loaded onto the pre-

paid cards - it cannot be used as a credit card. This service also applies to carers who are eligible for an on-going direct payment.

**The benefits:**

- It is easy to manage and view your card status 24 hours a day, 7 days per week
- It is easier to use to pay for goods and services to the value that is loaded onto it (Payments will be declined should there be insufficient funds)
- People will not need to have a separate bank account
- If a person has been financially assessed as needing to make a contribution, they can pay their contribution onto their card from their own bank account by setting up a regular payment or standing order
- If a person's service is provided by an agency or their own personal assistant, they will be able to pay them online, from their prepaid card account

The council's Brokerage and Direct Payments Team will be managing the prepaid card service, including arranging the issuing of cards, through to monitoring transactions. If you have any questions call the team on [020 8871 7676](tel:02088717676).





# It's (nearly) Christmas!

**Don't bother going up to town for your Christmas shopping – there's loads going on right on your doorstep**

The borough's town centres will be holding lights ceremonies and other festive events. Here are the highlights:

**Wandsworth Town's** ceremony is on November 28. Highlights include a lantern parade from West Hill School to All Saint's Church, craft workshops in Southside, story-telling and a roving Santa in the library, entertainment in Southside from the South Thames College Music School and singers from the National Opera Studio, and a Radio Wandsworth roadshow outside TK Maxx, plus stalls and street food.

The lights will be switched on at 4.20pm by the Mayor of Wandsworth, followed by a service at All Saints' Church.

The **Northcote and Webb Road** Christmas Market will be November 28 from 11am to 6pm, including carol singing, children's activities, street food and gift stalls. The Northcote Road lights will be switched on at 5pm on November 27.

The **Battersea Square** lights switch on is on December 1 at 7pm.

Get festive in **Balham** on November 29 in Hildreth Street market and Balham Hill, including food and gift stalls and carol singing. The lights will be switched on at 5.30pm.

**Earlsfield** ushers in the festive season on November 26. Go to St Andrew's Church, at the junction of Waynefleete Street and Garratt Lane from 4pm.





Go along to **Southfields** Station from 5pm on December 2 to see the lights go on and hear carols by local primary school choirs.

For **Tooting's** festivities on December 3, go along to Church Lane, outside St Nicolas Church, where the mayor will flick the switch at 4pm. There will also be carols and mince pies.

**Putney** festivities will be on December 4, featuring a Christmas Market from 2.30pm to 8pm in Church Square. Santa's Grotto will be open from 10.30am to 4.30pm, along with live music and performances. The lights will be switched on at 6pm. The market and grotto will be back on December 5 as part of Small Business Saturday.

**Putney** Christmas Art Market will be on the Embankment near Putney Pier on December 6, featuring more than 40 artists and craftspeople offering original, quality work.



## Small Business Saturday

Wandsworth's businesses will again be taking part in Small Business Saturday on December 5, tempting local shoppers with special offers, events and promotions. Local businesses can get advice on making the most of the festive season at the Small Business Saturday Bus Tour on November 20.

Go along to Hildreth Street market between 1.30 and 3.30pm to grab your seat on the bus.

[www.wandsworth.gov.uk/smallbusinessaturday](http://www.wandsworth.gov.uk/smallbusinessaturday)



Business spokesman Cllr Guy Senior with a Hildreth Street trader at last year's event.

## Sick and tired of feeling sick and tired?

Do you have a long-term health condition? Or are you caring for someone with a long-term health condition? Would you like to learn more about how you can manage your health and wellbeing using self-management techniques? If so, why not attend a free self-management course today, provided by your local NHS.

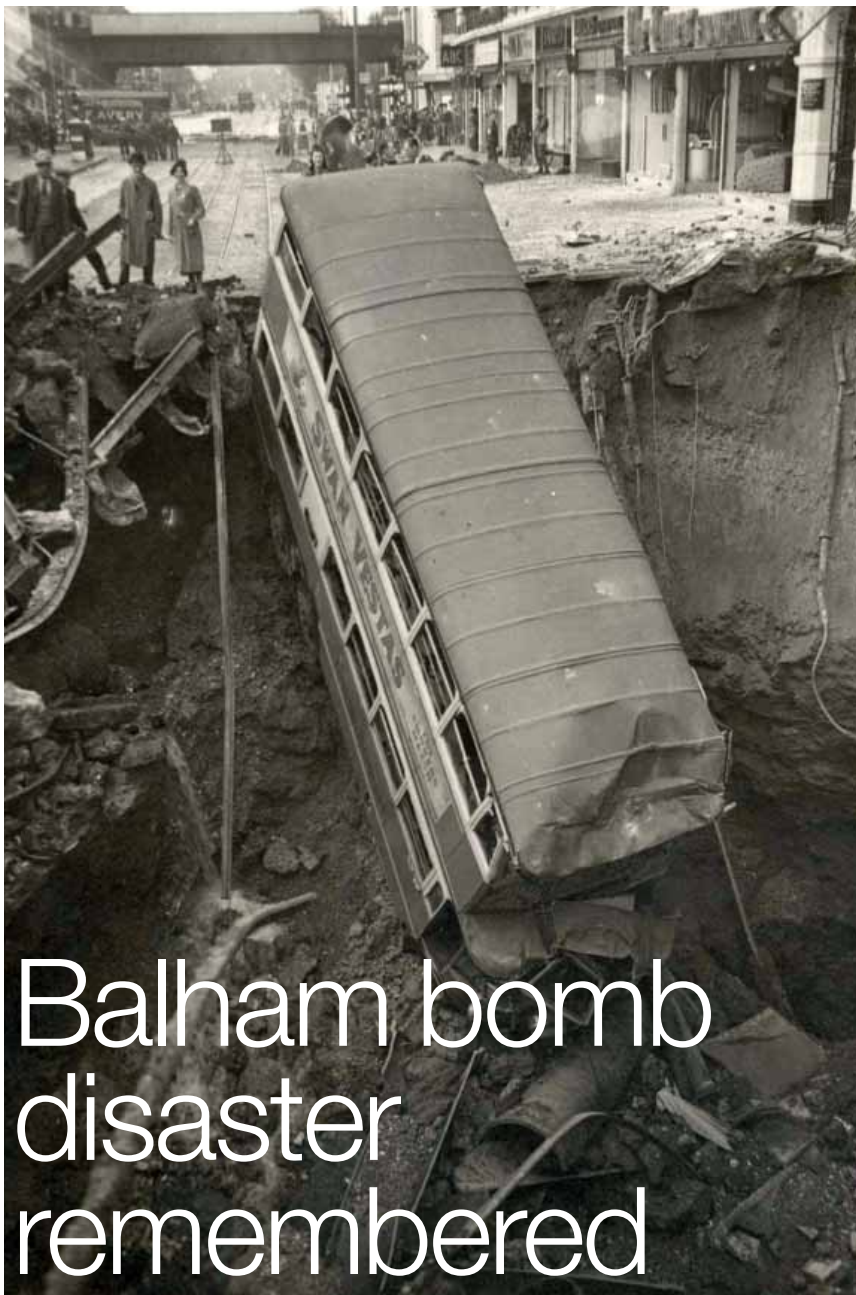
- The Expert Patients Programme (EPP) is a six week self-management course for anyone living with any long-term health condition.
- The New Beginnings (NB) course is based on the EPP and has been specifically adapted for people living with, or who are in recovery from, a mental health condition.
- The Looking After Me (LAM) course is aimed at carers. The course focuses on helping you make time to look after your own health needs.



For more information and advice about all of our FREE courses, please call: 020 8812-6750 or email us on [expertpatients@wandsworthccg.nhs.uk](mailto:expertpatients@wandsworthccg.nhs.uk) Alternatively visit our website: [www.wandsworthccg.nhs.uk/selfmanagement](http://www.wandsworthccg.nhs.uk/selfmanagement)

**WANDSWORTH**  
SELF-MANAGEMENT

**NHS**  
Wandsworth  
Clinical Commissioning Group



# Balham bomb disaster remembered

**A series of commemorative events were held at Balham Tube Station to mark the 75th anniversary of a tragic wartime bomb blast.**

Representatives from London Underground and the Salvation Army joined the Mayor of Wandsworth, Cllr Nicola Nardelli, and pupils from local schools to pay their respects.

At 8pm on October 14, 1940 a 1,400kg bomb fell on Balham High Road forming a large crater in the road which fractured the gas, water and sewer mains.

Thousands of gallons of water and sewage flooded into Balham Tube Station, where hundreds of people

were taking shelter as aircraft bombed London. Six hundred people were rescued but the disaster claimed the lives of more than 60, including some London Transport staff on duty.

Last month's commemorative events at the station included staff paying their respects on the platform at the time the bomb struck.

There was also a lunchtime reading by children's author Barbara Mitchelhill from her novel *Billy's Blitz*. Pupils from local schools, including Hornsby House and Holy Ghost Catholic Primary School, listened to a passage from the book which vividly describes life in Balham during the Blitz.

“ It is important that we never forget the devastating loss suffered by the people of Balham 75 years ago ”



Jelil Ladipo, Station Supervisor, Balham Tube station, Cllr Nicola Nardelli, Mayor of Wandsworth and Simon Cook, London Underground Area Manager

Mayor of Wandsworth Cllr Nicola Nardelli said: “It is important that we never forget the devastating loss suffered by the people of Balham 75 years ago when so many men, women and children people lost their lives in this tragic wartime disaster. I was honoured to be joined by so many young people from our local schools in commemorating this anniversary.”

[wandsworth.gov.uk/wartimevoices](http://wandsworth.gov.uk/wartimevoices)



Pupils from Holy Ghost Catholic Primary School learn about the history of the Balham Tube Station disaster.





# Get ready for winter

## Ten tips for keeping warm, healthy and safe

- 1** Have a flu vaccine. They are available from your GP or some pharmacies.  
[nhs.uk/flu](https://www.nhs.uk/flu)
- 2** Plan ahead – check your electric blanket is safe, make sure you have enough of your prescription medicine and stock up on tinned, dried and frozen food in case you can't get out in bad weather.
- 3** Wear layers – several layers of thin clothing will keep you warmer than one layer of thick clothing and tuck curtains behind radiators – it helps keep the heat in.
- 4** Have hot meals and drinks – they will help keep you warm – and keep moving as much as possible.
- 5** Try to keep your home to a minimum of 18C (64F) which is the safe level for your health.
- 6** Vulnerable people can sign up for the UK Power Networks free priority register. This will mean you get help quickly during a power cut.  
[ukpowernetworks.co.uk](https://www.ukpowernetworks.co.uk)
- 7** Download the Keep Warm Keep Well leaflet for more tips.  
[wandsworth.gov.uk/keepwarm](https://www.wandsworth.gov.uk/keepwarm)
- 8** If it is snowy or icy the council will grit roads and pavements, but you can also do it yourself. Find out how, and see the locations of your neighbourhood grit bins. [wandsworth.gov.uk/snow](https://www.wandsworth.gov.uk/snow)
- 9** Cold weather increases the risk of heart attacks, strokes, breathing infections and falls. If the weather turns cold, keep an eye on elderly neighbours or family members.
- 10** Find out how to avoid damp and mould and get tips on heating and insulation at [wandsworth.gov.uk/damp](https://www.wandsworth.gov.uk/damp)

Contact WHARF (Wandsworth Housing Adaptations and Repairs Forum) for information, advice and support about how to stay warm this winter. ☎ (020) 3198 8945

✉ [info@wandsworthwharf.org.uk](mailto:info@wandsworthwharf.org.uk)  
[www.wandsworthwharf.org.uk](https://www.wandsworthwharf.org.uk)

The council's adult social services team will also be supporting vulnerable people this winter.

☎ (020) 8871 7707.

The council has a cold weather plan, that explains what roads and pavements are gritted and when. Read it at [wandsworth.gov.uk/snow](https://www.wandsworth.gov.uk/snow).

Neighbourhood Watch co-ordinators can collect up to 50kg of rock salt from the council depot at Frogmore, Wandsworth on November 14 and 21.

☎ (020) 8871 6749 for details.

National HIV Testing Week November 21-28

# Get checked out

**Wandsworth residents are urged to get themselves tested during national HIV Testing Week.**

The council's public health department is supporting the Terrence Higgins Trust's 'It Starts With Me' campaign to help reduce the number of new HIV infections and make sure people who need help get it as soon as possible. People most at risk include those from black African backgrounds, and gay,

bisexual, or heterosexual men who have sex with men, or anyone who has had recent unprotected sex.

Wandsworth Council's director of public health Houda Al-Sharifi, said, "Knowing your HIV status is the key to both effective treatment, and to preventing onward transmission – both important reasons why we are promoting the National HIV Testing Week."

The majority of people who have the



test for HIV find out that they do not have the virus. However, you can have HIV and not know it, which means testing yourself early and regularly is important.

Where a test result does show that a person is infected, the earlier they find out, the earlier they can receive full confidential support, care and treatment. This means that they will be far more likely to live a long, healthy, and fulfilling life than those who do not find out that they are infected until a later stage.

Wandsworth Council will also be supporting World AIDS Day on 1st December 2015 to raise awareness and show support for people living with HIV.

## How to get the test

**Visit [swish.nhs.uk](http://swish.nhs.uk) for details of clinics in the borough that can give you a free, fast and confidential HIV test with results in 15 minutes.**

You can also now order free, convenient, confidential HIV sampling kits through the post. Take the simple test, send it off in the post, and receive your results by phone from a confidential clinical service. Visit [swish.nhs.uk](http://swish.nhs.uk) to find out more and order your kit.

If you have any questions about HIV Testing Week or World AIDS Day, email [sexualhealth@wandsworth.gov.uk](mailto:sexualhealth@wandsworth.gov.uk)



# Man MOTs Have you had yours?

**Hundreds of men across the borough have been getting their own personal health MOTs in all kinds of surprising venues!**

The team have recently been spotted at Roehampton University fresher's fair, the Battersea SW11 festival, and most recently in a pop-up shop on the Ashburton Estate. Men have been queuing up to check their blood pressure, have their BMI measured or just have a confidential chat with the team of nurses about any thing that's been bothering them.

Eddie Williams, one of the Nurses, said: "We have seen a number of men who put their family and work before their own health. A lot of younger men think they are superman and that "it would never happen to me" but just yester-

day we had a young lad in with worryingly high blood pressure who has now been referred to his GP for a check up." The Man MOTs are part of the council's drive to address inequalities in health between men and women. To find out the next venue at which the Man MOT

team will be appearing, to have an online chat with a GP now, or to learn about the other options you can take visit [www.wandsworthman.net](http://www.wandsworthman.net)

An online Man MOT chat service is available and you can get advice via email or chat directly to a GP.



## Get a **MAN MOT**

**Men - got a niggling health worry  
but don't want to visit your doctor?**

**Have a *CONFIDENTIAL* online chat with a GP  
chat for free 24/7 [www.wandsworthman.net](http://www.wandsworthman.net)**

Wandsworth **MAN**  
be good  
to yourself

THE BRIGHTER BOROUGH  
Wandsworth





## Cooking up a storm

The third annual Wandsworth Young Chef of the Year competition has been launched.

The inter-school competition nurtures young talent, teaches young people how to cook good healthy food to a budget, provides a chance to learn from the experts and helps young people get a foothold in the catering industry.

The competition is run by the Mayor of Wandsworth and the council's public health team. Between now and Christmas schools will hold 'cook-offs' to choose their finalists, who will compete next spring. All the finalists will receive extensive support and mentoring from chefs at major catering company Compass. Executive Chef of Compass, Nick Vadis (pictured above), went along to the launch at Burntwood School to chat to youngsters.



## Big-hearted Wix

Staff and students at Wix School have donated six barrels of clothes to Syrian refugees in Greece. As well as donating the clothes and shoes all bagged up for individual children per age and gender, they raised hundreds of pounds to pay for the items to be shipped.



*Our expertise at your service!*

TEL: 0207 81 99 555  
[www.gsfmotorworks.com](http://www.gsfmotorworks.com)  
[info@gsfmotorworks.com](mailto:info@gsfmotorworks.com)  
 BATTERSEA - SW8 3QR

**Your car is part of your property.  
 We take care of it as such.**



**MOT  
 SERVICING  
 BODYWORK**

# what's on?

EVENTS FOR NOVEMBER 2015  
TO MARCH 2016



## Wednesday November 11

### St Joseph's Christmas Fair

Stalls selling food, drinks, cakes, jams, fancy goods, books, toys, household items, CDs, and a great deal more. To satisfy all your Christmas present needs.  
St Joseph's Church, 218 Roehampton Lane, SW15

## Thursday November 12 1-4pm

### Gaining Members and Momentum

Find out more about Self Help: the tools, platforms and support available for publicising a group and attracting new members. All welcome.

Lifetimes Charity at Penfold Community Centre, SW18 4TJ.

To take part, book your space at: [www.eventbrite.co.uk](http://www.eventbrite.co.uk) and search 'Wandsworth self help'

## Tuesday November 17 10am - 3:30pm

### Asperger's Males 16+ Workshop (Living with Asperger's)

Specialist ASD Needs Advisor, Mark Brown, with

over 30 years of experience working with special needs in children and adults, will focus on recognising, supporting and offering the relevant support for young Asperger males. Two young local men will share their experience living with Asperger's. The workshop is useful for anyone to learn about Asperger's, there will be a Q&A at the end.  
Tooting United Reformed Church, Rookstone Road, SW17  
[www.eventbrite.com](http://www.eventbrite.com) and search 'Aspergers'

## Saturday November 21 11am - 2pm

### Parish of Putney Christmas Fair

There is something for

everyone including games, crafts, face painting, toy and bottle tombolas, food and a raffle full of fantastic prizes.

**Admission free**

All welcome.  
St. Mary's Church, Putney Bridge, SW15

## Saturday November 21 11.30am-3pm

### St Paul's Christmas Fair

St Paul's Community Centre, 23 Inner Park Road, SW19

**Admission: 50p wheelchair**

## Saturday November 21 7.30pm

### WSO autumn concert

Programme: SIBELIUS Karelia Suite; SIBELIUS Finlandia; SHOSTAKOVICH

Symphony No.5. **Tickets £12, concessions £8, children under 16 free**

Church of the Ascension, Lavender Hill, Battersea, SW11. Buy tickets online: [www.wandsworthsymphony.org](http://www.wandsworthsymphony.org)

## Saturday November 28 12.30-3.30pm

### St Margaret's Christmas Fair

Jewellery, gifts, Christmas decorations and cards, Santa's grotto. **Entry 50pm adults, children free**

St Margaret's Church, Putney Park Lane, SW15 **wheelchair**

## Saturday November 28 7.30pm

**Concert: Monteverdi Vespers**

### How to be listed

Send details (including access for people with disabilities) by Monday February 22 to: [whatson@wandsworth.gov.uk](mailto:whatson@wandsworth.gov.uk)  
We cannot guarantee that your entry will be inserted. This is a free service. The information in this guide has been provided by the advertisers themselves. Wandsworth Council accepts no responsibility for the accuracy of the information or for any event not organised by the council.

Children's events outlined in yellow



# what's on?

EVENTS FOR NOVEMBER 2015  
TO MARCH 2016

For ticket prices and other details see website.

Part of St Luke's Music Society at St Luke's Church, Thurleigh Road, SW12. Box office 07951 791619.

**wheelchair**

## Monday November 30 8-10pm

### **Sweet is the song, beautiful the words**

Catherine Bott, the soprano, baroque specialist and Classic FM presenter, talks to Ian Partridge about balancing a performing, academic and broadcasting career.

**Members and young people free, visitors £5**  
Dryburgh Hall, Putney Leisure Centre, SW15  
[www.putneymusic.org.uk](http://www.putneymusic.org.uk)

## Tuesday December 1 10.30am – 12.30pm

### **SEN parenting workshop**

Free workshop for parents, carers, family and friends to acquire an in-depth understanding of their child's special needs. Tooting United Reformed Church, Rookstone Road, SW17  
[www.eventbrite.com](http://www.eventbrite.com) and search 'a 2nd voice'

## December 1-12 8pm

### **Comedy: Jackson's Way**

Perrier comedy award-winning set. **Tickets £12**  
BAC, Lavender Hill, SW11. [www.bac.org.uk](http://www.bac.org.uk)  
Box office 7223 2223.

## Wednesday December 2 10am

### **Dance classes for women**

Weekly class to get fit, develop core strength, flexibility and rhythm. We learn urban dance to popular, empowering music. You can bring your baby to play in our play area which is set up within sight and reach of the dance space.

Eastwood Children's Centre Hall, 166 Roehampton Lane, SW15. Contact Kiri 07508 036180  
[Kiripalmer8@gmail.com](mailto:Kiripalmer8@gmail.com)

## Saturday December 5 10am-1pm

### **Community Christmas Fair**

Stalls, superb homemade cakes and a tasty sample of what's on offer at our community café. Raffle, special activities for children, and even a chance to meet Father Christmas before he gets really busy. St Andrews Church, Garratt Lane, Earlsfield, SW18

## Saturday December 5 11am-4pm

### **Green and Ethical Christmas Fayre**

Great selection of ethically sourced and environmentally friendly Christmas gifts and essentials. Visit Father Christmas in his grotto and take a break in the Green Cafe. **Adults £2, children free**  
Holy Trinity Church, Clapham Common Northside, SW4  
[www.greenethicalchristmas.com](http://www.greenethicalchristmas.com)

## Saturday December 5, 12-3pm

### **All Saints Tooting Christmas Fair**

Start the Christmas season early with Santa's Grotto, a bouncy castle, Christmas gifts, a hot buffet lunch, carols and organ music. **Entrance 50p for over 16s**  
Brudenell Road, SW17 (Corner of Franciscan Road)



## Saturday November 28

### **The Saturday Art Club**

9:30-11am: Art & Performance art, making and performance, exploring making costumes, characters, sets and creatures to role play and create visual story telling. A fun way to build self confidence. For 3-6 years.

11am-1pm: the Art Club individual and themed projects, mixed media techniques and drawing skills, portfolio preparation for secondary schools, GCSE and art coursework, 1:1 tutoring available. For 7-16 years. Wandsworth Common Nature Study Centre, SW18 3RT  
Contact 07775781332 [artimatelondon@gmail.com](mailto:artimatelondon@gmail.com)  
**wheelchair**

[www.allsaintstooting.org.uk](http://www.allsaintstooting.org.uk)  
**wheelchair**

## Saturday December 5 2-5.30pm

### **Gluten Free Christmas Fair**

Food stalls, café, and competitions to raise awareness about coeliac disease and to help meet the dietary needs of children and adults who have to follow a lifelong gluten free diet. Everyone welcome.

Coeliac UK at St Barnabas Church Hall, 146 Lavenham Road, SW18

## Saturday December 5 7pm

### **Elgar's Dream Of Gerontius**

Performed with full orchestra and soloists. With conductor Christopher Braime.

**Tickets £16, concessions £13, includes refreshment and programme.**

Putney Choral Society at St. Paul's Church, Augustus Road, Southfields, SW19  
[www.putneychoralsoc.org.uk](http://www.putneychoralsoc.org.uk)  
Tickets contact Shirley 07968209245 or on the door.

## Sunday December 6 4.30pm

### **Carol concert and inspirational music**

**Entry £5**  
East Hill United Reformed Church, SW18

## Monday December 7 10.30am

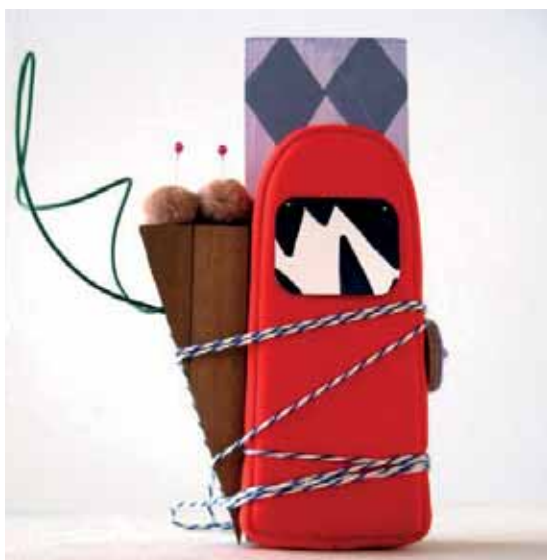
Pantomime 'The Snow Queen'

**Entry £4**  
East Hill United Reformed Church, SW18

## Tuesday December 8 2-4pm

### **Monthly open meeting**

With speaker Jane Ellison MP (TBC) together with jollity and mince pies. Wandsworth Older People's Forum Anchor Centre, 273 Garratt Lane,



## November 19 – December 13

### **Exhibition: Things we didn't have before**

For the gallery's third annual open call exhibition the venue transforms into a cabinet of curiosities. **Free**  
Pump House Gallery, Battersea Park, SW11. Call 8871 7572. [www.pumphousegallery.org.uk](http://www.pumphousegallery.org.uk)

SW18. [www.wandpensforum.org.uk](http://www.wandpensforum.org.uk)  
**wheelchair, loop**

### Thursday December 10 7.30pm

#### Christmas Concert

Carols led by the South West Songbirds and the Putney Treblemakers sprinkled with readings from some of STEM4's young supporters.

Followed by mince pies and mulled wine in the church hall. **Tickets £12 adults, £8 children**

STEM4 at St Mary's Church, 13 Church Path, SW19 [www.stem4.org.uk](http://www.stem4.org.uk)

### Saturday December 12 4.30pm

#### Merton concert band

Entry by donation to the retiring offertory. East Hill United Reformed Church, SW18

### Monday December 14 7.15pm

**It will never show: designing historical costumes for film and television**

**Visitors £10**

SWLDFAS at Dryburgh Hall, Putney Leisure Centre, Dryburgh Road SW15

**Disabled access: There is a lift to hall level but no ramp from the car park. Call venue for information.**

### Thursday December 17 6.30pm

#### Christmas concert

In aid of Gutsy Gastros, supporting children and teens with lifelong, life-threatening and life-limiting bowel conditions. **Adults £5, children £2.50, under-3s free - tickets on the door.**

Southwest Songbirds at St Andrews Church, Garratt Lane, SW18 [www.southwestsongbirds.co.uk](http://www.southwestsongbirds.co.uk)

### Saturday December 19 12 - 3.30pm

#### A2ndvoice Christmas Party

Christmas party for families and friends with ASD children to come together. Arts and crafts, board games and other activities.

Tooting United Reformed Church, Rookstone Road, SW17

[www.eventbrite.com](http://www.eventbrite.com) and search 'a 2nd voice'



### Saturday November 28 11.30am-2.30pm

#### Magical Christmas Fair

With up-and-coming magician Andrew Farmer as well as Father Christmas! Other attractions include a grand raffle, gift stalls, Christmas puddings, home-made cakes, toys, books and delicious lunches.

**£1 entry, children free**

St Barnabas Church, Lavenham Rd, Southfields, SW18 [www.stbarnabas-southfields.org.uk](http://www.stbarnabas-southfields.org.uk)



### Monday December 21 12-4pm

#### Kids' Christmas Movie & Dance Party

Kids eat packed lunch provided by venue watching film Elf, then play Christmas-themed games and a funky Christmas Disco. **Cost: £25 per child for tickets purchased before 10 December, £30 per child thereafter.**

Suitable for children aged 5 to 14. The Half Moon Putney, 93 Lower Richmond Road, Putney, SW15 For more details or to book, please contact Emily 07956 235 248 or [emily@dancegrooves.dance](mailto:emily@dancegrooves.dance).

### Monday January 18 8-10pm

#### Hallé of Fame

The conductor, Sir Mark Elder, Music Director of the Hallé Orchestra, talks about working with musicians in the concert hall and in the opera house. **Members and young people free; visitors £5**

Dryburgh Hall, Putney Leisure Centre, SW15 [www.putneymusic.org.uk](http://www.putneymusic.org.uk)

### Friday January 29 8pm

#### Talk: 6th Nick Fuentes Memorial Lecture

Wandsworth Historical Society, Friends Meeting House, 59 Wandsworth High Street, SW18. Non members welcome. Call 8874 6341. Email [nngrobson@tiscali.co.uk](mailto:nngrobson@tiscali.co.uk) [www.wandsworthhistory.org.uk](http://www.wandsworthhistory.org.uk)

### Saturday January 30 1-5pm

#### Table top sale

**If you wish to book a table the cost is £10**



### Sunday December 6 11am-4pm

#### Putney Pier art market

Christmas-themed market with fabulous original and unique pieces for Christmas. Putney Embankment SW15. Twitter: @pierartputney

Penfold Centre, 1 Neville Gill Close, SW18. Email [uwa.onyike@outlook.com](mailto:uwa.onyike@outlook.com) to reserve your table.

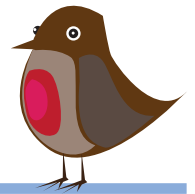
**Sat £7.50**

Chestnut Grove Theatre at Chestnut Grove School, Hearnville Rad, SW12 8RR Tickets: call the box office 07914 657 524 or online at [www.southsideplayers.org.uk](http://www.southsideplayers.org.uk)

### Wednesday 17 to Saturday 20 February 7.45pm (5pm Saturday)

#### The Importance of being Earnest

A trivial comedy for serious people, by Oscar Wilde, performed by the Southside Players. **Tickets 10, concessions Wed and**



#### Christmas at Holy Trinity

- 20 December 6pm Carol Service
- 24 December 3pm Crib Service (for small children and primary age children); 11pm Christmas Eve Communion
- 25 December 11am Christmas Day Service followed by shortened Holy Communion Holy Trinity Church, West Hill, SW5.

#### Christmas at All Saints

- 28 November 4.30pm Wandsworth Borough Lights Service
- 15 December 12.45pm Wandsworth Carol Service (with the Mayor of Wandsworth)
- 25 December 9.30am Christmas Day Service All Saints Church, Wandsworth High Street, SW18.

For more information visit [www.wandsworthparish.co.uk](http://www.wandsworthparish.co.uk) or call parish office 8788 4606



# Doing it online

Using our website helps keep your council tax bills low

## Pay your council tax

wandsworth.gov.uk/counciltax

## Pay a parking fine

wandsworth.gov.uk/parking/payment

## Apply for a parking permit/parking

wandsworth.gov.uk/parking/permits

## Join the e-library

wandsworth.gov.uk/libraries

## Search planning applications

wandsworth.gov.uk/planningregister

## Check your refuse collection day

wandsworth.gov.uk/collectionday

## Request a housing repair

wandsworth.gov.uk/housingonline

## Check local roadworks

wandsworth.gov.uk/roadworks

## Report a pothole

wandsworth.gov.uk/potholes

## Pay your rent

wandsworth.gov.uk/rents

## Talk to us online



weekly e-newsletter

wandsworth.gov.uk/24seven



facebook.com/wandsworth.council



twitter.com/wandbc



youtube.com/WandsworthBC

## Other contacts at the council

### Adult Care Information Service

(020) 8871 7707

accessteam@wandsworth.gov.uk

wandsworth.gov.uk/acis

### Benefits Service

(020) 8871 8080

benefits@wandsworth.gov.uk

### Carers information and support Wandsworth

#### Carers Centre

(020) 8877 1200

info@wandsworthcarers.org.uk

### Children's Social Work Service

(020) 8871 6622

cssduty@wandsworth.gov.uk

### Consumer Protection

(020) 8871 7720

esd@wandsworth.gov.uk

### Community Care Services

(020) 8871 7707

accessteam@wandsworth.gov.uk

### Council Tax

(020) 8871 8081

counciltax@wandsworth.gov.uk

### Education

(020) 8871 8013

edadmin@wandsworth.gov.uk

### Electoral Services

(020) 8871 6023

electoral@wandsworth.gov.uk

### Environmental Services

(020) 8871 6127

esd@wandsworth.gov.uk

### Family Information Service

- including Nurseries

(020) 8871 7899

fis@wandsworth.gov.uk

### Food Hygiene

(020) 8871 6139

esd@wandsworth.gov.uk

### Fraud Hotline

0800 783 2263 (freephone)

fraudhotline@wandsworth.gov.uk

gov.uk

### Graffiti Removal

(020) 8871 7049

graffiti@wandsworth.gov.uk

### Home Ownership

(020) 8871 6016

housesales@wandsworth.gov.uk

### Housing Advice

(020) 8871 6840

housingadvice@wandsworth.gov.uk

gov.uk

### Housing Repairs and Tenancy

#### Call your area team or management organisation

hms@wandsworth.gov.uk

### Leisure Centres & sports

#### facilities

(020) 8871 8154

sportsservices@wandsworth.gov.uk

gov.uk

### Libraries

wandsworth.libraries@gll.org

### Neighbourhood Watch

(020) 8871 7696

watchlinkmanager@wandsworth.gov.uk

gov.uk

### Noise Complaints

- council properties

(020) 8871 7490

hms@wandsworth.gov.uk

### Private properties

(020) 8871 7869

esd@wandsworth.gov.uk

### Parking

(020) 8871 8871

parking@wandsworth.gov.uk

### Parks

(020) 8871 7530

parks@wandsworth.gov.uk

### Rent collection Service

(020) 8871 8987

rents@wandsworth.gov.uk

### Rubbish, Recycling and Litter

(020) 8871 8558

wasteservices@wandsworth.gov.uk

gov.uk

### Births, Deaths, Weddings and Civil Partnerships

(020) 8871 6120

registeroffice@wandsworth.gov.uk

gov.uk

### Youth Clubs

(020) 8871 7553

youthservice@wandsworth.gov.uk

gov.uk

## Tell us what you think

You can post comments on all our news stories [wandsworth.gov.uk/news](http://wandsworth.gov.uk/news)

Make a complaint or comment on a council service [wandsworth.gov.uk/commentsandcomplaints](http://wandsworth.gov.uk/commentsandcomplaints)

Come to a Let's Talk meeting [wandsworth.gov.uk/letstalk](http://wandsworth.gov.uk/letstalk)

Contact your local councillor [wandsworth.gov.uk/councillors](http://wandsworth.gov.uk/councillors)

Have your say online consultations [wandsworth.gov.uk/consult](http://wandsworth.gov.uk/consult)



# WANDSWORTH LEISURE CENTRES REDEVELOPMENTS



Wandsworth's Leisure Centres have benefited from £3.5 million of refurbishments works since the start of 2015. Balham, Latchmere, Tooting Leisure Centre, Putney Leisure Centre and Wandle Recreation Centre are now completed! The centres are owned by the council and managed by Places for People. We took a closer look at 3 of these centres.



## Balham Leisure Centre

From January to June 2015 Balham Leisure Centre underwent a transformation. This Grade 2 listed building celebrated its 100th birthday in 2014, therefore restoring its character and charm was always part of the plan.

The swimming pool surround was retiled and new poolside sauna and steam cabins were built. A brand new dance studio was built along with two new treatment and therapy rooms. The existing dance studio was extended and the gym gained the latest fitness equipment. All the centres changing rooms were completely redeveloped and all finished to a high specification.

 “@BalhamLC Great swim in refurbished pool #ILoveSW #LoveBalham”

 “The best leisure centre I have ever been to. Friendly and family feel certainly adds to why I have been a member for many many years. Recently refurbished studio room is fantastic.”



## Latchmere Leisure Centre

Latchmere Leisure Centre's great beach effect leisure pool opened to the public this Easter complete with a brand new changing village. As well as a complete refurbishment, the space has been reorganised to include additional group changing rooms and poolside screens to improve bather comfort. In short the whole changing experience at Latchmere has been improved tremendously.

The gym was extended and gained the latest cardiovascular equipment along with a great range of strength and functional training equipment. Latchmere also introduced a state-of-the-art fingerprint entry system for gym users to gain quick and easy access on each visit.

Lastly the male and female sports changing rooms received a complete refurbishment, as well as refurbishments to communal areas and circulation corridors.

 “Great morning swim at refurbished @latchmerelc #thisgirlcan”

 “Loving the new changing rooms!”



## Tooting Leisure Centre

Refurbishments at Tooting Leisure Centre began in the gym during December 2014. The gym benefited from new flooring and redecorations as well as new strength and functional training equipment. The indoor cycling studio received a makeover and new treatment rooms and office spaces were built. During the first half of 2015 the changing village and the male and female sports changing rooms were completely redeveloped. The transformation was complete when new steam and sauna cabins were added to the poolside.

 “Loving the new steam and sauna at @tootinglc, a very welcome addition”

 “Liking the refurb of the gym @tootinglc! More kit & more workout space! #tooting”



**Balham: 020 8772 9577 • Latchmere: 020 7207 8004 • Tooting: 020 8333 7555**

**[www.placesforpeopleleisure.org](http://www.placesforpeopleleisure.org)**

**Gym • Swimming classes • Kids activities  
Courts • Halls • 3G pitches**



YOUR CHANCE  
TO WIN  
**£5,000**

when you  
**RECYCLE RIGHT**  
IN THE  
**Golden Ticket**  
Recycling Prize Draw



To enter the **£5,000 Golden Ticket** prize draw, just fill out a Golden Ticket and pop it in your clear recycling sack or bank along with the clean and dry items listed opposite.

You can submit a Golden Ticket each time you fill a clear sack or use your recycling bank. But remember, only tickets found with the correct recycling items at the recycling plant will be entered into a draw. So the more you recycle the correct materials, the more chance you have of winning. The winner will also be invited to nominate up to five local community groups\* to receive a share of a £2,500 community reward.

If you have run out of Golden Tickets you can collect more from your local library or leisure centre, the council's Customer Centre at the Town Hall, or from Housing and Community Services reception in Putney Bridge Road. Or visit [wrwa.gov.uk/GoldenTicket](http://wrwa.gov.uk/GoldenTicket) to print your own.

The next draw will take place on 18 December 2015 with further draws taking place up until March 2016.

**Good Luck!**



\*Community groups must meet the competition criteria and register in advance, making a commitment to encourage recycling.



For more details visit  
[wrwa.gov.uk/GoldenTicket](http://wrwa.gov.uk/GoldenTicket)

