

Brightside

**New look
adventure
playground**

See page 9

**Building an even
stronger Wandsworth**

See page 15

Be smart...

Keep track of your...

- Smartphone - Laptop
- Tablet - Computer

Some devices have the capability to run 'tracker' apps.

If the device is lost or stolen, the owner can use a computer to log onto their account and see a map of where the device is.

Install a tracker application on your Smartphone, tablet or laptop.

**It could help
Police trace your
device if stolen.**

**Community Safety
Andrew Jolly
0208 871 6567**

IMMOBILISE

Register your property for free at
www.immobilise.com

This database is searchable by police and helps identify stolen property, arrest offenders and return the property



www.wandsworth.gov.uk

Inside

February 2013

news

Residents welcome rail link	4-5
Healthy Wandsworth	6-7
Big society boxes clever	8
Chuggers challenged	11
Nine Elms update	12
Council's priorities published	15-18
Historic pub back in business	19
Recycling answers	22-23
Community heroes honoured	24
Tara gets a makeover	25

features and regulars

What's On	27
Useful numbers	31

Cover photo shows the new style of play equipment being installed at Battersea Park adventure playground

To obtain a copy of Brightside in large print or audio version please telephone (020) 8871 7266 or email brightside@wandsworth.gov.uk

YOUR BRIGHTSIDE

Your Brightside is distributed by London Letterbox Marketing. We expect all copies of Brightside to be delivered to every home in the borough and pushed fully through the letterbox. This issue of Brightside is being delivered from **January 30 to February 2**.

Your next Brightside will be delivered from **March 27 to March 31**. If you don't receive your copy call us on (020) 8871 7520. Brightside is the civic magazine of Wandsworth Council.

It is produced by the council's corporate communications unit. It is the only publication delivered to every household in the borough.

We would like to thank all our advertisers for their support. Brightside will consider display advertisements from non-council bodies (excluding recruitment) and reserves the right to decline advertisements.

The council neither accepts responsibility for the content of nor endorses any non-council advertisements.

- Editorial (020) 8871 8902
- Advertising (020) 8871 7266

If you have a comment about the magazine please telephone: (020) 8871 8902/6173 or email: brightside@wandsworth.gov.uk.

Brightside is printed on environmentally friendly paper, please recycle.



Why Wandsworth schools are tops

Wandsworth's schools rank tenth in an Ofsted league table of the standard of primary schools in English local authorities.

The borough's primary children have an 86 per cent chance of attending a good or outstanding school - the tenth best figure in the country. Wandsworth was one of only three inner London boroughs to reach the top ten.

When secondary schools and special schools are taken into account, the figure is even better - 89 per cent of Wandsworth's secondary schools are rated 'good' or 'outstanding' by Ofsted and a hundred per cent of the special schools. This places the borough eighth out of 151 local authorities nationally for the quality of all its schools.

And the borough's primaries were ranked fourth out of all 151 UK local authorities for the proportion of pupils achieving the expected levels in English and maths combined - the council's best performance so far in the SATs tests sat by all ten and 11-year-olds.

The council has pledged to continue to raise standards at schools, increase choice and create more school places.

►► [Read more at www.wandsworth.gov.uk/betterschoolsmorechoice](http://www.wandsworth.gov.uk/betterschoolsmorechoice)

Residents welcome new rail link

A new direct rail service from Clapham Junction to north London is proving extremely popular with local residents since it opened for business in December.

The council has long been campaigning for the new cross-London route which connects Battersea with new stations including Clapham High Street, Peckham Rye, Surrey Quays, Canada Water, Shoreditch High Street, Dalston Junction and Highbury & Islington.

More than one million people have used the service since it started, helping to ease congestion on other lines.

The council is working towards a series of major transport improvements as part of its Wandsworth Travel Choices campaign. This far-reaching initiative aims to improve the quality and range of transport options available right across the borough. Major projects include:

Bringing Cycle Hire to Wandsworth: The council has struck a deal with the Mayor of London which would see the existing Barclays Cycle Hire zone expanded into parts of Putney, Wandsworth Town and Battersea. Transport for London has submitted the first 30 planning applications for new bike docking stations and the scheme could be in operation by the end of the year. The council's ultimate aim is to secure complete borough-wide coverage. Visit www.wandsworth.gov.uk/cyclehire for more details.

Rework the Wandsworth Gyratory: Plans are being developed for a redesign of the one-way-system that would reduce traffic levels on Wandsworth High Street. The aim is to create a more pedestrian-friendly town centre where shops and other businesses can thrive. Funding for the road changes is being secured from a series of major development projects in the area.

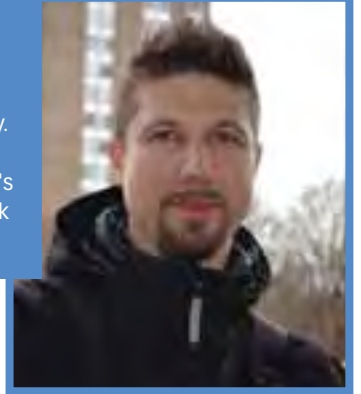
Putney Station Upgrade: Works to improve the station facilities, create a more spacious entrance hall and provide step-free access to the platforms are due to start in the spring. The council has also commissioned a feasibility study looking at the potential for a new entrance to be created in Oxford Road.

For Information on plans to bring the Tube to Battersea see page 12.

►► Find out more about the plans and tell us your transport improvement ideas at www.wandsworth.gov.uk/travelchoices.

Gabor Skoda

“I have been using the train for two weeks, it's my choice for going to work now. It's double the price the other way. It's a pleasant journey, rather than the tube which is so crowded. Time-wise it's about the same for me as I have to walk a bit, but I don't mind.”



Saima Hirij

“I'm using this train for commuting to work. It has good connections and is generally on time. It's been a pleasant journey for me so far. It hasn't been crowded, but I don't generally travel in the rush hour.”



Daniel Amoako

“It's really helped. I tried it for the first time yesterday and I have decided to repeat it today. The trains are clean, I hope they keep that up.”



Vanessa Clarke and Amber

“Really good with the buggy. So much better than driving. It’s very efficient.”



Allan

“This regular interval service is excellent. But I worry that the train is a bad design - what happens if they have to break in an emergency? There aren’t enough grab rails. More transverse seating would be safer.”

Thomas Farrer and Zen Huan

“It’s been really convenient because we don’t really like using the underground. We can get to places easily that were hard to get to before.”



David and Ilona Thew

“It’s fantastic. We weren’t looking forward to using the Underground to be honest. Much easier this way.”



Maria O'Connor

“I work in Clapham High Street and this goes right there. I can use my season ticket on here too, so it saves me a bit of money which is good.”



Emma Vallintine

“I just wish it was a bit more frequent as it’s such a quick way to get across town for us.”
There are four trains an hour - originally there were just 2.

New Year Resolutions Fading?

Try an Active Lifestyles session today

- Low cost sessions (£5 or less)
- No memberships or joining fee
- Community venues
- Great for beginners
- Activities include Pilates, Back to Netball, 50+ sessions, Tai Chi, Adult Swimming lessons, and Zumba



Active Lifestyles programme

www.wandsworth.gov.uk/activelifestyles
email: activelifestyles@wandsworth.gov.uk or telephone: (020) 8871 6373



BATTERSEA REACH [~] RIVERSIDE LIVING



VIEWING NOW

STYLISH 1 & 2 BEDROOM SHARED OWNERSHIP APARTMENTS

WITH EXCLUSIVE ACCESS TO 24-HOUR CONCIERGE SERVICE AND RESIDENTS' FITNESS SUITE

TO BOOK A VIEWING CONTACT OUR SALES TEAM:

020 8357 4444

sales@nhhg.org.uk (Quote RQB02)
nottinghilling.org.uk/batterseareach

FIRST STEPS
to home ownership in London



For eligibility t&c's visit: www.nottinghilling.org.uk
Image shown: Computer generated



Wandsworth people are the healthiest in the country, census figures show.

Just 11.2 per cent of residents have a long-term health problem or disability, compared to 17.3 per cent in Havering.

Wandsworth people also had the second best results in the country when asked to assess their own health - less than four per cent said their health was 'bad' or 'very bad' - and the borough had the lowest figures for people who said they had a long-term health problem or disability that limited their daily activities.

Probably because people's health is so good, Wandsworth had the lowest rate of unpaid carers in the country at 6.5 per cent. Nevertheless, the council provides extensive support for carers and has a strategy in place to ensure their needs are not overlooked. Visit www.wandsworth.gov.uk/carers.

“ The borough also has the tenth highest proportion of residents living in same-sex civil partnerships ”

figure in London outside the city. Wandsworth has a range of support services and schemes to help get people into work and training. Visit www.wandsworth.gov.uk/employment.

“ More than 70 per cent of Wandsworth residents are in employment and 22 per cent are described as economically inactive ”

More than 70 per cent of Wandsworth residents are in employment and 22 per cent are described as economically inactive – the lowest

Wandsworth people UK's healthiest



More than half of residents (54 per cent) are single, the ninth highest figure in the country, and the borough also has the tenth highest proportion of residents living in same-sex civil partnerships. 9.5 per cent are cohabiting couples without children – the highest in the country.

“ Just 11.2 per cent of residents have a long-term health problem or disability ”

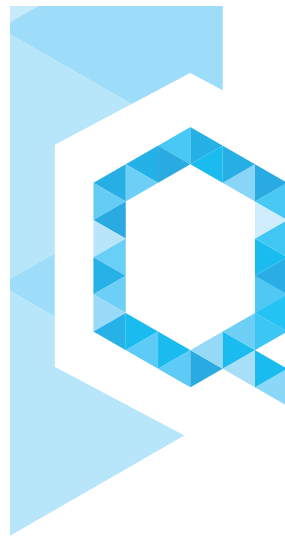
Wandsworth has the highest proportion of 25-39 year olds in England and Wales and a 30 per cent increase in the amount of under-fives – which means the council has been working hard to ensure enough new school places will be created.

The borough has a high proportion of Irish and other non-British white people, including Poles and Australians. In total 71.4 per cent are white, compared with the London average of 59.8 per cent. The proportion of people without a passport is amongst the lowest in the country – 6.2 compared to 16.9 per cent nationally

“ Wandsworth has the UK's highest proportion of 25-39 year olds in England and Wales ”

Just under 11 per cent of residents are Asian or British Asian - more than the national average but significantly less than the regional average of 18.4 per cent.

▶▶ Read more at www.wandsworth.gov.uk/census



RIVERSIDE QUARTER

Launching early 2013
18 exclusive
1 and 2
bedroom
apartments

Available to
buy through
Shared
Ownership

Situated next to the River Thames, and close to Wandsworth Park, register now for more information about this unique development and riverside living.



Register for further information:
020 8357 4444

sales@nhhg.org.uk (Quote RQB02)
nottinghillhousing.org.uk/riverside

FIRST STEPS
to home ownership in London



For eligibility t&cs visit: www.nottinghillhousing.org.uk
Images shown: Previous block at Riverside Quarter and local area

Boxing clever



Just under £50,000 has been handed out to 17 local grassroots organisations in the latest round of Big Society Fund awards.

Funding is available for projects that promote good citizenship, support voluntary work, and make a real difference to the quality of life for people who live in Wandsworth. The fund's handed out around £220,000 since its launch in 2011.

Recent recipients include the BWB Foundation which was awarded £4,700 to run a 12 week programme, in conjunction with Battersea fire station, teaching youngsters the skills and discipline of boxing (pictured).

The Furzedown Youth Centre in Tooting was awarded £4,150 to teach young people how to prepare and cook healthy food, while Roehampton-based SHINE Again which supports young children who face the risk of exclusion, have experienced trauma or have been diagnosed with ADHD or autism, received £4,000.

A grant of just under £5,000 is supporting the FAST youth mentoring project in Battersea to help young people improve their job prospects and teach business skills, while the Language Centre in Southfields is using its £1,000 grant to provide a crèche for working parents, offer foreign language classes for older children struggling with their school work and tuition to very young children whose first language is not English.

►► Find out more at www.wandsworth.gov.uk/wbsf or call Nigel Chandler on (020) 8871 6206.

Garden Partners

The Garden Partners scheme is looking for more volunteers. The scheme matches people over 60 with others willing to tend their garden, grow fruit and vegetables, and share what they grow. Visit www.ageuk.org.uk/wandsworth or call (020) 8877 8940.

Business help

Budding young entrepreneurs can get help from youth enterprise charity Business LaunchPad.

The charity was set up in the 1980s with help from the council, and offers free practical and personalised business guidance and support to 16-30 year olds. Originally called the Wandsworth Youth Enterprise Centre, it re-launched last year to reflect the fact it now helps young people across London.

Call (020) 8516 7700 or visit www.businesslaunchpad.org.uk.

Online memories

You can now view the Putney Vale Cemetery Book of Remembrance online. Go to www.wandsworth.gov.uk/cemetaries.

130

Garratt Lane

Prices start from just £92,750* for a 35% share (full market value £265,000)



A selection of stunning 1 & 2 bed shared ownership apartments in the heart of Wandsworth

Wandsworth is one of south west London's most in demand addresses. And little wonder. From this vibrant community one of the world's great capital cities is your oyster, with regular train services whisking you up to London Waterloo @ in around 12 minutes from nearby Earsfield train station.

1 Bed properties from £92,750
for a 35% share (full market value £265,000)

2 Beds from properties £117,250
for a 35% share (full market value £335,000)



To register your interest and for more information contact our Sales & Marketing team now on: **t. 01932 235801**
e.sales@paragonchg.co.uk www.paragonchg.co.uk





Eligibility
You must have a local connection to the area with priority going to applicants who are first time buyers who live or work in Wandsworth. You must be registered @ with Wandsworth Council and for further information please contact Wandsworth @ Council by email at housesales@wandsworth.gov.uk or telephone 020 8871 6016 @ for an application form. You must also be registered with First Steps at: www.firststepslondon.org or telephone 0845 230 8099. @

Kids design

playground



Children and young people have helped choose the new play equipment for the new-look Battersea Park adventure playground.

Work is underway to install the childrens' favourites as part of a £200,000 revamp of the playground. The aim is to reopen its gates in time for the school Easter holidays.

The new equipment includes rope swings, chain ladders, aerial walkways, tube slides, scramble nets, zip wires and fireman's poles.

The adventure playground will also have longer opening hours when it reopens. The revamped facility will be available for use at all times the park is open, seven days a week.

The new play equipment is designed for young people of all ages. Last summer 92 per cent of visitors to the playground were under 12 with more than half aged between five and eight.

Wandsworth manages more than 200 playgrounds and play areas in parks, commons and housing estates. Over the past four years nearly £3m has been spent on maintaining and improving these. The council also provides a grant of £125,000 a year to a local charity to support an adventure playground on Wandsworth Common for disabled children.

Quit it

Want to stop smoking? Get support while you shop at drop-in clinics in Asda at Clapham Junction and Roehampton this month. For information and times call Wandsworth Stop Smoking Service on freephone 0800 389 7921 or visit www.wandsworth.gov.uk/stopsmoking.

Safe rowing

Barn Elms Boathouse has been awarded the runners' up prize in the annual Port of London Rowing Safety Awards. The awards recognise clubs' safety record and good navigation. Visit www.wandsworth.gov.uk/barnelmsboathouse.

Youth win

The Youth Momentum Conference, which saw 180 young people share their views directly with local decision-makers, has been given a prestigious British Youth Council (BYC) Inspiring Project Award.

The event was organised by the Wandsworth Youth Council. Find out more at www.wandsworth.gov.uk/youth.

APPLE LOVERS hate waste

Apples are simply my favourite fruit. I put them in the fridge so they last longer. After a good peel, even bruised ones make a scrumptious crumble, or they'll go into a smoothie. Delicious.

Find out how to make the most of apples and other fruits and vegetables at the **Feed the 1,000 Event** at University of Roehampton, Wednesday 13 February from 3.00-6.30pm.

lovefoodhatewaste.com has more tips and recipes to help you waste less food and save up to £50 a month.

 **recycle**
westernriverside



MERTON COUNCIL

You don't have to be rich to adopt

With a full support package tailored to your needs, adoption is a lot more than just a possibility. For a perfect match visit our website.

www.merton.gov.uk/perfect



Wandsworth on film

Wandsworth is the third most popular spot in London for film directors and programme makers, according to new research by Film London – earning the council an annual windfall of £200,000.

Movies and TV shot here included *Fast Girls*, *The Inbetweeners Movie*, *Silent Witness* and *Episodes*, plus adverts and photoshoots by Adidas, Nintendo and Vogue, and a pop video by One Direction. The picture shows recent filming in Battersea Park of the reality show *Made in Chelsea*.

Call to stop chuggers

Charities are being urged to call a halt to fundraising efforts that rely on doorstep chuggers.

The call follows complaints from residents in Putney who have had chuggers - or so-called 'charity muggers' - knocking on their doors late in the evening trying to elicit donations.

The council's adult social services spokesman Cllr Jim Maddan has written to the charity involved to ask them to stop sending collectors to people's homes.

Local authorities in London have no formal powers to regulate chuggers because no actual money changes hands. The Met Police does have some powers to control their activities, but there are gaps in the law that often allow them to operate with impunity.

Cllr Maddan said: "Very few residents will want callers knocking on their doors when it's dark, especially if it's to demand bank account details. I certainly do not think that older or vulnerable residents should be pressured into divulging this kind of information to people who come cold-calling."



Home Delivery Library Service

If you are unable to visit your local library, a selection of books or talking books to suit you can be delivered to your home once a month, between 9am and 5pm Monday to Friday.



AD:1055 (12.12)

(020) 8871 6350

www.wandsworth.gov.uk/libraries





New park for Battersea

Wandsworth residents can look forward to picnics outside Battersea Power Station after detailed plans for the first phase of the site's redevelopment were approved.

The scheme would create a brand new public park spanning six acres along with a new section of the Thames Path. This green space would be connected to Battersea Park via a new riverside walkway which would run underneath the railway bridge.

800 homes would also be built during the first stage of the project as well as commercial space for new shops, café and other businesses.

The redevelopment of the entire power station site will be

completed in phases over the next ten years. The final scheme will include a new riverbus passenger pier, Tube station and a whole new town centre providing thousands of jobs. The owner is also restoring the listed power station building which will be opened up to the public.

The project is just one of 27 development schemes taking place across the Nine Elms on the South Bank regeneration area. Together they will provide 25,000 new jobs, around 1,000 apprenticeships, 16,000 new homes, parks and a new public market.

Sign up for news alert about Nine Elms on the South Bank at www.nineelmslondon.com/e-newsletter

Bringing the Tube to Battersea

The Government has announced a £1bn loan guarantee to fund two new Northern line Underground stations in Nine Elms.

The Northern line extension would create two new Tube stops - one on Wandsworth Road near Sainsbury's supermarket, the other at Battersea Power Station. Journey times to the West End will drop to just 12 minutes.

The breakthrough follows an eight-year council campaign to put Battersea on the Tube map and is key to transforming this underused part of the borough with new homes, jobs and opportunities for local people.

The £1bn loan would be repaid through business rates collected within a new Nine Elms Enterprise Zone, and through a tax on the area's private development sites. For example the



owners of Battersea Power Station will pay more than £200m towards the project.

TfL plans to submit the scheme's planning application in April 2013. If approved by the Government construction could begin in 2015 and trains could start running in 2020.

►► Find out more at www.nineelmslondon.com.

Get connected

>> WANDSWORTH
CONNECTED >>

Wandsworth Connected is about making it easier for you to access services 24/7. We have put many of our services online, with more in the pipeline for 2013. It's more convenient for you, and reduces costs for us – helping to keep council tax low and protect frontline services.

Online services include:

- **Parking** – the majority of you now choose to buy residents and visitors' permits online. You can also pay penalty charge notices.
- **Library services** – you can manage your library account, reserve and renew books, download e-books, access reference guides and more through our e-library.
- **Council tax** – manage your account online.
- **Housing** – tenants and leaseholders can pay rent, request a repair and more.
- **MOTs** – book an MOT at the council's test centre.
- **Holiday playschemes** – book a place for your child online.
- **Adult Care** – the new-look Adult Care Information Service (ACIS) has been made easier to navigate. It has a full range of information on the care and support available for vulnerable people, to help them choose what's right for them.
- **Waste and recycling** - get information on collection days, request orange bags, report a problem and more.



Find out what you can do online at
www.wandsworth.gov.uk/online



Wandsworth is also continuing to develop online methods of talking to local people. Read about our social media feeds and e-newsletter at
www.wandsworth.gov.uk/news

St George's Healthcare 
NHS Trust

MINI FOUNDATION TRUST TAKE PART IN OUR CONSULTATION

From Friday 1st February until Friday 26th April 2013 St George's Healthcare NHS Trust is consulting on its plans to become an NHS Foundation Trust.

We want to hear from staff, patients, our local communities and the wider public about what you all think of our plans. Please visit www.stgeorges.nhs.uk to read our proposals and feed back your views to us.

You can also come to the following events where executive directors will talk through our plans and answer your questions:

Monday 11th February, 13.00 – 14.00hrs
Michael Heron Lecture Theatre, 1st Floor
Grosvenor Wing, St George's Hospital, Tooting

Tuesday 19th February, 18.00 – 19.00hrs
Barnes and Richmond rooms,
Queen Mary's Hospital, Roehampton

Thursday 7th March, 11.00 – 12.00hrs
Michael Heron Lecture Theatre, 1st Floor Grosvenor Wing,
St George's Hospital, Tooting

Tuesday 2nd April, 13.00 – 14.00hrs
Barnes and Richmond rooms,
Queen Mary's Hospital, Roehampton

Wednesday 3rd April, 18.00 – 19.00hrs
Michael Heron Lecture Theatre, 1st Floor Grosvenor Wing,
St George's Hospital, Tooting

You can also visit the main entrance of Grosvenor Wing, St George's Hospital, every Monday during the consultation from 10.00 – 14.00hrs to learn more, ask staff questions and feedback your views.

Who Cares

Supporting Wandsworth carers

A Carer is... Someone who provides unpaid support to a relative, partner, child or friend due to illness, disability, frailty, mental health condition or substance misuse.



Get help to care

Many carers provide practical or emotional support to someone with a mental health condition, including depression.

The Wandsworth Carers' Centre can help you meet others in similar situations who understand what you're going through and can guide you around mental health systems.

The centre also has a wealth of information, advice and support, including out of hours help for those who are working, and one-to-one support. They can also put you in touch with other organisations and link you in with other Carers' Centre services such as complementary therapies or counselling.

Visit www.carerswandsworth.org.uk or call (020) 8877 1200.

Lola's story:

Lola has two sons with a mental illness, supports her partner who experiences depression and has a son with a physical disability. She came into contact with the Carers' Centre two years ago.

Lola has met with the Mental Health project worker for individual support. This has given her a space to talk about her own needs, get support with liaising with professionals, and helped her to feel more empowered and able to cope.

She has also attended the Mental Health peer support group at the Carers' Centre and was supported to access a Carers' Assessment to look at what support she needs to continue her caring role. She has subsequently received a carers' grant, the chance to take a break, and training courses.

"When my elder son became mentally ill I was in a world of wilderness, I knew nothing, I had no one to advise us ... we were in darkness until two years ago. I do not want other Carers to go through what we as a family went through. I am supporting other carers and learning every day."

Keep warm this winter

Do you care for an older person? Cold weather can lead to serious health problems, such as heart attacks, strokes or pneumonia, especially if you have a long-term health condition or are 65 or over.

Here's five tips to stay healthy this winter:

- 1 Heat your home well. Setting your heating to the right temperature (18-21 degrees centigrade) will keep you warm and your bills lower.
- 2 Get financial support. There are grants, benefits and sources of advice available to make your home more energy efficient, improve your heating or help with bills. Claim all the benefits you are entitled to.
- 3 Eat well. Try to make sure you have hot meals and drinks regularly throughout the day.
- 4 Get a flu jab. You can get a free jab from your GP if you are over 65 or have a long-term health condition.
- 5 Look after yourself and others. Avoid going out on cold days and if you must, wrap up warm. Look out for older neighbours and relatives during cold snaps.

For help and advice call the Adult Social Services Access team on (020) 8871 7707 or visit www.wandsworth.gov.uk/keepingwarm.

Building an even stronger Wandsworth

Council sets out priorities for borough

by Cllr Ravi Govindia, Leader of Wandsworth Council



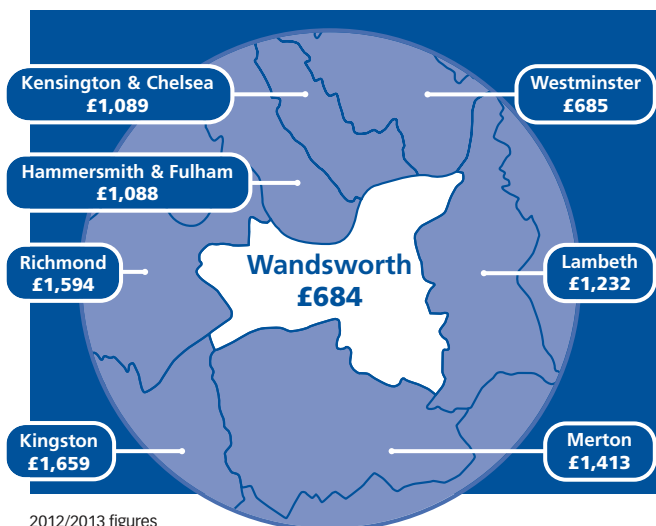
We live in one of the best places in London. Wandsworth has the lowest crime rate in inner London, great schools and parks and some of London's most community-spirited neighbourhoods. Council tax is still the lowest in the country and the quality of local services is among the best.

The challenge ahead is to make Wandsworth even stronger.

The future looks promising on many fronts. The massive Nine Elms regeneration scheme promises thousands of new jobs and investment in the local

economy. We have five new schools opening soon and ambitious plans to improve some of the borough's biggest council estates.

The council still has much to do, particularly to improve transport and to cater for the rapidly expanding need for school places. We also want to do more to share our wider aspirations with families who are struggling – to create new job opportunities, to help people onto the property ladder and to give children the best start in school.



2012/2013 figures

What are we doing?

- ✓ The council tax has stayed the same for five years - Wandsworth still has the lowest council tax in the country, about half the London average.
- ✓ Over the last 20 years of council tax, Wandsworth residents are nearly £8,600 better off compared to the average Londoner.
- ✓ The borough's refuse and street cleansing contracts have been relet and secured at lower cost.

VALUE FOR MONEY

In tough economic times, when hard-working families are struggling to make ends meet, one of the most valued things the council can do is to minimise the amount of tax people pay. Low council tax remains central to everything the council does. The money the council gets from Government is being reduced and we have had to find new and creative ways to do more with less.

- ✓ The council is doing its best to save £80m by 2014 in ways the majority of our residents will not notice. Rather than closing libraries we have introduced competition to reduce cost while improving the service.
- ✓ The council has reduced its back office costs while making it easier for people to get in contact. Many services are available online and a new customer services centre opened recently at the Town Hall.
- ✓ Rather than closing libraries as some other authorities are doing, the council is saving £500,000 by inviting social enterprise charity GLL to take over the running of them.



CREATING NEW JOB OPPORTUNITIES

The council are looking at every opportunity to bring new investment, new businesses and new jobs to the borough.

What is the council doing?

- ✓ The regeneration of Nine Elms, the biggest transformation project in the capital, is on target to create 25,000 new jobs. The council is expecting to deliver 1,000 construction and engineering apprenticeships. This compares to 457 at the Olympic site and 400 for the Crossrail project.
- ✓ In Wandsworth Town Centre the council has secured over £1bn of new investment which is bringing more than 1,000 new jobs to the local area. As development gathers pace new construction jobs and apprenticeship opportunities will be targeted at local people to ensure Wandsworth residents are the first to benefit.
- ✓ Clapham Junction is also benefiting from a multi-million pound town centre improvement scheme which is creating a more attractive and pedestrian-friendly shopping environment where local businesses can thrive.

CREATING TRANSPORT CHOICE

Making it easier for local people and businesses to get around is an important part of the council's vision for a stronger Wandsworth. Getting the borough better connected is vital for residents' quality of life and for the health of the local economy and future investment in the borough.



What is the council doing?

- ✓ The council is bringing Boris Bikes to the borough, working with the Mayor of London.
- ✓ Having secured a new tube stop at Battersea Power Station we will now lobby for that to be extended to Clapham Junction.
- ✓ Balham, Clapham Junction, Earlsfield and Wandsworth Town rail stations have all seen major improvements.
- ✓ The council is campaigning for Gatwick trains to stop at Balham and for a new direct rail service between Heathrow and Waterloo which would stop at Clapham Junction, Putney and Vauxhall.
- ✓ The council's campaign for longer, more frequent trains on local routes into Victoria and Waterloo is getting results with more ten-carriage services starting in May next year.
- ✓ The council has secured a new cross-London rail route between Clapham Junction and Surrey Quays. The new London Overground service will continue direct to stations in north London including Shoreditch High Street, Hoxton and Dalston Junction.
- ✓ The council will lobby for more buses to Roehampton which has poor transport connections compared to neighbouring areas.
- ✓ The council wants Crossrail 2 route to run via Clapham Junction station to Tooting Broadway connecting the busy Battersea interchange to the underground network.



IMPROVING OUR SCHOOLS

Wandsworth schools are doing really well. That makes them very popular. When combined with a very significant growth in the school-aged population, that makes many Wandsworth schools difficult to get in to. Trying to get everyone the place they want and supporting schools in driving up standards are the council's top concerns.

What is the council doing?

- ✓ Wandsworth is in the top ten of the country for the quality of our schools, according to Ofsted.
- ✓ The council has prepared for the rapidly rising demand for school places by funding the expansion of existing primary schools.
- ✓ The council is progressing plans for a badly-needed new primary school on the former Putney hospital site.
- ✓ The council has supported successful applications for three other new free schools - Tooting Primary in Franciscan Road and Rutherford House School on the Balham Youth Court site are both due to open in September 2013 providing 60 places each per year. The South London Jewish Free School also has Government approval to open in 2013.
- ✓ Bolingbroke Academy opened this September, extending the choice of secondary schools.



- ✓ GCSE results in Wandsworth are well above the national average and remained consistent this year, when across the country pass rates fell.
- ✓ Children from poorer families are doing better at schools in Wandsworth than in most other parts of the country, according to a recent Ofsted assessment.
- ✓ More than a third of schools in the borough are rated as 'outstanding' by Ofsted with a further 45 per cent rated as 'good', often with 'outstanding features'.



IMPROVING HOUSING CHOICE

Wandsworth Council knows that it is difficult to get on the housing ladder these days, while demand for social housing is growing all the time. The result is that the majority of low and middle-income earners have little choice in where they can afford to live. Wandsworth Council is trying to make it easier to get on the housing ladder and to secure more social housing.

What is the council doing?

- ✓ Wandsworth have led the way in the successful campaign to get the government to increase the Right to Buy discount for council tenants to £75,000.
- ✓ The council is giving greater priority to working households when it comes to the allocation of social housing.
- ✓ The council is introducing new short-term tenancies that are conditional on tenants actively looking for work.
- ✓ The council is backing plans for higher rents for council tenants on incomes over £60,000 a year.
- ✓ The council is committed to local homes for local people. Borough residents get priority for affordable housing by registering with the home ownership team.



STANDING UP FOR WANDSWORTH

Wandsworth sees it as an important part of the council's job to speak up for Wandsworth and for local residents and businesses. The council is determined to make sure the voice of Wandsworth is heard by central Government and all the other organisations and agencies affecting the quality of life in our borough.

What is the council doing?

- ✓ The council and its Save Barn Elms Alliance partners mounted a fierce and successful campaign to protect the playing fields from seven years of disruption which would have been caused by the construction of the Thames Tideway Tunnel. Working with local residents, we convinced Thames Water to base its super sewer tunnelling compound on an alternative brownfield site.
- ✓ As well as setting up the first police team dedicated to public safety in parks, Wandsworth is leading the way in using CCTV to catch criminals and cracking down on con-artists who prey on the elderly, doorstep thieves and rogue traders.
- ✓ The council is taking a tough line on anti-social behaviour, evicting council tenants who persistently cause misery to their neighbours and banning street drinking in areas such as Tooting where there have been persistent problems.
- ✓ Wandsworth is leading the cross-London 2M group of councils in campaigning against the expansion of Heathrow. The council took the previous Government to court to defeat plans for a third runway and will continue to fight against expansion, more night flights or loss of noise relief from changes to runway alteration.

A CLEANER, GREENER WANDSWORTH

The council is proud of the quality of our parks and the cleanliness of our streets. The council recognises the support and help of our residents in keeping them that way. The council is also working hard to make Wandsworth even greener and more environmentally friendly.



What the council is doing?

- ✓ Wandsworth has convinced TfL to upgrade buses which are causing more than two thirds of the air pollution on Putney High Street. A wider programme of air quality measures is also underway to tackle the problem on this congested road.
- ✓ Wandsworth is calling on the Government to drop or amend plans which would allow people to double the size of their homes without planning permission in non conservation areas.
- ✓ None of our waste goes to landfill. Instead the council will send non-recyclable waste to the Belvedere Energy from Waste plant which generate electricity.
- ✓ The council is expanding car clubs, including piloting electric cars in Putney.
- ✓ The council has been working with Transport for London to introduce cycle 'superhighways' in the borough.
- ✓ Solar panels installed on council roofs earlier this year have already saved the council £16,000 and generated enough energy to power more than 11 average households.
- ✓ The council is working with schools to encourage parents and pupils to walk to school rather than drive.



Historic pub back in business



The King's Head pub in Roehampton has reopened its doors to customers in what is being highlighted as a major success in efforts to protect historic local buildings at risk.

The Grade II Listed pub, which dates back to the 17th Century, is once again a thriving local business attracting visitors to Roehampton and contributing to the area's regeneration following efforts by the council, property developer St James and Young's Brewery to give it a new lease of life.

The pub faced imminent danger when its former owners closed its doors in 2006 and boarded up the building. There were fears it could be squatted or fall victim to arson, and shortly after it closed thieves broke in and stole copper piping from its central heating system.

The council put pressure on the owner to beef up security while staff in the planning department's conservation team began actively monitoring the site to ensure no further damage was caused.

In February 2007 the council refused planning permission for a scheme that would have turned the pub into residential units, along with a separate block of flats in its garden. And it refused a second application in June 2008 when developers wanted to provide seven flats within the pub and four large houses in the garden.

A subsequent planning application from developer St James, which was approved in 2010, paved the way for the pub to be fully refurbished and extended, with some residential units provided in its adjacent coach house.

Refurbishment work began earlier this year and in partnership with Young's, the King's Head recently reopened its doors and is now attracting customers from across the borough who want to enjoy good beers in a high quality food-based pub with a garden.

We live just down the road, but to be honest I hadn't even noticed it before today. It will be lovely in the summer too."

Jan and Harry Taylor

"Until now there's been nowhere we could go in Roehampton as a family. I'd only ever seen it boarded up before now so it's a great improvement. The area definitely needed something like this."

Tamara and Matt Williams, visiting the pub with their son Zack and Tamara's parents Heather and Paul Callander, on a visit from Australia.





Keeping Wandsworth healthy

The council has new responsibilities from April this year. Helping people to smoke and drink less, reducing teenage pregnancy and addressing childhood obesity are some of the key targets.

Wandsworth will take charge of protected budgets and together with the local NHS has drawn up a Joint Health and Wellbeing Strategy which sets out how local priorities will be tackled. Other targets include reducing heart disease and sexually transmitted disease and improving services for people with mental health problems. The borough has higher than expected rates of winter deaths and deaths from accidental falls and tackling these are also priorities.

Wandsworth aims to better support people to understand and manage their own health, to support carers, to reduce health inequality between the richer and poorer parts of the borough and to better integrate adult care with health services. People will receive one integrated package of care with health and social care professionals working more effectively together to provide better services.

Many of the services commissioned will be for older and vulnerable people and the focus will be on recovery and preventative approaches to keep people independent and living in their own home for as long as possible and to prevent unnecessary hospital admissions.

►► To find out more, go to www.wandsworth.gov.uk/jsna.

YOUR HEALTH

Who's who from April?

Wandsworth Council Different departments will work together to help keep people healthy. This includes the Public Health Department, which has moved from the NHS to the town hall, Adult Social Services and Children's Services

Wandsworth Clinical Commissioning Group (CCG) A consortium of local GP practices now responsible for commissioning, or 'buying', health services on behalf of patients.

Wandsworth Health & Wellbeing Board A partnership between the council, CCG and new patients' group Wandsworth Healthwatch to ensure the voices of patients and service users are heard.

Application closing date is 8 February 2013

Have you applied for a nursery place in a school?

If your child was born between September 2009 and August 2010, your child can have up to **15 hours free** nursery education from September 2013. Closing date: Friday 8 February 2013, for council schools.

Contact the Family Information Service for more information on (020) 8871 7899 or email fis@wandsworth.gov.uk



HIGH STREET HELP TO CHOOSE LIVING AIDS

A new system for giving people more choice over simple aids to help them with their everyday lives is proving a hit with users.



People who need special equipment to help them live independently, such as shower chairs, raised toilet seats and walking frames, can now get them from the high street.

Previously the equipment was loaned by the council. Now you can get a prescription and use it as a range of approved local shops, with specially-trained staff on hand to help you.

It means you won't have to wait for delivery and can choose the item you like, rather than just accept what you are given. Many items cost less than £30. The system is available to people who

have been assessed by the council or local healthcare professionals such as district nurses or occupational therapists. People who have not been assessed can also get their equipment from these specialist shops. A list of where are located is available on the adult care information service website:

www.wandsworth.gov.uk/acis.

More complex equipment, such as special beds, hoists and bath lifts will still be delivered, fitted and maintained by the council.

Find out more at
www.wandsworth.gov.uk/acis
or contact the adult social services access team on (020) 8871 7707.

Recycling – your questions answered

We invited you to submit your recycling questions on Facebook and Streetlife. Many of you responded – here's our answers.

Q: Why don't we get the orange bags delivered to our door anymore - or to the local library? Where do we get them from now?

A: All households receiving the orange sack recycling service should get three rolls of 30 sacks delivered once a year, rather than one roll delivered quarterly like before. This reduces distribution costs and the wastage of recycling sacks by households that didn't need so many. To check when your next delivery is due visit www.wandsworth.gov.uk/waste and enter your street name in the search box.

We stopped distributing the sacks via libraries as too many were being taken by people who don't receive the orange sack recycling service and/or don't use them for recycling. If you need another roll before your next delivery is due, visit wasteservices.wandsworth.gov.uk/live/public-access/ email wasteservices@wandsworth.gov.uk or call the **Recycling Hotline on (020) 8871 7497**. You can also collect a roll from the main reception at the Town Hall in Wandsworth High Street.

Q: Why do the dustmen mix everything up?

A: Rubbish and recycling sack collections are now done at the same time, using 'split-back' lorries. The dustmen should always put orange sacks and general rubbish into different compartments unless an orange sack contains too much contamination (things that shouldn't be included e.g. old clothes, food waste, carrier bags) in which case they will treat it as general rubbish.

This ensures that it doesn't contaminate everyone else's well-sorted recycling.

Q: Why can't I recycle shredded paper?

A: It tends to clog machinery at the Smugglers Way sorting plant, and too much gets into the sorted glass, making it harder to sell on to recycling companies.

Q: Are there any plans to give residents big plastic boxes rather than plastic bags?

A: No. In Wandsworth's busy streets it is important that the collection vehicles can proceed quickly to avoid disrupting the flow of traffic. Not having to return a box to each house helps to achieve this.

Q: I'd like to see WBC fining people for not recycling. It should be compulsory, not optional. Do you have any plans to do this?

A: No. We would strongly urge our residents to recycle, but do not plan to force them.

Q: Are there any plans to make the orange recycling bags stronger again?

A: Yes, the next batch of sacks will be thicker and stronger due to feedback we have received from residents. Research suggests that the current batch of sacks is also too small, so the next batch will also be larger.

Q: Do I need to rip up cardboard boxes into small pieces to stuff them into orange sacks, or will collapsed boxes now be picked up?

A: Please either tear up cardboard into a size that will fit in the sacks or if easier, flatten it into a bundle, tying with string if necessary.





Q: What can I recycle in Wandsworth's orange sacks and banks?

A: window envelopes?

Yes - They can be easily separated from the envelope at the paper mill.

plastic bags?

No - they have to be removed by hand at the sorting plant. They can be recycled at most supermarkets. But we do recycle all the orange recycling sacks we get back.

tin foil/ foil trays?

No - the sorting plant is unable to deal them. You can put in all plastic food pots and trays

the Yellow Pages?

Yes - please recycle all paper directories and catalogues.

Pringles tubes?

No - because they are a mixture of card, metal and plastic

bottle tops & other lids?

No - they cause problems at the sorting plant. Please remove all tops and lids from bottles and other containers.

bubble wrap?

No - the sorting plant can't deal with it.

Get full details of what can and can't be recycled at www.wandsworth.gov.uk/recyclefromhome.

Q: A TV report recently said that only a small percentage of items put into recycling bags is really recycled - is this true?

A: No, all the sorted paper, glass, metal, plastic etc. is sold to reprocessors who use it to make new recycled products. Only things that cannot be recycled in orange sacks and bags are sent for disposal at the energy-from-waste plant, along with a small amount of paper, glass, metal and plastic that ends up in the "reject" stream. Nothing is sent to landfill.

Q: I noticed that the recycling bins by Latchmere Leisure Centre have gone. What is the plan for these mini recycling sites? Could they be used for things not covered by the orange bags, but a hassle to take to the tip?

A: These recycling bins were removed because of the amount of fly-tipping around them and the fact that nearly all households in Wandsworth now receive the orange recycling sack or bank service. Where fly-tipping isn't a problem, we seek to provide recycling banks for materials not covered by the orange sack/bank service, such as textiles and small electrical items.

Q: Would it be possible to offer the occasional free general collection for larger items?

A: It's possible, but it would be a very expensive service to provide and the council has no plans to do so. Collection charges can be avoided by delivering larger items to the civic amenity site in Smugglers Way, Wandsworth. Alternatively, items that may have value to someone else can potentially be given away or sold.

Q: Can the council please answer my questions about the new civic amenity site at Smugglers Way:

A: The re-use section is a great idea but can people take things from it? (not that I've seen anything I want, just in case I do!)

No - items left in the re-use area at the site are for the "Re:work" refurbishment and repair project on site which provides work experience opportunities.

I've seen so many potentially re-useable things being chucked into the household waste containers.

The design of the refurbished facility in Smugglers Way is intended to make it easier for people to separate more of their waste for recycling. In November, recycling had increased by around 30 per cent compared to a year earlier.

Are you running any more visits to the recycling plant? I've missed out on previous ones.

Yes - to arrange a tour of the recycling sorting plant in Smugglers Way, Wandsworth, please call Steve Ford on (020) 8875 8884 or email steve@wrwa.gov.uk.

Please note that the civic amenity site is controlled and operated by the Western Riverside Waste Authority, not Wandsworth Council. See www.wrwa.gov.uk.



Honouring our community heroes

Six volunteers whose community work has been deemed a "shining example of unselfish giving" have been honoured at the annual Civic Awards.

Presenting them with their awards, Mayor of Wandsworth, Councillor Adrian Knowles, admitted to being "humbled" by the amount of work the six men and women have done for Wandsworth's community - without expecting anything in return.



Keith Stent As a conductor and director of the Wandsworth Symphony Orchestra (WSO) Keith has helped bring live orchestral music to the borough since 1963. He also sets aside time to work with young musicians in Wandsworth.

Helen Hughes is a volunteer police officer who has been instrumental in mentoring and assisting new recruits who have joined the special constabulary in Wandsworth. Helen has helped out at many community events, worked with children in local schools, been heavily involved with the Community Policing Contact Centre (the first police office in a mosque in the UK) - as well as assisting regular officers with 999 calls.

Staff Sergeant Niall Rymill a detachment commander at 132 Royal Signals Detachment based in Southfields, 23-year-old Niall Rymill is the youngest of this year's Civic Awards winners. Four years ago, Staff Sergeant Rymill, who was himself a cadet in the unit, heard it had been forced to close. He returned as an instructor to help reopen it, and the unit now boasts more than twenty cadets and four instructors.

Nick Steiner a retired fireman and current Justice of the Peace, Nick started the first Neighbourhood Watch in the Southfields Grid, was a parent governor at the former Southfields School, sits on his local doctor's surgery patient panel - and is a founding member and chairman of the Friends of Wimbledon Park.

Mozir Uddin Ahmed, owner of the Putney Tandoori, has over the past quarter of a century established himself as a well-respected community volunteer. He financially supports local children's sports teams through a community programme - including children's 7 a-side football team Mango Putney. He has also been an advocate for local businesses, promoted inter-faith co-operation and helped to raise £10,000 in donations for flood victims in Bangladesh.



Alison Angus, a mother-of-five, has built a strong community within Wandsworth's Allfarthing School as head of the Parent Teacher Association. Last year she showed tremendous initiative and an ability to stretch limited resources by setting up a local playgroup - creating a much needed resource for adults with pre school children.

► For more information visit www.wandsworth.gov.uk/civicawards.



Tara gets a makeover

Earlsfield's Tara Arts Theatre is getting a striking new look.

Planners have agreed proposals to upgrade the Garratt Lane theatre - home to an acclaimed arts company which first brought Asian theatre to Britain in the 1970s.

The design would see the theatre's historic brickwork façade restored and the building extended. There will be a mixture of coloured panels and glazed windows and a tree motif will wrap around the entire four storey side extension. This is inspired by the Banyan Tree - India's national tree and a traditional community meeting place where people gather in the shade of its canopy.

Seating capacity will increase by almost 80 per cent, and there will be dedicated new rehearsal and workshop space and a patio garden. The work is being partly funded by Arts Council England.

Tara began life as a touring company, and moved to its present site in 1985. It hosts and presents theatre and other live performances, and helps develop the talents of new artists.

Artistic Director Jatinder Verma said: "Taken together, these developments will help us support the development of many more artists as well as nearly doubling our audiences - who will benefit from individualised comfortable seats in a raked auditorium."

Tara Arts Theatre will have a full programme of productions until the renovation starts, expected to be later this year. It will then return to its touring roots while work continues. Its production of Moliere's *The Miser* is currently on a national tour. For details see www.tara-arts.com.



Antony Bunsee as the Dame and Deven Modha as Billi the Cat in *Dick Whittington Goes Bollywood*. Photo by Richard Walker.



Wandsworth Sash Windows

125 Lavender Hill

0207 924 7303

wandsworthsashwindows.com

Your local sash window specialists

Traditional Timber

Double Glazed

Draught Proofing

Overhaul

Acoustic Glass

Sliding Sash Windows

Quote 'Brightside magazine'
for an immediate 10% discount

Five ways to keep your body in tip-top shape and your mind alert in 2013

Keep up to date with sport and leisure in the borough by following Active Wandsworth on Facebook, or @activewandsworth on Twitter.

1

Join a reading group

Wandsworth's libraries offer a diverse selection of reading groups, including Silver Circle, which is especially for people over 50, groups for children and teenagers and groups which discuss books in the Urdu language and by black writers.

2

Join a social group

As well as reading groups, the libraries service runs a whole range of other social groups, including knitting and sewing circles, groups that meet to chat and reminisce and a film club where you can chat with fellow film buffs. Visit www.wandsworth.gov.uk/libraries

3

Take an adult education course

Putney School of Art and Design is running intense February half-term courses – including web design, family pottery and an art and design course for young people.

Go to www.wandsworth.gov.uk/psad. There's also a wide range of courses run by South Thames College.

Visit www.south-thames.ac.uk.

4 Take charge of your health with Active Lifestyles

New courses are continually being added to the Active Lifestyles programme. Classes planned for February and March include yoga, table tennis, badminton and dance.

Visit www.wandsworth.gov.uk/activelifestyles or call (020) 8871 6373.

5

Take part in the London youth games

Olympics champions Mo Farah, David Weir and Bradley Wiggins have all represented their borough at the London Youth Games.

Young people who enjoy sport can follow in their well-known footsteps and take part in this London-wide sports competition.

Trials and training events are taking place over the next few months.

Visit www.wandsworth.gov.uk/lyg or call (020) 8871 8390.

what's on?

WELCOME TO WHAT'S ON IN WANDSWORTH
YOUR GUIDE TO ART EXHIBITIONS,
THEATRE PERFORMANCES,
CHILDREN'S EVENTS AND
SOCIETY MEETINGS

Children's
events are
shaded
yellow



EVENTS FOR FEBRUARY-MARCH

February 5– April 7 (Wednesday-Sunday and Bank Holidays 11am-5pm)

D Eye Y

From tiny pictures taken by a monkey nut shell-made-camera to a pop-up dark room for developing the pictures, this exhibition presents the photographs taken during the project alongside cameras made from unusual objects as well as vintage cameras converted to produce an obscured and warped effect in the images. As part of the exhibition the artists are asking for your pictures of camera cases as animals. The work in-progress can be seen at cameracaseanimals.tumblr.com

Pump House Gallery, Battersea Park SW11. www.pumphousegallery.org.uk

How to be listed

To be included in the April/May edition send details (including access for people with disabilities) to:

whatson@wandsworth.gov.uk

or by post to:

What's on editor,
Room 231,
Town Hall,
Wandsworth High Street,
SW18 2PU
to arrive by Monday February 25.

We cannot guarantee that your entry will be inserted. This is a free service. The information in this guide has been provided by the advertisers themselves. Wandsworth Council accepts no responsibility for the accuracy of the information or for any event not organised by the council.

Free entry
Wheelchair access
Hearing loop

Saturday February 2 2-5pm

Valentine's Mosaics workshop

Learn how to mosaic and turn your hearts into brooches, pendants, coasters and decorations. Workshop led by mosaic artist Concetta Perot. **Cost £20 includes tutors and materials.** Pay on the day or book at www.craftypint.co.uk Tooting Tram and Social, 46-48 Mitcham Road, SW17. Email gillian@craftypint.co.uk or call 07792 776218

Wheelchair

Sunday February 3 Sunday February 10 9.30am-7pm

Best of Battersea

A selection of art works

current and archived by local artist Cecile Grant. St Mary's Church, Battersea Church Road SW11. Email office@stmarysbattersea.org.uk or call 7228 9648.

Tuesday February 5 1.05pm

Lunchtime opera recital

Free, but booking essential. National Opera Recital, 2 Chapel Yard SW18. Seat reservations email info@nationaloperastudio.org.uk or call 8874 8811.

Wednesday February 6 2-4pm

Volunteering Wandsworth

Meet the team and find out about volunteering. Drop in at any time during the two hours. Roehampton Library, 2 Danebury Avenue SW15.

Call 0300 365 9950. www.volunteeringwandsworth.org.uk

Thursday February 7- Sunday February 10 afternoon and evening performances

Arthur and the Knights of Camelot

The Magdalene Players St. Mary Magdalene's Church Hall, Trinity Road SW17. Box office 8874 8348. www.magplayers.org.uk

Wednesday February 13 3 - 6pm

Feed the 1000 event

Recycle Western Riverside working alongside the University of Roehampton and Chartwells will be holding this free event. The aim is to raise awareness of the amount of food waste

and to show students, staff and residents in Wandsworth how easy it is to cook and eat tasty food instead of throwing it in the bin. Suitable for all ages. University of Roehampton, Roehampton Lane SW15. Visit www.wrwa.gov.uk.

Thursday February 14 7.45 for 8pm

Shopping centres in Wandsworth

With chair Philip Whyte. Wandsworth Society, West Side Church, Melody Road SW18. Call 8870 4567. www.wandsworthsociety.org.uk

Wheelchair

what's

**Monday February 18
8pm**

Two hands, four hands
Dmitri Alexeev, the great Russian pianist and his wife and frequent duo-partner, Tatiana Alexeev, talk with Piers Lane.

Visitors £8, members and people under 18 free.

Putney Music Dryburgh Hall, Putney Leisure Centre, SW15.

win.carnall@btinternet.com

www.putneymusic.org.uk

Wheelchair

**Thursday February 21
11am-1pm and 2-3.30pm**

Bird Mask Making Day

Get inspired by a walk around the zoo's aviaries then come and join in the colouring and feather

sticking fun. **Entry fee £7.95 adult, £6.50 child (2-15 years).** Children must be with an adult Children's Zoo, Battersea Park SW11. Call 7924 5826. www.batterseaparkzoo.co.uk

Friday February 22, 8pm

The History of the London Underground

Speaker: Barry Lejeune, Friends of London Transport Museum. Wandsworth Historical Society, Friends Meeting House, 59 Wandsworth High Street, SW18. Non members welcome. Call 8874 6341. Email ngrobson@tiscali.co.uk www.wandsworthhistory.org.uk



**Friday February 1 – Saturday April 20
(open Tues-Fri 1-5pm,
Sat 11am-5pm)**

Evelyn De Morgan: The Lost Paintings

An exhibition of photographs and original studies and drawings for the Evelyn De Morgan paintings destroyed in an art store fire in 1991.

Admission £4, children free.

De Morgan Centre, 38 West Hill SW18. Call 8871 1144. www.demorgan.org.uk

**Monday February 18 – Friday
February 22**

**Half-term intensive art
courses**

Two- and three- day courses including digital design for silkscreen, web design using Wordpress, and creative photography. We are also running a parent (or grandparent) and child (aged 6-13 years) family pottery course. Courses just for young people include art and design course for 14-18 years and pottery on the wheel for people aged 13-17 years. Putney School of Art & Design, Oxford Road SW15. www.wandsworth.gov.uk/psad



**Friday February 22
7-9pm**

**Rotary Club fundraising
event at RCA Dyson
Building**

Drinks and canapés, with an exhibition. Excellent opportunity to view the building, thank the RCA for investing in Battersea and welcome RCA students to SW11. The Dyson Building, which is sponsored by the James Dyson Foundation, makes up the largest part of the RCA's new campus.

Cost £10. Tickets from jhallmark@wandsworth.gov.uk or 07798 684698.

Organised by the Rotary Club of Battersea Park. Battersea Society at Dyson Building, Battersea Bridge Road SW11. www.batterseasociety.org.uk

**Ends February 24
(Tuesday-Friday
10am-5pm, weekends
11am-5pm)**

Painting Wandsworth

Watercolours from 1770 to 1925. Wandsworth Museum, West Hill SW18. www.wandsworthmuseum.co.uk

**Tuesday February 26 –
Saturday March 2
7.45pm**

Out of Order

A Junior Minister risks hitting the headlines when his affair with the opposition leader's secretary threatens to be unmasked. Classic comedy.

Tickets £10, concession £7.

Putney Arts Theatre Ravenna Road SW15. Box office 8788 6943. www.putneyartstheatre.org.uk

**Wednesday February 27
(5 week course) 2-5pm**

Etching for beginners

Course cost £98, or £64 for residents 60+.

Putney School of Art and Design Oxford Road SW15. Call 8788 9145.

www.wandsworth.gov.uk/psad

**Thursday February 28
7.30pm**

Turban Myths

Ancient stories from The Ramayana and the Mahabharata, vibrant folktales from all over India, and two British Punjabi storytellers make Turban Myths, a unique storytelling event for adults, and young people aged 12+.

Tickets £13, concessions £9. Tara Arts Studio, 356 Garratt Lane SW18. Box office 8333 4457. www.tara-arts.com

**Friday March 1 11.30am
and 8pm**

**Women's World Day of
Prayer**

This year the service is prepared by the Christian women of France with the theme "I was a stranger and you welcomed me". All welcome – men, women and children. Refreshments after each service. 11.30am service at St. Margaret's Church, Putney Park Lane SW15; 8pm service at St. Mary's Church, Putney High Street SW15.

**Saturday March 2
2-5pm**

The art of decoupage

Bring in a lampstand, frame, box, small table or

magazine holder that you want to decoupage. Amelia Crtitchlow will provide imagery (wallpaper, maps, magazines, books), ideas and tips on the skill of decoupage. Cut and collage your chosen item to create a beautiful piece for your home. Cost £20 includes tutors and decoupage materials. Pay on the day or book at www.craftypint.co.uk. Tooting Tram and Social, 46-48 Mitcham Road, SW17. Email gillian@craftypint.co.uk or call 07792 776218

Wheelchair



**Wednesday March 27
7.30pm**

**Author Andrew
Motion**

The former Poet Laureate reads from his new collection, The Customs House as well as The Cinder Path, and will answer questions about the role of Poet Laureate and his writing.

Tara Studio, 356 Garratt Lane SW18. www.andrewmotion.co.uk

Tuesday March 12
10am-12pm

Volunteering Wandsworth

Meet the team and find out about volunteering. Drop in at any time during the two hours.
Battersea Park Library, 309
Battersea Park Road SW11.
Call 0300 365 9950.
www.volunteeringwandsworth.org.uk

Wednesday March 6
10-11.30am

Play and Development Session

For parents/carers with children with disabilities and special needs. For children 0-8 years. Runs every Wednesday during term-time.

King George's Park One
O'Clock Centre, Buckhold
Road SW18.

Call 8871 1865.

www.wandsworth.gov.uk/fis

Wheelchair

Saturday March 9
2-5pm (1pm sellers)

Table top sale

Admission 50p. To sell goods please book your table early (costs £10) by ringing Sam 8785 6328. Refreshments/parking.

St Paul's Community
Centre 23 Inner Park Road
SW19.

Monday March 11 8pm

Lecture: Denise Heywood: 'Legend and Lustre: Jim Thompson and Thai Silk'.

Visitors £7.

South-West London
Decorative & Fine Arts
Society Dryburgh Hall,
Putney Leisure Centre,
SW15. Phone 8789 0047.

March 11-28 7.30pm
(9pm on 27-28 March)

Ring

A unique theatrical experience where the performance takes place in darkness. The audience are given headphones, through which an immersive thriller places them in the centre of a

detached reality. **For ages 16 years+.** **Tickets £12, concessions £8.** BAC, Lavender Hill SW11. www.bac.org.uk/whats-on/ring

Sunday March 17
3-5pm (NCT cardholders
2.45pm)

Nearly New Sale

Babies and toddlers' clothes, toys and equipment. **Entry £2.** Putney Leisure Centre, SW15. To book a table or to advertise email potter.pamela@googlemail.com www.nct.org.uk

Wheelchair

Tuesday March 19,
7.30pm

Evening song recital
Curated by Iain Burnside.

Free.

National Opera Recital, 2
Chapel Yard SW18. Booking
essential – seat reservations
email
info@nationaloperastudio.org.uk or call 8874 8811.

Saturday March 23
7.30pm

Eastern European Choral Music

Programme includes
Janacek Otčenáš: Our
Father, Vierne: Messe
Solennelle and Kodaly:
Missa Brevis. **Tickets £12,
concessions £8.** Conductor:
David Fawcett.

Festival Chorus at St. Luke's
Church, Thurleigh Road
SW12. Box office 07951
791619 or tickets on the
door from Northcote Music,
155 Northcote Road SW11.
Book online
www.slms.org.uk



Wednesday February 20 – Saturday February 23 at 7.45pm
(5pm Saturday)

Road

Jim Cartwright's Road was written at a time when the UK was being run by an unpopular leader, and struggling in a recession. In 15 years has anything really changed? Tickets £10, concessions £7.50 (Wed and Sat). Southside Players Drama Hall, Chestnut Grove School SW12. Box office 07914 657524. www.southsideplayers.org.uk

Saturday March 23
7.30pm

Music for Easter and Passiontide

Including "Missa Aeterna
Christi Munera" by
Palestrina and "Magnificat
and Nunc Dimittis" by
Martin Everett. **Tickets £10,
concessions £8, children
under 15 years free.**

South West London Choral
Society, St Anne's Church, St
Ann's Hill, SW18.

www.swlcs.org.uk or email
boxoffice@swlcs.org.uk

Sunday March 24 7pm

Reading and wine event

Read out
your work
at this
supportive,
social event,
or just come
along for a glass of wine
and enjoy the reading on
offer. **Costs £5.**

Chalk the Sun at Balham
Bowls Club, 7-9 Ramsden
Road SW12. To book
creativewriting@chalkthesun.co.uk
or 07852 483001.
Wheelchair

Monday March 25 8-
10pm

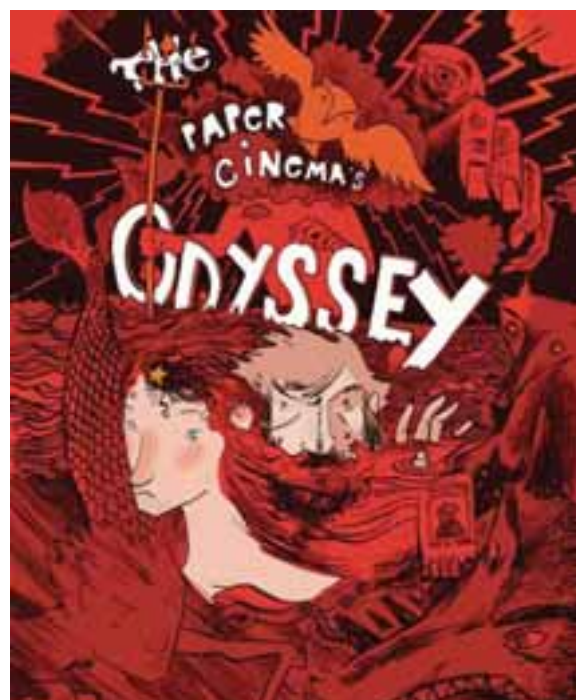
Pleasing all of the people (that's musicians too!)

Stephen Maddock, chief
executive of City of
Birmingham Symphony
Orchestra muses on the

pleasures and pitfalls of
running an orchestra.

**Members and young
people free, visitors £8.**
Putney Music, Dryburgh

Hall, Putney Leisure Centre,
SW15. Email
win.carnall@btinternet.com
www.putneymusic.org.uk



February 14 – March 9 7.30pm

The Paper Cinema's Odyssey

Raging storms and supernatural forces prevail over one man's quest to get home. Immerse yourself in a journey through the high seas, soak up the adventure and encounter danger and exhilaration. **Tickets £15, concessions £10.** BAC Lavender Hill SW11. www.bac.org.uk Call 7223 2223.

On your bike

Cycling is more popular than ever in Wandsworth. Here are some ways to make it easier, safer and more fun.



Free cycle training

Courses are available to children and adults who live, work or go to school or college in Wandsworth.

Go to www.wandsworth.gov.uk/cycletraining.

HGV awareness events

Sit in the cab of a heavy goods vehicle and see how the road looks from a driver's point of view.

Call (020) 8871 7983 or email hgriffin@wandsworth.gov.uk.

Beginners' bicycle maintenance classes

Learn how to keep your bike in good working order.

Call (020) 8871 7983 or email hgriffin@wandsworth.gov.uk.

Free Dr Bike safety checks

Dr Bike will check your tyres, wheels, frame, brakes, gears and chain, and will make sure your seat and handlebars are at the correct height.

Call (020) 8871 7983 or email hgriffin@wandsworth.gov.uk.

Use a cycle superhighway

There's one that goes from Wandsworth to Westminster.

Visit www.tfl.gov.uk/cycling.

Comment on Boris Bike sites

The Barclays Cycle Hire scheme is coming to the north of borough. Find out more at www.wandsworth.gov.uk/travelchoices.

Take part in an organised ride

These are held throughout the year. Go to www.tfl.gov.uk/cycling.

Meet like-minded people

The Wandsworth Cycling Campaign lobbies on behalf of local bike users and promotes cycling in the borough.

Visit www.wandsworthcyclists.org.uk.

Bike marking

The police safer neighbourhoods teams hold free bike marking events across the borough. It means you're more likely to get your bike back if it's stolen.

Visit www.met.police.uk/wandsworth/snt.

Option to pay your Council Tax bill in 12 monthly payments

From 1st April 2013 you can choose to pay your Council Tax over 12 monthly instalments. (April to March).

Direct debit payers will still have a choice of five payment dates in the month - 4th, 11th, 15th, 18th and 25th. Direct Debit is the preferred method of payment as it keeps Council Tax low and it is a quicker and more reliable way to pay.

Non direct debit payers will have instalment dates of 5th April followed by 1st of each month from May to March.

If you want to switch to 12 months for the financial year 2013/2014 you must email counciltax12months@wandsworth.gov.uk and include the following information:

- Name and Address
- Council Tax Account Number
- Your bank account name, account number and sort code, as well as which Direct Debit payment date you would like.

or telephone (020) 8871 8081 and have the above details to hand

You must submit your request by 20th February 2013

For any requests received after 20th February, we will be unable to stop the original annual bill being issued to you. Therefore a revised bill will be sent in April with your instalments spread over the remaining months of the year up to March.



AD:1056 (1.13)

>> WANDSWORTH CONNECTED >>

Talk to us online



weekly e-newsletter
www.wandsworth.gov.uk/24seven



www.twitter.com/wandbc



www.facebook.com/wandsworth.council



www.youtube.com/WandsworthBC

Doing it online

Using our website helps keep your council tax bills low

Pay your council tax

www.wandsworth.gov.uk/counciltax

Pay a parking fine

www.wandsworth.gov.uk/parking/payment

Apply for a parking permit/parking

www.wandsworth.gov.uk/parking

Join the e-library

www.wandsworth.gov.uk/libraries

Search planning applications

www.wandsworth.gov.uk/planningregister

Check your refuse collection day

www.wandsworth.gov.uk/refusemap

Request a housing repair

www.wandsworth.gov.uk/housingonline

Check local roadworks

www.wandsworth.gov.uk/info/569/roads-road-works

Other contacts at the council

Benefits Service

(020) 8871 8080
benefits@wandsworth.gov.uk

Carers information and support Wandsworth Carers Centre

(020) 8877 1200
info@wandsworthcarers.org.uk

Children's Social Work Service

(020) 8871 6622
cssduty@wandsworth.gov.uk

Consumer Protection

(020) 8871 7720
esd@wandsworth.gov.uk

Community Care Services

(020) 8871 7707
accessteam@wandsworth.gov.uk

Council Tax

(020) 8871 8081
counciltax@wandsworth.gov.uk

Education

(020) 8871 8013
edadmin@wandsworth.gov.uk

Electoral Services

(020) 8871 6023
electoral@wandsworth.gov.uk

Environmental Services

(020) 8871 6127
esd@wandsworth.gov.uk

Family Information Service

- including Nurseries
(020) 8871 7899
fis@wandsworth.gov.uk

Food Hygiene

(020) 8871 6139
esd@wandsworth.gov.uk

Fraud Hotline

0800 783 2263 (freephone)
fraudhotline@wandsworth.gov.uk

Graffiti Removal

(020) 8871 7049
graffiti@wandsworth.gov.uk

Health, care and wellbeing

(020) 8875 0500
acis@wandsworth.gov.uk

Home Ownership

(020) 8871 6016
housesales@wandsworth.gov.uk

Housing Advice

(020) 8871 6840
housingadvice@wandsworth.gov.uk

Housing Repairs and Tenancy

Call your area team or
management organisation
hms@wandsworth.gov.uk

Leisure Centres & sports

facilities
(020) 8871 8154
sportsservices@wandsworth.gov.uk

Libraries

(020) 8871 6369
libraries@wandsworth.gov.uk

Neighbourhood Watch

(020) 8871 7696
watchlinkmanager@wandsworth.gov.uk

Noise Complaints

- council properties
(020) 8871 7490
hms@wandsworth.gov.uk

private properties

(020) 8871 7869
esd@wandsworth.gov.uk

Parking

(020) 8871 8871
parking@wandsworth.gov.uk

Parks

(020) 8871 6347
parks@wandsworth.gov.uk

Rubbish, Recycling and Litter

(020) 8871 8558
wasteservices@wandsworth.gov.uk

Births, Deaths, Weddings

and Civil Partnerships
(020) 8871 6121
registeroffice@wandsworth.gov.uk

Youth Clubs

(020) 8871 7553
youthservice@wandsworth.gov.uk

Tell us what you think

You can post comments on all our news stories www.wandsworth.gov.uk/news

Make a complaint or comment on a council service

www.wandsworth.gov.uk/forms/form/166

Come to a Let's Talk meeting www.wandsworth.gov.uk/letstalk

Contact your local councillor www.wandsworth.gov.uk/councillors



Fostering Teenagers

Are you someone special, with room in your life, and your home? Whether you're married or single, gay or straight, a homeowner or renting, and whatever your cultural background, we'd like to hear from you if you're interested in fostering older children.

As well as a spare bedroom, you'll need to adapt and be flexible. Fostering is challenging and rewarding, but we offer lots of support, and enhanced fees and allowances to enable you to make a lasting difference to a teenager's life.

To find out more about looking after a Wandsworth teenager:

Visit our website

www.wandsworth.gov.uk/fostering

Visit our Facebook page

www.facebook.com/wandsworthfostering

Email carerrecruitment@wandsworth.gov.uk

Call (020) 8871 6666

You
don't have
to do
anything
extraordinary
to do something
Special

Discover the rewards of fostering

