

# Brightside

The magazine of Wandsworth Council

Issue 181 September 2017



New attractions at Battersea Park

More shared ownership homes

Electric car charging points go live

Remembering fallen heroes



Delivered to 140,000 homes - Balham Battersea Earlsfield  
Furzedown Putney Roehampton Southfields Tooting Wandsworth





# CAN YOU FOSTER?



**Fostering Information Event**  
**21 September 2017**  
**10-12noon or 2-4pm or 6-8pm**

Town Hall  
Wandsworth High Street  
SW18 2PU

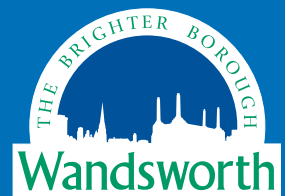
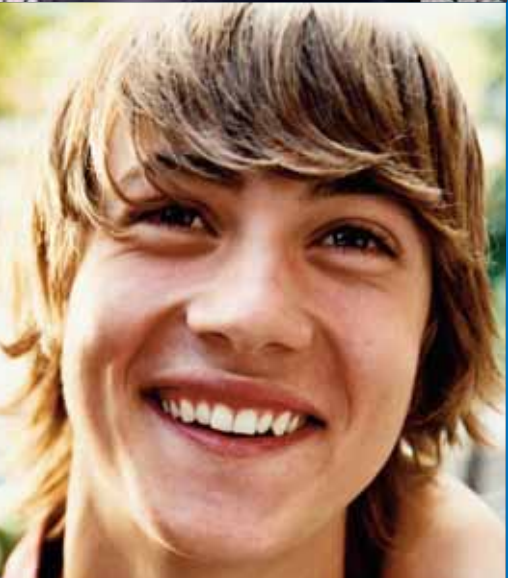


**Be there** for a child in Wandsworth...  
...and we'll **be there** for you

To find out more:  
visit [wandsworth.gov.uk/fostering](http://wandsworth.gov.uk/fostering),  
phone **(020) 8871 6666**

email [carerrecruitment@wandsworth.gov.uk](mailto:carerrecruitment@wandsworth.gov.uk)

 [wandsworthfostering](https://www.facebook.com/wandsworthfostering)





# The wonder of Wandsworth

**This summer the Office for National Statistics confirmed that Wandsworth is the most popular destination for people moving into our great city from elsewhere in the UK. But why is the Brighter Borough the number one choice?**

There is no single answer, but we do stand out from our neighbours in many different ways. We have some of the best local schools in the country, with 95 per cent rated 'good' or 'outstanding' by Ofsted, and we're blessed with a very high proportion of green open space. The council charges an exceptionally low tax rate, unemployment is low and we have the very lowest crime rate in all of inner London.

But our popularity comes with real challenges. As demand grows Wandsworth's house prices have spiralled and providing new housing is the number one priority for the council. Last year we completed the second highest number of low cost homes in London and we are now exploring ways of boosting our building programmes even further. Read more on pages 20-21.

Ensuring local services keep pace with a growing population is another challenge, and this is especially hard while council funding continues to fall. In response Wandsworth has broken

new ground by sharing its workforce, infrastructure and buying-power with neighbouring Richmond Council in a move that saves both councils around ten million pounds each year. Making major back office savings means Wandsworth can buck the national trend and expand key services like our libraries and fly-tip enforcement programmes.

And Wandsworth comes out on top in lots of other ways. We were the first borough to protect our pubs from redevelopment and in Nine Elms we have the UK's biggest regeneration programme with the likes of tech giant Apple and the US Embassy moving in. We're also remarkable for having the fastest growing cycling rate in the UK, which has risen to the fifth highest in the entire country.

But of all Wandsworth's unique features it is our diversity and openness that I value the most. No matter how our communities change and evolve the borough remains welcoming, positive and full of the creative energy that makes London great. This is an exceptional place to live and work and the council is striving hard to make it even better.

**Ravi Govindia, leader of Wandsworth Council**

**Inside**  
September 2017

[www.wandsworth.gov.uk](http://www.wandsworth.gov.uk)

Cover photo: Brand new playground in Battersea Park, see page 6.

Supporting EU nationals	4	Wandsworth gets results	16-17
Sprinklers for council blocks	5	Homeownership help	20-21
Battersea riverbus	7	Remembering heroes	22-23
Wandsworth Local Fund	9	Get ready for winter	24
Rogue landlord crackdown	10	Dignity in social care	26
Putney pollution falls	12	What's On	27
Business support	15	Help find carers	30



# EU nationals need “absolute clarity”

**Council leader Ravi Govindia has called for European nationals to be given “absolute clarity” over their future status in the UK and has praised their great contribution to life in Wandsworth.**

In a letter to Theresa May, Cllr Govindia has urged the Prime Minister to make this aspect of the ongoing EU

negotiations her top priority.

The Government has published a white paper setting out an offer for UK based EU citizens to continue living here as they do now, with continuing rights to healthcare, education, benefits and pensions. These terms are now being negotiated with Member States of the EU. While talks continue

Cllr Govindia has instructed council officers to develop proposals for advising European citizens on their rights and how the Government’s proposals could affect them.

To keep up to -date sign up for e-news alerts at

[www.wandsworth.gov.uk/e-news](http://www.wandsworth.gov.uk/e-news)

## First step for Battersea housing estates revival

**The regeneration of the Winstanley and York Road housing estates has taken an important step forward with work now underway on the first ‘satellite site’ in Rowditch Lane where six new homes are being built.**

These properties will be offered to estate residents who need to move ahead of the first phase of the building programme when the first post-war blocks will be replaced with new housing.

Every secure council tenant and owner-occupier who needs to move during the redevelopment process is guaranteed a brand new home on the estate as soon as they are built. This means the existing community can stay to enjoy the improved neighbourhood.

This ambitious long-term project will provide approximately 2,275 new homes in total, including additional new council homes as well as shared

The outline concept design for a combined leisure, community, library and children’s centre.



ownership and affordable rent properties.

A new combined leisure, community, library and children’s centre is also planned, with a redesigned park, shops and business space, with employment and training opportunities for local people.

The project is being delivered in partnership between Wandsworth Council and Taylor Wimpey.

Find out more at [www.wandsworth.gov.uk/winstanleyyorkroad](http://www.wandsworth.gov.uk/winstanleyyorkroad)

To obtain a copy of Brightside in large print or audio version please telephone (020) 8871 7266 or email [brightside@wandsworth.gov.uk](mailto:brightside@wandsworth.gov.uk)

### Your Brightside

Your Brightside is distributed by London Letterbox Marketing. We expect all copies of Brightside to be delivered to every home in the borough and pushed fully through the letterbox.

It is produced by the council’s corporate communications team. It is the only publication delivered to every household in the borough. We would like to thank all our advertisers for their support. Brightside will consider display advertisements from non-council bodies (excluding recruitment) and reserves the right to decline advertisements. The council neither accepts responsibility for the content of nor endorses any non-council advertisements.

- Editorial (020) 8871 8902
- Advertising (020) 8871 7266

If you have a comment about the magazine please telephone: (020) 8871 8902/6173 or email: [brightside@wandsworth.gov.uk](mailto:brightside@wandsworth.gov.uk).

Brightside is printed on environmentally friendly paper, please recycle.

# Sprinklers for 6,400 homes

One hundred council-owned high-rise blocks in Wandsworth are to be fitted with sprinklers in the wake of the Grenfell Tower disaster. The council will install sprinklers in all of its blocks of ten storeys and above, protecting some 6,400 homes.

Housing spokesman Cllr Claire Sallier said: "The tragic events at Grenfell Tower have brought this issue into sharp focus and although we do not believe there is a specific risk to our tower blocks we're not prepared to take a chance. We will be fitting sprinklers to all these flats as quickly as possible so that residents can be reassured that everything that can be done is being done to protect them, their families and their homes."

Former Wandsworth Fire Commander Darren Munro added: "I very much welcome this announcement. This is a big commitment from Wandsworth and we will continue to work closely with the council to make sure the borough and its residents are as safe as possible."

Tower blocks residents can reduce fire risks by:

- Regularly checking your smoke alarm. If it's not working contact the council and it will be replaced free of charge
- Keeping balconies free from clutter
- Not leaving rubbish or bikes in communal areas or obstructing escape routes
- Making sure you know where your nearest fire exit is
- Not smoking in common areas of the block
- Fully extinguishing cigarettes and disposing of them carefully and safely



## HAVE YOU RESPONDED

## TO YOUR HOUSEHOLD

## VOTER FORM?

The Borough Council Elections are taking place on Thursday 3rd May 2018.

All households in the borough have been sent a Household Enquiry Form asking for confirmation of who is eligible to vote.

You can respond **online**, by **phone** or by **text!**

Council staff will start to chase up non-responders soon, so respond now to avoid a visit!

Anyone not registered to vote should visit [gov.uk/register-to-vote](http://gov.uk/register-to-vote)

Registering can improve your credit score!

**YOUR VOTE MATTERS**

**DON'T LOSE IT**



AD.1174 BSide (8.17)

**NHS**

**Wandsworth**  
Clinical Commissioning Group

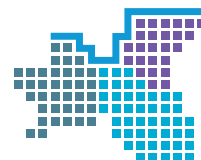
## Interested in local health services? Join us for our Annual General Meeting

**Wednesday 20 September 2017**  
**2pm – 4.30pm**

NHS Wandsworth CCG offices,  
73 Upper Richmond Rd,  
East Putney, London SW15 2SR

To register your place visit  
[wandsworthagm2017.eventbrite.co.uk](http://wandsworthagm2017.eventbrite.co.uk)

For more information please contact Chan Maher:  
[chan.maher@wandsworthccg.nhs.uk](mailto:chan.maher@wandsworthccg.nhs.uk)  
or telephone 020 8812 6741



[www.wandsworthccg.nhs.uk](http://www.wandsworthccg.nhs.uk)



# New attractions on the way at Battersea Park

Having just retained its coveted Green Flag Award and opened a brand new £150,000 children's playground, the list of attractions at Battersea Park continues to grow.

Staging the Formula E electric motor racing championships in the park for two years raised £500,000 for park improvements plus £2.5m for other frontline local services. A further £250,000 has been levied from the developers of the neighbouring Battersea Wharf and Chelsea Bridge Wharf housing schemes, with an additional sum pledged by amenity group the Friends of Battersea Park. This money will pay for:

- A new garden - The Promontory is an unused area east of Albert Bridge which juts into the river by around 12m which is about to be transformed into an attractive new landscaped garden.
- Cascade fountain restoration project – The cascades are an important and prominent historic landscape feature which can't be switched on at the moment. A sum of £160,000 has been pledged to bring them back into use.



- Restoration of seating shelters – Three historic shelters are being refurbished with new seating and substantial structural and decorative renovation.

Other projects are also being drawn up to utilise another £260,000. A similar sum is being spent on maintaining the park's river wall.

For more information visit

[www.wandsworth.gov.uk/batterseapark](http://www.wandsworth.gov.uk/batterseapark)

## Ernest Bevin College Open Events 2017



**Open Mornings**  
Friday 29th September & Thursday 5th October 9am-11am  
Tours 9-10.20am then a chance to speak to the Principal and other senior leaders.

**Open Evening**  
Tuesday 3rd October 5.30-8pm  
Pupil-led tours and Principal's talk at 6pm & 7pm.

**Sixth Form Open Evening – Tuesday 3rd October 5.30-8pm**  
Talk by Head of Sixth Form and a chance to talk to subject teachers, and tour the college.

Beechcroft Rd, Tooting, London SW17 7DF Tel. 020 8672 8582  
mail@ernestbevin.london

[www.ernestbevin.london](http://www.ernestbevin.london)



## EARLY EDUCATION FOR 3 AND 4 YEAR OLDS



### Are you a working parent?

You may be able to claim up to 30 hours funded Childcare from September 2017.

Find out more at  
[www.wandsworth.gov.uk/30hours](http://www.wandsworth.gov.uk/30hours)





# All aboard the riverbus

**This Autumn will see Wandsworth's fourth passenger pier open for business at Battersea Power Station, giving thousand of local people easy access to the fast growing riverbus service.**

MBNA Thames Clipper catamarans will be calling at the pier seven days a week, offering quick journey times into central London.

Wandsworth Council has long supported the expansion of riverbus services and has used its planning powers to secure the new passenger piers at Plantation Wharf (which opened in 2015) and at the power station site.

For more information about London's river bus services including fares, routes and timetables visit

[thamesclippers.com](http://thamesclippers.com)

# Time to Quit!

With professional help you are 4 times more likely to quit smoking for good.

**Find out more about support through your GP, pharmacy and our drop-in clinics contact the FREE Wandsworth Stop Smoking Service**

Call the 24 hour freephone on 0800 389 7921 or email: [stopsmoking.team@wandsworth.gov.uk](mailto:stopsmoking.team@wandsworth.gov.uk) visit: [www.wandsworth.gov.uk/stopsmoking](http://www.wandsworth.gov.uk/stopsmoking)

**SMOKEFREE WANDSWORTH**

**THE BRIGHTER MORNING Wandsworth**

## Battersea Park Children's Zoo... who will you see?

**Battersea Park Children's Zoo**

From cheeky monkeys to leaping lemurs, noisy otters to snuffling coatis, who will you come face to face with?

**PLUS** our fun play area for kids of all ages!

Visit our website **Tel: 020 7924 5826** Battersea Park, Chelsea Bridge Gate Battersea London SW11 4NJ

**[www.batterseaparkzoo.co.uk](http://www.batterseaparkzoo.co.uk)**

*we're passionate about wildlife*





The project has included a chance for local people to study for a bespoke Level 1 City and Guilds Diploma in Land Based Studies (Environmental Conservation).

# Heritage restoration for Tooting Common

## Restoration of some of Tooting Common's most treasured landmarks and natural habitats is now well underway.

The Heritage Lottery Fund has provided a £1.4m grant to pay for the restoration of the common's lake, its valuable and rare acid grassland habitat, the 1930s drinking fountain and the replanting of the historic Chestnut Avenue.

Tooting Common covers 220 acres, making it the largest open space in the borough and is home to more than 3,000 trees.

The work to the grasslands will help recreate a rare and delicate habitat for invertebrates like butterflies and grasshoppers and work at the lake is designed to make it more welcoming for aquatic life, birds, insects and plants.

The Woodfield Pavilion is being refurbished to provide toilets and meeting space for community groups, while dozens of new semi-mature trees are to be planted along Chestnut Avenue to replace the declining horse chestnuts which are approaching the end of their natural lives.

As well as restoring ancient habitats and boosting biodiversity, the heritage scheme is offering new volunteering opportunities for local people and improving their job and life skills.

It will also see the compilation of 'The Common Story' - a project that is working with volunteers to unravel some of Tooting Common's historical mysteries and provide research and archive training to those taking part.

## Fresh consultation for Alton Estate plan

A fresh round of consultation on regeneration of the Alton Estate in Roehampton will get underway in September as the council and its development partner Redrow ask for feedback on the latest scheme proposals.

In the coming years this project will see around 1,000 new homes built, including new council and shared ownership properties. There are also plans for a range of improved facilities including a new library and shopping area, a children's centre and improvements to green spaces and the public realm.

All secure council tenants and owner-occupiers who need to move during the redevelopment programme are guaranteed a brand new home on the estate and can access a package of support to make the moving process as easy as possible.

As a condition of appointment Redrow will provide local residents with a range of job, training and apprenticeship opportunities which will be offered through the council's Work Match local recruitment team.

The feedback received during this fresh consultation will inform a planning application which is expected to be submitted next year.

Find out more at

[www.wandsworth.gov.uk/roehampton](http://www.wandsworth.gov.uk/roehampton)

## Anyone for tennis?

People inspired by Wimbledon can improve their serve and volley skills on local tennis courts boosted by a £500,000 investment. All Star Tennis has upgraded 28 courts on Wandsworth Common, Tooting Common, King George's Park, Wandsworth Park, Furzedown Rec in Tooting and Leader's Gardens in Putney.

Meanwhile swimmers at Tooting Bec Lido can also use a new £900,000 fitness pavilion, paid for by the council, South London Swimming Club and Sport England.

Visit [www.wandsworth.gov.uk/sport](http://www.wandsworth.gov.uk/sport)



# Wandsworth Local Fund powering neighbourhood projects

**Another wave of neighbourhood improvement schemes to the tune of almost £2m has been given the green light, including upgrades to road, parks, streetlights and playgrounds.**

New projects due to start in the coming months include improvements to Falcon Park in Battersea and Leader's Gardens in Putney, upgrades to the Chivalry Road, St Mark's and Windmill Gardens play spaces and street improvements to Tours Passage and Lydden Twilley.

There will also be more money for Battersea Arts Centre, and the historic mounting block in Putney Vale Cemetery will be re-sited and the gates renovated.

The money comes from the Wandsworth Local Fund (also known as the Neighbourhood Community Infrastructure Levy), a charge the council makes on developers to pay for new and improved infrastructure. In the last two years almost £8m has been raised this way.

Local people are encouraged to visit the WLF website and then contact their local ward councillors to discuss potential schemes within their area.

For more information on the Wandsworth Local Fund visit

[wandsworth.gov.uk/WLF](http://www.wandsworth.gov.uk/WLF)

To find out who your ward councillors are visit

[wandsworth.gov.uk/councillors](http://www.wandsworth.gov.uk/councillors)

## School application deadlines

The deadline to apply for a place in a Wandsworth secondary school is October 30. The primary school deadline is January 15.

Ofsted has rated 95 per cent of Wandsworth's schools as good or outstanding, one of the best borough-wide quality ratings in the country. Find out how to apply at

[wandsworth.gov.uk/admissions](http://www.wandsworth.gov.uk/admissions)

## Nominate a local hero

The Wandsworth Civic Awards, run by the Mayor of Wandsworth, shine the spotlight on people who have volunteered their time to help others in their community, including charity workers, community activists or just someone who acts as a helping hand to friends or neighbours.

To find out more or nominate someone for this year's award, visit

[wandsworth.gov.uk/civicawards](http://www.wandsworth.gov.uk/civicawards).

The deadline for nominations is October 17.



## Green light for new Battersea NHS Health Centre

**North Battersea is a step closer to having a new NHS health centre after the council committed £13m to the scheme using Wandsworth Local Fund money collected from private development sites in Nine Elms.**

The new state-of-the-art health facility will be built in Sleaford Street, within Battersea Power Station's Phase 4a

development. It is expected to open in 2020-21, providing GP and other healthcare services to thousands of existing local residents as well as new arrivals to the rapidly growing area.

Find out more about Nine Elms at

[nineelmslondon.com](http://www.nineelmslondon.com)

# Crackdown on rogue landlords

**Privately rented properties are to be inspected by the council as part of a drive to improve standards – with fines for landlords who flout the law.**

New legislation requires landlords to pay for a licence from the council if they let a property to five or more people making up more than one household.

The Government is expanding the definition of a House in Multiple Occupation (HMO), including accommodation above and beneath commercial premises.

The new, broader definition means more homes in the borough will require inspection by officers to ensure national safety standards are met before an HMO licence can be issued.

CLr Clare Salier, Cabinet Member for Housing, said: "It's important that tenants and landlords are aware of both their rights and responsibilities - we won't hesitate to take action against those who break the law."

A Tooting landlord was prosecuted by the council recently and ordered to pay a fine and court costs of several thousand pounds for neither applying for a licence nor providing gas and electrical safety documentation while renting to tenants.

The council employs a team of officers to help ensure tenants live in well maintained accommodation, and to help landlords provide a high quality service.

Find out more at [www.wandsworth.gov.uk/privatehousing](http://www.wandsworth.gov.uk/privatehousing) or [www.londonlandlords.org.uk](http://www.londonlandlords.org.uk)



## Sensory garden blooms

A new sensory garden at the Church Lane complex needs centre in Tooting for adults with learning disabilities has been officially opened following a major fundraising drive.

The centre is part of the Adult Learning Disability Day Service, run by the charity One Trust on behalf of the council. The town hall provided £36,000 towards the garden and the other half of the cost was raised through the Tesco Bags of Help Scheme, Postcode Local and the Gregg's Foundation. Design, tendering and fundraising support was provided by Groundwork.

# Elite graduates



**Seventeen young women aged between 14 and 17 were guests of honour at Wandsworth Town Hall this summer as they celebrated graduating from Street Elite - an innovative youth development programme which uses the power of sport to build aspiration and self belief.**

Activities were based around sports coaching, helping to build confidence and teach valuable leadership and team working skills. The young women involved were identified by the council's youth service, schools or parents as being at risk of falling out of education and in need of fresh inspiration and support to get back on track.

The course is a partnership between Change Foundation, Berkeley Foundation and Wandsworth Council. Find out more at [www.street-elite.org](http://www.street-elite.org)



# Help pin point flytip criminals

The council's enforcement teams are cracking down on the small minority of people who make a mess on local streets and are asking local residents to help them pinpoint repeat offenders.

In June, enforcement officers issued 363 fines for littering, 17 fines for littering from a vehicle and successfully tracked down and fined 12 flytippers. The team also takes action against businesses that don't properly manage their waste and issued 134 penalty charge notices to local traders during the same month.

Enforcement officer Jeanette Mahoney (pictured right) said:

"Flytipping is a crime that can cause real distress and anger.

We regularly speak to local people who love their area but feel its being degraded by those who simply dump waste out in public when it suits them.

"If you can help to identify a flytipper then please contact us in confidence. Many successful investigations stem from the intelligence provided by local people and enforcement action can often stop a repeat offender for good."

Contact the team in confidence at [flytipwitness@wandsworth.gov.uk](mailto:flytipwitness@wandsworth.gov.uk)



## Linking volunteers with charities

Link Up Battersea, which connects local people with professional skills to local charitable organisations, is looking for more volunteers. Skills currently in demand include marketing, legal, finance, human resources, web design, photography, video production, writing and project management.

HR professional Pelin Buyuksarac (pictured) was matched with Wandsworth Citizens Advice, which needed help reviewing and updating its HR policies. She said: "I was able to use my skills to help an organisation working to improve the lives of those in need, and the experience has improved my confidence in my abilities." Find out more at [linkup-battersea.org](http://linkup-battersea.org).

## The 'go to' borough

Wandsworth is the "go to borough" for people moving to London from the rest of the UK, according to the Office for National Statistics. Last year 13,105 Britons left other parts of the country to seek their fortunes in Wandsworth, making it the capital's most popular destination.

A low council tax rate, superb schools, green open spaces and low crime rate are among the borough's top appeals.

## Get ready for Tootopia

The food, drink and culture festival that's saluting Tooting is on September 22-24. The Tootopia Fringe features live performances including comedy and cabaret, plus there's activities for kids and a street food takeover.

Visit [tootopia.co.uk](http://tootopia.co.uk)



## HELP

### #KeepWandsworthClean

- Always present your waste and recycling bags on the correct collection day [wandsworth.gov.uk/waste](http://wandsworth.gov.uk/waste)
- Report flytips on the council website [wandsworth.gov.uk/flytipping](http://wandsworth.gov.uk/flytipping)
- Set up your own Environment and Attractive Neighbourhood project with support from Wandsworth Grant Fund. Visit [wandsworth.gov.uk/wgf](http://wandsworth.gov.uk/wgf)

Working with you to  
#KeepWandsworthClean





Older, more polluting buses have been replaced by cleaner vehicles.

# Provisional data indicates fall in Putney pollution

**Provisional data from both of Wandsworth Council's pollution monitoring stations on Putney High Street indicate a major fall in pollution episodes as years of sustained investment in the bus fleet takes effect.**

Between February and June this year the EU's hourly nitrogen dioxide (NO<sub>2</sub>) objective was exceeded six times at the kerbside pollution monitor, compared to 742 times during the same six month period in 2016 and 640 times in 2015.

The council's other high street monitoring station, which is mounted to a building façade further from the traffic, recorded zero hourly pollution episodes since the start of February. This compares to 200 last year and 135 times in 2015.

Back in 2012 there were 1,213 pollution episodes during this six month period so this year's provisional figure would represent a 99 per cent fall.

Councillors stress that the data is provisional at this stage and that there is still more work to be done before residents

are breathing consistently clean and healthy air.

The fall in pollution coincides with the introduction of cleaner buses along the street which have been put into service here since the council's unique research project exposed the bus fleet as responsible for over 80 per cent of nitrogen dioxide build ups.

The former Mayor of London put Putney to the front of the queue for clean bus investment in 2012 and the current Mayor continued this policy. The street was rebranded as a 'low emission bus zone' in March this year.

However concerns have been raised about older polluting diesel buses being swapped onto other local routes, rather than being upgraded or replaced.

Deputy council leader Jonathan Cook said:

"It looks like our campaign to ban polluting buses from Putney High Street has had a major impact and our ban on daytime deliveries could also be a

significant factor in cutting the congestion which contributes to pollution build ups.

"While this looks like very positive news we can't accept older polluting buses simply being switched to other routes and we want assurances from the Mayor that this won't happen again. Trading one community's health for another's is wrong and we want to be sure that polluting buses are being taken off our streets altogether."

Wandsworth Council argues that the complete removal of diesel buses from London's streets should be the top priority for the Mayor of London's air quality strategy.

The council is now pushing for the removal of diesel buses from other pollution hotspots within the borough, including parts of Clapham Junction and Tooting where buses represent a high proportion of the traffic flow.

Find out more at

[www.wandsworth.gov.uk/airquality](http://www.wandsworth.gov.uk/airquality)





## Get into catering with Work Match

**Are you interested in a career in catering or hospitality, or maybe you already work in these industries and want a new challenge? Then Work Match wants to hear from you.**

As the regeneration of Wandsworth continues and restaurants, bars, hotels and coffee shops move in, hundreds of new jobs are being created.

The council's Work Match recruitment services is working hard to make sure local people are first in the line to make the most of these opportunities.

Work Match is asking businesses what skills their staff need, and then training up local people accordingly. They can then match Wandsworth job seekers to job vacancies, and help them apply and prepare for an interview.

Get in touch with Work Match for training in customer service, serving non-alcoholic cocktails, becoming a barista, food hygiene and health and safety.

[www.wandsworthworkmatch.org](http://www.wandsworthworkmatch.org)

# Help slow down speeding drivers

**Wandsworth now has a 20mph speed limit in all its quieter residential neighbourhoods and you can help the police tackle motorists that drive too fast by taking part in a Community Road Watch scheme.**

The scheme gives residents the opportunity to work alongside local police teams by using handheld speed cameras to identify vehicles breaking the limit. Warning letters will be issued where appropriate and the information can help police teams target hot spots.

To volunteer or to suggest a location where there are concerns about excess speeds  
email: [CommunityRoadwatch@met.police.uk](mailto:CommunityRoadwatch@met.police.uk)



# Apply now for council grants

The next round of the Wandsworth Grant Fund will open this month and local community and voluntary organisations are urged to get their applications ready.

The fund supports the work of local not-for-profit organisations, including projects to support the arts, smarten up neighbourhoods, help young people, improve people's health and encourage good citizenship and civic engagement.

The most recent round of funding in June saw £114,000 shared between a wide range of projects including schemes to keep young people away from crime, youth support services and help for homeless people and people with Sickle Cell Disease. Read about two recent recipients (right).

Find out how to apply at [www.wandsworth.gov.uk/wgf](http://www.wandsworth.gov.uk/wgf)



The **Young DeafHope Project** works with deaf young people age 11-30 at highest risk of abuse. Deaf IDVAs (Independent Domestic Violence Advocates) provide crisis support to deaf victims and their families, and community outreach to help rebuild lives.

Funding from the Wandsworth Grant Fund is enabling the Young DeafHope team to provide workshop sessions about domestic abuse for deaf young people through signed/accessible information at Oak Lodge School, deaf Units at hearing schools and deaf clubs in Wandsworth. Visit [www.signhealth.org.uk](http://www.signhealth.org.uk).

Investing in the  
Brighter Borough



**Aspire2inspire Dyslexia**, which helps local adults and children with dyslexia, has been supported by the Wandsworth Grant Fund. It supports and assesses children and encourages entrepreneurship amongst dyslexic adults and holds events to raise awareness and inspire dyslexic people to achieve.

One of the children receiving one-to-one support from the charity, Harry Brown, is taking part in a 5K run next month to raise funds for its work. Visit [www.justgiving.com/crowdfunding/a2idyslexiafundraising](http://www.justgiving.com/crowdfunding/a2idyslexiafundraising)



# Your Business Your Growth



Supporting business development and growth  
for all businesses in Wandsworth

## Take your business to the next level

**Wandsworth businesses can benefit from a package of support this autumn as the council's Your Business Your Growth support package continues.**

**Wandsworth Foodies** helps local food and hospitality companies start up and grow, providing workshops, advice on financing, selling and branding, trial trading opportunities and one-to-one advice sessions. The programme is to be expanded to help more local entrepreneurs.

There will also more chance for all types of businesses and start-ups to access **Networking Wandsworth** business advice clinics delivered by Branduin Business Support in partnership with the Wandsworth Chamber of Commerce. Support subsidised by the council includes workshops on key business development areas, mentoring and one to one coaching.

Specialist support and networking is available for digital and tech companies from **Wandsworth Digitech**.

To book your place now on the Next in Tech conference in the Wandsworth Civic Suite on October 5 visit [wandsworth.gov.uk/Nextintech](http://wandsworth.gov.uk/Nextintech).

The **Supply Nine Elms** programme delivers workshops, advice sessions and meet the buyer events for firms that want to target the Nine Elms regeneration area.

Find out how the team can help you at [www.wandsworth.gov.uk/yourbusinessyourgrowth](http://www.wandsworth.gov.uk/yourbusinessyourgrowth)

campaigns | branding | brochures | flyers | adverts | banners | newsletters | digital | signage | forms | and more

WANDSWORTH  
**Design  
& Print**

your message, brought to life.

[www.wandsworthdesignandprint.com](http://www.wandsworthdesignandprint.com)

[wdp@wandsworth.gov.uk](mailto:wdp@wandsworth.gov.uk)

020 8871 7508

Part of Wandsworth Trading Company

# Wandsworth Gets Results

Wandsworth is committed to being an Open Council, making it easy for residents to find out how we spend your money and how good we are at delivering services. Every year in this Scorecard we let you know how we are performing on a selection of key indicators which matter most to local people.

We are one of the few councils in London to show you how we perform compared with all other London councils – visit [www.wandsworth.gov.uk/opencouncil](http://www.wandsworth.gov.uk/opencouncil) to see for yourself and give us feedback on how we are doing.

## OUR PERFORMANCE SCORECARD

### How well do we deliver high quality, value for money services?

Indicator	2015-16	2016-17	Comment	Improved
Percentage council tax collected	98.5%	98.6%		✓
Percentage business rates collected	99.8%	99.6%	Wandsworth is the best performer in England.	✗
Percentage new benefit claims made online	76.9%	85.3%		✓
Percentage annual resident parking permits applied for solely online	88.7%	92.2%	Our online service saves time and money processing permits and residents do not have to visit the town hall.	✓

### Have we improved opportunities for children and young people?

A comprehensive plan to improve performance of children's social services is in place following an Ofsted inspection in 2015. Progress against this plan has been externally monitored by Ofsted who have conducted 4 visits during which they have reviewed different parts of the service. All visits have shown positive progress.

Number of first time entrants into the youth justice system per 100,000 population aged 10-17.	407	300		✓
Children with a child protection plan receiving regular social worker visits.	92.4%	89%	The number of children requiring a visit has increased by 32% since last year. This increased pressure has caused performance to decline slightly but visits are closely monitored to ensure all vulnerable children are seen within the timescales.	✗
Children with child protection plans that have ended in the year, whose plan lasted for two years or more.	0.4%	0%		✓
Average time between a child entering care and moving in with their adoptive family.	595 days	624 days	Adoption practice changed in 2013. When pre-2013 cases are excluded, the average time is now a much improved 420 days, meeting the national standard.	✗
Former care leavers who were in education, employment or training at age 19-21.	45%	50%	A project working with care leavers is helping to provide more opportunities and support.	✓
Children Looked After with one or more fixed term exclusion.	13.0%	10%		✓
Percentage of episodes of young people going missing where they received an independent interview on their return.	36.3%	53.7%	At the end of March 2017, the RHI accepted was at its highest level. Work is continuing to try to improve the RHI acceptance rate.	✓
Percentage of Child and Family Assessments which took over 45 working days to complete.	16.2%	23.9%	A 21% increase in the number of assessments since last year has affected timescales. First three months of 2017/18 show improvement.	✗
Key Stage 4 - Average Attainment 8 score.	New for academic yr 15/16	52.1	Wandsworth schools performed above the London and national average.	—
Percentage in Year Group 12-13 participating in education or training.	94.8%	93.9%	Performance has improved since the end of the year and is higher than the national and London averages.	✗
Apprenticeship success rate.	67.9%	67.5%	Similar trend to last year and a positive sustained increase since 2013-14.	✗



## Are we making Wandsworth an attractive, safe, sustainable and healthy place?

Indicator	2015-16	2016-17	Comment	Improved
Violence with injury per 1,000 population (non domestic in nature)	4.99	4.79	Wandsworth was the safest in Inner London in 2016/17	✓
The percentage of household waste recycled, composted or reused	21.1%	21.6%		✓
The percentage of Wandsworth residents who cycle as main mode of transport	5%	4%	Although the proportion decreased, the total number of cycle journeys actually increased.	✗
Percentage of council homes meeting or above the Government's decent homes standard	100%	100%		—
Number of times people used swimming pools and leisure centres for every 1000 residents	11,120	10,928	A slight dip in overall numbers. First three months of 2017/18 show improvement.	✗

## Are we promoting health, independence and wellbeing for all adults with personalised and preventative care and support for adults in need (including housing need)?

The weekly rate of delayed transfers of care from all hospitals per 100,000 residents	1.82	1.72		✓
Satisfaction of service users with their care and support (Survey based)	61%	60%		—
Percentage of people aged 65+ who achieved independence through rehabilitation and intermediate care following a stay in hospital	84.9%	92.9%		✓
Percentage of adults with learning disabilities in settled accommodation.	71.5%	72.3%		✓
% clients on Direct Payments (snapshot)	27.7%	30.0%		✓
Rate of admissions of older people into residential and nursing care per 10,000 population.	317.1	371.6	Performance places Wandsworth in top half of London Boroughs. First three months of 2017/18 show improvement.	✗
The number of properties where major disability adaptations have been completed	155	189		✓
Percentage of care service users receiving a review of their services and support	78.3%	81.7%		✓
The number of private sector long term vacant dwellings returned to occupation due to council action	40	65		✓
Number of households living in temporary accommodation	1309	1571	The increase is due to a combination of continued homelessness demand and a lower than expected supply of properties.	✗

## Are we building a prosperous, vibrant and cohesive community?

Number of shared ownership homes sold across Wandsworth	311	303	Nearly 1,000 shared ownership homes have been built in Wandsworth over the last 5 years with another 800 forecast to complete in the next 3 years. Nearly 90% of shared ownership sales last year went to those living and/or working in Wandsworth.	✗
Percentage change year on year in number of active businesses trading in Wandsworth.	5.47%	7.17%		✓
Average time taken in weeks to determine planning applications	9	9		—
Number of local people to secure jobs or training through the council's Work Match team since its launch in September 2013	468	670		✓
Wandsworth's unemployment claimant rate	1.4%	1.0%		✓

# You can now **RECYCLE** all of these items from your **BATHROOM**



Remember to remove and put trigger spray  
and pump dispenser tops in your rubbish bin



[www.wandsworth.gov.uk/recycling](http://www.wandsworth.gov.uk/recycling)







# Charging points go live

The first wave of new electric vehicle charging points go live this September as the council begins a major expansion of the borough's green infrastructure network.

A total of 35 charging points will be installed across 11 different locations as follows:

Street	Charging points
Brudenell Road, Tooting	3
Haldane Place, Wandsworth	5
Openview, Earlsfield	3
Rectory Lane, Tooting	3
Prince of Wales Drive, Battersea	3
Bramfield Road, Wandsworth Common	2
Clonmore Street, Southfields	3
Sistova Road, Balham	3
Grant Road, Battersea	5
St Johns Avenue, Putney	3
Coverton Road, Tooting	2

By the end of the year there will be over 100 charging points in operation as the roll-out continues. They will all be part of the Source London network which allows members to power up their vehicles at hundreds of other locations around the city.

The expansion comes as more local people begin to embrace zero emission electric vehicles and is a key plank in the council's air quality improvement programme.

Find out more at

[www.wandsworth.gov.uk/driveelectric](http://www.wandsworth.gov.uk/driveelectric)



## Rates relief for small traders

Qualifying small firms can now claim a discount on their business rates bills by filling out a quick and easy form and sending it back to the town hall.

Traders should keep an eye out for a pink envelope from the council which includes the short and simple application pack.

Business rates are set by national government, not by local councils. The relief scheme has been designed to protect vulnerable local firms from an increase in their business rates bills and the amount each trader can claim back will vary.

If you haven't received a pink envelope but think your business might be eligible call 020 7378 5941 to speak to an advisor.

## European Passport Return Service

The council now offers a convenient new service for European nationals living in Wandsworth which allows them to keep hold of their passports when applying to the Home Office for a registration certificate or a document certifying permanent residence.

Find out more at

[www.wandsworth.gov.uk/eprs](http://www.wandsworth.gov.uk/eprs)

## A-level success

Every secondary school and college in Wandsworth recorded an improved set of A-level results this year with just over 78 per cent of all grades within the A\* to C bracket. This puts borough schools ahead of the national average and among the best performers in London.

# Homeownership help

The council's home ownership team is dedicated to supporting local people who live or work in the borough and want to get a foot on the housing ladder. Here are some of the ways they can help.

## Affordable Housing Day

The team will be hosting their annual Affordable Housing Open Day on Thursday October 19 in the Wandsworth Civic Suite, Wandsworth High Street.

The event is completely free and will help first time buyers find their way around different home ownership schemes such as Shared Ownership, Right to Buy, Right to Part Buy and House Purchase Grants.

Housing associations, legal advisors, financial advisers and other property experts will also be there to help residents understand their options and take their first steps into homeownership.

## House Purchase Grants

This scheme offers eligible council tenants a grant towards buying a home of their own on the open market. In exchange, the tenant gives up their current property so it can go to another local family in need of a roof over their heads.

The scheme helps save taxpayers' money by reducing the council's temporary accommodation bill.

## Right to Buy

Eligible council tenants can buy their homes from the council with a discount of up to £104,900 on the purchase price.

The funds raised through Right to Buy sales are used to finance new affordable housing options for other local people.

## Right to Part Buy

This unique scheme allows eligible council tenants to buy a share of their property at a discounted rate, while continuing to pay a low rent on the remaining share.

Tenants can buy a minimum initial share of 25% and can continue to buy additional shares until they own their home outright.

To find out more about any of these homeownership options come to the open day, visit

[www.wandsworth.gov.uk/homeownership](http://www.wandsworth.gov.uk/homeownership),

[housesales@wandsworth.gov.uk](mailto:housesales@wandsworth.gov.uk) or

020 8871 6161.



## Open the door

Affordable housing open day

**19 October 2017, 2–8pm**

*Open the door  
to your  
first home!*



The Civic Suite, Town Hall  
Wandsworth High Street SW18 2PU  
For more information call (020) 8871 6161





# Buying through shared ownership could be cheaper than renting

**Matthew Andrews, 27, who works for the City of London Police, has swapped a privately rented flat in Tooting for a new shared ownership home in Nine Elms.**

He bought a 25 per cent share of a one-bedroom apartment at Riverlight Quay and is now settled in. Matthew explains his buying experience:

"I was previously renting in Tooting and I am now actually paying a little bit less than I was – this includes part mortgage and part rent. I never thought I'd be able to save enough for a deposit in London, but with shared ownership you need a minimum of five per cent of the percentage you're buying, which is much more affordable than on the open market.

"It's easy to become disheartened when you read about London property prices, but shared ownership is an affordable way of buying in London. Get your name on the council's shared ownership register as soon as possible. You get a higher priority the longer you've been on the list."

Last year Wandsworth delivered the second highest number of low cost homes among all 33 London boroughs, despite having less development land and higher land prices than many other parts of the city.

This high building rate is set to continue, with another 822 homes for shared ownership and 863 for low cost rent set to be completed over the next three years.

Unlike many councils, Wandsworth ensures that local residents and workers are first in line for these new properties.

Shared ownership helps people who cannot afford to buy a home at full value by allowing a step-by-step purchase. You can buy a share of between 25 and 75 per cent initially, and pay a discounted rent on the rest, with the chance to buy a larger share at a later date.

If you live or work in Wandsworth, register with us to get priority – last year 90 per cent of shared ownership homes were bought by people who live or work in the borough.

[wandsworth.gov.uk/sharedownership](https://www.wandsworth.gov.uk/sharedownership)

[housesales@wandsworth.gov.uk](mailto:housesales@wandsworth.gov.uk)



“ I never thought I'd be able to save enough for a deposit in London, but with shared ownership you need a minimum of 5 per cent of the percentage you're buying, which is much more affordable than on the open market. ”



The Wandsworth party, together with a local French WW1 re-enactment group, and Raymond Machut, Mayor of Villers-Plouich, in the village's Fifteen Ravine British military cemetery.

# Remembering Wandsworth's fallen heroes

**Earlier this year a delegation of Wandsworth councillors, former council officers and local residents travelled to the Somme Valley in northern France to pay their respects to fallen soldiers and to visit the sites of fierce First World War battles involving the Battersea and Wandsworth battalions.**

The group's first calling point was at the Philosophe Cemetery, close to the town of Lens, where a wreath was laid at the grave of Private Reginald Twyford who was aged just 15 years old when he died fighting for his country in the 'Pals' battalion, raised by the then Mayor of Wandsworth. He was only 14 when he volunteered, but persuaded recruiting staff that he was 18 and eligible to fight.

The next stop was at the village of Villers-Plouich which was liberated by Wandsworth's battalion during the 1917 advance to the Hindenburg Line. The battle for control of the village raged between April and September, and cost the lives of five officers and 87 men from the so-called Wandsworth 'Pals' - the 13th (Service) Battalion (Wandsworth), the East Surrey Regiment. During the battle Corporal Edward Foster, a 31-year-old dustman from Tooting, famously stormed up a ravine firing a Lewis gun and helped to dislodge German machine-gun positions. This heroic act was later rewarded with the Victoria Cross.

To mark the 100th anniversary of the liberation of Villers-Plouich, the council delegation laid a wreath at the Fifteen Ravine Cemetery on the outskirts of the village where many men from the Wandsworth Battalion are buried. A separate ceremony of remembrance took place at the village's own war memorial and also at



Cllr McDonnell at the grave of Private Twyford



A recruiting poster for the Battersea 'Pals' battalion.



the site of Corporal Foster's Lewis Gun assault, with three generations of the Foster family in attendance along with the current Mayor of Villers-Plouich, Raymond Machut. The people of Villers-Plouich are currently raising funds, with a target of 5,000 euros, to erect an impressive obelisk to commemorate Corporal Foster's valour. Speeches by Raymond Machut, Mayor of Villers-Plouich and Cllr Leslie McDonnell, the council's Armed Forces Champion, were sealed in a time capsule and buried in the recently-laid concrete foundation for the memorial.

After the war the people of Wandsworth raised funds to rebuild the shattered community of Villers-Plouich and the council unofficially adopted the village in 1920. In 2001 the village reaffirmed its ties to the borough by renaming a square Place de Wandsworth.

A memorial wreath was also placed at the centre of the small village of Flers, which was liberated in September 1916 by the 10th (Service) Battalion (Battersea), The Queen's (Royal West Surrey) Regiment - another 'Pals' battalion, made up of men from Battersea. This was the first battle in history in which tanks were deployed.

Councillors, officers, local groups and borough residents regularly visit Villers-Plouich. The visits are funded privately by those who attend, with zero cost to local taxpayers.

If you would like to contribute towards the commemorative obelisk email [mayor@wandsworth.gov.uk](mailto:mayor@wandsworth.gov.uk)



Wandsworth Mayor Archibald Dawnay, seen here on an early British tank in Wandsworth, raised the 'Pals' battalion for the borough



The family of Cpl Edward Foster VC (front) and the visitors from Wandsworth on the steps of the church in Villers-Plouich



Corporal Edward Foster, wearing his VC



# Get ready for winter

Autumn is on its way, and Wandsworth is supporting the NHS Stay Well This Winter campaign which is encouraging vulnerable people to get their flu jab.

People aged over 65, pregnant women, carers and those with long-term conditions, such as diabetes, heart disease, respiratory illness or serious weight issues, are all eligible for a free flu vaccine.

People over the age of 65, even if they are fit and healthy, and those with medical conditions are more vulnerable to the effects of flu, which can be much more severe than a cold and may result in hospital treatment.

If you are pregnant the flu jab doesn't harm your unborn baby. In fact it can protect your baby from flu for the first few months of life.

All two and three olds can get the jab at their GP (if they are not at school already) and children in reception and school years 1, 2, 3 and 4 will be offered the vaccine at school. Young children can get the vaccine in the form of a nasal spray.

Find out more about the flu jab at [www.wandsworth.gov.uk/flu](http://www.wandsworth.gov.uk/flu).



The Mayor of Wandsworth Cllr Jim Maddan get his jab.

in association with



Get your **FREE** NHS Health Check from your GP.

You must be aged 40-74, have not been previously diagnosed with diabetes, kidney disease, heart disease or stroke and have not had an NHS Health Check in the last five years.

For more information call the council's public health team on **(020) 8871 5026**, or visit [www.wandsworth.gov.uk/healthchecks](http://www.wandsworth.gov.uk/healthchecks)



Helping you prevent  
diabetes  
heart disease  
kidney disease  
stroke & dementia





# Give tobacco the boot this Stoptober

Stoptober is next month and Wandsworth's smokers are urged to sign up and promise to quit tobacco for 28 days.

Stoptober is the 28-day stop smoking challenge that encourages and supports smokers across England towards quitting for good. Research shows if you can stop smoking for 28-days, you are five times more likely to be able to stay smoke free for good

You can sign up now and get ready to quit on October 1 – search for Stoptober. You will receive an email each day to help keep you on track.

In Wandsworth you don't have to go it alone, the council's free Stop Smoking Service supports people who are trying to give up tobacco products, including cigarettes and e-cigarettes. Last year more than 1,300 people quit with their help.

Visit [wandsworth.gov.uk/stopsmoking](https://www.wandsworth.gov.uk/stopsmoking)

✉ [stopsmoking.team@wandsworth.gov.uk](mailto:stopsmoking.team@wandsworth.gov.uk)

or call the 24 hour freephone helpline on ☎ 0800 389 7921.



JOIN **STOP**TOBER

NHS

## Have you still not had your flu jab?

If you're 65 or over or you have a long-term health condition, flu can be serious.

That's why you're eligible for a free flu jab.

Don't put it off. Get your flu jab straight away.

STAY WELL  
THIS WINTER

[nhs.uk/staywell](https://nhs.uk/staywell)



Cheryl Sowell, Nurse

# Putting dignity at the heart of social care

The council's adult services team and charity Leonard Cheshire Disability are at the forefront of a national campaign to put dignity, compassion and respect at the heart of care services.

For the last 18 months senior managers have been working to embed the principles of the national Dignity in Care campaign within every aspect of care for the borough's most vulnerable residents.

"This is about focusing on the person we are caring for, rather than the conditions they may be struggling with," said the council's social care spokesman Cllr Paul Ellis. "A trained Dignity Champion will treat everyone as an individual, support independence and really listen to people's concerns and wishes, including those of family members and carers."

William J Gallagher, manager of Leonard Cheshire's Randall Close Resource Centre in Battersea, said: "Dignity is at the heart of what we do every day, and we never want to forget this. We are delighted Wandsworth Council has led the way in championing dignity and humanity in the borough. We know this is a vital issue for everyone and it can make a terrific difference to the people we support."

Care staff and senior management have all received special training and are encouraged to sign up to be Dignity Champions.

“ Dignity is at the heart of what we do every day, and we never want to forget this.

We are delighted Wandsworth has led the way in championing dignity and humanity in the borough ”



## Barbara's story

Barbara, 76, was a director of nursing services for Kings College Hospital before she retired. She was admitted into hospital with fractures to her spine and needed support from the council and Leonard Cheshire once she was discharged. She said: "I feel I'm getting an outstanding quality of care that treats me as a person. Staff were motivated and worked together in a holistic way. I could not have been treated with more dignity and respect and my sister who supports me at home also felt very much part of the experience."

For more information about adult social care visit [wandsworth.gov.uk/acis](https://www.wandsworth.gov.uk/acis)

For more information about dignity in care visit [dignityincare.org.uk](https://www.dignityincare.org.uk)



# what's on?

EVENTS FOR SEPTEMBER  
TO NOVEMBER 2017



Zadie Xa, Mood Rings, Crystals and Opal Coloured Stones, 2016, still. Courtesy the artist

**3 August – 24 September 2017 Open Wednesday – Sunday, 11am – 5pm**

## **Pump House Gallery new exhibition: Zadie Xa: The Conch, Sea Urchin and Brass Bell**

Join us at the exhibition preview on Wednesday 2 August, 6.30 – 8.30pm - everyone welcome! Pump House Gallery presents the first major UK solo exhibition by Canadian artist, Zadie Xa. Interweaving fact with fiction, past with future, to explore identity, desire and cultural memory, Xa's new work employs painting, textile, video and sound to tell the story of a displaced body's journey and return to a 'homeland'. Through such mysterious stories Xa seeks to create a space where we can reconsider notions of national identity, cultural ownership, and folkloric displacement. This exhibition is part of PS/Y's Hysteria programme and is curated by Mette Kjærgaard Præst in partnership with Pump House Gallery. The exhibition is supported by Wandsworth Council, Arts Council England, Wellcome Trust and Canada Council for the Arts. Battersea Park [www.pumphousegallery.co.uk](http://www.pumphousegallery.co.uk)

### **How to be listed**

Send details (including access for people with disabilities) by Monday October 2 to: [whatson@enablelc.org](mailto:whatson@enablelc.org)

We cannot guarantee that your entry will be inserted. This is a free service. The information in this guide has been provided by the advertisers themselves. Wandsworth Council and Enable accept no responsibility for the accuracy of the information or for any event not organised by the council or Enable.

What's On is compiled by Enable Leisure and Culture, a registered charity.

**enable**  
leisure & culture

Children's events  
outlined in yellow

### **September 9-24**

#### **Wandle Fortnight**

The annual celebration of the Wandle includes walks, talks, arts, open days, craft, nature, heritage, orienteering, cycling, trees, picnics, mud, songs and the Wandle Beer Festival. [wandlevalleyforum.org.uk](http://wandlevalleyforum.org.uk)

**Sunday 10 September and Sunday 8 October, Sellers from 7.30am - 1pm, Buyers from 8am - 12.30pm**

#### **The Friends Of Queen Mary's Hospital Charity Car Boot Sale**

Buyers' Parking: **£1 per vehicle (proceeds go to charity)**. Queen Mary's Hospital, Roehampton Lane, SW15 5PN [www.qmhfriendscarboot.co.uk](http://www.qmhfriendscarboot.co.uk)

### **Wednesday 6 to Friday 29 September**

#### **Far from the Western Front**

An exhibition telling South Asian Stories from the First World War. St George's Hospital, Tooting (University of London Library, Cranmer Terrace) **Free**

### **Saturday 16 September, 11 to 5pm**

#### **Tooting Foodival**

The award winning Tooting Foodival organised by Transition Town Tooting will be celebrating its 10 year anniversary. See and taste a wonderful array of locally grown produce and delicious dishes to excite your taste buds, plus there will be a selection of boutique market stalls and live entertain-

ment to keep everyone happy. Mushkil Aasaan is at 222 Upper Tooting Rd, London SW17 7EW (next door to Nando's and Hereward Road)

**Free event**  
**Wheel chair accessible**  
[www.transitiontowntooting.blogspot.co.uk](http://www.transitiontowntooting.blogspot.co.uk)



**Sunday 24 September to Sunday 1 October, 11am to 5pm**

#### **Balham Food Festival**

The 2017 Festival launches with the luscious sights, smells and tastes of The Balham Banquet from

11am to 5pm on Sunday 24 September in Hildreth Street and Bedford Hill Place. In its third year the Balham Banquet offers a funday for all, attracted over 1,500 local residents and visitors last year. With over 30 stalls, guests will be able to sample exquisite street food, alfresco bars and visit a wide selection of food related stalls plus live music and children's activities. Then continues with a week of promotional activity showcasing Balham's local food businesses. [www.balhamfoodfestival.com](http://www.balhamfoodfestival.com)

# what's on?

EVENTS FOR SEPTEMBER  
TO NOVEMBER 2017



**Saturday 30  
September, 12noon  
to 3pm**

## **Southfields Harvest**

Back by popular demand. An afternoon of good food, drink and music, plus a display of Southfields' best culinary talents (prizes for show-stopping cakes, jam and chutney). Creative activities for young and old. Rocky Head craft beer, local produce, BBQ, apple juicing and cake sale. Come and join the fun. **Free entry.** St Barnabas Church, Lavenham Road, SW18 5EP southfieldsharvest.weebly.com

**Saturday 30  
September, 1pm to  
4pm**

## **Table Top Sale for Sickle Cell Society**

Come by and sell at Anchor Church. Take a table and make use of your unwanted or excess items for only £10. Or come along and pick up a bargain. Refreshments available. All proceeds go to the Sickle Cell Society. 273 Garratt Lane, Wandsworth, SW18 4DU. Call Rachel to book your place on 07538713409 or 07949361572



**Saturday 16 September, 2pm  
Summerstown Celebration and Plaque unveiling**

The Summerstown 182 Project is putting up a plaque commemorating the site of the Copenhagen Running Grounds, followed by a celebration at St Mary's Church.

### **Free, all welcome**

The plaque unveiling will be at the junction of Garratt Lane and Burmester Road, opposite Tesco. [summerstown182.wordpress.com](http://summerstown182.wordpress.com)

## **Theatre503**

Lisa Spirling will make her directing debut as artistic director of Theatre503 with In Event of Moone Disaster, winner of the theatre's International Playwriting Award 2016. Theatre503, The Latchmere, 503 Battersea Park Road, London SW11 3BW [www.theatre503.com](http://www.theatre503.com). 020 7978 7040



**30 August – 23 September, 7.45pm Tues-Sat, matinees Weds and Sat**

### **Sid and Viv**

Everyone says Sid and Viv's house is dangerous, weird and a bit freaky. So why does Dunney think it feels like home? NorthSEE Theatre presents their debut production with this funny, coming of age drama, written in a unique, under-represented voice. Supported by English Touring Theatre as an ETT Forge company.

By Philip Correia. Director - Jonny Kelly. Producer - Emma Murton. Designer - Jasmine Swan

**Tickets £10 - 15**

#sidandviv @NorthSeeTheatre



**4 – 28 October, 7.45pm Tues-Sat, matinees  
Weds and Sat.**

### **In Event of Moone Disaster**

1969 - Man takes his first steps on the Moon, while Sylvia meets an astronaut at a party, who changes her world. 2055 - her granddaughter is set to become the first person to walk on Mars. Witness the adventures of three extraordinary women spanning 80 years, against the backdrop of humanity's journey to the stars.

By Andrew Thompson. Director - Lisa Spirling

**Tickets £10 - 15**

#MooneDisaster @theatre503

**Plus a programme of short runs and one night shows including:**

**3 September, 7.45pm**

### **Sharp Teeth**

Sharp Teeth Theatre bring together theatre, storytelling, poetry and music to create a night of riotous Sunday fun. They've had raps about stolen bikes, poems about cottaging, performances from drag kings, new writing about women who climb The Shard, and improvised storytelling about Lance Armstrong getting lost in a bathtub of meat, amongst other things.

**£12 / £10**

**15 and 16 October,  
7.45pm**

### **Sahar Speaks: Voices of Women from Afghanistan**

Brave new work by Afghan female journalists that reflects on their lives. These short plays include their struggles and triumphs, from dressing as a boy to go to school and being forced to marry as a child.

**£10 / £8**

**29-30 October,  
7.45pm**

### **Unbroken Festival**

After last year's success, Unbroken Festival returns to Theatre503. Featuring new writing, live music, visual art, workshops, a short film screening and various panel discussions. Unbroken presents a series of artistic responses to World Mental Health Day.

**£10 / £8**

### **The Bee's Knees at Battersea Arts Centre**

Bring little ones to The Bee's Knees - our magical indoor play space for under 5s, relax in our family friendly cafe and join us on Family Saturdays for fun, food and free activities for ages 0-11. Older children and young people can get involved in our Homegrown programme. Plus family shows during Half Term and Christmas holidays. [www.bac.org.uk](http://www.bac.org.uk)







### Saturday 4 November

#### Battersea Park Fireworks

Gates open at 6pm, bonfire is lit at 7.30pm and fireworks at 8pm. No entry after 8pm. Get ready for the council's incredible annual firework display in Battersea Park. Tickets go on sale on Friday 1 September. Limited 'Super Early Bird' and 'Early Bird' tickets available, first come first served. Tickets are available online only through [www.enablelc.org/fireworks](http://www.enablelc.org/fireworks)

Tickets: Super Early Bird: £7.00 + booking fee, Early Bird: £8.50 + booking fee and Standard: £10.00 + booking fee. Children under 10 are free, but must have a ticket.

**Wheelchair accessible**



### Saturdays and Sundays 7 – 8 and 14 – 15 October, 11am-6pm

#### Wandsworth Artists' Open House

149 artists and 86 venues across the borough have signed up as part of this year's Wandsworth Artists' Open House. If you want to buy some art created by local artists and explore the borough visit [www.wandsworthart.com](http://www.wandsworthart.com) to plan your own arts trail!

**Free**

[www.wandsworthart.com](http://www.wandsworthart.com)

### Saturday 21 October, 7.30pm to 2am

#### Wandsworth Borough Schools Reunion

A reunion event for those who attended a Wandsworth School for a celebration of life.

Artist in performance will be; Dennis Bovell (Matumbi) Man in Me, After Tonight, Point of View. Patrick Johnson (Private Collection), Slow down, Direction, Magic plus special guests.

[musicalentertainment@hotmail.co.uk](mailto:musicalentertainment@hotmail.co.uk)

07940 293 945

28 Upper Tooting Road, London SW17 7PG

**Admission £15.00.**

**Tickets: £14.99** through [www.Eventbrite.com/sp-wandsworth-borough-celebration-of-life](http://www.Eventbrite.com/sp-wandsworth-borough-celebration-of-life)

### Wednesday 1 – Saturday 4 November

#### Big Foot

Love, life and masculinity meet head-on as Joseph tells his poignant coming-of-age story with a twist of the fantastical. When the euphoric highs of teenage life in south London collide with terminal illness and family pressure, what is the right thing to do? Big Foot puts you in a teenager's footsteps as Joseph stumbles and strives to find a path to the present day.

Suitable for ages 12+

**Tickets: £12.50 - £16.00**

[www.tara-arts.com](http://www.tara-arts.com)

## Battersea Arts Centre

For further information and tickets please visit [www.bac.org.uk](http://www.bac.org.uk)



### Tuesday 17 – Saturday 21 October

#### 7.30pm (and 9pm on 21 Oct)

#### Sleeping Trees at the Movies

Everybody has their favourite film genre, whether it be rom-com, action, independent amateur Japanese anime, the list is truly endless. This autumn, award-winning comedy trio Sleeping Trees are bringing all three of their multi-genre hit shows to Battersea Arts Centre: Mafia, Western and Sci-Fi! Without props or set design to aid them and the trio must rely on their wits and a rip-roaring live score. Only someone who laments fun would consider missing the greatest movie trilogy since Big Momma's House. All three shows are directed by Tom Parry (Pappy's BBC4).

Battersea Arts Centre, SW11 5TN

**Price: £12.50, £10 concs** (see 2 shows for £18)



### Monday 23 – Tuesday 24 October, 7.30pm

#### Nish Kumar: Untitled Unmastered Unfinished

Nish has achieved global success on the stand-up circuit, with three rave reviewed solo stand-up shows receiving huge recognition from both industry and fans alike. He has performed at renowned comedy festivals including the Melbourne International Comedy Festival, New Zealand Comedy Festival and Latitude Festival.

Battersea Arts Centre, SW11 5TN

**Price: £10, £8 concs**



### Tuesday 31 October – Saturday 18 November, 7.30pm

#### Ugly Chief

A new show from the creator of Major Tom and Hair Peace. Ugly Chief is a comedy based on true events, performed by a real-life father and daughter. It explores the taboos around death, and the fractious relationship with a parent whose opinion you don't always agree with. Age Recommendation: 12+

Battersea Arts Centre, SW11 5TN

**Price: 31 Oct - 4 Nov, £12.50. Monday 6 – Saturday 18 November, £12.50 - £17.50 concs**

#### 'The Agency'

Are you aged 15-25 from the Clapham Junction, Battersea area with ideas that need to happen. Do you want to start your own business or project? Your idea can be about anything you like, from a boxing workshop, a music festival or a film project, as long as you can demonstrate how it inspires positive change in your community. You'll be invited to pitch your idea to a panel of experts and, if successful, be given £2000 to turn your passion into a project, business or social enterprise, as well as support and industry guidance to help you succeed.

Groups and individuals are welcome to apply. Sign up now through [www.bac.org.uk](http://www.bac.org.uk) and search for 'The Agency'. Deadline: Friday 8 September 2017 Sessions will run on Saturday daytimes and Wednesday evenings from 18 September 2017.



# Help find new foster carers and get £1,000

**People who refer a friend or relative who is successfully approved to be a foster carer will get a thousand pounds under a new council incentive scheme.**

More foster carers are always needed, and the council's brought in the initiative because people who are referred by others have a higher application success rate.

It is all about spreading the word and encouraging people to sign up to a rewarding job that can transform a child or young person's life.

People from outside Wandsworth can be referred, and they can be married, single, divorced and from any religious or cultural background. All they need is the resilience and determination to take on a challenge and to have a spare room in their home.

## How to refer:

1. When you discuss the opportunity of becoming a foster carer with someone you think is suitable, check they are over 21 years, live in the UK permanently, have a spare room and are likely to pass a police check.
2. This person would then have to contact us to progress their application – call (020) 8871 6666, email [carerrecruitment@wandsworth.gov.uk](mailto:carerrecruitment@wandsworth.gov.uk) or visit [wandsworth.gov.uk/fostering](http://wandsworth.gov.uk/fostering) and complete the registration form. They would need to give your name when the assessing social worker completes an initial discussion and books a home visit.
3. If they are selected to enter the assessment process, you will be given an immediate thank-you gift of £200 which will form part of the £1,000 final payment. Your friend will then need to undertake the Skills to Foster course and undertake relevant health and police checks. At this point you will be paid half of the total payment: £500.
4. You will receive the final payment of £300 if your friend goes on to be approved as a foster carer. Please note terms and conditions apply.

## To find out more

Call: (020) 88716666 Mon-Fri 9.30am-5pm

Email: [carerrecruitment@wandsworth.gov.uk](mailto:carerrecruitment@wandsworth.gov.uk)

## Pauline's fostering journey

**Pauline has fostered since 2012 – originally for another agency and then for Wandsworth Council. She's single with two grown-up children.**

“ I am always out and about busy doing something; I love spending one to one time with the children and young people I foster and taking them out to places they enjoy.

As a single foster carer, I believe it is easier for the child because they get one to one attention. This is particularly beneficial for girls who are more comfortable with a female carer.

My first placement was a child aged nine months who was adopted three years later. She was my little shining star, so clever and always happy and beaming. When the time came for her to be adopted I was very sad, but for me it was about preparing her to settle into her new permanent home. I prepared a large photo album and did lots of life story work to help her in her future journey.

Since then I've had a number of placements of children ranging from nine months to 16 years and each one has been a different learning experience.

Some placements are easier than others but fostering is never easy – it has its challenges but the rewards are enormous.





## Doing it online

Using our website helps keep your council tax bills low

### Report a waste problem

wandsworth.gov.uk/waste

### Request a housing repair

wandsworth.gov.uk/housingonline

### Search planning applications

wandsworth.gov.uk/planningregister

### Report a street problem

wandsworth.gov.uk/streetproblem

### Apply for a school place

eadmissions.org.uk

### Book an MOT

wandsworth.gov.uk/MOT

### Report noise and nuisances

wandsworth.gov.uk/noise

### Apply or renew a parking permit

wandsworth.gov.uk/parkingpermits

### Report graffiti for removal

wandsworth.gov.uk/graffiti

### Report an abandoned vehicle

wandsworth.gov.uk/abandonedvehicles

### Tell us if you are moving in or out of Wandsworth

wandsworth.gov.uk/MIMO

### Enquire about your housing options

wandsworth.gov.uk/housingoptions

## Pay it online

It's now easier to pay online at [wandsworth.gov.uk/payments](http://wandsworth.gov.uk/payments)

### Pay your council tax

wandsworth.gov.uk/paycounciltax

### Pay a parking fine

wandsworth.gov.uk/parking/payment

### Pay your rent

wandsworth.gov.uk/rents

### Pay for a marriage or civil partnership ceremony

wandsworth.gov.uk/ceremonypayment

### Pay your business rates

wandsworth.gov.uk/paybusinessrates

### Pay a waste or littering penalty

wandsworth.gov.uk/waste-enforcement

## Talk to us online

### weekly e-newsletter

[wandsworth.gov.uk/enews](http://wandsworth.gov.uk/enews)



[facebook.com/wandsworth.council](https://facebook.com/wandsworth.council)



[twitter.com/wandbc](https://twitter.com/wandbc)

## My Account

Create an account and you will only have to sign in once to access the main council services.

[wandsworth.gov.uk/myaccount](http://wandsworth.gov.uk/myaccount)

## Report It app



**Wandsworth Report It** makes it easier for anyone to report problems like flytipping, graffiti and other environmental issues. Search for the Wandsworth Report It app on the Apple, Android or Windows app store.

## Other contacts at the council

### Adult Social Services

(020) 8871 7707

### Births, Deaths, Marriages and Voting Hotline

(020) 8871 6120

### Early Years and Childcare Hotline including Family Information Service and After School and Holiday Play Centre bookings

(020) 8871 7899

### Environmental Services including noise, pest control, private housing and licensing

(020) 8871 6127

### Finance Hotline including benefits, council tax, rents and business rates

(020) 8871 8081

### Housing Hotline including housing management and repairs, service charges, home

### ownership, homelessness and housing advice

(020) 8871 6161

### Parking and Streets Hotline including concessionary travel, blue badges, MOTs, highways and skip licensing and bay suspensions

(020) 8871 8871

### Planning and Building Control hotline including Community Infrastructure Levy (CIL), land searches and street naming and numbering

(020) 8871 7620

### Schools and Admissions

(020) 8871 7316

### Waste Hotline including rubbish, recycling and litter

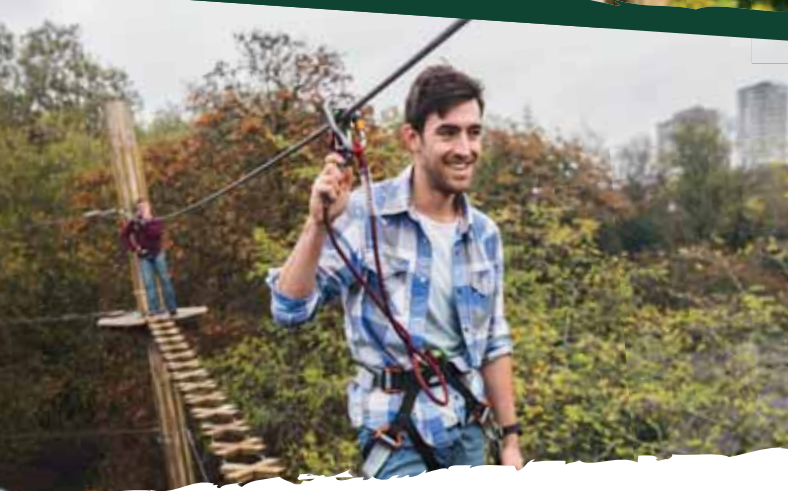
(020) 8871 8558

**Go!**  
**Ape!**  
LIVE LIFE  
ADVENTUROUSLY

**UK's NO.1  
FOREST  
ADVENTURE**

**10%  
OFF  
PER PERSON\***

at Battersea Park, London



 TREE TOP ADVENTURE

 TREE TOP JUNIOR

**Book at [goape.co.uk](http://goape.co.uk)**  
or call **0845 838 1192<sup>†</sup>** quote **BRGTBA**

\*Offer valid until 30th November 2017, excludes Saturday, bank holidays and purchase of gift vouchers. Discount code must be entered at time of booking. Only valid at Battersea Park. <sup>†</sup>Calls cost 7p per minute plus your phone company's access charge. Participation and supervision ratios apply - please see our website.