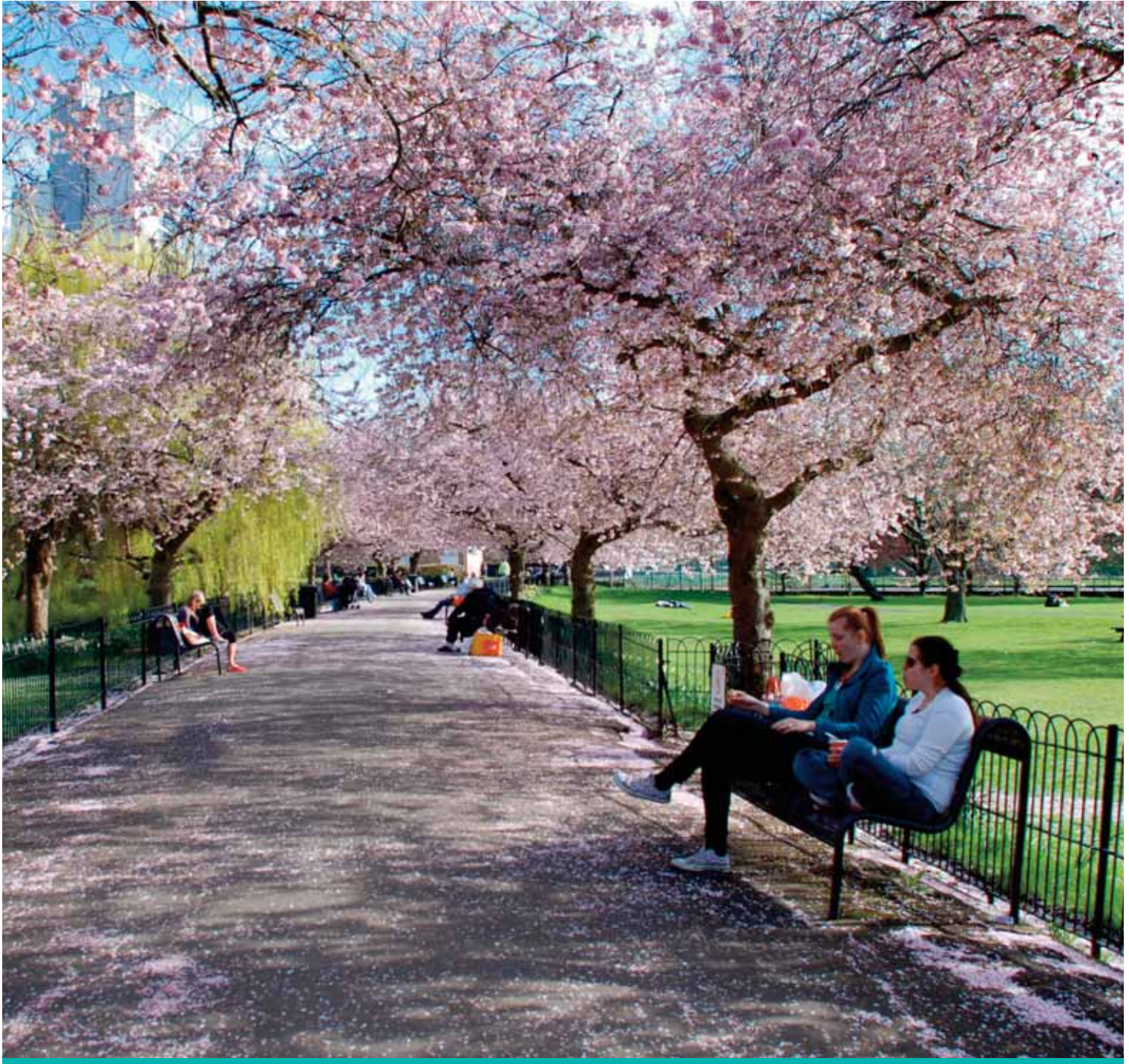


Brightside

The magazine of Wandsworth Council

Issue 179 March 2017



Council tax to be half London average

New flytipping squad on patrol

Act now to stop new flightpaths



Delivered to 140,000 homes - Balham Battersea Earlsfield
Furzedown Putney Roehampton Southfields Tooting Wandsworth

FREE ENTRY - FREE ADVICE - FREE TALKS

EMPLOY WANDSWORTH 2017

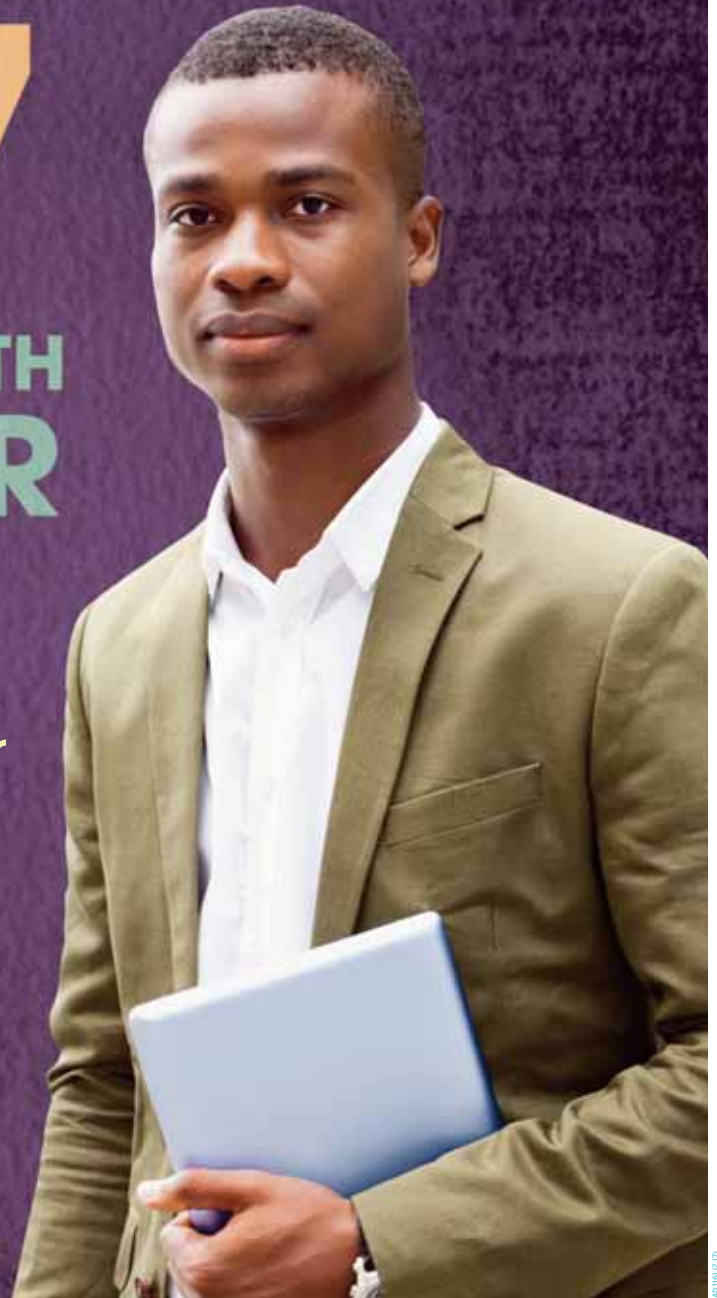
VISIT THE WANDSWORTH
JOBS FAIR

Meet companies offering
hundreds of jobs and career
opportunities at all levels

Friday 21 April 2017
10am-3pm

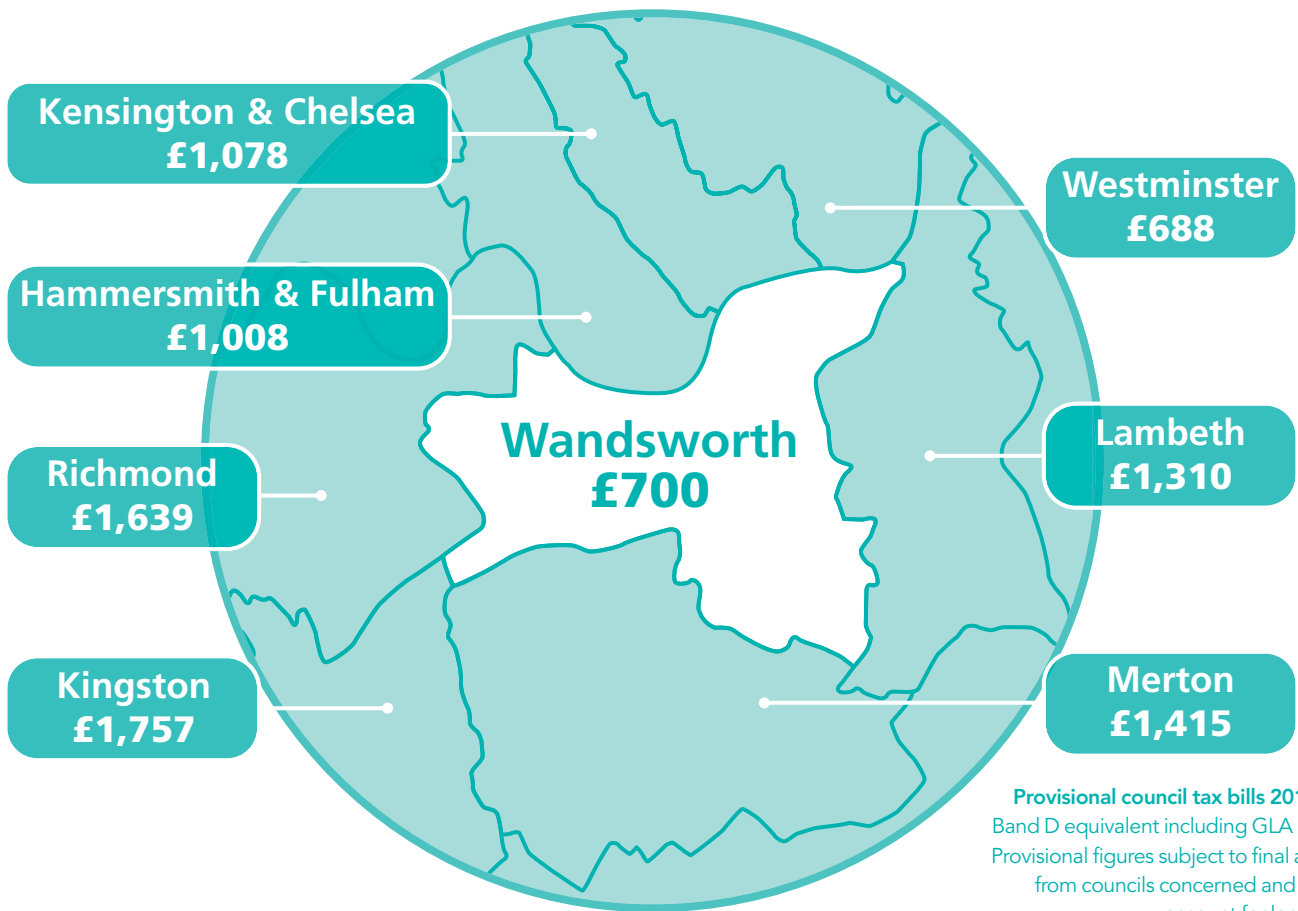
Civic Suite

Wandsworth High Street London, SW18 2PU



Register at
www.employwandsworth.org





Provisional council tax bills 2017-2018
 Band D equivalent including GLA precept.
 Provisional figures subject to final approval
 from councils concerned and may not
 account for local levies.

Council tax half London's average

“ This year Wandsworth’s council tax bills will once again be roughly half the London average. The average annual charge for a Band D home will rise by £20.13 to £700.04, which is a saving of more than £1,000 compared to some areas.

In Wandsworth we understand just how important our low tax rate is to vulnerable members of our community like pensioners, low income parents and young people sharing homes in the private rent sector. They all have tough financial choices to make each month and keeping our bills low makes a real difference.

This council has also proved that it's

possible to maintain a low tax rate while delivering the high quality services people rely on, like weekly recycling and waste collections, beautifully maintained parks, a superb library network and great schools.

We achieve this balancing act thanks to many years of prudent financial management and through pioneering more efficient ways of working, like sharing our staff, back office costs and purchasing power with Richmond Council. This year the council also received a £13m New Homes Bonus as a direct reward for our successful regeneration and home building efforts. This helps us to balance our books and protect front line services from the impact of

reduced Government funding.

We spend our share of council tax income on a range of local services and pass roughly 40 per cent directly to the Mayor of London.

Everyone can help keep bills low by recycling carefully, signing up for an online council tax account or paying by direct debit. This all helps to reduce our costs and keeps services running efficiently.



Ravi Govindia
 Leader of
 Wandsworth
 Council

Inside
 March 2017
www.wandsworth.gov.uk
 Cover photo: King George's Park in blossom

Clean bus campaign	4	What's it like to live in Nine Elms?	11
Estate development partners	5	Free business advice	15
Making Wandsworth clean and green	6	Royal Marines parade through Wandsworth	16
Heathrow flightpath warning	8	Wandsworth Grant Fund	20
New homes for Earlsfield	9	Get ready for the Wandsworth Arts Fringe	26
Tunnelling starts on Battersea tube link	10	What's On	27



Step forward for clean bus campaign

Wandsworth Council's campaign to clean up London's heavily polluting bus fleet took another step forward this month with Putney High Street becoming the first route served exclusively by buses which meet the Euro VI emission standard.

Putney is the first place to reach this milestone thanks to a unique council research project which proved diesel powered buses cause the vast majority of nitrogen dioxide build ups on this narrow and congested main road. This evidence has been used to secure bus fleet upgrades from Transport for London over the past few years, the results of which are now being branded as a 'Low Emission Bus Zone' by the Mayor.

However, councillors warn that the street will still record pollution levels well above EU legal limits and more needs to be done here and in other places across Wandsworth before air

quality reaches an acceptable level.

Deputy council leader Jonathan Cook said: "Our campaign to rid Putney High Street of diesel bus fumes is getting results and we will continue to monitor pollution levels very closely. There is still a long way to go and ultimately we need to remove all diesel powered buses from this road. More than 100 buses an hour pass through this narrow street and such a high volume of large diesel engines means pollution builds up quickly. In these confined conditions even the new, lower emission diesel buses produce far too much pollution. The council will continue to make the case for congested routes in Putney, Tooting, Balham, Battersea, Roehampton and Wandsworth Town to be get the clean buses they so badly need."

Find out more about the council's efforts to improve air quality at www.wandsworth.gov.uk/airquality

POLKA
Wendy Toye and Polka Theatre present

Sarah & Duck's Big Top Birthday

6 April - 14 May

LIVE ON STAGE

See the BAFTA award-winning CBeebies duo and friends
 London and National Tour 2017

6 April - 14 May
 020 8543 4888 www.polkatheatre.com
 Polka Theatre, Wimbledon, London SW19 1SB

As seen on **CBeebies**

Sarah & Duck © Entert. Entertainment, Distributed by EDC Worldwide Ltd.

WANDSWORTH COUNCIL MOT CENTRE

BOOK AN MOT YOU CAN TRUST

We don't sell repairs, so:
No Hidden Extras
No Bogus Recommendations

Call **(020) 8871 6761**
 or email mot@wandsworth.gov.uk
 to book your MOT

8am - 4pm Monday to Friday
 Frogmore Depot, Dormay Street,
 Wandsworth, SW18 1EY

MOT Testing
 Class 4, 5, 7

THE RICHTER BORDICH
Wandsworth

AD.1190 (2.17)



A aerial view of the Winstanley and York Road estates and surrounding area

Bright future for council estates as development partners announced

As Brightside goes to print the council is finalising the selection of development partners for two of London's most ambitious regeneration projects.

Part of the council's Aspirations Programme, these schemes will see thousands of new homes built across the Alton estate in Roehampton and the Winstanley and York Road estates in Battersea. All directly affected owner-occupiers and secure council tenants are guaranteed an offer of a brand new home in the development so existing estate residents will be among the first to benefit from the area's revival.

Unlike estate regeneration schemes in other parts of London, both of these projects will deliver increased numbers of social housing, as well as genuinely affordable homes for rent and sale. The council will ensure existing Wandsworth residents get priority for these new lower cost properties.

New libraries, shops, community centres and playgrounds will be built on each estate, and the Winstanley and York Road project also includes a brand new leisure centre.

Wandsworth's unique approach to housing estate regeneration has been endorsed by ministers and council leader Ravi Govindia is a member of the Government's regeneration panel which is shaping national policy.

To keep up to date sign up for e-news alerts at www.wandsworth.gov.uk/e-news

To register for affordable housing in Wandsworth visit

www.wandsworth.gov.uk/homeownership

CBE for leader

Leader of Wandsworth Council Ravi Govindia has been awarded a CBE in recognition for his services to local government. Cllr Govindia was first elected to Wandsworth Council in 1982 and became leader in May 2011. During his 34 years at the town hall he has specialised in the fields of regeneration, housing and planning. He played a key role in securing the Northern Line extension to Nine Elms in north Battersea and has helped deliver record levels of new affordable housing.

Maurice Johnson

Former Latchmere ward councillor Maurice Johnson has passed away at the age of 84.

Mr Johnson served as a Labour councillor from 1990 until he stood down at the 2010 local elections. In 2010 he was made an Alderman of the London Borough of Wandsworth in recognition of his two decades of public service on behalf of the people of Battersea.

New right to part-buy

Wandsworth has launched a new scheme which enables council tenants to buy a share of their home. Secure tenants not able to afford the full cost of their council home can buy a proportion of it and pay a low rent on the rest. They will also have the opportunity to buy more over time if they wish. The council will reinvest the proceeds into building new affordable homes.

Find out more at

www.wandsworth.gov.uk/homeownership

To obtain a copy of
Brightside in large print
or audio version
please telephone
(020) 8871 7266 or
email brightside
@wandsworth.gov.uk

Your Brightside

Your Brightside is distributed by London Letterbox Marketing. We expect all copies of Brightside to be delivered to every home in the borough and pushed fully through the letterbox.

It is produced by the council's corporate communications team. It is the only publication delivered to every household in the borough. We would like to thank all our advertisers for their support. Brightside will consider display advertisements from non-council bodies (excluding recruitment) and reserves the right to decline advertisements. The council neither accepts responsibility for the content of nor endorses any non-council advertisements.

• Editorial (020) 8871 8902

• Advertising (020) 8871 7266

If you have a comment about the magazine please telephone: (020) 8871 8902/6173 or
email: brightside@wandsworth.gov.uk

Brightside is printed on environmentally friendly paper, please recycle.

A cleaner, greener Wandsworth

A dedicated effort by the council and local residents has seen a string of projects to keep the borough's streets cleaner and create pockets of green where wildlife can thrive. Here's just some of what's going on.



Cllr Jonathan Cook with the new team

Keeping your streets clean

A dedicated six-person enforcement team wearing body cameras is cracking down on litter and flytipping, as a major pilot scheme gets underway.

The uniformed team patrols the borough's streets and public areas daily, with offenders receiving a £80 fixed penalty notice. The new squad is in addition to the council's in-house team, which last year issued well over a thousand fines for flytipping and littering.

This is part of a major crackdown on litter and flytipping by the council which will also see:

- More fines for culprits
- Cameras at hot spots to catch those responsible
- Naming and shaming offenders
- Cracking down on businesses that dump their waste on the street
- Nabbing unlicensed waste removal firms that simply dump rubbish illegally

Protecting wildlife

Some of the borough's community gardens are working with the charity London Sustainability Exchange to protect butterflies and other flying insects.

The Putney, Tooting and Bramford community gardens, and the Nine Elms gardening club at the ROSE Centre (pictured), are helping to create 'Pollinator Paths' by using specially-chosen plants to provide hideaways for the insects. Now residents and local schools are urged to do their bit by turning their balconies and gardens into insect havens.

People can apply for planting kits that can be used on even the smallest spaces. Throughout May, the team running the project will pop up at different gardens each weekend, and there will be opportunities to learn about wildlife in the local area.

Free family activities such as upcycling and bee home making workshops will be offered. To take part email Hannah Gardiner at h.gardiner@lsx.org.uk or visit [facebook.com/groups/PollinatorPathsWandsworth](https://www.facebook.com/groups/PollinatorPathsWandsworth)



Creating an urban oasis

Residents of the Wendelsworth Estate have planted a new orchard in the heart of Wandsworth.

They created the green oasis with the help of the Helping Britain Blossom organisation, which donated fruit trees and provided training in how to look after them. Members of Wandsworth GoodGym, who combine running with carrying out jobs in their local community, helped plant the trees.

Martin Cobby, who leads the estate's orchard group on behalf of the Wendelsworth Residents Association, said: "Helping Britain Blossom have pledged their support for the next five years and we look forward to holding future community events when they can come to share their expertise."

Wandsworth Council supports several green



projects across the borough including the Tooting Community Garden run by the environmental charity Transition Town Tooting and the Doddington & Rollo Community Roof Garden in Battersea.

If you live on an estate and are interested in setting up a community garden, talk to your local resident participation officer. Find yours at www.wandsworth.gov.uk/RPO.

Other garden projects may be eligible for money from the Wandsworth Grant Fund. See page 10.

What can you do?

In areas not normally covered by street cleaners, such as car parks and private land, the council will support community litter picks by providing bags and taking rubbish away.

It also gets involved in initiatives such as Clean for the Queen (pictured) and the recent Great British Spring Clean.

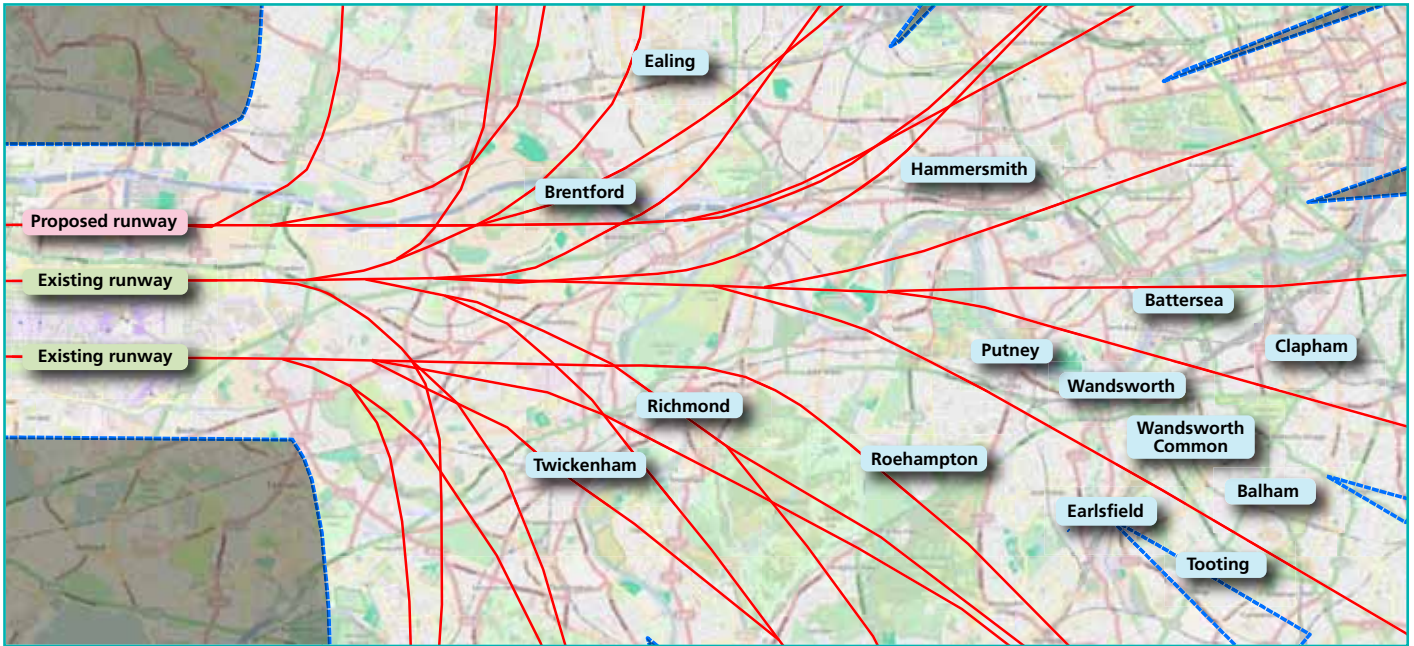
It can be hard to prosecute flytippers without evidence, so if you have proof of who is the culprit, flytipwitness@wandsworth.gov.uk

Some problems are caused by leaving rubbish out on the wrong day. Check your collection day at www.wandsworth.gov.uk/waste.



Report flytippers using the Wandsworth Report it app, which has already been downloaded by more than a thousand people. Get it from your app Store. Find out more at [wandsworth.gov.uk/reportitapp](http://www.wandsworth.gov.uk/reportitapp)





Act now to stop new flightpaths over Wandsworth

The Government is now consulting on plans to expand Heathrow Airport which could result in new flightpaths being created across parts of Wandsworth which have never before been affected by aircraft noise.

Londoners have until May 25 to have their say on the proposals and councillors are urging residents to raise any concerns they have before the deadline.

Wandsworth Council is opposing the third runway plan and is concerned that the Government's consultation material does not include information on important issues like increasing aircraft noise, increasing pollution, health impacts, taxpayer costs, traffic increases or the loss of noise respite periods.

Councillors have also complained that the consultation does not include details of the new flightpaths needed to serve a three runway airport. Currently, the Government does not plan to tell the public where the final flightpaths will be until after it approves the airport's expansion.

The flight path map above is one of the options Heathrow published for a three runway airport.

Make your voice heard

Email: RunwayConsultation@dft.gsi.gov.uk

Write to: Freepost RUNWAY CONSULTATION

Respond online: www.gov.uk/dft/heathrow-airport-expansion

Sign up for updates: www.wandsworth.gov.uk/aviation

How could Heathrow expansion affect you?

Increase in **noise**

50% increase in flights and new flightpaths over quiet parts of the South East.



Night flights would continue, and the Government's proposed 6.5 hour ban doesn't cover the whole night.



Most communities under flight paths will be overflown for 75% of the day, compared to 50% today.

Mayor celebrates 'Cosmopolitan Wandsworth'

Wandsworth Mayor Cllr Richard Field has hailed the borough's 'cosmopolitan culture' as new electoral data reveals the numbers of foreign nationals now choosing to make their home in the local area.

The electoral roll shows that British residents make up the vast majority of the local population at 182,000. This is followed by the Irish (6,000), Italians (4,500), Polish (3,900), French (3,200), Germans (2,200), Spanish (2,200), Australians (2,100), Portuguese (2,000) and Pakistanis (1,645).

The figures only include residents who have registered to vote in Wandsworth, so total numbers will be higher and nationalities which do not qualify to vote in the UK will not be counted.

Mayor Richard Field said: "This is a fascinating snapshot of the many nationalities which make up our fine mix of cosmopolitan culture. It's certainly not a complete picture, but it does highlight just how wonderfully diverse and multi-cultural the Brighter Borough really is. This diversity is Wandsworth's greatest strength and I'm very proud to represent a borough in which so many different people get along and respect each other."



New homes for Earlsfield

New housing and a brand-new health centre in Earlsfield have come a step closer.

The council has chosen development firm Higgins Construction to deliver a fully updated, larger GP-led NHS community health centre and new homes on land at the corner of Swaffield Road and Garratt Lane.

The brownfield site is currently occupied by the existing 1960s Brocklebank

building, some existing shops and a car park. The old health centre and pharmacy will stay open until the new one is built.

Investment in this part of the borough has already seen the creation of the new 420 pupil Floreat Academy plus a nursery for 50 local children, while more new homes are to be built fronting Oakshaw Road.



Dip flip cash

Tooting restaurant Dip & Flip raised £3,279 for the St George's Hospital Charity by holding a 'pay what you can day'. Dip and Flip's Michelle Hogan said 'Tootopians dug deep and we really felt a sense of love for the hospital. The day after we even had customers return to us giving more donations as they felt they hadn't given enough the day before.' To donate visit bit.ly/dipflipdonation

Free childcare

From September some working parents will be able to claim an extra 15 hours' of free childcare. All three and four year olds are already eligible for 15 hours' childcare a week, funded by the council. Now some working parents will be able to get a total of 30 hours.

See the eligibility criteria at wandsworth.gov.uk/fis

Register to vote

The council's electoral services team is encouraging eligible local residents to make sure they are registered to vote at their current address.

There are no elections currently scheduled for this year, but just being on the electoral role can improve your credit score and reduce borrowing costs.

To register to vote and to find out who is eligible, visit yourvotematters.co.uk

Tunnelling starts on Battersea tube link

Tunnelling work on the Northern Line Extension to Battersea is due to start this month.

Two giant tunnel boring machines have been lowered 20 metres below ground in Battersea, lifted by a huge 750-tonne crane.

The machines will create two 3.2km underground tunnels to extend the Charing Cross branch of the Northern



line from Kennington to Nine Elms.

As well as the new tunnels, two new stations are being created: one at the heart of the Battersea Power Station development and another at Nine Elms to the east.

The extension, targeted for completion in 2020, was secured by Wandsworth Council and is helping to deliver thousands of affordable homes, jobs and new opportunities.

For updates on the project visit www.nineelmslondon.com.



Design team starts work on new bridge

A design team led by Denmark's Bystrup Architecture Design and Engineering has started exploratory work on a new bridge between Nine Elms and Pimlico.

Bystrup has been commissioned by Wandsworth Council to design the bridge - one of the first Thames crossings developed specifically to meet the needs of both pedestrians and cyclists. The team's first task will be to examine the feasibility of the different location options for the bridge along this part of the Thames, which is the longest stretch of riverside in

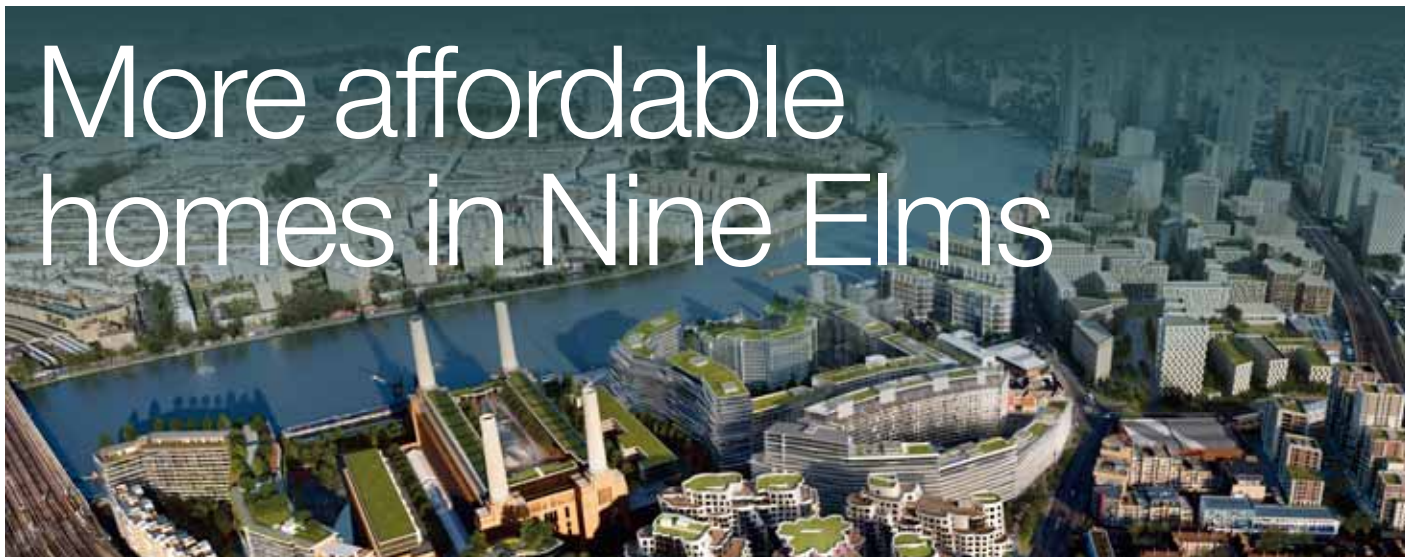
central London without a crossing point.

£26 million in private funding for this sustainable transport link is identified from the development of Nine Elms and, according to a Transport for London feasibility study, the project would pay for itself twice over in terms of reduced journey times and other benefits.

For more information please visit

www.nineelmspimlicobridge.co.uk or call [08081 645 340](tel:08081645340) or email consultation@nineelmspimlicobridge.co.uk

More affordable homes in Nine Elms



The Riverlight scheme includes 116 shared ownership homes built on a former industrial estate. Priority was given to buyers from Wandsworth registered with the council's home ownership team.

Almost 800 shared ownership homes will be built in Wandsworth over the next three years, many of which come from the Nine Elms regeneration programme.

Five months ago, surveyor Lucy Jordan swapped life on Lavender Hill for a shared ownership flat in Riverlight on Nine Elms Lane. She shares her experience with Brightside readers.

What surprised you about the shared ownership process?

How easy and affordable it was. It was quick and painless to become an 'eligible buyer' on the Wandsworth Shared Ownership list, and the steps to be allocated a flat went smoothly (financial checks and approval from the housing provider). The only hitch were legal and construction delays that meant I had to wait two months more than expected to move in.

What made you choose Riverlight & Nine Elms?

I am really sold by the whole story of the Nine Elms regeneration area and the location so it was an easy choice for me. I am excited to see the place grow and change!

Any places or spaces around your new home that you enjoy or look forward to exploring?

I am really excited for the retail at Phase 1 of the Battersea Power Station to open, they have some really great bars and restaurants opening. And I am also looking forward to seeing the Linear Park appearing as each of the developments around it complete!

How did you hear about the shared ownership scheme?

I have known about it for a while but always thought that it wouldn't be affordable, but fortunately in Wandsworth their policy restricts the total monthly costs of shared ownership to ensure it is affordable for a range of salary bands. Riverlight was the first scheme I came across that was affordable for me.

Anything else you'd like us to share about your story or the area?

I have now been living in Nine Elms for five months and have really enjoyed my experience. I am looking forward to Summer 2017 when the Embassy will be opening, the improvements along the waterfront will be complete and the restaurants at Phase 1 Battersea Park Station will be open.



To find out more about shared ownership, visit wandsworth.gov.uk/homeownership

To find out more about the area's revival and what it has to offer, visit nineelmslondon.com

Breathing new life into the common

So far 15 Wandsworth residents have taken their first steps into ground maintenance and landscape conservation industry thanks to the £1.9m Tooting Common Heritage Project.

The trainees have been working on the common for the last few months and have now successfully completed a bespoke Level 1 City and Guilds Diploma in Land Based Studies (Environmental Conservation).

Last year Wandsworth Council was awarded just under £1.4m by the Heritage Lottery Fund (HLF) to restore, conserve and enhance the cultural and natural heritage of Tooting Common. Another £500,000 is being match funded by various partners including Transport for London, The Woodfield Project, Wandsworth Council and Enable Leisure and Culture.

Key elements include:

- Restoring the 1930s drinking fountain
- Restoring and expanding acid grassland areas on the Lido Field and Tooting Graveney Woods
- Developing a heritage trail
- Improving the lake
- Replanting the Horse Chestnut Avenue for the next generation
- Additional tree planting, tree disease investigation and tree strategy development
- Transforming the Woodfield pavilion into a community hub
- Providing accredited training and learning opportunities in horticulture and conservation for local people on Tooting Common

Find out more at www.wandsworth.gov.uk/tootingcommonheritage or call the team on [\(020\) 8871 6559](tel:020388716559)



“ I live locally and have always brought my children here to play. Now I have made a positive impact on this space - it's great. As well as that I've learnt some new skills and got some more qualifications. ”

Dameon Napoli

Support shops and save money

Local resident Archie Fitzherbert has launched a new community platform to help support Wandsworth's independent shops, restaurants and businesses.

Voucher Local gives shoppers access to weekly offers from local businesses including dentists, gyms, butchers and hairdressers. "If each Wandsworth household spent just £10 per month in a local independent business, rather than a supermarket, it would inject over £15m per year into the local economy." said Archie.

Visit www.voucherlocal.org



Award for hospice

Royal Trinity Hospice's innovative service aimed at improving end of life care for people living at home in Wandsworth has won a National Council for Palliative Care Award. The Wandsworth Care Coordination Centre, which is based in the hospice at Clapham Common North Side has supported more than 800 patients and their families. Find out more at www.royaltrinityhospice.london.

Beer bonanza

Around 100 beers and 25 ciders will be on offer at the 9th annual Wandsworth Common Beer Festival from March 29-April 1. It is held in Le Gothique at the Royal Patriotic Building, which this year is marking its 160th anniversary.

Visit www.wandsworthbeerfestival.eventbrite.co.uk

Landlords' forum

Landlords who rent out private property in Wandsworth are invited to a Landlords Forum on March 20. Find out more about landlords' role in meeting local housing need, changes in legislation and what council support is available. Visit

www.landlords.org.uk/events/nla-wandsworth-landlords-forum



First pubs - now shops

The council is to use its planning powers to protect shops and other retail outlets from being turned into estate agents.

Wandsworth has already used its 'Article 4' powers to prevent 120 of the borough's pubs from being converted to other uses.

Now it wants to stop retail outlets from having turned into financial sector businesses such as estate agents without good reason. The new rules will apply to all of the borough's main shopping

areas and other important shopping parades, and are expected to come into force in August.

Strategic planning spokesman Cllr Jonathan Cook said: "Shops are the lifeblood of our high streets. By removing permitted development rights we can better protect them and help secure the future of our local economies"

For more information visit www.wandsworth.gov.uk/article4.



Golden cheque

A resident from West Hill in Wandsworth has won the first round of this year's Golden Ticket recycling prize draw, with Home Start Wandsworth scooping the £2,500 community prize. Home Start will use the money to support vulnerable young families.

The competition is run by the Western Riverside Waste Authority to encourage people to recycle correctly. There is one further draw on March 24. To be in with a chance of winning, put your details on a ticket and pop it in your recycling.

www.wrwa.gov.uk/goldenticket



Landlords

Looking for trouble-free letting?

- Guaranteed rent for the duration of the lease
- Rent paid direct to your bank account
- No management fees or commission
- Free professional management service
- Property leased for 3½ years

We are looking for properties in the borough of Wandsworth and surrounding areas.

For further information on this scheme and other letting opportunities, call us on (020) 8871 7333 or email privatelandlords@wandsworth.gov.uk



AD 247 (9/15)



Fishy day for young chef finalists

The final of the Wandsworth Young Chef of the Year competition will be held this month.

Wandsworth Young Chef, run by the Mayor of Wandsworth and the council's life-long learning team, teaches young people how to cook good healthy food to a budget, and gives them the opportunity to access training, mentoring and valuable experience in the catering industry with a view to helping them get jobs in the future.

Support is being provided by the South Thames College catering school and major catering company Compass, which has been involved with the competition since it launched in 2013.

Last month the finalists were taught how to prepare and cook fish by the Billingsgate Seafood School (pictured).



Energy win for Hotham

Emma Peon, nine, has won £25k's worth of ecological energy-saving devices for her school – Hotham in Putney. Emma drew a comic strip which was a runner-up in the British Gas Generation Green Competition. The school will receive equipment including solar panels, LED lighting and a new energy-efficient boiler.

Bin the bag

Dog owners are being reminded to clean up after their pets following complaints about discarded dog waste bags.

Owners are warned that they must take used bags home for disposal or put them in the special bins provided – not just dump them on the street. If caught, culprits could face a fixed penalty notice for littering. Find out more at

www.wandsworth.gov.uk/dogs.

Help for disabled children

The Lady Allen Adventure Playground in Battersea has received a grant from the Wimbledon Foundation to provide transport to and from the venue for some of the borough's most vulnerable children.

The playground enables children with special needs and disabilities to play and have fun in a safe space. Find out more about applying for funding from the Wimbledon Foundation at

www.wimbledon.com/foundation. To read more about facilities for children with disabilities and special needs, including playgrounds, playschemes and youth centres, see

www.wandsworth.gov.uk/localoffer.



Mill history

Volunteers are needed to help research historic mills along the Wandle and develop heritage walks. As many as 90 different mills operated along the banks of the Wandle, powering industries from copper-working to textile printing. The volunteers will work with The Building Exploratory and Wandle Industrial Museum to research, map and document the river's rich industrial history. To find out more

email@buildingexploratory.org.uk or [020 7608 0775](tel:02076080775).

Get FREE business advice

Looking to grow your start-up or small business, or just thinking about setting up on your own?

Wandsworth Council's free package of business support could help give you the boost you need.

Free specialist help includes:

Wandsworth DigiTech

Delivered for the council by CPG Executing Consulting Ltd, DigiTech provides advice, training, masterclasses and support, and aims to kick-start a self-sustaining network of digital and technology firms across the borough, turning Wandsworth into the UK's latest tech cluster. The network meets monthly and the theme of the next on April 4 will be

telecommunications and networking. Visit www.wandsworthdigitech.com

Wandsworth Foodies

The Foodies programme works with food-related businesses, start-ups and pre-start-ups with advice on finance, recruitment, markets and more, plus one-to-one coaching, mentoring, networking and support. Visit www.wandsworthfoodies.co.uk

For other help available to small businesses including start-up and growth support and help to supply the Nine Elms regeneration area, visit www.wandsworth.gov.uk/yourbusinessyourgrowth.

CASE STUDY: Wandsworth Foodies



“ This business initiative from Wandsworth Council was a God-send and exactly what my company needed ”

Jayke Mangion runs businesses including the Brickwood Café in Tooting and the Powder Keg Diplomacy bar in Battersea. He received help through the Wandsworth Foodies programme.

“I subscribe to the Wandsworth e-newsletter and saw the offer for free business advice for food orientated venues in the borough. I enquired and set-up a phone meeting, not thinking to much of it.

“After spending 15 minutes on the phone I realised this was an amazing opportunity for myself and my business, and something I probably could not have afforded or would not have made the time for it on my own, as I'm so busy with the day-to-day of running my company.

“I met with my advisor Helen and instantly she was able to asses my business accurately and more importantly understood my needs moving forward, and was able to give me sound knowledge and advice on growth.

“She has presented my company with great opportunities for exposure on a bigger scale as well as generating great contacts and additional business though my door.

“This business initiative from Wandsworth Council was a God-send and exactly what my company needed at the right time. It has genially added great value to my business and set us up for continued growth. I never expected something like this to have come from the council but very much appreciated. ”



Freedom parade for Royal Marines

Residents lined the streets to witness members of the Southfields-based Royal Marines Reserve parade through Wandsworth town centre to celebrate being awarded the Freedom of the Borough.

They were conferred with the honour by the Mayor of Wandsworth Cllr Richard Field in celebration of their links with Wandsworth. To mark the occasion, 160 reservists, veterans and cadets headed by the Band of the Royal Marines paraded to the town hall.

The Mayor said: "This award pays tribute to the bravery and dedication of these volunteers who have served their nation with great distinction as part of this famous and historic Royal Naval force. We are immensely proud to be associated with them." The unit's commanding officer Lt Col Ed Moorhouse said: "Since arriving in the borough in 2011, we have had unfaltering support from the borough council and its local residents. We are hugely proud of being part of Wandsworth."

The Unit's volunteers are not just part-time soldiers, but fully trained elite Commandos. Volunteers were first recruited to The City of London reserve unit in November 1948 and in June 2011 its headquarters moved to Southfields.

The unit recruits from all over London, including Wandsworth, southern England and East Anglia. The unit will become the third from the country's armed forces to have received the Freedom of the Borough in recent years. The 2nd Battalion

Royal Tank Regiment (2RTR) received it in 2011 while another reserve unit, the London Regiment, based in Clapham Junction, was accorded the honour in 1992.

The council has two armed forces champions and provides extra support to forces members and their families, including priority housing. Visit www.wandsworth.gov.uk/armedforces.

“ The parade is a great opportunity to show the community what we are - it is a very proud moment for us all.

**Lance Corporal Cadet
Jordan Bobbin (17)**

“

I have been in the cadets for about three years and done a few of these parades with the cadets but nothing on this scale. It is a very proud moment for me.

Marine Cadet
Nathan Taylor (15)

”



campaigns | branding | brochures | flyers | adverts | banners | newsletters | digital | signage | forms | and more

WANDSWORTH & Design Print

your message, brought to life.

www.wandsworthdesignandprint.com

wdp@wandsworth.gov.uk

020 8871 7508

Part of Wandsworth Trading Company



New school opens its doors

The borough's newest primary school - Oasis Putney Academy - has been officially declared open by the Secretary of State for Education Justine Greening.

The new school has been built on the site of the former Putney Hospital which closed in 1998. Over the course of the next few years pupil numbers will grow and it will eventually cater for up to 420 local children, helping to meet the rising demand for school places in this part of Putney. This is due partly to the increased birth rate but also because of the growing popularity of Wandsworth's primary schools – 92 per cent of which are judged good or outstanding by Ofsted - one of the best performance records in the country.

For more information about the new school visit www.oasisacademyputney.org

Courses for Muslim women

The Muslimah Network offers educational, vocational and recreational opportunities for local Muslim women and girls

Courses on offer will include GCSE Maths & English, home education support, ESOL, Science workshops, mental health and nutrition workshops, arts and crafts and the chance to obtain as a wide range of accredited qualifications.

Visit www.muslimahnetwork.org

Free respite for carers

If you are an unpaid carer for an adult who lives in Wandsworth who is unable to manage without your help, you may be able to access free respite from Carers Partnership Wandsworth. For more information and to see if you are eligible, call

[\(020\) 8877 1200](tel:0202088771200) or email

support@wandsworthcarers.org.uk



Somerset Nursery School

'Children make rapid gains in their learning...their achievement is outstanding'

Ofsted 2014



A stimulating, vibrant, challenging, inclusive environment where children are able to pursue their own curiosities, take risks and discover from first hand experiences.

Led by qualified, experienced teachers.

Links with local primary school with breakfast and after school club.

"My child has had a wonderful time at Somerset Nursery. He is more confident and sociable. I would highly recommend this nursery to anybody." Parent

To arrange a visit please call the school on 0207 223 5455

157 Battersea Church Road, London SW11 3ND

www.somerset.wandsworth.sch.uk

Maintained and funded by Wandsworth Council



“ It’s always good coming back to Roehampton, to give back to the community where I come from and help show the way to younger ones. I just hope that when they upgrade Roehampton they can add a few football-related things to help distract them from trouble.

Ibrahim



Championship striker returns to inspire young people

A promising young striker from the Alton estate who signed with Championship team Cardiff City has returned to Roehampton to encourage the next generation of footballers and coaches.

Ibrahim Meite, 20, grew up in Roehampton, where his sporting talents were spotted at a young age. His career breakthrough came just last summer when he started playing for non-league side Harrow Borough. His goal scoring soon got noticed and he helped the team reach the first round of the FA Cup.

Wandsworth Council youth worker Emmanuel Sempa knows Ibrahim from his time in Roehampton, and set the young striker a target of scoring 15 goals for Harrow by Christmas, which he duly smashed well ahead of schedule. This earned the young forward a trial in October with Premiership champions Leicester City, before finally moving to Cardiff City in January this year.

Ibrahim, nicknamed the Shark for his predatory goalscoring prowess, now has a contract running until the summer of 2018, and is looking forward to making a first team impact.

In February this year he went along to Roehampton Youth Centre, on Holybourne Avenue, to catch up with Emmanuel and to watch the next generation of talented local youngsters take on visitors from Battersea.

The council’s plans to regenerate the Alton Estate include proposals for a new multi-use games area, alongside new facilities for Roehampton Youth Centre and the Base youth hub on Danebury Avenue. Find out more about the plans on page 5.

“ We’re all proud of what Ibrahim has achieved and the most important thing is for others to know that there are opportunities out there if you’ve got the right attitude to achieve.

Emmanuel Sempa

Wandsworth youth worker



Grants for community projects

Local projects, including help for families, arts programmes and support for children with dyslexia, ADHD and hearing disabilities are set to share more than £143,000 from the most recent round of the Wandsworth Grant Fund.

Twenty-one community projects, charities and local organisations are in line for a grant. A further 26 arts projects will share £35,000 towards new performances in this May's Wandsworth Arts Fringe. See a full list at www.wandsworth.gov.uk/wgf

The Fund supports a wide range of not for profit activities in the following categories:

- Arts and Culture
- Environment and Attractive Neighbourhoods
- Children and Young People
- Citizenship and Civic Engagement
- Raising Aspirations and Potential
- Health and Well being

Investing in the
Brighter Borough



To find out how you can
apply to the Wandsworth
Grant Fund:

- www.wandsworth.gov.uk/wgf
- wgf@wandsworth.gov.uk
- [@grantswandb](https://twitter.com/grantswandb) on twitter



Reminiscence Arts

Recent grant fund recipients



Understanding Autism

A2ndvoice brings together parents, carers, professionals and children and adults living with autism spectrum and related conditions. It raises awareness and understanding through group work, workshops and holiday stay and play sessions at Tooting Leisure Centre.

The Wandsworth Grant Fund is partly funding the second Wandsworth Autism Fayre on April 25 at Tooting Leisure Centre.

Find out more at www.a2ndvoice.com.

Prison reading groups

The project ran four Family Days at Wandsworth Prison, run by volunteers from Prison Reading Groups and Roehampton University's National Centre for Research in Children's Literature.

In total 242 children got the chance to read with family members in prison. They got a bag containing books, which they were allowed to keep.

"The book bag scheme is a great idea; my grandson and son enjoyed it very much and loved all the lovely little ideas in the bag." - prisoner's grandparent

"Excellent scheme. Johnny loved getting the book and we looked at it together" - prisoner parent.

Working with people with dementia

Age Exchange Reminiscence Arts creatively explored the memories of people with dementia in the Tooting Bec care home using art, song, music, and engaging with objects. It was carried out with the Trinity Laban Conservatoire of dance and music.

The project was based on research which shows that this approach helps improve the mood and positive behaviours of older people with advanced dementia and gives a voice to people who are often 'hidden away'. The 24-week project ended with a performance at the BAC to bring all the work to life.



Anti-Slavery workshops for children

Just Enough UK received grant funding to deliver workshops in six borough primary schools.

The last, in Swaffield School, was filmed by CNN as part of its Freedom Week programming— you can view the film by searching 'CNN Freedom Project' on Youtube.

The project aims to show children that slavery is not just in the past – but is very much a problem of the present.

“I learnt that if we don't stand up to slavery now, then people will still get abused.”

Getting people into work

More than 150 local people went along to a jobs fair in Nine Elms to find out about careers and training opportunities in the regeneration area's thriving construction and engineering industries.

The event was led by the council's Work Match local recruitment team, which so far has supported 611 local people into work. It brought together the area's major landowners, developers and construction companies all under one roof.

- The next Workmatch jobs fair is on April 21 (see page 2).
- See a list of current vacancies on the Workmatch website at www.wandsworthworkmatch.org.

Newly-qualified crane driver Errol Lodge was at the fair:

I've managed to speak to a whole range of people all in one go and hopefully I have some good leads and I'm feeling more positive than when I arrived to be honest. I've also signed up with a Work Match, which I didn't know about before.



Artwork courtesy of Fifth Capital London

New home for Royal Academy of Dance

The Royal Academy of Dance has taken a step closer to moving into brand-new purpose-built headquarters on the site of a former Homebase warehouse in York Road, Battersea. The new academy, designed by architects Patel Taylor, features state of the art facilities. There will be more opportunity for the local community to hire space, watch or participate in dance activities and performances at the new building.

Get set for lower speeds

From Spring 2017 the council will install a **20mph speed limit** across all residential streets in the borough.

Red Routes, A-Roads and B-Roads will not be affected.

The main aims are to reduce the number and severity of road accidents.

www.wandsworth.gov.uk/20mph



What residents said

59%

of residents support a **20mph limit** on residential streets

64%

of residents said a **20mph limit** should not apply on main roads



'I know I've made a difference'

Ever thought about a career as a foster carer but don't know if you've got what it takes?

Met Police intelligence officer PC Gary Cook explains that holding down a demanding job is no barrier to caring for a child.

"I was persuaded by a friend who fosters for Wandsworth Council to give it a go. My partner and I started as respite carers, looking after children on a short-term basis, we're hoping to be approved as long-term carers for a seven year old boy.

"I wanted some company for my son, who's now 9. From the initial assessment it was five months before a child was placed with us. We knew the children we would be caring for came from difficult backgrounds, and could have physical and emotional problems, so we do our best to make them feel safe from the first moment they come into our home.

"We get continuous support – we have our own social worker that we meet with regularly and there's ongoing training, such as how to deal with issues such as identity and loss and managing difficult behaviour. I understand that people are worried that they won't be able to help but there's just so much support for you

– you're not on your own.

"People think that if they're working they can't help, but my partner and I both work full time and the fostering team make sure that if there are any problems, like not being available for the school run, that we can overcome them.

The fostering team will look at your needs and help you make it work. You also get an allowance, so you're not out of pocket.

"It's also natural to worry that you might not be good enough, or that the placement might break down, but you are also free to say no if a placement doesn't feel right for you – you won't be judged.

Even if you can only offer respite care once every four weeks then that's fine – you're still having an input into people's lives.

"There are times when I know that I've made a difference – when a young girl that stayed with us for just three weeks asks if she can stay in touch, and when children that came to me from troubled backgrounds become a success and do well at school. It's just incredibly satisfying.

There just aren't words to explain how important this job is."

“ It's natural to worry that you might not be good enough, or that the placement might break down but you are also free to say no if a placement doesn't feel right for you – you won't be judged. ”



See our new video at youtube.com/WandsworthBC

For an informal chat about whether fostering is for you, email foster@wandsworth.gov.uk, call [\(020\) 8871 6666](tel:02088716666) or fill in the form at www.wandsworth.gov.uk/fostering.



Get to know your health

Around 1500 people visited the council's Get to Know Your Health pop-up shop in Southside Shopping Centre in its first two weeks, with more than 600 of them getting a health MOT from the shop's trained nurse who checked their blood pressure, BMI and blood sugar levels.

More than a hundred people were subsequently referred to their GP for further checks, and others were referred to one of the council's lifestyle services, including weight management course, the Wandsworth stop smoking service and health trainers.

Forty people also had an HIV test in the three days the test was offered and people with asthma COPD or any heart or lung condition were signed up for a free airTEXT pollution messaging service.

The shop was a completely free drop-in service to help people get check ups and advice while they shopped. If you were unable to get there, you can get a full healthcheck





from your GP if you are between 40 and 74 and do not have certain long-term conditions. Find out more at

www.wandsworth.gov.uk/healthchecks

Contact the Stop Smoking Service for help quitting tobacco at www.wandsworth.gov.uk/stopsmoking

Sign up for airTEXT at www.airtext.info/signup

For links to other services to help you lose weight, get fit, drink less, improve your mental health and more, visit www.wandsworth.gov.uk/health.

The NHS wants to engage with local people on a draft Five Year Forward Plan to improve local health care services and make them sustainable for the long term.

Read a summary of the plan at: bit.ly/STPsummary

To take part in the discussion

- Follow [@SWLNHS](https://twitter.com/SWLNHS) on Twitter, using the hashtag [#talkinghealthcare](https://twitter.com/talkinghealthcare)
- Invite NHS spokespeople to your meetings to talk about the Five Year Forward Plan
- Email: swlccgs@swlondon.nhs.uk
- Write to South West London NHS, 5th floor, 120 The Broadway, Wimbledon SW19 1R

Start well, live well, age well

Wandsworth best for reducing bed blocking

Wandsworth's adult social services department is currently ranked the best in inner London when it comes to arranging safe and timely discharges from hospital.

Across London as a whole only Redbridge currently has a better record on tackling bed blocking, according to NHS figures.

Bed blocking, or delayed transfer of care (DTOC) as it is officially known, occurs when patients cannot be discharged from hospital because they do not have appropriate support systems in place to care for them when they arrive home, such as carers, a nursing home place or home adaptations.

Delayed discharges mean that acute-care hospital beds are occupied by people who do not need to be there, which has a serious knock-on effect on NHS in-patient services. It also means that people are unnecessarily forced to remain on a hospital ward when they would much rather recover and recuperate in the comfort and familiarity of their own home.

Many delays occur when agencies involved in health and social care do not properly communicate with each other.

Cabinet member for adult care and health Cllr Jim Maddan said: "Bed blocking is a serious problem for the NHS, so it is vital that social workers work closely with health service colleagues to ensure the right care packages are in place. In Wandsworth our discharge planning commences when a patient is first admitted, not when they are ready to leave."

Find out about adult social care in Wandsworth at www.wandsworth.gov.uk/acis



Wandsworth tops the book lending chart

2016 was a bumper year for the borough's libraries, with the largest number of book issues in the capital.

In total almost a million and a half items were loaned out. Children's books were especially popular – with more than three quarters of a million issued.

While other councils have been shutting libraries, Wandsworth's have gone from strength to strength in recent years.

All 11 libraries have remained open, Earlsfield Library has been completely redecorated and Battersea Library has been upgraded. Work has started on a brand new Wandsworth Town library on Garratt Lane and the council is also developing plans to replace another two existing branches, York Gardens and Roehampton, with new state of the art buildings offering a wide range of modern services.

All branches include facilities for children, and the children's library at Tooting has recently been completely refurbished. As well as lending books, there's a programme of activities for families to enjoy together, including arts and crafts, music and story times, plus space for children to study.

Making Chinese lanterns at Wandsworth Town library



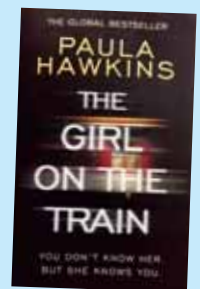
St Mary's school having story time at Battersea Park library



- In 2016 a total of 733,711 children's books and 698,941 adult titles were issued
- Balham loaned out the most books – 231,096.
- 51,684 books were delivered to people's homes. People who struggle to get out and about can use the Home Delivery Service
- 11 of London's 325 public libraries are in Wandsworth
- One of the most borrowed books of 2016 was *The Girl on the Train*. Roald Dahl remains popular with children.
- Wandsworth children's librarians sing more than 10,000 songs a year at rhyme time sessions

Top five books loaned out in 2016

1. *The Girl on the Train* by Paula Hawkins
2. *A Little Life* by Hanya Yanagihara
3. *A God in Ruins* by Kate Atkinson
4. *My brilliant friend Childhood*, Elena Ferrane
5. *A Brief History of Seven Killings*, Marlon James



Find out what's on at your local library at [better.org.uk/library/london/wandsworth](http://www.better.org.uk/library/london/wandsworth).



Check out
festival
highlights in
what's on?
Page 29

Get ready for the Wandsworth Arts Fringe

May 5-21

The annual two week arts festival includes 140 events, performances and workshops in all sorts of unusual spaces – from a hairdresser's shop, Tooting Market and countless street corners to libraries, schools, parks and pubs.

More than 15,000 people are expected to be part of the 2017 festival with a mixture of free and ticketed events.

Ticket costs have been kept to between £6 - £10 on average and are available from www.wandsworthfringe.com.

Brochures about the festival will be available from the end of March in all local venues, cafés, bars and libraries.



Follow us at:

[wandsworthfringe.com](http://www.wandsworthfringe.com)

Facebook: [WandsworthFringe](https://www.facebook.com/WandsworthFringe)

Twitter: [wwFringe](https://twitter.com/wwFringe)

[#WAF2017](https://twitter.com/wwFringe)

Wandsworth Arts Fringe is brought to you by Wandsworth Council, supporting the arts and culture industries across the borough. The festival is funded by Wandsworth Council with generous contributions from Arts Council England, Greenland and Southside Shopping Centre. Organised by Enable Leisure and Culture.

what's on?

EVENTS FOR MARCH
TO MAY 2017



Wandsworth Arts Fringe 2017 Festival highlights

Tickets available through wandsworthfringe.com

#WAF2017
@wwfringe

How to be listed

Send details (including access for people with disabilities) by April 17 to:

whatson@enablelc.org

We cannot guarantee that your entry will be inserted. This is a free service. The information in this guide has been provided by the advertisers themselves. Wandsworth Council and Enable accept no responsibility for the accuracy of the information or for any event not organised by the council or Enable.

What's On is compiled by Enable Leisure and Culture, a public service mutual organisation.

enable
leisure & culture

Children's events outlined in yellow



Thursday 11 May 8 - 10.30pm

Pitchbend Productions Hoops and Loops

Hoops and Loops will showcase London's freshest circus talent, transforming the beautiful surroundings of the Tooting Tram and Social into a dreamscape of visual delights featuring acrobats, aerial artists and other unusual creatures.

Tooting Tram and Social Club, 46-48 Mitcham Lane, SW17 9NA

Tickets: £10/£8 concessions available



Wednesday 17 May 9.30 - 10.45pm and Thursday 18 May 9.30 - 10.45pm

Tom Green Tom Molineaux

Born a slave Tom Molineaux fights his way to freedom then comes to London in 1810 to prove himself the world's greatest boxer. A huge crowd watches him fight the great English champion - but will they allow him victory? A new play based on an extraordinary true story.

The Arches at St Mary's Church, Putney High Street, SW15 1SN

Tickets: £12/£10 concession available



Saturday 20 and Sunday 21 May, 12.30 - 4.30pm

Puppets with Guts Rampaging Rhinoceros

Following its successful debut last year, we are expanding Hidden Heathbrook to a whole weekend of theatre, circus, music, puppetry and art. Bring a picnic, play some games, be entertained by stunning live performances and discover the fantastical world of Hidden Heathbrook.

Rampaging Rhinoceros is an interactive big puppet mass movement spectacle. The biggest crash of rhinos are on the loose in



Heathbrook Park. Come along any time on Saturday 20 May and create your very own magnificent cardboard rhino head and join the biggest cardboard rhino stampede in Wandsworth at 4pm.

Hidden Heathbrook, Heathbrook Park, St Rule Street, SW8 3EH. 5 minute walk from Wandsworth Road Station

Tickets: Free, no booking required, just turn up

what's on?

EVENTS FOR MARCH
TO MAY 2017

**Saturday March 11,
1.30 to 5.30pm**

Science Family Fun Day

Fun packed afternoon of science for all the family.

Travel to the stars or take a trip to the moon in the Astrodome Planetarium, test your skills on the Astronaut Trail, build a Stomp Rocket, experiment in the Weather Workshop and create a flying science craft in the Make and Take Flight room. Plus, take on a Family Challenge. Aimed at families with children aged 3-11. **Entry: £3 per child, siblings £2.50, adults free.**

John Burns Primary School, Wycliffe Road, London, SW11 5QR
www.sciencefamilyday.com
Supported by British Science Week.

**Sunday March 12,
Sunday April 9,
Sunday May 14,
Sunday June 11, 8am
to 1pm**

Charity Car Boot Sale

Support the Friends of Queen Mary's Hospital by coming along to their charity car boot sale. All profits going to the charity. **£5 blankets, £10 cars, £15 large vans. £1 parking for buyers.** Queen Mary's Hospital Car Park SW15 5PN.
www.qmhfriends.carboot.co.uk

Thursday April 6, 6 to 7pm, every Thursday

Children's Football Coaching for 4-8 year olds.

£40 for six classes, first session is free
Please call or email Dave to register for a free trial class on 07969669153 or



Mondays 8 to 10pm and Tuesdays 12noon to 2pm

Mosaic Making Classes for all levels (plus additional Mindful Mosaic Courses)

Learn all the basics of mosaic making and more advanced and experimental techniques in a small and supportive class. **Cost £20 per session or £75 for block of 5 classes.** At artist's home studio, 6 Crowborough Road, Tooting SW7 9QQ
All details at www.glitteringshards.com or text Concetta on 07960 109860.



Friday March 24 and Saturday March 25, 7.30pm

An Evening With An Immigrant Inua Ellams & Fuel with Black Theatre Live

Born to a Muslim father and a Christian mother in what is now considered by many to be Boko Haram territory, in 1996 award-winning poet and playwright Inua Ellams left Nigeria for England aged 12, moved to Ireland for three years, before returning to London and starting work as a writer and graphic designer. Littered with poems, stories and anecdotes, Inua will tell his ridiculous, fantastic, poignant immigrant-story of escaping fundamentalist Islam, directing an arts festival at his college in Dublin, performing solo shows at the National Theatre, and drinking wine with the Queen of England, all the while without a country to belong to or place to call home. Running Time: 60min. Age: 15+.

Tickets: £15.50 available to book online

Tara Arts Tara Theatre, 356 Garratt Lane, Earlsfield, SW18 4ES
www.tara-arts.com

danddfootiefocus@live.co.uk
Saint Cecilia C of E School Sports Hall, Sutherland Grove, Wandsworth, SW18 5JR
www.danddfootiefocus.co.uk

Thursday April 6, 7 for 7.30pm to 8.30pm

Talk on River Watermen

A talk by Bob Crouch – past Master of the Watermens Guild - on the Thames River Watermen. Bob is now an author and lecturer using his experience on the Thames to tell the story of its people and their environment. **£5 entrance, payable on the door.**

St Mary's Church, Battersea Church Road, SW11 3EN

Contact: events@batterseasociety.org.uk
wheelchair access

Saturday April 8, 7pm

Homegrown Festival Party

Young artists and performers descend on Battersea Arts Centre in an event to celebrate the finale of the Homegrown Festival.

This is a creative occupation; a party by young people, for young people. Join us for an evening



of live entertainment, fun and fresh new voices. Presented by BAC Young Producers. Battersea Arts Centre, Lavender Hill, London SW11 5TN
Tickets: £5 available online www.bac.org.uk

April 13, May 11, 7 to 9pm

Women's Institute
A new branch of the Women's Institute meets each second Thursday of the month. There will be a variety of speakers and sociable activities. Contact
Wandsworth.common.wi@gmail.com or Twitter @WIWandsworth
Admission: £4 per person
Vestry Hall, 10a Wiseton Road, SW17 7EE

Thursday May 11, 7 for 7.30pm to 9pm

Talk on the Stained Glass Windows in St Mary's Church, part of Wandsworth Arts Fringe

Talk by Caroline Swatch, stained glass expert and ex head of department at Central St Martin's.

£5 entrance, payable on the door.

St Mary's Church, Battersea Church Road, SW11 3EN



Saturday June 3, 1pm to 5pm

Live at the Bandstand

Get ready for a free afternoon of live music and more at the Battersea Park Bandstand. Battersea Park Bandstand SW11 4NJ
www.enablelc.org/bandstand

Free, no tickets required, just turn up

Contact: events@batterseasociety.org.uk
wheelchair access

**Saturday May 20,
10am to 4pm
Plant Sale and Healthy
Living Community Day**

Plants for sale, delicious healthy foodie treats and free healthy exercise workshops. Come along, bring your family and friends, and get some horticultural inspiration as you relax in Share's beautiful 2.5-acre walled community garden based in the grounds of Springfield University Hospital in Tooting. There will be a large stock of bedding, vegetable and herb plants for you to choose from. The Share Gardening team will also be available on site for free gardening advice, which you'll be able to mull over while you munch on one of our healthy eats!

Share Garden, in the Grounds of Springfield University Hospital, 61 Glenburnie Road, Tooting, London, SW17 7DJ

www.sharecommunity.org.uk/about-us/how-find-us#ShareGarden
Free event for all the family. Just turn up or register online at



Thursday May 25 – Saturday May 27, 7.30pm

Richard Gadd: Monkey See Monkey Do

What kind of monkey you ask? Is it real? Is it metaphorical? A mere comic device? A poor attempt to fill space in this blurb? A sexual fantasy? Gareth Bale? A snappy title decided before the brochure deadline that later hindered the creative process when monkeys had to be incorporated into the show somehow? Only time will tell...* (*...it's metaphorical.)

Age Recommendation: 16+. Running Time: 60 mins
Battersea Arts Centre, Lavender Hill, London SW11 5TN
Tickets: £12.50, £10 concessions, available online www.bac.org.uk

<http://bit.ly/2jZArhl>
To find out more, email marcomms@sharecommunity.org.uk or telephone 020 7801 9821

**Sunday June 4,
10.30am, judging at
12.30pm**

**Battersea Park Dog
Show**

The popular dog show returns, where pets can be entered into a class – a choice of pedigree and novelty classes.

Entry to the show is free and the fee to enter a class is £1.50 per dog, per class. Entries will be taken on the day from 10.30am. Judging starts at 12.30pm and the winner and five runners up in each class will receive rosettes. Bring the whole family and join in the fun.
Battersea Park (near Boules area) SW11 4NJ
www.enablelc.org
For more information call 020 8871 7124.



May 20 - 26, 10am to 4.30pm

Locals Art Hut

Welcoming all levels of artistic talent regardless of age, ability, experience showcasing locally inspired art. Thrive is the leading UK charity that uses gardening to bring positive changes to the lives of people living with disabilities or ill health, or those who are isolated, disadvantaged or vulnerable. Thrive Battersea Park welcomes these festival events to help enhance awareness of the diversity and quality of their work. This will be their fifth consecutive year in the Chelsea Fringe, which attracts wide media coverage and other publicity.

**Saturday April 1,
11am or 2pm**

**Spring Warm-Up
Event**

Participate in 'Tell the Canvas' at Thrive Battersea Park Open Day, for a chance to be invited to enter work in Locals Art Hut this May.
£5 per person/hour

**Saturday May 20, 2 to
4.30pm**

**Tactile sculptures by
Yiorgos Bouteris**

Locals Art Hut will launch his 2017 Thames inspired collection. Drop-in to experience the feel of the materials, and meet the artist.

**Sunday May 21,
11am to 1pm**

Following on from his February residency at Thrive, meet the illustrator of brand new drawings based on Thrive gardens, Battersea Park and the wider local area.

Sunday May 21, 2pm

Sophie Marsham

Learn about art made from found and vintage materials. Attend an all ages sculptural demonstration presented by south west London based sculptor, Sophie Marsham. Sophie will be showing a photographic selection of her work since 1993 created from reclaimed objects, revealing the creative magic that is possible when working with items that are ordinarily discarded.
£2 per person

**Wednesday May 24,
12noon to 2pm**

Charlie Rollo-Walker

Mixed media portrait box workshop incorporating natural materials, with art therapist Charlie Rollo-Walker.
£5 per person
Thrive, Battersea Park SW11 4NJ
For further information visit: popsyset.com/community-productions/

Save the date!

9 – 11 June 2017

**Balham Literary Festival
Happy, Health, Home?
Produced by Dulwich Books of West Dulwich**

The second annual Balham Literary Festival will take place over the weekend of 9 – 11 June 2017 at the Bedford Pub in Balham, with the theme 'Happy, Healthy, Home?' It will explore health, mental and physical, therapy, exercise, parenting; examining what makes for happiness, ease and disease. What is the concept of home in the 21st century; migration, exile, refugees, nomads and settlers?

Festival highlights will include Henry Marsh CBE (notable neurosurgeon and author of Do No Harm), Thomasina Miers (cook, journalist, author, and founder of Wahaca) and The Unmumsy Mum (blogger extraordinaire and author of The Unmumsy Mum Diary).

You can also learn how to create one's own habitat with cookery and gardening. Authors will include experts in these areas as well as travel writers, enthusiasts, novelists, poets, narrative non-fiction writers. And there'll also be fun events for children.

To view the full programme and to book tickets please visit www.balhamliteraryfestival.co.uk or get in touch with Dulwich Books on 020 8670 1920.

**BALHAM
LITERARY
FESTIVAL**



Thomasina Miers (founder of Wahaca)
Photo: © Caroline Irby

How to furnish your home on a budget

When your budget is tight, it's important to make the right decisions when you're buying household goods. Citizens Advice Wandsworth has been looking at local sources of cheap furniture and appliances.

Charity shops can be a good way to find second-hand items that have been safety checked and can often deliver. Prices might be a sofa for £60 or a wardrobe for £50. Delivery is usually £15-20. Local shops include the British Heart Foundation and Salvation Army shops on Wandsworth High Street, the Trinity Hospice furniture shop on Putney Bridge Road, or Oasis near Tooting Bec tube.

Online, on Freecycle, people advertise unwanted items they are giving away, but you can also post a request for something. You normally have to collect yourself. You can find the Wandsworth branch of Freecycle by visiting www.freecycle.org and searching for your local area.



Many people use internet sites such as Gumtree, eBay and Preloved to buy secondhand furniture. Prices will be cheaper than new but you have to be a little bit careful. Think again if you are asked to pay in advance for delivery, to make a deal outside the website or to pay by a money transfer. Find out how to protect yourself at www.moneysavingexpert.com.

People who want to make a small weekly payment sometimes use the rent-to-buy online stores such as Bighthouse or PerfectHome, but this can be much more expensive because a service and insurance agreement may be compulsory and the interest rate much higher. A better option might be to talk to a credit union about borrowing a small amount. Our local one is the Wandsworth Plus Credit Union. Find out more at www.wandsworthpluscu.co.uk www.cawandsworth.org




Get your **FREE NHS Health Check** from your GP or selected Wandsworth pharmacies

For more information call the council's public health team on **(020) 8871 5054** or visit www.wandsworth.gov.uk/healthchecks

- Aged 40 – 74 years
- Not had a NHS Health Check in the last 5-years
- Not been diagnosed, or treated for stroke, diabetes, kidney, or heart disease
- Wandsworth resident, or registered with a Wandsworth GP.

**NHS
HEALTH
CHECK**

Helping you prevent

- diabetes
- heart disease
- kidney disease
- stroke & dementia

AD.1086b (5.14)



**Time
to quit?**





You can get stop smoking support without needing an appointment:

- Pop into any pharmacy in your area
- Get in touch for up to date times and locations of our drop-in clinics

Get in touch...
 Freephone: **0800 389 7921**
 Email: stopsmoking.team@wandsworth.gov.uk
www.wandsworth.gov.uk/stopsmoking

TC.1908(5.14)

Doing it online

Using our website helps keep your council tax bills low

Report a waste problem

wandsworth.gov.uk/waste

Request a housing repair

wandsworth.gov.uk/housingonline

Search planning applications

wandsworth.gov.uk/planningregister

Report a street problem

wandsworth.gov.uk/streetproblem

Apply for a school place

eadmissions.org.uk

Book an MOT

wandsworth.gov.uk/MOT

Report noise and nuisances

wandsworth.gov.uk/noise

Apply or renew a parking permit

wandsworth.gov.uk/parking/permits

Report graffiti for removal

wandsworth.gov.uk/graffiti

Report an abandoned vehicle

wandsworth.gov.uk/abandonedvehicles

Tell us if you are moving in or out of Wandsworth

wandsworth.gov.uk/MIMO

Enquire about your housing options

wandsworth.gov.uk/housingoptions

Pay it online

It's now easier to pay online at wandsworth.gov.uk/payments

Pay your council tax

wandsworth.gov.uk/paycounciltax

Pay a parking fine

wandsworth.gov.uk/parking/payment

Pay your rent

wandsworth.gov.uk/rents

Pay for a marriage or civil partnership ceremony

wandsworth.gov.uk/ceremonypayment

Pay your business rates

wandsworth.gov.uk/paybusinessrates

Pay a waste or littering penalty

wandsworth.gov.uk/waste-enforcement

Talk to us online

weekly e-newsletter

wandsworth.gov.uk/enews



facebook.com/wandsworth.council



twitter.com/wandbc



linkedin.com/company/wandsworth-borough-council

My Account

Create an account and you will only have to sign in once to access the main council services.

wandsworth.gov.uk/myaccount

Report It app



Wandsworth Report It makes it easier for anyone to report problems like flytipping, graffiti and other environmental issues. Search for the Wandsworth Report It app on the Apple, Android or Windows app store.

Other contacts at the council

Adult Social Services

(020) 8871 7707

Benefits Service

(020) 8871 8080

Births, Deaths, Marriages and Voting Hotline

(020) 8871 6120

Council Tax

(020) 8871 8081

Early Years and Childcare

(020) 8871 6348

Environmental Services Hotline

- including noise, pest control, private housing and licensing
(020) 8871 6127

Family Information Service

(020) 8871 7899

Housing Management and Repairs

Call your area team or management organisation

Parking and Streets Hotline - including concessionary travel and highway licensing

(020) 8871 8871

Planning and Building Control

(020) 8871 7620

Rent Collection Service

(020) 8871 8987

Rubbish, Recycling and Litter

(020) 8871 8558

Schools and Admissions

(020) 8871 7316

FOSTER

Be there for a young person in Wandsworth

and we'll be there for you

To find out more visit wandsworth.gov.uk/fostering
or phone (020) 8871 6666 (Quote ref no: AD.1184)

