

# Brightside

The magazine of Wandsworth Council

Issue 183 March 2018



Why business is  
booming in  
Wandsworth Town

page 12

Average council tax set to remain UK's lowest  
Meet the neighbours - US Embassy moves in  
Hundreds of new street trees



Delivered to 140,000 homes - Balham Battersea Earlsfield  
Furzedown Putney Roehampton Southfields Tooting Wandsworth

# 2018/19 Budget

## where your money goes

This is the money spent on providing council services. Your council tax contributes to these costs, but money also comes from Government grants such as the New Homes Bonus (a Government grant given to councils who build a high number of new homes), retained business rates and the Better Care Fund.



**Adult Care:**  
Services to help elderly and vulnerable residents including day centres, home help and support for carers £73m



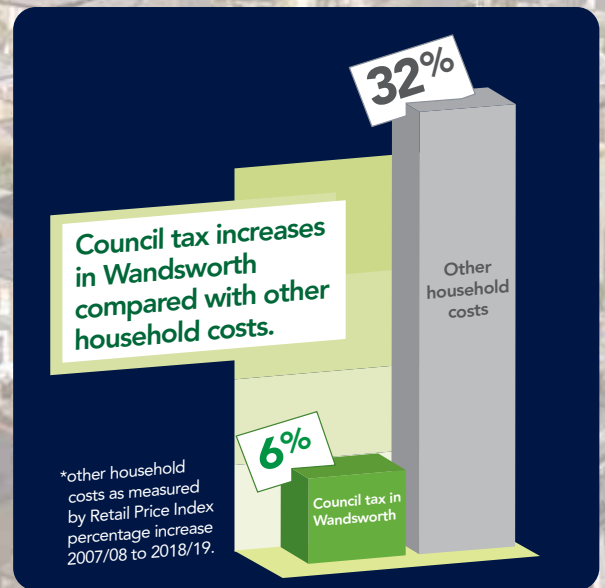
**Housing:**  
Homelessness and homeless prevention services, private sector housing standards £6.16m



**Community Services:**  
Parks, roads, transport, crime prevention, leisure centres and libraries £40.34m



**Children's Services:**  
Support for schools, early years, safeguarding and services for children and families £70.89m



To obtain a copy of Brightside in large print or audio version please telephone (020) 8871 7266 or email brightside@wandsworth.gov.uk

### Your Brightside

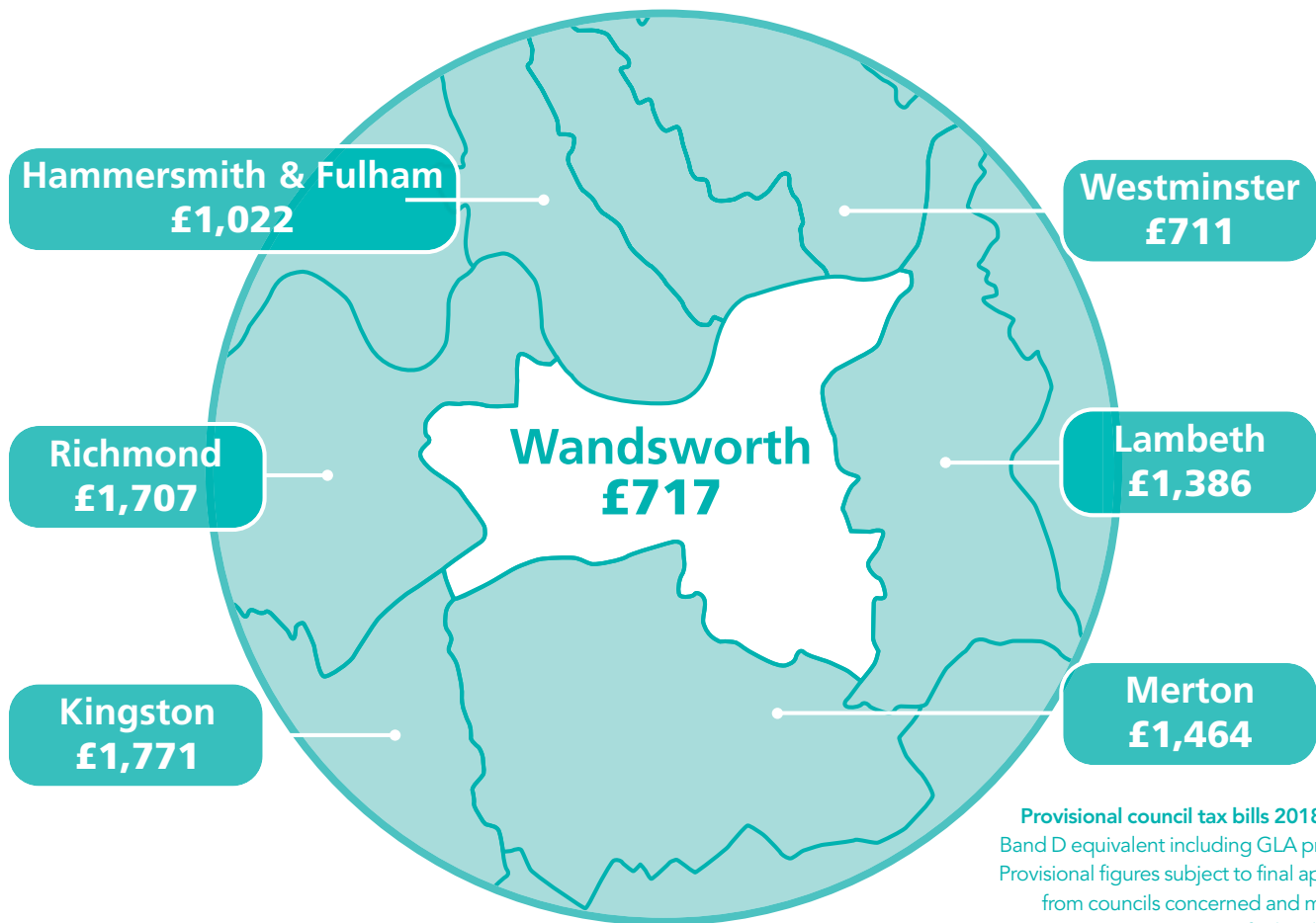
Your Brightside is distributed by London Letterbox Marketing. We expect all copies of Brightside to be delivered to every home in the borough and pushed fully through the letterbox. It is produced by the council's corporate communications team. It is the only publication delivered to every household in the borough. We would like to thank all our advertisers for their support. Brightside will consider display advertisements from non-council bodies (excluding recruitment) and reserves the right to decline advertisements. The council neither accepts responsibility for the content of nor endorses any non-council advertisements.

- Editorial (020) 8871 8902
- Advertising (020) 8871 7266

If you have a comment about the magazine please telephone: (020) 8871 8902/6173 or email: brightside@wandsworth.gov.uk.

Brightside is printed on environmentally friendly paper, please recycle.





# Average council tax UK's lowest

**Wandsworth residents will again pay the lowest average council tax in the country while vital social care services continue to be protected.**

This month councillors are expected to agree to freeze all the other elements that make up local council tax bills but increase funding for social care by applying a two per cent increase to bills to raise an extra £1m. They have also agreed to exempt young people leaving council care from council tax.

This would mean on average an extra charge of £8.40 a year or in total the rough equivalent of three large high street coffees in a 12 month period. This year the Mayor of London has increased his share of bills by 5.1 per cent. His precept will rise by £14.21 to £294.23 meaning the total average Band D bill in Wandsworth from April onwards will be £722.65.

Council leader Ravi Govindia said: "We are freezing most of

the elements that make up our overall budget to ensure we continue to offer our residents the best value for money local services in the country.

"But we also wanted to make sure we protected the important social care services we provide for elderly people, those with a disability, those who are sick or vulnerable and also importantly the support we provide to local carers, who are often the unsung heroes of our community. We want to make a real difference to the quality of life of our residents and those people who may need a bit of extra support."

Since council tax was introduced in 1993 Wandsworth residents living in a Band D property have saved a combined sum of more than £10,000 when compared to the average Londoner. At the same time they benefit from 97 per cent good or outstanding schools, 11 libraries, weekly bin collections and other high quality services.

**Inside**  
 March 2018  
[www.wandsworth.gov.uk](http://www.wandsworth.gov.uk)

Cover photo: Picture of Tania Rahman by Roofful Ali (roofful.com)

Creating a brighter borough for all	5	Hundreds more street trees	16-17
Thousands of new homes	6	WIN a year for free on	
Tackling flytipping	7	Chariot shuttlebus service	22
More electric car charging points	8	Quit smoking in 2018	24
Gigafast broadband for 10,000 homes	9	Get ready for the Wandsworth Arts Fringe	26
More school places	10	What's On	27-29
Sharp fall in pollution	11	Useful numbers	31
US Embassy moves in	13		



Sort out another bin for your recycling.



[www.wandsworth.gov.uk/recycling](http://www.wandsworth.gov.uk/recycling)



A brighter  
borough for all

Find out your borough priorities at:  
[wandsworth.gov.uk/brighterborough](http://wandsworth.gov.uk/brighterborough)

# Why life in Wandsworth is getting even brighter

**In November I wrote about what we are doing to make Wandsworth the best place to live in London.**

We are not content with having the lowest average council tax in the UK, we also want you to have the best possible services – the best schools, the best parks and the cleanest streets.

Over the next few pages you will find updates on our work.

I am cheered by a recent report in The Sunday Times which praised Wandsworth for making a huge contribution to improvements in London. It said that The Battersea Power Station

development in Nine Elms and our plans to replace the one-way gyratory in Wandsworth Town, along with the £12 million redevelopment of the Ram Brewery, are three of the biggest things happening.

My desire is simple: to make sure that Wandsworth is a place where everybody can get on. That is why we will be spending £150 million to build 1,000 new homes targeted at people who live or work in our borough. The majority, at least 600, are designed to help people on average or below average incomes buy or rent.

Cllr Ravi Govindia  
Leader of  
Wandsworth  
Council



I am also delighted to say that all of the money raised by this year's two per cent council tax rise will be spent on our most vulnerable residents through a £1 million increase in the social care budget.

Please do have a look at our priorities at [wandsworth.gov.uk/brighterborough](http://wandsworth.gov.uk/brighterborough) and let me know what you think.

[campaigns](#) | [branding](#) | [brochures](#) | [flyers](#) | [adverts](#) | [banners](#) | [newsletters](#) | [digital](#) | [signage](#) | [forms](#) | [and more](#)

WANDSWORTH  
**Design  
& Print**

your message, brought to life.

[www.wandsworthdesignandprint.com](http://www.wandsworthdesignandprint.com)

[wdp@wandsworth.gov.uk](mailto:wdp@wandsworth.gov.uk)

020 8871 7508

Part of Wandsworth Trading Company



# Thousands of new homes on the way

**More than 4,000 new homes will be built across Wandsworth in the coming years.**

In Battersea, 57 new council homes are expected to be complete by the summer, with building work on more than 200 others starting in the coming months. The developments are part of the Building Homes for Wandsworth People programme, launched last summer, to build 1,000 new council homes for shared ownership and for rent across the borough, as well as for sale to help pay for the scheme.

Wandsworth Council is also working with development partners on major estates regeneration schemes in Roehampton and Battersea. During February the council and Taylor Wimpey consulted local residents on the latest updated proposals to build 2,000 new homes at the Winstanley and York Road estates. All secure council tenants will be guaranteed a newly-built home on their estate along with all owner-occupiers, as well as a new combined leisure, community, library and children's centre and an improved park.

At Roehampton's Alton estate, the council's proposals with Redrow will see 1,000 new homes, with the same guarantees for secure council tenants and owner-occupiers, as well as a new library, community hub, improved shopping area and park.

CLlr Ravi Govindia, Leader of the council, said: "We're now some years into London's best housebuilding and regeneration schemes, which taken together are set to make available a steady supply of new council, shared ownership and homes for sale every few months, most importantly prioritised for local people."



Cabinet member for housing, Clare Salier with CLlr Govindia

Claire has got her foot on the housing ladder through the shared ownership scheme with the help of the council's home ownership team: "I was living with my parents in Southfields and I was at that age where I wanted to move out but I couldn't afford to buy outright and I didn't want to waste my money renting. I went on the council website and registered. They contacted me when a flat that I liked became available and they advised me on financial advisors and solicitors to start the process."

See videos about Building Homes for Wandsworth People, including Claire's story, on the council's YouTube channel



**60.5%**  
available at  
discounted  
rate

**£150**  
million

**1,000**  
new  
homes

# Keeping your streets clean

Last year 1,700 of you took part in Wandsworth Council's clean streets survey and shared your views on fly tipping, littering, and the local area.

We asked for your views as part of the council's Clean Streets campaign, which focussed on awareness, education and enforcement. As well as information on when to put out your rubbish, dedicated enforcement teams are out daily cracking down on those who break the law. Over 4,000 fines have been issued to those caught littering and fly tipping since April 2017.

**More than 50 per cent of you said you recycle household items you no longer want by taking them to a local charity shop.** You can also use Wandsworth Council's bulky waste collection that starts at just £17.50.

**86 per cent of you said that you thought fly tipping was a problem where you live and 43 per cent of you said that you had reported fly-tipping.** If we know about it, our enforcement team can take the necessary steps to make sure people are caught. You can easily report fly tipping via the council's website.

**More than 90 per cent of you said you feel part of the Wandsworth community, 80 per cent of you said you love where you live, and 90 per cent of you said that you support your local community when you can.** By working together we can keep Wandsworth clean and free from fly-tips.



The council has worked with children from Shaftesbury park School, who designed their own anti-littering signs



The council is trialling some innovative ideas in Tooting to help combat littering across the borough. You can take part in a number of activities including a community clean-up day, sprucing up Church Lane car park, and gum chalking events. To get involved email [Jessica.Lewis@richmondand-wandsworth.gov.uk](mailto:Jessica.Lewis@richmondand-wandsworth.gov.uk)



## How you can help keep Wandsworth clean:

Leave your waste and recycling bags out on the correct day each week. See [www.wandsworth.gov.uk/waste](http://www.wandsworth.gov.uk/waste) to check your collection day.

Show your support on Twitter using the hashtag **#KeepWandsworthClean**

Report flytips on the council website [www.wandsworth.gov.uk/flytipping](http://www.wandsworth.gov.uk/flytipping)

Pass on evidence that could help identify a flytipper in confidence to [flytipwitness@wandsworth.gov.uk](mailto:flytipwitness@wandsworth.gov.uk)

# More electric car charging points

**Wandsworth is set to become the most electric vehicle-friendly council in the country with plans announced for hundreds of new charging points and the establishment of an eco-friendly electric car club.**

At least another 350 electric vehicle charging lamposts will be offered on request to residents who have already bought, or are about to buy, a new electric car. In addition charging plugs will be installed in every suitable lampost within two pilot zones – around 150 in parts of Thamesfield ward close to Putney High Street and around 240 in a large area of Shaftesbury ward in Battersea. The

results from these trial schemes could see lamppost charging extended to other residential areas.

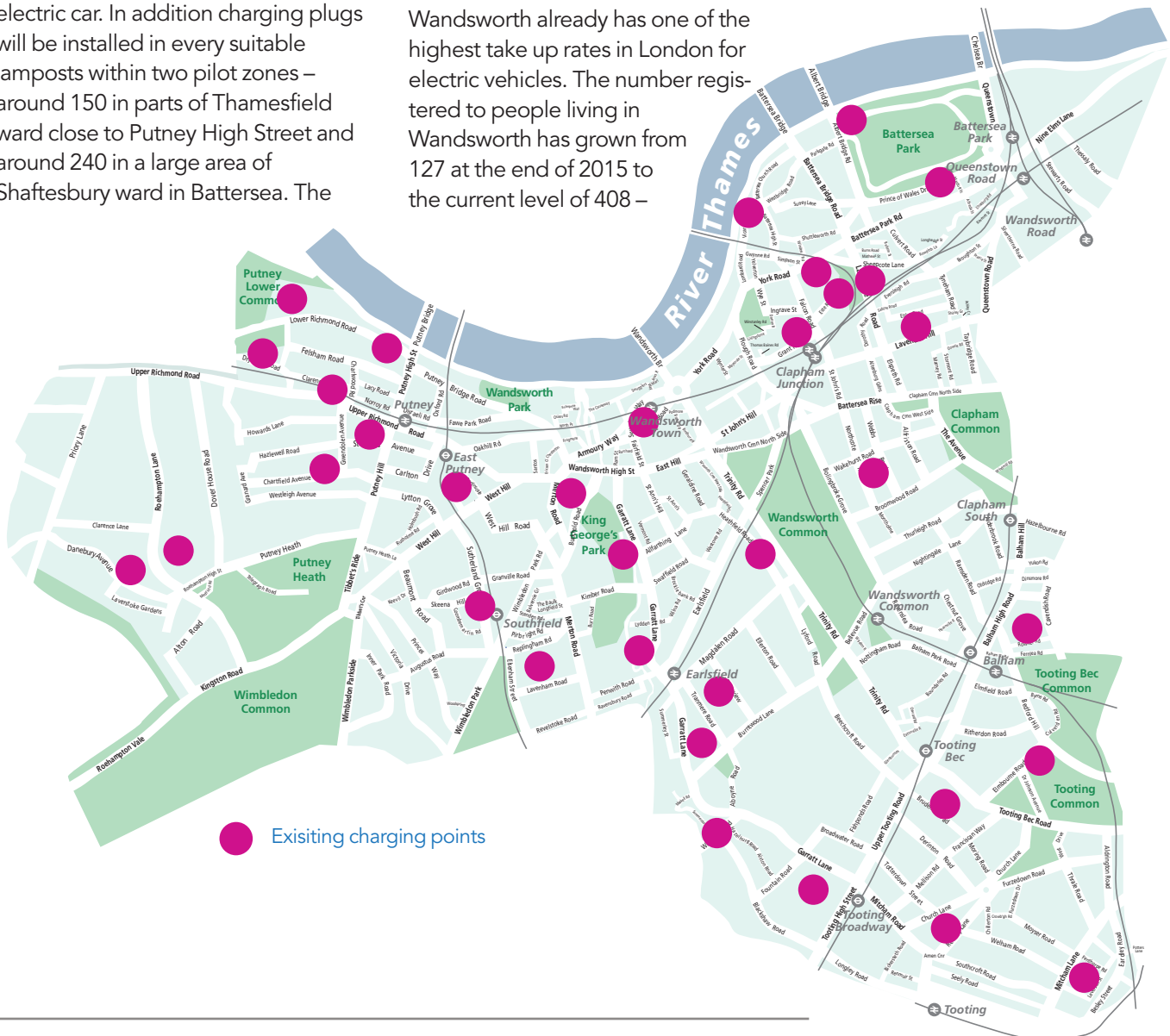
A new e-car club is being established for Wandsworth providing electric vehicles for hire by the hour, day or week, and another 120 Source London car charging points will be installed, augmenting the 99 already installed in 33 separate places in Wandsworth.

Wandsworth already has one of the highest take up rates in London for electric vehicles. The number registered to people living in Wandsworth has grown from 127 at the end of 2015 to the current level of 408 –

with numbers rising by around ten per cent every three months.

This builds on the council's initiative to deliver more electric charging points, reduce air pollution and improve transport structure

Visit [wandsworth.gov.uk/driveelectric](http://wandsworth.gov.uk/driveelectric)







# Media hubs for town centres

Twenty multi-media hubs are being installed around the borough, replacing tatty and obsolete old phone boxes. Local people will be able to charge their phones, make free phone calls and surf the net via ultra-fast broadband

InLink/BT say the network will deliver "the fastest and most robust public wi-fi network in the UK". Speeds are up to 85 times faster than standard broadband, meaning local people can download a two-hour film onto their smartphone or tablet in around 12 seconds. Safeguards will be built in to make sure inappropriate content cannot be downloaded. Screens will show local information such as traffic news and weather, plus commercial advertising which will pay the cost of this free public service.



# 10,000

homes get  
**Gigafast  
Broadband**



**10,000 homes on housing estates can now access super-fast broadband - making Wandsworth the borough with the largest number of fibre-enabled homes in the capital.**

Wandsworth is working with a company called Community Fibre Ltd to install its 'Gigafast' broadband in council-managed blocks. The aim is to enable residents to easily get online to search for jobs, work and study from home, run small businesses, access council service and more.

So far homes across the Savona, Patmore, Carey Gardens, Doddington, Kambala, Rollo, Surrey Lane, Winstanley and York Road, Ashburton, Arndale and William Willison estates have the capacity to access the service with others being hooked up now.

The Gigafast service has clocked download speeds of over 1,000 megabits per second (Mbit/s) – around 47 times faster than the UK average. It costs residents £50 a month to subscribe to the unlimited 'gigabit per second' speeds. Other packages are also available for residents that do not need a full speed service. Customers don't have to pay a line rental charge as with other providers, and downloads are unlimited.

To find out more visit  
[communityfibre.co.uk](http://communityfibre.co.uk)



**Obed Yeboah** runs Digilab Tooting based at the Trident Business Centre, which offers young entrepreneurs support and coaching in the fields of computer programming, video production and editing, social media content and robotics.

He has welcomed the new BT kiosks: "At the moment, if I needed to make a phone call I wouldn't even think of using the existing ones - they're so out of date and the user experience is poor. These days everything's about the touchscreen, mobile phones,

computers - even the ordering kiosk in McDonalds are touchscreen!

"These new kiosks look amazing. They're trendy, attractive, innovative and modern - and I love the fact they have wi-fi and the screen is so big. This is the type of user experience people have come to expect. They'll be a great addition to the high street and definitely something that you'd want to stop and use. I love the idea of using it to charge my phone, which I think will be a big hit with people."

# More school places to meet demand

**Wandsworth is making a significant investment in its schools to cope with an increasing demand for places.**

Projections show an increased demand for secondary school places as children born during a baby boom a few years ago reach year 7. A £14.3m programme of expansion is proposed at St Cecilia's, Chestnut Grove and Ark Putney.

Planning permission has also been granted for a new block to enable Graveney school to expand.

Most of the borough has enough primary places, but some more are needed in Thamesfield ward in Putney. The council will spend three million pounds increasing capacity at Brandlehow.

There will also be further investment in special needs education, including two more classes at Paddock and a resource base at Riversdale school. A resource base at Ravenstone school has already been created.



## Dad praises local school

One of the schools to recently receive an upgrade is Ravenstone School in Balham. As well as a hub and sensory rooms for pupils on the autistic spectrum, the school has new classrooms and a new playground.

Local dad Iain MacDonald sends his two sons (pictured above) to the school and said he's delighted with the education they've received:

"Both of our children attend Ravenstone and I have to say that both my wife and I are extremely impressed with the school. I can quite honestly say that we feel as though we definitely 'lucked-out'.

"The school is fabulous in almost every respect but worthy of particular mention is the head, who is beyond superb. I have rarely met a more engaged, proactive, intelligent and committed individual. I admit that this may sound OTT, yet that is how very many parents feel."

## GCSE English and Maths

70%

achieved  
9-4 grades

3<sup>rd</sup>  
inner  
London

national  
figure  
64%



Wandsworth school places are also in demand due to high standards – 97 per cent of schools are rated good or outstanding by Ofsted, including all the borough's secondary schools.

Harris Battersea has been ranked fourth nationally and second for disadvantaged pupils following the publication of UK-wide school performance figures.

The 'Attainment 8' score is based on pupils' best eight GCSE results including English and Maths. Harris Battersea led the way in Wandsworth with an Attainment 8 score of 59.8, closely followed by Graveney School (58.5), Ashcroft Technology Academy (57.1) and Saint Cecilia's (53.8).

The borough average was 49.5, compared to a national figure of 44.6. This puts the borough into the top five in inner London.



# Sharp fall in pollution

## Pollution levels have dropped sharply in Putney and Nine Elms.

In Putney High Street in 2017 levels of nitrogen dioxide in the air breached EU standards eight times. In 2012 there were 1726 breaches – meaning that since then there has been a 99 per cent reduction in breaches.

The fall in pollution coincides with the introduction of cleaner buses and a Low Emission Bus Zone. The council has also made improvements to Putney High Street's layout and traffic signals to ease queuing, and a ban on delivery vehicles stopping to unload has been introduced to reduce congestion further.

In Nine Elms in 2017 levels of particles (PM10) in Nine Elms breached the daily mean EU limit 13 times. This compares to 43 times in 2016 – a 70 per cent drop in breaches.

The reduction, which has happened despite the fact that the area is home to Europe's largest construction project, has been put down to close and effective working with the companies building the new homes, offices and shops in Nine Elms.

Find out about the council's work to improve air quality at [wandsworth.gov.uk/airquality](http://wandsworth.gov.uk/airquality)



# New look for Putney

**Putney High Street is to get a revamp to improve traffic flow, reduce pollution and make it safer and more attractive, following feedback from local people.**

The first phase costing up to £640,000 will include:

- Improving the junctions of Putney Bridge Road and Lacy Road with the High Street
- Installing a piece of public art or 'green wall' on the cinema façade
- Uplighting key buildings
- Installing a 'Copenhagen Crossing'

to make the busy High Street easier to cross

- Replacing guardrails
- Planting trees
- Reducing the speed limit to 20mph
- A trial cycle lane contra-flow
- Improving cycle parking

Other proposed improvements are being reviewed, including further improvements to the cycle network, more public art and moving the taxi rank, and will be introduced as more money becomes available.

## New rules to protect parks

**New bylaws have been unanimously voted through to protect the borough's parks from criminal damage, anti-social behaviour and vandalism.**

The new bylaws have nothing to do with curtailing children's enjoyment in any way and will help the council run its parks effectively as possible for the enjoyment all residents, especially children.

The bylaws replace the current outdated ones that exist in Coronation Gardens, Furzedown Recreation Ground, Garratt Park, King George's Park, Leaders Gardens, Swaby Gardens and Tooting Gardens.

The new Department for Communities and Local Government (DCLG) model bylaws are already adopted by 14 other local authorities in London and will be used to cover a further 35 parks and open spaces across the borough, including old burial grounds and sports grounds, that currently are not protected by any bylaws.

Councillor Jonathan Cook, Cabinet Member for Community Services, said: "The existing Wandsworth bylaws that relate to our parks date back many decades and simply aren't relevant for 2018. For example one of the bylaws forbids cattle, sheep and goats being taken into our parks.

"We need modern bylaws in place that will help us to best look after, maintain and preserve our wonderful park resources."

Inspector Steve Biggs who helps police Wandsworth's parks said: "The service has not reported any child for flying a kite, climbing trees or playing ball games. We actively encourage parents to come along and enjoy our facilities. It's all about common sense."



A brighter borough for all



**The regeneration of Wandsworth Town is continuing this year, with new homes, shops and new library being built on the site of former council and South Thames College buildings in Garratt Lane.**

Wandsworth people can register their interest in new homes at the Wandsworth Exchange, a development

from one of London's biggest housing associations, London and Quadrant. There will be 201 new homes across four blocks, of which 29 will be affordable rent and 21 shared ownership. Building work is progressing well and should be completed by summer 2019. Phase one of the Ram Quarter housing development will be completed soon,

creating 663 private and affordable homes. Developers The Greenland Group are expected to open a new 2,208sq ft heritage centre in November, bringing to life the site's brewing heritage, including original listed machinery and equipment. There will also be a programme of community-based activities and art installations and a microbrewery.

## Business is booming for Tania

**Tania Rahman opened her authentic Indian street food restaurant Chit Chaat Chai in Old York Road in 2016 and said the regeneration of Wandsworth Town has done wonders for business since then. Business is growing by 20 per cent a year thanks to a growing lunch trade fuelled by new residents and businesses moving into the town.**

"I chose to open my business in Wandsworth because of the potential of the regeneration of the area. We're in the heart of London but there's also a lovely community atmosphere, especially in Old York Road. Everyone knows each other and we help each other out when there are issues.

"During the Old York Road Unplugged festival in June the atmosphere is electric – sometimes we do more business on the street outside than we do in the restaurant.



"I would say 50 per cent of trade is people from Wandsworth, but customers come from as far away as the East End. On Friday and Saturday nights it can be difficult to get a table.

"I would say to other businesses thinking about starting in Wandsworth that this is a great time to get in to the area. Rents are reasonable and I get help from the council through the small business rates relief scheme. I'd also recommend getting to know Caryl from the Wandsworth Business Improvement District, because she's really helped me."



Find out about help for small businesses at

[wandsworth.gov.uk/yourbusinessyourgrowth](https://www.wandsworth.gov.uk/yourbusinessyourgrowth)

Follow the Wandsworth BID on twitter @WandsworthTown

To find out if you're eligible for business rates relief by calling

[\(020\) 8871 5941](tel:020388715941)



# Welcome to Wandsworth

Brightside talked to the new US Ambassador Woody Johnson to find out how Embassy staff are getting on in their new home

**Why did you choose Wandsworth and Nine Elms as the venue for your new Embassy?** We looked at over 50 locations across London but what we saw in Nine Elms was unique. This was an area in zone 1 – it had the space we needed, convenient transport links, and incredible views over the river. The potential was obvious to us.

The council has been there every step of the way and they deserve a lot of credit for the way they have worked with us to make this happen. Big changes are happening now, new businesses are opening, new jobs are being created. Wandsworth is moving forwards and it's great to be a part of that.

**The Embassy has already become an iconic building and one of the key cornerstones of Nine Elms. What sort**

**of welcome have you had since you moved in?** This Embassy certainly has the wow factor. It's the most advanced and secure embassy we've ever built. But it isn't a fortress – the building is open, transparent and accessible. Local people can come right up close, use the public gardens and walkways we've built – they can even see and enjoy our new artwork from the path.

**How important is integration into the local community and what have you been getting involved with?**

Community is everything. We want to put down roots and feel at home here. For Americans, getting involved in the local neighbourhood is part of our way of life. We've been out there making new connections – with the local primary school, the local community



centre, Battersea Park. I've actually just come back from visiting New Covent Garden Market – an amazing place right on our doorstep.

**Are staff enjoying working in Nine Elms and the borough of Wandsworth?** Absolutely – we're all settling in great. We're all having fun going out, meeting new people and exploring new places. It will be interesting to see what it's like when spring and summer come around. I think we will enjoy this location even more than – say with summer walks by the Thames, or lunch in Battersea Park. But then maybe I'm being too optimistic – I was hoping we might get a long, warm summer this year but the local Brits at the Embassy keep telling me not to get my hopes up!



# Grant Fund now open

Investing in the Brighter Borough



Applications are now being accepted for Round 8 of the Wandsworth Grant Fund.

The fund supports the work of local not-for-profit organisations, including projects to support the arts, smarten up neighbourhoods, help young people, improve people's health and encourage good citizenship and civic engagement.

The deadline is April 9. Find out how to apply at [wandsworth.gov.uk/wgf](http://wandsworth.gov.uk/wgf)

**ValueYou** got a grant in round 6 of the Wandsworth Grant Fund. It is a charity that offers volunteers discount cards and gift vouchers from hundreds of small independent businesses. The cards are valid for two years and each volunteer also gets a one-off gift voucher.



It's completely free for volunteers and organisation to take part. Discounts of at least ten per cent are on offer from businesses including restaurants, dry cleaners, florists, chemists, beauticians and more. Find out more at [valueyou.org](http://valueyou.org).

Several volunteers from Wandsworth Oasis signed up. CEO Gill Perkins said: We signed up to support the scheme because we know the impact volunteers make to the local communities and wanted to show our appreciation. We have a team of volunteers who work really hard and we are pleased the scheme is available to them as a simple yet tangible thank you".



## Tributes paid to councillors

Tributes have been paid to two Wandsworth councillors who dedicated their lives to public service.

Gordon Passmore MBE served the people of Wandsworth as a councillor for 46 years and twice served as mayor. He was also a decorated war hero (above).

Stuart Finn represented the people of Bedford Ward from 1998 to 2010 and was made an Honorary Alderman in recognition of his years of public service.

**Quality Kitchen Facelifts**

**A new look for your old kitchen this Spring**

Why replace when you can reface?



- Door swaps to full kitchens
- tailored to your needs
- Huge choice of doors, worktops, appliances, sinks and taps
- The whole process managed from design to completion

[www.dreamdoors.co.uk](http://www.dreamdoors.co.uk)



**DREAM DOORS**<sup>®</sup>  
NEW LIFE FOR OLD KITCHENS

Call Mike For a Free Estimate:  
**0208 6969699**

[sw@dreamdoors.co.uk](mailto:sw@dreamdoors.co.uk)  
Dream Doors South West London, 10a  
Sunnyhill Road, null, London, SW16 2UH

Proud members of  
**Checkatrade.com**  
Where reputation matters







# WEST VIEW

BATTERSEA



## LUXURIOUS 1 & 2 BEDROOM APARTMENTS

Moments from Battersea Park and  
available through shared ownership

Register your interest  
[WestView-SW11.co.uk](http://WestView-SW11.co.uk)

A NEW PERSPECTIVE







A brighter  
borough for all

Find out your borough priorities at:  
[wandsworth.gov.uk/brighterborough](http://wandsworth.gov.uk/brighterborough)



# Trees galore

Look carefully and you will see that the image is made up of some of the **664 trees** planted this winter in **Wandsworth's residential streets, housing estates and parks.**

At least 500 more will be planted next year. All borough wards will be getting new trees, with the biggest number earmarked for Furzedown, Southfields, Wandsworth Common, Tooting, West Putney and West Hill.

The council looks after more than 60,000 trees in its parks commons and open spaces, while around 15,000 already grown in streets and on estates – making Wandsworth one of inner London's leafiest boroughs.

If you're interested in becoming a tree warden, email [wandsworthtreeward@aol.com](mailto:wandsworthtreeward@aol.com)







**Go!**  
**Ape!**  
LIVE LIFE  
ADVENTUROUSLY

**UNLEASH  
YOUR  
INNER APE**

**10%  
OFF  
PER PERSON\***

at Battersea Park, London



 TREE TOP ADVENTURE



 TREE TOP JUNIOR

**Book at [goape.co.uk](http://goape.co.uk)**

or call **0845 519 1825<sup>†</sup>** quote **BABRIGHT10**

\*Offer valid until 30th November 2018, excludes Saturday, bank holidays and purchase of gift vouchers. Discount code must be entered at time of booking. Only valid at Battersea Park, Tree Top Adventure and Tree Top Junior. <sup>†</sup>Calls cost 7p per minute plus your phone company's access charge. Participation and supervision ratios apply - please see our website.

# Game, set and match

**A half a million pound investment in improved tennis facilities is now complete with the installation of floodlights at King George's Park.**

The floodlights, which will allow play to continue until 9pm, have been installed by All Star Tennis, which manages 28 courts across the borough and has invested more than £500m in improving facilities. Courts at the four largest and most popular venues have been resurfaced and upgraded as part of the improvement programme.

All Star Tennis began working in the borough in 2002 when it began managing the courts on Wandsworth Common. In 2013 it teamed up with another tennis provider Will to Win and took on the other five venues in a partnership which has seen participation levels rocket by 80 per cent.

Find out about fitness, leisure and sports facilities in the borough at

[wandsworth.gov.uk/sport](http://www.wandsworth.gov.uk/sport)



## Fuel bills cut

**People living in more than 2,400 properties on council estates across Wandsworth will see their heating and hot water bills reduced by a further five per cent or more next month**

The reduction is due to the council's ability to purchase its gas supplies in advance at very competitive rates. Last year bills fell by ten per cent. This is being followed this year by a further reduction of five per cent which will cover the 12 month period from April onwards when new contracts come into effect.

The council's energy procurement record has led to significant cost savings for tenants and leaseholders in these properties over the past nine years. Bills for a one bedroom property are now 48 per cent lower than in 2009 while those residing in homes with two bedrooms have seen their bills fall by 51 per cent.

A prolonged and comprehensive programme of improved cavity wall insulation, combined with new double glazed windows, plus investment worth £15m over the past six years installing the latest generation of boilers and heating systems has also helped to significantly reduce energy usage.



## Book explores diversity

Author Ruby Lovell and illustrator Zara Merrick, both from Putney, have published a new children's book *Ruby Rides an Elephant*. The book explores questions about racial diversity and introducing children to the culture of South Asia, where the author was born. *Ruby Rides an Elephant* was published by Lychee Books on February 15.

## Common survey

Wandsworth Council has commissioned a management and maintenance plan for Wandsworth Common to establish its future care and to ensure it continues to meet the needs of local people. Residents are invited to feed into the plan by saying how they use the common, what they like about it and what changes they would like to see. The deadline to take part is March 16, but there will be another chance to comment at an exhibition and drop-in centre in the summer. Take the survey at <https://haveyoursay.citizenspace.com/wandsworthecs/wandsworth-common-18>

## Boat Races this month

The Oxford vs Cambridge Boat Races will be on March 24 starting at 4.30pm. Spectators can follow @putney\_bid on twitter for updates on offer and events in the town's bars, restaurants and pubs.





# First train on new tube track

**The very first train has travelled on the extension of the Northern Line to Nine Elms and Battersea.**

Two new junctions which will connect the extension to the existing Northern Line have now been completed, and the first train to travel over them was photographed on New Year's Day.

The extension, targeted for completion in 2020, is the first major extension to a Tube line since the Jubilee line in the late 1990s. When it opens trains on the new track will join the

Charing Cross branch of the Northern line via the new junction on the Kennington Loop.

The extension will bring Battersea to within 15 minutes of the City and the West End and is central to the regeneration of the area which is bringing in thousands of new homes and jobs.

Designs for a new underground station at Battersea Power Station have now been approved by Wandsworth Council. There will also be a new station in Nine Elms in Pascal Street.

## WIN – one year for free on Chariot

**One lucky Brightside reader could win a year's free journeys on the Chariot service.**

Chariot runs two services in Wandsworth, from Riverside Quarter to Clapham Junction and from Battersea to Kennington.

Riders download the Chariot app, available on Android and IOS, select a route and reserve their seat. You can track the driver's ETA in the app to make sure your journey is stress free. The journey is ideal for commuters, with the service designed to complement existing public transport options.

**For a chance to win a year's free riding, answer the following question:**

**What are the names of the two routes run by Chariot in Wandsworth?**

Email answers to [brightside@wandsworth.gov.uk](mailto:brightside@wandsworth.gov.uk), with Chariot Competition in the subject line, or send them to Brightside, Rm 143c, Wandsworth Town Hall, London SW18 2PU.

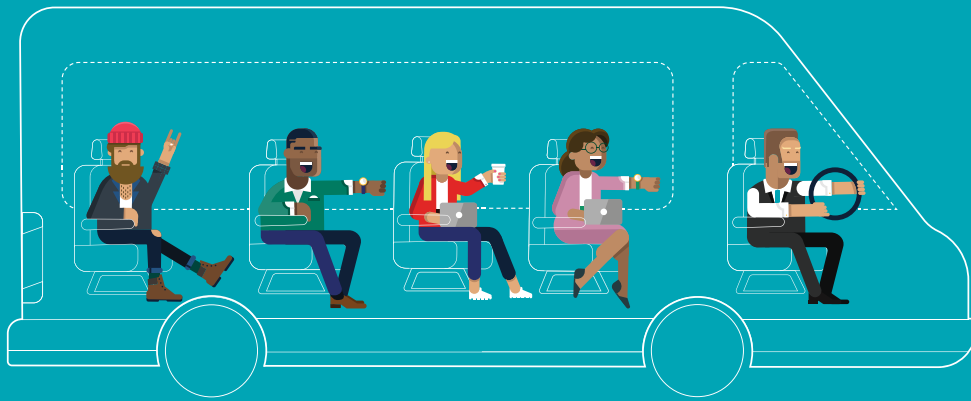


One entry per person. This competition is not open to employees of Wandsworth Council or Chariot. The one year for free prize is available on Chariot's routes serving the borough of Wandsworth.

**Closing date for entries is March 23, 2018.**



# chariot

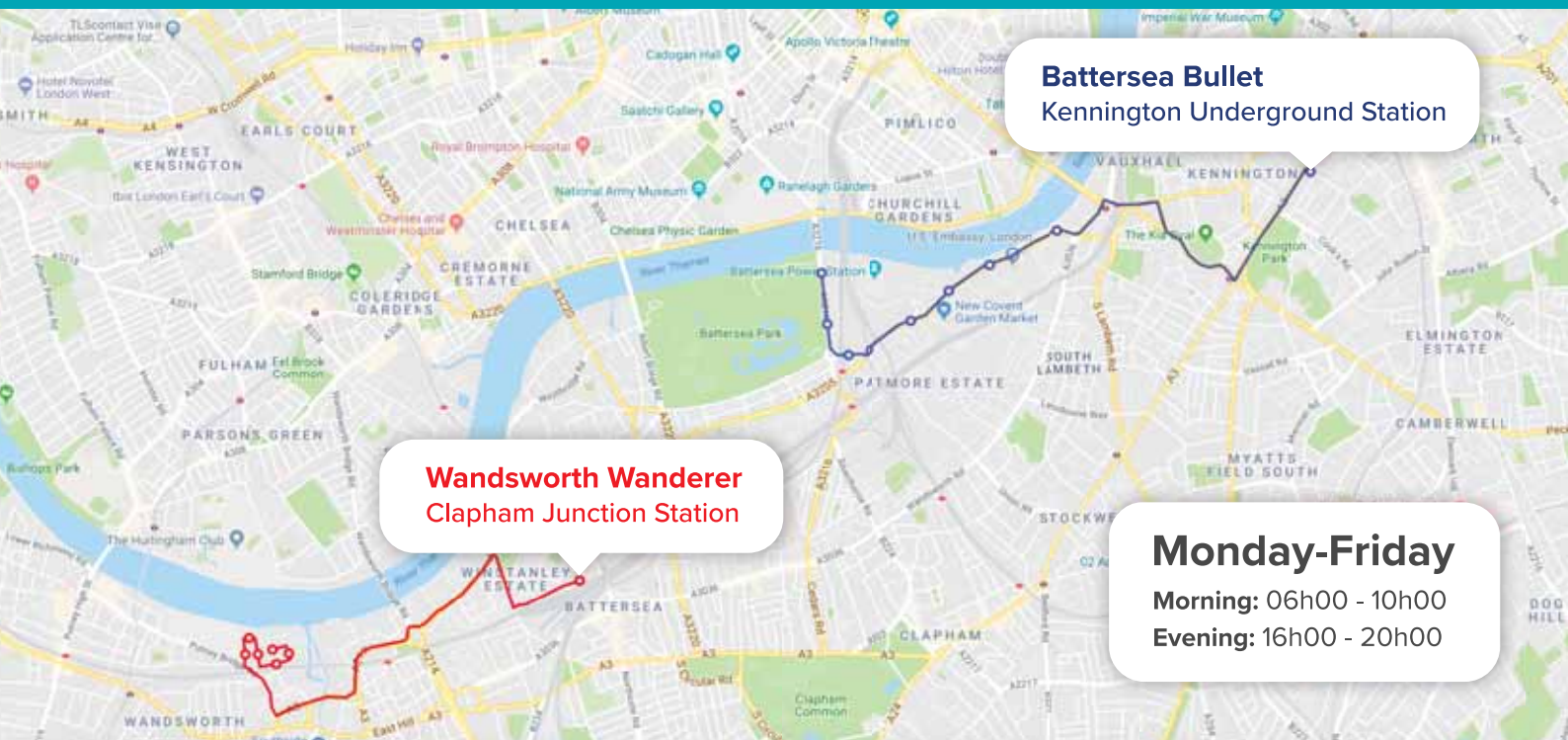


Chariot's 14-passenger vehicles will cover the first and the last part of your commute for as little as £1.60/ride. You'll have a guaranteed seat and you'll be able to track your driver's ETA so you can enjoy a comfortable and reliable journey at an affordable price. Just download the app on Android or iOS, select your route, and book your ride today!



Enjoy two weeks of free rides! Enter promo code:

**BRIGHTSIDE**



## Wandsworth Wanderer

**Morning:** Wandsworth Riverside > Clapham Junction  
**Evening:** Clapham Junction > Wandsworth Riverside

## Battersea Bullet

**Morning:** Battersea > Vauxhall > Kennington  
**Evening:** Kennington > Vauxhall > Battersea

# “I overcame abuse to help others”

**Yvonne Ellis, who was born and raised on the Winstanley Estate, is working to give victims of sexual abuse a voice.**

Yvonne was taken into emergency care by Wandsworth Council when she was 13 after telling a friend she has been sexually abused by her father.

She lived in different foster care and residential homes and at times struggled to make sense of her experiences, but now she helps other survivors with her organisation Daughter Arise. She is an inspirational speaker, has given a TEDx Talk, is an author and writer, and works for the same fostering team that stepped in to help her all those years ago

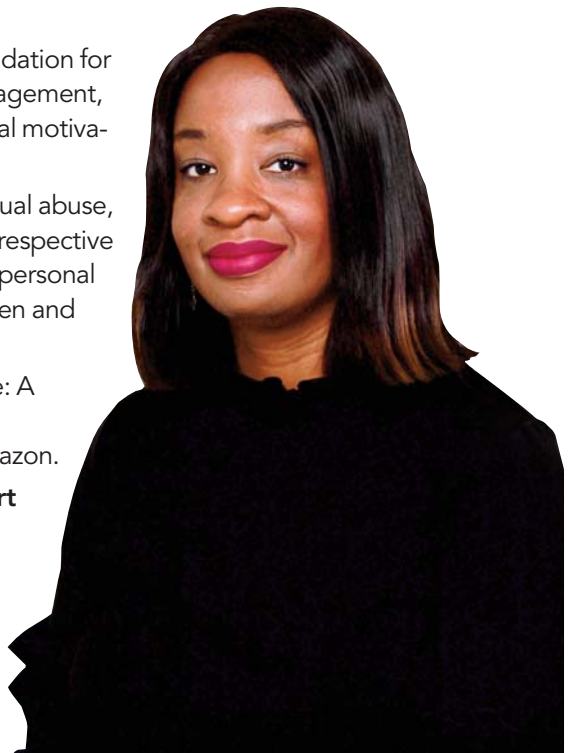
“The aim of Daughter Arise is to support those who have been through sexual, emotional and physical abuse and are struggling with the aftermath. We want

to help them build a solid foundation for their future by offering encouragement, support, education and spiritual motivation,” Yvonne told Brightside.

“We work with survivors of sexual abuse, their families and supporters irrespective of faith, culture, life choices or personal background we are here to listen and support.”

Yvonne’s book, *Daughter Arise: A Journey from Devastation to Restoration*, is available on amazon.

**Daughter Arise runs a support group, empowerment workshops, a mentoring and befriending service, advice and practical support. Find out more on the website at [daughterarise.org.uk](http://daughterarise.org.uk).**



## Are you ready for the borough council elections?

On Thursday 3 May 2018, the Borough Council Elections will take place in Wandsworth. 60 councillors will be elected to represent the 20 wards across the borough.

Only those on the electoral register can vote at an election or referendum. British, Irish, Commonwealth and European Union citizens over the age of 16 can register.

### Can't get to your polling station?

Polling stations are open from 7am to 10pm on polling day. If you know you won't be able to get to your polling station on Thursday 3 May (for example you are going on holiday), you can arrange for a postal or proxy vote.

### Deadlines for the Borough Council Elections:

- Register to vote by **Tuesday 17 April 2018**
- Apply to vote by post (or change existing postal or proxy vote details) by **5pm on Wednesday 18 April 2018**
- Apply to vote by proxy by **5pm on Wednesday 25 April 2018**

DO YOU  
HAVE  
A SAY  
IN YOUR  
FUTURE?

If you want to vote  
you must be registered

Borough Council Elections will take place on **3 May 2018. Make sure you don't miss out!**

Anyone not registered to vote should apply at **[gov.uk/register-to-vote](http://gov.uk/register-to-vote)**

Find out more at **[wandsworth.gov.uk/vote](http://wandsworth.gov.uk/vote)**



**YOUR VOTE MATTERS**

**DON'T LOSE IT**





# Let Work Match help you

**Wandsworth Work Match matches local jobseekers with available jobs. So far more than 800 residents have been helped into work by the scheme.**

Register with the scheme and be 'matched up' with suitable roles, as well as receiving pre-employment training, interview coaching, guidance with applications and ongoing support

once you find work.

For more information

[www.wandsworthworkmatch.org](http://www.wandsworthworkmatch.org)

(020) 8871 5191

[wandsworthworkmatch@wandsworth.gov.uk](mailto:wandsworthworkmatch@wandsworth.gov.uk)



In December government minister David Gauke visited Work Match and met Eva Sadier, Saad Chaudhry, Ben Kika and Daria Haas. Work Match help Eva into a job as a trainee quantity surveyor, Saad is now a design and social media assistant, Daria works at the Coffeeworks Project at the Power Station and Ben is a security officer at the Tideway development in Nine Elms.



Work Match works with partners to put on jobs fairs, including the annual Employ Wandsworth jobs fair (see advert below). In January more than 300 people went to the Construct Wandsworth Jobs Fair to hook up with potential employers and find out about construction opportunities on regeneration projects in Nine Elms and Wandsworth Town.

**FREE ENTRY - FREE ADVICE - FREE TALKS**

# EMPLOY

## WANDSWORTH 2018

**VISIT THE WANDSWORTH JOBS FAIR**

**Friday 20 April 2018**  
10am-3pm

**Civic Suite**  
Wandsworth High Street London, SW18 2PU

Register at  
[www.employwandsworth.org](http://www.employwandsworth.org)

**Work Match**  
securing jobs for local people

THE BRICHTER BOROUGH  
Wandsworth

01753 697 0118



# Support to quit smoking

**Make 2018 the year you give up for good – there's lot of free local support to help you.**

The Wandsworth Stop Smoking Service run by the council offers free help, advice and access to medication such as Nicotine Replacement Therapy. Call 0800 389 7921 or email [stopsmoking.team@wandsworth.gov.uk](mailto:stopsmoking.team@wandsworth.gov.uk)

There are free drop in clinics at the Cardiology Unit at Queen Mary's Hospital, Roehampton between 10am and 3pm and at the Atkinson Morely Wing of St George's Hospital, Tooting on Wednesdays and Fridays between 10am and 3pm.

If you're short on time, you can get one-to-one support from a professionally trained advisor over the phone. Call Monday to Fridays from 9am to 8pm and on Saturday and Sunday between 11am and 4pm. There's also an online portal where you can get information about other stop smoking services in your area. Visit: [london.stopsmokingportal.com](http://london.stopsmokingportal.com) or call 0300 123 1044.

Mark had tried unsuccessfully to give up smoking a few times, but after a health scare was referred to the Stop Smoking Team and has now been smoke free for eight months.



Not smoking has made a big difference to my quality of life, not to mention the extra cash in my pocket. I truly couldn't have done it without the support of the smoking cessation team, they were brilliant. I met with them weekly to review my progress and discuss how the range of nicotine replacement therapies were working to reduce my dependence. The combination of this face to face support and the nicotine replacement therapies (patches and inhalators) really worked for me.



Get your **FREE** NHS Health Check from your GP.

You must be aged 40-74, have not been previously diagnosed with diabetes, kidney disease, heart disease or stroke and have not had an NHS Health Check in the last five years.

For more information call the council's public health team on **(020) 8871 5026**, or visit [www.wandsworth.gov.uk/healthchecks](http://www.wandsworth.gov.uk/healthchecks)



Helping you prevent  
diabetes  
heart disease  
kidney disease  
stroke & dementia



# Are you at risk of diabetes?

Every week 15 people in Wandsworth are told they have diabetes – that's enough to fill ten double decker buses. But help is available in Wandsworth to prevent one of those people being you.

Type 2 diabetes is a serious health condition, but many cases can be prevented. The first step is to find out how much you are at risk – which is why the council, the Wandsworth Clinical Commissioning Group and Diabetes UK are encouraging you to check your risk using a dedicated online tool.

Make sure you know your height, weight and waist measurement. You will be asked questions about your age and ethnicity and then you can either have the results emailed to you or see them on-screen. You can also get links to advice and information about local services to help you eat well, move more and stop smoking – which will all help reduce your risk.

Take the test at [nhsdpp.diabetes.org.uk/c/wandsworth](http://nhsdpp.diabetes.org.uk/c/wandsworth)



## Sexual health help

Changes have been made to sexual health and contraception services in Wandsworth to make them easier to access.

They are now provided by the Central London Community Healthcare NHS Trust (CLCH), along with free condoms for under 25s, counselling, support groups, one-to-one support and help for people living with HIV.

There is now a single number that people can ring for appointments and to get information on available services. ☎ 0333 300 2100

[clch.nhs.uk/services/sexual-health](http://clch.nhs.uk/services/sexual-health).



## TYPE 2 DIABETES KNOW YOUR RISK

Finding your risk of Type 2 diabetes only takes a few minutes. It could be the most important thing you do today...

Check your risk online at  
[nhsdpp.diabetes.org.uk/c/wandsworth](http://nhsdpp.diabetes.org.uk/c/wandsworth)



Source: Public Health Annual Report 2016 - Diabetes in Wandsworth

Every week 15 people in Wandsworth are told they have diabetes



15,000 residents are living with the condition...



...and another 25,000 are on the verge of getting it.



TC2489 B&W4 (2.18)





# Warm up to WAF!

**The Wonderful World of WAF is back this May, but you don't have to wait until then to get involved.**

The Wandsworth Arts Fringe (WAF), Wandsworth Council's annual two-week arts and culture festival, will bring the borough alive from May 4-20.

Presenting over 170 events, performances and workshops, the festival spans the entire borough while keeping a local feeling. This year it promises to be more eclectic, exciting, and innovative than ever.

## Highlights include

- The Errant Stage bringing poetry to the heart of Wandsworth's communities.
- Shillington Gardens coming to life with dazzling eye-popping circus in the Big Top.
- Cutting edge theatre and outrageous comedy at **Fragility Takeover**.
- The **Be:UFest** in King George's Park- South London's disability inclusive festival.
- The **Pump House Gallery's** packed schedule of family activities.
- End the festival on a high with a boogie at the **Flagz Carnival**.

## Get involved

- Blackshaw Theatre Company is running production internships for ages 16-25 in April and May. Email [ellie@blackshawonline.com](mailto:ellie@blackshawonline.com) for more information/to apply.
- Community groups – for a chance to perform on the Errant Stage as part of the WAF showcase during the festival contact Fringe Producer [cath@wandsworth-fringe.com](mailto:cath@wandsworth-fringe.com)
- Aged 14 to 30, able or disabled? Get involved in Be:UFest in King George's Park on Bank Holiday Monday (May 7). For more information and a chance to perform, contact Zenovia on [zenovia@re-zone8.org.uk](mailto:zenovia@re-zone8.org.uk)
- Aspiring Poet? Contact Kate on [theerrantstage@gmail.com](mailto:theerrantstage@gmail.com) to find about our Big Red Tour Poetry Open Mic Night: in Roehampton on Sat 12 and in Balham on Sun 13 May.



For info on WAF warm up sessions, and to buy and reserve tickets to London's most eclectic arts festival visit [www.wandsworthartsfringe.com](http://www.wandsworthartsfringe.com)



# what's on?

EVENTS FOR MARCH  
TO MAY 2018



3-6 April and 9-13 April 10am-3pm

## Easter at Barn Elms Sports Centre

Popular activity camps for children 8-14 years. Sports might include tag rugby, archery, tennis and rounders. Prices from £50 for the four-day course, or from £62.50 for the five-day course.

Barn Elms Sport centre, Queen Elizabeth Walk, SW13 [enablelc.org/besc](mailto:enablelc.org/besc) or call 8876 9873

### How to be listed

Send details (including access for people with disabilities) by Friday 20 April to: [whatson@enablelc.org](mailto:whatson@enablelc.org). We cannot guarantee that your entry will be inserted.

This is a free service. The information in this guide has been provided by the advertisers themselves.

Wandsworth Council and Enable accept no responsibility for the accuracy of the information or for any event not organised by the council or Enable.

What's On is compiled by Enable Leisure and Culture, a registered charity.

**enable**  
leisure & culture

Children's events  
outlined in yellow

### Thursday 8 - Sunday 11 March daily from 11am

#### Affordable Art Fair

An array of affordable art for sale, for under £5,000.

**Tickets weekday from £8, weekend from £10. Free entry for under 16s with an adult.**

Battersea Park SW11. [www.affordableartfair.com](http://www.affordableartfair.com)

### Sundays 11 and 25 March 12-4pm

#### Family workshop: sounding objects

Join us for this event as part of the exhibition 'a hook but no fish'. Hands-on family fun – there'll be objects waiting to be tapped, rattled and played with. Drop-in event for all ages – children must be with an adult. **Free, no booking required.**

Pump House Gallery, Battersea Park, SW11 [pumphousegallery.org.uk](http://pumphousegallery.org.uk)

### 15 March 7pm for 7.15pm

#### Society AGM and Talk

AGM followed by 8.15: The First Clapham Saints: A London Village 1600 to 1720.

Talk by local historian Tim Walker. **Free, all welcome.**

Wandsworth Society, West Side Church Hall (corner of Melody Road and Allfarthing Lane) SW18 2QQ. [wandsworth-society.org.uk](http://wandsworth-society.org.uk)

### Saturday 17 March 1.30-5.30pm

#### Science Family Fun Day

Come with us back in time to visit some science of the last 200 years. What will you discover? Meet creatures with an ancient legacy in the Animal Show, build a slime monster, extract DNA and explore historical geometry. Play with polymers in Fantastic Plastics and

team up for the Family Turbine Challenge. Refreshments and science toy shop. For families with children aged 3-11. **Entry (includes all activities): £4 per child, adults free.**

John Burns Primary School, Wycliffe Road SW11 [www.sciencefamily-day.com](http://www.sciencefamily-day.com) @sciencefunday

### Monday 19 March 7.30pm

#### Putney WI

Make friends, have fun and learn something new. Meet third Monday of the month.

Putney Pantry, Putney High Street SW15. <https://putneywi.wordpress.com/> or call 07545 610909

### Friday 23-Saturday 24 March (Fri 6.30-11pm, Sat 12.30-5pm & 6.30-11pm)

#### The Gin Society

In London for the first time. Join us on our gin journey and discover 120 gins and sample some at our tasting station. **Early bird tickets: £14 plus booking fee.**

Civic Suite, Wandsworth High Street, SW18. Email [kendra@theginsociety.bar](mailto:kendra@theginsociety.bar) [www.eventbrite.co.uk](http://www.eventbrite.co.uk) and search 'Gin Society Festival'.

### Ends Sunday 25 March

#### The Game of Love and Chai

Nigel Planer's brilliant revision of the Marivaux's classic farce to a modern Asian family in England, employing Bollywood song and dance as class and passion clash when Rani meets Raj. **Tickets**

**from £15.50.** Tara Arts, 356 Garratt Lane, SW18 4ES. Book at [www.tara-arts.com/whats-on](http://www.tara-arts.com/whats-on)

# what's on?

EVENTS FOR MARCH  
TO MAY 2018

**Thursday 29 March**  
**11am, 2.30pm, 7.30pm**

## Lion

The true story of Saroo's remarkable journey from Kolkata to Hobart.

**Tickets £8/£5/£8.**

Tara Cinema, 356 Garratt Lane, SW18. Book at [www.tara-arts.com/whats-on](http://www.tara-arts.com/whats-on)

ducks that live here so use your detective skills to find out where they're hiding – find them all and receive a treat. Trail £1 each including a chocolate prize (plus paid admission). Plus, arts and crafts sessions making some egg-cellent gifts. WWT London Wetland Centre, Queen Elizabeth Walk, Barnes SW13



**Friday 30 March –**  
**Sunday 15 April**

## Easter Giant Duck Hunt

There's a group of giant rubber ducks on the loose at the Centre this Easter and we need your help to find them. They've disguised themselves as the



**Ends 31 March 8.30pm**  
**Beowulf**

Interactive performance-game and each performance is unique, depending on the audience's choices. Bringing the world of the ancient epic to life and asks why, after all these years, we still tell each other stories



**20 March - 4 April 7.30pm**

## The Paper Cinema's Macbeth

Immerse yourself on a journey through rugged Scottish landscapes and encounter storms, betrayal and murderous plot. Shakespeare's tragedy is vividly told with illustration, masterful puppetry and a live score. Hand-drawn puppets collide with music. Age guidance: 12 years and over. **Tickets £18, £15, £12.50 concs.** Battersea Arts Centre, Lavender Hill SW11. [bac.org.uk](http://bac.org.uk)

**From Monday 16 April**

## Summer art courses

Sign up for one of our popular art courses for summer term – try your hand at pottery, painting, book illustration, photograph, digital design and more. Putney School of Art & Design, Oxford Road SW15 [enablelc.org/psad](http://enablelc.org/psad) call 8788 9145.



about the monsters that lurk in the dark. Suitable for people 14 years and over. March 22-24 performances will be British Sign Language (BSL) interpreted. **Tickets £12.50, £10 concs.**

Battersea Arts Centre, Lavender Hill SW11. [bac.org.uk](http://bac.org.uk)

**Tuesday 3 - Friday 6 April**

## Junior rowing course

Take part in our rowing course. For children aged 11 (school year 7). Beginner 9am-12pm; intermediate/experienced 1.30-4.30pm.

**Cost £104.**

Barn Elms Boathouse, Queen Elizabeth Walk SW13 [enablelc.org/bebh](http://enablelc.org/bebh) or call 8788 9472

**Tuesday 3 - Friday 6 April**

## Junior tennis camp

Four-day holiday camp covering all aspects of tennis. For children 6-8 years 10am-12noon; 9-12

years 1-3pm. **Cost £60.** Millennium Arena, Battersea Park SW11 [enablelc.org/bpma](http://enablelc.org/bpma) or call 8871 7537

**3-6 April, 10am-1pm**

## Easter project - get ready for Carnival!

Learn carnival dance routines and design your costume for our carnival showcase with the award-winning Flagz Mas Band. **£2 youth club daily entrance.**

Providence House Youth Club SW11. [info@FlagzMasBand.com](mailto:info@FlagzMasBand.com)

**Monday 9 - Friday 13 April**

## Junior rowing course

For children aged 11 (school year 7) and over. Intermediate/experienced 9am-12pm; beginner 1.30-4.30pm.

**Course cost £130.**

Barn Elms Boathouse, Queen Elizabeth Walk SW13. Book at [enablelc.org/bebh](http://enablelc.org/bebh) or call 8788 9472

**Saturday 28 April**  
**10am-1pm (set up 9am)**

## Car Boot and Table Top Sale

**Cars £10, tables £5.**

**Entrance £1 adults.**

Granard Primary School, Cortis Terrace/Cortis Road SW15 playground entrance.



**Wednesday 2 May**  
**6-7pm**

## Reading by local author

Local author Sarah Lipton-Sidibeh, will be reading a selection of her poetry and short stories 'A Journey into Fear and Fantasy'. Putney Library, Disraeli Road SW15.

**3-6 and 9-13 April 10am-3pm (registration from 9.30am)**

## Battersea Sports Centre holiday fun

Fun and games for children aged 6-13 years, activities might include volleyball, football and badminton. Contact us for prices.

Battersea Sports Centre, Hope Street SW11. [enablelc.org/bsc](http://enablelc.org/bsc) or call 8871 8529



**May 4-20**

**Wandsworth Arts Fringe**

Lots of events are free of charge, and will be suitable for all the family. Many events will take place outdoors, as well as in more traditional arts venue – and there will be some truly unexpected venues to come and discover.

Boroughwide.

[www.wandswortharts-fringe.com](http://www.wandswortharts-fringe.com)

**Sunday 20 May  
12-4pm**

**Wandsworth Work and Play Scrapstore**

We're staging the second Hazelfest mini-festival. Part of the Wandsworth Arts Fringe, local artists and performers will be entertaining visitors as well as demonstrating artful re-use of materials. Live entertainment, stalls, arts and crafts and installations. Mini green in front of Hayesend Tower on Blackshaw Road SW17. [www.wandsworthfringe.com](http://www.wandsworthfringe.com)

**Tuesday 29 May-Friday  
1 June 10am-12noon**

**Tots activities**

Four day course for children aged 3-4 years. Different activities daily aimed at improving social skills, balance and general co-ordination. **Cost £60, £40 sibling price.**



**Ends Sunday 1 April (open Wed-Sun 11am to 4pm)**

**Exhibition: a hook but no fish**

First UK solo exhibition of London-based New Zealand artist, Sriwhana Spong, following the artist's research into a language invented by 12th century mystic who spent 39 years at a monastery in Germany. **Free.** Pump House Gallery, Battersea Park, SW11 [pumphousegallery.org.uk](http://pumphousegallery.org.uk)

Millennium Arena,  
Battersea Park SW11  
[enablelc.org/bpma](http://enablelc.org/bpma) or call  
8871 7537

**Mon-Thurs: 8am-6pm;  
Fri-Sat: 8am-10:30pm;  
Sun: 9am-5pm**

**Tooting Market**

Established for over 80 years as south London's premier indoor market. Stalls include fresh foods, fashion, music, hair and nail salons, arts and crafts,



furniture, a food court and hundreds of products to choose from so you'll be sure to find what you are looking for. 21-23 Tooting High Street SW17. [www.tootingmarket.com](http://www.tootingmarket.com)



**Thursday 12 May**

**Moonwalk London**

Take part in this night-time walking challenge for breast cancer charity Walk the Walk. Choose from walking a 'half moon' of 15.1 miles or a 'full moon' 26 miles. Starts and ends at Clapham Common, walking through Wandsworth. Sign up at [www.walkthewalk.org](http://www.walkthewalk.org)

**Battersea Park Zoo**

Children's Zoo, Battersea Park SW11  
[www.batterseaparkzoo.co.uk](http://www.batterseaparkzoo.co.uk)

**Friday 30 March - Easter Bunny Day**

Including making a set of rabbit ears, badge making and rabbit-themed story time.

**Friday 30 March - Monday 2 April - Easter Egg search**

How many zoo animals have got colourful Easter eggs this year? Buy a quiz sheet to work out where those eggs are.

**Tues 3 and 10 April - Chicken & Egg Days**

Includes making a chick puppet, seeing our egg display and learn some interesting egg facts, and egg and spoon races.

**Thurs 12 April - Hedgehog Day**

Join us for hedgehog themed activities: Themed arts and crafts, story time, chat with a hedgehog rescuer and meet a real hedgehog.

Usual entrance fee applies. Some of these special events have an extra charge.



**Starts March**

**London Youth Games Trials**

The London Youth Games are a Olympic style Multi Sports competition involves all 33 London Boroughs. Sports range from Basketball, Badminton, Kayaking, Cycling and more. Most of the trials take place in March and April. To be eligible to take part, the child must live or go to school in Wandsworth, and be within the specific age range. For more details visit [enablelc.org/lyg](http://enablelc.org/lyg) or email [lyg@enablelc.org](mailto:lyg@enablelc.org)

# This is my life as a foster carer

My name is Pearl and I have fostered more than 100 young people for over 40 years.

Empowering young people to achieve the best in their lives has been my focus.

I am Wandsworth's longest serving foster carer and I am proud to say that I have recently been awarded an MBE for my services to children and families!

Fostering is challenging without a doubt; some of the children I have looked after have been difficult. One needs to understand they are testing you... don't give up. It is so worthwhile when I see how well they are doing in their life achievements.

We need to understand that not all the young people want to go into higher education, some of them want to work or get a trade. Fostering is about supporting them in whatever they want to do.

Taking baby steps, being resilient and setting clear boundaries and together devising house rules all help to enforce consistency and routine.



This, with the support of your social worker, your support network and your family will help you through your journey in life as a foster carer.

## Fast track your application today!

Wandsworth is in need of more foster carers, especially those who can care for teenagers.

**We offer:** a network of fostering peers and professionals available to help and advise you, free training in fostering skills and a competitive weekly allowance fee for the child and yourself.

**You need:** a spare room and childcare experience to fast track your application.

Call us to book on an event  
on **(020) 8871 6666**  
(10am-12noon or 2pm-4pm or 6pm-8pm)

**Thursday 15 March 2018**  
**Thursday 17 May 2018**  
**Thursday 24 May 2018**

**Be there** for a child in Wandsworth... and we'll **be there** for you

 [wandsworth.gov.uk/fostering](http://wandsworth.gov.uk/fostering)  
 [carerrecruitment@wandsworth.gov.uk](mailto:carerrecruitment@wandsworth.gov.uk)  
 [wandsworthfostering](https://www.facebook.com/wandsworthfostering)





## Doing it online

Using our website helps keep your council tax bills low

### Report a waste problem

wandsworth.gov.uk/waste

### Request a housing repair

wandsworth.gov.uk/housingonline

### Search planning applications

wandsworth.gov.uk/planningregister

### Report a street problem

wandsworth.gov.uk/streets

### Apply for a school place

eadmissions.org.uk

### Book an MOT

wandsworth.gov.uk/MOT

### Report noise and nuisances

wandsworth.gov.uk/noise

### Apply or renew a parking permit

wandsworth.gov.uk/parkingpermits

### Report graffiti for removal

wandsworth.gov.uk/graffiti

### Report an abandoned vehicle

wandsworth.gov.uk/abandonedvehicles

### Tell us if you are moving in or out of Wandsworth

wandsworth.gov.uk/MIMO

### Enquire about your housing options

wandsworth.gov.uk/housingoptions

## Pay it online

It's now easier to pay online at [wandsworth.gov.uk/payments](https://www.wandsworth.gov.uk/payments)

### Pay your council tax

wandsworth.gov.uk/paycounciltax

### Pay a parking fine

wandsworth.gov.uk/parking/payment

### Pay your rent

wandsworth.gov.uk/rents

### Pay for a marriage or civil partnership ceremony

wandsworth.gov.uk/ceremonypayment

### Pay your business rates

wandsworth.gov.uk/paybusinessrates

### Pay a waste or littering penalty

wandsworth.gov.uk/waste-enforcement

## Talk to us online

### weekly e-newsletter

[wandsworth.gov.uk/enews](https://www.wandsworth.gov.uk/enews)



[facebook.com/wandsworth.council](https://facebook.com/wandsworth.council)



[twitter.com/wandbc](https://twitter.com/wandbc)



[instagram.com/wandsworth\\_council](https://instagram.com/wandsworth_council)

## My Account

Create an account and you will only have to sign in once to access the main council services.

[wandsworth.gov.uk/myaccount](https://www.wandsworth.gov.uk/myaccount)

## Report It app



**Wandsworth Report It** makes it easier for anyone to report problems like flytipping, graffiti and other environmental issues. Search for the Wandsworth Report It app on the Apple, Android or Windows app store.

## Other contacts at the council

### Adult Social Services

(020) 8871 7707

### Births, Deaths, Marriages and Voting Hotline

(020) 8871 6120

### Early Years and Childcare Hotline including Family Information Service and After School and Holiday Play Centre bookings

(020) 8871 7899

### Environmental Services including noise, pest control, private housing and licensing

(020) 8871 6127

### Finance Hotline including benefits, council tax, rents and business rates

(020) 8871 8081

### Housing Hotline including housing management and repairs, service charges, home

### ownership, homelessness and housing advice

(020) 8871 6161

### Parking and Streets Hotline including concessionary travel, blue badges, MOTs, highways and skip licensing and bay suspensions

(020) 8871 8871

### Planning and Building Control hotline including Community Infrastructure Levy (CIL), land searches and street naming and numbering

(020) 8871 7620

### Schools and Admissions

(020) 8871 7316

### Waste Hotline including rubbish, recycling and litter

(020) 8871 8558

the **MoonWalk**<sup>®</sup> london 2018

Saturday night 12th May Clapham Common

# WANTED

**ROUND UP YOUR POSSE** and join  
the **MOONWALK RODEO...**



**SIGN UP  
NOW!**

## REWARD: £6 MILLION

For vital breast cancer causes. Sign up for the MoonWalk, Volunteer or simply make a donation... Walking the Walk saves lives – be part of a healthier future!

[walkthewalk.org](http://walkthewalk.org)

Charity No SC029572



Patron HRH The Prince of Wales



**Good Housekeeping**

Official media partner of Walk the Walk