

Wandsworth schools and families

JULY 2018

Headstart

Distributed through schools across the borough



FOSTER

TER

Be there for a young person in Wandsworth

and we'll be there for you

To find out more visit wandsworth.gov.uk/fostering
or phone (020) 8871 6666 (Quote ref no: AD.1184)



**Plus
eight pages
of summer
listings
PAGE 23**

What's hot for Wandsworth families this month

Green fingered winners

Think Outside conference **PAGE 4**

Applying to a Wandsworth school

How to guide **PAGES 6-7**

History prizes

Heritage for Schools awards **PAGES 8-9**

Early years consultation

Have your say **PAGE 12**

Clean air whale ahoy!

Anti-pollution scheme **PAGES 16-17**

Free parking for WAND card holders

Help for disabled children **PAGE 22**

Summer pick 'n' mix

Holiday activities **PAGE 23**



Days out -

Summer listings **PAGES 24-30**

Dusty's Wildlife Rangers at London
Wetlands Centre, Barnes - see page 27

Send your comments and suggestions to
headstart@wandsworth.gov.uk

Follow us  [HeadstartWBC](#)



Prizes for green-fingered pupils

More than 50 delegates from Wandsworth schools attended last month's Think Outside conference to find out about outdoor learning.

Think Outside runs outdoor learning clubs in Wandsworth schools focusing on healthy living, food and wildlife. It also develops under-used or derelict sites on school premises into growing and wildlife spaces and is an experienced fund-raiser to help schools pay for them.

Swaffield School hosted the free conference which was a great success thanks to headteacher Christine Lilley and Beata Allen who runs Think Outside.

Schools that run gardening programmes had a chance to share their experiences and there was a gardening competition for primary school pupils with prizes including tools, books, seeds and VegTrug planters, plus free hours of expert advice.

The winner was Christchurch Coffe, Battersea, and the runners-up were Furzedown, Swaffield, The Roche and Alderbrook.

Visit think-outside.org.uk



Heart Beat on the move

World Heart Beat Music Academy is moving to a new venue in Nine Elms. Currently based in Southfields, the young people's musical charity's new space will be opening in 2019. It will include a fully equipped 110 seat auditorium and state-of-the-art educational, recording and broadcasting facilities.

World Heart Beat students from all backgrounds are taught, mentored and nurtured by top industry professionals and the best musicians. Since 2002, World Heart Beat has motivated over 1,000 children to learn, thrive and succeed from creating and playing music.

It is currently looking for volunteers for roles including people willing to help with reception, assist young musicians or helping with digital media or at concerts and events. It is also keen to hear from anyone will to help with fundraising.

Find out more at www.worldheartbeat.org/embassygardens



World Heart Beat students perform at Ronnie Scott's



How to apply to a Wandsworth school

Need to apply for a place for your child at a Wandsworth primary or secondary school? Here's how you do it.

Choose a school

Find out more about the schools you're interested in from the Choose a Wandsworth School brochure (available online at wandsworth.gov.uk/admissions) and read the most recent Ofsted report – you can find it online at gov.uk.

See if there are any open days coming up where you can visit the school and see if for yourself.

As well as results, think about things like pastoral care and extra-curricular activities and practical matters such as the distance from your home – if it's too far away it might be difficult for children to go to after-school clubs if they face a long journey late at night.

**Primary School
admissions deadline
15 January 2019**

**Secondary School
admissions deadline
31 October 2018**

Is your child eligible?

The school's website should contain its admission policy. Admission policies are also available at wandsworth.gov.uk/admissions. See if it requires an entrance exam or proof of religious affiliations. People living nearer get priority. Be realistic about your chances of getting your child in.

Being in the nursery class does not mean your child will automatically get a place in that school's reception. To qualify for a sibling place, the older child must still be at the school at the start of the academic year in which the younger child will start.

Apply for a place

Apply online at wandsworth.gov.uk/admissions. Wandsworth Council co-ordinates admissions for Wandsworth residents – including applications for schools in other boroughs and free schools.

You can choose six. Put them in order of priority. Be careful - putting fewer schools down will not increase your chances of getting your first choice, but it will make it more likely to get none of your choices.

Some schools require a supplementary application form - the online application system will tell you if any of your choices do.



Accept the offer or appeal

After your application is received, the council will allocate your child a place based on published admission criteria. If more than one school can offer a place, you will be offered whichever one of those schools was listed highest on your form.

You will need to accept or reject the offer. Don't reject the offer unless you've got a place lined up elsewhere. The school will contact you to make any further arrangements prior to the start of the autumn term.

If you are unhappy with your offer you can appeal. Details on how to do this are at wandsworth.gov.uk/admissions. You can also be put on a waiting list for any school you choose and check your position on the list on the admissions page.



For full details, visit www.wandsworth.gov.uk/admissions



Prizes for young historians



EXPLORING THE HISTORY OF EVENTS & PEOPLE OF WANDSWORTH BOROUGH

Alton School pupils researched their neighbourhood

Pupils at four borough schools have won cash prizes after winning the 2018 Wandsworth/GLL Heritage Awards for Schools competition.

Two schools jointly won the Key Stage 1 competition. **Granard Primary School** students explored the sports played on Putney Heath through the ages, and **Riversdale Primary School** imagined what local sights children would see if they travelled back in time. They both won £500.

The winner of the Key Stage 2 competition was **The Alton Primary School**, who looked at the history of the Alton Estate. The young historians won £1000 for their school. **Penwortham Primary School** was



highly commended for its project on how local shops have changed. **Brandlehow School** was commended in this category with their look at how the school was rebuilt after the war.

In Key Stage 3 **Burntwood School** picked up the prize with a project on the historical Ice House in the school grounds. They picked up £1000. **Putney High School** was commended with a look at Wandsworth in the time of the Putney Debates.

The winning and commended students were all given medals and plaques. The winners received their cash prizes, donated by Greenwich Leisure Limited, which runs the borough's library and heritage service on behalf of the council.



The Burntwood Ice House

The boys landed on a filthy street surrounded by horses and carriages, they could see Southfields Station but it looked different, it looked new and small and there were crowds of people wearing black suits and funny hats. They all carried Grandpa sticks!



Steam train

Business men in top hats

Riversdale's 'Time Travellers' land in old-time Southfields

Hey Wandsworth, **what's in your food?**

be food smart
change 4 life

Find out by downloading the FREE Be Food Smart app

Download on the App Store | GET IT ON Google Play | Search Change4Life

Time to Quit!

With professional help you are 4 times more likely to quit smoking for good.

Find out more about support through your GP, pharmacy and our drop-in clinics contact the **FREE Wandsworth Stop Smoking Service**

Call the 24 hour freephone on 0800 389 7921 or email: stopsmoking.team@wandsworth.gov.uk visit: www.wandsworth.gov.uk/stopsmoking



Cooking up for charity

Wandsworth Young Chef of the Year finalists helped raise more than £2,000 for charity by helping to organise and prepare the food for this year's Mayor's Gala Charity Dinner.

The annual dinner was hosted by the Mayor of Wandsworth and raised money for The Wandsworth Community Safety Trust, St. John Ambulance and the Rotary Club.

This year's Wandsworth Young Chef of the Year competition winner Rose Picicco who attends **Southfields Academy** was joined by the other finalists to show off their skills at the dinner.

They worked with former BBC Master Chef finalist Daksha Mistry to prepare and serve the food alongside students from **South Thames College** and entertainment was provided by young musicians from the council's Wandsworth Schools Music Service and by Wandsworth Young Musician of the Year Anna Brown.





Headteachers and governors of borough schools have been celebrating their success in 2017 at the annual Pupil Achievement Awards Ceremony at the town hall.

They include awards in KS1 and KS2 reading, writing and mathematics, pupil progress from KS1 to KS2 and awards at secondary level. In all 17 primaries, four secondaries and a special school won awards.

Sheringdale Primary won a special award for its progress scores from KS1 to KS2, which were in the top ten per cent nationally and **Chesterton Primary** for above average progress for disadvantaged pupils.

Harris Academy was recognised for its Progress and Attainment 8 scores and **Oak Lodge** was the special school with the highest Progress 8 score. There were also awards for high average point scores for **Ashcroft**, **Ernest Bevin** and **Chestnut Grove**.

Find out how schools performed at www.compare-school-performance.service.gov.uk



Team on top

Wandsworth are joint-top of the Jubilee Trophy standings for this year's London Youth Games going into the final few weeks. Can the team make it in the top two for the seventh year running? Well done to all involved and good luck to those yet to participate.

Comment on new approach to early years



Wandsworth parents are to be given a chance to comment on a new way of providing services for young children and their families.

The council's Thrive strategy, agreed by councillors earlier this year, looks at the whole family and focusses on preventing problems rather than just reacting to them. It aims to give young people and families the tools to make any changes they need to maximise their potential. High quality services and help and intervention are introduced at the right time, in the right place.

Services include 'stay, play and learn', which means parents and carers can access 15 hours of free childcare for their two-year-old and stay with them

while they learn, and the development of a Thrive Wandsworth Hub bringing together services for children and families.

The York Gardens and Yvonne Carr children's centres in Battersea would each provide more early years places for two-year olds, and a single team would be created to work across both centres providing other support for families such as health visitor clinics, parenting support and other help. Franciscan and Hillbrook children's centres in Tooting would be merged to provide an enhanced service at Hillbrook and targeted outreach services at Franciscan.

This summer all local parents of children aged five and under will be asked their views on how they feel services could best help them. Visit wandsworth.gov.uk/fis for details on how to comment.





Celebrating deaf identity

Students from Oak Lodge School in Balham celebrated their Deaf identities with a range of activities as part of Deaf Awareness Week.

The National Deaf Children's Society (NDCS) Roadshow Bus visited the school and held a series of workshops over a three-day period for students, their families and around 30 pupils from Holy Ghost primary school.

Families and their children had the chance to try out new technology such as vibrating alarm clocks, flashing doorbells and Bluetooth devices which are all available to borrow, free of charge, from the NDCS product loan service.

School admission changes

The council is considering changing the school admissions policy to make it easier for schools to recruit new staff.

Under the plan, the children of staff who have worked at a school for two or more years, or of staff who are recruited to a vacant post that has proved difficult to fill, will get priority. A similar scheme already operates in other boroughs and Wandsworth is keen to ensure it is able to compete to recruit the best staff.

The pressure on primary school places in the borough has eased recently, so the council believes this is the best time to introduce the scheme without it impacting local parents. Parents will be able to comment on the plans this autumn. If they go ahead, the new admission arrangement would take effect in 2020.



Girls are the elite of the street

Twenty-one talented young women from Chestnut Grove Academy in Wandsworth are celebrating their graduation from an innovative youth intervention programme, which uses the power of sport to build aspiration and self-belief.

The graduates, all local residents aged between 14 and 15, have taken part in a three month Street Elite Academy programme run by qualified sports coaches and mentors from the Change Foundation, with support from the Berkeley Foundation.

Wandsworth Council's youth service works with local schools and parents to identify promising young people who could benefit most from this intensive programme, focusing on those at risk of falling out of education or in need of fresh inspiration to get back on track.

Wandsworth Street Elite graduate, Erin, said:

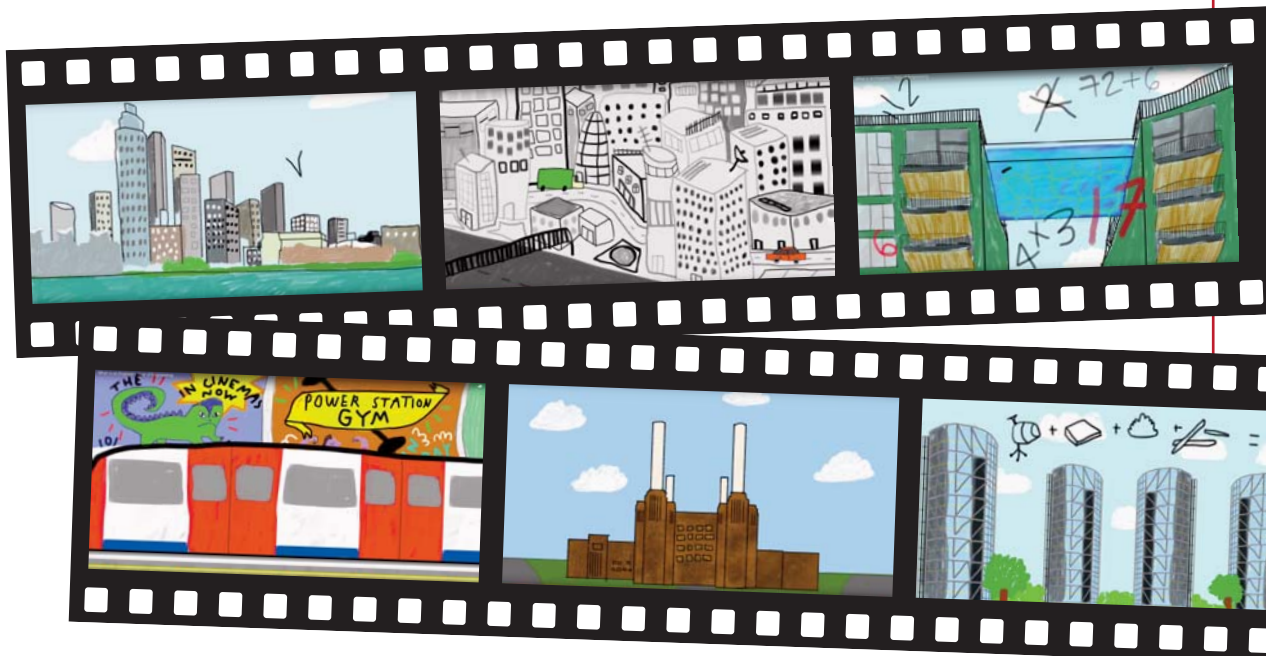
“ I feel much more confident about myself. At the beginning of the course we were asked to write a letter to ourselves that we would then read at the end. I feel that I have addressed all of the concerns I had and am really pleased with my personal development and progress. ”

Inspiring the next generation of engineers

This year is the Year of Engineering and schools in Battersea and Nine Elms are working with Chocolate Films to teach young people about engineering.

The film company has been commissioned by the Nine Elms Vauxhall Partnership to create an animation that captures the incredible feats of engineering taking place in the borough, including the replacement of the chimneys at Battersea Power Station and the extension of the Northern Line.

It will be using the animation as the basis of a workshop programme with local schools, inviting primary and secondary students to use animation to imagine what they could do if they had the power of an engineer. Keep an eye on ninemslondon.com or follow @NineElmsTeam on twitter for updates.





Clean air whale comes ashore

A 22-metre-wide life-size blue whale that helps clean up the air has been painted onto the playground wall of St George's School in Battersea.

The whale, created using a special paint that absorbs carbon dioxide, was chosen by the students themselves. They have been working with street artist Mr Dane as part of the Cultivate project, run by the council's leisure contractor Enable. This works with local schoolchildren to help them think artistically and get them ready to take advantage of creative career opportunities in the area.

Mr Dane has been working with St George's Primary School for the past two years, having first been introduced to them as part of VINCI St. Modwen's Edible Avenue programme. There have been storytelling sessions, design classes and creative workshops.



Pollution solutions

As part of this year's Clean Air Day young people from schools across the borough have been learning about what they can do to help clean up the air through special assemblies, games and theatre productions.

Parents have also been asked not to leave their engines idling while waiting to pick up their children, because it contributes to air pollution.

Email eiteam@wandsworth.gov.uk to find out how your school can get involved.

St Michael's School students try out the smoothie bike on Clean Air Day



Seeking streetfood stars

Students at five borough schools are taking part in a competition to find the next generation of street food entrepreneurs.

Burntwood Academy, Chestnut Grove Academy, Ernest Bevin College, Nightingale School and Southfields Academy are all involved in the Tooting Streetfood Challenge, run by the council's Lifelong Learning team and consultancy firm Rinova.

The schools will go head-to-head to come up with the best idea for a street food and/or drink product or business. Students will work with a business mentor to develop their ideas and attend workshops from business gurus throughout the challenge. The final will be in October where their ideas will be presented to a panel of industry judges. The winning team will get to launch their new product at Unwined in Tooting Market, also the scene of the launch of the competition last month.



Chestnut Grove students develop their streetfood idea



The launch at Unwined

Take care of your sexual health

Young people aged 15-24 remain the most at risk of contracting a Sexually Transmitted Infection.

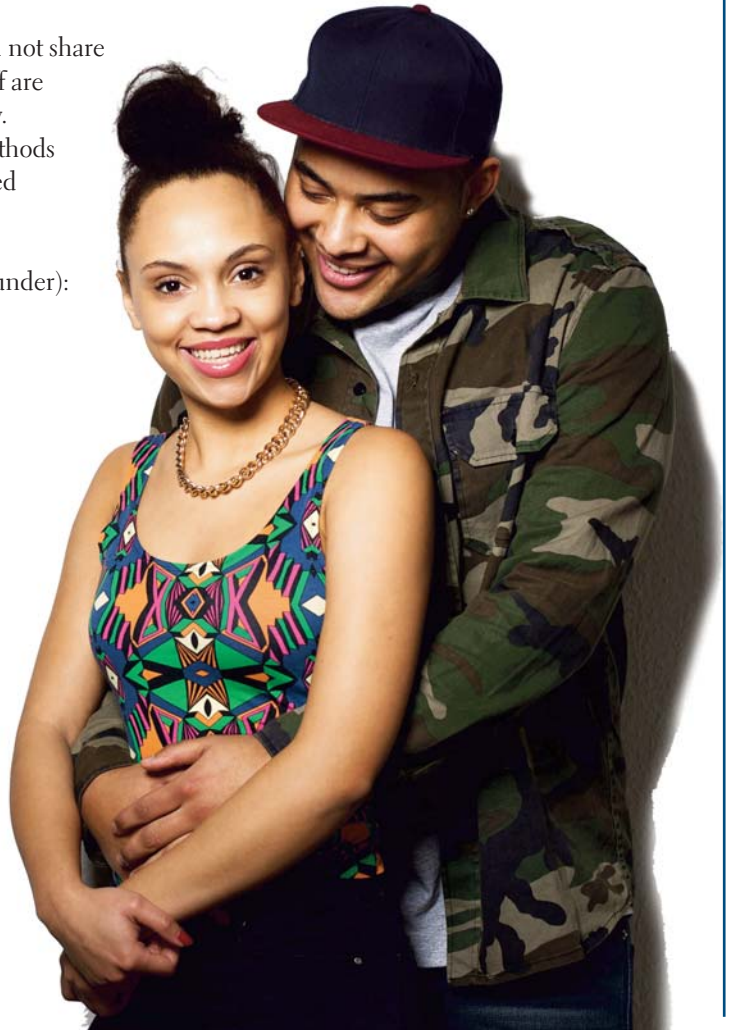
It's important to get yourself checked out if you've had unprotected sex. Many people can feel nervous or worried about attending a clinic, but the specialised walk-in clinics in Wandsworth aim to explain everything simply and make the process as stress-free as possible. In most cases they can test for infections with a urine test or a simple swab. If treatments are needed these are provided by the clinic.

All the clinics are confidential places and will not share your information with anyone else unless staff are concerned for yours or another person's safety. Clinics also offer a range of contraceptive methods and emergency contraception. An experienced professional will be able to offer advice.

Find walk-in clinics for young people (21 or under):

- **Monday 3.30pm-6pm:**
Suite 6, Queen Mary's Hospital,
Roehampton
SW15 5PN
- **Monday 3pm-6pm:**
Patrick Doody,
79 Pelham Road,
SW19 1NX
- **Wednesday 3.30pm-6pm:**
Balham Health Centre,
120-124 Bedford Hill
SW12 9HS

No appointment is needed, just walk-in
Find out more at www.shswl.nhs.uk
or call 0333 300 2100.





Garden celebrations

This year's Chelsea Fringe alternative gardening festival in Battersea and Nine Elms included a 'seed bomb dance' choreographed by local children, art workshops and an open day at the Doddington and Rollo community garden.

Chelsea Fringe coincides with the world-famous Chelsea Flower Show and shines the spotlight on community celebrations.

Visit nineelmslondon.com to find out what else is on offer for young people.



Rackets cubed



A pioneering initiative that sees primary school pupils taught free squash, tennis, maths and healthy eating in Roehampton is looking to expand across Wandsworth.

Rackets Cubed sees children from Sacred Heart, Heathmere and Alton schools attend the nearby

Roehampton Club, National Tennis Centre, and Roehampton University three days a week for free tuition in squash, tennis and table tennis, as well in healthy eating with a nutritional meal, and assistance in maths from their schoolteachers.

Inspired by an idea developed 20 years ago in the United States, the programme run by the club is thought to be the first of its kind in Britain.

Find out more at racketscubed.com



Get your **FREE** NHS Health Check from your GP.

You must be aged 40-74, have not been previously diagnosed with diabetes, kidney disease, heart disease or stroke and have not had an NHS Health Check in the last five years.

For more information call the council's public health team on (020) 8871 5026, or visit www.wandsworth.gov.uk/healthchecks



Helping you prevent
diabetes
heart disease
kidney disease
stroke & dementia



Free parking for WAND Card holders



This summer WAND Card holders can park for free in Battersea Park.

The offer runs until August 31. All you need to do is park in one of the designated car park areas and clearly display on the dashboard your WAND Card Wallet.

There's loads going on this summer in Wandsworth Park for WAND Card holders, including free hire of London Recumbents Bikes, free entry to Battersea Park Zoo, and free sessions at Go Ape and Putt in the Park.

If your son or daughter is aged 0 to 17, lives in Wandsworth, has a disability or special educational needs they may be eligible for a WAND card.

Find out more from the Family Information Service
www.wandsworth.gov.uk/localoffer 020 8871 7899
fis@wandsworth.gov.uk





 wandsworthyouthservice
 WBCYouthService
 #summerpicknmix



• Summer Pick 'n' Mix
July 23-August 17

Looking for something to do this summer? Check out the activities on offer in the Wandsworth Summer Pick 'n' Mix Activity Programme, delivered by Wandsworth Youth Service, in partnership with key partner organisations. All activities are free or heavily subsidised.

Simply Pick 'n' Mix what you'd like to do. Examples include DJ-ing, horse riding, dance, cooking, fashion design, art and music, driving theory, trips out and much more. Activities are suitable for all young people aged 11-19, or up to 25 with a disability.

Booking is essential - as some activities have limited spaces.

For a full list, further details and to book your spot visit wandsworthsummer.com

Summer listings

This is just a taste of what's going on. For lots more activities, visit the Family Information Service at www.wandsworth.gov.uk/fis

How to be listed

Send details to:

headstart@wandsworth.gov.uk

We cannot guarantee that your entry will be inserted. This is a free service. The information in this guide has been provided by the advertisers themselves. Wandsworth Council accepts no responsibility for the accuracy of the information or for any event not organised by the council.

SPORTS AND FITNESS

• **Activ Camps**

Multi-activity camp for children aged four to 14. Dodgeball, quad biking, inflatables, water slides, indoor rock climbing, swimming, foam stick hockey, obstacle courses and more.

Barn Elms: July 23-August 17

Emmanuel School: July 16 – August 10

Graveney School: July 23-August 24

La Retraite School: July 30-August 31

Trinity Fields: August 13-31

info@activcamps

activcamps.com

• **Aspire Centre**

Classes for young people including rock-climbing, trampolining and swimming

Merton Road, Southfields

aspirecentre.com

• **Athletics Camp**

Aug 7-10, 10am-1pm

Four day courses covering all athletic disciplines for children aged seven to 12.

£36.90

Battersea Park Millennium Arena

enablelc.org/bpma

• **Barn Elms Sports Centre - Summer Sports Camp**

Aug 7-11, Aug 14-18, Aug 21-25 - 10am-3pm (9am drop off available at £5 extra per day per child)

Multi sports and activities for children aged 8-14 of all abilities.

Barn Elms Sport Centre - Please call

020 3959 0055 to book.

www.enablelc.org/besc

• **Basketball Drop In**

Half Court – 6 people max £17 off peak and £34 Peak. Full Court – 12 people max £24 off peak and £48 peak

Drop in rate per person rate: £2.60 student rate £3.60 adult rate

Battersea Sports Centre, Hope Street, SW11

www.enablelc.org/bsc Phone: 020 3959 0050

• **Battersea Sports Centre Summer Holiday Fun 2018** **23 July – 17 August (5 days per week)**

Ages 3-13 yrs – please book in advance. Prices from £55 per week.

Hope Street, SW11

Phone 020 3959 0050

www.enablelc.org/bsc



• **All Star Tennis holiday camp**

Camps run for juniors aged three to teens throughout the school holidays. All levels and abilities welcome.

• Wandsworth Common

• Tooting Common

• King Georges Park, Wandsworth

• Leaders Gardens, Putney

www.allstartennis.co.uk

info@allstartennis.co.uk

020 8871 4706

• **Chelsea FC Soccer Schools**

Summer holiday soccer schools at Battersea Park and Chestnut Grove School.

Visit chelseasoccerschools.co.uk for details of dates and costs



• **The Fencing School**

Classes every Mon & Wed from 4.30 - 5.30 during term time.

Fencing for beginners aged 7-12.

£8 per session including the use of all equipment, with half price rates available for people that live on local estates.

Ethelburga Community Centre, Battersea SW11 4RA

contact@thefencingschool.com

www.thefencingschool.com



• **Battersea Summer Scheme Sport in the Park**

Run over four days in August, the scheme offers a range of sports including football, archery and tennis in Battersea Park.

For details of this year's event, including dates and costs, visit batterseasummerscheme.org.uk



• Furzedown Summer Soccer Schools

30 Jul-3 Aug, 13 Aug-17 Aug

Five-day football course for all abilities aged 6-11. All participants receive a medal when they complete the course.

£50 per child/£12 per day 10am-3pm

www.enablelc.org/frc

• Furzedown Summer Tennis Courses

23 Jul-27 Jul, 30 Jul-3 Aug

Courses are for all abilities and are based on the LTA mini tennis scheme.

4-6yr olds 10am-11am £35 per child

7-9yr olds 11am-12.30pm £52.50 per child

10-16yr olds 12.30pm-2pm £52.50 per child

www.enablelc.org/frc

• Junior Tennis

Aug 14-18

Summer holiday course for children aged 4-16 of all abilities. Call for details Furzedown Recreation Centre, Tooting 020 3959 0051

• Junior Tennis four day camp

July 24-27 - 6-8 years 10am-12pm, 9-12 years 1-3pm

Four day holiday camp covering all aspects of tennis. £59.20

Battersea Park Millennium Arena
enablelc.org/bpma

• Monday Football

7-12 yrs old 5pm-6pm

All abilities welcome

£3.50 per session

Battersea Sports Centre, Hope Street, SW11

www.enablelc.org/bsc

Phone: 020 3959 0050



• Summer rowing courses at Barn Elms Boathouse

There will be 5-day beginner and intermediate rowing courses running throughout the summer holidays for Juniors aged 12-18 years.

• Week 1: 9 - 13 July

1.30-4.30pm: Beginner & Intermediate

• Week 2: 16 - 20 July

9am - 12pm: Intermediate 1.30-4.30pm: Beginner

• Week 3: 23 - 27 July

9am - 12pm: Beginner 1.30-4.30pm: Intermediate

• Week 4: 30 July - 3 August

9am - 12pm: Intermediate 1.30-4.30pm: Beginner

• Week 5: 6 - 10 August

9am - 12pm: Beginner 1.30-4.30pm: Intermediate

• Week 6: 13 - 17 August

9am - 12pm: Intermediate 1.30-4.30pm: Beginner

• Week 7: 20 - 24 August

9am - 12pm: Beginner 1.30-4.30pm: Intermediate

£150 per rower.

enablelc.org/bebh

• Summer multi-sports camp

Aug 14-17

Four day multi sports camp for children aged seven to twelve with a variety of fun sports and games £90 (sibling price £70)

Battersea Park Millennium Arena
enablelc.org/bpma

Thursday Basketball

All abilities welcome

Minis - 5-7 yrs old 4.15pm-5pm - £3.50 per session

Juniors - 8-12 yrs old 5pm-5.55pm - £3.50 per session

Battersea Sports Centre, Hope

Street, SW11

www.enablelc.org/bsc

Phone: 020 3959 0050

• Zesh Rehman Foundation Football

These Saturday afternoon football coaching sessions are for any 5-11 year old who enjoys playing football and wants to improve their skills.

Graveney School, Welham Road, Tooting.

info@zeshrehmanfoundation.org

www.zeshrehmanfoundation.org

DAYS OUT

• Deen City Farm

Children's events, riding lessons, educational programmes and a collection of friendly animals. Open from 10am-4.30pm all year round. Closed on Mondays.

39 Windsor Avenue, South Wimbledon
(020) 8543 5300
www.deencityfarm.co.uk

• Family Saturdays at the BAC

July 28

Join the BAC on the final Saturday of every month for a day of fun, food and free activities, including face painting, music, workshops storytelling and free entry into the magical indoor play space for under 5s.

The recommended age is 0-11s and their families

Battersea Arts Centre, Lavender Hill
www.bac.org.uk

• Get Active Roehampton Sep 1

Food, family activities and music, organised by Regenerate. Free

Danebury Avenue Green, Alton Estate, Roehampton



• Foodstock LDN

July 27-29

Two days of food, drink and music.

Advance tickets £3 adult, child under 16 £2 plus booking fee

Battersea Park

www.enablelc.org/foodstock



• Battersea Park Zoo

Summer fun at the zoo, including

- July 24: Snake Day
 - July 26: Guinea Pig Day
 - July 31: Tortoise and Rabbit Day
 - Aug 3: Giant African Land Snail Day
 - Aug 7: Dumbo Rat Day
 - Aug 9: Bug Day
 - Aug 14: Butterfly Day
 - Aug 15 and 18, Cotton Top Tamarin Day (pictured)
 - Aug 21: Wildcat and Mouse Day
 - Aug 23: Bearded Dragon Lizard Day
- www.batterseaparkzoo.co.uk

• Northcote Road Summer Fete

July 15, 11am-6pm

Community events including live music, stalls, food and drink and children's entertainment There will also be a big screen showing of the Wimbledon Men's Finals

northcoteroad.london



• Luna Cinema

Cinema under the stars

- July 25, Wandsworth Park, Moulin Rouge
 - July 26, Wandsworth Park, The Shape of Water
 - Sep 18, Battersea Park, Three Billboards Outside Ebbing, Missouri
 - Sep 19, Battersea Park, Blade Runner 2049
 - Sep 20, Battersea Park, Pretty Woman
- www.thelunacinema.com

• Putt in the Park

Mini-golf in Wandsworth Park and Battersea Park. Enjoy a round of putting

and then relax in the cafe. The Battersea venue also includes a Pizzeria and Bar. Open 9am to dusk. No booking required.
www.puttinthepark.com

• Jams Owls

Meet real live owls, learn owl facts and have a close-up encounter

- Aug 3: Northcote and Battersea Libraries
 - Aug 17: Putney and Roehampton Libraries
 - Aug 24: Wandsworth Town and Earlsfield Library
- better.org.uk/library/london/wandsworth

• Vauxhall City Farm

A piece of the countryside in the heart of London. Riding lessons, young farmers club and a collection of animals. Entrance free but donations welcome. 165 Tyers Street, SE11
(020) 7582 4204
info@vauxhallcityfarm.org
www.vauxhallcityfarm.org

MUSIC AND DANCE

Summer at the Wetlands Centre

July 21 - September 2, 10am-4pm
 Dusty's Wildlife Rangers
 Become a Wildlife Ranger like Dusty Duck. There are loads of exciting activities waiting for you this summer, from pond dipping, to bird watching and scavenger hunts. Join us at the Lodge where you'll find our new Ranger Camp. Here you'll find out how to survive in the wild. Build your own shelter, learn how to start a fire or join our camp fire cooking workshop.

London Wetlands Centre, Barnes
www.wwt.org.uk/wetland-centres/london



Wimbledon Windmill Museum

Saturdays 2pm-5pm, Sundays and bank holidays 11am-5pm

Get a fascinating insight into the world of windmills and milling. The mill ceased working in 1864 and became living accommodation for six families before opening as a hands-on museum.

Windmill Road, off Parkside, Wimbledon



Zoolab

Meet the animal ranger and a selection of exotic animals. Free for 4-11 year olds but booking is essential

• **July 30:** Battersea and Battersea Park Libraries

• **Aug 24:** Tooting and Southfields Libraries

• **Aug 15:** York Gardens Library

better.org.uk/library/london/wandsworth

Battersea Community Music Group

The group runs affordable music lessons for local children, and will be expanding after receiving a grant from the Wandsworth Grant Fund. Suitable for children aged 5-11 in groups or one-to-one.

ROSE Community Clubroom, Battersea
 To find out more call 07478 218288 or email rosecmg16@gmail.com

Fiction Dance

July 23-27

Events in borough libraries. Learn through movement with music and dance inspired by favourite books. For ages 6+

better.org.uk/library/london/wandsworth

ARTS AND CRAFTS



Putney School of Art and Design Summer School

July 17-Aug 4

Creative short courses for adults and young people in the summer holidays including drawing, photography, painting and pottery

Oxford Road, Putney
 020 3959 0110
enablelc.org/psad

Summer sculpture workshop

Aug 13-15, 10am-3pm

Free three day workshops inspired by public sculpture in Nine Elms. Ideally suited to those interested in pursuing art at GCSE or above, but all those aged 14 and over are welcome.

ROSE Centre, Battersea
 020 3959 0110

email: rosie@nineelmsonthesouthbank.com to reserve your space.

HOLIDAY PLAY SCHEMES

Christ Church Primary School

Este Road, SW11 - 5 mins walk from Clapham Junction station, for children aged 3-13 years

Smallwood Primary School

Smallwood Road, SW17 - 15 mins walk from either Earlsfield or Tooting Broadway stations, for children aged 3-11 years

Prices start from £10.40 per child for a half day, £20.50 for a full day.
wandsworth.gov.uk/psbo

JUST PLAY



• Soft Play at Latchmere Leisure Centre

Two storey soft play facility for children aged up to 8 years.

Some of the features include:

- Slide
- Tiger rollers
- Spider web climbers
- Ball pond
- Bish bash bags

Children must be supervised by parents at all times whilst using the soft play area.

placesforpeopleleisure.org/centres/latchmere-leisure-centre/soft-play



• Battersea Park Playground

Exciting play equipment suitable for children over 8. Under 8s should be supervised by an adult. Free – just drop in. The playground is open the same hours as the park.

Enter through Sun Gate entrance.

• Go Ape

Treetop fun in Battersea Park

goape.co.uk

• Supercamps

July 16-August 24

Children are able to experience up to eight different activities per day to include sports, arts and crafts.

Putney High School

www.supercamps.co.uk/camps/putney-high-school

HEALTHY STUFF



• Beat It! free summer holiday camps

Beat It! is a healthy lifestyle and weight management programme for young people aged 5-13 in Wandsworth. The free camps include multisport games, obstacle courses and relays as plus learning about healthy eating through fun cooking workshops and tasting sessions. Places are subject to meeting the programme criteria, please call for further information.

- Putney Programme: 7-11 August 2018, Granard School, Cortis Road, SW15 6XA
- Battersea Programme: Sacred Heart School, dates TBC.

020 3959 0035

beatit@enablelc.org

• Talk Shop

July 25

Drop in session for parents and carers of children under 3 who have concerns about their child's speech and language development.

York Gardens Children's Centre

wandsworth.gov.uk/fis

• Free Led Walks

Walks led by trained leaders in Battersea, Tooting and Roehampton.

enable.org/walk4life/

YOUTH CLUBS

Wandsworth has seven youth centres, all open for a minimum of five days a week for 11-19 year olds (or up to 25 for young people with disabilities). Activities include sport, dance, cooking, arts and crafts, table tennis, and access to the internet.

Find your nearest centre and discover what's on offer this summer at wandsworth.gov.uk/youth

CHILDREN'S CENTRES

Children's centres across the borough will be holding special half-term activities. To find your nearest centre and download a timetable, visit www.wandsworth.gov.uk/fis

THEATRE AND BOOKS



• Double Act Until Aug 5

Meet Ruby and Garnet. They're twins, identical and inseparable – and do absolutely everything together. But their lives are about to change. Based on Jacqueline Wilson's multi award-winning book.

polkathatre.com

• Polka Theatre summer school

August 14-18

Budding actors aged 8-14 can spend a week training and working with a professional theatre director to explore a variety of drama techniques, learn new skills and create a new piece of theatre to perform for friends and family on the Polka Main Stage.

[Polka Theatre, Wimbledon
www.polkathatre.com](http://www.polkathatre.com)



• Summer Reading Challenge

This year's challenge is Mischief Makers, celebrating the 80th anniversary of the much-loved comic, Beano. Children, with the help of Dennis, Gnasher and friends, will explore a map of Beanotown to find the mysterious buried treasure.

All you have to do to take part is read six library books and visit the library regularly over the summer, collecting special stickers and incentives along the way.

To find out more, pop into your local library. Find your nearest at wandsworth.gov.uk/libraries

• The Twits

July 12-14

The Twits really are the most revolting couple you could ever have the mis-fortune to meet, but the monkeys have a cunning plan to teach those terrible twits a lesson, and they need your help! Performed by Group 64's 8-13 year olds.

Putneyartstheatre.org.uk



• Group64

G64 Theatre is a young people's theatre company based in a working theatre in Putney. It runs weekly drama and musical theatre classes for ages 4-19, holiday projects, professional master classes and opportunities to be involved in performance, directing, technical and backstage theatre. During the summer holidays we also run theatre making residential trips and have taken shows to the Edinburgh Fringe Festival.

Visit the website for more info and to book a free trial or holiday project.

[Putney Arts Theatre
www.g64.org.uk](http://www.g64.org.uk)

CHILDREN WITH DISABILITIES

• A2i Dyslexia Homework Club

Each Wednesday 5pm-6pm during term time

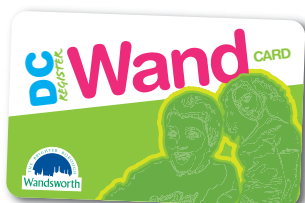
A2i (Aspire2inspire) Dyslexia is a charitable organisation based in Wandsworth focused on supporting the dyslexic community. Its after-school homework club is aimed at improving the skills of children from KS1 & KS2.

Caius House Youth Club, Holman Road, Battersea

• Short breaks holiday play centres

For children aged 3-11 who attend a Wandsworth Resource Base.

Email: eyisschildcare@wandsworth.gov.uk or visit the Local Offer website



• Discounts for WAND Card holders

WAND Card holders and children and young people with disabilities or special educational needs from Wandsworth can enjoy offers including

- Free hire of a range of modified and adapted bikes, trikes, tandems and recumbent cycles at London Recumbents in Battersea Park
- Half price swimming at Aspire Centre and free swimming at People for Places Leisure Centres
- Reduced price tickets to Battersea Arts Centre
- Free entry to Battersea Park Zoo
- Free Go Ape sessions every Tuesday mornings during the summer holidays.
- Half price Flip Out entry every Wednesday morning

www.wandsworth.gov.uk/localoffer

• DSC Community Club Tuesdays, 4.30pm-6pm, term-time only

Sport for young people aged 11 and over with any disability.

£3 or £1.50 with WAND Card.



• DCR, WAND and WAND+ Summer Picnic in Battersea Park July 25, 12noon-1pm

Bring a picnic and join other WAND members in Battersea Park for the day. Free parking and free entry to Battersea Park Zoo and Recumbent Bikes for WAND cardholders, plus the many other attractions on offer there. We will be at the Treetops Cabin in the Zoo from 12-1 to meet up with members, the DCR and WAND Team and celebrate the summer holidays.

wandsworth.gov.uk/localoffer

(020) 8021 0973

Caius House Youth Centre, Battersea
disabilitysportscoach.co.uk

• George Shearing Centre

Open for young people aged 13-25 with severe learning disabilities and complex needs. Activities include pool, drumming, football, art, computers, Wii and a sensory room.

Este Road, Clapham Junction

(020) 7228 2230

aburman@wandsworth.gov.uk

www.wandsworth.gov.uk/youth



• Lady Allen Adventure Playground

Adventurous play for children with special needs and their siblings aged 5-14. Activities include a soft play area, indoor slide, arts and crafts, swings, hammocks, a dip wire, a giant see saw, slides, tree houses and a wide range of two and three wheeled bikes

Call for more details
Chivalry Road, Battersea

(020) 7228 0278

www.kids.org.uk

See more at wandsworth.gov.uk/localoffer

How do I find out about...

Schools

General information: [wandsworth.gov.uk/schools](https://www.wandsworth.gov.uk/schools)

Admissions: [wandsworth.gov.uk/admissions](https://www.wandsworth.gov.uk/admissions)

Term dates: [wandsworth.gov.uk/termdates](https://www.wandsworth.gov.uk/termdates)

Find a school: [wandsworth.gov.uk/schoolsAtoZ](https://www.wandsworth.gov.uk/schoolsAtoZ)



Recycling

General information: [wandsworth.gov.uk/recycling](https://www.wandsworth.gov.uk/recycling)

What can I recycle?:
[wandsworth.gov.uk/recyclefromhome](https://www.wandsworth.gov.uk/recyclefromhome)



Arts, leisure and culture

Arts: [wandsworth.gov.uk/arts](https://www.wandsworth.gov.uk/arts)

Events: [wandsworth.gov.uk/events](https://www.wandsworth.gov.uk/events)

Libraries: [wandsworth.gov.uk/libraries](https://www.wandsworth.gov.uk/libraries)

Leisure centres and sport: [wandsworth.gov.uk/sport](https://www.wandsworth.gov.uk/sport)

Adult Education: [wandsworthlifelonglearning.co.uk](https://www.wandsworthlifelonglearning.co.uk)



Parks

General information: [wandsworth.gov.uk/parks](https://www.wandsworth.gov.uk/parks)

Playgrounds and trim trails A-Z:
[wandsworth.gov.uk/playgroundsAtoZ](https://www.wandsworth.gov.uk/playgroundsAtoZ)



Health, childcare and parental support

[wandsworth.gov.uk/fis](https://www.wandsworth.gov.uk/fis)





Southfields Academy

We treat every child as an individual.

“Teaching is consistently strong.”
“Your leadership has secured an orderly and welcoming school.”
“Inspectors observed high standards of behaviour in lessons and around the school.”
Ofsted, October 2017

Placed third in the borough overall in terms of student progress.
Department for Education, Compare School Performance tables

Open Events			
July		October	
Wednesday 4 th	08:45-10:15	Thursday 4 th	17:30-19:30
Thursday 12 th	08:45-10:15	Monday 8 th	08:45-10:15
September			
Wednesday 19 th	08:45-10:15	w/c Monday 8 th October	Open Week
Friday 21 st	08:45-10:15	w/c Monday 15 th October	Open Week
Friday 28 th	08:45-10:15	Open Week by appointment	

We welcome visits from prospective parents for a personal tour of the Academy.

www.southfieldsacademy.com info@southfieldsacademy.com
020 8875 2600