

# Brightside

Issue 187 March 2019

The magazine of Wandsworth Council

## NO ESCAPE FROM

West Hill

Tooting

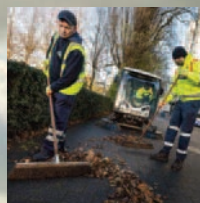
Southfields

Earlsfield

## AIRCRAFT NOISE!



Get to know  
your libraries



Taking pride  
in our  
Wandsworth







**Go  
Ape!**  
LIVE LIFE  
ADVENTUROUSLY



**HELLO  
ADVENTURE  
SEEKER**



at Battersea Park, London

Book at [goape.co.uk](https://www.goape.co.uk)

Participation and supervision ratios apply - please see our website.



# Inside

## March 2019

Cover: Heathrow High Court battle. See page 5

### Council tax still one of UK's lowest

Extra money to be spent on social care **PAGE 4**

### Fighting Heathrow expansion

The fight goes to the High Court **PAGE 5**

### Get to know your library

There's more on offer than just books **PAGES 6-7**

### Homes for Wandsworth people

The council's building a thousand new homes **PAGES 10-11**

### Fighting for private renters

New tenants' champion appointed **PAGE 12**

### Taking pride in the borough

New campaign to tackle flytipping and litter **PAGE 17**

### Early years help

What's happening at local children's centres **PAGE 21**

### Get ready for the Wandsworth Arts Fringe

Now in its tenth year **PAGE 30**

### What's On

Things to do and see from March to May **PAGES 32-33**



To obtain a copy of Brightside in large print or audio version please telephone (020) 8871 7266 or email [brightside@wandsworth.gov.uk](mailto:brightside@wandsworth.gov.uk)

#### YOUR BRIGHTSIDE

Your Brightside is distributed by London Letterbox Marketing. We expect all copies of Brightside to be delivered to every home in the borough and pushed fully through the letterbox.

It is produced by the council's corporate communications team. It is the only publication delivered to every household in the borough. We would like to thank all our advertisers for their support. Brightside will consider display advertisements from non-council bodies (excluding recruitment) and reserves the right to decline advertisements. The council neither accepts responsibility for the content of nor endorses any non-council advertisements.

• Editorial (020) 8871 8902. • Advertising (020) 8871 7266

If you have a comment about the magazine please telephone: (020) 8871 8902/6173 or email: [brightside@wandsworth.gov.uk](mailto:brightside@wandsworth.gov.uk).

Brightside is printed on environmentally friendly paper, please recycle.

# Council Tax still one of UK's lowest



Provisional council tax bills 2019-2020 Band D equivalent including GLA precept. Provisional figures subject to final approval from councils concerned and may not account for local levies.

## Wandsworth Council Tax (Band D)

For the Mayor of London  
**£320.51**



Contribution to council services  
**£449.80**

This year's Wandsworth council tax will again be one of the lowest in the UK.

It will increase by 2.99 per cent, plus a further 2 per cent targeted for social care.

This takes Wandsworth's overall average Band D council tax bill for the entire year to £770.31 – around half the London average. Of this £320.51 is payable to the Mayor of London.

“For decades we have worked hard to make sure that our residents have paid one of the lowest council taxes in London and yet benefited from record investment in roads, libraries and housing” said Councillor Guy Senior, cabinet member for Finance and Corporate Resources.

“We are also making sure we protect the vital social care services that many of our elderly residents, or those who are sick or vulnerable, rely on so heavily.”





Leaders of the five councils and representatives of the Mayor of London's office and Greenpeace on the first day of the High Court hearing

# High Court asked to quash Heathrow decision

Wandsworth, as part of a coalition of local authorities opposed to Heathrow expansion, is making the case in the High Court that the Government's Airport National Policy Statement (ANPS) backing Heathrow expansion should be quashed.

Five councils, along with the Mayor of London and Greenpeace, will say the third runway can only be built by demolishing thousands of homes and making life noisier and unhealthier for millions of people living in London and the Home Counties. Large increases in road traffic will make the capital and Home Counties pollution worse.

The coalition says that the Secretary of State ignored crucial facts when adopting the ANPS. He failed to produce an environmental report showing which communities were going to be affected by noise. Instead he published only 'indicative flightpaths' which are almost meaningless.

Cllr Ravi Govindia, Leader of Wandsworth Council, said: "The Secretary of State kept communities across south and west London in the dark about whether they would be affected by noise. If they couldn't know they might be affected they couldn't be expected to respond to the consultation."

“ The Secretary of State kept communities across south and west London in the dark about whether they would be affected by noise. ”

Cllr Ravi Govindia



#gettoknowyourlibrary

Tooting and Balham Libraries hosted a Harry Potter Workshop last month. Children and parents enjoyed a wand-making session then moved onto a magical, interactive performance from Tim the magician and a very special guest in the form of Dumbledore. At the end all students 'graduated' from the School of Witchcraft and Wizardry with a certificate.



# Get to know your library



**WANDSWORTH'S LIBRARIES AREN'T JUST ABOUT BORROWING BOOKS – THEY'RE ALSO PLACES WHERE YOU CAN LEARN A NEW SKILL, JOIN A CLUB OR EVEN DRESS UP AS HARRY POTTER!**

At a time when many councils across the country are closing libraries, Wandsworth is investing in its 11 libraries and even building new ones – including a new £3m library as part of the regeneration of Wandsworth Town.

Wandsworth is also proud to be the number one authority for London in the last year for book borrowing, with nearly 1.5 million items loaned. As well as books

there are loads of online resources, research sources, newspapers and archives.

One of the strengths of Wandsworth's libraries, run on behalf of the council by social enterprise GLL, is a comprehensive programme across all the borough libraries – big and small. These include everything from toddlers' storytimes, scrabble and reading clubs, special

themed days for children, film screenings and book signings.

We've been out and about to find out what's been going on – opposite is just a taste of some of the fun on offer.

Find out what on at your library at [better.org.uk/library/london/Wandsworth](http://better.org.uk/library/london/Wandsworth)



“

I love Balham library and I come here a lot with the girls, Juno and Elsa. It is such a lovely space and we have a Saturday routine of bringing our books back and getting new ones out. And we did Rhyme Time every single Wednesday or Thursday when Elsa was seven or eight weeks old - so I adore this library.

”

Sophie



“I love everything about my job – the books and the people.” Karen Kneller is the home delivery library assistant for the borough. Last month she helped deliver books to 161 people who find it difficult to get to their local library. She personally selects the books for each of her clients and arranges the visits – once every four weeks to pick up the old books and drop off the new.

Many parents enjoy story times for children aged two to five and baby rhyme times. Every other Saturday Balham Library hosts a group of volunteers called Play Cantonese which stages events for two-years-old and over, such as a recent Bilingual Chinese New Year Story Time. “We love the fact there are events such as this for the kids and they have the space to run around,” said Joanna who attended with husband Frisco and young son, Gabriel. “Events such as the Story Time or Rhyme Time are great for attracting families, and libraries are so important because instead of having lots of books at home you can come to the library and share.”

On Valentine’s Day, Balham Library hosted Wandsworth Libraries’ first ever Drag Queen Story Time. Organised to celebrate LGBT History Month it featured the fabulous Mama G telling stories to a packed room of children and their parents and carers.



**#gettoknowyourlibrary**

Sign up for e-news [wandsworth.gov.uk/e-news](http://wandsworth.gov.uk/e-news)



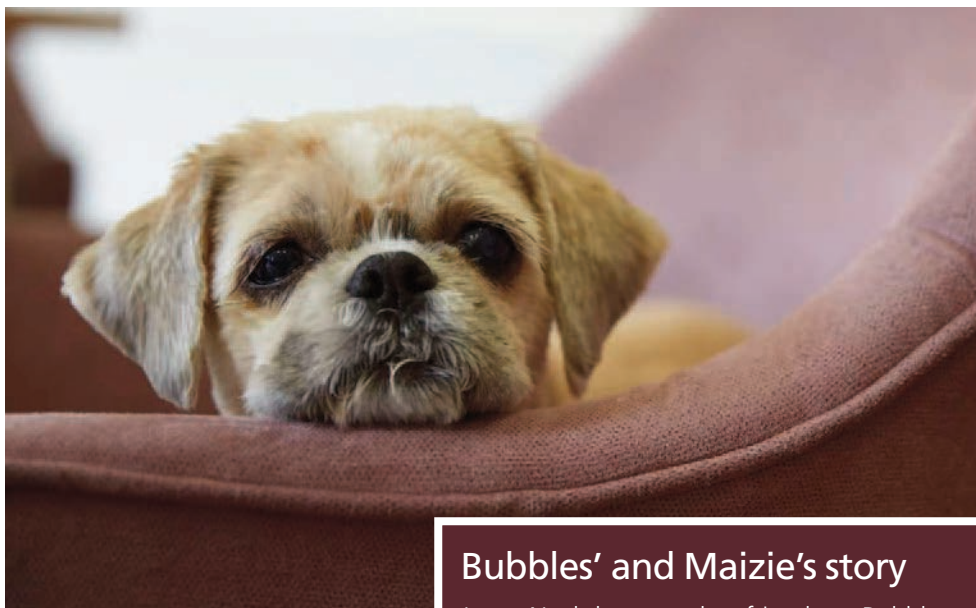
# 'Pet-friendly' Wandsworth

Wandsworth's pet-friendly housing policy has been hailed as a model for other councils by leading animal charity Battersea, formerly known as Battersea Dogs and Cats Home (BDCH).

BDCH says that only one in four local councils in London allow all their tenants to keep dogs. Some ban tenants from keeping dogs in flats, while others will only allow them to be kept in properties that have their own privately enclosed garden.

The charity highlights Wandsworth's balanced package of measures which ensures that while council tenants can enjoy the health and well-being benefits of dog ownership, there are systems in place to ensure dogs do not become a problem for other estate residents.

It hails the borough's tenancy conditions and "unique" housing estate byelaws, "enforced by a specially trained dog control unit"



which they conclude "support a more pet friendly policy". The charity also highlights the effectiveness of the council's 2009 policy of compulsory microchipping which it said was "key to enforcing responsible dog ownership".

Find out more about the work of the council's dog unit and how to contact it at [wandsworth.gov.uk/dogs](http://wandsworth.gov.uk/dogs)

## Bubbles' and Maizie's story

Joyce Neal, know to her friends as Bubbles, lives in a Wandsworth Council-owned flat with her 11-year-old Chih Tzu, Maizie. The pair live with Bubble's mother, who suffers from dementia. Bubbles says Maizie is a great source of comfort for both her and her mother:

"Maizie means the world to me and I adore her. She gets on so well with my mum and will sit with her and make her smile. Maizie really gets me through the day and having her around to sit on my bed or on my lap completely changes my mood."

## Bus battle continues

The council is battling to save the popular number 19 bus route from the axe.

The 19 bus runs from Battersea Bridge Road to Finsbury Park and is a well-used route connecting thousands of people every day from the borough to central and north London. Under proposals put forward by the Mayor of London, the route will be changed so it only runs from Finsbury Park to Holborn where it will terminate.

The council's cabinet member for transport Cllr Jonathan Cook has handed in a petition containing more than 2,200 signatures to Transport for London headquarters. The council has also produced a video showing just how important the route is, linking Battersea to the West End and north London.



Cllr Cook said: "If the bus route changes passengers will be faced with longer journey times and additional changes and waiting at bus stops, which will obviously have an impact on older people, the disabled and parents travelling with children. It is just not acceptable to taking this route away from people who really need it and cause them so much disruption."

Read more and watch the video at [wandsworth.gov.uk/19bus](http://wandsworth.gov.uk/19bus)



FREE ENTRY - FREE ADVICE - FREE TALKS

# EMPLOY WANDSWORTH 2019 VISIT THE WANDSWORTH JOBS FAIR

Friday 26 April 10am-3pm at the Civic Suite

## Receive expert advice in our inter-active employment skills workshops and our Demonstration Zone!

Join us for four different sector skills demonstrations from industry experts. Learn about the skills needed to work across Hospitality, Hair and Beauty, Floristry and Construction.

Pre book your space today in our Employment Skills Workshops. (In association with Google Digital Garage and Metro Bank)

**Build a CV** - Discover what makes a great CV, how to describe your skills and quick tips on how to make your CV shine.

**Build your personal Brand** - Learn to identify your brand, build and protect your online presence, and share content to your network.

**Business Start up/Enterprise support** - Are you interested in working for yourself? Receive advice on how to get your Business Started.

## Self Promotion Skills

**#IAmRemarkable** - Discover the importance of self promotion in the workplace and beyond.



## Visit if you are:

- Living in the borough of Wandsworth
- Currently in education or training
- Seeking employment from entry to professional level

## Why should I visit?

- Hundreds of job opportunities
- Information and advice on training and career development
- Meet employers with local vacancies



There is no parking at the Civic Suite or Town Hall. Nearest car park is Sainsburys or Southside car park off Garratt Lane.

In association with



Book your place at [www.employwandsworth.org](http://www.employwandsworth.org)

# Homes for Wandsworth people

We are building 1,000 new homes across various council sites in the borough over the next two years, giving priority to people who live or work in the borough.

The council's new Housing and Homelessness Strategy: A Housing Offer for Wandsworth People 2019-2022, sets out how we will help our residents.

The strategy follows five key themes, each of which plays an essential part in providing housing for our residents and workers. The strategy commits to investing £153m towards improving our housing stock between 2017-2022:

## Building more homes

We are committed to increasing the range of housing options available to meet the diverse needs of our residents, including social rent, low-cost home ownership and extra care housing. We will support the delivery of more than 15,800 new homes over the next five years, including 2,800 homes for local people, such as low-cost ownership and new council homes. We will build 1,000 new homes on council land prioritised for those living in the local area and aim for 60 per cent of these to be affordable rent or low-cost homeownership.

## Proud of our council housing

We will ensure that our estates are safe and enjoyable places to live with quality, energy efficient homes. We will continue a programme of fire safety works, including the recladding of Sudbury and Castlemaine. We will also carry out a review of anti-social behaviour case management and modernise CCTV on council estates. We will work with a panel of residents to review how you can get involved in your community and decisions about your housing. We will empower our residents to have their say and ensure the wider resident voice is heard.

## Better standards for private renters

We will work to ensure high standards in private housing and take firm action with landlords where required. We work proactively with owners of private high-rise blocks and the London Fire Brigade to ensure fire safety standards are met in these blocks. Our empty homes programme will encourage

owners of empty homes to return these to use and provide good quality temporary housing.

## Tackling homelessness and rough sleeping

We will work with those who are homeless or threatened with homelessness to help them find accommodation at the earliest point. Our priority will be to help people remain in their home where suitable. We will support rough sleepers off the street by working closely with local organisations and we will bid for funding from central Government to provide additional services.

## Supporting vulnerable residents

We will deliver a range of options to help more vulnerable residents, including the delivery of sheltered and supported housing schemes, as well as providing disability adaptations and telecare alarms. Our focus will be on helping residents live independently and safely in the most suitable accommodation.

“As a council we are stepping up the challenge of improving housing options and conditions in the borough. Helping residents meet their housing aspirations is at the heart of our plans. Most importantly, we are building more quality homes and creating stronger integrated communities and neighbourhoods. We will continue to prioritise the housing needs of people who live or work in the borough of Wandsworth.”

**Cllr Kim Caddy,**  
cabinet member for housing





## House Purchase Grant Scheme – Important Changes

The council's House Purchase Grant scheme for 2018 has proven to be very popular with a total of 41 tenants successfully moving into new homes or in the process of moving. To meet the increasing demands for grants, the council has made some changes.

The maximum grant level available remains at £80,000 but is subject to length of tenancy, number of bedrooms and tenants must pass a means test.

For more information about the House Purchase Grant scheme please contact a member of the Home Ownership Team at [housesales@wandsworth.gov.uk](mailto:housesales@wandsworth.gov.uk) or visit [www.wandsworth.gov.uk/homeownership](http://www.wandsworth.gov.uk/homeownership)

## 1,000 Homes Summary

This year we will deliver 170 homes in Battersea and Roehampton. Over the next three to five years we will deliver some 400 homes across Wandsworth.

Further sites have been identified for the next phase of development. For more information on our developments email: [developmentteam@wandsworth.gov.uk](mailto:developmentteam@wandsworth.gov.uk)

## Alton Regeneration – Update on Main Planning Application

The council and Redrow are working hard to finalise the proposals for the wider improvement to the Alton area which will benefit the whole community. It is expected that the planning application will be submitted after Easter, and this will be followed by a period of statutory consultation which will give residents another opportunity to comment on the application.

For more information on the Alton Regeneration email: [roehampton@wandsworth.gov.uk](mailto:roehampton@wandsworth.gov.uk)

View the new strategy at [wandsworth.gov.uk/housingstrategy](http://wandsworth.gov.uk/housingstrategy)

## Building Homes for Wandsworth People



Embassy Gardens



Alton Regeneration - Views towards St Joseph's Church with proposed village square and community building



## HELLENE'S STORY

Meet Hellene Jeffrey. Hellene has been a council tenant in the borough for many years and had lived in her ground floor flat at Sherwood Lodge for more than 25 years. Regeneration works at Sherwood Lodge meant that a lot of council tenants had to be rehoused across various sites in the borough, with Hellene being one of them.

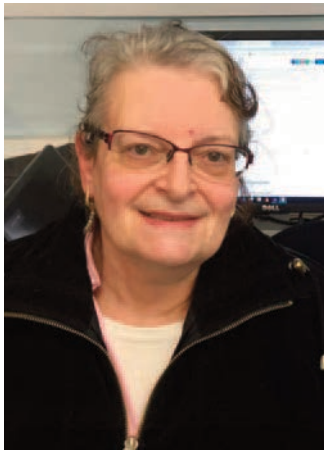
Following the news the council were able to find Hellene a home within six to eight months, in East Putney that matched her existing home at Sherwood Lodge like for like.

“It's absolutely gorgeous. I have a kitchen to die for! They helped me put my blinds up, which were made to measure and helped to do my flooring just the way I wanted it. They really went out of their way to accommodate me.

I'm so happy with this property, it's a lovely area, everyone is so well-behaved and decent, there is hardly any crime and no police.”

# Fighting for a better deal for renters

Mira Bar-Hillel was the property correspondent of the Evening Standard for more than 30 years and has a huge wealth of knowledge and expertise as one of London's most experienced housing campaigners. She is now Wandsworth Council's Tenants' Champion.



Mira said: "My personal mission is that private sector tenants in Wandsworth, including those in housing associations, have the accommodation that they are paying for and that it is safe, secure and decent.

"Private sector tenants should not be expected to live with major disruptions to their daily lives like leaky pipes, mould, broken boilers and showers, and toilets that don't flush. I can help provide advice and I can pick up the phone and crack the whip if necessary."

"I intend to roll up my sleeves and work tirelessly to resolve the problems of local people living in the private rented sector within the existing legal framework – while campaigning to improve it to their benefit."

To contact the Tenants' Champion email [tenantschampion@wandsworth.gov.uk](mailto:tenantschampion@wandsworth.gov.uk)  
You should receive a response within seven days

## COMMENT ON ASD ADVISORY SERVICES

The council wants the views of all families with children with autism spectrum disorder, or who are on the pathway for a diagnosis, about proposed changes to create a more streamlined service.

The changes are in response to previous consultations and are intended to provide more support to families throughout the process from initial identification of concerns through to support after diagnosis. This will be achieved through the creation of a multi-professional, all age advisory service that would provide support to families and education settings on a year-round basis.

For more information and to comment online visit

<https://haveyoursay.citizenspace.com/wandsworthcsd/asd-19>

Any families who would like to find out more about the proposals are invited to attend one of the following drop in sessions:

- **Friday March 22**, 10.30am-noon, The Early Years Centre, 1 Siward Road.
- **Monday March 25**, 12.30pm to 2pm – Yvonne Carr Childrens Centre, Thessaly Road
- **Saturday March 30**, 10am-11.30 at The Early Years Centre, 1 Siward Road.

## WANDSWORTH EXCHANGE

— LONDON SW18 —

Carefully crafted and well connected

A collection of 1 & 2 bedroom  
Shared Ownership homes in Wandsworth

Prices from £123,750\* for a 25% share

To find out more

[LQPRICEDIN.CO.UK/WANDSWORTH](https://lqpricedin.co.uk/wandsworth)

\*Based on a 1 bedroom home with a full market value of £462,500.  
Prices correct at time of print.



**L&Q**

BECAUSE HOMES MATTER



# Keeping Wandsworth clean and tidy

MYWANDSWORTH IS THE COUNCIL'S CAMPAIGN TO KEEP YOUR BOROUGH CLEAN AND TIDY.



Jeanette Mahoney, Enforcement Officer, investigates a fly-tip, evidence which can be used to fine litter offenders.

Nearly 250 school children across Wandsworth got stuck into a poster competition to do their bit; drawing a picture of their favourite part of the borough to celebrate what's great about where we all live. The judges certainly had a difficult choice in picking the winners, from such a strong pool of entries.

The first prize winners are printed on the centre pages and we encourage you to display them as posters in your homes to get behind the MyWandsworth campaign. You can also view the winners and runners-up online: [www.wandsworth.gov.uk/mywandsworth](http://www.wandsworth.gov.uk/mywandsworth)

To keep the borough looking at its best, the council's street cleaners, road sweepers, rubbish collectors and enforcement officers work 24/7 to make sure your neighbourhoods are clean and litter free:

- More than £4.3 million a year is spent on cleaning your streets
- Our busy town centres are cleaned up to five times-a-day
- We clean more than 400km of streets every week.

But this alone isn't enough, as an inconsiderate minority think they can get away with spoiling our borough. The council is determined to clamp down on those who behave in this way and punishing those who commit this type of environmental crime.

More than 10,800 fines were issued between April 2017 to February 2019 for fly-tipping and littering offences.

## Report fly-tip offenders

To help the council catch fly-tip offenders, you can do your bit by reporting someone when they dump rubbish.

To report someone, please give us as much information as you can,

- The circumstances, e.g. if you saw the fly-tipping, the date and time it took place and a description of any vehicles involved, plus registration number.
- Take a picture of the incident, making sure you don't put yourself or others at risk to do this.
- Location: side of the road, back alleyway, railway embankment, in a river, and whether it was on private or council land.
- The amount and type of waste, eg a few bags of rubbish, a fridge, a sofa.

Get in touch by email [flytipwitness@richmondandwandsworth.gov.uk](mailto:flytipwitness@richmondandwandsworth.gov.uk) call us **020 8871 8558** or via our Report It app which is available on iPhone, Android and Windows smartphones.





“ I wouldn't have known about the olden days if it wasn't for this club. I have enjoyed being with the people and it's been really good fun playing games with them. ”



# Bridging the generation gap

Children from Hillbrook Primary School in Tooting have been making friends with residents of the nearby Heritage Care Home.

In January the Care Home Club celebrated two years of the intergenerational scheme which sees a group of nine and ten year olds chatting to residents for an hour after school every Monday. It's proved so popular there is a waiting list of children who want to join.

Any schools or care homes who want to learn about the club so they can set up their own can phone **Rachel Manolson on 07952862064** or email **rachel.manolson@pobox.com**

“ I really enjoy the company of children because I always worked with children and now I miss them. I've made great friends with the children and have even been adopted as a Grandfather by one of them, isn't that wonderful. ”



# Pollution plummets

Wandsworth's air pollution levels fell again in 2018, new figures show.

In Putney mean levels of nitrogen dioxide (NO<sub>2</sub>) measured on the High Street kerbside monitoring station were 66 micrograms per cubic metre. In 2017 the figure was 76.

There was also a fall in the number of hours NO<sub>2</sub> levels breached EU guidelines, from 76 to 25. The fall is even starker when compared to 2016, when there were 1271 breaches. The majority of these breaches occurred during the morning rush hour. Elsewhere in the borough, levels of PM<sub>10</sub>, which is small particles of pollution carried in the air, fell across the board. The number of days that levels exceeded EU limits halved in Nine Elms (from 16 to 8) and Lavender Hill (4 to 2) and fell from 11 to three in Tooting High Street.

The fall has been attributed to the council successfully lobbying Transport for London for cleaner buses, as well as close working with the construction industry to reduce pollution from building sites. Wandsworth is also holding events outside boroughs schools to stop parents leaving engines idling. Last year Wandsworth revised its five-year Air Quality Action Plan, with a further 50 actions to reduce pollution levels, including measures to reduce pollution from council vehicles and buildings, promoting greener travel to staff and embedding air quality in all aspects of the council's work, including procurement and planning.

See what else the council is doing at [wandsworth.gov.uk/airquality](http://wandsworth.gov.uk/airquality).



Parents have been urged to switch off engines



Wandsworth Design & Print service is here to provide **you, your department or organisation** with effective, creative and cost efficient design and print.

**Get in touch, find out how we can help you.**

**t** 020 8871 7508 **e** [wdp@wandsworth.gov.uk](mailto:wdp@wandsworth.gov.uk) **w** [wandsworthdesignandprint.com](http://wandsworthdesignandprint.com)

# CUT DOWN ON THE **PLASTIC** YOU USE



A third of the food we buy is thrown away

Each home wastes £840 a year on waste food



Avoid single-use plastic

Plastic litter **KILLS** wildlife

Most plastic is reusable - so reuse it!

Plastic marine litter often starts inland

## REDUCE YOUR **FOOD** WASTE

Wasted food costs you and your Council money

Wasted food is devastating to the environment

### REDUCE

REUSE

RECYCLE

## END OF THE LINE FOR WASTE

[endofthelineforwaste.org](http://endofthelineforwaste.org)





Winners of the MyWandsworth poster competition

# Taking pride in our borough

Primary school children across Wandsworth showed their creative side in a poster competition encouraging people to take pride in the area sending a clear message that fly-tipping is unacceptable.

Nearly 250 children between the ages of 4 and 11 took part in a poster competition celebrating what's great about the local area, as part of the council's new MyWandsworth campaign, highlighting that any littering, even if it's dropping a sweet wrapper, is unacceptable.

Congratulations go to all the winners, with thanks to the pupils of Honeywell, Falconbrook, West Hill, Swaffield and Trinity St Marys schools, along with Beaver Scout group (4th Streatham), for getting stuck into the competition.

The first prize winners are printed over the next three pages; you are welcome to display them in your homes to help show your pride in the borough.

Continental Landscapes, the council's contractor responsible for keeping the boroughs streets and town centres clean and tidy, kindly donated book tokens for the first prize winners, and two runners-up in each age category.

On top of that, the schools of the winning pupils - Honeywell Infant School, Swaffield Primary School and Trinity St



Pupils at Trinity St Mary's primary school, showing their artistic streak, as they complete their competition entries.

Mary's Primary School - each received £200 to spend on an activity which helps children take pride in their local area.

The winning entries can all be viewed online at [www.wandsworth.gov.uk/mywandsworth](http://www.wandsworth.gov.uk/mywandsworth)



# #MyWandsworth

## Poster Competition



Help keep our borough  
**clean and tidy**

**Winner**  
4-6 years

**Penny Mountford**, age 6,  
Honeywell Infant School



CONTINENTAL LANDSCAPES LTD

Prizes kindly donated by  
Continental Landscapes





# #MyWandsworth

## Poster Competition



Help keep our borough  
clean and tidy

Winner  
7-9 years

Ulu Perna, age 9,  
Swaffield Primary School



CONTINENTAL LANDSCAPES LTD

Prizes kindly donated by  
Continental Landscapes



# #MyWandsworth

## Poster Competition

I'm proud of

Remember the 3 R's... Reduce - Reuse - Recycle!



Help keep our borough  
**clean and tidy**

**Winner**  
10-11 years

**Sarai Albert**, age 11,  
Trinity St Mary's CE Primary School



CONTINENTAL LANDSCAPES LTD

Prizes kindly donated by  
Continental Landscapes







## success starts with early help

Cllr Sarah McDermott, cabinet member for children's services, explains how the council will help families with young children.

### What is the Early Help Strategy?

Our new THRIVE strategy is about making sure families get the help and support they need. We know the first five years of a child's life are critical, so we'll make sure help is offered at this important time and that we're there to stop situations getting worse and turning into problems.

### How will you do that?

We want to offer a borough-wide service across all 12 of our children's centres as well as creating four THRIVE Wandsworth Hubs, all of which anyone can go to, wherever they live in the borough. Professionals from all different organisations will come together so that whole families can access a whole range of help in one place. We've consulted with local parents and we'll continue to ask for their views so that they shape services on an ongoing basis.

### Will this mean changes to children's centres?

Yes, we need to do things differently, and we can only make this happen by changing the way current services operate at four centres: Yvonne Carr, York Gardens, Franciscan and Hillbrook. But we are still 100 per cent committed to providing great services that everyone can access.

### Where will the THRIVE Hubs be?

We'll have our first hub up and running by September at the Yvonne Carr Centre in Battersea followed by a second hub in Roehampton based in the community building being developed as part of the regeneration there. We are exploring the most accessible location in Tooting and in 2023 we will have a further hub at York Gardens replacing the existing York Gardens Children's Centre and Nursery.

### Is this just about saving money?

No, it's about improving services, addressing the gaps that were identified in the consultation and providing more support for disadvantaged families, including early learning services and more free nursery care so children start school on a level playing field.

### I heard Yvonne Carr is closing

Not true. In fact, we'll be providing more there, including services for children over five, as well as under five. We're going to be working with community representatives to hold events over the summer so people can contribute their ideas on what should be available and how the Yvonne Carr Centre should operate.

### What's happening at York Gardens?

The Winstanley York Road regeneration has given us an opportunity to build a brand-new hub in Clapham Junction opening in 2023. In the meantime, York Gardens will provide childcare for two, three and four-year-olds plus additional services for children with social, emotional and mental health needs. It will continue to offer baby clinics, support from health visitors, speech and language therapists, the early years child and adolescent mental health service, parenting and group work for parents and carers, support to access education, employment and training including ESOL (language)



classes and stay and play. To achieve this on the current site we will need to make some changes to the building.

### What's happening in Tooting?

Franciscan and Hillbrook will merge to create an enhanced offer of services for young children across the two sites. A full range of early years services will be provided at Hillbrook, while Franciscan will offer targeted support for more vulnerable families with children aged up to four. Stay and Play will be available at Hillbrook as well as at ten other children's centres which anyone can use wherever they live. Tooting Library will offer Baby Rhyme Time and Story Time which both support the development of communication and language skills

### What happens now?

We'll be working with a group of parents and carers who've told us they want to stay involved and will continue to ask people for their views to help shape services offered by children's centres.

Find out more about Wandsworth's children's centres and the services they offer at [wandsworth.gov.uk/thrive](https://www.wandsworth.gov.uk/thrive)

If you live in Wandsworth and you're a parent or carer of a child under five you can help us shape the Children's Centre offer. Email Antonia Dixey at [antonia@participationpeople.com](mailto:antonia@participationpeople.com) or text her on 07921907210



Residents replant the elm trees opposite the US Embassy on Nine Elms Lane

# What's in a name? Nine Elms gets its trees back

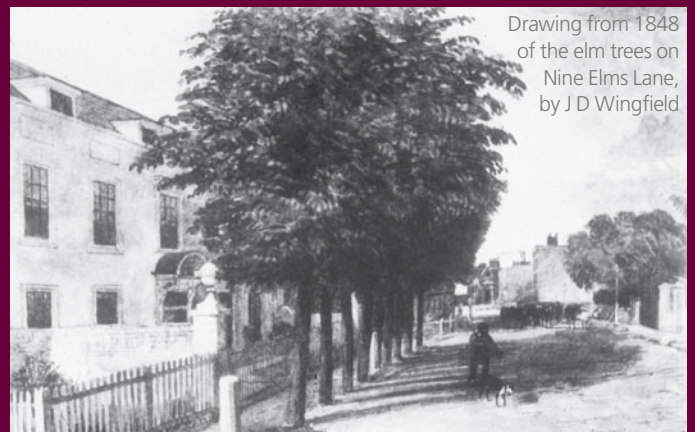
After years of only seven elms, the Nine Elms community have joined forces to re-plant the eighth and ninth elm trees next to the Battersea riverfront.

Wandsworth Council Leader Cllr Ravi Govindia, along with Cllr Steffi Sutters, cabinet member for community services and open spaces, led a team of nine local residents and businesses to plant the remaining two trees along Nine Elms Lane, opposite the US Embassy.

The Nine Elms place name has been traced back to the 17th Century and nine elm trees were known to be standing on Nine Elms Lane in the 1840s.

Although the elms are thought to have been replanted several times since then, one of the previous elm trees was blown down in a storm and the other was believed to be felled in recent years due to disease.

Cllr Govindia said: "It was a privilege to play a part in restoring the namesake of this historic part of the borough. I would like to thank the Nine Elms community for coming together to re-



Drawing from 1848 of the elm trees on Nine Elms Lane, by J D Wingfield

plant the elm trees - they included long-standing residents and established businesses as well as new residents and entrepreneurs who have recently moved into this fast-growing district."

The tree-planting starts a year of elm-related activities in Nine Elms. A piece of music called 'Nine Songs for Nine Elms', written by Lucy Cash and Fraya Thomsen, will be sung by The Battersea Power Station community choir at various venues during 2019. The lyrics were developed with residents of Nine Elms and the Doddington estate in Battersea.

Find out more about what's happening in Nine Elms at [nineelmslondon.com](http://nineelmslondon.com)



# Drive electric

New electric vehicle charging sockets are being installed in around 250 street lights across the borough.

Wandsworth's goal of becoming the best place in London to own an electric vehicle (EV) has been boosted by the signing of a contract with electronics giant Siemens to install this charging infrastructure as part of a £400,000 deal.

The Siemens equipment ties in with leading EV charging provider ubitricity which has already been tried and tested in the borough.

This will give EV owners two options in terms of connection. They can either use a ubitricity cable which also brings the customer's own electricity tariff, or they can use a standard cable, scan the QR code at the charge point with their mobile phone or tablet and charge via DirectAccess, the pay-as-you-go-option.

This latest investment is helping the council meet its target of delivering nearly 900 on-street charging points in total, including in 650 in street lights.

Current projections indicate that around 6,000 electric vehicles will be registered in the borough by 2025 – but with enhanced infrastructure and more charging points that number could rise to nearer 10,000. The council's own fleet of cars and vans is gradually being replaced by electric versions.

Visit [wandsworth.gov.uk/driveelectric](http://wandsworth.gov.uk/driveelectric)



**Matthew Paterson**, seen here with the cabinet member for environment and transport Cllr Jonathan Cook, is the first resident in Wandsworth to have lamp-post sockets in his street switched on. The computer software developer from Mandrake Road in Tooting uses a plugin-hybrid to make short journeys powered solely by an electric motor. He said having lamp-post sockets in his street was 'a game changer'.

"Having local charging points virtually on our doorsteps makes owning an EV practical for everyone who lacks off-street parking; I'm sure this new infrastructure will encourage others nearby to follow suit and 'go electric.'"

# Grant Fund now open

Applications are now being accepted for Round 11 of the Wandsworth Grant Fund.

The fund supports the work of local not-for-profit organisations, including projects to support the arts, smarten up neighbourhoods, help young people, improve people's health and encourage good citizenship and civic engagement. During 2018/19 £319,000 has been shared between a wide range of projects, including fitness, arts and environmental schemes and support for refugees, children, older people and many others.

The deadline is April 8. Find out how to apply at [wandsworth.gov.uk/wgf](http://wandsworth.gov.uk/wgf)



**Age UK Wandsworth** successfully applied for funding from round 9 of the WGF to run weekly Digipals sessions in borough libraries providing online support for older people. Raj Cumar explained how he visits the scheme at Southfields library: "My dream is to be a journalist and write a book. I love the one-to-one guidance which has really built up my confidence and every time I come here I feel inspired."

**Upcoming Digipals sessions are as follows.**  
All sessions are from 10am to 2pm:

- |                                       |                                    |
|---------------------------------------|------------------------------------|
| <b>March 26</b> - Tooting Library     | <b>May 1</b> - Wandsworth library  |
| <b>April 3</b> - Wandsworth library   | <b>May 8</b> - Southfields library |
| <b>April 10</b> - Southfields library | <b>May 15</b> - Roehampton library |
| <b>April 23</b> - Tooting library     | <b>May 21</b> - Tooting library    |
| <b>April 23</b> - Roehampton library  |                                    |

Visit [ageuk.org.uk/wandsworth/our-services/digipals/](http://ageuk.org.uk/wandsworth/our-services/digipals/)



# Site chosen for new bridge

## LOCATION RECOMMENDED FOR A NEW WALKING AND CYCLING BRIDGE ACROSS THE THAMES

Hundreds of local people took part in a consultation to choose where the bridge would cross the river. Last month councillors gave their support to the recommended location between Grosvenor Road riverbank on the north side of the Thames at Pimlico and Kirtling Street near Battersea Power Station.

The bridge will help make the rapidly growing neighbourhood

more accessible and help connect it with the rest of central London. Nine Elms will see the creation of 20,000 new homes and 25,000 jobs as well as culture and leisure opportunities, and a new bridge would be part of a package of transport improvements including two new Tube stations.

Visit [nineelmpimlicobridge.co.uk](http://nineelmpimlicobridge.co.uk)



## Railway story

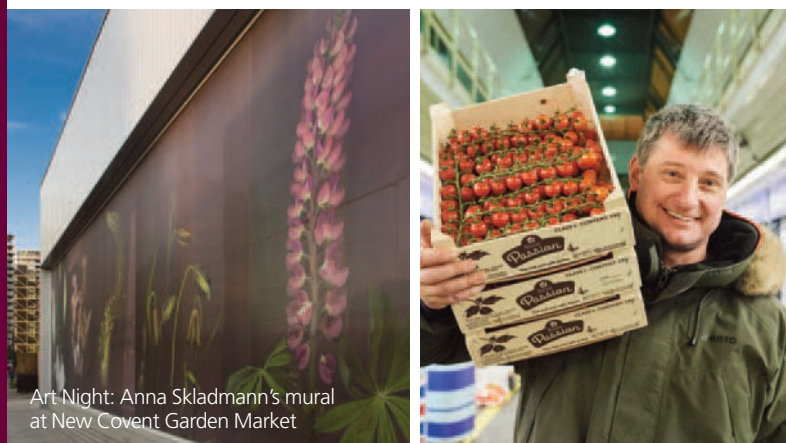
Read the untold story of thousands of 19th Century railway workers in the new book from the Wandsworth Historical Society.

In *The Staff of the London, Brighton & South Coast Railway in Battersea and Wandsworth 1856-1901* author Keith Bailey digs deep into surviving personnel records to paint a picture of their lives and careers. The picture shows Clapham Junction station master John Carne and staff in 1889. The book cost £5 plus £2 for post and packing. Send a cheque payable to Wandsworth Historical Society to WHS, 119 Heythorp Street, London SW18 5BT or email [020neil119@gmail.com](mailto:020neil119@gmail.com).



# The art of bringing people together

AS BATTERSEA RESIDENT PAM ALEXANDER STEPS DOWN AS CHAIR OF COVENT GARDEN MARKET AUTHORITY (CGMA), SHE TELLS BRIGHTSIDE HOW THE NINE ELMS AREA OF WANDSWORTH HAS CHANGED DURING THE SIX YEARS SHE SPENT AT THE HELM.



Art Night: Anna Skladmann's mural at New Covent Garden Market

"I first came to live in Battersea 45 years ago, so for four decades I had travelled past Nine Elms when much of it just seemed to be industrial wasteland behind tall fences. When I became Chair of the Market Authority I was thrilled to be part of securing the iconic and vital fresh produce market at Nine Elms, whilst creating a new neighbourhood in the heart of London. Nine Elms has already been transformed. The new Tube stations have emerged from the ground and new buildings take shape daily, including the Food Exchange, which will incubate new food-related businesses, offer professional training and provide nutrition classes for schools.

"The river path has opened and there are new facilities such as the football pitches on top of the Market's recycling plant and exhibitions at StudioRCA. A new park will form a green ribbon from Battersea Park through the new developments to Vauxhall Pleasure Gardens, the Garden History Museum and the Southbank."



New Covent Garden Market is one of the three 'anchor' icons for the area, alongside the US Embassy and Battersea Power Station. During her time at CGMA, Pam's focus has been on the challenge of helping the vibrant family of market traders, suppliers

and customers to continue with business as usual during the major re-build of their market.

She believes the Vauxhall Nine Elms Battersea Partnership, set up by Wandsworth and Lambeth councils, has been highly successful in working closely together to deliver this central London neighbourhood. "In one of the biggest redevelopment projects in Europe, the Partnership has brought together developers and masterplanners to create coherent new districts which are connected. Using best practice it has secured new infrastructure, jobs, schools, surgeries and transport links. I see it as an exemplary example of collaboration between two very different boroughs."

Part of Pam's role is to make sure the Nine Elms cultural strategy draws on the history of the area whilst delivering events to be enjoyed by the whole of London. She said: "I really treasured the work done by local women on banners for 2018's 'Processions' celebrating local suffrage heroine Charlotte Despard. And by hosting Art Night 2018 and London Festival of Architecture many visitors discovered Nine Elms for the first time. Art and culture are part of a bright future for Nine Elms, as Yinka Ilori's colourful work to transform the Thessaly Road underpass will show."

Find out more about Nine Elms at [www.nineelmslondon.com](http://www.nineelmslondon.com)



# New mental health support in Wandsworth schools

A new project aims to improve mental health for children and young people, help them become more resilient and teach them how to deal with the pressures they face in today's world.

Schools are coming together with health and social care professionals to deliver training and support for children and young people, their families and teachers.

This new way of working will initially be piloted in around nine schools. The aim is to gather evidence to demonstrate this approach can make a difference so that all schools can be included in the future.

The council is working with the Wandsworth Clinical Commissioning Group and Southfields Academy to develop the project. Team support workers who will be shared between the schools have already started their training and began visiting schools in February. They will offer one-to-one support and group-work sessions for pupils and parents.

The project has been awarded £1.85m of national 'Trailblazer' funding. Find out more at [swlondon.nhs.uk](http://swlondon.nhs.uk)

## STEP INTO ADULTHOOD

A free event will help young people with special educational needs and disabilities take their first steps into adulthood.

Get Set Go! 2019 on April 3 will offer advice on employment, training, housing, keeping fit and healthy and more. To book your place or find out more visit <http://bit.ly/2qIREqg> or email [getsetgo@wandsworth.gov.uk](mailto:getsetgo@wandsworth.gov.uk)

## VINYARD HELP

Christian church South West London Vinyard meets at Ark Putney Academy on Sundays and runs The Yard community centre at 401-403 Tildesley Road, Putney which provides a foodbank, job club, parents and toddler groups, advice services, support for the homeless in partnership with Glass Door and English language classes — all of which are free. Find out more at [swlv.org.uk](http://swlv.org.uk).



## FLIP DIP FUNDS

Tooting restaurant Dip and Flip raised almost £3,000 for St George's Hospital with a 'pay what you think' day. It included a raffle with prizes donated by The Wild Hare, Graveney Gin, Love art and Nuvola A Little Bakery. Sports students from St George's University also took part in a gravy boat race.

## ARE YOU AT RISK OF TYPE 2 DIABETES?

Every week 15 people in Wandsworth are told they have diabetes and another 25,000 are on the verge of getting it. But help is available in Wandsworth to prevent one of those people being you.

Some groups are at higher risk of Type 2 Diabetes. This includes people who are overweight, people from South Asian, African-Caribbean or Black African descent and men aged over 40. You may also be at risk if you have a family history of diabetes or have ever had high blood pressure. You can find out your risk of Type 2 Diabetes by taking a quick online test. You can either have the results emailed to you or see them on-screen. You can also get links to advice and information about local services to help you reduce your risk.

Visit your GP Practice for follow up tests if you have a moderate or high risk score. You may also be eligible for programmes such as weight management or the NHS Diabetes Prevention Programme to help prevent Type 2 Diabetes.

Take the diabetes risk test at <https://nhsdpp.diabetes.org.uk/c/wandsworth>

Find out more about the NHS Diabetes Prevention Programme at [www.preventing-diabetes.co.uk](http://www.preventing-diabetes.co.uk)





# Help shape health services

Healthwatch gives local people a voice on health and social care in Wandsworth – and is looking for people to be involved.

Healthwatch is an independent champion for people to have a chance to comment on services and help shape the way they are delivered. It runs regular public meetings at which anyone can hear updates on local services, ask questions and feed their thoughts back to service providers. It also speaks to patients at services and in the community, writes reports and attends community meetings.

Its Enter and View work involves inspecting hospital wards, care homes and other care settings, who have a legal duty to respond to and explain the decisions they make. The full response to each recommendation is posted on the Healthwatch website.

Volunteer Cherill Scott (pictured right) has a background in working and researching in the NHS and is a member of the Enter and View volunteer team. She enjoys the work and wants more local people to get involved with Healthwatch by taking part in a survey, becoming a member or taking part as a volunteer.

“It’s important that people engage

with the NHS and care services because there can be a real democratic deficit in services. There’s lots of care homes and hospitals to visit in Wandsworth, so more volunteers are always welcome.”

The public can also help Healthwatch set its priorities for the coming year by taking part in its ten minute online annual survey.

Visit [healthwatchwandsworth.co.uk](http://healthwatchwandsworth.co.uk)



# Protect yourself against shingles

Older people are reminded that they can get a free shingles vaccination at any time.

You can get the free one-time dose shingles vaccine if you are aged 70 to 73 and 78 to 79. Those aged 78 and 79 can also be vaccinated right up until their 80th birthday.

Shingles is an infection of a nerve and the skin around it. It is caused by the varicella-zoster virus, which also causes chickenpox, and usually affects a specific area on one side of the body. A painful rash progresses into itchy blisters and the condition can be extremely debilitating for some time. It is a condition that is little talked-about, and many people don’t know a vaccine is available.

You are advised to get the shingles vaccine this summer ahead of the flu vaccine season which starts in the autumn. Just call your GP practice.

Find out more at [www.nhs.uk/conditions/Shingles](http://www.nhs.uk/conditions/Shingles)

**Andrea** developed shingles in her mid-70s and it lasted for around two years. “It made me feel dreadful for ages and I’m still feeling some pain now. It just never seems to completely go away. I didn’t really know what shingles was, and I didn’t know you could get vaccinated against it. I certainly know what it is now, and I would advise all older people to consider getting the jab.”



Source: Public Health Annual Report 2016 - Diabetes in Wandsworth

Every week 15 people in Wandsworth are told they have diabetes



15,000 residents are living with the condition...



...and another 25,000 are on the verge of getting it.



TC24893 Beads (2.18)

## TYPE 2 DIABETES KNOW YOUR RISK

Finding your risk of Type 2 diabetes only takes a few minutes. It could be the most important thing you do today...

Check your risk online at  
[nhsdpp.diabetes.org.uk/c/wandsworth](http://nhsdpp.diabetes.org.uk/c/wandsworth)



Gaith



Wandsworth  
Clinical Commissioning Group



For more information call the council's public health team on (020) 8871 5026, or visit [www.wandsworth.gov.uk/healthchecks](http://www.wandsworth.gov.uk/healthchecks)

Get your **FREE** NHS Health Check from your GP.

You must be aged 40-74, have not been previously diagnosed with diabetes, kidney disease, heart disease or stroke and have not had an NHS Health Check in the last five years.

**NHS  
HEALTH  
CHECK**

Helping you prevent  
diabetes  
heart disease  
kidney disease  
stroke & dementia







---

# Dame Darcey sets the stage for new dance HQ

---

**DAME DARCEY BUSSELL HAS CUT THE RIBBON ON THE FIRST STAGE OF DEVELOPMENT FOR THE NEW GLOBAL HEADQUARTERS OF THE ROYAL ACADEMY OF DANCE (RAD) IN BATTERSEA.**

Together with Wandsworth Council leader Ravi Govindia, Dame Darcy, the RAD's president, attended the topping out ceremony at Avanton: Battersea. The new building will be completed in 2020 – the Academy's centenary.

The 60,000 sq ft building almost doubles the academy's footprint and will enable the Royal Academy of Dance to meet increasing demand for dance classes and workshops for people of all ages and abilities.

Working closely with Wandsworth Council, the Royal Academy of Dance will be delivering a cultural engagement strategy for the local community.

The picture shows: Luke Rittner, Chief Executive of the Royal Academy of Dance, Dame Darcey Busnell, Omer Weinberger, Managing Partner of Avanton, Cllr Ravi Govindia, Leader of Wandsworth Council, and dance students.

# Wandsworth Arts Fringe turns 10

TICKETS ARE ON SALE NOW FOR WANDSWORTH COUNCIL'S WANDSWORTH ARTS FRINGE (WAF), WHICH RETURNS IN MAY FOR ITS TENTH YEAR OF BOLD, BOUNDARY-TESTING ARTS AND CULTURE.

WAF will be celebrating this milestone in style, with a two-and-a-half-week-long birthday party of dance performances, cutting-edge comedy, theatrical delights, and a journey down memory lane to revisit some favourite WAF moments.

This year, dance like no one's watching in the middle of the street with Guru Dudu's silent-disco-walking-tour hybrid, be whisked away on the journey of a lifetime via RawTransportTM's unique blend of Virtual Reality technology and theatre or join Isadora Vibes in a real-life bathroom, for a one-on-one, intimate poetry performance like no other.

#WAF10 also boasts an impressive array of contemporary dance performances by some of the UK's leading dance schools, companies and artists, including Taviziva and Akeim Toussaint Buck. There's also free taster sessions, workshops and classes for all ages and abilities led by the Royal Academy of Dance and Ballet Soul.

As well as pop-up venues such as The Arches at St Mary's Church, tucked under Putney Bridge, and Fresh Ground in Battersea's transformation into a dance studio, there are mobile venues such as the Errant Stage, a big, red, travelling van bringing poetry to the streets of Wandsworth, and a series of pop-up performances of 'Don Giovanni' by Rogue Opera set to stun passers-by.

For families there's a chance to rehearse with the cast of 'Mary Poppins Returns' in a free workshop with Stars' Thursday Theatre Company at Tara Theatre, decorate skateboards at Kimber Skatepark for a community art exhibition, and learn all about the art of animation with professional filmmakers from Chocolate Films at Battersea Power Station.

**Visit [wandsworthartsfringe.com](http://wandsworthartsfringe.com) to browse the full programme of over 150 events and book your tickets**





# Wandsworth Arts Fringe events

## **Creative Wandsworth presents... WAF Schools Showcase!**

Primary schools from across Wandsworth come together for a truly spectacular and creative showcase.

**May 9, 7-9.30pm**

Wandsworth Civic Suite, Wandsworth High Street SW18 2PU

Free, booking required

## **WAF on wheels**

Catch the best local acts and talent Wandsworth has to offer whilst finding out what's happening across the whole festival. Let WAF greet you at your doorstep.

**May 4, 1-5pm**

St Mary's Church Square (Putney Wharf), SW15 1SN

**May 5, 1-5pm**

Wandsworth Park, Putney Bridge Road, SW18 1PP

**May 11, 1-5pm**

St Nicholas Church, Church Lane, SW17 9PP

**May 12, 1-5pm**

Hildreth Street, SW12 9BQ



## **WAF Big Red Poetry Tour**

Live poetry, installations and workshops coming to your estate.

**May 8, 3-8.30pm**

Open Door Community Centre, Keevil Drive, Beaumont Road, SW19 6TF

**May 9, 3-8.30pm**

Brocklebank Health Centre, 249 Garratt Lane, SW18 4DU

**May 11, 5.30-9.30pm**

St Nicholas Church, Church Lane, SW17 9PP

## **Work and Play Scrapstore - Hazelfest 2019**

Back again for its third year, this free community-based green festival

brings celebration, music, performances, arts and crafts to Hazelhurst Estate, Tooting. Everyone welcome.

**May 19, 1-4pm**

Work and Play Scrapstore, Hazelhurst Estate, 13 Blackshaw Road, SW17 0DA

## **Transition Town Tooting - Jellybrella**

All welcome to join a fun and creative workshop for adults and children, using scrap materials to create exciting sculptures.

**May 11, 10am - 4pm**

Sprout Community Arts 74 Moyser Road, SW16 6SQ

Free, no booking required

## **Chocolate Films Pop-up Media Studio Workshop**

Learn about animation from professional filmmakers and celebrate ten years of WAF.

**May 11, 10.30am - 5pm**

Battersea Power Station Circus West Village, SW11 8AB

Free, no booking required

## **Royal Academy of Dance - Delve in to Dance History**

Take guided tour of the historic Royal Academy of Dance and our role in British ballet.

**May 12, 11am - 12pm,**

**12.30 - 1.30pm**

Royal Academy of Dance 36 Battersea Square, SW11 3RA

Free, no booking required

## **F.r.e.s.h Dance Studios: Free taster sessions**

Try out a variety of new dance styles with expert teachers. Try ballet soul, salsa, expressive arts (SEN), or family style street dance.

**May 4, 11 and 18, 10am - 6pm**

Fresh Ground, 68 Battersea Rise, SW11 1EQ

Free, booking required

## **Guru Dudu**

Silent Disco Walking Tours of Wandsworth and Battersea.

As you weave through the streets of Wandsworth and Battersea, listen to commentary from your tour guide and immerse yourself in spontaneous flash mobs and dancing and singing to uplifting tunes.

**May 11, 4-4.50pm**

Wandsworth Town Station Forecourt, Old York Road, SW18 1SU

£15/£10 concessions

**May 18, 4-4.50pm**

Meet at Battersea Arts Centre, 160 Lavender Hill, SW11 5TN

£15/£10 concessions



## **Royal Academy of Dance - Get a Taste for Dance**

Try a free taster session with the Royal Academy of Dance. Choose from 'Silver Swans' beginners workshop (age 55+), 'The Gruffalo' inspired dance and storytelling workshop (2 1/2-4 years with parent/carer) and a 'Matilda' inspired dance workshop (5-7 years).

**May 15, 10.15-1.15am, 11.30am-12.15pm and 4-5pm**

York Gardens Library, Winstanley Estate, 34 Lavender Road, SW11 2UG. Free, booking required

## **ActionSpace London I am Still in Love with You**

During this live drawing event, ActionSpace artist Claudia Williams will take over Johann Arens' installation at Pump House Gallery, creating a series of unpredictable visual mash-ups from R&B, reggae and soul music titles and imagery fused with mundane objects, favourite foods and London locations.

**May 12, 11am - 4pm**

Pump House Gallery, Battersea Park, London, SW11 4NJ

Free, no booking required

## **South Thames College Takeover**

Music students from South Thames College will once again take over Wandsworth Town to showcase their talent and hard work at their Graduation Party. Expect live and recorded music and visual art from the newest local talent.

**May 8, 3-7pm**

Wandsworth Town Station Forecourt and The Alma Hotel, Old York Road, SW18 1SU

Free, no booking required

## **Stars Performing Arts Clubs - Mary Poppins Returns Workshop**

Join Stars' Thursday Theatre Company for a free workshop. Rehearse with the cast and perform at the end for family and friends. Suitable for ages 7+.

**May 16, 7-8pm**

Tara Theatre, 356 Garratt Lane, SW18 4ES

Free, no booking required

## **Kimber Skatepark The Power of Skateboard: An art form**

This skateboard project gives you the opportunity to design and decorate a blank skateboard deck using paint, stencils and printing. These creations will be displayed on site as part of an exhibition of art made by skateboarders and local residents.

**May 4 and 5, 1-5pm**

Kimber Skatepark Kimber Road, SW18 4NY

Pay what you can, no booking required



## **WildCity - Big Art Picnic**

Bring a picnic, blanket, family and friends and enjoy creating art in the great outdoors.

**May 11, 12.30-4.30pm**

Heathbrook, St Rule Street, SW8 3EL

Free, no booking required.

# what's on?

EVENTS FOR MARCH  
TO MAY 2019

Photo: © David Teit, courtesy of Royal Academy of Dance



## E33 Dance and Nine Elms Arts Ministry

Creative Soul: An arts spa

Let the arts refresh your mind and soul with a screening of dancer Rachel Riveros' moving film 'Pursue Me'; inspiring performances and classes by professional dancers' workshops in the Japanese craft of Kintsugi; and a chill out room. Treat yourself to a creative spa!

**May 5, 2-5pm**

The Village Hall, Arches Lane, Circus West, Nine Elms, SW11 8AB  
Free, booking recommended

## Until March 31

### Wandsworth Enterprise Month

Events, networking, workshops, advice and more – much of it free – to support local small and medium-sized businesses.

[wandsworthenterprisemonth.biz](http://wandsworthenterprisemonth.biz)

## Sunday April 7

### The Boat Races

Head down to Putney to watch this highlight of the sporting calendar. The women's race starts at 2.15pm and the men's race starts at 3.15pm  
[theboatrace.org](http://theboatrace.org)

## Thursday 11 April, 7.45 for 8pm

### Thames Tideway project

An update on the progress of this huge project with particular reference to works in Wandsworth.

West Side Church Hall  
(corner of Melody Road and Allfarthing Lane)

**Wheelchair accessible**

## Saturday 13 April 2pm

### 'Revolutionary Tooting' Guided Walk

Starts 2pm from King Edward VII statue outside Tooting Broadway tube station. Tooting has always been a hotbed of subversive and radical activity - from vicars to vice-girls, bodysnatchers to boy soldiers, tamil tigers to teddy boys - find out more on this entertaining and infor-

## April 8-12

### Putney School of Art and Design Easter Programme

Courses for adults and families, including drawing, painting, etching, pottery and screen-printing, plus a kids' art club. [webenrol.com/psad](http://webenrol.com/psad)



mative ramble through one of the Lonely Planet's top ten global destinations.

## Saturday April 13, 7pm

**The Putney Choral Society presents Stabat Mater by Rossini and Harmoniemesse by Haydn, with**

### professional soloists and orchestra

£15 to include free programme, glass of wine or soft drink and nibbles  
St Paul's Church, Augustus Road, SW19 6EW  
Call 07968 209245 or buy at the door  
[www.putneychoralsoc.org.uk](http://www.putneychoralsoc.org.uk)

## How to be listed

Send details (including access for people with disabilities) by April 23, 2019 to: [whatson@enablelc.org](mailto:whatson@enablelc.org)  
We cannot guarantee that your entry will be inserted.

This is a free service. The information in this guide has been provided by the advertisers themselves.

Wandsworth Council and Enable accept no responsibility for the accuracy of the information or for any event not organised by the council or Enable.





**Thursday April 11 – Saturday April 13**

**Fake News**

Journalist-turned-playwright Osman Baig's five star-rated show looks at how our media is created and how it's responding to the extraordinary times in which we live. Tara Arts, Earlsfield  
tara-arts.com/whats-on/fake-news



Easter Bunny Day

**April 6-19**

**Easter at Battersea Park Zoo**

batterseaparkzoo.co.uk

**Saturday April 6**

**Easter Egg Search**

Follow the clues to find the eggs

Keepers Association for honey-bee themed events

**Tuesday April 16**

**Eggstravaganza Day**

Arts, crafts, egg and spoon races, story time and more



Hedgehog Day

**Tuesday April 9**

**Hedgehog Day**

Hedgehog themes arts and crafts, story time and a chance to meet a real hedgehog

**Thursday April 16**

**Cocoa Day Fun**

Learn about chocolate and make a chocolate animal

**Friday April 19**

**Easter Bunny Day**

Arts, stories, badge making and make a set of rabbit ears.

**Thursday April 11**

**Honey Bee Day**

Join the London Bee

**Until Monday April 22, 11am-5pm**

**Walking Ship**

See drawings and sculptures showing the evolution of Mudskipper - a fishing boat which has been transformed by artist James Capper into an



amphibious structure that can move across water and also land onshore



**Saturday May 11**

**MoonWalk London**

Join thousands of women and men wearing decorated bras as they unite against breast cancer by taking part in the Disco themed event organised by breast cancer charity, Walk the Walk. Starting and finishing at Clapham Common and passing through the borough of Wandsworth, you can choose to walk either a Half Moon (13.1 +2 miles) or Full Moon (26.2 miles) distance.

Walkers will pass many of the iconic London landmarks including The Coca-Cola London Eye, St Paul's Cathedral, Big Ben, HMS Belfast and Buckingham Palace to name a few. Some of these locations will be showing their support by lighting up pink, keeping participants motivated to complete the challenge.

Money raised from The MoonWalk London helps to fund research into breast cancer and to improve the lives of those living with cancer now.

Sign up for The MoonWalk London at [www.walkthewalk.org](http://www.walkthewalk.org)

using two legs.

The free exhibition is open weekends only - Saturday and Sunday, plus Easter Monday.

StudioRCA, 1 Riverlight Quay, Nine Elms Lane, SW8 5AU

[nineelmslondon.com/arts-and-culture](http://nineelmslondon.com/arts-and-culture)

**Friday April 26, 8pm**

**Old London Bridge and its Houses**

A talk by Dorian Gerhold, Chairman Wandsworth Historical Society Friends' Meeting House, Wandsworth High Street, SW18 2PT

Members, free, non-members, donations welcome  
[wandsworthhistory.org.uk](http://wandsworthhistory.org.uk)

**Thursday 9 May, 7.45 for 8pm**

**Music for Minds**

Presentation with the Wigmore Hall's 'Singing with Friends' choir and a talk by the local

Alzheimer's Society. West Side Church Hall (corner of Melody Road and Allfarthing Lane)  
**Wheelchair accessible**

**May 8, 10, 11, 18 and 19, 12noon-6pm  
May 12, 10am-1pm**

**Yinka Ilori's Types of Happiness**

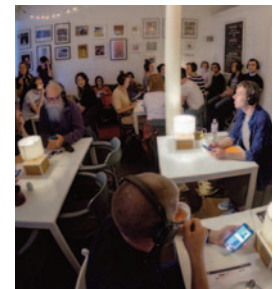
This free solo exhibition comes ahead of Yinka's first public commission, Happy Street, on Thessaly Road SW8. StudioRCA, 1 Riverlight Quay, Nine Elms, SW8 5AU  
[nineelmslondon.com/arts-and-culture](http://nineelmslondon.com/arts-and-culture)

**Saturday May 18**

**Super Swish in aid of Christian Aid**

Get a whole new wardrobe for a fraction of the cost of shopping! The entrance fee is £5 and will be donated to Christian Aid. Refreshments will be available to buy. Earlsfield Baptist Church

(Magdalen Road, London, SW18 3NZ)



**Friday May 17 to Sunday June 2, various times Tue-Sun**

**User Not Found**

It's the moment of your death and there's a magic button - do you delete your online legacy? Don't miss the full London premiere of Chris Goode's show, performed by Dante or Die. The CoffeeWorks Project, Circus West Village, Battersea Power Station, SW11 8EZ  
Information and tickets at [bac.org.uk](http://bac.org.uk)



# CAN YOU FOSTER?



**Be there** for a child in Wandsworth...  
...and we'll **be there** for you

Come to one of our events  
**Call us now on (020) 8871 6666**  
for details and to book a place



Read about our foster carers' experiences at  
[www.wandsworth.gov.uk/carers\\_experiences](http://www.wandsworth.gov.uk/carers_experiences)

To find out more:

 [wandsworth.gov.uk/fostering](http://wandsworth.gov.uk/fostering)

 [carerrecruitment@wandsworth.gov.uk](mailto:carerrecruitment@wandsworth.gov.uk)

 [wandsworthfostering](https://www.facebook.com/wandsworthfostering)





## Doing it online

Using our website helps keep your council tax bills low

### Report a waste problem

wandsworth.gov.uk/waste

### Request a housing repair

wandsworth.gov.uk/housingonline

### Search planning applications

wandsworth.gov.uk/planningregister

### Report a street problem

wandsworth.gov.uk/streets

### Apply for a school place

eadmissions.org.uk

### Book an MOT

wandsworth.gov.uk/MOT

### Report noise and nuisances

wandsworth.gov.uk/noise

### Apply or renew a parking permit

wandsworth.gov.uk/parkingpermits

### Report graffiti for removal

wandsworth.gov.uk/graffiti

### Report an abandoned vehicle

wandsworth.gov.uk/abandonedvehicles

### Tell us if you are moving in or out of Wandsworth

wandsworth.gov.uk/MIMO

### Enquire about your housing options

wandsworth.gov.uk/housingoptions

## Pay it online

It's now easier to pay online at [wandsworth.gov.uk/payments](https://www.wandsworth.gov.uk/payments)

### Pay your council tax

wandsworth.gov.uk/paycounciltax

### Pay a parking fine

wandsworth.gov.uk/parking/payment

### Pay your rent

wandsworth.gov.uk/rents

### Pay for a marriage or civil partnership ceremony

wandsworth.gov.uk/ceremonypayment

### Pay your business rates

wandsworth.gov.uk/paybusinessrates

### Pay a waste or littering penalty

wandsworth.gov.uk/waste-enforcement

## Talk to us online

### weekly e-newsletter

[wandsworth.gov.uk/enews](https://www.wandsworth.gov.uk/enews)



[facebook.com/wandsworth.council](https://facebook.com/wandsworth.council)



[twitter.com/wandbc](https://twitter.com/wandbc)



[instagram.com/wandsworth\\_council](https://instagram.com/wandsworth_council)

## My Account

Create an account and you will only have to sign in once to access the main council services.

[wandsworth.gov.uk/myaccount](https://www.wandsworth.gov.uk/myaccount)

## Report It app



**Wandsworth Report It** makes it easier for anyone to report problems like flytipping, graffiti and other environmental issues. Search for the Wandsworth Report It app on the Apple, Android or Windows app store.

## Other contacts at the council

### Adult Social Services

(020) 8871 7707

### Births, Deaths, Marriages and Voting Hotline

(020) 8871 6120

### Early Years and Childcare Hotline including Family Information Service and After School and Holiday Play Centre bookings

(020) 8871 7899

### Environmental Services including noise, pest control, private housing and licensing

(020) 8871 6127

### Finance Hotline including benefits, council tax, rents and business rates

(020) 8871 8081

### Housing Hotline including housing management and repairs, service charges, home

### ownership, homelessness and housing advice

(020) 8871 6161

### Parking and Streets Hotline including concessionary travel, blue badges, MOTs, highways and skip licensing and bay suspensions

(020) 8871 8871

### Planning and Building Control hotline including Community Infrastructure Levy (CIL), land searches and street naming and numbering

(020) 8871 7620

### Schools and Admissions

(020) 8871 7316

### Waste Hotline including rubbish, recycling and litter

(020) 8871 8558

# the MoonWalk<sup>®</sup> london 2019

Saturday night 11 May Clapham Common



Join the MoonWalk  
experience... help **put an end**  
to **breast cancer...** just  
**Walk the Walk!**



[walkthewalk.org](http://walkthewalk.org)



**walkthewalk<sup>®</sup>**  
uniting against breast cancer

Patron HRH The Prince of Wales