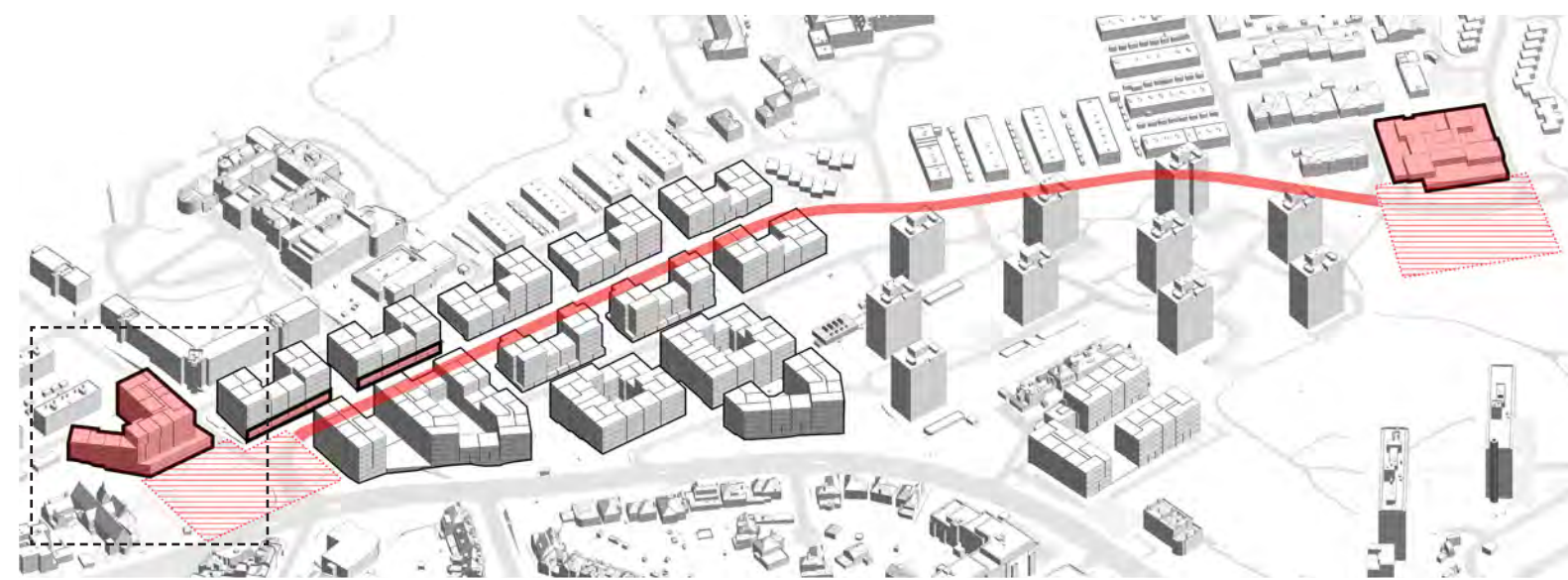


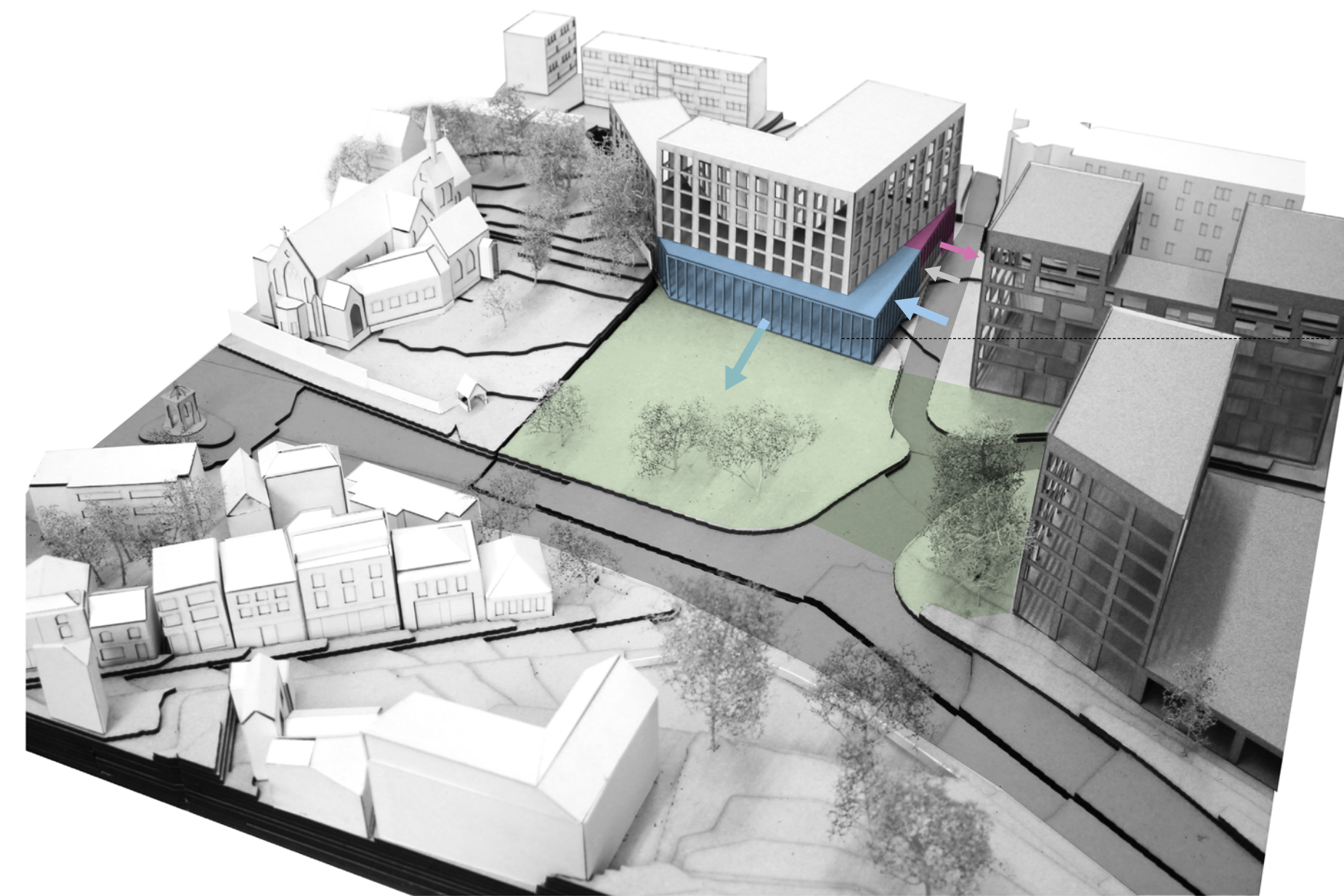
A New Roehampton Library

THE
ALTON ESTATE

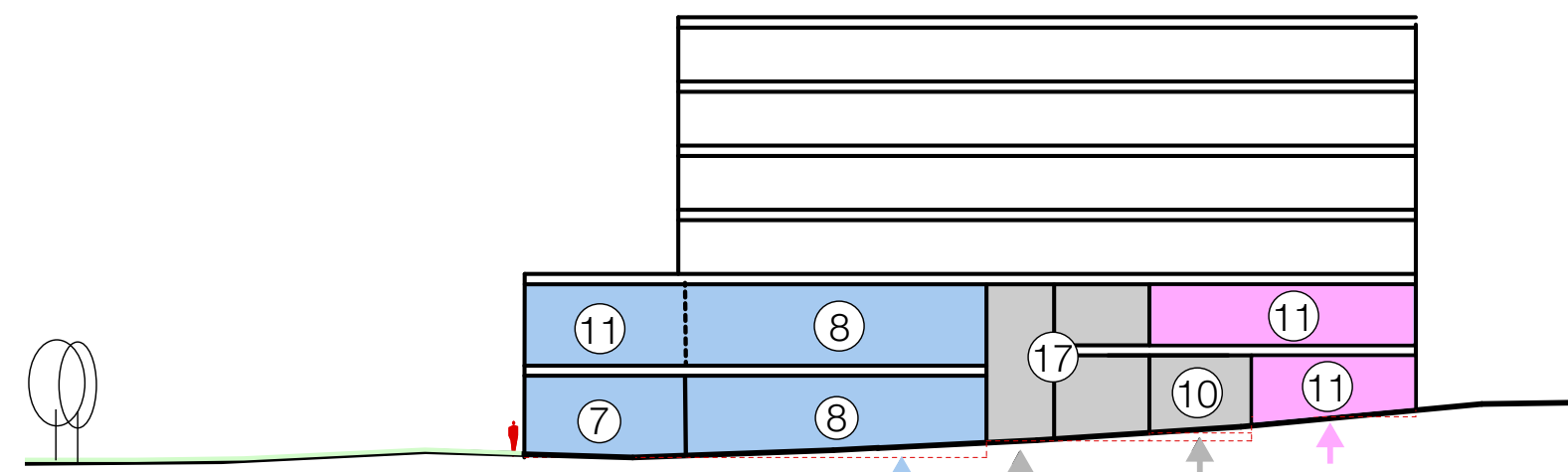
2017



Relationship of community uses within the Estate



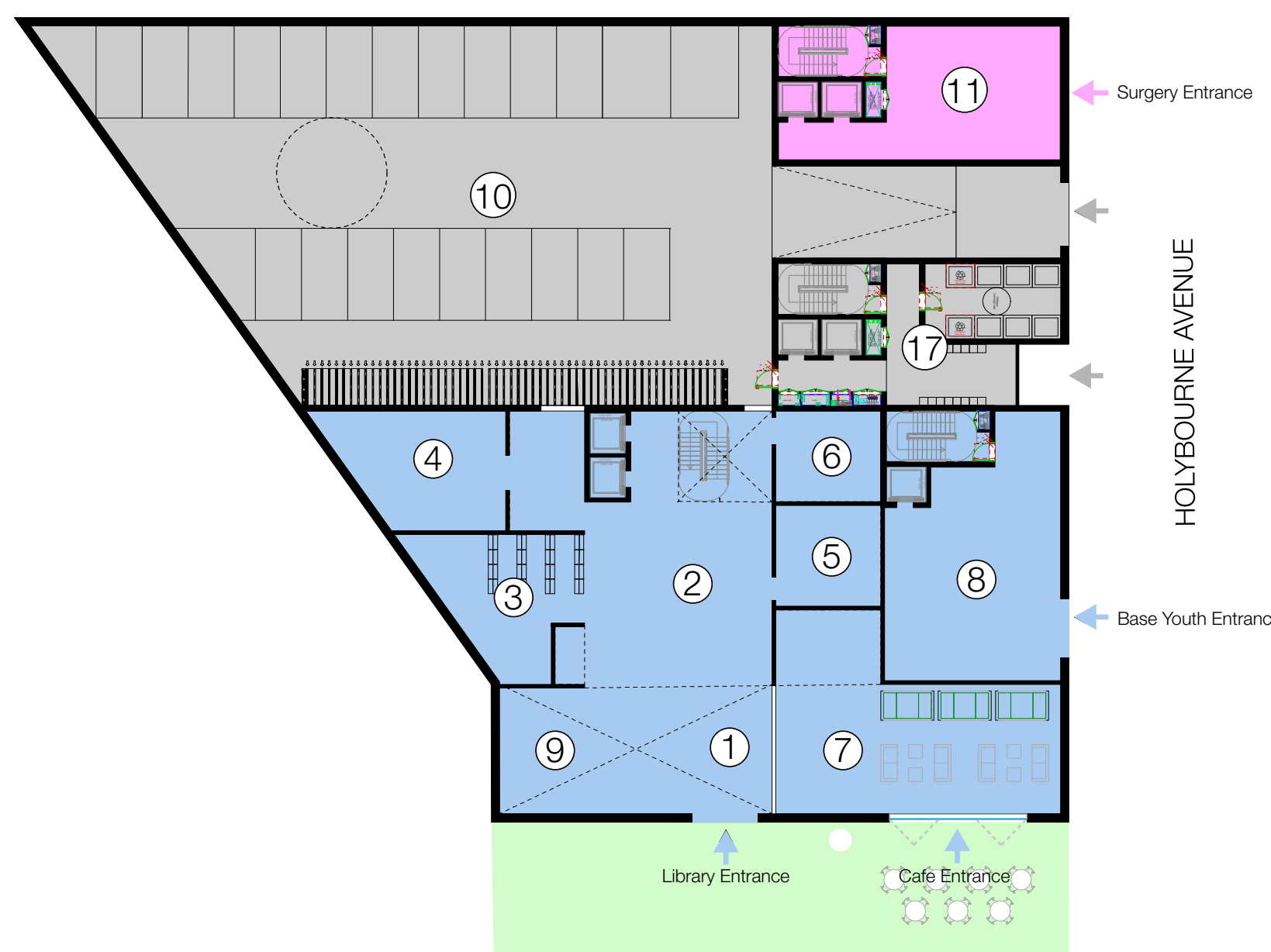
Model of new Danebury Centre and Roehampton Library (indicative)



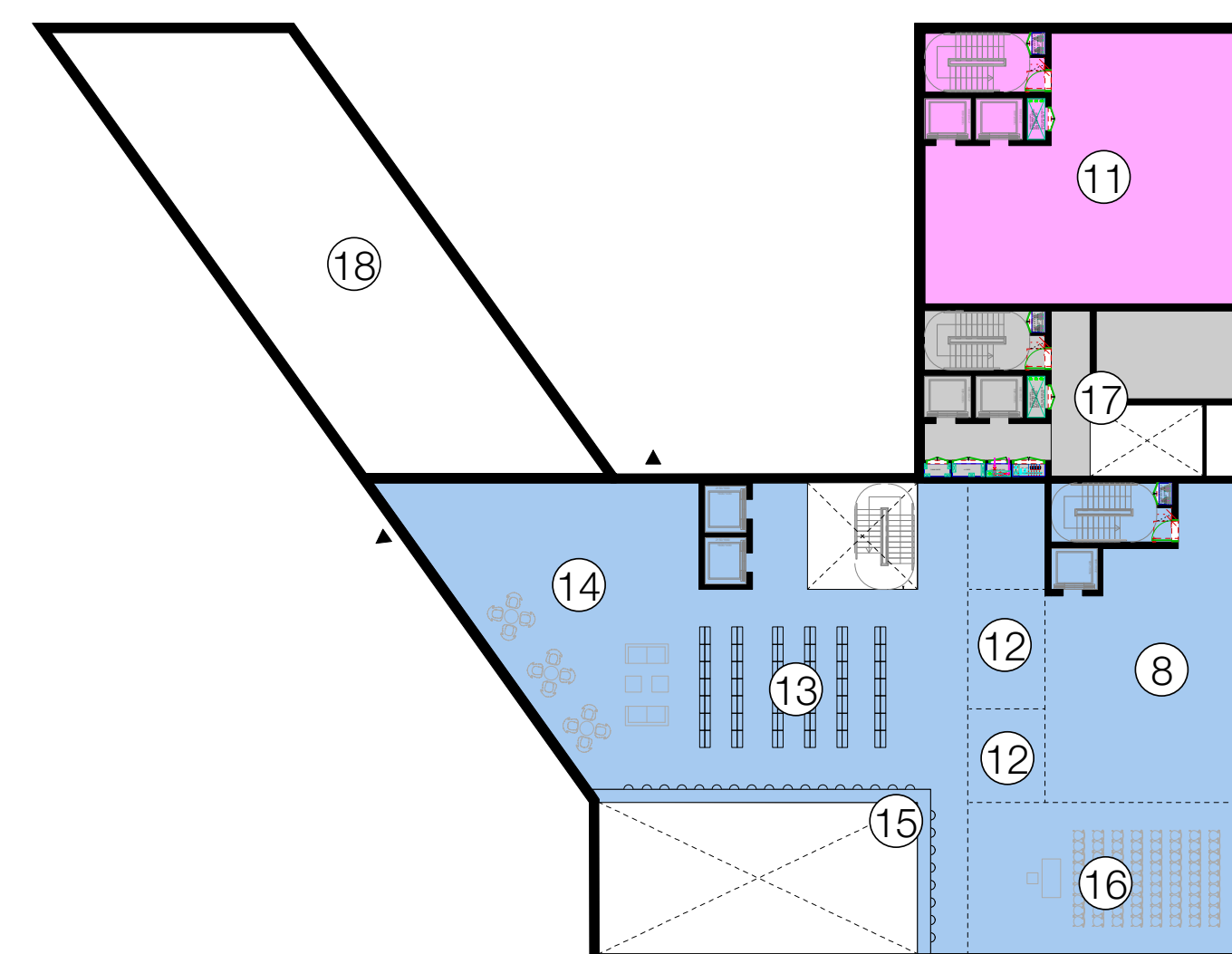
Section - Community Uses (indicative)



Aerial sketch of new Danebury Centre and Roehampton Library (indicative)



Ground Floor Plan - Community Uses (indicative)



First Floor Plan - Community Uses (indicative)

- Library / Youth Services
- Doctors Surgery

1. Entrance Lobby
2. Reception
3. Childrens Library
4. Staff Areas
5. WC's
6. Plant
7. Cafe/Kitchen
8. Base Youth Centre
9. Exhibition
10. Car Park
11. Danebury Surgery
12. Meeting/Teaching Rooms
13. Library
14. IT
15. Study Areas
16. Meeting Hall
17. Circulation (Res)
18. Resi

Overall Areas
 Base Youth = 300sqm
 Surgery = 300sqm
 Library = 1365sqm

Key Library Areas
 Cafe = 132 sqm
 Childrens Library = 50sqm
 Main Library = 100sqm

Portswood Place Community Buildings

THE
ALTON ESTATE

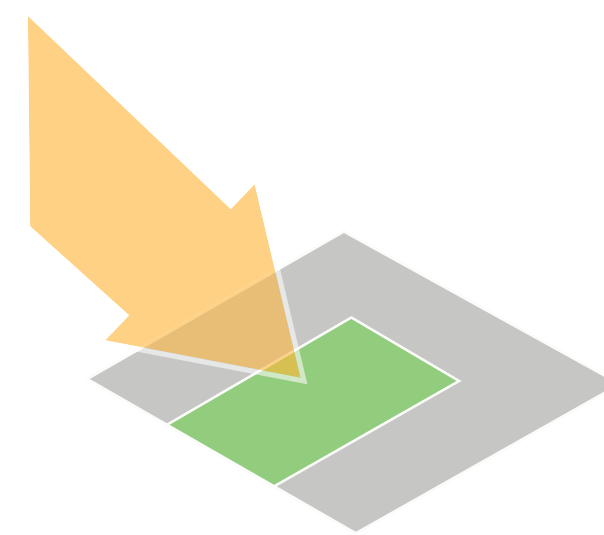
2017



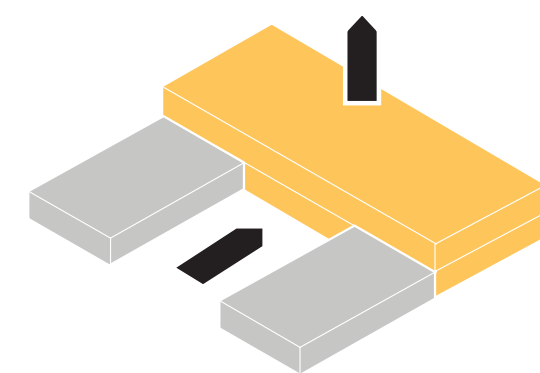
View south from Downshire Fields



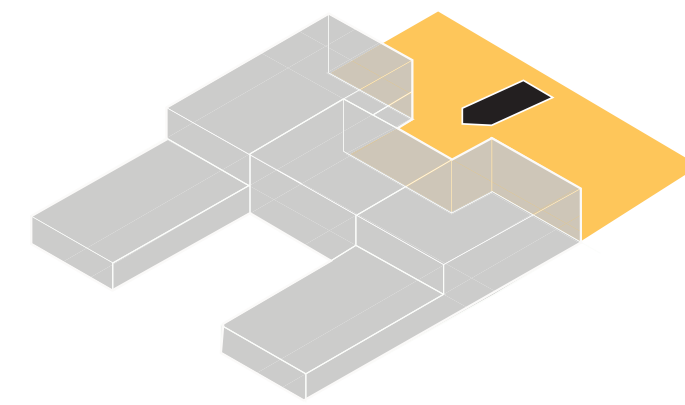
Proposed Eastwood Nursery building from Downshire Field (indicative)



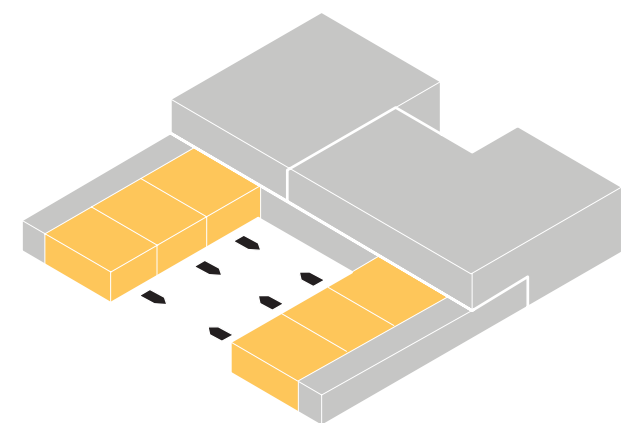
01. Create south facing courtyard



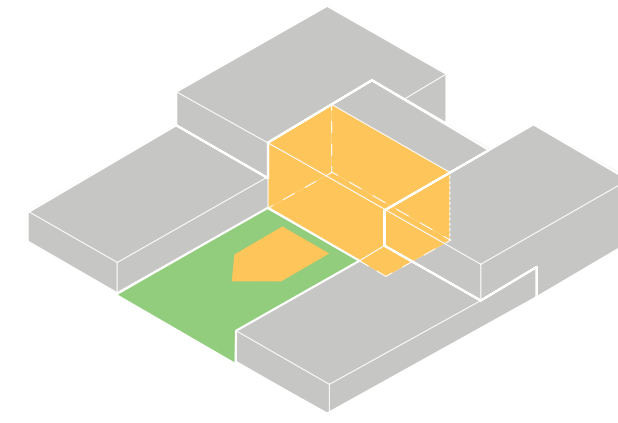
02. Extrude to two storeys at front, one storey at rear



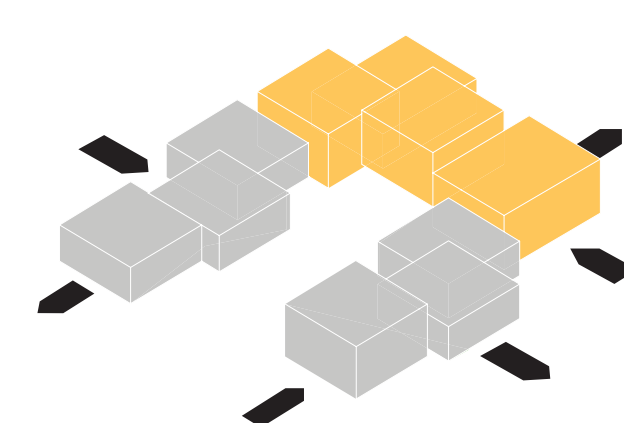
03. Indent front to create main entrance



04. Wrap courtyard playspace with important uses (classrooms)



05. Wrap courtyard playspace with important uses (dining hall)



06. Articulate form

Design Principles



- 01. Eastwood Nursery
- 02. Eastwood Children's Centre
- 03. Danebury Health Centre
- 04. Club Room
- 05. Retail Units