

team Roehampton

February 2015

Alton Area Masterplan - the next steps

Council leader Ravi Govindia explains the next steps in the regeneration of Roehampton:



“ Now the Alton area masterplan is agreed we need to turn it into official planning guidance called a ‘Supplementary Planning Document’ (SPD). This will ensure the proposals drawn up with local people have real weight and will shape how the Alton changes and improves in the coming years.

“A consultation on the draft SPD, focusing on land use and development guidelines, will run from April 6 until May 24 this year to give local people and stakeholders a chance to have their say. During this period the draft document will be available for inspection at Roehampton Library as well as online.

“The council has also started the search for a development partner to help us put

the regeneration masterplan into action. This is a competitive selection process and will ensure we get a contractor with the skills and experience needed to deliver such an ambitious and sensitive project. We hope to announce the chosen development partner by summer 2016.

“As you can see there are still some hurdles to clear before we can start to improve the estate and we will keep you up-to-date on our progress in the weeks ahead. If you have any questions about the regeneration of the Alton area then please get in touch with the project team who will be happy to explain more.”

Ravi Govindia
Leader of Wandsworth Council.



To view the Final Masterplan in detail visit www.wandsworth.gov.uk/roehampton or call in to Roehampton Library.

To find out more contact the project team. Phone: (020) 8871 6207 Email: roehampton@wandsworth.gov.uk

Looking for work? **Work Match** can help

Wandsworth Council's Work Match recruitment team is here to help you find a new job or to get into training.

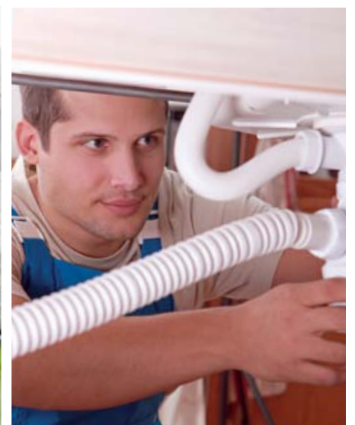
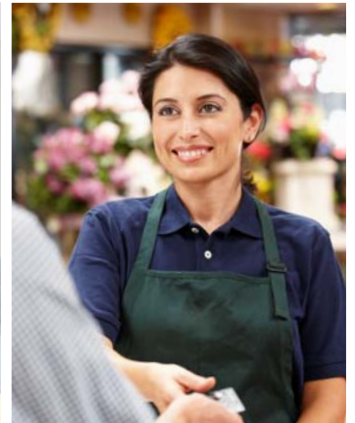
They have a wide range of live vacancies to fill and they only put forward candidates who live here in Wandsworth.

From shop assistants and apprentice plumbers, to engineering graduates and football coaches, they have a constant stream of new opportunities to share with you.

Visit www.wandsworthworkmatch.org to see the latest vacancies or call (020) 8871 5191.

Work Match is part of the Wandsworth Jobs Package. This is a unique set of employment support services for local residents.

Find out more at www.wandsworth.gov.uk/jobzone



Work Match



Jobs for the Girls is a one day career exploration event which is being held in Wandsworth's Civic Suite on Friday 6 March.

The exhibition aims to increase women's awareness of career opportunities in sectors where females are currently under-represented such as construction, finance, banking, science, technology, aviation, the emergency services and armed forces. It takes place in the run up to International Women's Day 2015.

Attendees will have the opportunity to talk to recruiters and take part in a range of interactive workshops and other activities designed to motivate and inspire Wandsworth's female students and job seekers from all backgrounds to be confident pursuing opportunities in these fields.

**Wandsworth Civic Suite, Wandsworth High Street, SW18 2PU
12:00noon to 3:00pm Friday 6 March**

Book your place at:

www.wandsworthworkmatch.org/jobs-for-the-girls-conference

Sponsored by Lend Lease and Skanska

Jobs for the Girls

CAREERS CONFERENCE **6 March 2015**





Up to £60k towards a home of your own

Wandsworth Council is offering qualifying council tenants a grant of up to £60,000 to help them buy a home of their own.

The money can be used as a deposit to help secure a mortgage. The new property can be anywhere in Europe.

The scheme helps tenants into home ownership and frees up council properties so they can be given to other local families.

It also saves taxpayers' money as it helps to get households out of expensive temporary accommodation.

To find out more about this and other homeownership options email housesales@wandsworth.gov.uk or call (020) 8871 6016.

Congestion relief plan for Roehampton Lane

Transport for London is consulting local people on proposed changes to the southern end of Roehampton Lane, between the junction with Roehampton High Street and Clarence Lane.

The plans include widening a section of the northbound carriageway to two lanes and removing four parking spaces between Beech Road Close and South Thames College.

The scheme is designed to reduce traffic congestion and Transport for London's consultation will run until March 16.

For more information and to have your say visit www.tfl.gov.uk/consultations and search for 'Roehampton Lane'.

Money advice for council tenants

Meet Helen from the council's Financial Inclusion Team.

She is helping council tenants to manage their money more effectively and to keep up with their rent.

Helen and the team can advise you on how to find a better deal on your utility bills, get out of debt and will ensure you are claiming all of the benefits you are entitled to. They're a friendly team and all advice is strictly confidential.

To get in touch call (020) 8871 8987 or email financialinclusion@wandsworth.gov.uk



Wandsworth Plus Credit Union

CREDIT UNION

- Affordable Interest Rates
- Apply Online or in branch
- Free Life Insurance*
- Protecting your money
find out more here

A different way to save or borrow

If you want to start saving money or to take out a loan, Wandsworth Plus Credit Union could help.

We are a not-for-profit organisation with fair interest rates and we don't just rely on credit scores to decide whether or not you can borrow.

To find out more call (020) 7471 2620, email info@londonpluscu.co.uk or visit www.wandsworthpluscu.co.uk

a healthier roehampton

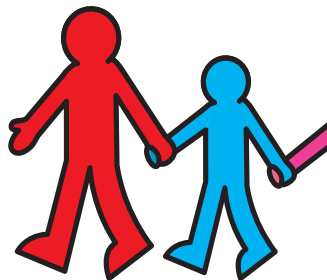
There are lots of local projects to help you improve your health.



Stop smoking clinic

Anyone can just drop-in for advice and support on how to get free from smoking. Come to Asda Roehampton, Roehampton Vale, every Saturday from noon to 5pm. Sessions run until March 7. Call 0800 389 7921

Walk yourself fit



Would you like to join a walk led by a trained walk leader who can advise and guide you towards building up your physical activity at a pace that suits you? The walks take place the first Sunday of the month at 10.30am and last for around one hour. Meet outside the petrol station on Roehampton Lane.

Call the Wandsworth walks coordinator on (020) 8871 6373 or visit www.wandsworth.gov.uk/walk4life

Check out Alton Activity Centre



Youngsters aged five to 13 years old can join the fun at the Alton Activity Centre on Ellisfield Drive.

There lots of exiting activities to choose from. Children need to be registered before they can take part.

Call (020) 8780 3155 to find out more or email spurgeons@wandsworth.gov.uk

Sign up for free slimming clubs

Local people who need to lose a bit of weight can get vouchers for 12 weeks worth of Weight Watchers or Slimming World membership.

The groups combine advice and support on healthy eating, physical activity and motivation. Classes are held at local venues.

You can sign up for the courses if you are over a certain Body Mass Index (BMI).

To find out more call (020) 8871 5017 or email health@wandsworth.gov.uk



Affordable fitness

There are lots of affordable fitness and activity classes taking place across Roehampton.

Your first session is free and then each class after that will cost between £2 and £4 depending on the activity.

You can try Pilates, kickboxing, get fit keep fit, Zumba as well as fitness sessions designed specifically for people in their fifties and sixties.

Call (020) 8871 6373, email activelifestyles@wandsworth.gov.uk or visit www.wandsworth.gov.uk/activelifestyles

The general election is on 7 May 2015

TO VOTE IN THE GENERAL ELECTION YOU MUST BE ON THE ELECTORAL REGISTER

You can apply to register online at www.gov.uk/register-to-vote This is the easiest and most efficient way of registering.

If you cannot register online please contact Electoral Services on 020 8871 6023 and we will send you a paper registration form.

**Registration Deadline –
By midnight, Monday 20 April 2015.**

**YOUR VOTE MATTERS
MAKE SURE YOU'RE IN**

