

ALTON

ROEHAMPTON SW15

ALTON NEWS

Summer 2023

Issue 35

www.AltonEstateRegen.co.uk

Twitter: @AltonMasterplan

www.wandsworth.gov.uk/Roehampton

**REGENERATION OPTIONS
REVIEW - UPDATE**

**COMMUNITY HEALTH
CHAMPIONS**

**MEANWHILE USE
ON THE ALTON ESTATE**

URBAN SQUIRRELS!



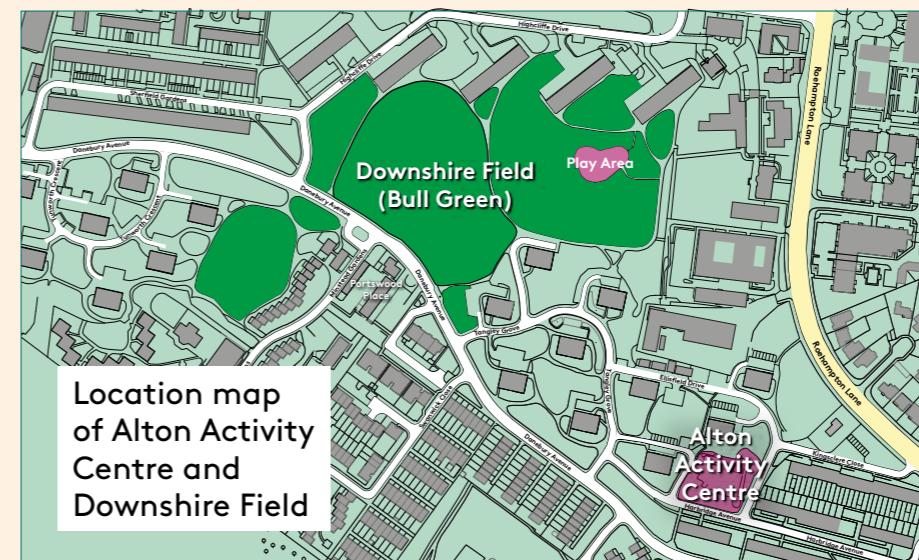
OPTIONS REVIEW FOR THE ALTON ESTATE REGENERATION



Following the community engagement undertaken in February, a detailed analysis of the feedback received has now been completed to identify your priorities for a future regeneration of the Alton Estate. We received over 500 written responses and met hundreds of local people face-to-face during the engagement period, which was fantastic.

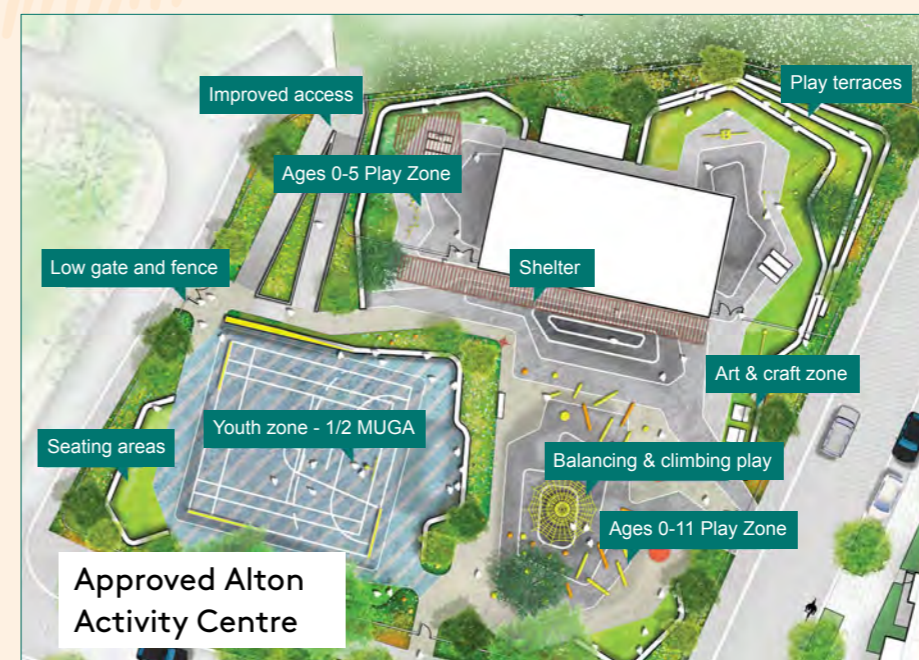
In addition to your feedback, the headline objectives have been developed using three other key factors, namely the new administration's mandate and priorities, existing and emerging council strategies, and addressing the specific needs of the area. The objectives have been identified around six key themes which reflect the feedback we received from the engagement:

Theme	Objectives
Community 	Improved community facilities (particularly library and GP services) Improved shops (larger supermarket) Improved children/youth facilities
Neighbourhood 	Improved estate management and maintenance Protection of open space Improved perceptions around safety
Accessibility 	Improved local bus services Improvement in accessibility and movement Support for a new access to Richmond Park
Economic Inclusion 	Attracting new shops and businesses More skills, training, and employment opportunities
Environment 	Improved energy efficiency of homes
Homes 	Support for more council homes and higher proportion of affordable homes Addressing overcrowding Balance between the number of homes and green space



Location map of Alton Activity Centre and Downshire Field

Images of what Downshire Field and Alton Activity Centre might offer are below - these may change based on feedback from residents and as part of the process for securing planning consent to undertake the works.



The June Housing committee approved the objectives, which will now form the criteria for assessing the shortlist of options and, when we know what these are, we will carry out further engagement in the community and with stakeholders more broadly.

Read the full Engagement Findings report, as an appendix to the June 2023 Housing Committee report, on [wandsworth.gov.uk/roehampton](https://www.wandsworth.gov.uk/roehampton).

In addition, we are also looking at proposals to bring forward an Early Improvement Plan, consisting of the delivery of the Roehampton Community Hub (formerly known as Block A), as well as external improvements to Alton Activity Centre and landscape enhancements to Downshire Field.

The recent engagement process clearly indicated your continued support for improving our community facilities, play space and open spaces. A design team has been appointed and, as timescales for the delivery of these proposals become clearer, we will provide an update through the newsletter.

We have already started engaging residents on current and emerging designs for the three elements of the Early Improvement Plan and will continue engagement throughout the summer, so look out for us popping up at events near you!



FONTLEY WAY DEVELOPMENT UPDATE

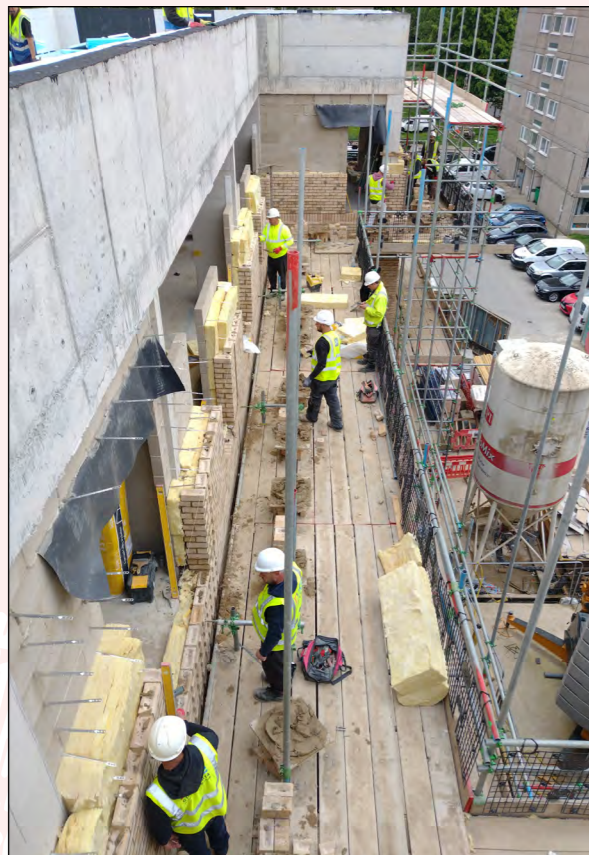
Introducing Gerard House

We are delighted to announce that the new development on Fontley Way has been formally named 'Gerard House'!

The block, consisting of 14 new council homes, has been named after the former English poet and writer, Gerard Manley Hopkins (1844 - 1889), who lived and studied in Manresa House on the Alton Estate. Local ward councillors deliberated over a shortlist of people who had contributed to the community over the last few centuries, and Gerard Manly Hopkins was the final selection.

The construction of Gerard House continues to gather pace with the final floor of external brick works having been completed at the end of June and the form of the building having taken shape.

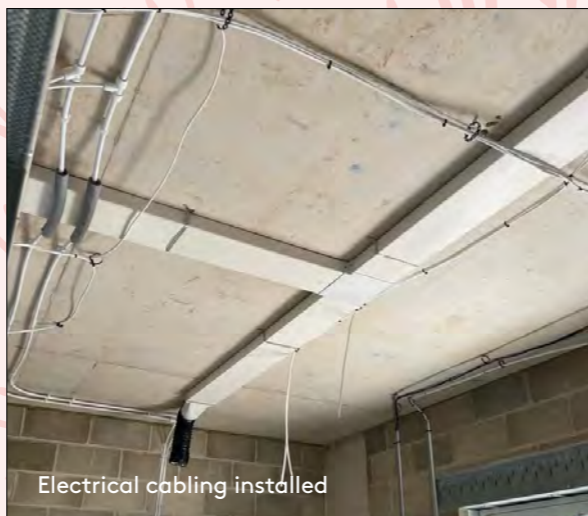
The next sequence of works focuses on the internal layout of the building, known as 'first fix'. These works include setting out partition walls, electrical wiring, and window installations.



Gerard Manley Hopkins.
Photo by Hulton Archive/Getty Images

In August, Stack will start painting and decorating the internal flats, as well as the communal areas.

The project is estimated to complete in Autumn 2023. The temporary parking restrictions that were enforced to allow for construction traffic to enter the site will be lifted at the same time.



Electrical cabling installed

News from the Housing Development Team

HOMES FOR WANDSWORTH PROGRAMME UPDATE

We recently shared our detailed proposals to develop land at Bessborough Road on the Alton Estate, as part of the Homes for Wandsworth programme.

Our proposals for land at Bessborough Road

The proposals being brought forward would provide eight much-needed specialist homes for people with learning disabilities within a high-quality sustainable scheme, which will help to meet the needs of our residents now and for generations to come.

Our proposals will also deliver high-quality new landscaping, enhanced play space, and improvements for wheelchair/pushchair access.

Consultation and Next Steps

Consultation events were held in May 2023 to share our proposals to develop land at Bessborough Road with the local community and obtain feedback on the plans.

Thank you to everyone who attended our events and provided us with feedback. Your local knowledge, thoughts and suggestions are important to help finalise our plans and ensure the very best schemes are brought forward.

We are now collating all feedback received and finalising our proposals for land at Bessborough Road. We are targeting submission of our planning application for the site in Summer 2023.

Visit our consultation website to find out more about our plans and sign-up to our mailing list for project updates: bessboroughroad-farnboroughhouse.co.uk



18 Attendees to the public exhibition	5 Feedback forms completed and returned	213 Unique visitors to the consultation website	264 page views across the website
--	--	--	--

Our proposals for land adjacent to Farnborough House

We are preparing our proposals for land adjacent to Farnborough House and hope to share our plans with you later in Summer 2023. Keep an eye out for an invitation to future consultation events, to find out more and have your say.

Homes for Wandsworth
1,000 homes for council rent



MEANWHILE USE ON THE ALTON ESTATE

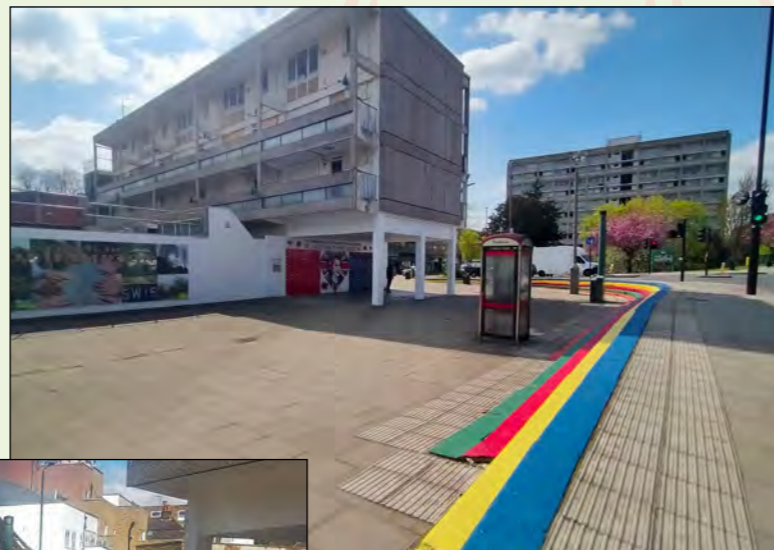


In the previous edition of Alton News, we introduced you to our 'meanwhile use' proposals for the paved areas around the old Co-op block, and featured the fabulous benches, planters and bunting that had already been made and installed by volunteers from the Roehampton community.

This site, on the corner of Danebury Avenue and Roehampton Lane, is the location of the proposed 'Village Square' in the Alton Regeneration's Early Improvement Plan and, therefore, meanwhile use offers the opportunity to trial new and innovative ways of using open space in this area on a temporary basis, as well as making it more visually attractive, usable and welcoming, before such a time that the Village Square is delivered.

In April, we started the second phase of our meanwhile use project in this area which focussed on giving it a brighter and cleaner appearance.

We added a fresh coat of paint to the walls, ceiling and pillars around the undercroft and to the bare concrete walls of the car park area behind the old Co-op block.



We repaired the ceiling of the undercroft, and applied a rainbow-coloured paint design to the steps adjacent to Roehampton Lane. 'A lick of paint' was a highly popular option in the meanwhile use community survey that we undertook last Winter and, we hope you agree, it proved most effective in enhancing the area.



**Calling all
gardening
enthusiasts!**

If you are interested in getting involved with community gardening projects on the Alton Estate, please contact vicky.marie.pigott@gmail.com and jo.baxter@richmondandwandsworth.gov.uk



On a gloriously sunny afternoon in May, we joined forces with the Housing Community Champion, Vicky Pigott, to launch the newly decorated area by creating a sustainable living wall on the freshly painted sides of the garage area behind the old Co-op block. 'Recycling household waste' featured highly in the results of the meanwhile use survey and, therefore, over several months, we collected tin cans from our domestic waste to use as pots.

The Roehampton Community Shed assisted in creating holes in the cans for drainage and hanging, and Vicky painstakingly threaded string through and stuck tape around the sharp edges of the cans. We were joined by over 50 children, parents and passers-by in front of the Welcome to Roehampton mural to plant beautiful flowers in the cans and hang them on wooden trellis in the garage area. Children hung wooden hearts with their names next to their cans to remind them which can was theirs so they could water and maintain it.

Spacehub Design Limited, the appointed landscape architects for the design of the Early Improvement Plans, were also present at the planting event to discuss proposals for the future Village Square, as well as the Alton Activity Centre playspace and Downshire Field improvements, and to hand out seed balls that attendees could take away and plant around the Estate. Thank you to everyone who came along to share their thoughts.



Our contractor on Fontley Way, Stack London, has also installed some lighting along the outdoor gallery and to the ceiling of the undercroft, which helps to illuminate the community artwork underneath and enhance visibility during the hours of darkness. Stack's generous offer also provides additional lighting for any meanwhile use or engagement activities held in this area.

What's next...

We are well on our way to delivering our 'bath planter' project! Our meanwhile use survey showed that there is a high level of community support for 'upcycling' as well as for, more specifically, 'reusing abandoned materials'. We have, therefore, removed some of the steel bathtubs from the vacant properties in the former Co-op block and our friends at the Roehampton Community Shed are helping us to transform them into freestanding planters. On **18th August**, the Alton Greened community gardening group will plant some stunning, colourful flowers in these bath planters, which will be positioned in front of the Welcome to Roehampton mural. Feel free to join us there at **noon** to 'plant up the baths'!

The community has put a lot of work over several months into adorning the space around the old Co-op block with beautiful bench-planters, bath-planters and a living wall. We want to keep our plants in bloom for as long as possible and healthy so that they flourish again next year. If you are passing by, please do admire the flowers and give them a water, particularly over these warm, dry summer months, so that we can enjoy them for many seasons to come!

We'd love to hear from you!

We are continuing to develop exciting ideas for future Meanwhile Use arts projects and would love to hear from you if you want to be involved! Please contact us by email: Roehampton@wandsworth.gov.uk



London Borough of Culture 2025 - let's do this together!

Wandsworth is going to join the race to become London Borough of Culture in 2025!

Wandsworth will showcase its communities, creativity and culture; with everyone invited to work together and support the bid to be named London Borough of Culture.

Winning the title would attract investment and job opportunities to the borough as well as funding towards a year-long programme of events to celebrate local culture and heritage, and help residents to lead healthier and happier lives.

Council Leader Simon Hogg said: "We're delighted to be going for London Borough of Culture 2025 - it signals real confidence in a changing, modern Wandsworth. We can't wait to

show London and the world what our wonderful borough has to offer. We need to do this together - so we want to hear your ideas to shape our proposals for the borough's bid."

Over the summer, the council will work with communities across Wandsworth to develop a London Borough of Culture proposal that builds on all the creativity and vibrancy that Wandsworth has to offer, from award-winning cultural organisations to heritage and grassroots community groups, freelance creatives and artists.

Find out more and support the campaign at wandsworth.gov.uk/culture

OUR NEWEST RESIDENTS

We welcome our newest residents to the Alton estate - a family of wrens!

Wrens' nests are traditionally built using moss, plant material, leaves, and feathers, and can be found located in a hollow or crevice in a tree, wall, bank or rock face.

The purposeful slab block style of Robert Clatworthy's Bull sculpture on Downshire Field cleverly resembles a rock face and seems to have got the seal of approval from these nesters!

Wren facts:

- An adult wren weighs about the same as a £1 coin making them one of the lightest birds found in Britain.
- For such a small bird, the wren has an astonishingly loud song. In fact, per unit weight, it sings at ten times the power of a crowing cockerel!
- Good news for arachnophobes - wrens feed on spiders and small insects.



COMMUNITY ENGAGEMENT QUARTERLY ROUND UP

Over the past few months, the Alton Regeneration team has been involved with a full and varied programme of events and activities on the Alton estate, including:

WOMEN ON STAGE - A CELEBRATION OF INTERNATIONAL WOMEN'S DAY



Following on from the success of last year's event, SW15 Women's Network and the Alton Regeneration Team joined forces again to present their 'Women on Stage' event; a celebration to mark International Women's Day in March.



The evening was a combination of spoken word, song, and dance from inspirational local women.

The evening opened with 'Melody and the Dragons', a home-education dance group who were followed by Nasirat ul Ahmadiyya who sang a poem that they had performed in celebration of the Ahmadiyya Muslim Women's Association's 100 year anniversary.

Tatiana Dobрева, the local Children's Librarian, read a poem and our songstresses for the evening were Verena Nash accompanied by Councillor Claire Gilbert on cello performing healing melodies, Claire Doran singing uplifting opera and Nolita Golding who got everyone up on their feet with her Salsa sounds. In fact, Nolita kept singing whilst we cleared up! #BinBag Boogie

In keeping with the international theme, guests feasted on Caribbean, Filipino and Indian buffet food and children were encouraged to wear clothing inspired by a country of their choice.



MUM'S THE WORD!

In mid-March we invited families to join us for Crafternoon Tea at Portwood Space. Whilst the Mums relaxed with a cuppa and a biscuit, their children were busy creating beautiful cards, poems and mementos to present to them on Mothering Sunday.

Some children decided to decorate cards as a token of love and appreciation for other valued motherly figures in their lives, including their grandmothers, Godmothers and teachers. We expect there were many happy Mums across Roehampton on Mother's Day!



COMMUNITY ENGAGEMENT QUARTERLY ROUND UP (CONTINUED)

EASTER ON THE ALTON ESTATE



EASTER EGG-CITEMENT

Roehampton Library and the Alton Regeneration Team jointly hosted their annual Egg-Tastic Easter Party during the school Easter holidays.

Over 150 children attended, along with their parents/guardians for crafting and a fun-filled scavenger hunt with clues hidden amongst the books in the children's library. The children were rewarded with chocolate goodies on completion.

It was a real success, with lots of children joining the library that day and taking out books for the first time. We think every-bunny enjoyed themselves!



BONNETS FIT FOR A PARADE



In the 19th century it was traditional to wear new clothes for Easter, including bonnets which were decorated with ribbons, flowers and lace.

In keeping with this tradition, we transformed Portswood Space into a bonnet-making workshop! Creative families came along and decorated colourful hats with ribbons, bunnies, pompoms, eggs, and spring flowers. We hope you'll agree that they look fit for a parade!



RAIDERS OF THE LOST ALTON



In April, we launched the Metal Detector Club on the Alton estate.

With metal detectors and spades in hand, families set off to Downshire Field to explore outdoors.

Whilst we didn't find buried treasure, we did find a trove of other goodies including a pair of sunglasses, an old key and coins from Hungary, Turkey, Australia and the UK, as well as Euros.

The club runs during school holidays, so the gang met up again during the May half term break - this time on the green outside Roehampton Library.



The club is next meeting on **Wednesday 9th August at 2.30pm** at Portswood Space (4 Portswood Place, SW15 4ED). Metal detectors, spades and refreshments will be provided, so just come along!

DANCIN' THROUGH THE DECADES



As the evenings started to get lighter and warmer, it was time to dust off our dancing shoes and join 'DJ Decades' as she took us on another musical tour of the 50's, 60's, 70's, 80's and 90's.

Attendees requested their dance floor favourites - we started with 'Jailhouse Rock' and finished with 'I Want To Break Free'. Our guests rocked it! Our popular 'Back To My Youth' event was attended by residents from all over the estate and their friends from across the borough. Everyone enjoyed themselves and no one wanted the evening to end! One attendee told us it was one of the best nights she had had in a long time.

NO ONE GOT JUST SOCKS!

On a very warm afternoon in mid-June, under gazebos at Portswood Place, families joined us to create personalised Father's Day cards and key rings for the special men in their lives.

To help everyone stay cool, the team handed out ice pops. A couple of dads have told us how chuffed they were to receive a handmade card this year.



FROM WEST VIRGINIA TO THE ALTON ESTATE



Rah Rah Theatre, who regularly perform at our Over 60's events, returned in June with their latest show 'Country Roads, Take Me Home'. It was a perfect mix of comedy, singing and line dancing and seemed to include the whole of Dolly Parton's back catalogue!

We were even treated to a line dance demonstration from Antonia from our Regeneration team and Steve, the Manresa Sheltered Housing Officer! The audience sang along and heckled the actors (and honorary dancers!) with equal measure.

After the show the guests were treated to hot dogs and ice cream. It was a fun afternoon and nice to see lots of new faces!



COMMUNITY ENGAGEMENT QUARTERLY ROUND UP (CONTINUED)

WANDSWORTH ARTS FRINGE ON THE ALTON ESTATE



Every year, for two weeks in June, Wandsworth Council hosts its annual Wandsworth Arts Fringe (WAF). WAF started in 2009 and has got bigger every year. This year, the Alton Regeneration team was delighted to host several events during the festival.

How many did you manage to attend?



DYLAN DODDS & FRIENDS 2 (FRIENDS STILL NOT INCLUDED)

Opening the WAF 23 showcase of Alton events was a joke-packed show from comedian Dylan Dodds. Dylan performed in the Alton Arts Hub and said "The space is perfect. An excellent room for an intimate stand-up show".

G64 THEATRE FOR YOUNG PEOPLE



Working with Group 64 Theatre Company, residents of the Alton Estate created an exciting new piece of theatre that offered an insight into the past, present and future of the Alton.

'Story catchers' collected a multitude of stories from people of all generations, to show and celebrate the rich culture and joyful sense of community that exists here. G64 Directors worked with children from Heathmere Primary School, along with teenagers, adults and older people, to understand what it really means to be from the Alton!



The 'Alton, A Place I Call Home' story featured two time travellers, ALi & TONi, who arrive 'home'. The audience were taken to a bingo night, the set of Fahrenheit 451, the library, a sunny day at Richmond Park, and a dance competition.

"Home is what you make it. It's not a building, it's a place where love is. These buildings hold love."



JELLYFISH THEATRE - THE JUNGLE BOOK



Jellyfish Theatre returned by popular demand to the Alton with puppetry, music, and laughter.

Monkeys, tigers and panthers were amongst the many animals that popped up on Downshire Field during this relaxed, interactive, new adaptation of Rudyard Kipling's wonderful Mowgli stories. JellyFish brought a BSL interpreter to sign the show, to ensure it really was inclusive to all. A special mention must go to the actors who wore furry costumes in 27-degree heat!



HALLOMAI DANCE – JOY IS OURS



Hallomai Dance explored what makes us joyous in our daily lives, during their interactive performance that included a giant hair scrunchie!

Hallomai are a UK-based contemporary dance company focused on creating interactive performances and facilitating workshops for young people, their families, and the wider community. Once the dancers had finished their performance, they invited the kids in the audience to join in to create a spontaneous piece. The kids didn't need asking twice!



GROW ROEHAMPTON STREET BAND



The band, which included over 50 children from schools in Roehampton, performed specially composed and arranged music in a procession that started outside the library, and proceeded along Danebury Avenue, finishing by the new rainbow steps.

If you would like to busk or perform in this space, please contact Jo.Baxter@richmondandwandsworth.gov.uk



ON THE CLOUDS KIDS - UNDER THE SEA YOGA ADVENTURE



Grownups and their little ones were guided through a moving story which combined traditional yoga practice with modern storytelling to create an epic adventure. Along the way they discovered different things that live underneath the sea.

Join Izzy from On The Clouds Kids for a free workshop during the school holiday which will include drama, games, stories and fun for children aged between 5 and 11 years old.

The workshop will take place at Portwood Space (4 Portwood Place, SW15 4ED) on **Tuesday 29 August, from 3.30pm to 4.30pm.**



Thank you to all the performers who brought their shows to the Alton estate this year.

THE KING'S CORONATION ON THE ALTON ESTATE ALTON'S CROWNING GLORY



Whilst Buckingham Palace was busy getting ready for the Coronation of King Charles III, families from the Alton estate joined our Crown Making Workshop at Portswood Space to make their own jewel-encrusted crowns.

With help from Jo from our Alton Regeneration team and Tatiana from the library, children personalised their crowns with glittery embellishments and then posed regally for photos. The photos were printed onto sheets of paper and added to the contents of the Alton Time Capsule.



A SNAPSHOT IN TIME

To commemorate the Coronation and to welcome the beginning of a new era, known as the Carolean era, we were delighted to welcome the Mayor of Wandsworth, Cllr Jeremy Ambache, and our local MP, Fleur Anderson, to join us for the burial of the Alton Time Capsule on Downshire Field (known locally as Bull Green).

The time capsule represents a precious snapshot of current life on the Alton, with items contributed by local schools, faith groups, community groups and local services. The intention is to communicate with future residents of the estate and give them an insight into our lives. When they open it, they will know what we did, what we looked like, what we ate, what we hoped for and - of course - how we celebrated the coronation.

Inside the capsule are items that represent our lives today. This includes newspaper pages, photos, letters, menus, event flyers, and other mementos such as the winner of Heathmere School's tea towel design competition and a 'Letter to the Future' written by Fleur Anderson on House of Commons' paper.



Most important of all, the time capsule represents the Alton estate - our sense of belonging and community spirit - which is what makes this such a special place.

Post Event Note: A lot of time and effort goes into planning the events that we put on. We have learnt that, in future, all we need to do is dig a large, muddy hole and the kids are enthralled!!



RUN, WALK, SCOOT

**Sunday 17th
September 2023
11am - 1pm**

Start wherever you like and finish at the Rainbow Steps at the top of Danebury Avenue. Pick up a stamp at each point to receive a medal. Routes are not marshalled, entrants are responsible for their own safety. Start anytime from 11am and finish by 1pm.



PLANTING UP THE BATHS

Friday 18th August, at 12 noon, at the Rainbow Steps/
Welcome to Roehampton mural on Danebury Avenue/Roehampton Lane.
Help us convert old tin baths into beautiful planters.

FLASH MOB SUMMER SALSA PARTY

Wednesday 16th August, from 4pm,
at the Rainbow Steps on Danebury Avenue.
Live singing & dance lessons.

MAKE AND CREATE

Thursday 10th August -
Make a purse or puppet,
Thursday 17th August -
Learn how to Tie Dye,
2.30-4pm, at Portswood Space,
4 Portswood Place.



SQUIRRELLLED AWAY!

Urban Squirrels is wildlife rescue charity, based on the Alton estate. We caught up with Natalia Doran, Founder of Urban Squirrels, to find out how it started and what it does.

What is Urban Squirrels?

Urban Squirrels is a licensed wildlife rescue unit that specialises in the care, advice and advocacy of grey squirrels. We aim to take in injured or orphaned squirrels, mostly babies, hand-rear and treat them as necessary. Our bushy-tailed clients are brought to us directly by members of the public or referred by vets and other rescue organisations.

How did Urban Squirrels begin?

Urban Squirrels was started by myself and my son, Jonny, who is a young adult with autism. Jonny wanted to work with animals and, with support, got his Level 2 Diploma in Animal Care. However, his disability, which is severe (autism is a spectrum and Jonny is at the severe end of it), makes it impossible for him to work outside the home, even in a voluntary capacity.



Jonny Doran

But why grey squirrels?

For Londoners, grey squirrels are the only diurnal wild mammal that we see on a regular basis. Furthermore, because grey squirrels are highly intelligent, they quickly figure out whether a particular human is a danger to them or not, and form friendships that are mutually beneficial: the squirrel gets extra food, the human gets animal companionship that might otherwise be denied to them because of their life circumstances.

Befriending a grey squirrel can be like having a pet, but without the responsibility! During the recent Covid-related lockdown many people saw grey squirrels as their 'lockdown buddies' and considered them essential for their mental health.

But aren't grey squirrels non-native?

Grey squirrels were brought from America around 150 years ago. However, they have proved an excellent ecological fit, and are now firmly established in the British habitat. Many people love and admire the furry acrobats for their agility, intelligence and sheer survival drive, and are happy to watch them, and sometimes feed them, in the parks and in their gardens.



Natalia Doran



of this legislation, and the papers are now in court. We are trying to save grey squirrel rescue in this country. At the time of writing, we know that animals are being put to sleep by vets, or left to die in parks and gardens, because rescue centres cannot legally help them.

Where can we find out more?

For more detailed information, cute squirrel pictures, and rescue updates, follow us on: Twitter: twitter.com/squirrels_urban Facebook: facebook.com/UrbanSquirrelsRescue Instagram: instagram.com/urban_squirrels/ TikTok: tiktok.com/@urbansquirrels

Don't they kill red squirrels and destroy trees?

These are urban myths, and Urban Squirrels spends a lot of time debunking them. Please have a look on our website for details, including advocacy pages, essays, references to scientific research, campaign updates, and much more.

The address is www.urbansquirrels.co.uk

What care do squirrels in rescue need?

Our work is very rewarding, but challenging as well. Baby squirrel have to be fed formula every 4 hours, around the clock, and are not fully weaned till they are a couple of months old. Injured squirrels require veterinary attention – fortunately, we are located close to a surgery run by a vet who is a wildlife specialist. Last but not least, just keeping a high number of animals in one

location means a phenomenal amount of cleaning. Fortunately, we have a network of volunteers and supporters.

What is the crisis Urban Squirrels is facing at the moment?

Recent legislation makes it illegal for animal rescue centres to return grey squirrels, whom they help, back to the wild. Residential places are full, and animals have to be turned away or euthanised. Urban Squirrels has applied for a judicial review



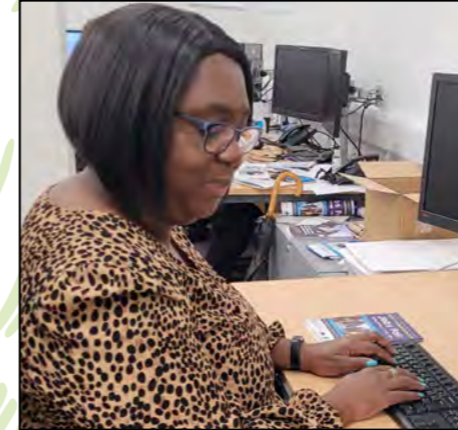
INTRODUCTION TO WORK COURSE

In March, Wandsworth Council's Work Match team commenced its 'Introduction to Work' programme at Portswood Space, which provided free employment support and training for Wandsworth residents.

The aim of the employability course was to provide residents entering the workplace for the first time, or those returning after a break, the confidence and skills needed to secure the job they

desired. Wandsworth Work Match also wanted to ensure that it was accessible to the local community in Roehampton, so Portswood Space was the ideal location.

As it was a small group, the participants quickly built a rapport and shared their personal stories with one another. Feedback from attendees showed the sessions were a great success:



Sonia Wilson from Work Match

During 4 two-hour sessions, residents covered various topics such as:

- Identifying transferable skills
- Building strengths, confidence, and self-belief
- Limiting beliefs
- Creating or reviewing CVs
- Identifying what employers are looking for, including 'soft skills'
- The Comfort Zone and the Growth Mindset
- Cover letters/emails
- Interview Preparation

"Very good breakdown to realize my past job and situation, especially how to deal with difficult situations"

"Very positive atmosphere and motivation from Juliet"

"I built up my confidence"

The course is being delivered in other areas in the borough.

For further information or to register for the sessions:

Telephone: 020 8871 5191

Email: wandsworthworkmatch@wandsworth.gov.uk

Visit: wandsworthworkmatch.org

Richmond Park's FREE transport service

The minibus service in Richmond Park returned in April, with an extended route that includes East Sheen.

This free service operates every Monday, Wednesday, and Friday, until 29 November 2023, between the hours of 9:25am and 4:20pm. The service runs between all the Richmond Park car parks, Ladderstile Gate, Richmond Gate, Pembroke Lodge, and Isabella Plantation.

The service starts and finishes at the barrier on Danebury Avenue and goes out to Ham, Ashburnham Road (371 bus stop), Ham Gate Avenue (near to the 65 bus stop), and Mortlake Station (969 stop) outside the Community Centre. The full timetable can be found on www.royalparks.org.uk.

The minibus is free, with a ramp and steps to aid access. Wheelchair users wishing to use the service should contact jmeays@royalparks.org.uk or volunteering@royalparks.org.uk.

This service is funded by private donations to The Royal Parks charity and allows those who otherwise would not have access to the park the ability to enjoy the natural environment of this National Nature Reserve.

Paul Richards, Park Manager at Richmond Park said: "We are thrilled to be bringing back the minibus to Richmond Park and adding additional services. We want the Royal Parks to be open and accessible for everyone and this service is a way we can further ensure that more visitors can visit this exceptional landscape."



Above (from left to right) Cllr Chris Varley, Sarah Olney MP, Cllr Nancy Baldwin, Cllr Margaret Dane from Richmond Council by the minibus

MINIBUS SERVICE FREE 16-SEATER

RP1 Richmond Estate - Pine Forge - Isabella Plantation - Broomington Estate - Richmond Park and East Heath Village - Ham Gate Avenue and Mortlake Station

Routes: Danebury Avenue (barrier) - Service for 2023

Direction	Day	Start Time	Intermediate Stop	End Time
Danebury Avenue (barrier)	Monday, Wednesday, Friday	09:25	Ham Gate Avenue	10:00
			Mortlake Station	10:25
			Ham Gate Avenue	11:00
			Danebury Avenue (barrier)	11:30
Danebury Avenue (barrier)	Monday, Wednesday, Friday	09:25	Ham Gate Avenue	10:00
			Ham Gate Avenue	10:25
			Mortlake Station	11:00
			Ham Gate Avenue	11:30
			Danebury Avenue (barrier)	12:00
Danebury Avenue (barrier)	Monday, Wednesday, Friday	09:25	Ham Gate Avenue	10:00
			Ham Gate Avenue	10:25
			Mortlake Station	11:00
			Ham Gate Avenue	11:30
			Danebury Avenue (barrier)	12:00
Danebury Avenue (barrier)	Monday, Wednesday, Friday	09:25	Ham Gate Avenue	10:00
			Ham Gate Avenue	10:25
			Mortlake Station	11:00
			Ham Gate Avenue	11:30
			Danebury Avenue (barrier)	12:00



How can residents contact urban squirrels?
We can be contacted on 07415 983 900, or via email Nataliadoran8@gmail.com

ROEHAMPTON COMMUNITY HEALTH CHAMPIONS

In August 2022, Roehampton-based organisation, Estate Art, won the bid to run an NHS scheme to establish a network of community health champions.



Lynne Capocciama, Director of Estate Art

Unlike previous schemes, this project aims to be 'for the community, run by the community'. It seeks to address health inequalities across Roehampton and help local people to improve their health by providing better access to information and support.

Ten Community Health Champions have been recruited and trained to engage in conversations with their neighbours and networks and to

support them to manage and improve their own health and wellbeing.

The Health Champions have held a number of events in Roehampton in partnership with local organisations, offering health checks and advice on physical and mental health. Estate Art have also arranged free yoga classes across a number of venues in Roehampton.

The champions have also conducted a health survey. The results help give residents a voice and highlight the services needed in the area to tackle health inequalities. One of the main factors highlighted in the survey results is mental health impacted by the cost of living.

Estate Art and the Community Health Champions welcome members of the community to drop in to have a cuppa and a chat with them at the Manresa Clubroom, Fontley Way, SW15 4NF. The 'Roehampton Community Health Cafe' runs three days a week:

- Monday, 10am -1pm
- Wednesday, 4pm -7pm
- Saturday, 10am -4pm



A further programme of events and focus group sessions will be organised based on the needs of residents.

We caught up with two of the Community Health Champions, to hear about their experiences of the scheme.



Symone Planner

Symone Planner: "I'm Symone, a local resident, parent governor at the Alton primary school, and a Community Health Champion with Estate Art Ltd. My role as a Health Champion has enabled me to become a bigger part of the community, by not only being a friendly face to fellow residents, but also being someone

they can talk to, or ask for help with various needs. We pick up on health inequalities in and around the estate by way of surveys, and using the data collected from them, we then set up events for people to come to and get more information. For example, we have picked up on a rise in people being pre-diabetic, and even liver cirrhosis. I'm able to signpost residents to local services that may be able to help them, such as talking therapies or, at the moment especially, with the cost-of-living crisis.

I was introduced to Lynne Capocciama by a local councillor, Jenny Yates, and when Lynne explained to me what it is that Health Champions do, I was instantly interested in becoming one. I've had the opportunity to have training on various things, like health coaching, and I have also been able to go on courses to gain qualifications which will go on my CV and help with future employment opportunities. Knowing I've helped out even just one person in the community, makes it all worthwhile."

Joanna Playford: "Hi, I'm Jo. I've lived on the Alton Estate for 17 years and started a residents' association for my building and its residents 3 years ago, with a view to improving community relations and the surrounding area. I'm also a member of the SW15 women's network. Being a Health Champion means I can signpost local residents to relevant health services if they need it, as well as work on other, larger community projects with specific focuses. I got involved because I believe that the residents in Roehampton have long been neglected in general. I believe that socioeconomic status shouldn't equal worse health, but unfortunately it does, and has done all over the country for too long. I want to be a part of changing that."



Jo Playford with Lynne Capocciama. Champions on the banner: Andrea Gilbert, Ciaran Curran and Symone Planner (left to right)

As a Health Champion I, along with other Health Champions, help to organise and run events for local residents to encourage them to improve their health or find the resources they need in order to do so. I've also attended an NHS group discussion on experiences in local emergency service care, where residents offered their own experiences and opinions in order to help improve it.

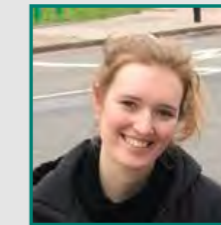
The Health Champion scheme is just getting started. There are now regular health cafes on every week that are open to all residents. They can come along to these cafes and ask for any help they might need. This is not just about the larger events where you can get a health check, which we ran earlier in the year; it's about helping those suffering due to the cost-of-living crisis, bereavement and loneliness too. I now have much more knowledge of the local services available to residents than I had a few months ago, that I can share with my community if they need it.

My favourite thing about being a Health Champion is meeting local residents and doing what I can to improve their lives. My highlight so far has to be the Coronation celebration at Grosse Way. I had the best time helping serve food and drinks while residents were entertained with a singalong!"



Singalong cake

News from the Western Area Team



INTRODUCING OUR HOUSING TRAINEE, KATIE LEECH

"Hi, I'm Katie, a Housing Management and Services Trainee. I'm currently working in the Western Area Team as an Estate Manager covering Tanglely Grove and The Platt Estate.

The Housing Management and Services Trainee scheme is a two-year programme, made up of various placements across the Housing Directorate. Alongside my trainee placements, I am completing a Level 5 Diploma in Housing qualification. This qualification has provided me with an opportunity to gain a deeper understanding of the social housing sector and reflective housing practice, as well as other essential practical skills to help in my role at Wandsworth Council.

Prior to working in the Western Area Team, I completed a placement in the Alton Regeneration Team where I got to know the Roehampton area and the Alton Estate. I worked alongside the Regeneration Project Officers on Meanwhile Use projects and helped put together the previous issue of this newsletter!

I joined the Council in 2021 after leaving a private sector job to pursue a new challenge, and I haven't looked back since! I have really enjoyed working with my fantastic colleagues at Wandsworth Council and getting to know so many friendly residents in Roehampton.

Please say hello if you see me out and about on the estate!"



FREE GYM FOR LOCAL RESIDENTS



Under a new initiative from Wandsworth Council, Roehampton Recreation Centre is pleased to be able to offer free concessionary off peak* gym memberships to local residents on low income.

Those eligible include recipients of free school meals up to the age of 15 (membership includes 1 adult and up to 2 children), residents on Universal Credit, and asylum seekers. In addition, foster carers who currently foster in Wandsworth borough are eligible for free membership, which includes up to 4 juniors.

For further details, visit placesleisure.org/centres/roehampton-sports-and-fitness-centre, email enquiries@roehamptonssportandfitnesscentre.co.uk, or call in and talk to the friendly reception team.

* Off peak is any time before 5.30pm on weekdays and all day on the weekend.

MEET THE REGENERATION TEAM!



We'd like you to get to know the Alton Regeneration team. In the last edition we featured our Senior Project Officer, Antonia De Lima. This time we're shining a spotlight on our Head of Regeneration, Mrs Anna Singleton!



Anna joined Wandsworth Council in 2007 and cut her teeth as an Estate Manager in the Southern Area Team, before joining the Eastern Area Team as a Senior Estate Manager. She moved across to Roehampton and the Western Area Housing Team in 2011 and has pretty much been here ever since! A move away from Wandsworth in 2018 was short-lived and she returned to join the Regeneration Team in 2019.

Anna has a deep affection for the Alton, having got to know the estate and its residents so well over a number of years. She is absolutely committed to ensuring the regeneration delivers the best possible outcomes for everyone and she regards working alongside such a hard-working and dedicated team an absolute privilege.

Away from work, Anna likes to keep fit and enjoys mountain biking with her family. She is also a keen runner and, in addition to running the 2022 Great North Run (as featured in edition 33 of Alton News), she has even managed to complete the London Marathon a few times. We expect to see her setting the pace at this year's Run, Walk, Scoot event on 17th September!

Sign up to receive text alerts

Our text message distribution list will enable residents to receive news and event information relating to the Alton Regeneration quickly and directly.

If you are interested in signing up to receive our text alerts, please call or text **020 8871 6207** or email us at roehampton@wandsworth.gov.uk with your name, address, mobile phone number and the phrase/subject line 'Alton text alerts', and we will add you to our SMS distribution list.



Alton Newsletter have your say!

The Alton Regeneration Team try to put together news and articles that we think you'd like to hear. Do you enjoy it? Is it relevant and of interest? What else would you like included?

We'd appreciate your feedback to help shape future editions.

Please send any complimentary comments or constructive criticism to our mailbox, roehampton@wandsworth.gov.uk putting 'NEWSLETTER FEEDBACK' in the subject line.

Or call us on **020 8871 6207**.

We look forward to hearing from you.



Roehampton Ward Councillors

Councillor Jenny Yates
cllr.j.yates@wandsworth.gov.uk

Councillor Matthew Tiller
cllr.m.tiller@wandsworth.gov.uk

Councillor Graeme Henderson
cllr.g.henderson@wandsworth.gov.uk

You can also contact the Cabinet Member for Housing:

Councillor Aydin Dikerdem
cllr.a.dikerdem@wandsworth.gov.uk



Regeneration Team

You can contact the Regeneration Team on **020 8871 6207** or [@AltonMasterplan](https://twitter.com/AltonMasterplan) or at roehampton@wandsworth.gov.uk



If you would like to discuss anything in person with a member of the team, please contact us and an appointment can be arranged. You can also find us at the Information Stall outside the Base on Danebury Avenue each Friday, from 2pm-4pm.



H2269 (6.23)