

Brightside

Issue 199 March 2023

The magazine of Wandsworth Council



Council tax freeze

page 4

Help with the Cost of Living - page 6

Coronation Street Parties - page 8

Future Streets - page 12

Delivered to 140,000 homes - Balham Battersea Earlsfield Furzedown Putney Roehampton Southfields Tooting Wandsworth



**COME and have
a CHAT today about YOUR
HEALTH...**



**We are out and about in the borough
encouraging residents to have fun,
be active and stay healthy.
Here are some of the things you can do.**



**Be active for at least 22 minutes,
every day of the week**



**Walking to the shops or being
active at home counts towards
your 22 minutes**



**Get advice to stop smoking
You are 4 times more likely to quit**



**You can make affordable,
budget friendly food swaps to
help remain healthy**

**For tips and advice to stay healthy, visit
[wandsworth.gov.uk/healthylifestyle](https://www.wandsworth.gov.uk/healthylifestyle)**

4



Council tax freeze

6



Free swim and gym

8



Get ready to party

Inside this issue

Helping you through tough times	6
How to organise a Coronation street party	8
Welcome for Apple	11
Future Streets update	12
Affordable workspaces	14
Ten years of Work Match	15
Food waste scheme expanded	16
Night Time Strategy	21
All aboard the health bus	23
Wandsworth on Film	25
What's On?	27
Wanted – hosts for Ukrainian families	30

Cover image: Wandsworth Warm Spaces welcome everyone. Find your nearest at wandsworth.gov.uk/warm-spaces

To obtain a copy of Brightside in large print please telephone (020) 8871 7266 or email [brightside @wandsworth.gov.uk](mailto:brightside@wandsworth.gov.uk)

OUR BRIGHTSIDE

Brightside is delivered to every home in the borough and pushed fully through the letterbox.

If you have any suggestions for articles or have a story you would like to tell us about please email: brightside@wandsworth.gov.uk or call: Editorial (020) 8871 8902 Advertising (020) 8871 7266

We would love to hear from you.

Brightside is printed on environmentally friendly paper, please recycle.



**council
tax freeze**
**better services
for all**

Council tax freeze

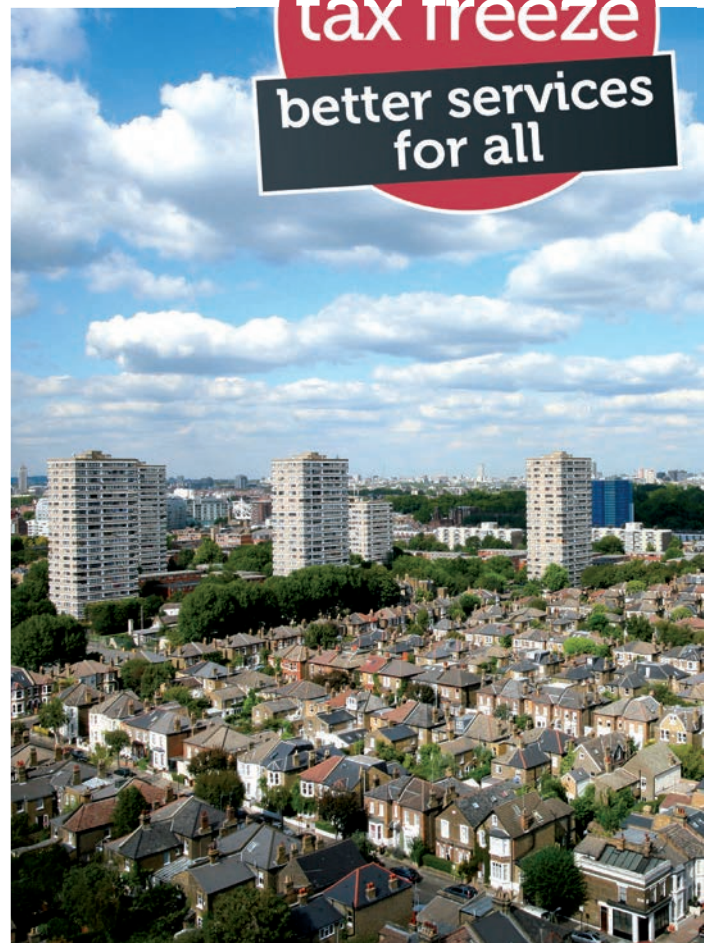
Wandsworth Council has frozen the main element of its council tax bills as part of its wider programme of support for local people during the Cost of Living crisis.

And more than 10,000 households will be taken out of paying council tax completely.

Wandsworth residents will continue to benefit from the lowest average council tax bills in the UK. Band D bills for households not subject to the additional Wimbledon and Putney Commons Conservators levy will be £914.

Wandsworth's council tax reduction scheme is being enhanced with an extra discount to reduce the bills of residents most in need of help by up to £150 in 2023. This will give an estimated 4,258 households the full £150 boost and lowers the bills of thousands more families during the Cost of Living crisis.

See over the page for other ways local people can get support.



Wandsworth Council is freezing your council tax this year, to help in the Cost of Living crisis.

I'm pleased to say that residents in Wandsworth will pay the lowest average council tax in the country. Freezing the main element of council tax is a key part of our plan to deliver a fairer, compassionate, more sustainable borough.

We will charge the same low council tax and deliver better services for all. Alongside a freeze in council tax, we will:

- Provide free monthly mega skips, guarantee to keep your weekly bin collection and expand our food waste collection pilot
- Deliver 1,000 new council homes, plus introduce landlord licensing to protect private renters
- Work with residents to support 800 Ukrainian refugees fleeing the war

Wandsworth Council has launched the biggest Cost of Living response in London, with a £5 million fund to help residents with soaring bills. This work includes:

- Free school uniforms for hard-pressed families, activities for young people and meals for children in the school holidays
- Free swimming and gym sessions for families who receive universal credit or free school meals
- Libraries and children's centres became welcoming Warm Spaces over the winter months

There will be an increase of two per cent in the social care levy, to support the NHS and care for our most vulnerable residents.

Wandsworth is a fantastic place to live. Our strong, diverse communities represent the best of modern Britain. Our plan will help keep Wandsworth special and make sure all residents can share the fantastic opportunities our borough provides.

Best wishes



Simon Hogg

Leader of Wandsworth Council





Help through tough times

■ As well as freezing the main element of council tax Wandsworth is doing all it can to help local people manage.

Wandsworth is keeping charges for council services low, freezing concessionary rates for services such as leisure centres, and providing extra financial support.

And over the winter our Warm Spaces scheme has provided somewhere warm and safe for people to go – including free food and activities in our children’s centres.

Here’s some schemes to help

■ Families on Universal Credit or free school meals can **swim and use the gym for free** in council leisure centres from this summer. More details will be made available soon, so keep an eye on wandsworth.gov.uk

■ The cost of hiring a **grass playing pitch has been cut** by five per cent to make sure everyone can get active. The cut kicks in on April 1.

■ **Council tax bills will be reduced** by up to a further £150 for vulnerable residents, taking more than 10,000 people out of council tax altogether. You will be sent details if you are eligible.

■ Hard-pressed families can get **help with buying school uniforms** and free school meals and other grants, benefits and allowances. **Visit wandsworth.gov.uk/fis** for information about this and other help for families.

■ The Wandsworth Connected scheme will see **free activities and lunches** during the Easter and Summer holidays. See more details on page 28.

■ The **Cost of Living Hub** has details on help available from the council and the voluntary sector, including crisis support and ways to get help with food. See the advert opposite.

■ Use our **online Support Calculator** to find out what benefits and support you could be entitled to. It’s quick and easy and the details you enter will be anonymous. wandsworth.entitledto.co.uk/home/start



■ Patricia Evans is one of the borough's resident leaseholders with more money in their pockets thanks to a new policy.

Wandsworth Council manages more than 32,000 properties across the borough and is responsible for their maintenance. This means from time to time it has to carry out major works to keep them in a good state of repair.

Previously, the council offered a 10-month interest free payment option for major works bills for resident leaseholders. But since September the interest-free payment period for works over £3,000 has been extended to four-years.

Patricia's block needed a new roof, concrete repairs, an overhaul of windows and repainting. She said: "With everyone feeling the pinch, I was worried about how I would be able to afford to repay but knowing that the repayment has been broken down like this it feels like a load has been lifted."



Wandsworth
Council

Cost of Living support

■ Help with grants, bills and benefits

■ Support for families

■ Where to turn in a crisis and more



visit: [wandsworth.gov.uk/hub](https://www.wandsworth.gov.uk/hub)
call: 0808 175 3339





Fawe Park Road, Putney and Ormeley Road, Balham

Celebrate together

Wandsworth is making it free to organise a street party in May so everyone can get together to celebrate the coronation of King Charles III

The council is waiving the usual fees for street closures. This will apply for parties held at any time during May, including the Coronation bank holiday weekend on 6-8 May.

You must apply by 2 April. Visit wandsworth.gov.uk/street-parties

Free community Coronation events will also be held in local parks and commons and the Coronation will be live-screened in Battersea Park. Follow [@enableparks](https://www.instagram.com/enableparks) on Instagram for updates.

Wandsworth has also provided funding for local groups to deliver Big Help Out activities, focusing on community volunteering. Keep an eye on the council's social media channels to find out about volunteering opportunities local to you.

The Mayor of Wandsworth Jeremy Ambache said: "Over the past few months I have visited so many local groups and communities and I know how strong and united we are. Let's show the rest of London what Wandsworth can do!"



“Let's show the rest of London what Wandsworth can do!”

JEREMY AMBACHE THE MAYOR OF WANDSWORTH





Welcome for Her Majesty

■ The Queen Consort paid a visit to the borough last month when she toured the STORM Family Centre on the Doddington Estate in Battersea.

She was shown around by the centre's founder and Chief Executive Marie Hanson MBE and learnt about the work that goes on there – including extensive support for victims of domestic abuse.

The Queen Consort cut a cake for the centre's 19th birthday, and unveiled a plaque celebrating her visit. She told Marie Hanson "I want to say a huge thank you to you for all you are doing to help the victims of domestic violence. I feel very privileged and honoured to have come and visited you all today."

Find out more about STORM at stormfamilycentre.com

The council works closely with local voluntary sector organisations and has a new team co-ordinating support.

Email amelia.willis@richmondandwandsworth.gov.uk



The Queen Consort is greeted by Marie Hanson MBE, the Mayor of Wandsworth Jeremy Ambache and the Deputy Lieutenant of Wandsworth Colleen Harris.



The Mayor of Wandsworth visited the project in action at St John Bosco

Saving scrapped bikes

Schoolchildren are restoring abandoned bikes that would otherwise be scrapped.

Pupils rebuild and repair the bikes alongside trained cycle mechanics and if they complete the course they get to keep the bike. They also get cycle training.

The scheme is run at several secondary schools across the borough by the council's road safety team. Most bikes are donated by the inspection and enforcement team, which is responsible for rounding up abandoned bikes.

Headteacher at St John Bosco College Patrick Sullivan said: "I think it is a perfect intervention – it's practical and students learn skills but also learn how to interact and work together. It gives them a great opportunity to talk and express themselves."

Any schools or youth groups interested in taking part should email dtsroadsafetyofficer@wandsworth.gov.uk.

Find out more about cycle safety, maintenance and training at wandsworth.gov.uk/cycle

Beware of parking scam

Drivers are warned to be on their guard against parking meter scams.

Thieves often target elderly people who at machines near doctor's surgeries or shops. When a motorist is attempting to use their bank card to pay for parking, one scammer watches to see what PIN number is being used, while another distracts the victim so that their accomplice can grab the bank card from the machine.

The scammers say the machine has swallowed the card and they will call the council. They then escape and head for the nearest cashpoint. One victim had £1,500 withdrawn from their account.

Parking machines cannot swallow bank cards. If your card goes missing while using a pay and display machine you have been a victim of theft and should immediately cancel your card and call the police.

Wandsworth welcomes Apple as local children thrive

Council leader Simon Hogg has welcomed tech giant Apple to its new Wandsworth home.

He visited their new office campus to discuss the benefits of a new local partnership in education, the environment, inclusion and the voluntary sector.

“We’re looking forward to being good neighbours and ensuring the positive effects of this relationship are extended across the whole borough with a focus on growth and job opportunities,” he said.

One of the most exciting projects has opened up new opportunities for schools. Over the past few months, Apple executives have visited St Mary’s and Sacred Heart RC primary schools and pupils and teachers have picked up coding skills through the Battersea Apple Project.

The aim is to expand this and similar projects across the borough to improve digital skills in more schools.

It comes as Wandsworth Children’s Services has received a good rating from schools watchdog Ofsted - its highest rating in eight years. Inspectors praised the council for being



New offices: Simon Hogg (L) with Apple executives and Mike Jackson, Wandsworth’s Chief Executive.

committed to improving the lives of children, providing the right support at the right time and putting children at the centre of its ethos and approach.

This includes the work of social workers working with families, support for children in care and youth services.

Find out about the support available to Wandsworth families, including for children with disabilities, on our Family Information Service. **Visit wandsworth.gov.uk/fis**



Students from St Mary’s learn digital skills with Apple.

WANDSWORTH

FUTURE STREETS



Wandsworth Council's Future Streets campaign will mean everyone can access better, more sustainable travel – all for the same low council tax.

The borough's 100th bike hangar has been unveiled, with a target of installing 300. Each holds six bikes so that will give up to 1,800 people secure on-street cycle storage. You can find out more and apply for a hangar at [wandsworth.gov.uk/bikehangars](https://www.wandsworth.gov.uk/bikehangars)

We're spending an extra £5m on upgraded pavements and roads, including bus and cycle lanes. This is on top of the £3.5m we had already allocated for improvements.

A comprehensive new Walking and Cycling Strategy includes a high-quality cycle route network and more School Streets. The vision is to make the streets so safe a Year 6 child could walk or cycle to school without encountering any road danger.

More electric vehicle charging points will mean people can choose greener motoring. Find out where they are at [wandsworth.gov.uk/electric-vehicles](https://www.wandsworth.gov.uk/electric-vehicles)

Clare Fraser, Cabinet Member for Transport, said:

"We want to radically increase the number of journeys made on foot, by bicycle and on public transport. This package of measures is just the beginning. We are committed to tackling congestion, improving air quality and making our roads and streets safer for all."

See details at [wandsworth.gov.uk/future-streets-strategy](https://www.wandsworth.gov.uk/future-streets-strategy)





FUTURE STREETS

TRANSFORMING TRAVEL IN WANDSWORTH

The council welcomed the scrapping of plans by TfL that would have seen the borough lose popular bus routes, including the 14 in Putney.

“We want to radically increase the number of journeys made on foot, by bicycle and on public transport.”

CLARE FRASER, CABINET MEMBER FOR TRANSPORT



Clare Fraser and active travel champion Jack Mayorcas at the unveiling of the 100th bike hangar earlier this year.



Wandsworth Councillor Kemi Akinola meets local business Chocolate Films in their new workspace.

New spaces for growing businesses

New affordable workspaces across the borough will provide co-working, office and meeting spaces to help local businesses thrive and grow.

A Start Up Wandsworth workspace has opened in York Gardens Library, with another to follow in Putney Library later this year, thanks to a partnership with the British Library.

Support available from Start Up Wandsworth includes expert-led workshops, one-to-ones with a business manager, networking events, co-working and office space. In addition, aspiring entrepreneurs, start-ups and established businesses will be able to access business resources, test new business ideas and leverage partnerships to build routes to market for new products and services.

Find out more at better.org.uk/start-up-wandsworth

The council's Affordable Workspace Fund has also helped provide affordable workspaces in the Nine Elms area, aimed at creative talent. They offer industry-standard technical facilities such as recording studios and co-working areas.

Creative businesses are invited to Chocolate Films' new video production studios – find out more at nineelmsstudio.com – and music facilities at World Heart Beat – worldheartbeat.org Find out about more support for local business at wandsworthenterprisehub.com



World Heart Beat: State-of-the-art music studios

Council's free jobs service notches up 10 years of success



Thousands of Wandsworth residents have found work and career training with local employers, thanks to our dedicated jobs service which maximises employment for local people.

Since it was set up in 2013, Work Match has supported over 2,100 residents into work including 684 into apprenticeships.

Work Match has forged links with local employers to help recruit residents into opportunities to work or learn within the borough. Job seekers can register to be 'matched up' with suitable roles, as well as receiving pre-employment training, interview coaching, guidance with applications and ongoing support once they find work. Tailored support during the recruitment process helps employers to find the right candidates with an emphasis on hiring local talent where possible to reduce travel time and encourage greater job satisfaction.

Over the years Work Match has worked with a wide range of businesses including Cineworld, Battersea Power Station, Sainsbury's, Mace, charities, restaurants and over 1,500 high street and independent shops. The council also secures a local employment commitment from developers and construction sites as part of their planning consent to ensure that residents can access new vacancies opening up.

Get in touch or find jobs at wandsworthworkmatch.org

Daniel, apprentice carpenter from Putney said:

"I was unemployed when I signed up with Wandsworth Council's Work Match and needed some advice on how to find work. I wanted to be an apprentice carpenter and they were so helpful with providing details and how to apply. It means so much to have this opportunity - it's great that the council is helping people to get trained on the job."



Wandsworth resident Anta found a job with AIM Solutions after looking for work for six months. Anta said:

"The help from Work Match meant a lot as they helped me enhance my CV and prepare for interviews. I really felt supported throughout the whole process and even after getting a job their support was still there."

Timeline

2013
Wandsworth Work Match opens its doors.

2013
Construction of the Riverlight development on Nine Elms Lane was the first to recruit local unemployed people into apprenticeships and work placements. More developers then signed up including at the Ram Brewery in Wandsworth Town.

2016
Work Match placed its 500th candidate into a new role

2018
Work Match marked its 5th birthday with finding work for its 1,000th candidate

2019
New office opens on Falcon Road, SW11, for the recruitment service to link up hundreds more residents to local businesses.

2020
Advisors worked online throughout the COVID-19 lockdowns, matching local people to available vacancies and online training.

2021
1,000th Wandsworth resident into a local construction industry role.

2022
2,000th local person supported to start work

2023
10 years celebrated – with over 2,150 residents into local jobs and 1,800 trained.



Making Wandsworth more sustainable

Our food waste trial is being trebled in size so more people can take part.

Around 2,000 households in Southfields already have separate weekly food waste collections. The waste is sent away to be turned into biogas that's fed into the National Grid.

Now another 4,400 homes will be included, including for the first time some high-rise flats and a local school.

Areas covered include Bedford Hill, the Balham Hill Estate and Andrew Reed House in West Hill. The council also hopes to trial new ways of helping estate residents recycle, starting with Keevil Drive, also in West Hill.

Residents are also urged to waste less food in the first place. Get tips on reducing waste at lovefoodhatewaste.com

It's all part of ambitious new targets to make Wandsworth a net zero borough by 2043. Delivery of the Wandsworth Sustainability Strategy is being stepped up, with a focus



on the most vulnerable people and areas most at risk, including schools.

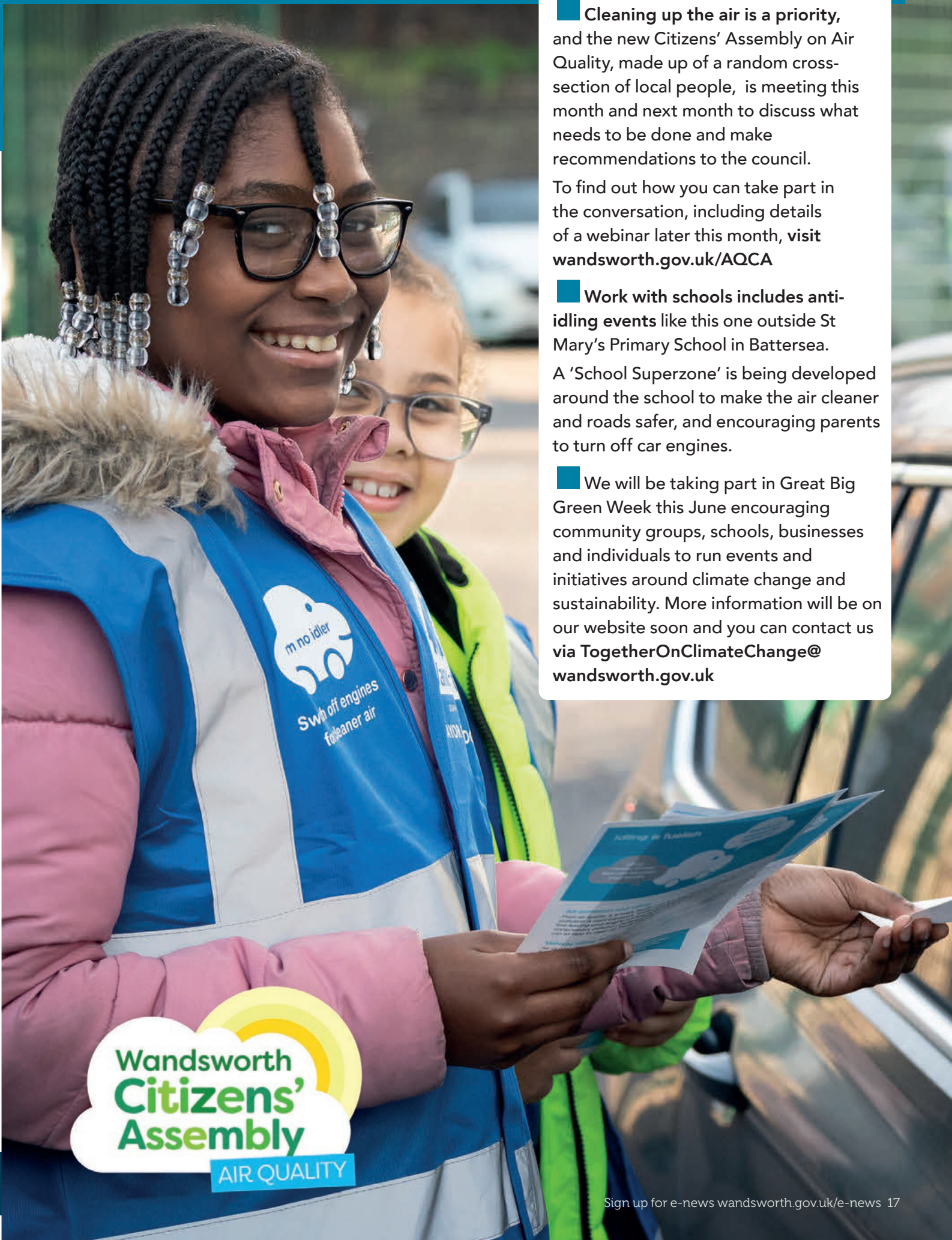
Last year Wandsworth became the first inner-London authority – and one of only 122 cities and towns worldwide - to achieve a place on the CDP Cities A list for action on climate change.

Other work includes encouraging sustainable travel (see page 12), decarbonising council buildings and vehicles and increasing biodiversity.



■ The shire horses will be back in Wandsworth parks this summer as part of council contractor Enable's work with Rewild London. They help create wildflower meadows and woodlands to increase biodiversity.

The council is also asking local people to help it meet its goals set out in the Wandsworth Biodiversity Strategy. Volunteers are needed to help record the borough's flora and fauna to better understand what wildlife the public sees every day, and where in the borough these species are. If you are interested in taking part, email biodiversity@enablelc.org



Cleaning up the air is a priority, and the new Citizens' Assembly on Air Quality, made up of a random cross-section of local people, is meeting this month and next month to discuss what needs to be done and make recommendations to the council.

To find out how you can take part in the conversation, including details of a webinar later this month, visit wandsworth.gov.uk/AQCA

Work with schools includes anti-idling events like this one outside St Mary's Primary School in Battersea.

A 'School Superzone' is being developed around the school to make the air cleaner and roads safer, and encouraging parents to turn off car engines.

We will be taking part in Great Big Green Week this June encouraging community groups, schools, businesses and individuals to run events and initiatives around climate change and sustainability. More information will be on our website soon and you can contact us via TogetherOnClimateChange@wandsworth.gov.uk



Upgrades for homes

People who live in nearly 200 homes on Wandsworth's Arndale estate will get new kitchens and bathrooms as part of the council's ongoing programme of upgrading its housing stock.

In a separate scheme, residents of the Lochinvar estate in Balham will shortly benefit from a lift refurbishment programme, while some blocks on the Alton estate in Roehampton will have enhanced safety and security from upgraded entrycall systems.

Meanwhile preparations are in hand for an initial phase of works at Earlsfield's Henry Prince estate which will deliver upgraded roofs and windows and external decorations to a number of blocks.

Aydin Dikerdem, cabinet member for housing, said: "The council is investing in local housing estates to ensure that our residents live in really good quality accommodation."

“The council is investing in local housing estates to ensure that our residents live in really good quality accommodation”

AYDIN DIKERDEM,
CABINET MEMBER FOR HOUSING



Artists from African, Caribbean and South Asian heritage invited to contribute to the cultural agenda of the borough.

Wandsworth will be developing a programme of events for South Asian Heritage Month in August and has an ongoing Black History 356 programme.

Artists and organisations can find out more from our arts team. Visit wandsworthart.com

The picture shows 2022 Diwali celebrations in Tooting.



Transforming mental health services

The new Trinity building at Springfield Hospital in Tooting is now open and is home to four inpatient wards as well as outpatient services for adults and young people.

Trinity is part of the new 'Springfield Village' landscape opening up over the coming years which will include new homes, a new 32-acre park, shops, a public square and improved hospital facilities. The new Shaftesbury building will follow in the summer and together with Trinity makes up a £150m investment in local mental health services.

The council is also working to improve the mental health of local people and reduce inequalities, including more support within schools, a new mental health impact assessment, an updated Suicide and Self-harm Prevention Strategy and working with the NHS to ensure everyone has access to community mental health hubs.

If you need mental health support in a crisis, you can call the 24/7 Crisis Line on 0800 028 8000

WORRY-FREE LEASING

Let your property through the council



Find out more go to:
[wandsworth.gov.uk/landlords](https://www.wandsworth.gov.uk/landlords)



Get creative with your health

Wandsworth's Arts for Health and Wellbeing Fund supports projects that use art and creativity to help people's mental and physical health.

One recipient, Breathe Melodies for Mums, will run in Nine Elms and Roehampton children's centres in the autumn and next spring.

It's part of work to make the borough fairer and reduce health inequalities. Other measures include more support for carers and people experiencing domestic abuse and an increased focus on mental health.

Find out about Arts for Health and Wellbeing and other social prescribing projects at wandsworthart.com/arts-for-health-wellbeing



TYPE 2 DIABETES KNOW YOUR RISK

Finding your risk of Type 2 diabetes only takes a few minutes. It could be the most important thing you do today...

Check your risk online at nhsdp.org.uk/c/wandsworth



Wandsworth
Clinical Commissioning Group

Source: Public Health Annual Report 2016 - Diabetes in Wandsworth

Every week 15 people in Wandsworth are told they have diabetes



15,000 residents are living with the condition...



...and another 25,000 are on the verge of getting it.



TC2469 (Rev 02/19)

NIGHT TIME, OUR TIME

A Night Time Strategy for Wandsworth

Share your views on a one-of-a-kind Night Time Strategy setting out how the council can improve the night time for all.

The draft strategy covers the hours between 6pm and 6am across the borough and is categorised into People, Place, Economy and Transport.

We listened to local people during our previous consultations, including your views on safety and lighting, night workers and young people. We have taken this feedback and put together a list of recommendations under each category. Let us know if we have addressed your concerns and aspirations.

To read the Strategy and our recommendations, go to [antswandsworth.commonplace.is](https://www.antswandsworth.commonplace.is) where you can tell us whether you agree, or if there is anything more you think we should add.

The consultation ends on 14 May.



Find out about fostering

Join an information event on April 13 and find out if a career as a foster carer is for you.

Wandsworth Fostering
#lovetofoster

Foster Carers are ordinary people who provide something extraordinary to the young people they look after. Carers are especially needed to provide a temporary or permanent home for teenagers.

You don't need any formal qualifications and the council's specialist fostering team provides comprehensive training timed to suit you around school picks ups, drop offs, evenings and weekends.

To register your place on the information event

- Email fosteringrecruitment@wandsworth.gov.uk
- Call for free on 0808 175 3327
- Fill in the form on fostering.wandsworth.gov.uk
- Message the team through the Fostering For Wandsworth Facebook page.



SPORTING STARS

People, clubs, coaches and volunteers who have achieved outstanding success in sport and fitness have been honoured at this year's Active Wandsworth Awards. The Sports Person of the Year Award was awarded to volleyball champions Javier and Joaquin Bello.

Other winners included **Spencer Lynx hockey club**, **Smallwood Primary School**, **STORM** and the **Wandsworth Amateur Swimming Association's Disability Swimming Supported Family Swim Programme**.



Has your child received all their immunisations?

Childhood immunisations are your child's best chance of being protected against infectious diseases and have been routinely given to children for over 80 years.

The MMR vaccine is a safe and effective combined vaccine. It protects against three highly infectious and serious illnesses (measles, mumps and rubella). It's given in two doses (at 1 year old and then at 3 years and 4 months old).

And the best way to prevent polio is to make sure your child is up to date with their vaccinations.

You can also contact your GP surgery to check if your child is up to date with polio vaccinations. For children and babies, you can also check their personal child health record (red book).

For more information on immunisations, visit wandsworth.gov.uk/immunisation

Come and chat about your health

Our health bus has been out nearly 60 times giving residents the COVID-19 vaccines, the flu jab as well as health advice, free blood pressure checks and advice on stopping smoking.

Front lines workers have also benefited from free lateral flow tests to keep them, their families, their colleagues and the wider public safe.

For advice and information on ways to look after your health, which includes diet and exercise tips, advice on preventing diseases like diabetes and heart disease, along with information about cancer screening programmes and sexual health advice, visit wandsworth.gov.uk/publichealth



How to keep your home safe

Wandsworth
Community Safety
Partnership



The Police and the council's Community Safety team are working together to reduce burglary. Police officers patrol hotspot areas, target known offenders and give out crime prevention advice and property marking kits. Neighbourhood Watch has also been relaunched.

Every victim of burglary will now be visited in person by a police officer and residents living close by to a burglary will be spoken to and offered crime prevention advice.

Although there has been a 17 per cent year-on-year decrease in burglary in Wandsworth, it is important to be aware of how best to keep your property secure. Here's some advice from the police.

KEEP IT VISIBLE

- At the front of your home keep hedges, fences and walls under one metre high
- But at the rear and sides, fencing 1.8m high is recommended to prevent easy access
- Trellis, thorny plants, or a suitable anti-climb topping such as plastic spikes make it difficult for anyone climbing over a fence or gate

LOCK IT

- Always double lock the door and use a mortice lock, even if only popping out
- Windows are often targeted as they are easier to get in than doors. Check windows from the outside and remove potential points of access such as bins or garden furniture
- Lock windows. If they are sash, get proper locks. Don't forget upstairs windows are also vulnerable

ALARMS

- Consider an accredited burglar alarm system. Two audible alarms, at the front and rear of the house, and placed high up to prevent tampering are recommended

CCTV

- Doorbells fitted with a camera, such as Ring doorbells, are effective
- If considering CCTV, seek advice from an accredited installer to ensure you comply with legislation
- Remember that CCTV can be a valuable tool but is no substitute for good quality physical measures

SHED

- Don't forget the shed. Keep it locked, consider an alarm and a plastic film or metal grill on the windows
- Keep tools locked away

DISTRACTION BURGLARY

Distraction burglars pretend to be someone they are not in order to gain entry to your home. They often work in teams with one person distracting you while the other searches your home.

Common excuses to get in include

- Pretending to be from a care agency, the council or a utility company investigating a gas or water leak
- Asking to leave a note for a neighbour or asking for a drink of water because they're thirsty or unwell
- Claiming there's an emergency and they need to get into your home quickly

To prevent a distraction burglary;

- Use the door viewer first, and put chain on if you open the door
- Always ask for ID and check with their company before letting them in
- Use a phone number you can find online, not the one they give you
- REMEMBER – genuine callers won't mind checks (including police)
- Don't let anyone pressure you into giving them money

Call 999 if you feel threatened or in danger



Wandsworth on film

■ The Mayor of London has written to Wandsworth Council's film unit to thank it for its 'outstanding support' to London's film industry.

The Mayor's letter comes after City Hall was contacted by executives at Warner Brothers, who had worked with the council's contractor Enable on location in Clapham Junction and Battersea Park on the film *Magic Mike's Last Dance*.

Wandsworth has long been a favourite filming location with Battersea Park a particularly popular choice for filmmakers, appearing in numerous feature films, TV dramas, adverts and publicity shoots.

The borough has been the chosen location for a range of popular drama series including *24*, *New Tricks*, *Silent Witness*, *Above Suspicion*, *Killing Eve*, *The Bodyguard*, *Not Going Out* and *The Crown*.

Films shot here include *Snatch*, *The Iron Lady* and the 1961 classic *The Day the Earth Caught Fire* – filmed in the park's funfair.

The income received from filming helps fund town hall services and keep council tax bills low – and for every pound received by the council, it is estimated that another two pounds is generated for the local economy.

To find out more visit www.wandsworth.gov.uk/film



Top to bottom: *Magic Mike* locations included the Grand in Clapham Junction, *One Direction* filming in Battersea Park, *The Day the Earth Caught Fire*



Get off the sofa!

Want to get more active?
Here are some ideas.

■ **Guys Get Active** is free 10-week healthy lifestyle programme for men that want to improve their nutrition and fitness, lose weight and make lasting lifestyle changes.

You'll get one-to-one consultations with registered nutritionists and plus a mix of in-person and virtual activities including social football, circuit training, and strength training. You'll also get free access to Wandsworth Council gyms during the ten weeks.

The programme is free and rolling, so you can sign up online anytime.

You must be 18 or over and be live or work in Wandsworth, or be registered with a Wandsworth GP. You should have a BMI of 25+ and/ or related health conditions such as high blood pressure, high cholesterol, Prediabetes or Type 2 Diabetes. Visit enablelc.org/guysgetactive

■ Young people aged 7-18 are invited to try out for Team Wandsworth in the 2023 **London Youth Games**.

Europe's largest youth multi-sports competition is contested between all the London boroughs with around 50 events at various venues over nine months, including the Olympic Park and Aquatics Centre. Sports include badminton, athletics, judo, rowing and archery as well as Para sports. Previous participants include Mo Farah, Raheem Sterling and Dina Asher-Smith.

To register your interest to compete, visit enablelc.org/lyg. If you have any questions email galleyne@enablelc.org

■ If you love walking and are friendly and welcoming with good communication skills, you can volunteer to become a **Wandsworth Walk Leader**. You'll get full training and ongoing support.

To find out more email activelifestyles@enablelc.org

Walk Wandsworth are free group walking sessions on Wandsworth Common, Southfields, Wimbledon Park and Battersea Park. If you want to go on a walk, **find out more at enablelc.org/walkwandsworth**

WHAT'S ON?

Hate Radio

19-22 April

Almost 30 years on from the Rwandan Genocide, award-winning dramatist Milo Rau explores whether a radio broadcast can fuel massacres.

Battersea Arts Centre
bac.org.uk





Wandsworth Connected

Wandsworth Connected is for young people and families in receipt of benefit-related free school meals. Enjoy activities and services during the Easter Holidays, including a nutritious meal and a fun physical activity every day. Activities last for a minimum of 4 hours per day and for at least four days over the Easter holidays and young people can access multiple activities as long as they do not overlap.

Search for "Easter HAF" on the Wandsworth Family information service website - wandsworth.gov.uk/fis



Eugenius

17 March- 28 May

A thrilling high-energy 80s-inspired British musical.

Turbine Theatre, Battersea
theturbinetheatre.com



Wandsworth Art Markets

April 1-2

Pop-up art markets will be appearing in New Union Square, Nine Elms, St Mary's Church Square, Putney and All Saints Church, Tooting from 1pm-5pm.

Browse the work of local artists and makers, enjoy free arts and crafts workshops and take part in a series of art trails.
wandsworthart.com

Women's Enterprise Day

29 March

Guest speakers, motivational talks and interactive workshops plus a networking lunch.

Thames Rowing Club,
Putney Embankment
wandsworthenterprisehub.com

Stray Dogs

14 March-1 April

What would you risk to build a better world?

Theatre 503, Battersea
theatre503.com

Free Digital Support

Every Thursday, 10am-noon

Get questions answered or problems solved for your laptop, tablet or smart phone including help with creating or accessing email accounts, password recovery, running updates, installing apps and filling in forms and more.

Tooting Library,
75 Mitcham Road

Vague Poetics

15 March-16 April

A new body of work by Carolyn Thompson
Matt's Gallery, Nine Elms
mattsgallery.org

Affordable Workspace Preview

30 March, 9.15am-1.30pm

Find out about new affordable workspaces at New Mansion Square, Battersea and the support offered to local start-ups and entrepreneurs in the tech and creative industries.

ROSE Clubroom,
Ascalon Street, SW8
Email businessready@peabody.org.uk

Barn Elms Sport Centre Easter Camp

April 3-7 and April 10-14

Football, tennis, beach volleyball, archery and more
020 3959 0055, besc@enable.org

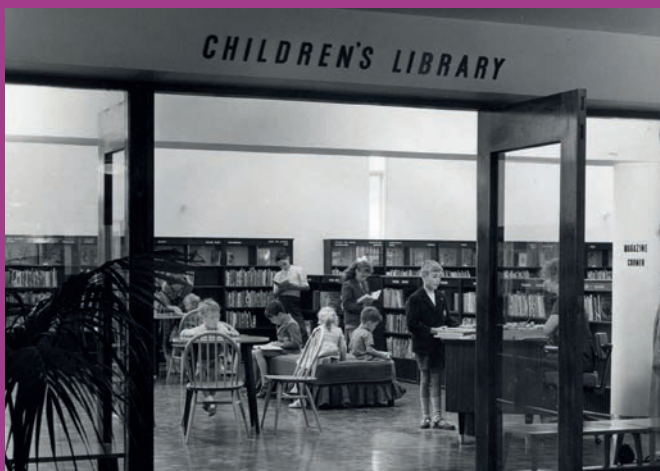
WHAT'S ON?

Wandsworth Arts Fringe

9-25 June

The borough's flagship arts festival is back, with music, dance, theatre, comedy, arts, performance and more at venues across the borough. See a full programme of what's on and buy tickets from April 26.
wandsworthfringe.com





Wandsworth Heritage Festival

20 May - 11 June

Due to public demand this year's festival has been extended to three weeks and the theme will be Educating Wandsworth. Enjoy walks, tours, talks and exhibitions. The festival is organised by the Wandsworth Heritage Service with the support of many contributors from the community.

better.org.uk/library/London/wandsworth-heritage-service

Get Set Go 2023

27 April 1pm-6pm

It's back! Wandsworth Council's event to help young people with SEND prepare for adulthood.

Meet providers from a host of sectors, including education, employment, housing, day services and activities. There will also be fun things to do and a chance to win prizes.

Wandsworth Civic Suite.

If you have any questions or are a provider and wish to sign up, email getsetgo2023@wandsworth.gov.uk



Spring Craft Fair

15 April, 10am-4pm

Including children's activities

Battersea Library, Lavender Hill
020 7223 2334

Single Use Planet

17 April - 5 May

See the work of borough schoolchildren who have been exploring the issue of single use plastics through art, let by artist Blake Joshua. The project is facilitated by Wandsworth Council and the Royal College of Art in partnership with Kids Against Plastic.

Southside Shopping Centre

Free Art Talk

18 April, 6pm

Explore the art and world of the French Impressionists.

Battersea Library, Lavender Hill
020 7223 2334

The Welkin

25-29 April

An eighteenth century murderer's fate lies in the hands of 12 women

Putney Arts Theatre
putneyartstheatre.org.uk

Wilf Diamond Quarter and ramnaxtax

4 May

The trombonist, pianist and improviser, will play original material with his new quartet.

World Heart Beat, Battersea
worldheartbeat.org/whats-on

Millennium Arena Easter camp

3-14 April

Enable's Easter holiday camp is full of fun multi-sport activities, creative games, arts and crafts. Suitable for ages four to 11 of all abilities. £22.50 a day or £90 for the whole week.

Call 07511 702074 or email hgethins@enablelc.org

Phenomenal Fishponds history walk

22 April, 2pm

Transport yourself back to the 1850s and follow a path through 'The Green Fields of Blooming Tooting' in search of the historic lost nursery.

Meet at the statue in front of Tooting Broadway Tube Station
eventbrite.co.uk/e/phenomenal-fishponds-tooting-history-walk-tickets-494385328827

Civic Celebration of Community

14 May

Join the Mayor of Wandsworth Jeremy Ambache in a celebration of local organisations and communities supporting and helping each other through difficult times.

Email mayors.office@wandsworth.gov.uk to find out how to get involved.



Water Play at Latchmere

Latchmere Leisure Centre has a new toddlers and under 8s water play feature with water jets, water channels, handwheels, fill'n'spill buckets, mirrors and a fish shaped shower arm together with a new toddlers' water slide.

placesleisure.org/centres/latchmere-leisure-centre

Walk and Talk

Every Saturday, from 10.30am

Everyone is welcome to join free Walk and Talks. Stroll around Tooting Bec Common, chat and make new friends. It's run by the Walk and Talk movement with funding from Wandsworth Council.

Meet outside the Tooting Bec Common Café
Email wandsworth@thewalkandtalkmovement.org for details.

Could you host a Ukrainian family this year?



Wandsworth Council is looking for more hosts to support Ukrainian guests in Wandsworth, under the government's Homes for Ukraine scheme.

New hosts are needed to help support Ukrainian guests whose original sponsor is no longer able to provide accommodation for them – for reasons such as moving away or family ill health.

We are particularly looking for households with space for more than one adult or groups with children, but single rooms are also welcome.

Hosts Andrew Brook and Donald Smith said:

“We’re finding it an incredibly rewarding experience to share our home with our guests and when they return home to Ukraine we will miss them greatly.”

Can you help?

- You must be able to host for at least six months
- Accommodation could be anything from a spare room to an unoccupied home
- Guest must have access to kitchen and bathroom facilities
- Accommodation must be safe, heated and free from health hazards
- If you are successfully matched, hosts are offered a £350 per month 'thank you' payment, once all relevant checks have been passed.

The council and our partners provide complete wrap-around support for your Ukrainian guests, meaning you can focus on helping them settle and feel at home.

To find out more and register, visit [wandsworth.gov.uk/become-a-host](https://www.wandsworth.gov.uk/become-a-host)

If you have any questions email the Wandsworth Homes for Ukraine Team homesforukraine@wandsworth.gov.uk



Doing it online

Using our website helps keep your council tax bills low

Report a waste problem

wandsworth.gov.uk/waste

Request a housing repair

wandsworth.gov.uk/housingonline

Search planning applications

wandsworth.gov.uk/planningregister

Report a street problem

wandsworth.gov.uk/streets

Apply for a school place

eadmissions.org.uk

Book an MOT

wandsworth.gov.uk/MOT

Report noise and nuisances

wandsworth.gov.uk/noise

Apply or renew a parking permit

wandsworth.gov.uk/parkingpermits

Report graffiti for removal

wandsworth.gov.uk/graffiti

Report an abandoned vehicle

wandsworth.gov.uk/abandonedvehicles

Tell us if you are moving in or out of Wandsworth

wandsworth.gov.uk/MIMO

Enquire about your housing options

wandsworth.gov.uk/housingoptions

Pay it online

It's now easier to pay online at wandsworth.gov.uk/payments

Pay your council tax

wandsworth.gov.uk/paycounciltax

Pay a parking fine

wandsworth.gov.uk/parking/payment

Pay your rent

wandsworth.gov.uk/rents

Pay for a marriage or civil partnership ceremony

wandsworth.gov.uk/ceremonypayment

Pay your business rates

wandsworth.gov.uk/paybusinessrates

Pay a waste or littering penalty

wandsworth.gov.uk/waste-enforcement

Talk to us online

weekly e-newsletter

wandsworth.gov.uk/enews



facebook.com/wandsworth.council



twitter.com/wandbc



instagram.com/wandsworth_council

My Account

Create an account and you will only have to sign in once to access the main council services.

wandsworth.gov.uk/myaccount

Other contacts at the council

Adult Social Services

(020) 8871 7707

Births, Deaths, Marriages and Voting Hotline

(020) 8871 6120

Early Years and Childcare Hotline including Family Information Service and After School and Holiday Play Centre bookings

(020) 8871 7899

Environmental Services

including noise, pest control, private housing and licensing
(020) 8871 6127

Finance Hotline including benefits, council tax, rents and business rates
(020) 8871 8081

Housing Hotline including housing management and repairs, service charges, home

ownership, homelessness and housing advice

(020) 8871 6161

Parking and Streets Hotline including concessionary travel, blue badges, MOTs, highways and skip licensing and bay suspensions

(020) 8871 8871

Planning and Building Control hotline including Community Infrastructure Levy (CIL), land searches and street naming and numbering
(020) 8871 7620

Schools and Admissions
(020) 8871 7316

Waste Hotline including rubbish, recycling and litter
(020) 8871 8558

Hundreds of Jobs • Real Opportunities • Meet Top Employers

EMPLOY WANDSWORTH 2023

Jobs Fair

Friday 26 May • 10am - 3pm

Retail • Construction • Customer Service • Green Skills



Facilities Management • Leisure & Hospitality • Tourism

Civic Suite, Wandsworth High Street, SW18 2PU

Beat the queues, reserve your place at:



www.employwandsworth.org

#EmployWandsworth

