

ALTON

ROEHAMPTON SW15

ALTON NEWS

Spring 2023

Issue 34

www.AltonEstateRegen.co.uk

Twitter: @AltonMasterplan

www.wandsworth.gov.uk/Roehampton

**REGENERATION OPTIONS
REVIEW - UPDATE**

**CHILDREN'S LAUREATE
FROM ROEHAMPTON**

**MEANWHILE USE
ON THE ALTON ESTATE**

**OUR NEW CHILDREN'S
LIBRARIAN**



OPTIONS REVIEW FOR THE ALTON ESTATE REGENERATION



Community engagement on options to improve the Alton Estate started in January when Inner Circle, the council's appointed consultant, and the Alton Regeneration team, hosted a series of local events.

Since their appointment in November 2022, Inner Circle has met with a number of key figures within the council and has now undertaken the first stages of community engagement.

The Roehampton community was asked to share their priorities and thoughts on what areas should be considered in the development of options for a future regeneration of the Alton Estate via a survey which was distributed to over 4,500 residents across Roehampton and two drop-in events which were held at Roehampton Library and Portswood Space.



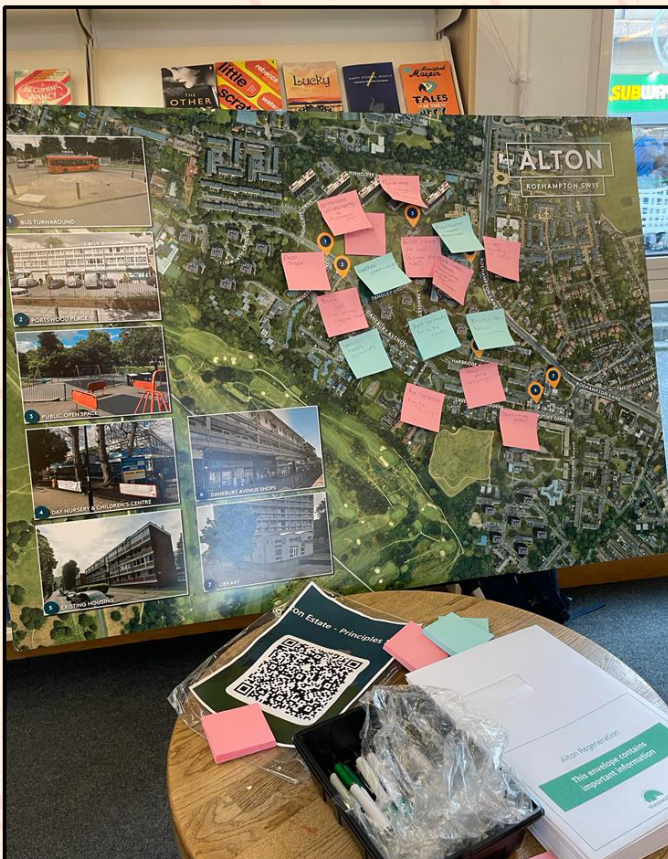
In addition to this, roundtable discussions with key stakeholders from the community took place in February to discuss matters ranging from accessibility to community safety and from homes to facilities on the estate.

Thank you to everyone who participated in our drop-in and round table discussions and who shared their views via the survey. Approximately 80 adults attended the events, and more than 400 survey responses were received. The results and comments are currently being reviewed and will shape the options that will be presented to the Roehampton community later this year.

Over **400** survey forms completed and returned

Around **50** attendees to the public drop-in events

30 attendees to the round table discussions



ENGAGEMENT AT DROP-IN EVENTS



To enable parents and carers to take part in our drop-in events in February, we offered free refreshments and crafting activities for children, including basket weaving and bookmark designing using scratch art. Over 90 children joined us at the crafting table across the two days and shared their ideas for estate improvements. We love the idea of a trackless train or a zip wire across the estate!



Joseph as a child on the Alton Estate

INTRODUCING THE CHILDREN'S LAUREATE FROM ROEHAMPTON



Waterstones Children's Laureate, Joseph Coelho, remembers his childhood growing up in Roehampton and the impact it had on his writing

"Roehampton has had a lasting impression on me. Growing up in Binley House in the 80's, I was always wowed by the view from my window. I could see for miles, and in every direction - green - and our blocks dotted amongst that greenery, like they had grown out of the land.

My friends and I walked to school and played out together from quite a young age (it was a different time) and it felt like there was always an adventure to be had, be it traipsing down to the Pen Ponds (I only fell in once) or rambling over the commons. Our bikes took us all over - up to Wimbledon Common and the windmill searching out the famed natural spring, or to the Bushey Park playground, or to the blocks of our friends where we'd play games like 'Run Outs' (one team must knock down the other team's pyramid of old cans) or 'Pat Ball'

(patting an old tennis ball against a wall). In Autumn, we collected bin bags full of conkers for school projects. In Winter, in lieu of toboggans, we used whatever we could find to slide down the snow-covered hills. In Spring, we'd search for tadpoles and the promise of frogs. In Summer, we'd marvel at the size of grounded stag beetles and listen to tales of the year when there was a plague of them.



I went to Danebury Primary school, now long gone. I recall my teacher telling us that the plans for the school were held upside down by the builders, so instead of a school on a hill that led down to the playground, we had a playground on a hill... that flooded the school. There was a thicket of brambles at the back of that playground through which we found thorned tunnels, to our teacher's dismay.

The Summer Fair on Danebury Avenue was always a highlight... I often came home with goldfish prizes from the

stalls and loved looking out for The Rat Catcher - a gentleman dressed as a rat catcher complete with cages and of course... rats!

The statues have stayed with me too. The Watchers by Lynn Chadwick that were on view by the grounds of Roehampton University. My friends and I were scared of them; we called them the three witches and never went near them. Then there's the bull on Danebury Avenue by the bus stop; I found its huge size enthralling as a kid, begging to be ridden.

Roehampton has certainly found its way into my writing, most recently in a picture book called *Our Tower*, illustrated by Richard Johnson. In it, I was trying to capture some of the magic of the place and to challenge the idea of estates always being grim and devoid of magic. So, I have three kids follow a song they can hear from their towers to an old and magic tree, that reveals to them a magical world. I never did find that tree when I was a kid, but I could certainly hear its song."

For more information, visit: www.thepoetryofjosephcoelho.com



FONTLEY WAY DEVELOPMENT UPDATE

Following on from our Winter newsletter in December 2022, the developer on Fontley Way, Stack London, has now completed the frame for the ground, first and second

floors, the main stair core for residents, and utility connections. Stack are now hard at work completing concrete works to the third floor.



Fontley Way development site



ENGAGEMENT AT THE ALTON PLAYSCHOOL!

Late last year, Stack London reached out to the Alton Community Playschool to thank them for helping to design the hoarding around the site. Stack and their groundworks subcontractor, LF Solutions (LFS), brought some big toys for the children to play at being a builder for the morning! LFS kindly donated

hi-vis vests, hard hats and a chocolate box for all the children, and we also repurposed some pallets for them to create play equipment. Children thoroughly enjoyed sitting in the digger and tooting the horn!

Thank you again Alton Playschool!

COUNCILLOR DIKERDEM VISITS FONTLEY WAY



In January, the Cabinet Member for Housing, Councillor Aydin Dikerdem, visited Fontley Way to see the progress of the 14-unit development which will be allocated to residents on Wandsworth Council's housing list.

Councillor Dikerdem was shown around the site by a Stack London Senior Contract Manager and Wandsworth Council Project Officers. They discussed the foundations of the building, concrete pour, UKPN's electrical installation and the upcoming window installation.



Councillor Dikerdem on site

News from the Housing Development Team

HOMES FOR WANDSWORTH PROGRAMME UPDATE

We are currently looking at proposals to develop land at Bessborough Road and land adjacent to Farnborough House on the Alton Estate, as part of the Homes for Wandsworth programme.

The identified areas present an opportunity to develop unoccupied or underutilised spaces on the Alton Estate. We are currently considering ideas to develop the spaces to provide much-needed new council rent homes that will help meet the needs of our Wandsworth residents now and for generations to come. We are also exploring opportunities to improve landscaping, play space and shared amenities for residents of the estate.

In November 2022, a public drop-in was held with the local community to involve residents in our initial thinking and ideas for the spaces. Thank you to everyone who took the time to get involved and engage with us. Your thoughts, suggestions, and feedback are important to help us develop and shape our plans.

We are now considering all feedback received as we look to develop detailed plans for the sites. We are keen to take on-board and address all concerns, questions, and queries where possible in the development proposals and look forward to sharing more detail with you soon. We hope to share our detailed design and obtain further feedback at a public



exhibition later this Spring. In the meantime, visit our website to find out more and sign-up to our mailing

list for project updates: www.bessboroughroad-farnboroughhouse.co.uk

29 Attendees to the public drop-in

19 Feedback forms completed and returned

257 Unique visitors to the consultation website

MEANWHILE USE ON THE ALTON ESTATE



Before



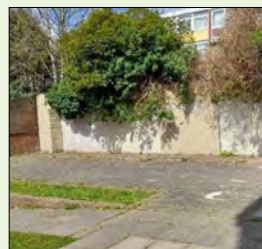
After



Before



After



Before



After



Meanwhile Use refers to a short or medium-term beneficial use of temporarily empty buildings or spaces. Examples on our very own Alton Estate would be 'Portswood Space' and the 'Alton Arts Hub' at 4 and 6 Portswood Place, or the transformation of 'Harbridge Square'.

You may have seen the Regeneration team promoting our Meanwhile Use survey to gather your ideas and opinions on what Meanwhile Use projects you would like to see on the estate.

We had a fantastic response from the survey, so thank you to everyone who took the time to complete it.

You are helping to shape the future of Meanwhile Use on the Alton estate!

The area around the old Co-op block, which sits on the corner of Danebury Avenue and Roehampton Lane, is currently being considered for future Meanwhile Use projects following the success of the pop-up gallery, which was delivered by the Alton Regeneration team in collaboration with Estate Art. As one of the key gateway sites to the Alton estate, proposals for this space centre around making the area more visually attractive, usable, and welcoming.

All respondents to the Meanwhile Use survey expressed their interest in seeing some gardening and nature projects. In response to local interest, the Roehampton Community Shed generously volunteered its time and skills to construct and paint some benches with attached planters, made from wooden pallets which were rescued from nearby construction sites.

On a very windy January afternoon, the Regeneration team was joined by fantastic volunteers from the Roehampton Community Shed and Alton Greened gardening group, led by the Housing Community Champion, Vicky Pigott, to assemble the benches at Danebury Avenue and

plant them with some lovely, colourful flowers! We've already had lots of positive comments from those of you who have been enjoying the plants and using the benches as an opportunity to rest and admire the artwork.



Please pop down and test them out yourself, if you haven't already!



You may have also noticed the lovely bunting at Portswood Place and at Danebury Avenue which has added another pop of colour to these areas.



The bunting was made by Manresa Sheltered Housing resident, Sandra, who used a combination of new and donated fabric to create it!

What's next...

We propose to install outdoor lighting around the front of the old Co-op block and the undercroft area (where the Jubilee mural is), which will improve visibility at night-time and in the early morning, as well as illuminating the pop-up gallery. Our contractor on the Fontley Way development site, Stack London, has kindly offered to fund and undertake this project. Results from the survey showed strong support for functional enhancements, including wall mounted lighting, and we hope you agree, this will be a positive improvement to this area!

With help from you, the Regeneration team is continuing to propose more Meanwhile Use initiatives for the Alton estate. Our survey showed a high level of community support for projects involving upcycling, recycling and sustainability. Therefore, we are looking to create a sustainable living wall behind the old Co-op block using recycled tin cans. We are also hoping to extract bathtubs from empty properties above the former Co-op, and transform them into freestanding planters which, with the help of Alton Greened community gardening group and local volunteers, will be planted with flowers to brighten up the paved areas.



We are also proposing to add a lick of paint to the walls and steps around this same area, as a way to refresh and clean up the space.

The survey also showed a lot of local support for additional street signage and community art and cultural projects; so, we are planning to develop some Meanwhile Use proposals around these themes too.

We'd love to hear from you!

We are continuing to develop exciting ideas for future Meanwhile Use arts projects and would love to hear from you if you want to be involved! Please contact us by email: Roehampton@wandsworth.gov.uk



COMMUNITY ENGAGEMENT QUARTERLY ROUND UP

Over the past few months, the Alton Regeneration team has been involved with a full and varied programme of events and activities on the Alton estate, including:



AN ALTON COUNTDOWN TO CHRISTMAS

Roehampton was treated to an advent calendar of Christmas events leading up to the big day. The Regeneration Team ensured that there was something for everyone as it spread festive cheer!



TREE-MENDOUS LIGHT SWITCH-ON AND LANTERN PARADE!

On 30th November, local schools joined in the annual Lantern Parade and pupils proudly revealed the beautiful lanterns they had decorated for the event. They were joined by residents of all ages who had come to watch the Mayor of Wandsworth, former local ward councillor Jeremy Ambache, switch on the tree lights to signal the start of Christmas.

After a jovial countdown from 10 to 1, the lights twinkled in the darkening sky and remained lit throughout December. The crowd was entertained by Claire, a sensational local opera singer, who led a festive sing-along of well-known Christmas classics.

The Roehampton Community Shed had kindly cut 150 wooden baubles which residents decorated to be hung on the tree. It was lovely to see young children squeal in delight when they spotted their bauble!

We may be biased, but we think you'll agree, the Roehampton tree really was the most beautiful tree in the borough this year!





MERRY CRAFT-MAS!

The week before schools broke up for Christmas, we treated families to a taster 'Crafternoon Tea' session (more information about Crafternoon Tea can be found on page 12 of this newsletter).

Children and adults enjoyed making and decorating door hangers to ensure Santa knew where to leave their presents. After all that crafting, festive cupcakes and hot chocolate went down a treat.

We're sure Father Christmas was delighted when he spotted the handmade signs outside bedroom doors around Roehampton!

CHRISTMAS IS ALWAYS A CLAUS FOR CELEBRATION!



For the second year running, we hosted the Roehampton Christmas Market, with the help and support of the local community. Santa took pride of place on his throne in a magical grotto at the Alton Arts Hub, created by Sarah Forrester, a retired Children's Services lead who had been based in Roehampton. Over 120 children visited the grotto, which was run by the Putney Rotary Club. The club had also generously donated wrapped gifts for Santa to give out.

In Portswood Space, families enjoyed a variety of free arts & craft activities, including bauble and card making.



Entertainment was provided by the Jingle Bell Singers, and a choir lead by Deacon Kathy from the Methodist Church.



This Christmas, over 20 stalls took part in the market, mostly run by local residents selling a range of homewares, crafts, sweet treats, jewellery, candles and clothing.

Once again, there was a great choice of food on offer including Filipino, Caribbean, Indian and take away items from the Over 60's Café.

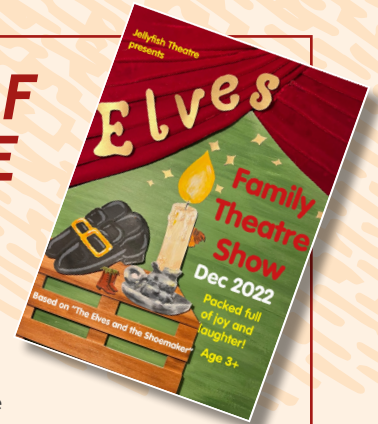
The money raised from stall hire was split equally between two local charities - the Foodbank and Little Village - who provide much needed support to our community.



COMMUNITY ENGAGEMENT QUARTERLY ROUND UP (CONTINUED)



HAVE YOUR-ELF A MERRY LITTLE CHRISTMAS!



During the Christmas School holidays, Roehampton was visited by some unruly elves when Jellyfish Theatre brought its interactive retelling of *The Elves and the Shoemaker* by the Brothers Grimm to a packed-out Alton Activity Centre. The kids sang along and shouted out with glee as a dog, a very large mouse, elves, and magic dancing boots all appeared to entertain them.

The afternoon concluded with a tasty tea party, hosted by Jo from the Regen Team and Orode from the Activity Centre.

Jellyfish Theatre will be bringing its outdoor retelling of *The Jungle Book* to the Alton Estate in the Summer.

If you would like to be notified of future family events, please email: jo.baxter@richmondandwandsworth.gov.uk



PROSECC-HO-HO-HO AND A FESTIVE PANTO!



We joined forces with the officers at the Manresa Sheltered Housing Scheme to put on one big Christmas event for the over 55's this year. Rah Rah Theatre performed its panto, *Cinderella*, which received a lot of friendly heckling, laughter, and banter from the audience.

After the performance, everyone tucked into a festive buffet and a drink or two.

If you would like to be notified of future events for the over 55's, please email: jo.baxter@richmondandwandsworth.gov.uk



BLOOMING IN SPRING



It wouldn't be half term without a planting activity!

During February half term, Alton Greened, led by local volunteer Vicky Pigott, held a planting session focusing on revitalising the planters at Harbridge Square. They were weeded, topped with fresh soil and replanted with rose bushes and colourful primroses that will flower throughout Spring. If you pass by, feel free to weed and water them.



Calling all
gardening
enthusiasts!

If you are interested in getting involved with community gardening projects on the Alton Estate, please contact vicky.marie.pigott@gmail.com and jo.baxter@richmondandwandsworth.gov.uk

MORE LION-EL MISSING THAN LION-EL MESSI



This friendly lion was handed in at the Christmas Market on 3rd December.

Despite extensive social media appeals, we have yet to reunite him with his owner. Maybe this was the missing mascot the Three Lions needed at the World Cup!

If this belongs to your child or you know the owner, please contact Jo Baxter on jo.baxter@richmondandwandsworth.gov.uk or 07974 586335 so we can get him home safely.



COMMUNITY ENGAGEMENT QUARTERLY ROUND UP (CONTINUED)



ANYONE FOR CRAFTERNOON TEA?

Join us every Thursday between 3.30pm-4.30pm at Portswood Space (4 Portswood Place, SW15 4ED) for free Crafternoon Tea!*

The sessions are led by 'crafty' volunteer and local parent, Symone. The crafting activity varies each week and is inspired by different themes, but may include sand art, colouring, weaving, scratch art and tie dye. Parents and carers are encouraged to take part too! And, of course, there are always yummy refreshments available!

One parent said: "It's great to be able to take some time out for myself and enjoy some crafting. I'm not sure which of us enjoys coming here more!"

** Times will vary in school holidays.*



P..P..P...PICK UP A PENGUIN



Penguins are pretty laid-back animals that like to take care of their children and socialise; so a penguin-themed session seemed like a good way to launch Crafternoon Tea in January!

Attendees were given penguin masks, and enjoyed weaving jolly little penguin characters.

To do this, they fed brightly coloured ribbon under and over and through the slots in the base and watched the pretty effects emerge. They finished off their penguin characters with cute little bows and bow ties! Weave, thread, stick and make!



LUNAR NEW YEAR



Each Chinese year is associated with an animal sign, according to the Chinese Zodiac cycle. 2023 is the year of the rabbit. The sign of the rabbit is a symbol of longevity, peace, and prosperity in Chinese culture and 2023 is predicted to be a year of hope.

To mark the occasion, we made Chinese New Year lantern decorations that gave a stunning stained-glass effect when attached to windows. We also shared fortune cookies; all of us eagerly ripping open the gold foil wrapper to discover the hidden messages of wisdom and luck inside.



If you would like to suggest a theme, celebration, or occasion for Crafternoon Tea or to volunteer to help out at the sessions, please contact jo.baxter@richmondandwandsworth.gov.uk



LOVE IS AL-TON AROUND... ... AND SO THE FEELING GROWS!



And it seemed to keep growing in Roehampton this Valentine's Day! Following on from the success of last year's 'Love Is Al-Ton Around' event we decided to team up with Roehampton Library and put on even more 'love-ly' activities.

The event took place on 14th February and attendees got to decorate homemade heart biscuits, design Valentine's Day cards and create colourful heart-shaped magnets inside the library.

Outside, residents wrote messages of love, hope and inspiration onto wooden hearts which were tied to our 'Love Wall' - which had kindly been installed by the Roehampton Community Shed to the front of the library - for all to see. One young contributor wrote on her heart 'I love everything that you have done for me'; a message dedicated to her best friend.



UPCOMING EVENTS AND ACTIVITIES

Keep an eye on our community noticeboards, websites and Twitter page for information on upcoming events and activities, including:



ALTON, A PLACE I CALL HOME

Do you live on the Alton Estate and enjoy getting involved in theatre?



Group 64 Theatre Company (G64) is creating 'Alton - A Place I Call Home', with residents of all ages, to celebrate the Alton Estate and the stories within.

This exciting show will represent the estate in a whole new way and will be performed as part of the Wandsworth Arts Fringe in June.

In preparation, G64 is running weekly sessions at Heathmere Primary School. The children are exploring what Roehampton might look like in the future and have been creating maps of their homes and exciting news reports and YouTube videos about the Alton Estate.

G64 is also running sessions for teenagers and adults at Roehampton Library. Using a mix of drama, movement and poetry, the participants have started

to reflect on what the Alton means to all of us and how we want it to be represented to those outside of the community. They've also eaten a lot of biscuits and drunk lots of tea!



There are so many ways to get involved, so there is no reason not to!

- Become a **Story Catcher** - could you become part of the storyteller team and help us capture some truly fascinating stories from residents?
- Become a **Place I Call Home Performer** - join the group at Roehampton Library from 5.30pm to 7pm every Wednesday.
- Become a member of the **Creative Team** - do you have an interest in dance, poetry, spoken word, or are you a musician or a writer? Could you volunteer on our creative team to help bring these wonderful stories to life?
- Be a **Place I Call Home Volunteer** - could you support the project by volunteering at the final rehearsals and performances?

We Need You!

To make this performance really wonderful and a true representation of the Estate, G64 Theatre Company needs you! It wants as many interesting stories and as many residents involved as possible!

G64 would love to meet more local people at its sessions so that it can create an amazing piece of outdoor theatre and best showcase the Alton and what it means to the people who live here!

If you'd like to come along for a session to try it out, please email: info@g64.org.uk

CONSTRUCTION ADVICE WORKSHOPS AT PORTSWOOD SPACE



Work Match is Wandsworth Council's job brokerage service. It works with local employers to recruit Wandsworth residents exclusively into local vacancies.

The Work Match construction team held the first of a series of open sessions at Portswood Space on 12th January to meet residents and discuss opportunities in the construction industry. It was a successful event, with residents taking lots of important information away with them.

The construction team works with about 20 local construction developments in Wandsworth, securing a range of jobs and apprenticeships for residents. From cleaners and apprentices/trainees to graduates and experienced workers, there is a huge range of construction opportunities available for local people.

The benefits of working on a local development project include lower transport costs and a shorter journey to work each day.



Everyone is invited to drop into future sessions at Portswood Space (4 Portswood Place, SW15 4ED), between 10am and 1pm, on Thursdays 1st June and 29th June, to chat with one of the friendly Work Match team

who can advise on training, applying for jobs, and getting you ready for work.

To help you get the job which is right for you, the team offers access to:

- CSCS and other construction-related training;
- construction work experience;
- construction jobs;
- construction apprenticeships;
- and construction graduate programmes.

For any further information regarding Work Match, the team can be contacted by phone or email.

Telephone: 020 8871 5191

Email: wandsworthworkmatch@wandsworth.gov.uk

Visit the website: wandsworthworkmatch.org

FREE COMMUNICATION SKILLS WORKSHOPS FOR WOMEN



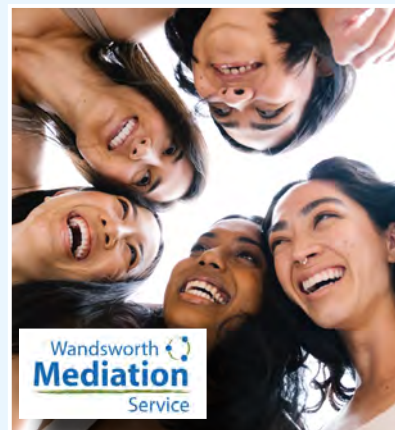
Empowering the women of Roehampton

Wandsworth Mediation Service is a local charity who provide free conflict and resolution training services for Wandsworth residents. The service has been running a series of 'Empowering Women' workshops which have been developed thanks to a grant from the Wandsworth Grant Fund.

These unique communication skills workshops, specifically designed for women, took place between January and March in Portswood Space. The workshops were developed after consultations with SW15 Women's Network, the Roehampton Response Network and other community organisations, and were aimed specifically at women seeking to improve their conflict management skills and create more positive

relationships in their personal and professional lives. All sessions were completely free and confidential, and women of all ages and backgrounds attended.

The first workshops centred around enabling women to express themselves and the second focused on dealing with conflict. Participants learnt a variety of skills, such as active listening, understanding and managing emotions, and strategies for resolving conflicts. They also had the opportunity to practise these skills in simulated scenarios and receive feedback and guidance from experienced female facilitators. In addition to practical skills, the workshops also provide a safe and supportive environment for women to share their experiences and learn from each other.



Future events will be published on the Wandsworth Mediation website, so please keep an eye out for these in the upcoming months: wandsworthmediation.co.uk

SOUNDS OF WANDSWORTH AT NIGHT

Three Roehampton residents have taken part in a project exploring what Wandsworth sounds like at night.

The project is a collection of stories and sounds, told and captured by nine residents from across the borough, as part of the new Night Time Strategy (NTS) for Wandsworth. The sounds include those from people's everyday lives - from concerns about safety, to the sound of joy, and the magic of quietness. You are invited to listen and put yourselves in their shoes.

Why Sounds?

Our experience of sounds is heightened at night; noise easily becomes a nuisance and silence quickly becomes eerie. Sounds can surprise or reassure us. They can tell us that we're not alone or heighten our sense of isolation. Often, we are not really listening, with sounds drowned out by our headphones.

Sounds can also reveal a lot about the 24-hour cycle of the city. From the sounds of waste collection and food deliveries to hospital waiting rooms and bus depots; our night time soundscapes reveal the diverse workforces and complex logistics that keep our city running.



A Night Time Strategy for Wandsworth

Wandsworth Council is pioneering the development of one of the first night time strategies in London. The strategy looks holistically at all aspects of the borough from 6pm to 6am, to develop inclusive policies that support everyone in Wandsworth at night.

Find out more about the project and leave your thoughts on the interactive map:
<https://ntswandsworth.commonplace.is>



Listen to Asma, Basma and Tatiana's tracks on YouTube: search for the 'Sounds of the Borough: Wandsworth at Night' playlist on the [WandsworthBC YouTube page](#)



Asma

"My name is Asma. I've lived in Roehampton for the last 20 years. I am a housewife. Someone once said to me "Oh you're not working"

and I thought for a second: "my work starts from 5am and ends at 10pm". Everyone thinks I am not working because I am not getting paid for these household jobs. I've done voluntary work at Queen Mary's Hospital and in my daughters' school. I have two daughters aged 12 and 9.

20 years ago, when we moved to Roehampton, it wasn't very safe, particularly Danebury Avenue. Lots of incidents of robberies. Snatchings. Beatings happened very often. Now, even though some incidents still happen, it's much, much better than before.

Despite this improvement, we were the victims of one incident around 18 months ago when somebody attacked our house with a very big stone and smashed our sitting room window. After five days, they attacked again and broke the kitchen window. In total, they attacked five times; always between 7pm and 9pm. These incidents affected my eldest daughter's mental health very badly. She was near the windows when the attacks happened and did not sleep for about a month.

We contacted the GP and he referred her for counselling. We tried hard to build her confidence back and to help her out of this anxiety and depression. I am happy that she is taking part in this project which gives her more confidence."

We are not alone.

"Change for peace, change for safety, and change to make a fearless neighbourhood"



Basma

"Hi, my name is Basma and I live in Roehampton. I am a secondary school student. I'm mostly outside at night when coming back home from my extended family's house or from the shops. Sometimes we go for walks with other friends at night as well.

I like my neighbourhood because it's a very close community. During the night time, I used to feel very anxious and scared because you never know what can happen. I feel much safer at night now because I feel more connected with my community.

I really like this project because I feel like when people hear our recordings and our stories, they will feel like they can relate to our night time activities and I think they will feel much safer going outside knowing that other people are making night time in Wandsworth a safer place."

A choir of birds.

"We would always wave our hands along with the sounds and the beat of the songs"



Tatiana

"My name is Tatiana, I'm 33, and I live in Roehampton where I work at the Public Library. I love going out after dark for a walk; I find it really relaxing, especially after a long day at work. I go out with my girlfriends once a month where we dance until the early hours of the morning. This was one of the reasons I decided to join the Wandsworth at Night project; to be able to work with the council towards making our streets safer for girls and women.

I have noticed that there are not many places to go after dark if you don't have any money. Most of the places in Wandsworth are not very well lit and it's honestly scary walking alone after dark.

I loved talking with people from other neighbourhoods and exchanging experiences. I believe that Wandsworth is a really nice place to live; I especially love Roehampton and our community full of wonderful people that are always ready to help you."

Please be safe.

"I really hope that something can change"

SAVING VITAL BUS ROUTES



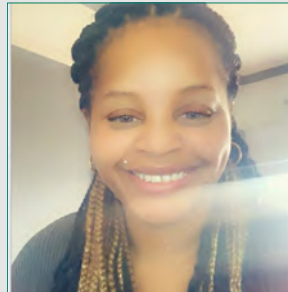
Wandsworth Council Leader, Simon Hogg, has welcomed news that passengers in Roehampton will not lose vital bus services to central London.

Following a review, the Mayor of London, Sadiq Khan, has agreed not to cut a range of threatened London bus routes, including the N74 and N72 which serve Roehampton.

The council said the loss of the two night buses between Roehampton and central London was particularly problematic as it would cut off the area and could potentially put women, girls and vulnerable people at risk.



News from the Western Area Team



WELCOME TO OUR NEW ESTATE MANAGER, TAMMY TAYLOR

"Hi! I'm Tammy Taylor; introducing myself to Roehampton as a new Estate Manager for the Western Team!

I come from a financial background, working within the finance sector for over 20 years. Due to the pandemic, I was forced to make a career decision, which led me to Wandsworth Council. In December 2020, I joined the Non-Residential team as an Admin Assistant and, after two years, I was welcomed into the Western Area Team in January, to start this new, exciting and challenging role.

I never take life too seriously and I welcome any chance to see the world. Friends and colleagues describe me as 'cup half full' kind of lady, who always looks on the bright side of life."



INTERVIEW WITH OUR NEW CHILDREN'S LIBRARIAN, TATIANA!

Hi Tatiana, congratulations on your promotion to Roehampton Children's Librarian! What role were you doing previously to this and what are you most excited about for your new role?

Thank you! My journey with Wandsworth Libraries started as a local resident, looking for a warm and safe place to take my child.

We would go to the library in the mornings, go back home for lunch, come back, and stay until closing time. I was always trying to help the staff; putting chairs back or sorting books put in the wrong order. My daughter grew up organising the colouring pencils and doing puzzles in the Children's Library in Roehampton. After a while, I was offered to apply for an official volunteering position. I felt so happy and grateful to be able to give back to the country that became my new home, by helping my community.

After 4 months, I got a position as Saturday Assistant in Putney Library and kept volunteering in Roehampton during the week. A year later, a post became available in Roehampton Library, and I was made a Senior Library Assistant! I was over the moon; I was able to run my own events, buy books for the adult library, but most of all I felt so at home!

Just a year and 3 months into my Senior Library Assistant position, I was able to apply for my current post and I'm so happy to be offered the job!

I'm most excited about being able to inspire future readers who will grow up and bring their children back to the library! Especially now with the cost-of-living crisis, it's great to be able to provide this warm and safe space six days a week. There is nothing better than a child's laughter and smile when then find a book they like!



Can you tell us a bit about growing up in Bulgaria and the influence and importance books had in your life?

I was raised by my mother who was a single parent and had to work three jobs just to pay the rent and put food on the table. It was just the two of us against the world. I had to start work when I was just 10 years old. So, you can say that the books were my escape from reality.

I remember that my primary school library had a rule that you can borrow no more than four books for two weeks; however, this rule never applied to me. I was allowed to borrow up to 20 books because I was a very speedy reader. My mom used to say that 'I eat the books with their covers!' I would hide my books behind a study book and read in class. I would often get in trouble because of it - the teachers would write in my school diary 'Reads during class'!



I received many certificates from my school library, which I still keep as an honorary library member. I love books! I feel sad when I finish a book; it's like leaving a dear friend.

How long have you lived on the Alton Estate and what do you like about the area?

My husband came here in May 2017, and our daughter and I joined him in February 2018. I had the feeling when I was growing up in Bulgaria, that something was missing, I didn't feel like I belonged there. The



moment we arrived in Roehampton, I called my mother, who at the time was still in Bulgaria, and I said "Mom, I'm finally at home! I belong here!"

I love the people here. They are warm and caring, and they always try to help each other. The first person to make me feel like this was Miss Orde, who runs the Roehampton Rocks after school club. She invited us to join her at Christmas in 2018 for a lunch with the community, and that has become a tradition in our family.



As an active member of the SW15 Women's Network and chair of the Safer Neighbourhood Ward Panel, is there some information you can tell us about these organisations for people who may not know about them?

SW15 Women's Network is an amazing place - not just to meet people for a chat but to be able to find any type of information. We get people from all walks of life, different religions, ages from 0 to 70+, and from all over the world working together for better a Roehampton. Vicky who runs it is amazing! Together with Verena, they have created a safe space for women. We often have local councillors, Fleur Anderson MP, local police officers, solicitors, representatives from Citizens Advice, the NHS, local GPs, religious leaders and many non-profit organisations, who will help each other. It's a network of truly amazing women! I would encourage women and girls to join our **SW15 Women's Network coffee mornings, every Wednesday from 10am-12pm at the Alton Activity Centre, SW15 4DR.**

In my new role as Chair of Safer Neighbourhood Roehampton, I liaise a lot with my deputy, Deacon Kathy Johnson. We sit together over a cup of coffee and discuss what we should include in our next meeting with the public. We held our last meeting with Roehampton police officers, Wandsworth Housing Team representatives, dog warden representatives for Roehampton and Putney, local councillors and members of the public on Tuesday 21st February at Roehampton Library. Thank you everyone who came along!

The idea of these meetings is for residents to ask agencies questions and to hold them accountable. Very often we forget that behind the police uniform, or the title of a warden or councillor, there are real people just like us - frustrated, and they too want better for our community. I strongly believe that if you want something to change, you need to be the one to change things. We need to identify the problems and see how to resolve them; we need to understand what works and how to keep it going.

Anything else you would like to tell us about?

If any of you find yourself in a situation where you need help, you need to remember that there is help available for everyone. You just need to ask; very often people feel ashamed to share that they are struggling.

"We, in Roehampton, are blessed with many organisations wanting to help and support local residents."

If you are looking for work, come to the library on Friday mornings after 10am and talk to Warren from Work Match; he always has job opportunities.

If you are struggling for food and you don't want to tell anyone, you can get a list of all foodbanks in Wandsworth from the library notice boards or you can ask me for more information. Roehampton Community Box is also feeding so many families and is starting to open more days to support more people.

If you are lonely and you want to talk to someone, join one of the many groups in Roehampton. You can find more information about this at the library. You can also come in every Friday 10am-12pm for a cup of coffee, biscuit and a chat. It's free for all!

If you are looking for a school or a nursery place, we have amazing schools and nurseries in the area. I'm especially amazed with the work that Miss Lewis does in Heathmere Primary School, and I always advertise it; but this is probably because my kid goes there!

There is so much more help available for our community, and just like the four pillars of Wandsworth Libraries say - we are trying to provide you with better services, working together to build better businesses in the area, to become better people, so we can have better communities for all of us!



MEET THE REGENERATION TEAM!



We'd like you to get to know the Alton Regeneration team. In the last edition we featured our Team Manager, Bernard Brennan. This time we're shining a spotlight on our Senior Project Officer, Ms Antonia De Lima!



Known within the team as 'ADL', Antonia is the longest serving member of the Regeneration Team working on the Alton, having started on the Winstanley and York Road regeneration scheme in 2015. She claims to have "grown up in the Council", having done work experience, summer jobs and election work across various departments since she was 16. Following university, she returned to Wandsworth Council and had roles in the Interpreting Service, Chief Executive's Office and Register Office before joining Regen. She clearly loves this borough and its residents!

Antonia was responsible for project managing the build of the first residential block in the Alton regeneration scheme - McKinney House on Bessborough Road. She leads on the 'Meanwhile Use Strategy' and Communications work for the scheme, including the production and distribution of this newsletter - so you're likely to see her a lot around the estate!

In her free time, Antonia is an avid theatre-goer (with a weakness for musicals!) and is passionate about travelling the world - she says she "doesn't want to miss a thing", and we think that applies to her style of working too!

Sign up to receive text alerts

Our text message distribution list will enable residents to receive news and event information relating to the Alton Regeneration quickly and directly.

If you are interested in signing up to receive our text alerts, please call or text **020 8871 6207** or email us at roehampton@wandsworth.gov.uk with your name, address, mobile phone number and the phrase/subject line '**Alton text alerts**', and we will add you to our SMS distribution list.



Alton Newsletter have your say!

The Alton Regeneration Team try to put together news and articles that we think you'd like to hear. Do you enjoy it? Is it relevant and of interest? What else would you like included?

We'd appreciate your feedback to help shape future editions.

Please send any complimentary comments or constructive criticism to our mailbox, roehampton@wandsworth.gov.uk putting '**NEWSLETTER FEEDBACK**' in the subject line.

Or call us on **020 8871 6207**.

We look forward to hearing from you.



Roehampton Ward Councillors

Councillor Jenny Yates
cllr.j.yates@wandsworth.gov.uk

Councillor Matthew Tiller
cllr.m.tiller@wandsworth.gov.uk

Councillor Graeme Henderson
cllr.g.henderson@wandsworth.gov.uk

You can also contact the Cabinet Member for Housing:

Councillor Aydin Dikerdem
cllr.a.dikerdem@wandsworth.gov.uk



Regeneration Team

You can contact the Regeneration Team on **020 8871 6207** or [@AltonMasterplan](https://twitter.com/AltonMasterplan) or at roehampton@wandsworth.gov.uk

If you would like to discuss anything in person with a member of the team, please contact us and an appointment can be arranged.

You can also find us at the Information Stall outside the Base on Danebury Avenue each Friday, from 2pm-4pm.



Councillor advice sessions are held on the first Saturday of every month at Roehampton Library, 2 Danebury Avenue, from 11am - 12 noon.



H2269 (2.23)