

Brightside

Issue 198 November 2022

The magazine of Wandsworth Council

Local legend returns

Frank Bruno comes home for Black History Month



Dick Whittington

The Purrrrfect Family Pantomime Adventure

THE BEST VALUE
PANTO IN TOWN

SUITABLE
FOR AGES
3-11

TICKETS
FROM
£11*
+ FEES

Running from
10th to 22nd December
Sensory Sensitive Performances
20th December

Ticket sales help us raise funds to deliver Enable's charitable mission of enriched lives through investment in supporting active lifestyles, community events, and the improvement of natural habitats.

Wandsworth Civic Suite
Book Now: enablec.org/panto

*reduced ticket price available for schools matinee bookings, email theatre@enablec.org for details.

In partnership with



enable.

For happy, healthier communities.
Not for profit.

Inside

November 2022

Cover: Frank Bruno page 11

Helping you through tough times

PAGES 4-5

Keep warm this winter

PAGE 6

Mega skips go monthly

PAGE 7

Civic Award winners

PAGE 8

New homes for local people

PAGE 9

Future Streets

PAGE 15

The Queen in Wandsworth

PAGES 22-23

Town Centre Christmas events

PAGES 24-25

What's On

PAGES 27

To obtain a copy of Brightside in large print please telephone (020) 8871 7266 or email brightside@wandsworth.gov.uk

OUR BRIGHTSIDE

Brightside is delivered to every home in the borough and pushed fully through the letterbox.

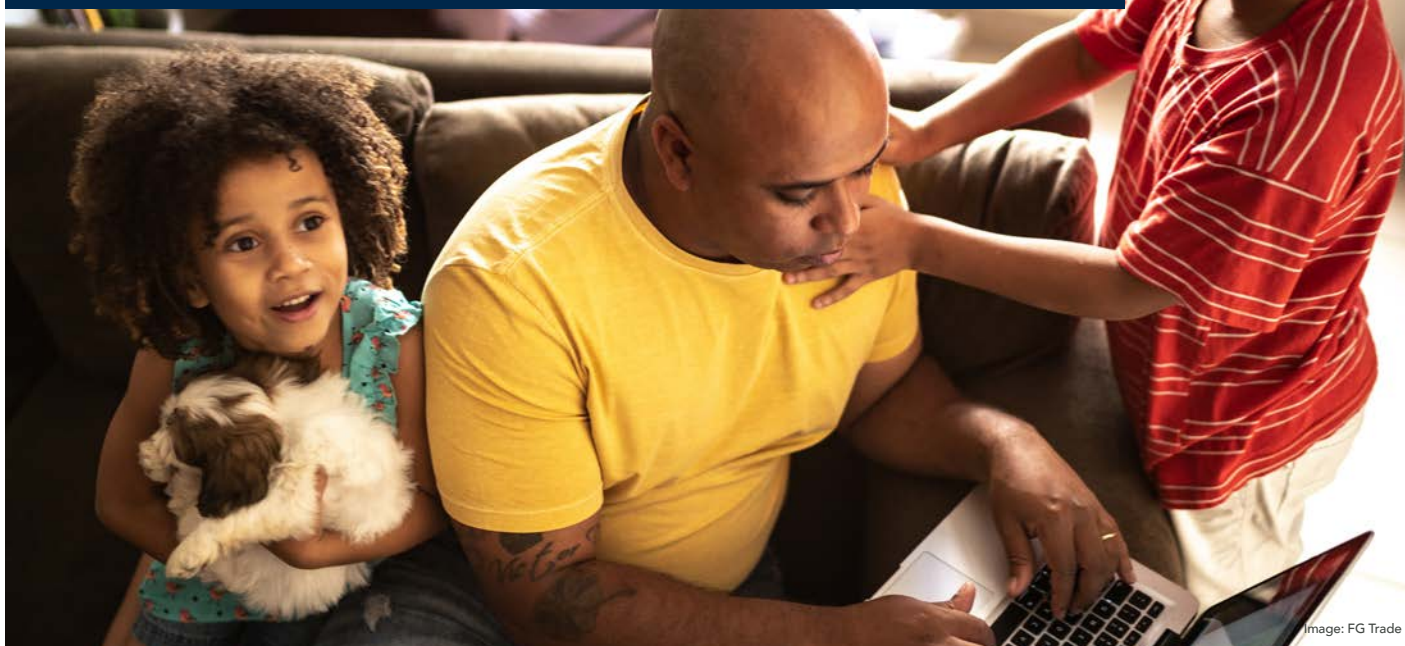
If you have any suggestions for articles or have a story you would like to tell us about please email: brightside@wandsworth.gov.uk or call: Editorial (020) 8871 8902 Advertising (020) 8871 7266

We would love to hear from you.

Brightside is printed on environmentally friendly paper, please recycle.



Helping people through the winter



A £5m package of council support will help Wandsworth residents cope with rising costs this winter.

Measures include:

- A network of **Warm Spaces** for people trying to cut fuel costs, including libraries, children's centres and other community spaces. Read more on page 6.
- **Grants to local organisations** providing cost of living support to their communities, including schemes giving support with food.
- An extra £1m for the Wandsworth Discretionary Social Fund providing **crisis support** for people facing hardship, including food vouchers and fuel grants.
- A one-off **Cost of Living Payment** of up to £150 to all eligible households.
- An online **Cost of Living Hub** including details on grants to help with fuel bills, advice on reducing bills, information on benefits and what to do in a crisis, where to get mental health support and links to community organisations and charities that can help.

There is also extra support for families including

- Help with uniform costs. The new **School Uniform Support Scheme** started this term and means families struggling financially will not have to pay for costly school uniforms when they start their next school.

It's anticipated that more than a thousand children will benefit. Vouchers worth £31 will be given for children moving into reception classes, and £150 for children moving up to secondary school.

- **Food vouchers** during school holidays for children on free school meals.
- **Holiday schemes** offering dozens of free or low-cost activities for all children, including a free lunch for children on free school meals.

To support this work the council will be convening a Cost of Living Commission to hear from residents about how their lives are being impacted and what further support is needed.

You can find more information and lots of useful links by visiting the Cost of Living Hub at wandsworth.gov.uk/cost-of-living-hub or by calling us on 0808 175 3339.



“ Wandsworth has launched the biggest Cost of Living response in London to help you through the winter months ”

The Cost of Living crisis is hitting Londoners hard. I want to assure you that Wandsworth Council is on your side. That's why we've put together the biggest package of support in London.

There are winter Cost of Living payments of up to £150 for all eligible residents and we have allocated £5 million to fund a range of projects to help people through this crisis. We're also opening up libraries, community centres and children's centres as warm spaces for residents to go this winter.

The funding for this crucial scheme comes from council reserves. That means we can keep the same low council tax - an important step as council tax hits those on low income the hardest.

Please visit our online Cost of Living hub to learn more about the support that is available. You can also call us directly on 0808 175 3339 if you have any concerns about the Cost of Living. Our advisers will get you access to financial support or put you in touch with organisations in your community that can help you.

Simon Hogg
Leader, Wandsworth Council



Cost of living help online hub

HELP AND SUPPORT
FOR LOCAL PEOPLE
DURING THE COST
OF LIVING CRISIS.



visit: [wandsworth.gov.uk/cost-of-living-hub](https://www.wandsworth.gov.uk/cost-of-living-hub)
call: 0808 175 3339



Keep Warm this Winter

The council is setting up a network of Warm Spaces in partnership with community organisations.

These will be in

- All borough libraries
- Children's centres
- The ROSE Centre, Nine Elms (see p28) and other community centres and spaces

As well as a warm welcome people will be offered hot drinks, snacks and in some locations a range of events and activities, while in others a place to shower and wash.

Council Leader Simon Hogg said: "We know that many of our residents are facing real hardship this winter because of the cost of living crisis. We are determined to do all we can to make a difference, by offering a compassionate helping hand and supporting our residents through these difficult winter months. And our funding for this important scheme can be delivered for the same low council tax."

See a directory and interactive map at wandsworth.gov.uk/warm-spaces

Other sources of support

The Winter Warmth Service has advice on keeping your home warm, staying well and cutting energy bills.

Call Freephone 0800 118 2327

Text 07928 394 482

Email enquiries@thinkingworks.co.uk

The Winter Wellness site has tips for keeping warm and well – wandsworth.gov.uk/winter-wellness

The Wandsworth Cost of Living Hub has lots of tips and sources of support on how to make ends meet – wandsworth.gov.uk/cost-of-living-hub

Thanks to the almost 200 of you who came along to our Silver Sunday tea dance at the Wandsworth Civic Suite – part of the wider Brighter Living Fair helping older people live full, independent lives.

The council's adult social care team are sending out a new newsletter by email letting people know about services and events. To sign up, visit public.govdelivery.com/accounts/UKLBW/subscriber/new



Mega Skips are monthly

Mega Skips are now being held every month, in different locations each time spread around the borough.

Usually there is a charge for bulky waste collections, but you can take up to six items along to the mega skip nearest to you for free, including some electrical equipment and household items like mattresses and sofas.

Judi Gasser, cabinet member for the environment, said: "As promised, we're making it easier for residents to dispose of bulky items, saving them time and money and helping to reduce flytipping. If you know an area that you think would benefit from a mega skip, email me at Cllr.J.Gasser@wandsworth.gov.uk."

Full Mega Skip Day times and locations will be promoted on the council's website wandsworth.gov.uk and twitter feed, [@wandbc](https://twitter.com/wandbc)



Upcoming dates

- Saturday November 26
- Saturday December 10



EXPLORE PUTNEY *For all your Christmas needs*

Putney town centre has so much to offer, for christmas presents, or christmas drinks, we look forward to welcoming you.



VISIT WWW.POSITIVELYPUTNEY.CO.UK FOR UP TO DATE INFORMATION ON PUTNEY THIS CHRISTMAS

Meet our local heroes

Each year the Wandsworth Civic Awards recognise selfless residents who have worked tirelessly to help other people and their community.

Wandsworth Mayor Jeremy Ambache said: "It was an honour and delight to meet our wonderful local heroes and thank them for all they have done. Often the contribution of local people goes unrecognised and unrewarded, so it's good to shine the spotlight on at least some who have gone the extra mile to help others."

Here are the 2022 winners.

Bridget Lawless volunteers at Be Enriched's Community Canteen, helping to turn surplus food into healthy, three course meals for local people in need.

Emily Zinkin set up Moische House to serve the Wandsworth Jewish community and is heavily involved with the Wandsworth Arts Fringe, including running the Words of Wandsworth anthology.

Iori Harries is one of the founding members of the Roehampton Community Shed, which helps tackle loneliness

and health issues. He is also part of the Roehampton Community Network.

Leslie McDonnell has been active in local politics for many years, including as Mayor of Wandsworth, and is a key member of the British Legion, St John's Ambulance and Putney Rotary. He works hard to remember and commemorate the sacrifice of the armed forces.

Rowan Salim is a member of Putney Community Gardeners - a resident-led group that works on planting, cultivation and composting projects around a patchwork of green, wild and growing spaces on the Ashburton Estate in Putney.

Mohamed Ali founded the Elays Network in 2003 which supports Battersea's community, creates links and helps people reach their full potential – especially its young people.

Nadia Sasac is a Ukrainian student at Southfields Academy who has devoted much of her time to helping young Ukrainians and families who have been forced to flee their country because of the ongoing war.

Wandsworth Welcomes Refugees campaigns and raises awareness of the needs of refugees and displaced people across the borough, forming an important central point in a network of organisations that help.

The late **Robert Molteno** sadly passed away before he could receive his award, but his work leading Wandsworth Living Streets will have lasting impact, helping to create healthier, safer streets for pedestrians.

Find out more, and how to nominate for next years awards, at wandsworth.gov.uk/wandsworth-civic-awards





One of the new blocks in the Patmore Street housing development will be named after the late Sally-Ann Ephson, a Wandsworth councillor, local campaigner and much-loved community member.

Born with Sickle Cell anaemia, which predominantly

affects people of Black African or Caribbean heritage, Sally-Ann served on the board of the Sickle Cell Society, advocating for health care reform for those suffering with the condition. She sadly passed away from the disease.

New direction for housing

We've launched ambitious new plans to help residents who need a secure home for themselves and their families.

The council has unveiled a range of housing policy changes. We will:

- Build a thousand council homes for local people
- Expand the council's programme to buy more properties for council rent.
- Stop the Part Right-To-Buy scheme.
- Extend the payback period for resident leaseholders on major works bills over £3,000 from 10 months to four years.
- Launch a landlord licensing scheme.
- Strengthen the council's commitment to work with developers, landowners and registered providers to maximise the delivery of affordable homes in new developments.
- Move away from fixed term tenancies to life-time secure tenancies to create stable and cohesive communities

Aydin Dikerdem, Cabinet Member for Housing, said:

"We want to think beyond the four year political cycle and have an ambitious set of policy changes to deliver for Wandsworth's residents.



"We are working to create a fairer, more compassionate system for all by extending the payback period for resident leaseholders and by launching a review into a scheme that would crack down on rogue landlords.

"All of this will be funded through existing budgets and will not add a penny to your council tax."

Help to get work

Sign up to Work Match for support to access a huge range of exciting and varied jobs with lots of local companies looking for their next star.

Access personal advice and guidance from our Talent Managers and Business Engagement teams exclusively available to Wandsworth residents.

If you would like to re-skill or take advantage of training and development, you can get access to courses including CVs, interview techniques and confidence building.



If you're looking for a chance to work in retail or hospitality, the retail and hospitality programme will prepare you for a career in the industry including a four-day pre-employment course followed by a chance to meet local employers.

Work Match is working with employers at the newly opened Battersea Power Station who are looking for local people to fill hundreds of roles. There are opportunities in all sectors including cafes, bars, hotel and hospitality, facilities, cinema, retail and management.

Find out more at www.wandsworthworkmatch.org



securing jobs
for local
people

Work
Match

THE BRIGHTER BOROUGH
Wandsworth

2,000th jobseeker helped

Anastasia is the 2,000th person helped into a job by Work Match. She came to England with her daughter after being forced to flee war-torn Ukraine, and has found work as a language tutor. She said: "I wasn't working and trying really hard to find a job and sending my CV everywhere. Work Match helped me find a vacancy and supported me with preparations for the interview."



Anastasia at work



Boxing legend comes home

Frank Bruno visited Wandsworth during Black History Month to share his experience of growing up in the borough, his successful career and his struggles with his mental health.

It was one of a string of events celebrating local Black leaders and culture.

“It was such a pleasure to meet Frank and I’d like to thank him for helping to break down stigmas surrounding mental health in the Black community by sharing his story in such an honest and open way,” said deputy council leader Kemi Akinola.

“We are determined that we will celebrate Black History every month which is why we have launched Black History Month 365 – a year-long celebration of Black culture and the contribution made by Black people to our community. Watch this space for details of more events and profiles of local people.”

See [wandsworth.gov.uk/black-history-month](https://www.wandsworth.gov.uk/black-history-month)



Are you a landlord in Wandsworth?

- Earn money from your property
- Various lettings schemes available
- No management fees or commission
- Free professional letting
- Free management service
- Paid incentives available*

* depending on scheme

Refer a
landlord
and receive
£200!

We are looking for properties to let in Wandsworth borough and surrounding areas.

We offer a:

- LET ONLY SCHEME**
- RENT GUARANTEED SCHEME**
- FULLY MANAGED SCHEME**

For further information on these schemes and other letting opportunities, call us on (020) 8871 7333 or email landlordlettings@wandsworth.gov.uk
Please quote Brightside

Our dedicated team of experienced officers are here to support you in finding a tenant for your property.
We offer a range of schemes:

LET ONLY SCHEME

- Maximum of 6 weeks rent in advance
- One off incentive payment
- Post tenancy sustainment service
- up to £463 paid for landlord sourced rent guarantee insurance
- Direct payments of UC housing element requested
- Free 12 month assured shorthold tenancy agreement
- Multiple viewings offered

RENT GUARANTEED SCHEME

- Guaranteed rent
- Maximum rates payable
- Free inventory and photo schedule
- Tenancy sustainment service
- Agreement between 24-36 months
- Guaranteed vacant possession

FULLY MANAGED SCHEME

- Guaranteed rent
- Full management
- Minor repairs (after first 6 months)
- Regular property inspections
- Dedicated property management officer
- Free inventory and photo schedule
- 3½ year lease agreement
- Properties can be both in the borough and neighboring areas

Terms and conditions apply

wandsworth.gov.uk/privatehousing

Designed and produced by Wandsworth Design & Print. wdp@wandsworth.gov.uk H2169(10.22)





Callum Longford, Kemi Akinola, the Mayor, Sahana Gero, Jaidon Regis

World Heart Beat moves in

A new state-of-the-art music school has opened in Nine Elms, with a 200-capacity auditorium that is London's first new public concert hall in nine years.

The Mayor of Wandsworth, Jeremy Ambache, was joined by cabinet member for culture Kemi Akinola and young musicians from World Heart Beat music charity as they opened the doors to the building on Ponton Road, SW11. Hundreds more local young people aged 5-25 can now benefit from music education and skills, with 50 per cent of the places offered for free including tuition and musical instruments.

Kemi Akinola said: "I was delighted to open this fantastic venue for World Heart Beat with incredible facilities that will help so many of our young people to fulfil their potential, regardless of their circumstances. This music centre also brings jobs and gives our communities the chance to participate in the cultural life of the borough."

Local musician Jaidon Regis, from Putney, is now an accomplished drummer working with a top 10 indie rock band. He said: "I went along to World Heart Beat after reading a feature in the council's Brightside magazine 12 years ago – it changed everything and now I am where I am!"

The charity has also been running workshops and concerts in nearby Patmore Co-operative, Savona Estate, Carey Gardens, Doddington & Rollo and Winstanley estates and works with local schools including Griffin Primary.

Find out more at worldheartbeat.org

Recognise sporting stars

Nominations are now open for the Active Wandsworth Awards, recognising our inspiring local sports people, coaches, volunteers, organisations, schools and clubs. Visit enablelc.org/leisure/active-wandsworth

Be a friend

The Battersea Befriending Network is looking for volunteers willing to spend one to two hours a fortnight befriending an isolated local person.

A three-day training course will be held in February. Email volunteering@batterseabefriendingnetwork.org.uk

Sports survey

Take part in a survey to help the council find out if its leisure centres, sports centres and other leisure facilities still meet the needs of local people.

You will be entered into a prize draw to win a three-month members at one of our leisure centres. Visit haveyoursay.citizenspace.com/wandsworthced/leisure22

Arts for Health

Local groups in can apply for council funding to deliver creative activity focused on health and wellbeing. The deadline is November 28. Visit <https://bit.ly/Arts4Health>

One Trust

One Trust supports people with complex needs and profound and multiple learning disability. If you are interested in supporting the charity or becoming a trustee visit onetrust.co.uk

Find out about fostering

If you are interested in a career as a foster carer, information events where you can meet social workers and existing foster carers are held on the second Thursday of each month.

To register, or just for an informal chat, email fosteringrecruitment@wandsworth.gov.uk or call **freephone 0808 175 3327**.

Award for caring

The council's animal welfare team has won two RSPCA Pawprint award for its work caring for lost and stray dogs and for supporting tenants and leaseholders on housing estates who want to keep a dog.

Find out about free microchipping and neutering and other support at wandsworth.gov.uk/dogs



Working together to help the environment

We know how important it is to you that something is done to tackle climate change and clean up Wandsworth's air. That's why we have set robust new targets to be a carbon-neutral council by 2030 and a net zero borough by 2043.

The council will work with residents, businesses, community groups and organisations to reduce emissions and clear up the air.

The **Wandsworth Sustainability Partnership** will see everyone getting together to share knowledge and plan joint action. The Partnership will launch at the end of this month at Battersea Arts Centre.

And in the new year a **Citizen's Assembly** will be formed as a way for local people to come up with a set of recommendations to improve air quality. We will be inviting a cross section of the population to join, so if you receive a letter, please get in touch.

The borough's **air quality monitoring network** will get significant investment.

The council's **pension fund** will be largely decarbonised - up to £80m will be invested in funds based on renewable projects like battery storage and green hydrogen.

Areas and people **most at risk** will be identified and supported. Officers will work directly with **schools**. A target has been set

to install **School Streets** at half of all borough primary schools and Mary's RC Primary School in Battersea has become the first school in Wandsworth to be part of the GLA's School Superzones Programme creating a healthier place for children to live, play and learn.

Four things you can do

- Calculate your carbon footprint at carbonfootprint.com/calculator.aspx
- Did you know textiles can't go in with your recycling? Find out how to recycle different materials at wandsworth.gov.uk/rubbish-and-recycling/waste-and-recycling-a-z
- Don't be an idler - turn your car engine off when you're stationary.
- Turn off lights and appliances when they are not needed.

“ We've set ourselves ambitious targets, but need to work together to really have an impact on emissions and air pollution. Together we can make a difference. ”

Cabinet member for the environment **Judi Gasser**



Future Streets is a new, far-reaching package of cleaner, greener and safer travel options. It includes:

- A comprehensive new Walking and Cycling Strategy.
- An extensive new cycle route on Burntwood Lane and safer cycle routes in and around Putney High Street.
- Working towards a target of School Streets at half the borough's primaries.
- Safer pedestrian crossing points on Putney High Street near Putney Bridge.
- Proposals that could see an e-scooter trial coming to Wandsworth and fewer pavement obstructions caused by e-bike hire schemes.
- An expansion of the borough's network of electric vehicle charging points.

Four things you can do

- Go on a free led walk – see the article on page 30
- Request a lamp post electric car charging point at [wandsworth.gov.uk/electric-vehicles](https://www.wandsworth.gov.uk/electric-vehicles)
- Plan a cycle route at tfl.gov.uk/maps/cycle
- Find out about free cycle training for adults and children at [wandsworth.gov.uk/cycle-training-and-skills](https://www.wandsworth.gov.uk/cycle-training-and-skills)



“ We want to increase the number of journeys made on foot, by bicycle and on public transport. It benefits people's health, improves air quality and can mean big savings for residents. ”

Cabinet member for transport Clare Fraser



Get health advice aboard our health bus, including the COVID-19 booster and flu jab.



Come and have a chat about your health

The health bus tours the borough offering on-the-spot winter jabs and advice about lots of common health problems. Come and chat about your health and get your immunity topped up with the COVID and flu vaccines.

Who can get the COVID-19 vaccine

The following are eligible for the COVID-19 vaccines,

- Everyone aged 5 (on or before 31 Aug 2022) and over can get a 1st and 2nd dose of the COVID-19 vaccine.
- People aged 16+, and some children aged 12 to 15, can also get a booster dose.
- People aged 5+ who had a severely weakened immune system when they had their 1st or 2nd dose will be offered an additional primary dose (3rd dose) before any booster doses.
- Some people, including those aged 50+, those at higher risk or who are pregnant, and frontline health and social care workers, will be offered a seasonal booster (autumn booster).

Who can have the flu vaccine?

The flu vaccine is given free on the NHS to adults who:

- are health and social care staff
- are 50+ (including those who will be 50 by 31 March 2023)
- have certain health conditions
- are pregnant
- are in long-stay residential care or are a carer
- live with someone who is more likely to get a severe infection due to a weakened immune system

Children aged 2-3 on 31 August 2022, all primary school children, some secondary school children and children aged 2 to 17 years with long-term health conditions can get the flu vaccine.

To find out when the health bus is coming to you, subscribe to the weekly council e-newsletter, Brightside online: [wandsworth.gov.uk/e-newsletters](https://www.wandsworth.gov.uk/e-newsletters)



What's your neighbourhood like at night?

Share your thoughts on what life is like during the night time in your neighbourhood, and across Wandsworth as a whole, to help us make the streets more active, welcoming and safe at night.

Wandsworth's new Night Time Strategy will look at the borough between 6pm and 6am and whether it meets the needs of the people who live, work and play here.

You can visit an online map, drop virtual 'pins' on specific locations (like a street corner), and tell us how you use the area at night – for example if you live, work or socialise there – whether you feel safe, any problems you've experienced, what's working well and what improvements you would like to see. Visit ntswandsworth.commonplace.is



NIGHT TIME  **OUR TIME**

A Night Time Strategy for Wandsworth

Stop the burn

Many people consider fires cosy and eco-friendly, but all fireplaces, pits and stoves that burn wood, coal and briquettes will release pollutants into the atmosphere and contribute towards climate change.

If you have real coal fires or wood burning appliances please check that the fuel is certified as 'Ready to Burn'. The Ready to Burn mark on packaging identifies solid fuels that are legal to burn at home in smoke control areas such as Wandsworth.

Better still, residents are being encouraged not to burn unless they have no alternative source of heating, as it causes dangerous air pollution, can upset neighbours and can damage health.

The most dangerous tiny particles in smoke, referred to as PM2.5 and PM1, are too small to see but once inhaled they can get deep into the lungs and into the bloodstream affecting all major organs of the body.

These fine particles contain known carcinogens and can also cause asthma, heart disease and have been linked to many cognitive disorders such as dementia and various cancers. Individuals such as children, the elderly, those who are pregnant or have existing breathing or heart conditions are particularly vulnerable. Current evidence suggests there is no safe level of PM2.5.

One study by Kings College London and NPL found wood burning accounts for between 23 and 31 per cent of urban-derived PM2.5 in London. Biomass wood burning is the second largest source of PM2.5 in London after road transport.

Another recent study of indoor air quality in homes with Defra-exempt stoves found that indoor PM2.5 levels were three times higher on days when stoves were used compared to non-use days.

Visit wandsworth.gov.uk/smokecontrol to find out more.



Hourly PM2.5 emissions (in grams per hour (g/h)) from one eco-certified wood burning stove (3.1 g/h) is equal to 18 newer diesel passenger cars (each rated at 0.17 g/h) or 6 modern heavy goods vehicles (each rated at 0.5 g/h).



Lido's future protected

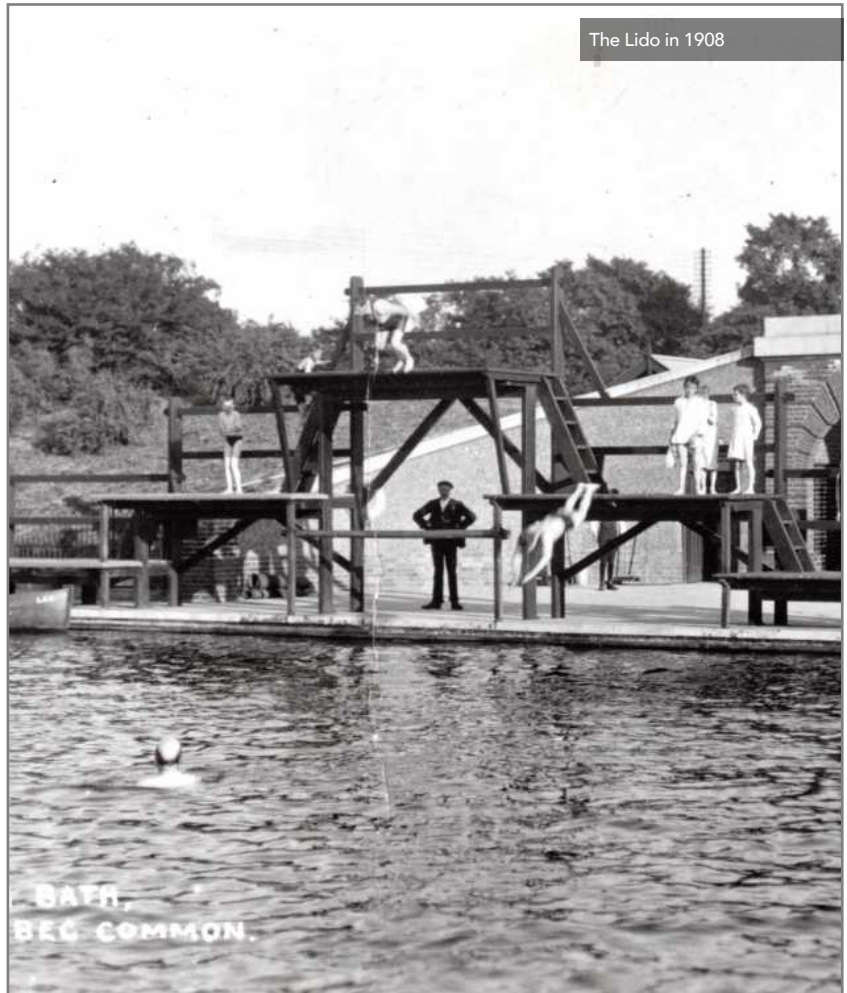
Wandsworth residents will continue to be able to swim in the UK's largest open air freshwater pool for decades to come thanks to an ambitious refurb project.

The pool, which dates back to 1906, will close on November 25 for around nine months while work is in progress to replace the existing pumphouse, which controls the pool's water supply, the construction of a new electrical sub-station to power the pumps and also the lido's modern new UV water purification system.

New pipework, filtration system and pool liner plus improved landscaping around the water's edge also form key parts of the scheme.

For more information visit placesleisure.org/centres/tooting-pec-lido

The Lido in 1908



Who deserves a Green Plaque?

The council wants to get local people involved in decisions on who, what and where should be commemorated with a Wandsworth Green Plaque.

So far there are 16 plaques honouring famous people or places not covered by the English Heritage Blue Plaque scheme including former Prime Minister Clement Attlee, war heroes Albert Twyford and Edward Foster, actor Margaret Rutherford, Rampart Studios (where The Who recorded) and the Festival of Britain Gardens.

Previously they were decided by a special group, but now the public are invited to nominate people, places or events that have helped shape Wandsworth's history. Proposals are particularly welcome for stories that have been overlooked, such as those of LGBTQ, Black and Asian people, women and working class communities.

Find out more at wandsworth.gov.uk/the-green-plaque-scheme



The former Wandsworth Common home of Wombles creator Elizabeth Beresford has a Green Plaque. Shown here are her children Marcus and Kate (centre), with Roger and Fleur Hambury who lived there when the plaque was unveiled in 2019.

Tooting Military Hospital treated servicemen during and after world war one.

Keeping children healthy and fed

Families struggling to afford good quality food for their children are to get help. Work in the pipeline includes a pilot scheme to set up breakfast clubs across the borough.

The council will work with the charity Magic Breakfast to draw up a pilot scheme to give children a healthy breakfast for free. More work will also be done to encourage eligible families to apply for free school meals and healthy start vouchers. A new specification will be drawn up for the school meals contract, free school meals will be provided during the holidays, and holiday schemes will provide free lunches for children on free school meals.

Statistics show:

- Three per cent of primary school children in Wandsworth have nothing to eat for breakfast
- Seventeen per cent of secondary pupils don't eat lunch.
- Nineteen per cent are obese by the age of 11 because less healthy food tends to be cheaper
- Six out of ten parents visiting the Wandsworth Foodbank skipped meals so their children can eat.



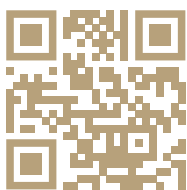
BUY FROM £126,250 (25% SHARE)*

28 x one, two & three-bed
houses & apartments

REGISTER YOUR INTEREST TODAY!

springfieldmews@pahousing.co.uk

01932 559 809



*Represents a 1-bed apartment.
The full market value is £505,000.
Terms and conditions apply.

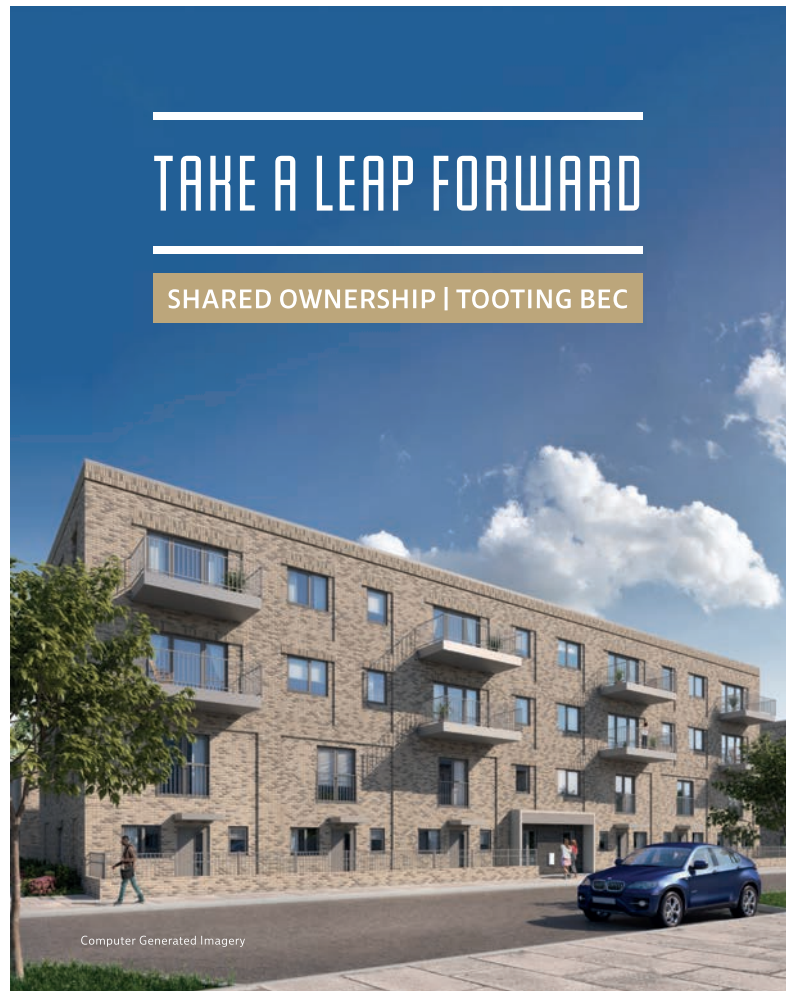




Image: palinchakjr

Help shape crime priorities

Share your views about crime and anti-social behaviour in our online survey.

Responses will feed into a new Community Safety Strategy which is likely to include action to tackle burglary, vehicle crime, violence against women and girls and hate crime, as well as looking at how reoffending rates can be reduced.

Wandsworth's lead spokesperson on community safety Graeme Henderson said: "The partnership has certainly seen some notable successes in tackling the types of crime that most concern the public, but we must not be complacent and must continue our efforts to drive down offending and tackle all crime types."

Visit haveyoursay.citizenspace.com/wandsworthcd/cs-22

or call (020) 8891 7777 to request a paper copy. The survey closes on 21st December 2022.



Know how to contact your neighbourhood policing team?

Furzedown
0208 247 8054
Furzedown@Met.Police.uk

Northcote
0203 276 8626
Northcote@met.police.uk

Shaftesbury & Queenstown
0208 247 8608
ShaftesburyQueenstown@met.police.uk

Thamesfield
0208 785 8874
Thamesfield@met.police.uk

Trinity
0208 247 8014
TrinityWandsworth@met.police.uk

Wandsworth Common
0208 247 8168
WandsworthCommon@met.police.uk

Battersea Park
0208 247 8691
BatterseaPark@met.police.uk

Balham
0740 747 4341
Balham@Met.Police.uk

East Putney
0208 785 8874
EastPutney@met.police.uk

Lavender
0208 247 8604
Lavender@met.police.uk

Roehampton
0208 785 8874
Roehampton@met.police.uk

Southfields
0208 785 8874
Southfields@met.police.uk

Tooting Bec
0208 247 8054
TootingBec@met.police.uk

Wandsworth Town
0208 785 8874
WandsworthTown@met.police.uk

West Hill
0208 785 8874
WestHill@met.police.uk

Falconbrook
0788 016 4894
Falconbrook@met.police.uk

Nine Elms
0208 247 8691
NineElms@met.police.uk

South Balham
0208 247 8054
SouthBalham@met.police.uk

St Marys
0740 749 3675
StMary@met.police.uk

Tooting Broadway
0208 247 8054
TootingBroadway@met.police.uk

Wandle
0208 247 8047
WandleWandsworth@met.police.uk

West Putney
0208 785 8874
WestPutney@met.police.uk



Picture credit Simon Wilkinson/Swpix.com

Remembering Her Majesty

In honour of Her Late Majesty, we have been remembering Queen Elizabeth II's visits to the borough.

The Queen and Prince Phillip visited Wandsworth Town Hall in June 1953. Residents decorated their homes in bunting and huge crowds lined Fairfield Street, and even stood on the town hall roof, to see her.

In 1975 Her Majesty officially opened New Covent Garden Market in Nine Elms. The Queen bought fruit and vegetables from the market throughout her reign.

Her Majesty visited the borough again in 1977 in celebration of her Silver Jubilee – part of a tour of south London.

In 1981 the Queen visited to mark 150 years of Young's Brewery and pressed the button to grind the malt for a new commemorative ale. The Queen visited Battersea Dogs Home twice, firstly in 1991 and then, as seen here, in 2015 when she opened new kennels.

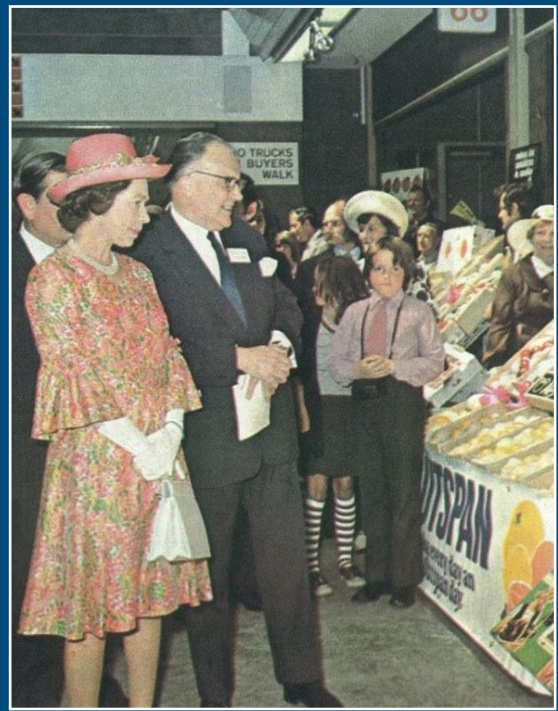
Find out more about the history of the borough from the Wandsworth Heritage Service.

Visit better.org.uk/library/london/wandsworth/wandsworth-heritage-service or follow @Better_WHS on twitter.





Picture credit Young & Co.'s Brewery archive
Wandsworth Libraries & Heritage Service



Clockwise; Cheering the Queen from the town hall roof, The Queen visits New Covent Garden, Bunting in nearby streets during the 1953 visit, Her Majesty arrives at Wandsworth Town Hall in 1953, Her Majesty visits Young's Brewery.

Wandsworth gets festive

Here's where and when you can welcome Christmas in Wandsworth this year, with events in town centres and community locations all over the borough. Keep an eye on the Wandsworth Business Team's twitter feed for updates - @BusinessWandBC



Friday November 18 - Clapham Junction
Entertainment including carol singing and Riverside Radio.

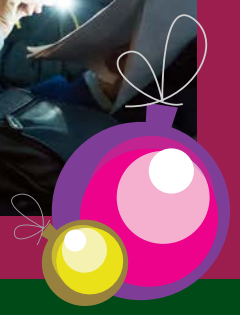
Friday November 25 Northcote Rd
Abyssinia Close
Light switch on at 5pm.

Sunday November 27 - Northcote Road
Carol singing from 11am-4pm at the junction with Abyssinia Close.

Friday November 25 - Putney
Carols, an ice rink and a light switch-on at 6pm. See the ad on page 7.

Saturday November 26 - Wandsworth Town
Carol singing and a Christmas tree outside Southside Shopping Centre.

Sunday November 27 Northcote Rd
Christmas market.



**Sunday
November 27 -
Balham**

Riverside Radio, singing and dancing from local schools, a live donkey in a manger and mulled wine. In Bedford Hill from 4.30pm.

**Wednesday
November 30 -
Roehampton**

Hear local opera singer Claire Doran sing festive favourites from 4pm.

**Thursday December 1
Battersea Bridge Road**
Choir, craft stalls, mince pies and mulled wine from 6pm.

**Friday December 2
Bellevue Road**
Carols by Trinity Road Chapel and light switch-on at 4.30pm.

**Tuesday December 6
Battersea Square**

Carols in the square and light switch-on at 6.30pm.

**Tuesday December 6
Church Lane Tooting**
Carols and lights switch on at 4:30pm.

**Wednesday
December 7 -
Southfields**
Carol singing and lights switch-on at 5pm.

**Wednesday
December 8 -
The ROSE Clubroom**
Battersea and Nine Elms residents are invited to the ROSE Community Clubroom Christmas Party from 4.30pm, including music, mulled wine, mince pies and Santa's grotto.

**Friday December 9 -
Furzedown**

Furzedown Community Network presents local community and school choirs, free children's activities, hot chocolate and mince pies from 3.30pm.

**Saturday
December 10 -
Battersea High Street**

Riverside Radio and local artists alongside the Saturday market from 4pm.

**Sunday December 18
Battersea Square**
Hanukkah celebration Celebrate the Jewish Festival of Lights.



BOOK WITH CONFIDENCE

We are a member of ABTA, Membership Number P7336 which means you have the benefit of ABTA's assistance and Code of Conduct.

All the package holidays we sell are covered by a scheme protecting your money if the supplier fails



Our Services

- ▶ Cruises
- ▶ Luxury Holidays
- ▶ Private Trips
- ▶ Escorted Tours
- ▶ Private Villas
- ▶ Short Breaks
- ▶ Family Holidays
- ▶ Honeymoon Trips
- ▶ Flights



CANARIES, MADEIRA & MOROCCO WINTER SUN

£1099 per person

SHIP: Ambience DEPARTS FROM: London Tilbury
SETS SAIL: Nov 24, 2022 DURATION: 15 nights



FESTIVE MARKET GETAWAY

£349 per person

SHIP: Ambience DEPARTS FROM: London Tilbury
SETS SAIL: Dec 18, 2022 DURATION: 3 nights



GERMAN CHRISTMAS MARKETS

£499 per person

SHIP: Ambience DEPARTS FROM: London Tilbury
SETS SAIL: Dec 11, 2022 DURATION: 5 nights



CHRISTMAS & NEW YEAR CANARY ISLANDS

£1259 per person

SHIP: Ambience DEPARTS FROM: London Tilbury
SETS SAIL: Dec 21, 2022 DURATION: 15 nights

Tel: 0203 968 0900

Website: www.7seasholidays.co.uk

@7seasholidays

@7seasholidaysuk

@7seasholidaysuk

7seasholidaysuk

Address: 199 Garratt Lane, London SW18 4DR.

what's on?

EVENTS FOR NOVEMBER 2022
TO JANUARY 2023



Little Red Robin Hood

December 6-
January 8

This year's panto mashup from Battersea Arts Centre asks who will look after the people now the Sheriff of Nottingham has captured Robin Hood? Sometimes the true hero is the person you least expect... Suitable for ages 3+.

Pay what you can on many performances bac.org.uk

Forgotten Voices November 19

Hear moving oral testimonies of the Great War by Malcolm McKay. Performances at 3pm and 7pm. £15 (£12 concessions) – pay on the door.

[St Mary's Church, Putney](#)

Pass It On November 29-Dec 3

Women and non-binary people survive on a network of unheard conversations. Join Yellow Coat Theatre Company for their showcase of emerging writers, performers and directors

[Theatre503, above the Latchmere Pub, Battersea Park Road theatre503.com](#)

Amma November 30-December 17

A powerful virtual reality performance where Bangladeshi women's experiences of the War of Independence take centre stage.

[Tara Arts Theatre, Earlsfield](#)
Taratheatre.com

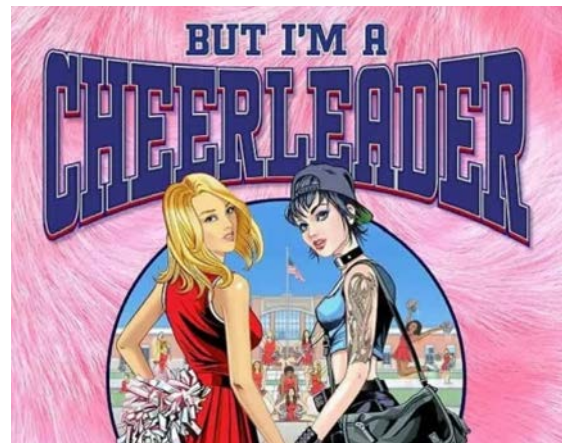
World Aids Day celebration November 30, 2pm-4.30pm

Join a mini health fair at Wandsworth Town Hall, offering free HIV testing, free condoms and free red ribbons, plus advice on staying safe and information about local sexual health services.



Mondays At The Rose
10am-8pm

The ROSE community clubroom in Nine Elms is open every Monday until February, providing an open-all-day space for local residents living in the Savona Estate, Patmore Co-operative and Carey Gardens. Drop in for a coffee, spend some quiet time making something arty or doing some work, or you could catch a film with a cup of tea.
Ascalon St, Nine Elms, SW8 4DL
nineelmslondon.com/Mondays-at-the-Rose



But I'm a Cheerleader
Until November 27

Back by popular demand, this musical is the story of Megan, an all-American girl with the perfect life.
Turbine Theatre, Battersea. theturbine theatre.com

A Celebration of Art
December 3-4

Local artists and makers will be delivering free, fun workshops and exhibiting and selling their work at art markets in All Saint Church, Tooting, St Mary's Church, Putney and New Union Square, Nine Elms. Plus there will be the chance to discover art trails hidden on your high streets during November and December. Visit wandsworthart.com.

Permablitz day at the Battersea Arts Centre Community Garden
December 4, 10-4pm

Drop in or stay all day. Step-free gardening and crafts activities for adults and children, plus the chance to meet new people and learn some new skills. Sign up in advance for a free hot lunch.
bac.org.uk/garden/

International Migrants Day

Guided Walk on Planet Tooting!

2pm, Sunday 18th December
from Tooting Broadway, SW17

'Planet Tooting' joins forces with the the International Organization for Migration (IOM) in partnership with IMIX for a special Guided Walk for International Migrants Day! It reflects on the role of migrants in our societies, their positive contribution and the challenges they face in achieving their full potential and capabilities. This day is also a reminder that human rights are not 'earned' by virtue of being a hero or a victim, but are an entitlement of everyone, regardless of origin, age, gender and status.

St Luke's Christmas Market
December 3, 11am - 3pm.

Shop for everyone on your list from a great selection of both new and pre-loved, high-quality gifts plus homemade goodies, mulled wine, a café, lucky dip, bottle tombola, Christmas activities and more.
Entry through Community Hall at 194 Ramsden Road, SW12 8RQ. £2.00 per adult. Children free.



EXPRESSIONS OF INTEREST
OPEN NOW

Register now for Wandsworth Arts Fringe

If you want to take part in next year's flagship arts festival, expressions of interest are open now, and registrations open on December 7. Artists, performers, arts organisations, schools and community groups are all welcome.
wandsworthfringe.com/get-involved/take-part-in-waf



Estate
Until December 18

A new exhibition by Nathaniel Mellors bringing together works not previously exhibited in the UK. Matt's Gallery, Nine Elms mattsgallery.org

School of Art and Design Christmas Open Day and Fair

December 4, 10am-5pm

See the work of local artists, enjoy mulled wine and live music, buy unique gifts and find out more about the PSAD.

Oxford Road, Putney. psadfriends.org.uk

Childminder Briefing Session

December 6

Find out about becoming a Wandsworth child minder

Book a place by emailing your details to childminding@wandsworth.gov.uk or fis.wandsworth.gov.uk

Melodians Steel Orchestra Annual Concert

December 17

This year the orchestra plays Highlight Cathedral - a favourite of the Queen that they played several times in her presence.

Henry Cavendish Primary School melodians.co.uk

Rotary Christmas Day lunch for the elderly

The Rotary Club of Battersea Park's free Christmas Day lunch for the Elderly is back after an absence of two years and this year is celebrating its 60th birthday.

The lunch is held in the Evolution Marquee in Battersea Park and includes lunch and entertainment. Guests are brought to and from the park by mini bus and the event runs from 11am to 4pm.

If you are over 65, live in Wandsworth and would like to go, call (020) 7223 8005

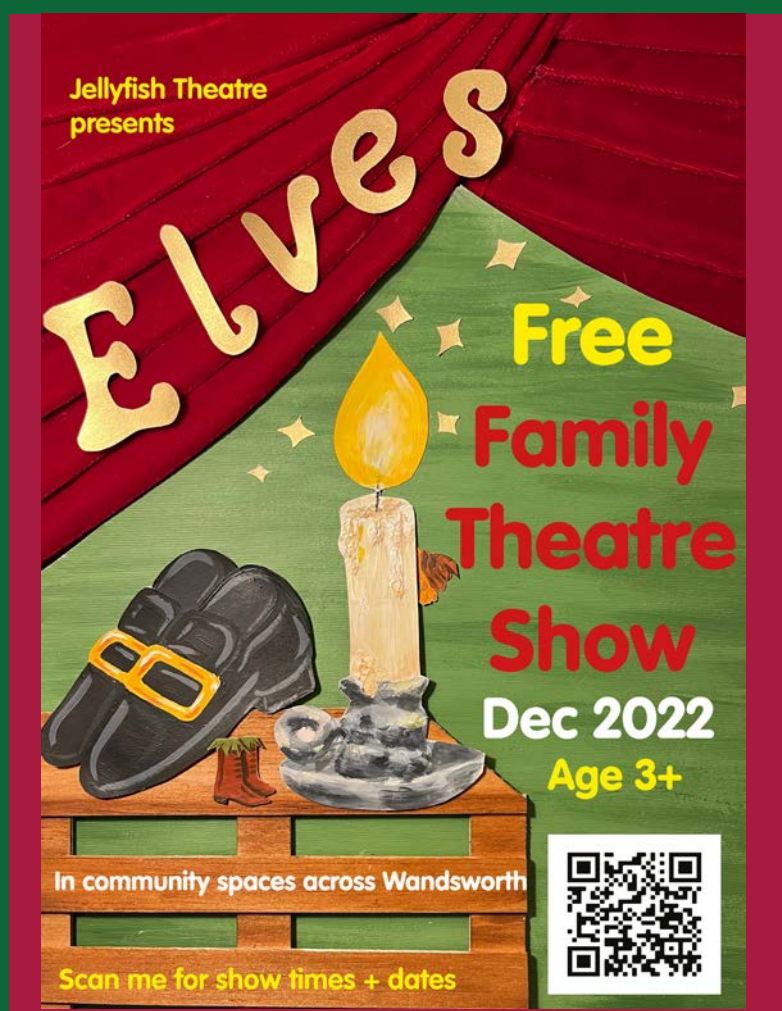


Junior Parkrun

From January

A free and weekly run for young people aged 4-14 is starting in Battersea Park – joining an existing Park Run on Tooting Common. Children can run, walk or jog and parents can join in if they wish.

Find out more, including how to volunteer to help, at enablelc.org/Battersea-park-junior-parkrun



Elves

This fun free family show will be popping up in community spaces across Wandsworth this December. Venues include Alton Activity Centre, Carey Gardens, Lennox Community Clubroom, Sellincourt Primary School, York Gardens Community Centre and Wilditch Community Centre. All performances are relaxed and admission is free, thanks to support from Wandsworth Council. jellyfishtheatre.com

Get Moving, Wandsworth!

It's recommended that we do at least 150 minutes of physical activity each week – that's just 22 minutes a day.

Whatever your age, there's strong scientific evidence that being physically active can help you:

- Manage weight
- Feel more energetic
- Ease stress and anxiety
- Improve sleep
- Lower risk of developing certain health conditions

There are plenty of opportunities in Wandsworth to help get you moving, including for people who live with a health condition and for people with various abilities. Although getting started might seem daunting, you can start small by adding activity into your daily routine and build up slowly.

Find out what you can do at wandsworth.gov.uk/physical-activity/

Walk Wandsworth offers free walks around the borough.

Walks are led by trained volunteers who can help you build up your physical activity at a pace that suits you.

Wandsworth Common –
Wednesday 10am (30-45 minutes),
meet at the back of the Skylark Café on Wandsworth Common.

Southfields, Wimbledon Park –
Thursdays 10.30am (45 minutes),
meet opposite Elborough Street Surgery.

Battersea Park –
Wednesday 10am (1 hour),
meet at the Albert Bridge Entrance

To find out more or book, or if you're interested in becoming a walk leader, email activelifestyles@enablelc.org or call Amish on 07928668215

Active Lifestyles is a programme of weekly classes for adults including Chi Gung, Yoga, over 50s keep fit and walking sports. Visit enablelc.org/activelifestyles



Get fitter, reach goals, feel confident

A free 10-week programme for men wanting to improve their nutrition, fitness and strength and conquer unhealthy habits

Guys Get Active supports all men, who are above a healthy weight to make lasting lifestyle changes whatever their ability. Delivered via 1-1 consultations with registered nutritionists and in-person and virtual activities including friendly, fun football and circuit and strength training

Start your journey with us at enablelc.org/guysgetactive or contact us at gga@enablelc.org / 07725 114056



In partnership with

enable.
For happy, healthier communities.
Not for profit.

Doing it online

Using our website helps keep your council tax bills low

Report a waste problem

wandsworth.gov.uk/waste

Request a housing repair

wandsworth.gov.uk/housingonline

Search planning applications

wandsworth.gov.uk/planningregister

Report a street problem

wandsworth.gov.uk/streets

Apply for a school place

eadmissions.org.uk

Book an MOT

wandsworth.gov.uk/MOT

Report noise and nuisances

wandsworth.gov.uk/noise

Apply or renew a parking permit

wandsworth.gov.uk/parkingpermits

Report graffiti for removal

wandsworth.gov.uk/graffiti

Report an abandoned vehicle

wandsworth.gov.uk/abandonedvehicles

Tell us if you are moving in or out of Wandsworth

wandsworth.gov.uk/MIMO

Enquire about your housing options

wandsworth.gov.uk/housingoptions

Pay it online

It's now easier to pay online at wandsworth.gov.uk/payments

Pay your council tax

wandsworth.gov.uk/paycounciltax

Pay a parking fine

wandsworth.gov.uk/parking/payment

Pay your rent

wandsworth.gov.uk/rents

Pay for a marriage or civil partnership

ceremony

wandsworth.gov.uk/ceremonypayment

Pay your business rates

wandsworth.gov.uk/paybusinessrates

Pay a waste or littering penalty

wandsworth.gov.uk/waste-enforcement

Talk to us online

weekly e-newsletter

wandsworth.gov.uk/enews



facebook.com/wandsworth.council



twitter.com/wandbc



instagram.com/wandsworth_council

My Account

Create an account and you will only have to sign in once to access the main council services.

wandsworth.gov.uk/myaccount

Other contacts at the council

Adult Social Services

(020) 8871 7707

Births, Deaths, Marriages and Voting Hotline

(020) 8871 6120

Early Years and Childcare Hotline including Family Information Service and After School and Holiday Play

Centre bookings

(020) 8871 7899

Environmental Services

including noise, pest control, private housing and licensing
(020) 8871 6127

Finance Hotline including benefits, council tax, rents and business rates

(020) 8871 8081

Housing Hotline including housing management and repairs, service charges, home

ownership, homelessness and housing advice

(020) 8871 6161

Parking and Streets Hotline including concessionary travel, blue badges, MOTs, highways and skip licensing and bay suspensions

(020) 8871 8871

Planning and Building Control hotline including Community Infrastructure Levy (CIL), land searches and street naming and numbering

(020) 8871 7620

Schools and Admissions

(020) 8871 7316

Waste Hotline including rubbish, recycling and litter

(020) 8871 8558

Renting for everyday folk who want more than the everyday.



Discover the incredible studio apartments in Sunday Mills. Enjoy renting with the simplicity of one all-inclusive bill and access to incredible shared spaces, including a gym, cinema and roof terraces.

- 5 mins walk from Earlsfield Station
- Preferential access for local residents
- All bills included

Discounted studios start from £182 p/w*

*subject to income requirements.

Email IMR@sundaymills.com to register your interest or visit folkcoliving.com to learn more.



FOLK