

Brightside

Issue 196 March 2022

The magazine of Wandsworth Council

Council tax cut

Page 5

Planting 700 trees

Page 19





Love giving them a home

#lovetofoster

Call us now on (020) 8871 6666

2 Brightside



Inside

March 2022

Cover: Tree planting in Coronation Gardens

Pedestrianisation scheme to continue

PAGE 4

Council tax cut

PAGE 5

Green light for Alton regeneration

PAGE 7

New homes roundup

PAGES 8-9

Clamping down on fly tippers

PAGES 14-15

Reporting back on climate progress

PAGES 16-17

Hundreds of new trees

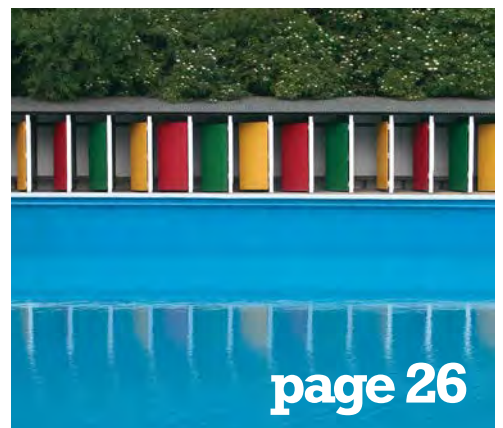
PAGE 19

Jubilee celebrations

PAGE 26

April opening for Lido

PAGE 26



To obtain a copy of Brightside in large print please telephone (020) 8871 7266 or email brightside@wandsworth.gov.uk

YOUR BRIGHTSIDE

Your Brightside is distributed by Lbox Communications. We expect all copies of Brightside to be delivered to every home in the borough and pushed fully through the letterbox.

It is produced by the council's corporate communications team. It is the only publication delivered to every household in the borough. We would like to thank all our advertisers for their support. Brightside will consider display advertisements from non-council bodies (excluding recruitment) and reserves the right to decline advertisements. The council neither accepts responsibility for the content of nor endorses any non-council advertisements.

• Editorial (020) 8871 8902. • Advertising (020) 8871 7266

If you have a comment about the magazine please telephone: (020) 8871 8902/6173 or email: brightside@wandsworth.gov.uk.

Brightside is printed on environmentally friendly paper, please recycle.

Pedestrianisation scheme to continue



Northcote Road will continue to close to traffic at weekends this summer, the council has announced.

Trial pedestrianisation schemes over the past two summers have proved so successful that the council has agreed to spend £2.8m on measures including permanent barriers and bollards, allowing the road to be closed more easily in future. The closures are popular with local businesses, who can offer al fresco dining, and make the roads safer for pedestrians and cyclists. Old York Road in Wandsworth will

also stay closed to traffic this summer. The closures are part of a package of measures to support economic recovery post-pandemic, including the creation of affordable workspaces, the development of a Night Time strategy to support the night-time economy while keeping streets safe, and a Supply Wandsworth scheme to link up contractors and local businesses.

A £5m Town Centre Investment Fund has also been set up to bring forward improvement schemes for town centres in the south of the borough, such as Balham and Mitcham Road in Tooting.

New community trust

The Borough of Wandsworth Community Trust has been set up following backing from 69 per cent of residents who responded to a consultation.

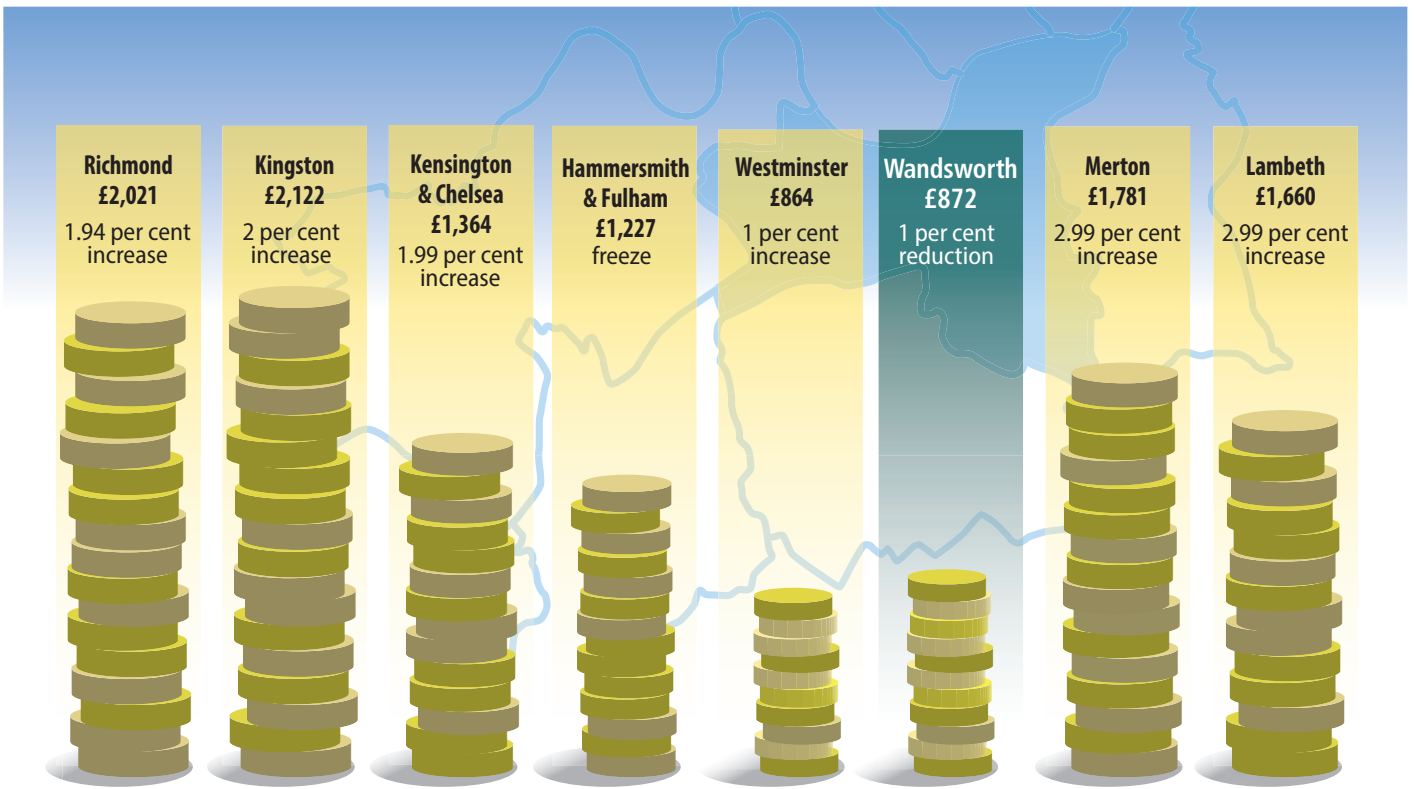


The new charity will fund measures which directly improve the lives of borough residents and the local environment.

Wandsworth is likely to have one of the lowest average council tax rates in the country, but the council recognises that many residents would like to contribute more. The trust is a registered charity, independent from the council, and overseen by a board of trustees chaired by the Deputy Lieutenant of Wandsworth, Colleen Harris MVO DL.

Each year the trustees will decide a priority theme to support. This year, it will be Children and Young People, recognising the impact on young people of the pandemic. The trustees will invite groups to bid for funds later in the year, but your donations could help fund measures such as mentoring, support to find employment or to enable a local youth group to provide mental health support.

Find out more and to make a donation at wandsworth.gov.uk/wandsworth-community-trust



Wandsworth set to be the only London borough to cut council tax

As Brightside went to press, members of the council were voting on a proposed one per cent cut in its share of council tax for 2022/3. The Mayor of London is increasing the GLA share by 8.8 per cent. This takes Wandsworth overall average B and D council tax bill for the year to £872.55 – one of the lowest bills in the country.

Leader of the council Cllr Ravi Govindia said:

“Once again Wandsworth residents will pay the lowest average council tax in the country. I know the impact that the pandemic has had on our residents and when you factor in the current cost of living difficulties that people are facing, with rising heating and fuel bills, we just couldn’t, as a local council, heap further financial burdens onto people who are already struggling.

“Wandsworth is in a unique position to be able to do this because of the way we have managed our finances and budgets over the years. That efficiency is now reaping the benefits for our residents with a net decrease in our share of their council tax bills.





The Putney Embankment

What's in store for Putney

More improvements are in store for Putney High Street this year as a £4m improvement plan continues.

Work already carried out includes pavement widening and repaving, installing trees and planters, upgrading street lights, uplighting St Mary's Church, the Putney Exchange and Putney Bridge and more facilities for cyclists.

Work in the pipeline includes improving the area in Disraeli Road around Putney Library, timed to coincide with the completion of library improvement works later this year.

Detailed designs to make the junction with the Lower Richmond Road safer for pedestrians and cyclists are expected to be agreed in the summer, with work starting later this year. The council is also keen to build on the legacy of the Thames Tideway work on the Putney Embankment. The Tideway project will see a new public space built for the people of Putney to enjoy, and council improvements could see public access improved to the riverside Watermans Green area.

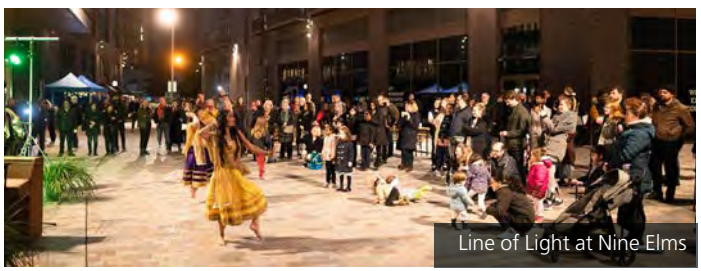


The work is in addition to other measures carried out in Putney to improve air quality, including lobbying TfL for cleaner buses and imposing restrictions on delivery vehicles leading to a significant drop in air pollution since 2016.

Making night time better

Wandsworth Council is developing a Night Time Strategy and wants to hear the views of local people.

The strategy will look at how to make the night time a better experience for everyone living, working and visiting the borough, including conditions for night workers, the night time economy, culture, safety, lighting and transport at night.



Line of Light at Nine Elms

There will be comprehensive public engagement and an online consultation will be open until April 29. Find out more and comment at haveyoursay.citizenspace.com/wandsworthced/night/. If you need a paper form call (020) 8871 6884.



Green light for Alton regeneration

Work is now set to begin on the council's ambitious regeneration of the Alton Estate in Roehampton.

More than 1,100 homes across a range of sizes and tenures will be built, including an extra 103 council homes. All existing secure tenants and resident leaseholders will be able to move into a new-build home on the estate. There will be facilities including a new village square, a nursery school and children's centre, a community hub, additional retail space and modern GP facilities.

Regeneration plans were approved by the council's own planning committee in 2020, but were awaiting the final decision of the Mayor of London, which has now been given.

New homes in McKinney House and Fontley Way are already being delivered, as these were subject to a separate planning application.

Councillor Jonathan Cook, Cabinet Member for Housing, said: "The new homes, community facilities, shops and a modern GP practices will truly transform this area and people's lives. We can now finally start the process of seeking a development partner and give residents some much needed certainty about the delivery of this long-awaited regeneration scheme." For more information visit altonestateregen.co.uk



Active Wandsworth Grants are open

The fund is open to Wandsworth-based organisations and sports clubs delivering sport and/or physical activity programmes within the borough and to individual athletes aged under 21 who live or go to school/college in Wandsworth to support costs towards regional and national training squads and competitions. Sport and physical activity coaches, teachers and instructors can also apply to support costs towards their training and development qualifications.

The next deadline to apply is May 15. Email caustin@enablelc.org for details

'Outstanding' Paddock

Paddock School, which supports children with complex disabilities, is continuing to offer its pupils an outstanding education, Ofsted has ruled.

The council has been delivering a long-term £3.4 expansion programme at the Roehampton schools to meet a significant increase in demand for SEN places.

Getting connected

Power to Connect, a partnership between Wandsworth Council and Battersea Power Station, has now donated 1,630 laptops, dongles and wi-fi vouchers to help young people and families get online. Earlier this year the council donated a further £20,000 to pay for the expansion of a programme of free courses to parents to help them with issues such as online safety.

If you are interested in joining a network of Key Supporters of the scheme, email hello@powertoconnect.co.uk

New homes for local residents and workers

Wandsworth remains on track to deliver more than a thousand new homes for local people to buy and rent by 2027.

The homes, part of the council's Housing for All and regeneration programmes, are available across a range of sizes and tenures to suit the needs and demands of Wandsworth residents.

The council is due to start working on its estate regeneration programmes on the Alton estate and Winstanley and York Road estates. In total these schemes will deliver a net increase in council homes of 400, of which at least 260 will be for council rent.

Last year, the council delivered its largest project to date with 71 new homes at Sphere Walk on Shuttleworth Road in Battersea. Eight of these homes are fully wheelchair accessible, with the remainder built to fully accessible and adaptable standards.

Ten new homes built at McKinney House on Bessborough Road in Roehampton have been allocated to residents of the Alton estate. McKinney House was named after the late Rev. Jim McKinney, a local vicar and community campaigner. The scheme represents the first stage of the Alton regeneration.

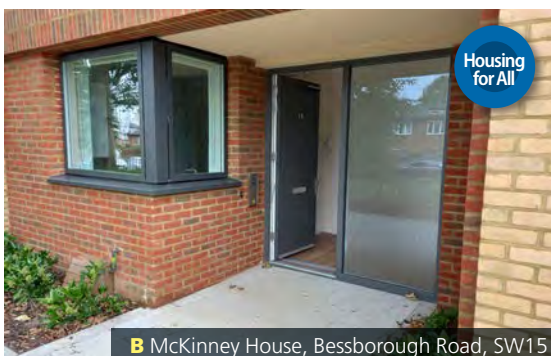
Specialist housing occupational therapists had a strong input into the design of the building to ensure that all of the new homes complied with regulations, were accessible and adaptable and incorporated principles of modern, inclusive design.



A Sphere Walk, Shuttleworth Road, Battersea, SW11



C Mitchell House, Plough Road, SW11



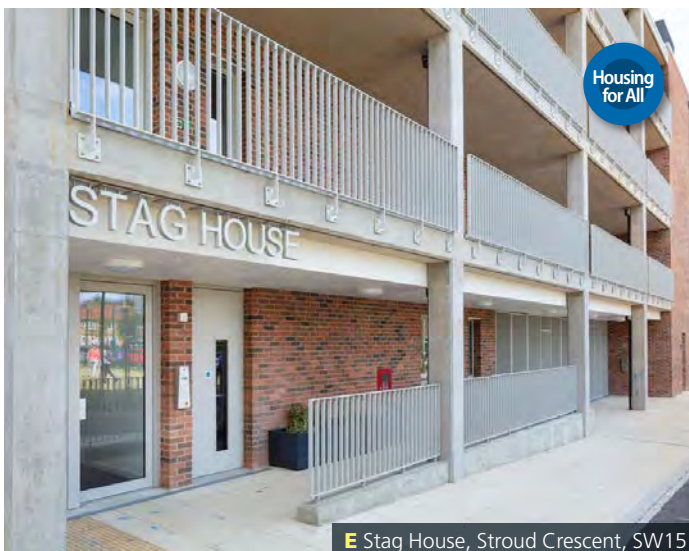
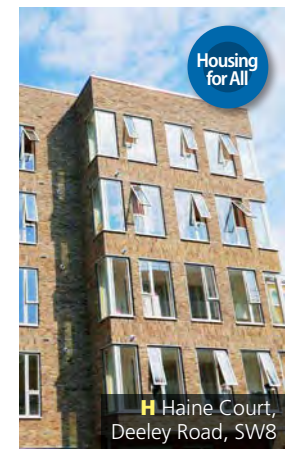
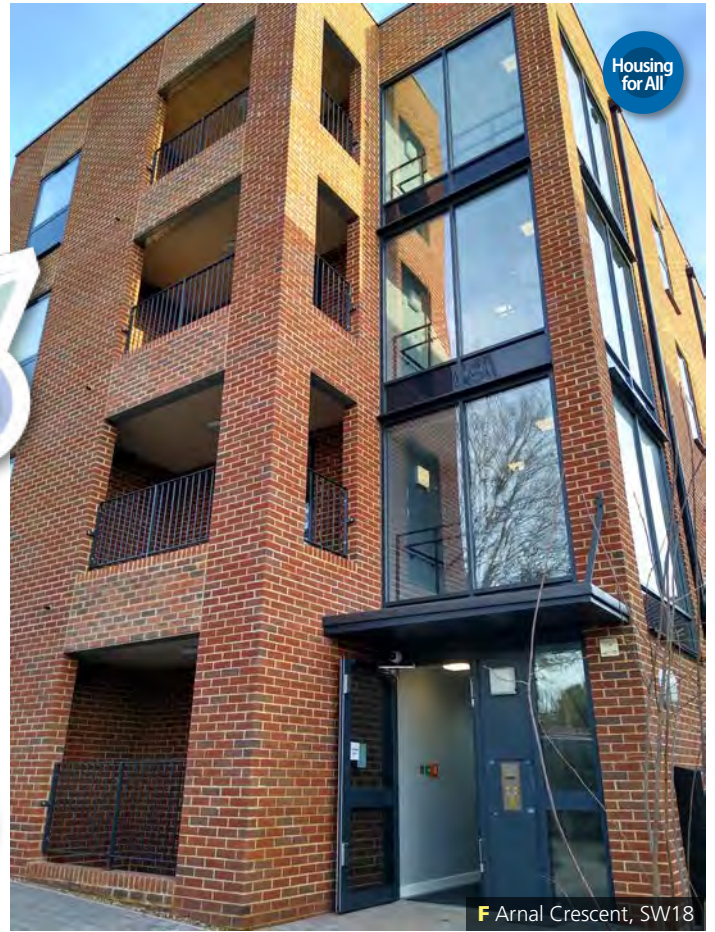
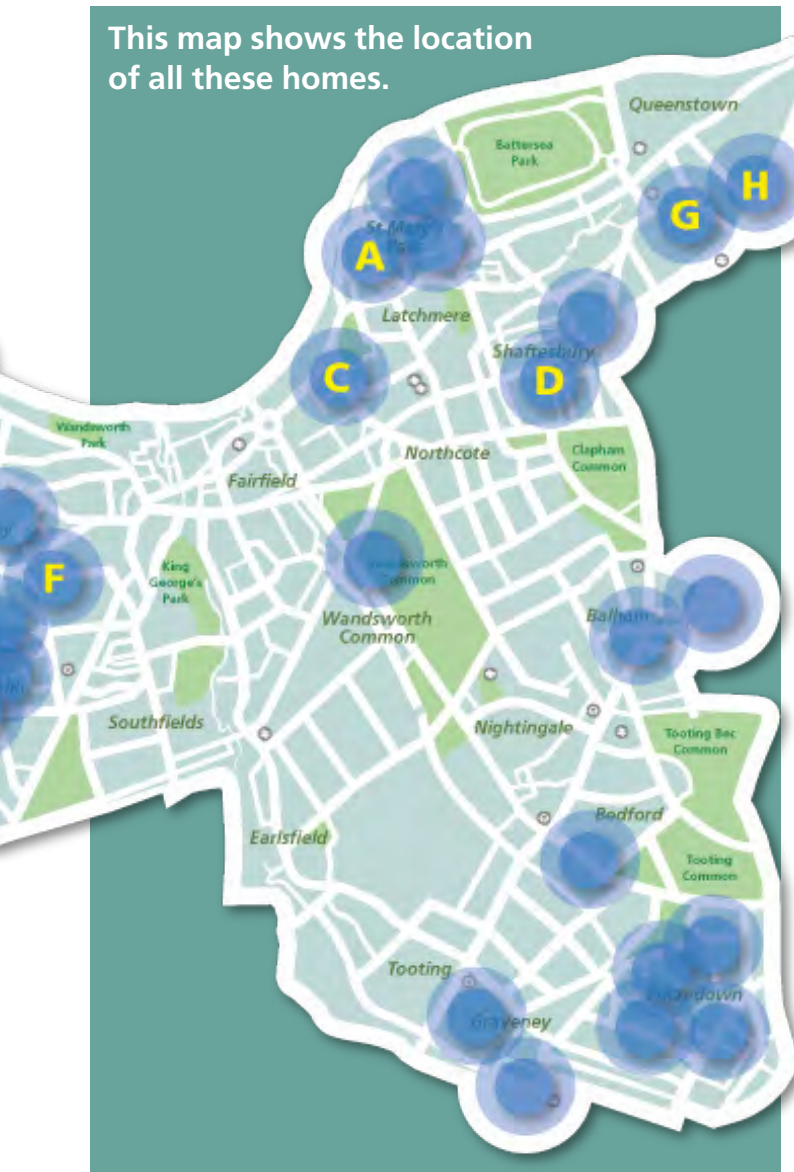
B McKinney House, Bessborough Road, SW15



D Rowditch Lane, SW11

Since the **Housing for All** programme began, Wandsworth Council has built 244 new homes across the borough.

This map shows the location of all these homes.



Andrew is a resident at McKinney House with learning and physical disabilities.



With the dedicated help and assistance of Wandsworth Council's Specialist Housing Occupational Therapist and the Regeneration Team, they have together built from scratch a brand-new home with my family's specific needs in mind.

"I'm not sure if all the words of appreciation will ever be enough to express our joy and gratitude for what this means for us. I now have my own bathroom, a more spacious bedroom on an upper floor and access via a lift, a garden that I will be able to access on





Almost a thousand charge points

Wandsworth's network of electric car charging points is approaching the 1,000 mark – more than almost anywhere else in the country.

By the end of March another 215 charging sockets are set to be fitted to lampposts and other on-street locations. This will bring the total number of publicly available charge points in Wandsworth to 936 with further installations planned. This total number also includes private sector owned chargers.

The council's own fleet of cars, vans and lorries is gradually being replaced by electric versions. All will eventually go electric as suitable vehicles become available.

Transport spokesman Cllr John Locker said: "The rapid growth in the number of charging points we have supported in Wandsworth means that running an electric vehicle is now a realistic choice for local people. We will continue to invest in this eco-friendly technology as part of our efforts to improve the borough's air quality and also to help us deliver our ambitious climate change targets."

To view a map of the borough's charging points visit zap-map.com. For more information about owning an electric vehicle in the borough visit wandsworth.gov.uk/driveelectric



Don't let Measles, Mumps and Rubella into your child's world

The risk of catching Measles, Mumps and Rubella increases when your child goes to nursery.

When you don't get your child their MMR vaccines, they're left exposed to becoming seriously ill.

Protect your child with both MMR vaccines.

Contact your GP to book their first or second dose.

Find out more at nhs.uk/MMR



Helping family finances

Rents and fuel charges for around 17,000 council tenants will be frozen from April.

A full credit will continue to be applied against the weekly fuel costs for around 3,000 residents served by a communal heating and hot water system. This credit has been in place since April 2021 and means that both tenants and leaseholders will continue to pay nothing for their fuel.

The freezes have been made possible by prudent management of council rents and finances and its ability to purchase gas supplies in advance at very competitive rates.

Wandsworth will also apply the Government Energy Rebate of £150 for residents living in band A-D homes. And families struggling with rising fuel bills may be eligible for financial help.

Find out about discretionary support grants, including crisis assistance, discretionary housing payments and fuel support grants at wandsworth.gov.uk/discretionary-support-grants.

S.M.I.L.E-ing boys in Wandsworth

Council grant scheme the Wandsworth Grant Fund funded an eight-week series of creative workshops with local schoolboys, culminating in an exhibition of portraits by the artist Kay Rufai.

The S.M.I.L.E-ing Boys project used creativity to address the mental health needs of young black boys while challenging negative stereotypes. Boys from Ark Putney Academy, Ark Bolingbroke Academy and St John Bosco College took part. The council's arts service supported the project.

The deadline to apply to the next round of the Wandsworth Grant Fund is April 4. Find out more at wandsworth.gov.uk/WGF.





Credit - Charlie Round-Turner

Get ready for 2022 in Nine Elms

BATTERSEA POWER STATION WILL OPEN TO THE PUBLIC FOR THE FIRST TIME IN ITS HISTORY THIS SEPTEMBER WITH SHOPS, RESTAURANTS, FOOD HALL, CINEMA, CAFES, EVENTS AND OFFICES. WANDSWORTH COUNCIL IS ENCOURAGING LOCAL RESIDENTS TO TAKE ADVANTAGE OF THOUSANDS OF NEW JOBS AND LEISURE OPPORTUNITIES COMING SOON.



Nine Elms and Battersea are set for some more exciting changes as 2022 unfolds, bringing hundreds more jobs, new homes and green spaces to this part of the borough.

Just six months after the Northern line extension opened with new Tube stations at Battersea Power Station and Nine Elms, the route is seeing a steady flow of passengers with around 100,000 journeys a week.

This will grow as the new town centre takes shape around the Grade II* listed Battersea Power Station with thousands of new jobs and businesses opening. When the building opens in September it will be home to over 100 shops, bars, cafes and restaurants, apartments, office space and unique events and leisure attractions, including the Chimney Lift which will give 360° views from the top of the north west chimney. There will also be a new six-acre riverfront park that is open to the public.

Running towards the river from the new Battersea Power Station Tube station, a new high street called Electric Boulevard is soon to open with a mix of office space, shops, bars and restaurants, a park, playground and a new hotel.

More improvements include:

- A new stretch of the linear Nine Elms Park will open this spring in Embassy Gardens just off Nine Elms Lane. The final landscaping between the US Embassy and the office building for Penguin Random House will be finished in April. The park is open to everyone and will eventually link Vauxhall with Battersea Power Station in a continuous route once all phases are completed around 2025.
- Just round the corner on Ponton Road, bold and colourful gateways will be installed around Arch 42 this spring. The newly-opened arch under the mainline railway links New



Coming soon: the linear Nine Elms Park

Covent Garden Market with Nine Elms Lane and the river, cutting journey times for pedestrians and cyclists.

- Nearby, eight revamped outdoor sport and play spaces are re-opening around Patmore, Savona and Carey Gardens estates with new equipment for all ages.
- Matt's Gallery opens this April in a custom-built gallery space just off Ponton Road, SW11. The contemporary art gallery will be free to enter with studio spaces, double-height gallery and a performance and events space.
- From June, Wandsworth's World Heart Beat music academy will welcome local students from all backgrounds to a new state-of-the-art music education centre in Embassy Gardens with recording studio and concert hall.
- Theatre503 is expanding with a new 320sq m, state-of-the-art studio space called 503Studio, at the heart of the new Nine Elms Park by 2023.

Find out more about all the changes and opportunities in Nine Elms at www.nineelmslondon.com



Cllr Steffi Sutters joins Griffin Primary pupils at a revamped playspace on the Patmore estate, Nine Elms



Pupils at St George's CE Primary School cross Thessaly Road

Thessaly Road, SW8 has been spruced up by Wandsworth Council with a new cycleway, improved footpaths and three zebra crossings making it safer for pedestrians and children at St George's Primary School.

**Say
NO to
fly-tipping!**



#MyWANDSWORTH



CLAMPING DOWN ON FLY TIPPERS

As part of its MyWandsworth Campaign, the council is reminding people to do the right thing with their rubbish, so the inconsiderate few who think it's ok to fly tip don't ruin it for everyone else.

Signs have been going up in hotspot areas, where people dump their rubbish illegally, reminding them Wandsworth takes a zero-tolerance approach to fly-tipping, and will fine those who think they can get away with it.

Between 2020 to 2021 nearly 5150 fines were issued for littering and fly-tipping offences across the whole borough.

Residents can help do their bit by reporting fly tip offenders. The council will investigate and take action. Search for **"Report fly tippers Wandsworth"**.

“ We're reminding residents when someone has been fined £400 in their area, to highlight that we don't let fly tippers get away with illegal behaviour and we will catch them. ”

Councillor Steffi Sutters, Cabinet member for Community Services and Open Spaces

Hello! 🙌

Text me to report fly tipping and fly tipping offenders

TEXT:

HELLO
FLY TIPPING
#WACT1

TO:

07883
318887

OR SCAN:



FOR MORE INFO: HELP.CITY
ALL MESSAGES ARE ANONYMOUS.
STANDARD MESSAGING RATES APPLY.
VIEW THE COUNCIL'S PRIVACY NOTICE
AT WANDSWORTH.GOV.UK



HELLO
LAMP POST

Chatbot to help combat fly-tipping

To help combat fly-tipping, residents will be able to report fly tip offenders via a chatbot in fly-tipping hotspots.

In hotspot areas, residents will be invited to scan a QR code or text our chatbot to report people dumping their rubbish illegally. They will also be able to report fly-tipping to the council, when prompted by large blue signs, placed on lamp posts in several locations around the borough.

If successful the trial will be rolled out to further locations across Wandsworth.

Cllr Sutters dumps some rubbish



MEGA SKIP DAY RETURNS

Due to popular demand the council brought back Mega Skip day on Saturday 26 February.

Residents were able to dispose of their rubbish for FREE at nine locations across the borough, encouraging local people to do the right thing with their waste.

Councillor Steffi Sutters, Cabinet member for Community Services & Open Spaces said: "Thank you to everyone who came along. It was great to meet so many people who made use of our skips for free. We'll organise another Mega Skip Day very soon."

Get rid of bulky waste

To book a bulk waste collection from the council, for a modest fee, search for "Wandsworth Council Book Bulky Waste Collection". You can dispose of a wide range of items, from fridges to sofas and more.

You can also visit sites like Freegle or Freecycle to dispose of items for FREE that you can recycle that others may want to use. Search for "Wandsworth Freegle" or "Wandsworth Freecycle".

Landlord Pledge

Landlords and estate agents are also being encouraged to support this work to keep the borough clean and tidy by reminding tenants, in rented properties, how to dispose of their rubbish properly, particularly when they move in and out of the borough.

The aim of the pledge is to make sure that people know what to do with rubbish, and prevent fly-tipping.

Sign Up

Landlords and estates agents who are interested in joining should sign up at wandsworth.gov.uk/mywandsworth

How is the council tackling climate change?

Wandsworth Council has updated its climate change action plan, with new projects and spending in the pipeline this year.

The Wandsworth Environment and Sustainability Strategy (WESS) sets out how the council will become carbon neutral by 2030, and how it will support residents and the borough as a whole to reduce carbon emissions. Work has included:

- A programme to cut emissions from council buildings has started with 15 projects across nine sites including installing insulation, heat pumps, LED lighting and better-managed heating systems.
- Work is being carried out to make the council's housing stock more energy efficient.
- The council's fleet is being switched to electric vehicles.
- Climate risk and decarbonisation are now embedded in the council's pension fund with a significant switch from fossil fuels to sustainable investments.
- Wandsworth has one of the most comprehensive networks of electric charging points of any local authority area.
- A draft Walking and Cycling Strategy has been drawn up including creating more school streets, installing more bike hangars and stands, promoting cargo bikes, improved pedestrian crossings and new cycling infrastructure.
- A draft Air Quality Action Plan is tackling air pollution. Air quality in Putney has drastically improved, with average nitrogen dioxide levels falling from 124 micrograms per cubic metre in 2016 to 69 in 2019 and 55 in 2021.



Energy-efficient lighting



Credit - dusanpetkovic





The council has added solar panels to the roof of Wandsworth Town Hall



- A Biodiversity Strategy, Sustainable Planting Plan and Tree Strategy have been introduced.
- The results of the current food waste trial will be analysed and a new low-carbon waste contract developed.
- The council is supporting people to reduce emissions from their homes, including the Green Homes Grant and a group-buying solar panel scheme.
- Regular publicity, engagement sessions, work with local children, meetings and events including the Together on Climate Change Festival are helping to make local people aware of what they can do to contribute.



Anti-idling campaigns



The Together on Climate Change Festival

Since 2005 carbon emissions from the borough as a whole fell from 1482 kilotonnes to 846 in 2019 – a reduction of 42 per cent.

Since 2005 the amount of carbon dioxide produced per person has fallen from 5.2 tonnes to 2.6 tonnes – a reduction of almost 50 per cent.

Just under half of borough emissions come from the electricity and gas used in homes. Just over a quarter comes from transport and the rest comes from industry, business and the public sector.

CDP, an internationally-recognised body for assessing how cities and companies are working to mitigate and adapt to climate change, raised Wandsworth's mitigation rating for its carbon reduction work from B to A-.

Cabinet member for climate sustainability Cllr Kim Caddy said:

“ This is just a fraction of the work we are carrying out. We have delivered action to tackle climate change at a much faster pace than many local authorities and we are working with local partners and residents to make sure this is a journey that we all take together. Over the coming year we will work even harder and faster to ensure we meet our pledge to become carbon neutral by 2030. ”



See the full Environment and Sustainability Strategy, and get tips on what you can do to reduce your emissions at wandsworth.gov.uk/climate-change



Having fun at Fred Wells Garden

Looking after parks

THE PEOPLE WHO LOOK AFTER THE BOROUGH'S PARKS HAVE BEEN BUSY THIS WINTER CARRYING OUT SOME OF THE VITAL WORK NEEDED TO KEEP PARKS LOOKING THEIR BEST.

Wandsworth has more than 300 hectares of green space, and the 'winter works' programme is carried out over the winter months while plants and trees are dormant and before the bird nesting season begins.

The work aims to protect and maintain biodiversity and includes cutting brambles, hedges, coppicing and tree thinning, as well as planting trees, shrubs and hedges. Bramble is an important habitat and regular cutting improves its quality and stops it encroaching onto other habitats. The work can look drastic at first, but the bramble rapidly grows back.

Coppicing is a traditional method of managing woodland which allows additional light and warmth to hit the ground, and extends the life of trees by ensuring they are continually replaced with new growth.

This summer Wandsworth will again be taking part in No Mow May, and is extending it to 100 housing estates. Grass cutting will be suspended for at least a month to allow wildflowers to flower, providing food for pollinators.

Many of the borough's parks and commons have also recently had, or are getting, upgrades to their playgrounds including Fred Wells Gardens, King George's Park, Windmill Playground on Wandsworth Common and Harroway Gardens.

Wandsworth parks are looked after by the council's contractor Enable. If you have any questions email parks@enable.org.



Hedge planting in association with the Friends of Wandsworth Common

Hundreds of new trees

AROUND 700 TREES HAVE GONE IN THE GROUND THIS WINTER, WITH NEW TREES PLANTED IN PARKS AND ON STREETS AND HOUSING ESTATES.

Species include London plane, cherry, lime, pear, crab apple, rowan, oak, hazel, whitebeam, maple, hornbeam and birch.

The council, working with its contractor Enable, looks after around 62,000 trees in parks, commons and open spaces. Around 15,000 already grow in streets and on housing estates, plus many more growing in private gardens.

In addition to the annual council tree planting programme, other recent planting has included a new avenue in King George's Park of 50 cherry trees donated by the people of Japan, and planting by the Friends of Wandsworth Common to mark their 150th anniversary.

Wandsworth's Tree Policy sets out how it will plant, manage and look after the borough's trees, including ensuring the correct species are planted in the right area – for example some trees thrive in parks, but struggle on streets – and preventing as many trees as possible from being felled.

Read more at [wandsworth.gov.uk/together-on-nature](https://www.wandsworth.gov.uk/together-on-nature)



Representatives from Wandsworth's Ahmadiyya Muslim community help plant cherry trees in King George's Park.

MONDAY

Take the car in for service (2hrs)

TUESDAY

Get insurance renewal sorted
(try not to take all day)



WEDNESDAY

NHS HEALTH CHECK!
20mins!

Aged 40-74? Find out about getting a FREE NHS Health Check – it's quick, simple and one less thing to worry about.

You might be feeling great, but if you're over 40, the risk of heart disease, stroke, kidney disease, diabetes or dementia increases. An NHS Health Check is a quick way to see how you are doing, catch problems early, and keep you at your healthiest for longer.

To find out if you're eligible, visit Wandsworth.gov.uk/healthchecks



Looking for a job? Work Match could help



Wandsworth Work Match is the jobs service set up by Wandsworth Council to match Wandsworth people with local jobs opportunities. It's a one-stop shop for residents and businesses for vacancies and training opportunities.

Since it was set up it has found jobs for over 1800 people, with local firms always on the lookout for more staff as the borough continues to attract inward investment. New vacancies are constantly opening up in construction, hospitality, retail, office, catering and many others.

The service is free and can tell you about current job opportunities, plus help with applying for jobs, CV writing and interview skills.

Businesses are also invited to get in touch with the specialist recruitment team and recruit for free on the Work Match website.

Work Match is hosting a free jobs fair on Thursday 24 March where you can find out about local opportunities and meet potential employers. Find out more at wandsworthworkmatch.org



Rebuilding Battersea Power Station

A hundred apprentices have now been recruited through Work Match to work on the restoration of the Grade II* listed Battersea Power Station. In total 176 apprentices have worked on the power station and the wider development project around it since 2013.

Battersea Power Station and its contractors work in partnership with Work Match to offer job and apprenticeship opportunities to local people. Cllr Rhodri Morgan, Wandsworth Council's spokesman for Economic Development, Skills and Employment, said: "It's wonderful to know that local residents are playing a vital role in securing the future of this incredible London landmark and getting a foot on the career ladder as they work."



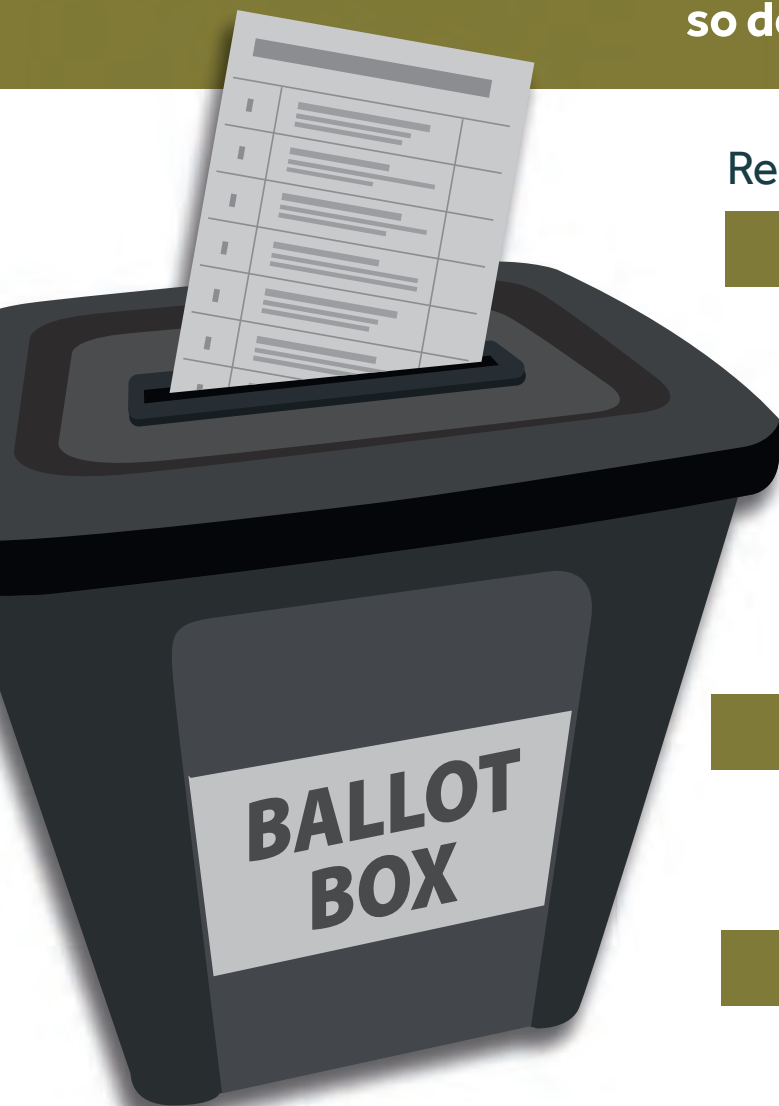
Wandsworth resident Nicola Thorogood is Apprentice Site Manager for Lindner

wandsworthworkmatch.org

Wandsworth Council elections

Get ready to vote for your local
Councillors on **Thursday 5 May 2022**

Local councillors represent you and your local community.
They can make decisions that affect many aspects of our lives,
so don't miss out on having your say!



Register to vote by **Thursday 14 April**

[gov.uk/register-to-vote](https://www.gov.uk/register-to-vote)

Scan this QR code to find
your polling station



Can't get to your polling station?

**Apply for a postal vote by
5pm on Tuesday 19 April**

[wandsworth.gov.uk/postalvote](https://www.wandsworth.gov.uk/postalvote)

**Apply for a proxy vote by
5pm on Tuesday 26 April**

[wandsworth.gov.uk/proxyvote](https://www.wandsworth.gov.uk/proxyvote)

YOUR VOTE MATTERS

DON'T LOSE IT





Are you ready to cast your vote?

On May 5 you will have the opportunity to vote for your local councillors.

Councillors represent the views of local people on Wandsworth Council, which is responsible for a range of local services. The political party with the most councillors sets the overall policy of the council.

The council is split up into 22 area-based wards. These recently changed following a review by the Local Government Boundary Commission. This means you may be voting in a different ward than usual, and may need to use a different polling station.

Some wards will now have two councillors instead of three, with a total of 58 councillors now making up the council instead of 60.

In order to vote, you must be registered. Every household in Wandsworth has received a letter from the council setting out who is registered, by what

means they can vote (in person or by post) and what their ward and polling station is. All registered electors will be sent an official Poll Card during the week of March 28.

The deadline to register to vote is April 14. You can register online at [gov.uk/register-to-vote](https://www.gov.uk/register-to-vote)

On election day polling stations will be open from 7am to 10pm. The busiest times tend to be first thing in the morning before 10am, and between 6pm and 8pm.

You are free to wear a face covering and bring your own pen or pencil, and there will be hand sanitiser in polling stations.

Find out more about voting in Wandsworth at [wandsworth.gov.uk/vote](https://www.wandsworth.gov.uk/vote)

Celebrate Her Majesty



Credit - onebluelight

Wandsworth Council is waiving all fees and charges for anyone organising a street party to celebrate this year's Platinum Jubilee.

And this month it is launching the £25,000 Wandsworth Queen's Jubilee Grant Fund. Schools and community groups can bid for money to run events or create a lasting legacy such as a community garden.

The nation will be marking the Queen's 70 years of service with a four-day bank holiday from June 2-5. The long weekend is intended to be an opportunity for communities to come together to celebrate and reflect with friends and neighbours.

The usual £60 fee will be waived for people organising a jubilee party for their street or neighbourhood during May or June. There will also be a minimum of fuss and red tape with organisers able to apply via a simple online form, which must

be done with a minimum of four to six weeks' notice to give engineers time to organise for the road to be legally closed.

The Mayor of Wandsworth is planting a tree in the Russell Page Garden, Battersea Park to mark the jubilee. Wandsworth is also encouraging people to celebrate in its parks as part of the national Big Lunch campaign. Look out for Big Lunch entertainment pitches in Battersea Park, Wandsworth Common, Tooting Common, Furzedown Recreation Ground and Coronation Gardens. Details can be found at enablec.org/loveparks

Wandsworth residents are some of the most enthusiastic in London when it comes to organising street parties. Fees were also waived for the 2018 royal wedding and a record number of 74 parties were held.

Find out more at wandsworth.gov.uk/streetparties or email streetworks@wandsworth.gov.uk for advice.



Paddock School is Hiring

To Nurture, Inspire and Transform Lives

For more information, scan the QR code



Recruitment Open Day

@ Paddock Upper School, Priory Lane, SW15 5RT

9.30am - 12.00pm

Mon 28th March

Come along to our Ofsted Outstanding School

Meet our brilliant team and see what makes Paddock special



We are recruiting for:

Teaching Assistants

Playground/Meals Supervisors

Teaching and Administration positions available

Expanding SEND School

Great opportunities for term time only positions, full and part-time hours

Get in touch for more details:

recruitment@paddock.wandsworth.sch.uk

www.paddock.wandsworth.sch.uk

020 8878 1521

We're looking forward to hearing from you or just turn up to our Recruitment Open Day.

Paddock Lower and Middle School

St Margaret's Crescent

London

SW15 6HL

Paddock Upper School and Sixth Form

Priory Lane

London

SW15 5RT

Libraries become community beacons

Wandsworth will be getting new 'beacon libraries' this year.

The new Wandsworth Town and Northcote Libraries will be part of a beacon libraries pilot scheme, as well as Putney Library. If the pilot is successful the scheme could be rolled out to other borough libraries.

A beacon library is more closely tailored to the changing needs of the communities they serve, including flexible spaces to meet, work and learn.

Wandsworth Town is currently being fitted out and will include a new conference and meeting facility, exhibition space and a new children's library. It is expected to be completed by the autumn.

Northcote Library will be completed early next year and will include an

extensive children's library, a community; hall, meeting rooms and collaborative workspace. Putney is a very well-used library and its refit will coincide with other work going on in the area (see page six). It will include a dedicated space for local business start-ups and sole traders as well as a new children's library, reception and café area.

Returns from the Chartered Institute of Public Finance and Accountancy show that in 2019/20, the last pre-pandemic figures, Wandsworth libraries lent 1,383,740 books; including 719,416 children's books - the most in London for the third year running.



Nurturing young minds

West Hill Primary School has been awarded the National Nurturing Schools Programme Award for its work improving the social, emotional, mental health and wellbeing of pupils. An assessor from Nurture UK spent a whole day assessing the school, spending time with pupils, parents, staff and the wider community. A plaque was unveiled during the school's Kindness Day in February.



Calling Wandsworth home

An innovative partnership between Wandsworth's state and independent schools has led to a major collaborative art project.

A Place to Call Home was led by local artist Alexander Mourant working with Wandsworth Council's children's services and arts service and more than 1500 students from 51 local schools. Pupils were encouraged to create panels to express their feelings about their local community, which were then put together to create an exhibition showing at Southside Shopping Centre until March 25.

The project is part of the new collaborative partnership between the borough's state and independent schools. Local hubs have been created to encourage communication and connections between schools and the partnership will make creative and academic resources and opportunities open to all the borough's young people.

April opening for soon to be revamped Lido

The popular Lido will be open to everyone from April 1 – a chance to enjoy an open-air swim earlier in the year.

The much-loved outdoor pool is normally open only to members of the South London Swimming Club between October and May. But this year it will be re-opening to all visitors from April 1 to give people more time to enjoy a healthy and bracing outdoor swim - ahead of its £3m council-funded revamp later this year.

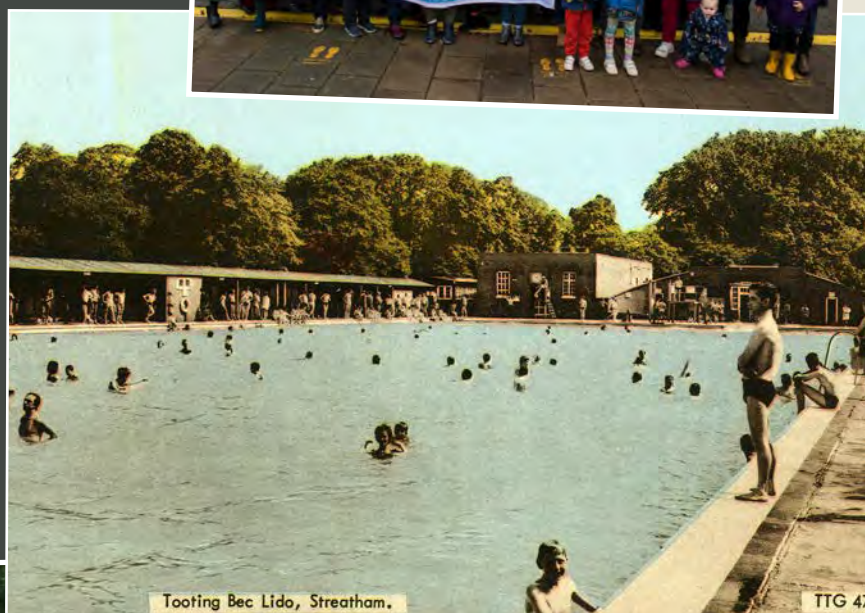
The money will be used to replace both pump houses at the lido with a single building incorporating a modern and more effective UV filtration system, along with new pipework, pool liner and electrical substation.

The lido, which dates back to 1906, is the largest open-air freshwater pool in the UK and welcomes around 100,000 people through its doors every year. It occupies a unique position in the history of British lidos due to its size and the era in which it was constructed.

The history of the Lido was preserved as part of the council's Tooting Common Heritage Project. Find out more at tootingcommon.co.uk/lido

To book your swim at the lido from April 1, visit www.placesleisure.org/centres/tooting-bec-lido. For information about the South London Swimming Club and how to become a member visit www.slsc.org.uk

From top to bottom:
The Lido, then known as the Tooting Bathing Lake, being created in 1906.
South London Swimming club members.
Change to the Lido in the 1970s.
The iconic coloured doors.
The Lido entrance.



what's on?

EVENTS FOR MARCH
TO MAY 2022



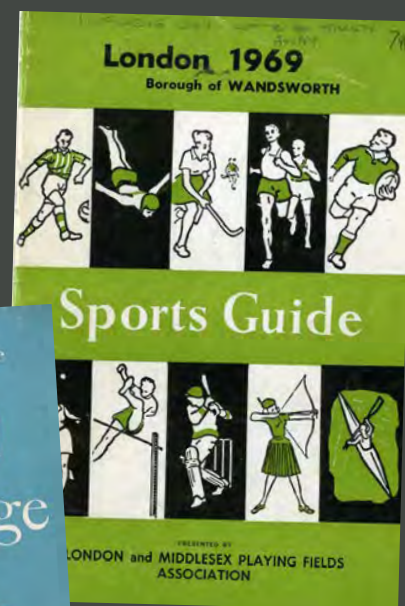
WANDSWORTH HERITAGE FESTIVAL

May 28-June 12

This year's theme is Sporting Wandsworth. Most events this year will be held in person including talks, poetry readings, walks, and exhibitions. There will also be a YouTube playlist of talks and shorts.

The festival is organised by the Wandsworth Heritage Service with the support of many contributors willing to share their enthusiasm, knowledge, and time.

better.org.uk/library/london/wandsworth/wandsworth-heritage-service



Homegrown

April 4-9

A whole week of fun interactive events and performances created by and for young people. Featuring workshops, creative community drop-in sessions, a film screening and party, and culminating in a showcase of incredible talent from local young performers. Battersea Arts Centre bac.org.uk/whats-on



Barn Elms Easter Rowing

April 4-8

Junior rowing courses at Barn Elms Boat House for school year 7 upwards are suitable for both beginner and experienced rowers. Secure a place by completing the booking form online at <http://enablelc.org/bebh>, call 020 3959 0054 or drop into the boathouse office for more information.

Women's Enterprise Day

March 24 9am-4pm

Elm Grove Conference Centre, Roehampton Lane. Tickets are free, or £20 to include breakfast, lunch and afternoon refreshments. Early bird tickets are available at £16 until February 24. Now in its seventh year, the event on March 24 will feature a panel discussion, motivational talks, an interview with one of Britain's most successful entrepreneurs, interactive workshops and a networking lunch.

www.eventbrite.co.uk/e/womens-enterprise-day-and-awards-presentation-tickets-256793705887

Screenprinting workshop

Join local artist Madeline Meckiffe to make your own screenprint and explore the theme of kindness - part of the Spine Festival. Children must be accompanied by an adult.

Free, all materials provided
Friday 18 March 3.45-4.45pm – Ages 5 to 8
Friday 25 March 3.45-4.45pm – Ages 8 to 11
Balham Library Hall

Book at eventbrite.co.uk/o/wandsworth-libraries-34186778945

See other Spine events at applesandsnakes.org/project/spine/



Bags of Taste

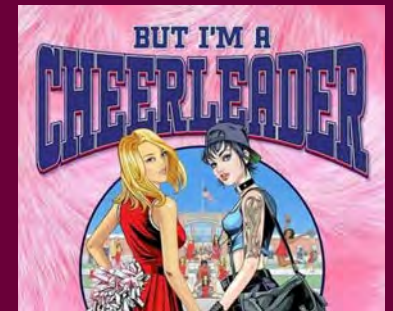
If you are struggling with your food bills, find out how to cook healthy, delicious food on a budget. Eligible participants will get a free bag of ingredients and two-weeks of mentoring via Whatsapp. The course is being partly funded by Wandsworth Council and is free. Phone or Whatsapp 07515 360 246 or email wandsworth@bagssoftaste.org for details.

But I'm a Cheerleader

Until April 16

The musical story of an all-American girl.

Turbine Theatre, Nine Elms
TheTurbineTheatre.com



Nell Gwynn

March 31-April 9

A play by Jessica Swale charting the rise of an unlikely heroine. Putney Arts Theatre

Putneyartstheatre.org.uk/whatson

Tapped

April 5

A comedy exploring connection, fulfilment and hope.

Theatre 503, Battersea
Theatre503.com

BAC Dance Academy

Register now for the new academy, which will run every Wednesday evening from May to July. Young people age 11-19 can learn and perform hip-hop and street dance together. It's free of charge and all abilities are welcome. bac.org.uk/bac-dance-academy



Photo: © George Watson



Barn Elms Sports Centre Easter Camp
April 4-8

Children aged 8-13 can join the popular multi sports holiday programme that runs every day from 10am-2pm. Different sports feature daily. Activities include beach volleyball, archery, football, tennis, tag rugby, dodgeball, laser tag, rounders and netball. Book on 020 3959 0055.



Framed 2.0

FRAMED features art from local artists on lampposts around the borough. For 2022, work by 14 new artists, plus 18 existing artists, will be featured on 32 new banners. Find out more at wandsworthart.com



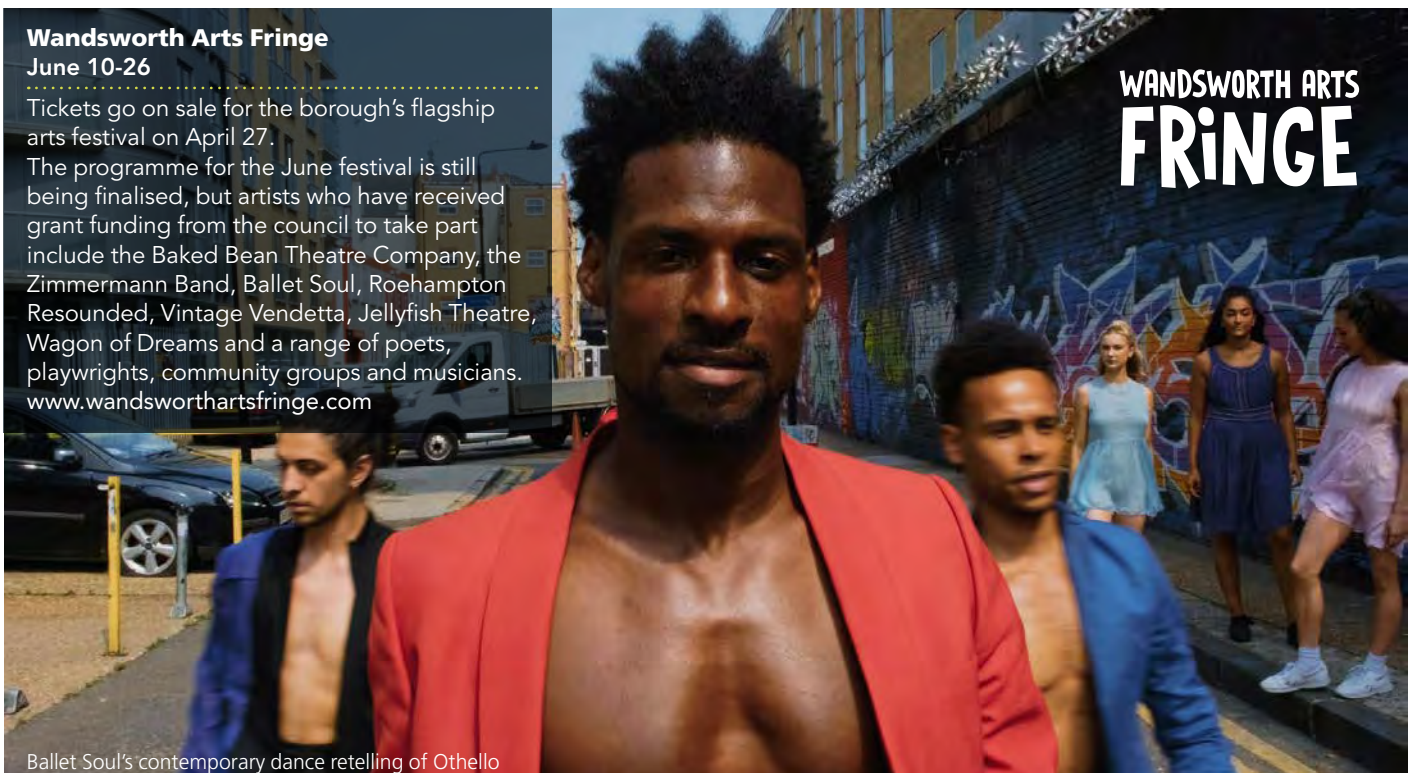
Easter art and design classes

Suitable for all ages and levels of ability. Courses include photography, digital design, printmaking, painting, drawing and pottery. Enrol at PSAD.org.uk

Wandsworth Arts Fringe
June 10-26

Tickets go on sale for the borough's flagship arts festival on April 27.

The programme for the June festival is still being finalised, but artists who have received grant funding from the council to take part include the Baked Bean Theatre Company, the Zimmermann Band, Ballet Soul, Roehampton Resounded, Vintage Vendetta, Jellyfish Theatre, Wagon of Dreams and a range of poets, playwrights, community groups and musicians. www.wandsworthartsfringe.com



Ballet Soul's contemporary dance retelling of Othello



Enable is a not-for-profit

that helps people enjoy happy, healthier and more enriching lives in their communities. We work in partnership with councils, charities and other organisations to deliver high quality outcomes for local people.

Enable's diverse service offering has touch points across all facets of community life, with expert delivery in community development programmes, leisure sites and event production. Our growing Health and Wellbeing team are leaders of social prescribing, outreach and link worker programs which make real and lasting difference to people's lives.

While doing all of this we invest any surplus we earn back into our communities to make a positive difference, offering true value for money for all. This means we can do more each year to support the communities we work with.

If you are passionate about creating communities where people thrive and grow together through better health, wellbeing and opportunities, then joining our Board of Trustees could be right for you.

Join our
Board

As a Board member you will work with the Executive Team in setting our strategy and overseeing service delivery. You will be enthusiastic about helping local communities and be a champion of Enable's work and values.

The Board is seeking an individual with proven management experience in business growth and finance. Particular experience is sought in upscaling through internal and external business expansion.

If you are interested in joining us on Enable's exciting journey as Trustee, please apply today by emailing your CV and a short cover letter to bturner@enablelc.org by 31 March. Informal interviews will take place week commencing Monday 11 April. For more information on Enable and the work that we do with communities – visit www.enablelc.org

Enable is a registered Charity, number 1172345

enable.

For happy, healthier communities.
Not for profit.

Doing it online

Using our website helps keep your council tax bills low

Report a waste problem

wandsworth.gov.uk/waste

Request a housing repair

wandsworth.gov.uk/housingonline

Search planning applications

wandsworth.gov.uk/planningregister

Report a street problem

wandsworth.gov.uk/streets

Apply for a school place

eadmissions.org.uk

Book an MOT

wandsworth.gov.uk/MOT

Report noise and nuisances

wandsworth.gov.uk/noise

Apply or renew a parking permit

wandsworth.gov.uk/parkingpermits

Report graffiti for removal

wandsworth.gov.uk/graffiti

Report an abandoned vehicle

wandsworth.gov.uk/abandonedvehicles

Tell us if you are moving in or out of Wandsworth

wandsworth.gov.uk/MIMO

Enquire about your housing options

wandsworth.gov.uk/housingoptions

Pay it online

It's now easier to pay online at wandsworth.gov.uk/payments

Pay your council tax

wandsworth.gov.uk/paycounciltax

Pay a parking fine

wandsworth.gov.uk/parking/payment

Pay your rent

wandsworth.gov.uk/rents

Pay for a marriage or civil partnership

ceremony

wandsworth.gov.uk/ceremonypayment

Pay your business rates

wandsworth.gov.uk/paybusinessrates

Pay a waste or littering penalty

wandsworth.gov.uk/waste-enforcement

Talk to us online

weekly e-newsletter

wandsworth.gov.uk/enews



facebook.com/wandsworth.council



twitter.com/wandbc



instagram.com/wandsworth_council

My Account

Create an account and you will only have to sign in once to access the main council services.

wandsworth.gov.uk/myaccount

Other contacts at the council

Adult Social Services

(020) 8871 7707

Births, Deaths, Marriages and Voting Hotline

(020) 8871 6120

Early Years and Childcare Hotline including Family Information Service and After School and Holiday Play

Centre bookings

(020) 8871 7899

Environmental Services

including noise, pest control, private housing and licensing
(020) 8871 6127

Finance Hotline including benefits, council tax, rents and business rates

(020) 8871 8081

Housing Hotline including housing management and repairs, service charges, home

ownership, homelessness and housing advice

(020) 8871 6161

Parking and Streets Hotline including concessionary travel, blue badges, MOTs, highways and skip licensing and bay suspensions

(020) 8871 8871

Planning and Building Control hotline including Community Infrastructure Levy (CIL), land searches and street naming and numbering

(020) 8871 7620

Schools and Admissions

(020) 8871 7316

Waste Hotline including rubbish, recycling and litter

(020) 8871 8558



GET VACCINATED
GET BOOSTED
GET PROTECTED

**Book online or visit a
local walk-in clinic**



SCAN ME TO
VISIT THE SITE

GET BOOSTED NOW
nhs.uk/covidvaccination
wandsworth.gov.uk

